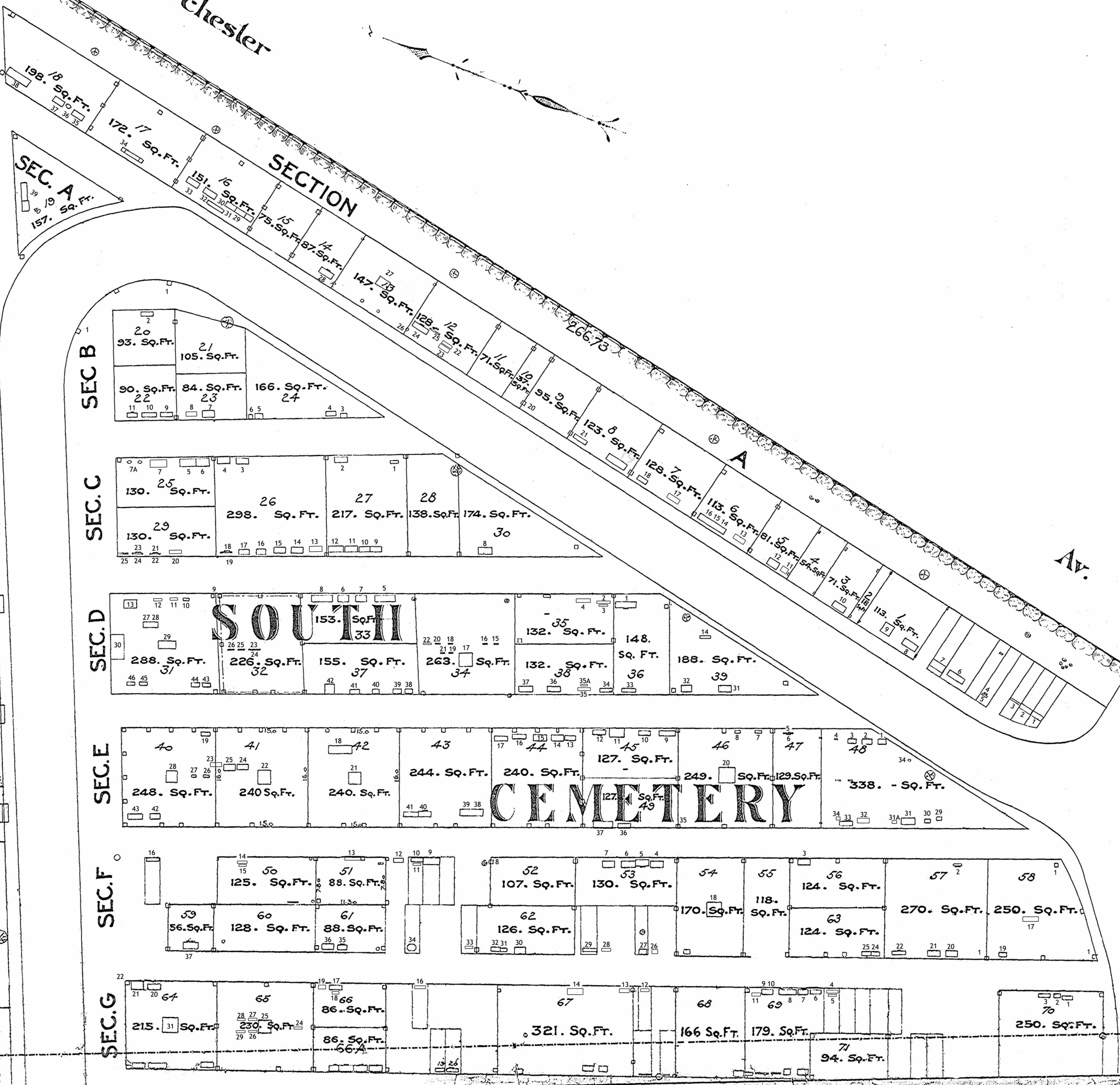


Dorchester

Russell

James

Harriet & Bryer



Note: - Large figures denote Lot numbers  
 Figures within circles denote graves without headstones  
 Small figures denote graves with headstones

CITY OF BOSTON  
**SOUTH CEMETERY**  
 DORCHESTER  
 May 24, 1900  
 William Jackson  
 City Engineer

Scale 8 feet to an inch  
 May 24, 1900

**AREA 95462 Sq. Ft.**

REDRAWN BY KELLY THOMAS, AUGUST 2011

Heirs of Asaph Churchill