

Public Meeting #1



# MASTER PLAN FOR SMITH FIELD PLAYGROUND

ALLSTON, MA



Tuesday June 23<sup>rd</sup>, 2015 @ 6:30-8:00 pm  
Harvard Education Portal, 224 Western Avenue

# Agenda

- 1.** Welcoming Remarks
- 2.** Master Plan Overview and Project Process
- 3.** City Goals and Objectives
- 4.** Project Context
- 5.** Allston Initiatives
- 6.** Existing Conditions
- 7.** Listening Session/Discussion
- 8.** Next Meeting-Fall 2015

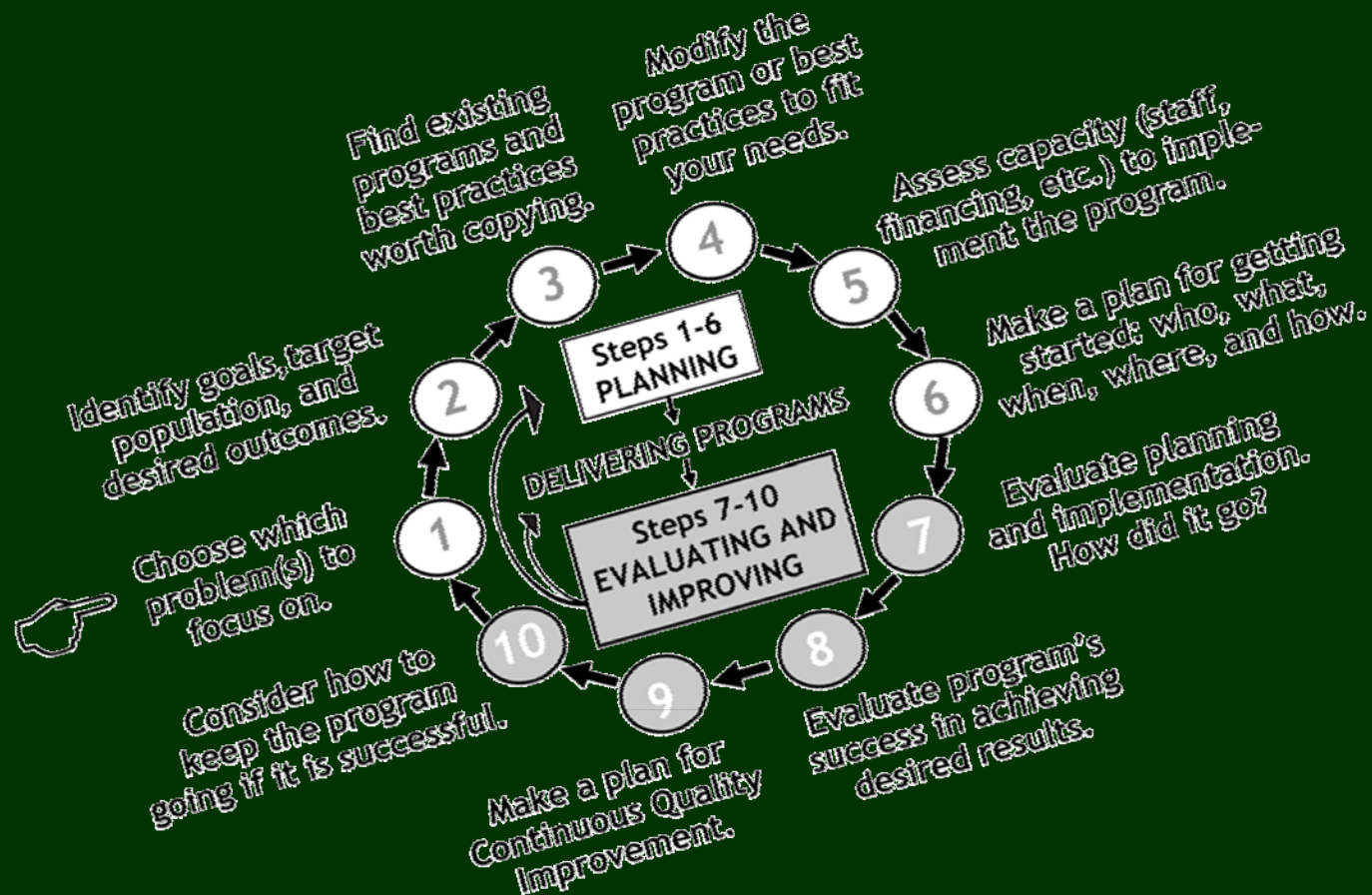
# 1. Welcoming Remarks

## WELCOME TO ALL!

- Proponent is Boston Parks and Recreation Dept.
- This is the first of a series of stakeholder meetings
- Goal is to develop a master plan for Smith Field Playground



# 2. Master Plan Overview & Project Process



## WHAT IS A MASTER PLAN?

- Preserves and protects
- Re-assesses what a park offers / lacks
- Directs change
- Allows a wholistic design approach
- Establishes a vision
- Guides capital dollars
- Sets 10-15 yr. course



## WHY NOW?

- Area undergoing Significant growth and change
- Community has advocated for a master plan
- Opportunity to preserve and enhance



# **3. City Goals & Objectives**



## CITY-WIDE PARK GOALS

- Preserve and protect existing trees
- Expand usable park area
- Improve universal access
- Enhance park visibility
- Improve park access
- Preserve and enhance existing active recreation spaces
- Serve park users of all ages

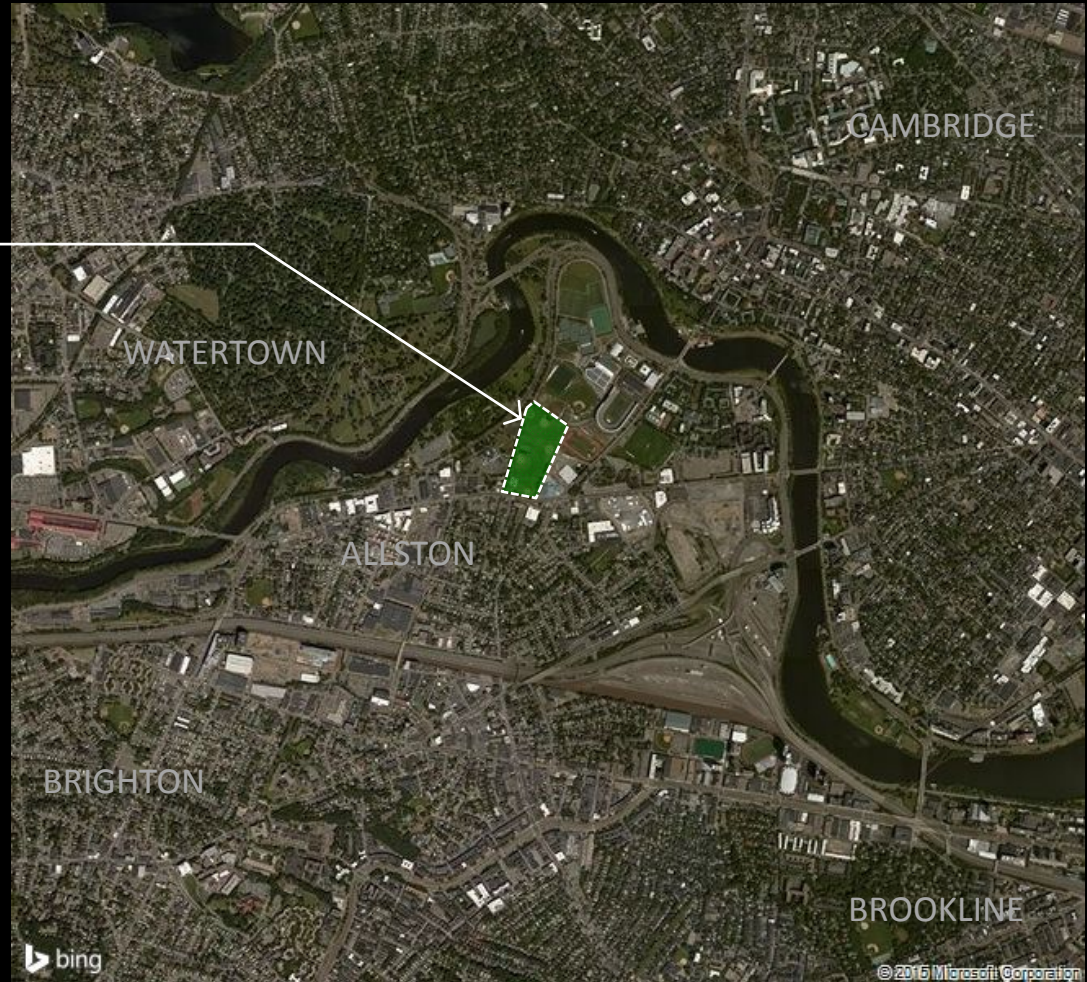


# 4. Project Context

## PROJECT LOCUS

### Smith Field

- William E. Smith Playground
- Established in 1890's
- 14-acre park
- Currently includes softball, baseball, basketball, roller hockey, and playground





## PROJECT LOCUS

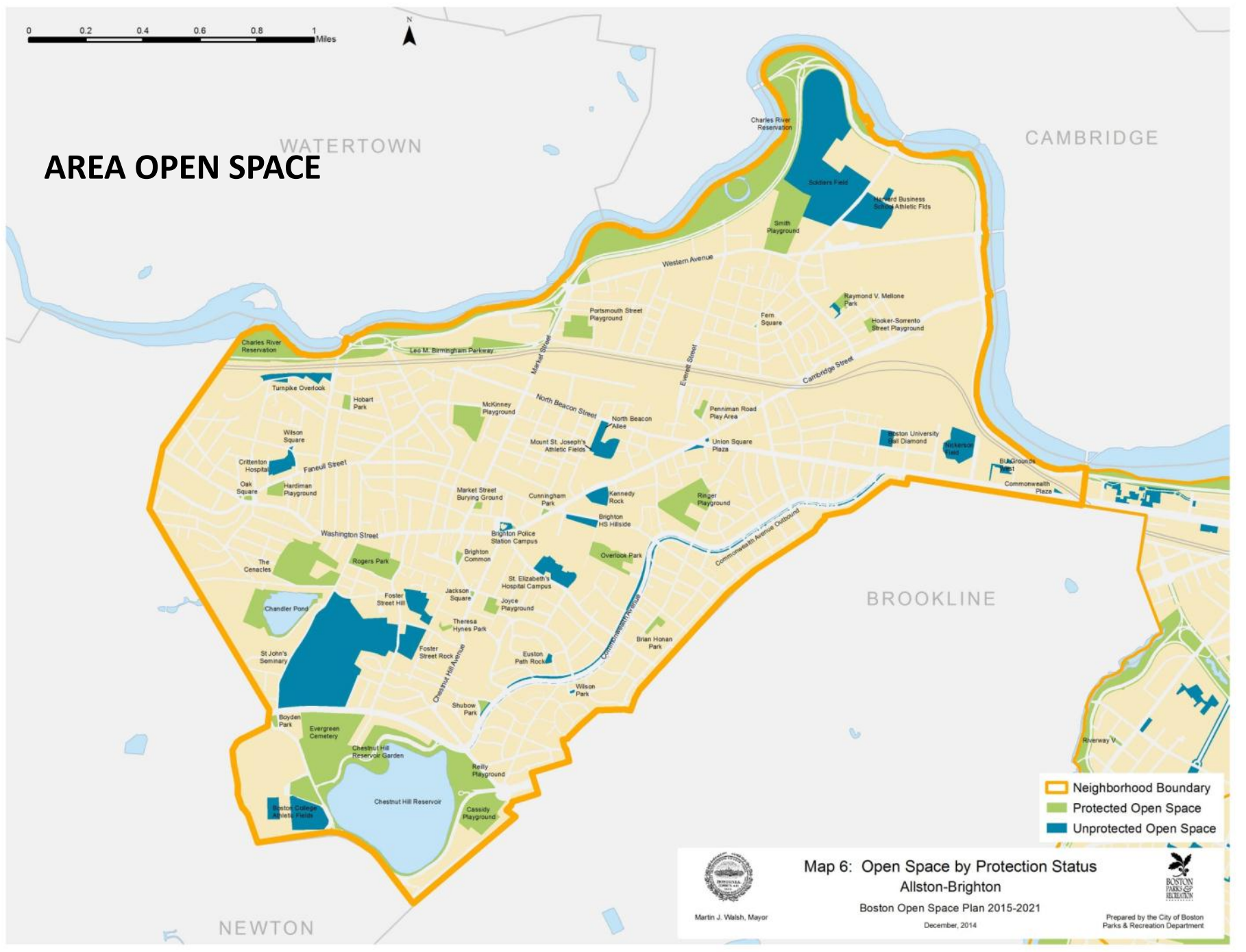
Smith Field

- Located in the NW quadrant of North Allston
- Entry off Western Ave. and Soldiers Field Rd.





# AREA OPEN SPACE



- ▬ Neighborhood Boundary
- ▬ Protected Open Space
- ▬ Unprotected Open Space



Martin J. Walsh, Mayor

## Map 6: Open Space by Protection Status Allston-Brighton

Boston Open Space Plan 2015-2021

December, 2014



Prepared by the City of Boston  
Parks & Recreation Department



# CITY PARKLAND

Charles River Reservation

Smith Field

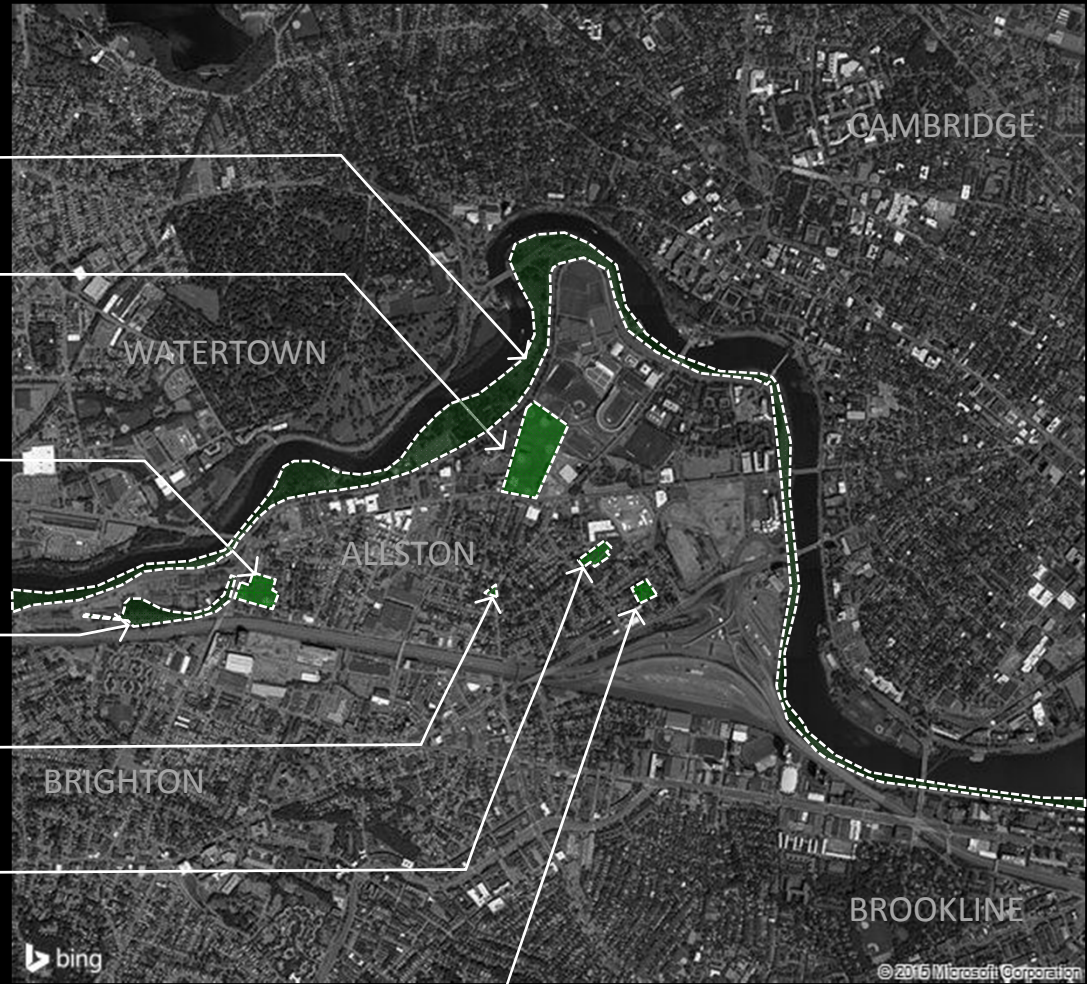
Portsmouth Street  
Playground

Leo M. Birmingham Pkwy

Fern Square

Ray V. Mellone Park

Hooker-Sorrento  
Playground



## HARVARD PROPERTY

- Harvard University's Allston Campus
- Institutional Master Plan (IMP) area
- 155 acres

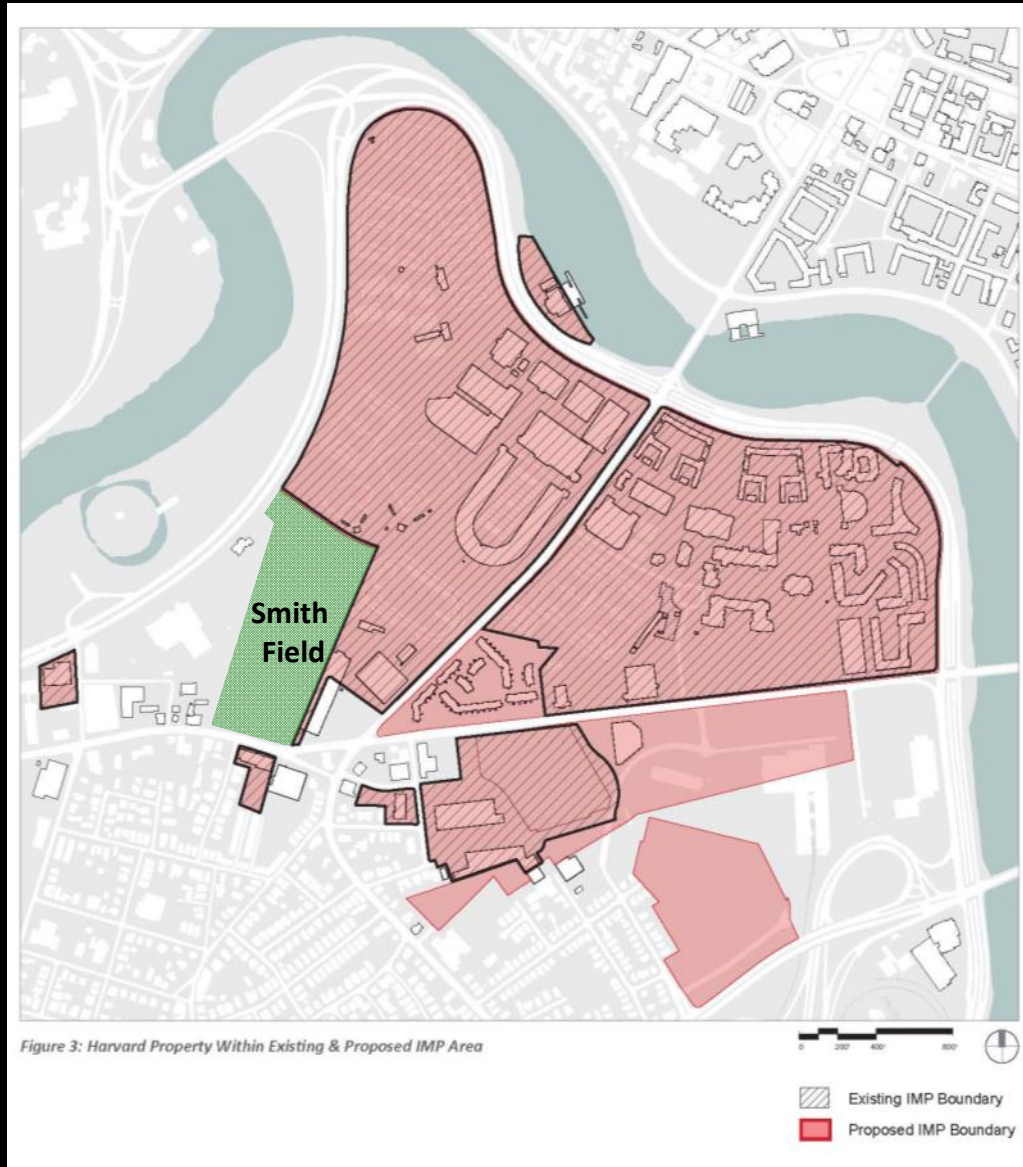


Image from Harvard University's Institutional Master Plan, Revised October 2013

# 5. Allston Initiatives



## BARRY'S CORNER

- Planned Improvements:
  - Retail & Residential
  - Institutional
  - Public realm



## NEW PARK FRONTAGE

- Component of Barry's Corner development
- Includes both pedestrian & bike accommodations
- New frontage along Smith Field
- Connection to new green space

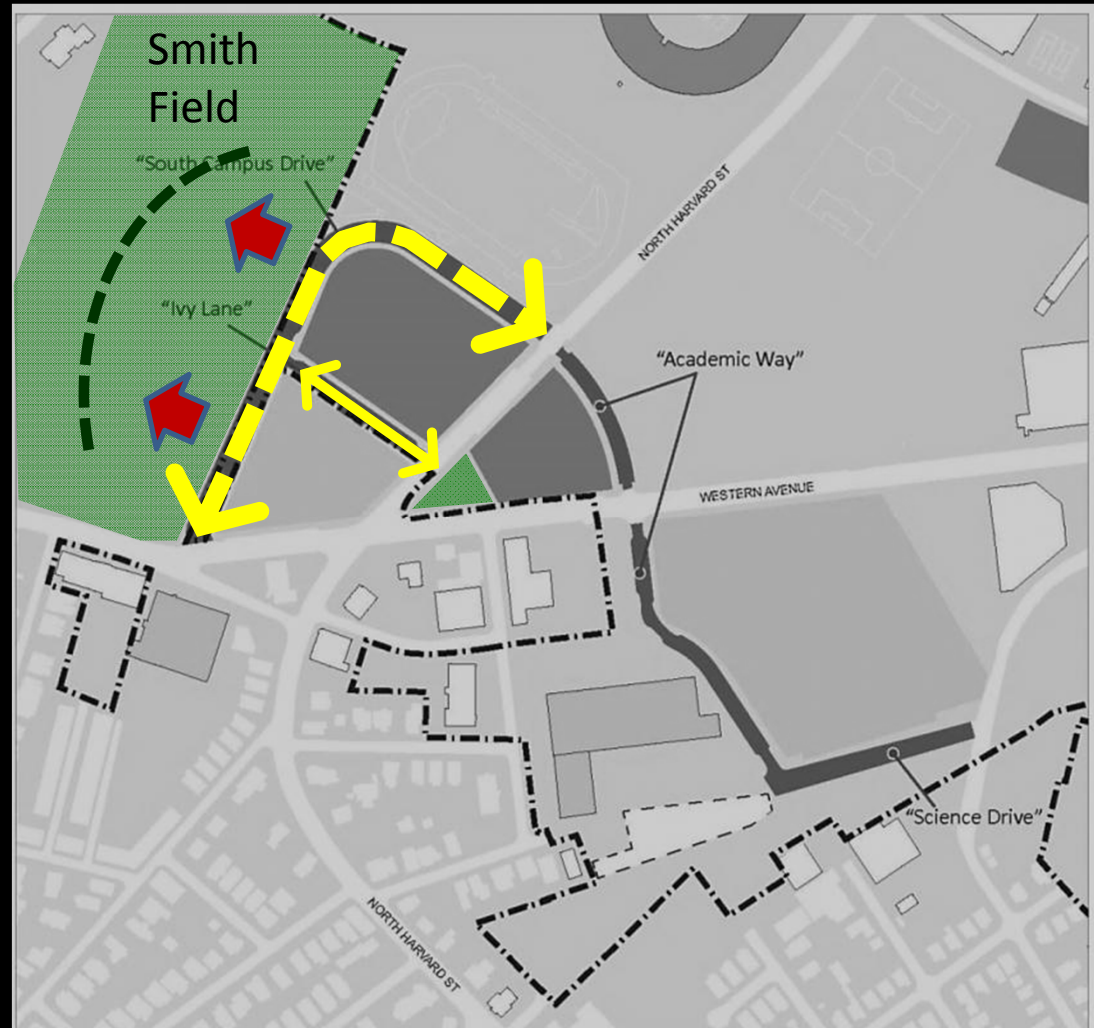


Image from Harvard University's Institutional Master Plan, Revised October 2013

## LONGFELLOW WALK

- Bike and pedestrian path along parks north side
- Link North Harvard Street to Soldiers Field Road
- Improve river access

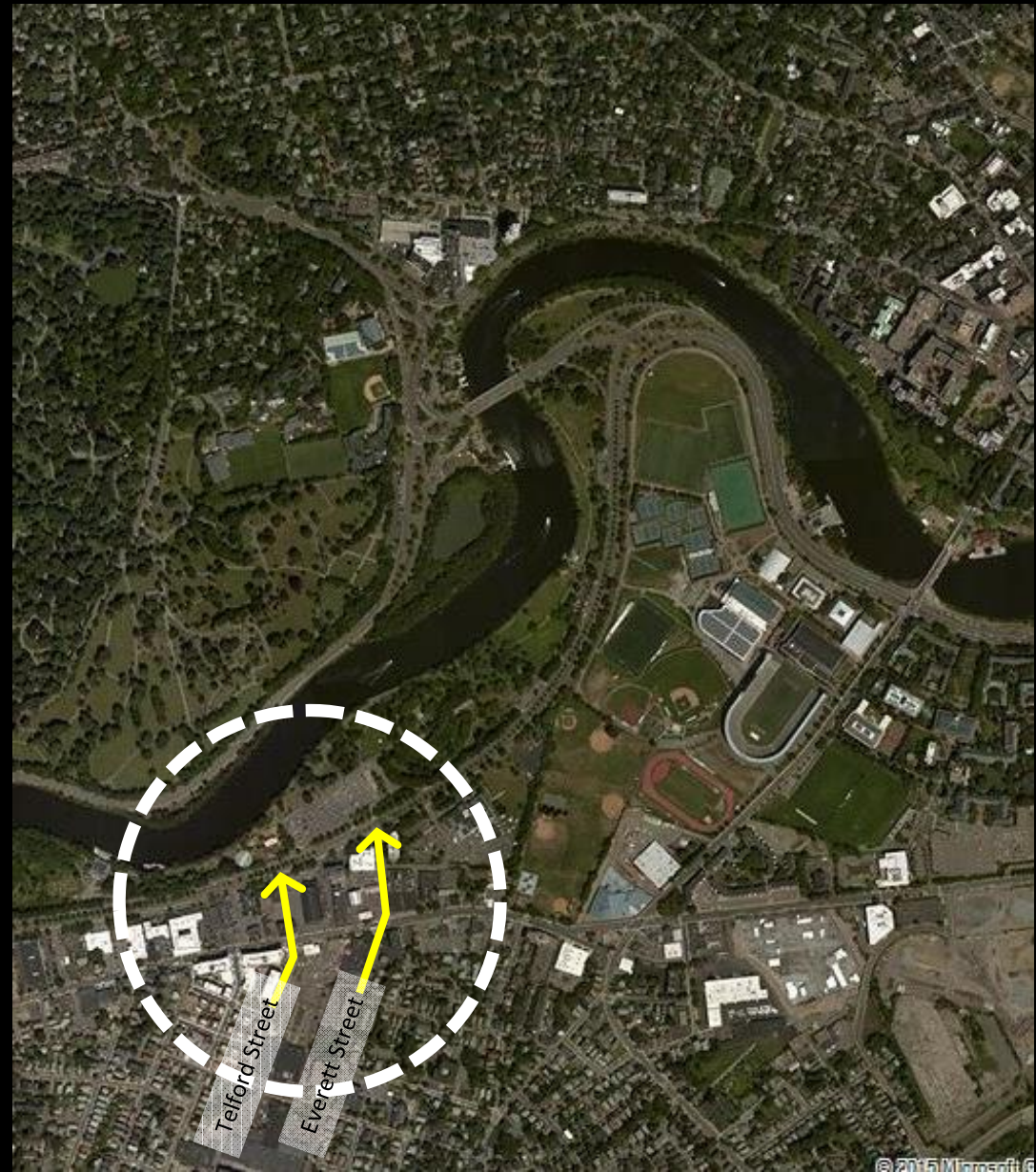


Image from Harvard University's Institutional Master Plan, Revised October 2013



## OTHER INITIATIVES

- Everett Street improvements
- Soldiers Field Road crossing study



# 6. Existing Conditions

## PARK OFFERINGS

Baseball field

Multi-use fields

Roller hockey court

(4) Softball fields

(2) Basketball courts

Playground





## FORMAL ENTRANCES

- (3) pedestrian entrances
- (1) maintenance





## FRONTAGE & VISIBILITY

- Limited frontage
- High stone wall
- New exposure





## VEGETATION

- Perimeter trees
- Limited spatial definition
- Trees in decline



## ACCESS & CIRCULATION

- Limited path network
- No internal circulation
- Limited accessibility





## Ballfields

- Softball and baseball
- Multi-use fields
- Varied conditions



## PLAYGROUND

- Age appropriate
- Older equipment





## BASKETBALL COURT

- Good condition
- Renovated in 2011 by *"Boston's Got Wings"*



## ROLLER HOCKEY COURT

- Needs improvement
- Well used by local clubs for roller hockey and bike polo



# **7. Listening Session / Discussion**



## THOUGHTS, IDEAS....

- How do you use the park?
- What's the best feature?
- How can we make it better?





# **8. Next Meeting – Fall 2015**