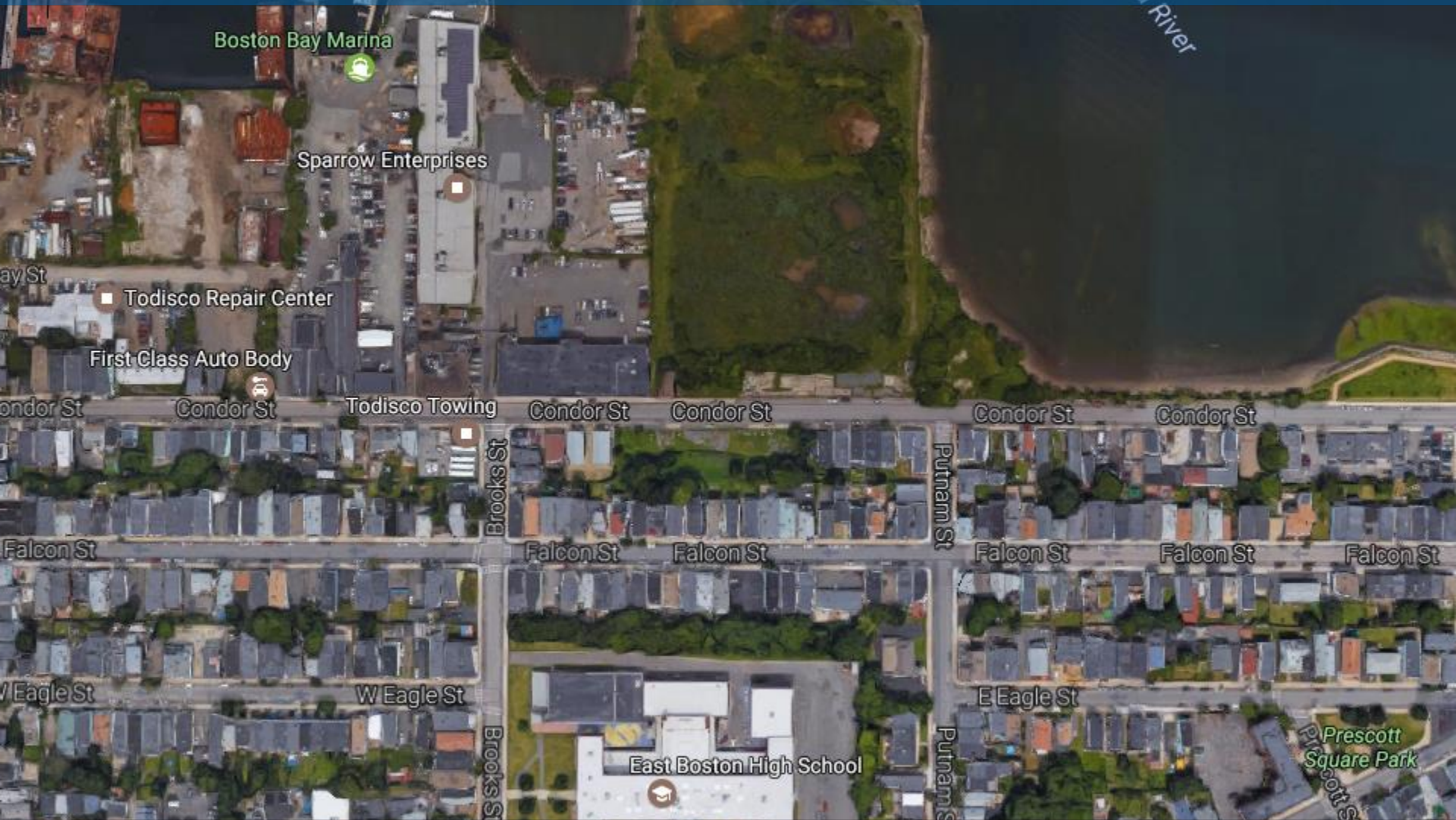


Condor Street Parcels

Community Presentation - 2/6/17



CITY OF BOSTON
MAYOR MARTIN J. WALSH



DEPARTMENT OF
NEIGHBORHOOD
DEVELOPMENT

Agenda:

- Welcome/Introductions
- Meeting Goals
- RFP Process Review
- Site Overview
- Discussion on Potential Site Use

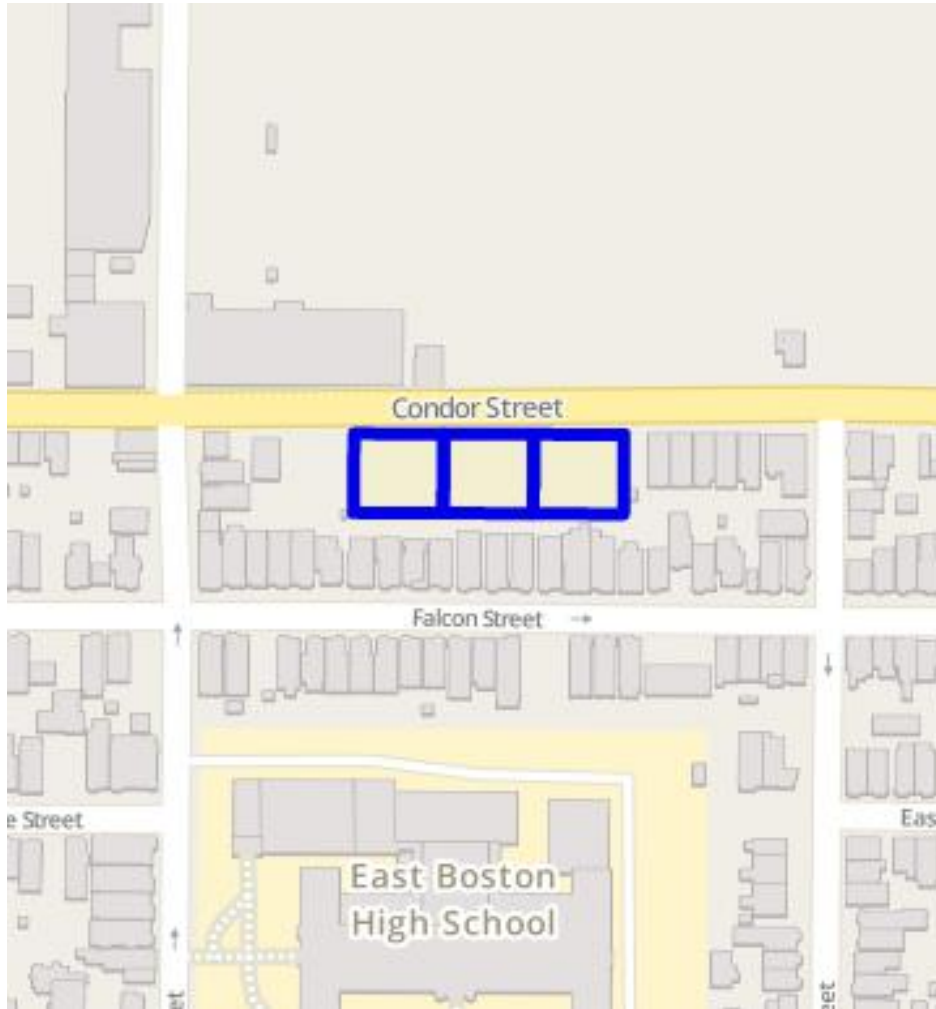


RFP Process

- Initial community meeting
- DND crafts RFP
- RFP released to solicit proposals
- Proposals are reviewed
- Meeting to introduce respondents to community
- Developer selection



Condor Street



- 3 Parcels along Condor Street
- 26,250 square foot vacant site
 - Parcels are each 8,750
- 2F-2000 Zone

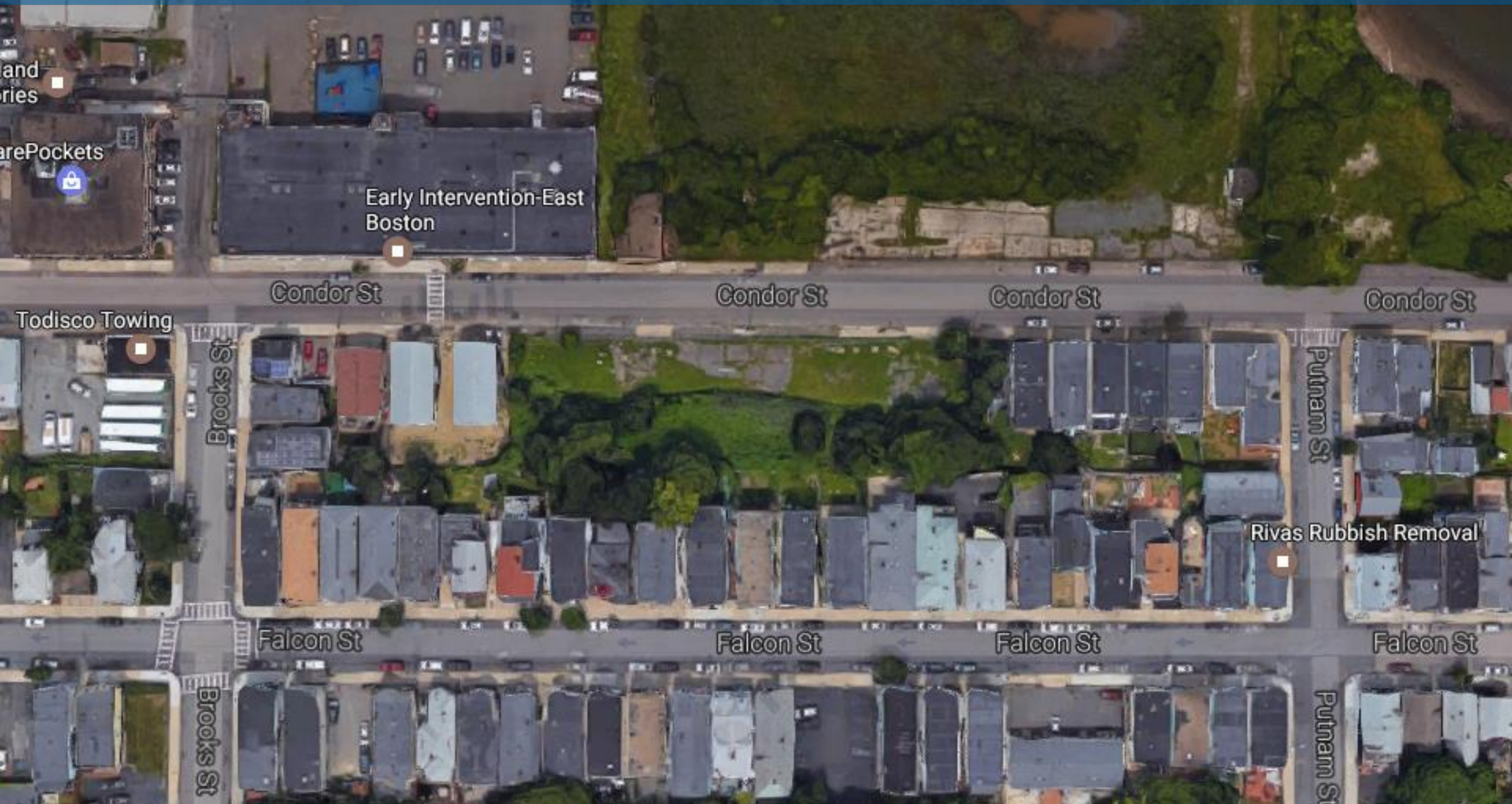


DEPARTMENT OF
NEIGHBORHOOD
DEVELOPMENT

CITY OF BOSTON, MAYOR MARTIN J. WALSH

Site Background

Condor Street



DEPARTMENT OF
NEIGHBORHOOD
DEVELOPMENT

CITY OF BOSTON, MAYOR MARTIN J. WALSH

Aerial Site View

Condor Street



DEPARTMENT OF
NEIGHBORHOOD
DEVELOPMENT

CITY OF BOSTON, MAYOR MARTIN J. WALSH

Existing Site

Condor Street



DEPARTMENT OF
NEIGHBORHOOD
DEVELOPMENT

CITY OF BOSTON, MAYOR MARTIN J. WALSH

Existing Site

Condor Street



DEPARTMENT OF
NEIGHBORHOOD
DEVELOPMENT

CITY OF BOSTON, MAYOR MARTIN J. WALSH

Existing Site

Condor Street



DEPARTMENT OF
NEIGHBORHOOD
DEVELOPMENT

CITY OF BOSTON, MAYOR MARTIN J. WALSH

Existing Site

Condor Street



DEPARTMENT OF
NEIGHBORHOOD
DEVELOPMENT

CITY OF BOSTON, MAYOR MARTIN J. WALSH

Site Context

Condor Street



DEPARTMENT OF
NEIGHBORHOOD
DEVELOPMENT

CITY OF BOSTON, MAYOR MARTIN J. WALSH

Site Context

Condor Street



DEPARTMENT OF
NEIGHBORHOOD
DEVELOPMENT

CITY OF BOSTON, MAYOR MARTIN J. WALSH

Site Context

Condor Street



DEPARTMENT OF
NEIGHBORHOOD
DEVELOPMENT

CITY OF BOSTON, MAYOR MARTIN J. WALSH

Site Context

Access to Public Transportation

- Closest bus stop is 0.2 miles (Meridian Street)
- 0.7 miles to Airport MBTA station
- 0.8 miles to Wood Island MBTA station



Access to Green Space

- 0.3 miles to American Legion Playground
- 0.7 miles to Bremen Street Park
- 1 Mile to East Boston Memorial Park

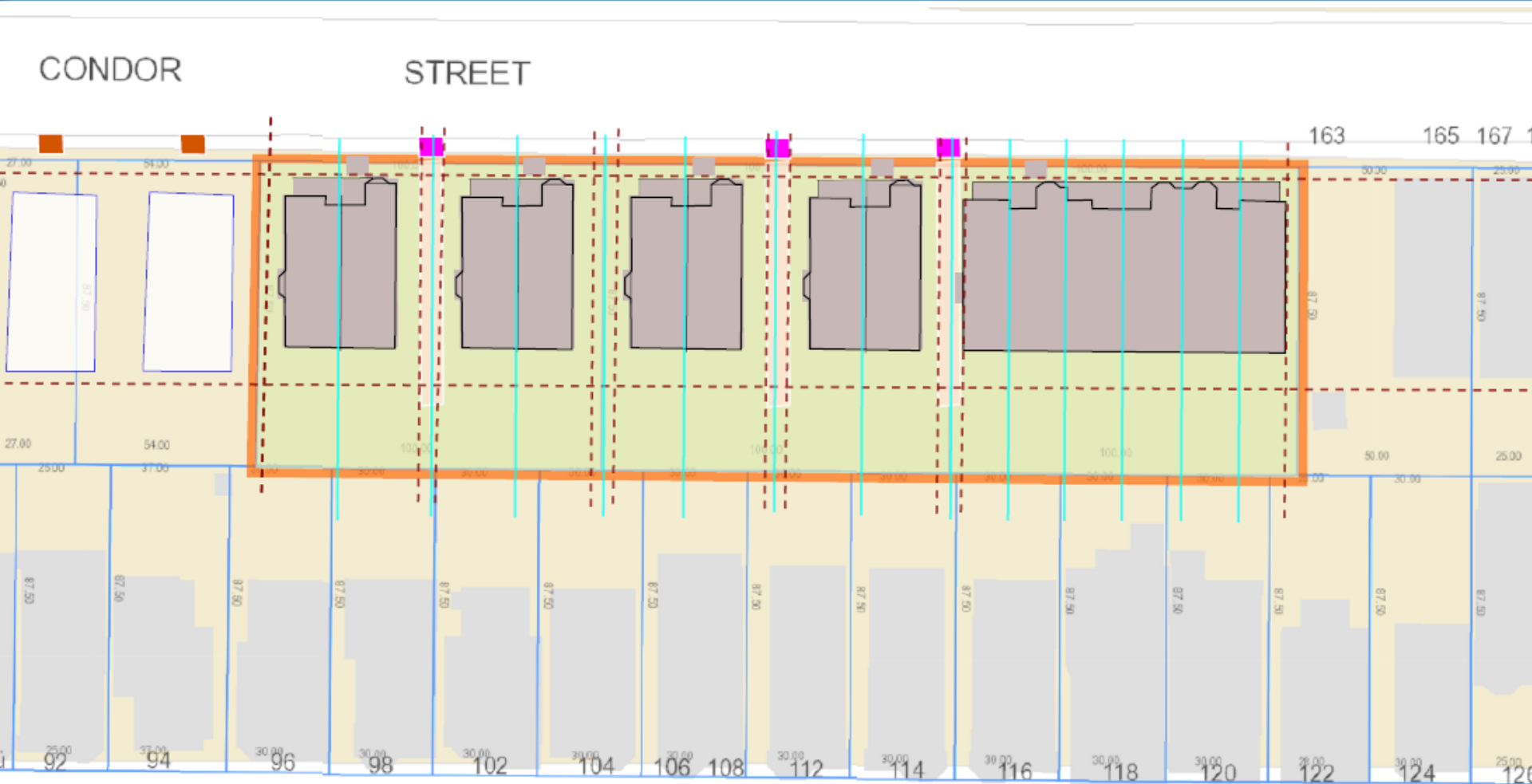


Potential Site Use

- Homeownership units
- Rental units
- Artist housing units
 - Shared artist workspace on the first floor
- Creative approach to parking



Condor Street

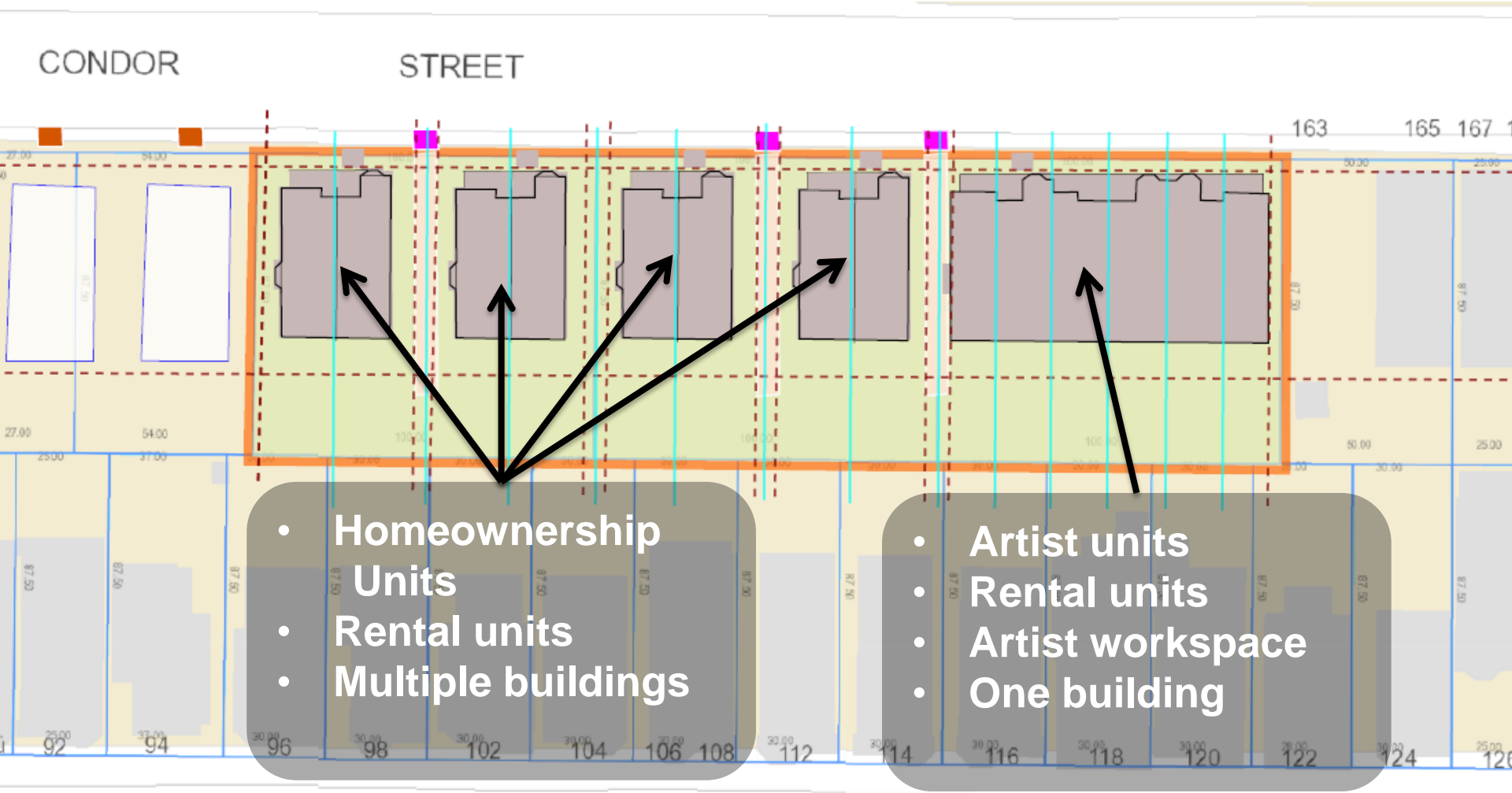


DEPARTMENT OF
NEIGHBORHOOD
DEVELOPMENT

CITY OF BOSTON, MAYOR MARTIN J. WALSH

Potential Site Layout

Condor Street



DEPARTMENT OF
NEIGHBORHOOD
DEVELOPMENT

CITY OF BOSTON, MAYOR MARTIN J. WALSH

Potential Site Layout

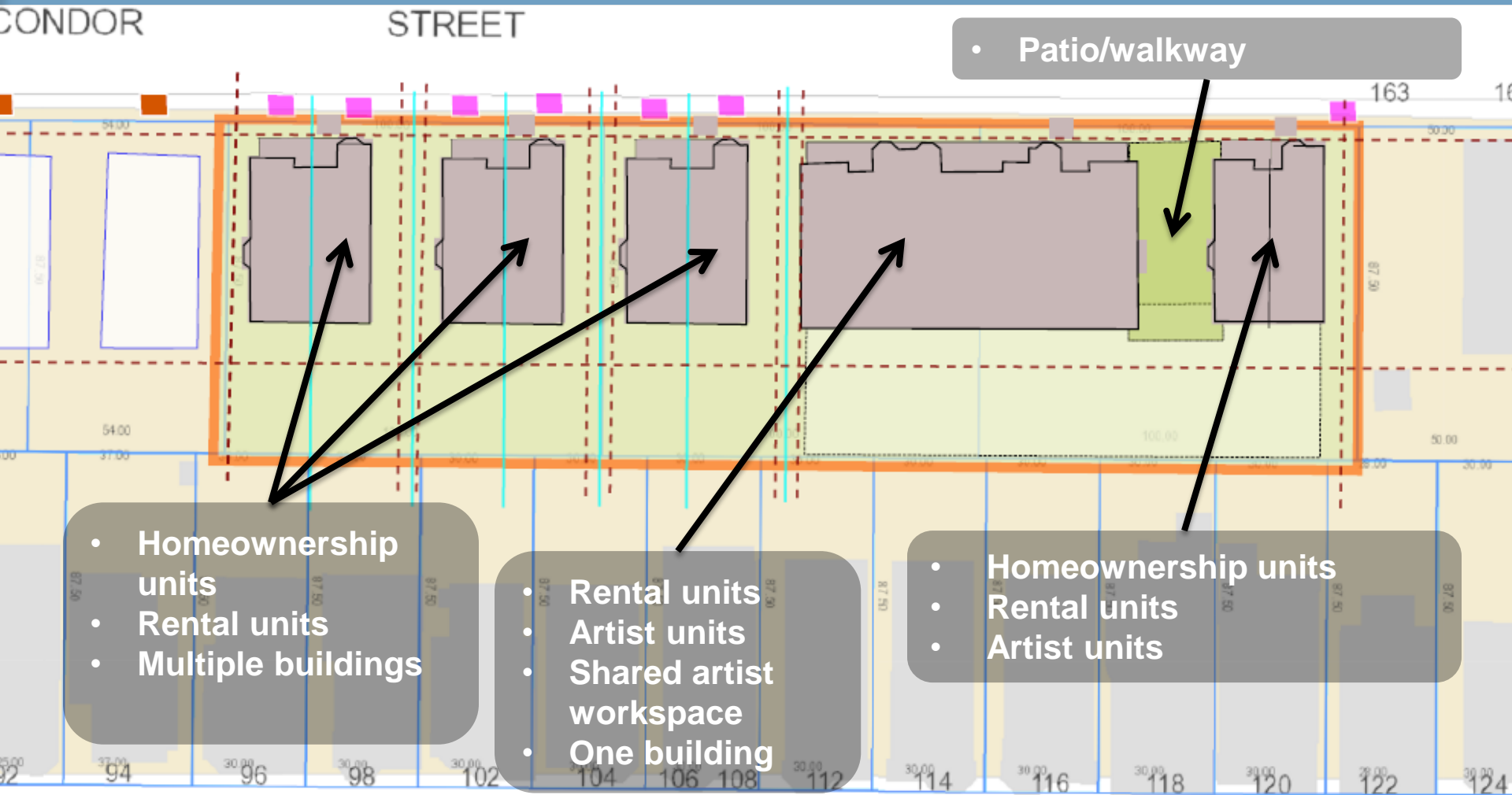
CONDOR STREET



CITY OF BOSTON, MAYOR MARTIN J. WALSH

Potential Site Layout

Condor Street



DEPARTMENT OF
NEIGHBORHOOD
DEVELOPMENT

CITY OF BOSTON, MAYOR MARTIN J. WALSH

Potential Site Layout

Site Use Discussion

- Appropriate housing use for Condor Street Site
 - 26,250 square foot vacant lot
- Homeownership units
- Rental units
- Artist housing units
 - Shared artist workspace
- Creative approach to parking



DND Contacts

Kelly Shay, Sr. Development Officer
(617) 635-0287
kelly.shay@boston.gov

Tom McKay, Development Officer
(617) 635-0182
thomas.mckay@boston.gov

