

John Eliot Sq Urban Wild



Paige Academy proposal

*With help from Northeastern University Urban Landscape
Architecture students, Professor Heather Heimarck, and
COGdesign*

Site Conditions

Community path connection to bus and train stops

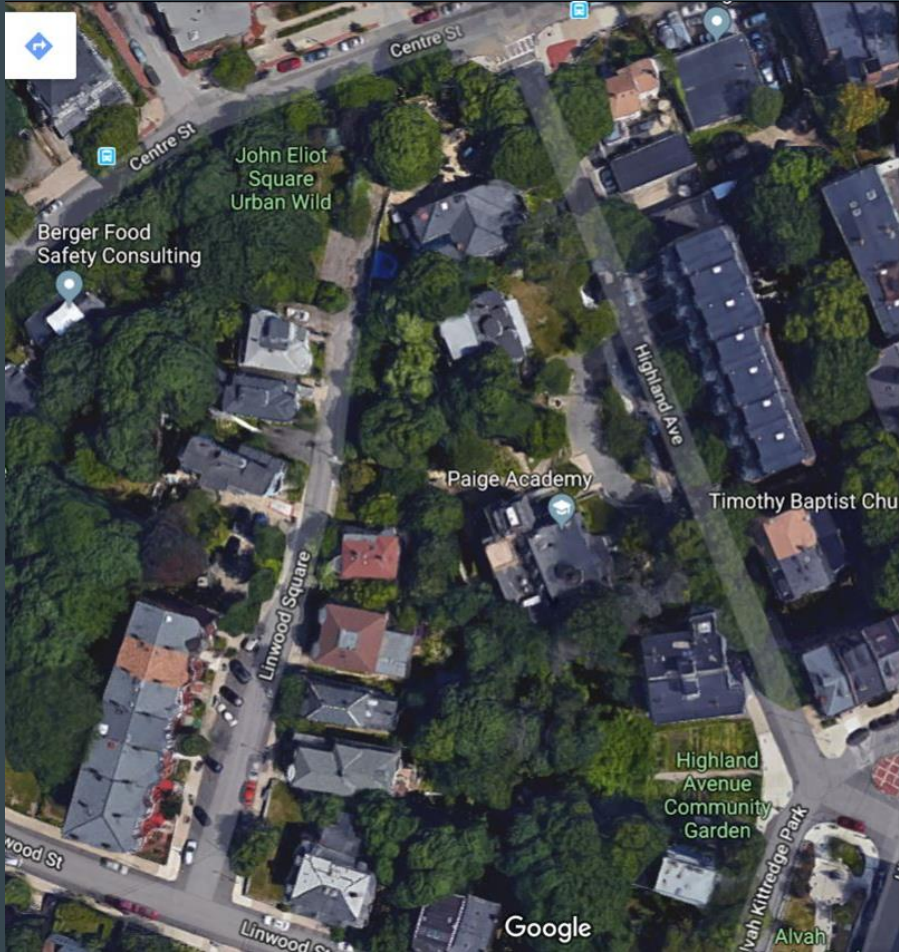
Stewarded by Paige Academy.

Used for educational garden and teepee, compost area, walking path, and parking.

Total square footage: 6,033 square feet

Heavy erosion during rain events.

Existing area is defined by trees, leaf litter, ground cover (ivy), grass, and paved areas.





Right: Community path/desire line
Left: build-up of compost and woody debris







Linwood Square Public/Private road







Design Features + Highlights

More accessible community path that can absorb stormwater runoff

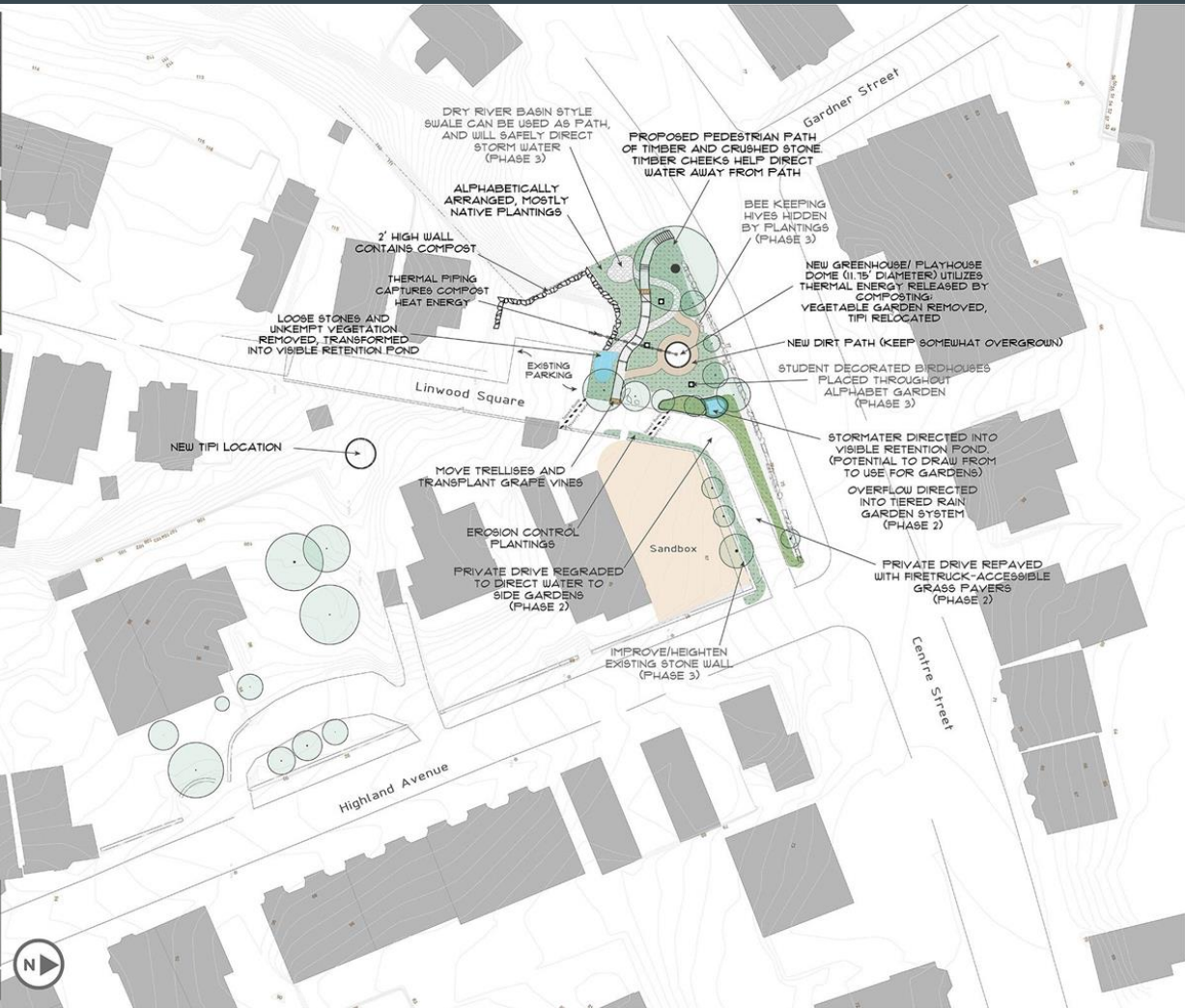
Stabilized compost area

Native plants and flowers for habitat and educational purposes

Educational garden and outdoor space

Permeable parking spaces

Speed bumps to slow traffic and direct rainwater



L.1.1 MASTER PLAN
 SCALE: 1" = 20' - 0"
 March 29, 2018
PAIGE ACADEMY



FOTHERGILLA



ELDERBERRY



BEA BALM



BUTTERFLY BUSH



BLUEBERRY



A IS FOR...



COLUMBINE



HOLLYHOCK



JOE PYE WEED



QUINCE



CARDINAL FLOWER



DAY LILY



IRIS



KOREAN ANGELICA



REDTWIG DOGWOOD



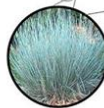
SALVIA



FORSYTHIA



GIANT HYSSOP



LITTLE BLUE STEM



OAK-LEAF HYDRANGEA



GAY FEATHER



MOUNTAIN MINT



MILKWEED



LILAC



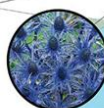
PEPPERBUSH



PIG SQUEAK



NEW YORK IRON WEED



SEAHOLLY



THYME



TOAD LILY



UMBRELLA PLANT



VIRGINIA SWEETSPIRE



WINTERBERRY



WITCH HAZEL (DWARF)



???

X



YARROW



ZEBRA GRASS (DWARF)



ZINIA (ANNUAL)



GRAPE VINE

Architecture
 PAIGE ACADEMY
 COGdesign

L1.2 PLANTING PLAN
 SCALE: 1/4" = 1' - 0"
 March 29, 2018
 PAIGE ACADEMY









John Eliot Sq Urban Wild

Thank you for
Supporting Us!

