

Woodcliff/Letterfine Community Meeting

February 23, 2023



OVERVIEW

- **Introductions**
- **About the Grassroots Program**
- **Site Details**
- **Discussion: Comments and Q+A**
- **Next Steps**

INTRODUCTIONS



- **MOH/GrowBoston staff**
- **Elected officials or their representatives**



Edgewater Food Forest, Mattapan

About the Grassroots Program

MAYOR'S OFFICE OF HOUSING

MAYOR'S OFFICE OF HOUSING



GROWBOSTON

Office of Urban Agriculture



The Food Project - East Cottage Farm

- **GrowBoston's goal is to increase food production and support local food producers in Boston, including gardeners, farmers, beekeepers, and more.**
 - *Support for innovative food production strategies*
 - *Technical assistance to farms and gardens*
 - *Educational resources*
 - *And more!*
- **Part of the Mayor's Office of Housing (MOH)**

GRASSROOTS PROGRAM

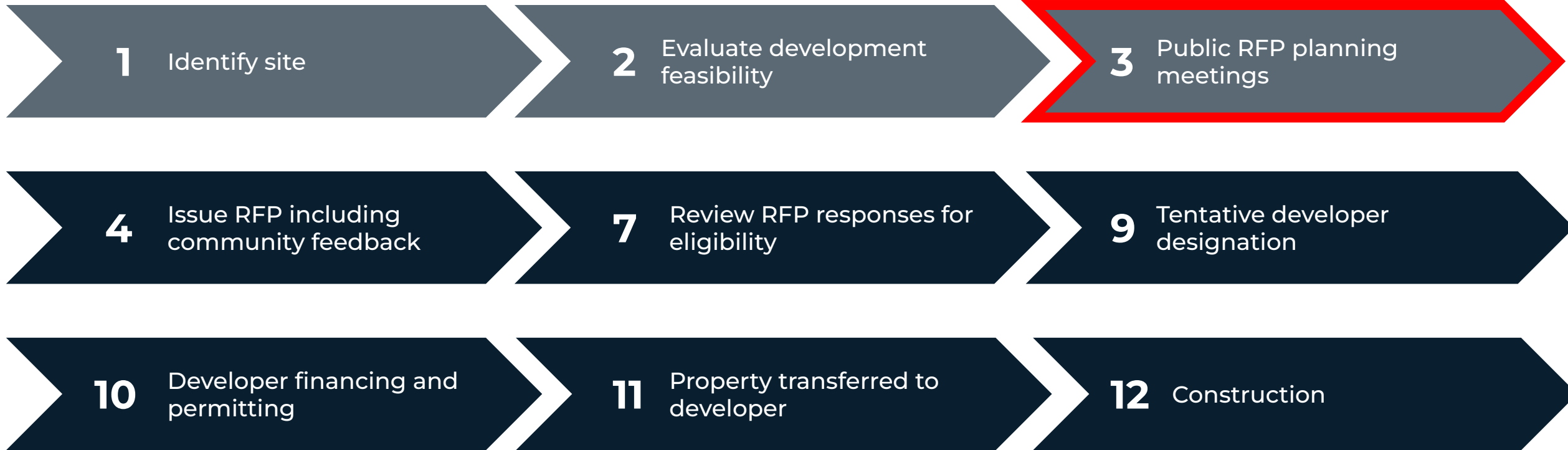
Program of GrowBoston



Savin Hill Wildlife Garden

- **Provides City-owned land, grant funds, and technical assistance to neighborhood groups and non-profits for:**
 - *Community gardens*
 - *Urban farms*
 - *Other open space uses*

MOH LAND DISPOSITION PROCESS



MOH PROCUREMENT PROCESS

Under Chapter 30B



- [M.G.L. c. 30B \(Chapter 30B\)](#) establishes an advertised proposal process that COB must follow in acquiring and disposing real estate property by purchase, sale or rental with a value greater than \$35,000.
- **Under Chapter 30B** we are required to conduct an **open and fair competitive process** that places all proposers on common footing, solicit information that will allow **manageable and meaningful comparisons of offers** and base decisions solely on the information solicited (what we've heard from the community).

About the Site

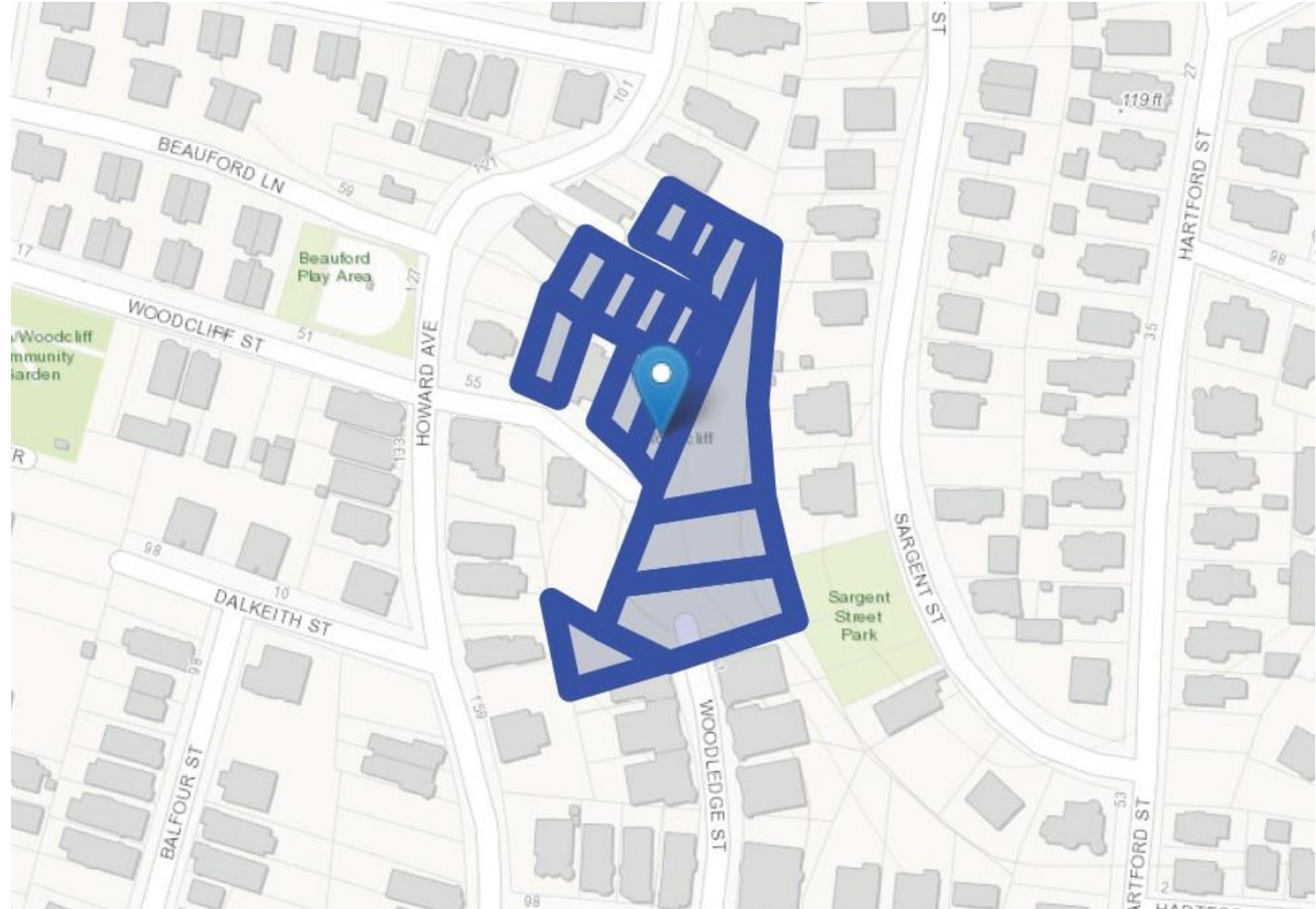
MAYOR'S OFFICE OF HOUSING

MAYOR'S OFFICE OF HOUSING

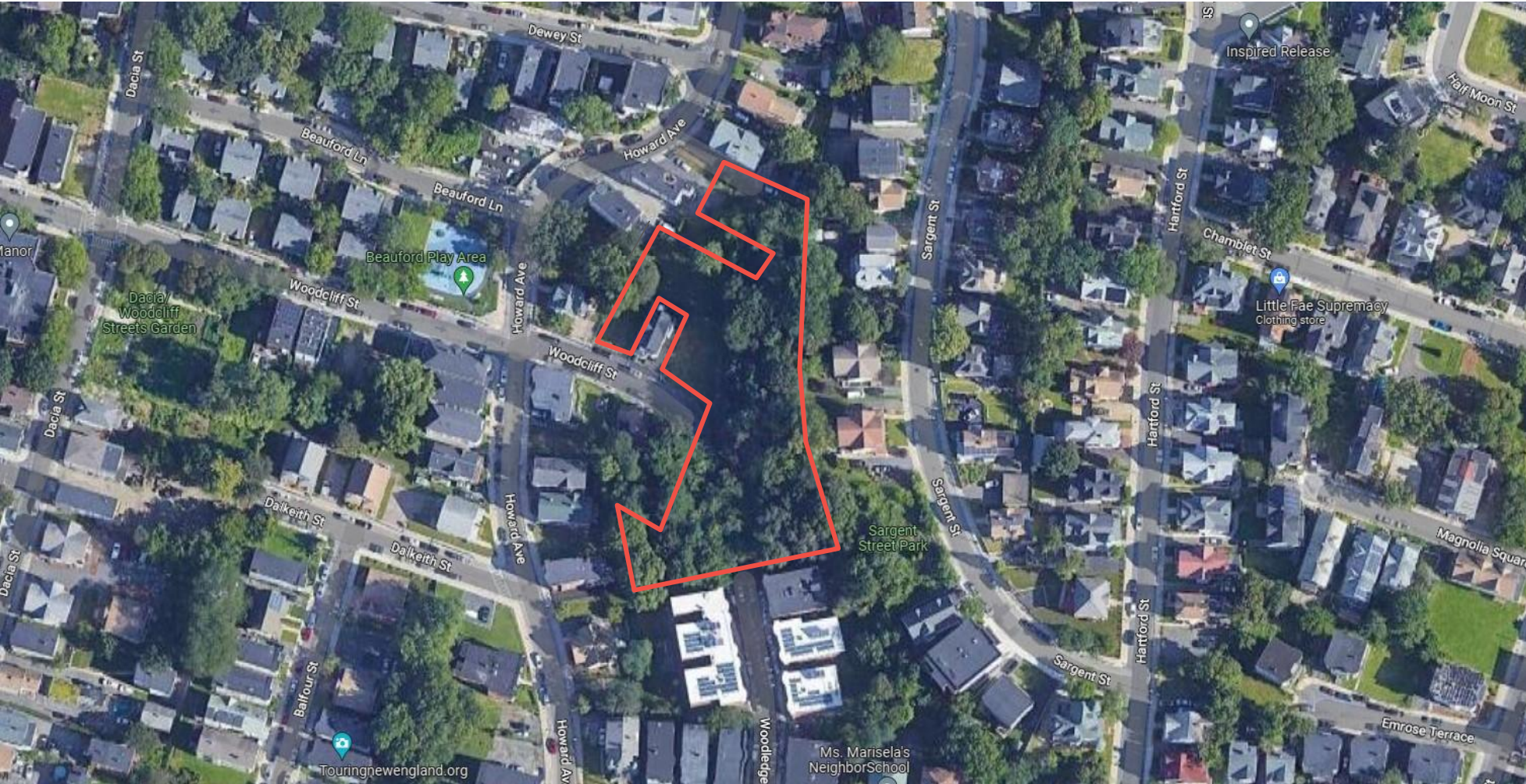


SITE DESCRIPTION AND MAP

- **Location: Roxbury**
- **Total Size: 57,466 sq ft**
- **14 vacant parcels**
 - 1-3 Letterfine Terrace
 - 2-4 Letterfine Terrace
 - 5-7 Letterfine Terrace
 - 6 Letterfine Terrace
 - 10-12 Letterfine Terrace
 - 14-16 Letterfine Terrace
 - 78 Woodcliff Street
 - One (1) unnumbered Letterfine Terrace parcel
 - One (1) unnumbered Woodledge St. parcel
 - Two (2) unnumbered Sargent St. parcels
 - Three (3) unnumbered Woodcliff St. parcels



SATELLITE VIEW



SITE PHOTOS



View towards Howard Avenue



SITE PHOTOS



View from Woodcliff Street towards Letterfine Terrace



SITE PHOTOS



View from 78 Woodcliff Street towards Letterfine Terrace



SITE PHOTOS



View from 78 Woodcliff Street towards Sargent Street



SITE PHOTOS



View from end of Woodcliff Street towards Woodledge Street



Discussion: Comments and Q+A

PROPOSED FUTURE USE

Open Space

- Improved urban forest and community open space
- Open for public use
- Raised beds for community use
- Possible food forest elements - fruit or nut trees and bushes for community use
- Possible small building on flat parcels off of Woodcliff
- Most of site permanently protected as open space by deed restriction
- Possibility that some parcels in use by abutters could be sold to them (at appraised value)

WE WANT TO HEAR FROM YOU!

Open Space

- Do you have any questions or concerns regarding the possible permanent use of this site as **open space for community use** including maintaining **forested areas**, planting **fruit trees**, installing **garden beds**, and a constructing a **small building**?
- Do you want to see this space preserved as public open space into the future?
- Is there anything you would NOT want to see on this site?
- Any other comments, questions or concerns?

Next Steps

MAYOR'S OFFICE OF HOUSING

MAYOR'S OFFICE OF HOUSING



CONTACT INFORMATION

- **Theresa Strachila**
 - Program Manager, GrowBoston
 - theresa.strachila@boston.gov
 - 617-635-0267
- **Project website:**
 - bit.ly/woodcliff-letterfine

