

# Vision Framework

Go Boston 2030 envisions a city in a region where all residents have better and more equitable travel choices, where efficient transportation networks foster economic opportunity, and where the City has taken steps to prepare for climate change.

Whether traveling by transit, on foot, on a bike, or by car, Bostonians will be able to access all parts of the city safely and reliably.

Large multi-lingual walls were created for each theme that emerged from the Question Campaign. Participants could offer their own vision through words or images, build on other people's ideas, and indicate what content resonated with them the most. The walls also included images that were submitted in advance by the public via the website.

## Guiding Principles

### Equity

Boston will proactively address transportation infrastructure gaps in chronically under-served neighborhoods.

### Economic Opportunity

Boston will connect its dynamic workforce with a growing number of well-paying and lasting jobs, particularly those in new-economy sectors.

### Climate Responsiveness

Boston will provide opportunities for more trips to be taken by public transit to reduce greenhouse gas emissions and will prepare the transportation system for severe weather.



## Primary Goals and Targets

### Expanding Access

#### Goal

Make Boston's neighborhoods interconnected for all modes of travel.

#### Aspirational Target

Every home in Boston will be within a 10 minute walk of a rail station or key bus route stop, Hubway station, *and* carshare.

### Improving Safety

#### Goal

Substantially reduce collisions on every street through education, enforcement, and designs that reallocate street space to prioritize moving people safely rather than faster.

#### Aspirational Target

Eliminate traffic fatalities and severe injuries in Boston.

### Ensuring Reliability

#### Goal

Prioritize making travel predictable on Boston's transit and roadway networks.

#### Aspirational Target

Bostonians' average commute to work time will decrease by 10%.

## How We Get to Work Today and Aspire to in 2030

Mode for Bostonian Commutes	Today*	2030 Aspirational
Public Transit	34%	↑ Up by a third
Walk	14%	↑ Up by almost a half
Bike	2%	↑ Increases fourfold
Carpool	6%	↓ Declines marginally
Drive Alone	39%	↓ Down by half
Other/Work from Home	5%	↑ Slight increase in Work from Home

\* 2014 ACS 1-year estimates

† 2010 ACS 5-year estimates, via CTPP

Mode for Commutes into Boston from the MAPC Region†	Today*	2030 Aspirational
Public Transit	40% (10% Commuter Rail)	Up by a third
Walk	2%	Doubles
Bike	1%	Increases fourfold
Carpool	8%	Increase by half
Drive Alone	50%	Down by half
Other/Work from Home	1%	Slight increase in other modes (taxi, motorcycle, etc.)



# Action Plan Highlights

Go Boston 2030 has developed a list of projects and policies that will be implemented as early action projects in the near term and a set of long-term projects and policies that will require further planning processes to be implemented over the next 15 years. The top projects came out of an extensive public process and needs assessment analysis.

## Top Projects

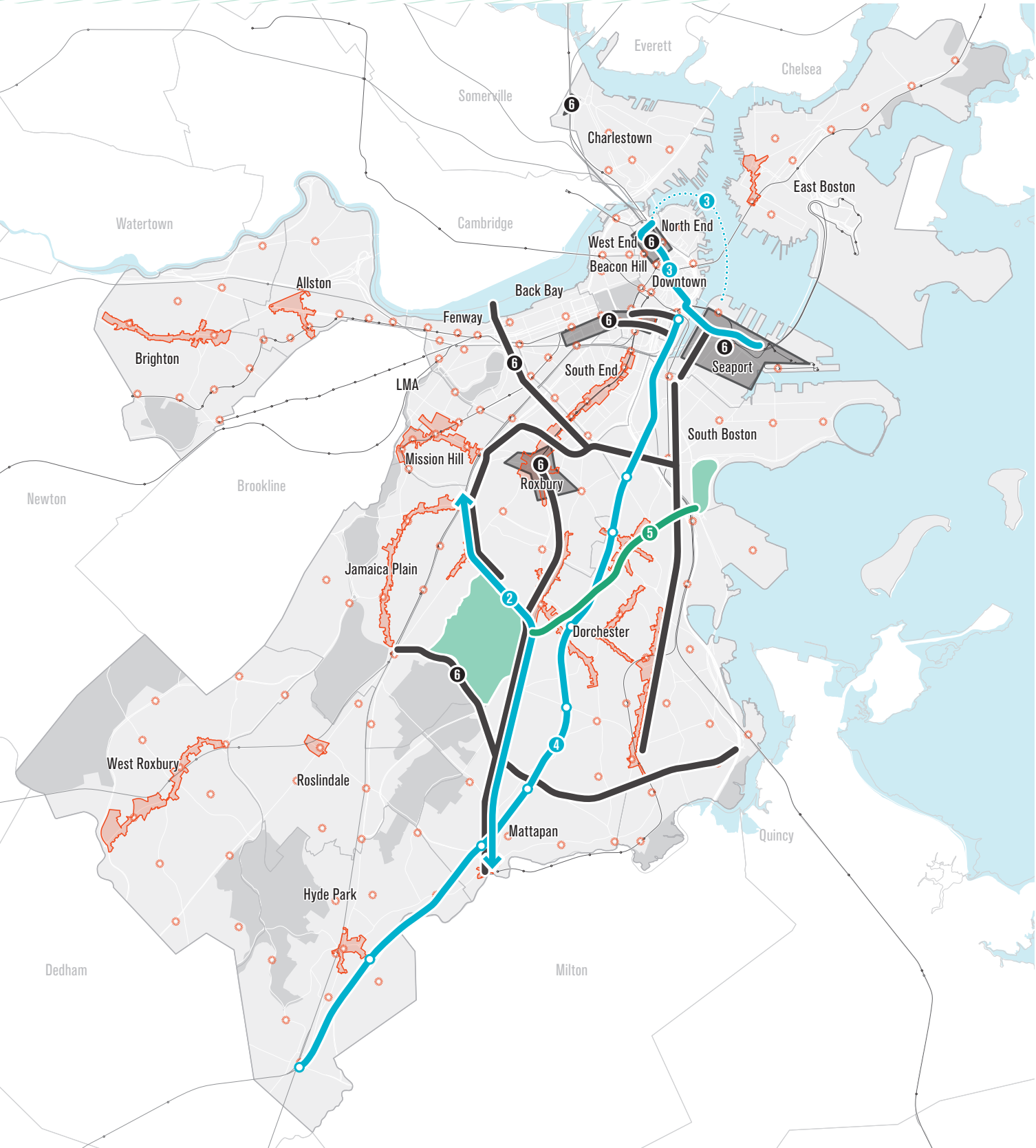
- 1 Walking and Bicycle Friendly Main Street Districts
- 2 Mattapan to LMA Rapid Bus
- 3 North Station to South Boston Waterfront Rapid Bus and Ferry
- 4 Fairmount Indigo Line Service Improvements and Urban Rail
- 5 Columbia Road Greenway
- 6 Smart Signal Corridors and Districts
- 7 Neighborhood Mobility microHUBS

## Top Policies

- State of Good Repair—Particularly Bridges
- Restructure All Bus Routes
- Autonomous Vehicles
- Vision Zero Safety Initiatives (Corridors, Crossings, Slow Streets)

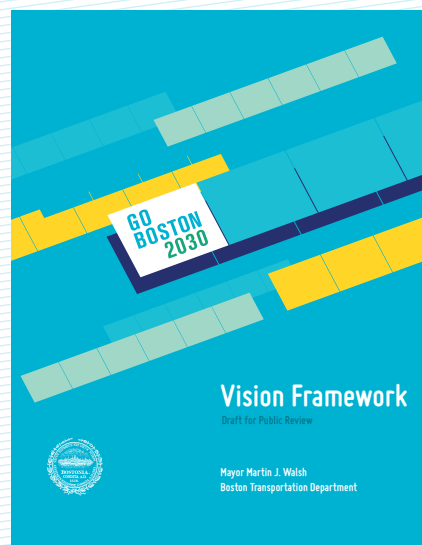
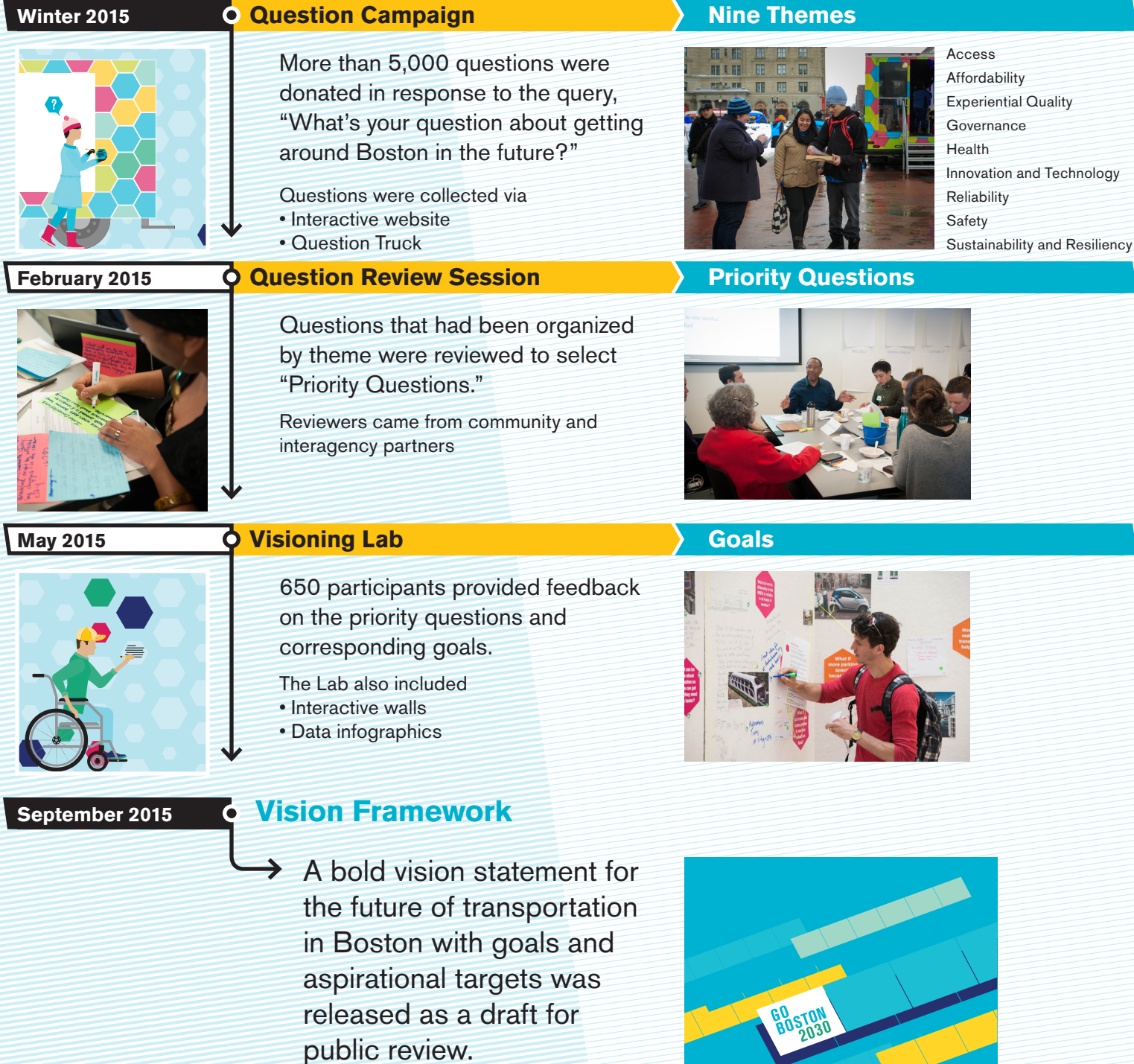


## Key Go Boston 2030 Projects and Policies





# The Process from Vision



# to Action Plan

