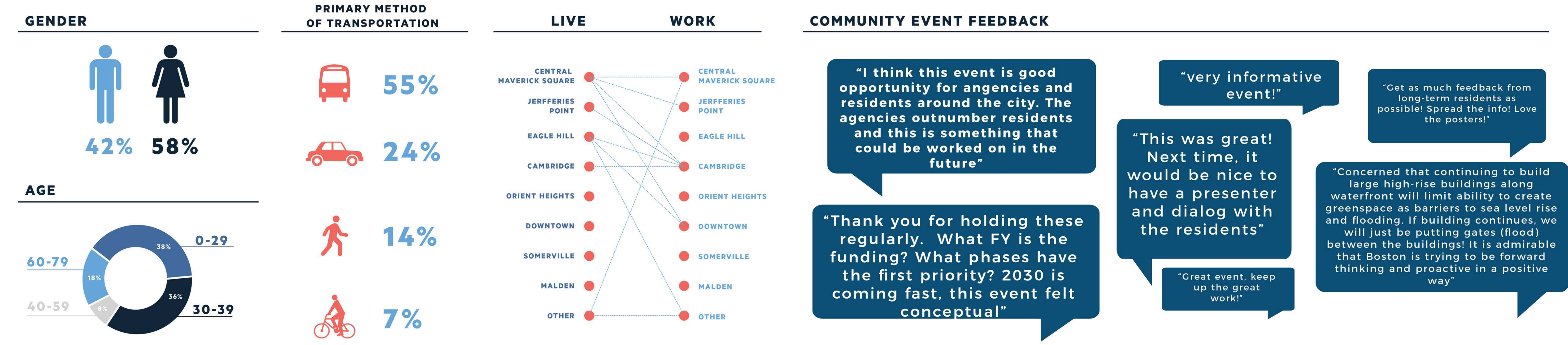


WHAT WE HEARD

EAST BOSTON OPEN HOUSE JULY 13, 2017:

WHO PARTICIPATED?



WHAT ARE YOUR CONCERNS?

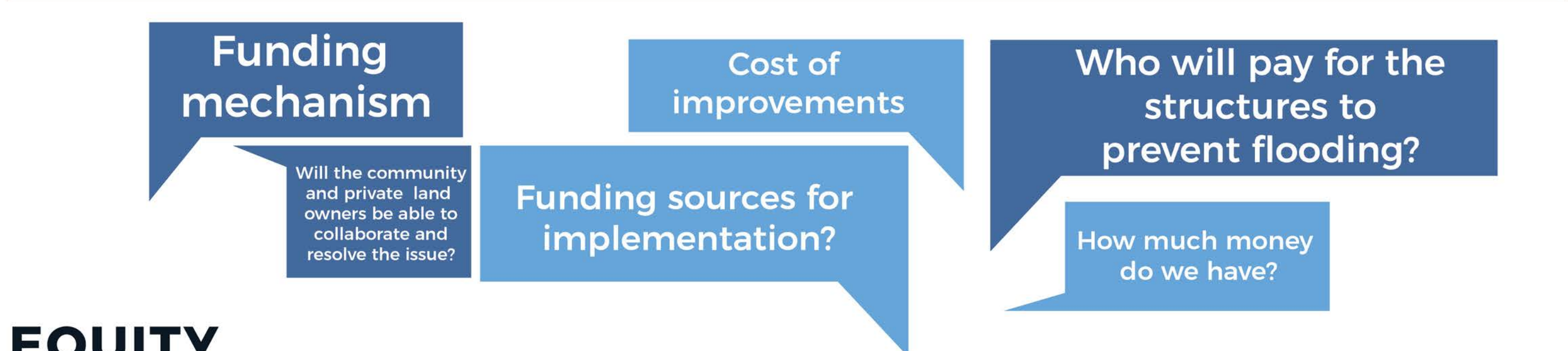
TIMELINE



WATERFRONT ACCESS & OPEN SPACE



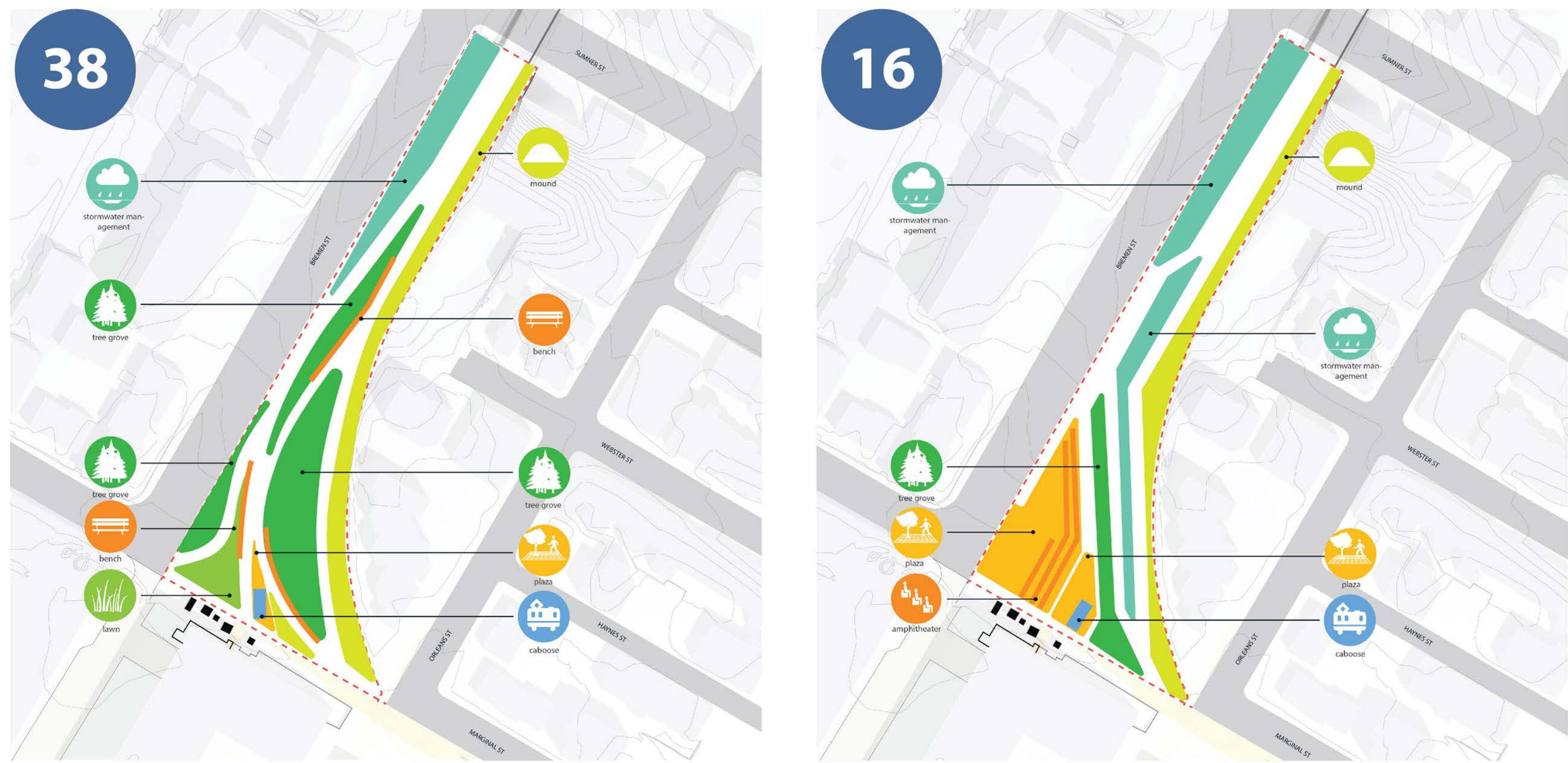
COSTS



EQUITY



WHICH GREENWAY OPTION DO YOU PREFER?

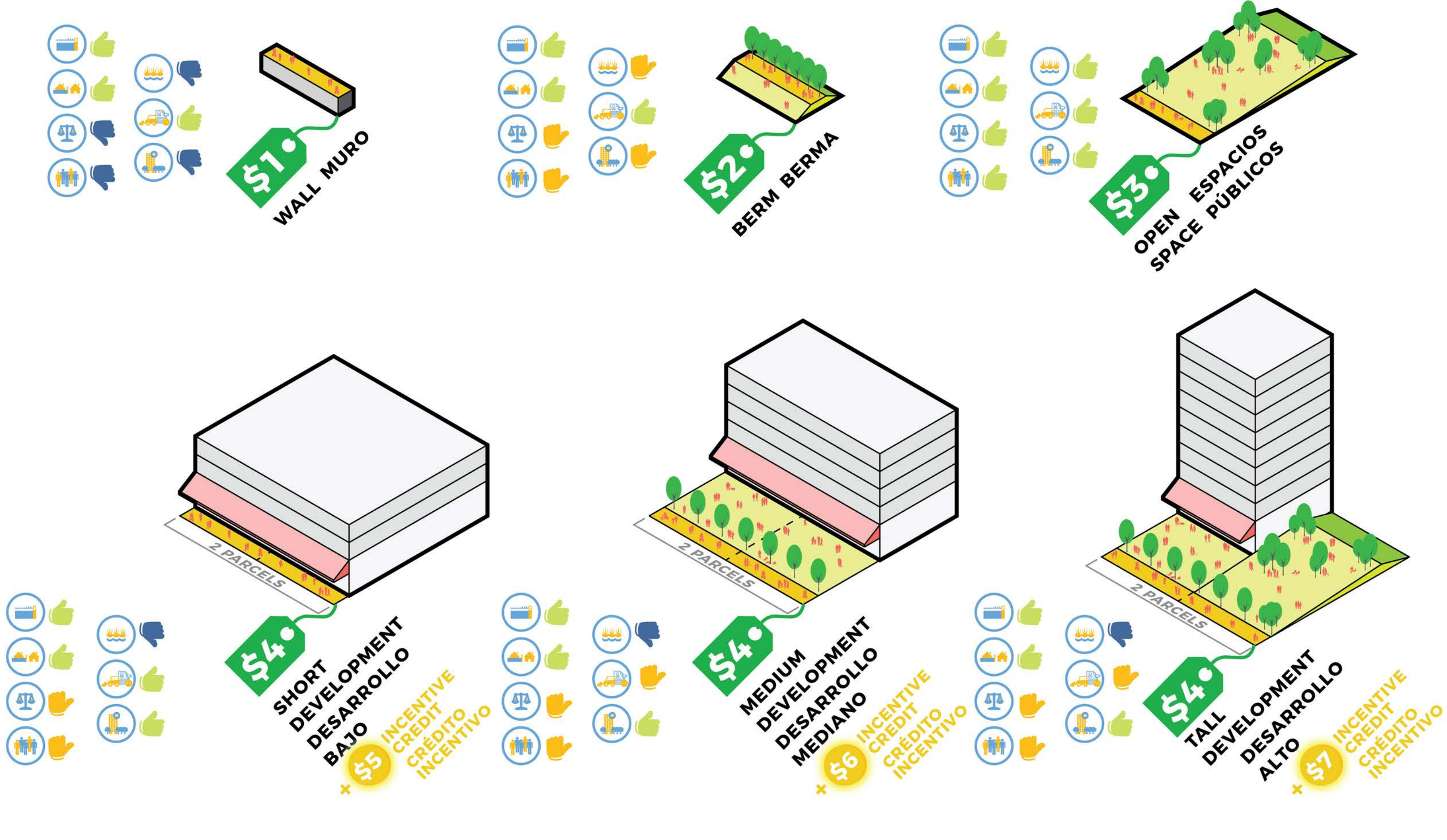


1. GREEN PARK

2. AMPHITHEATER AND PLAZA

FLOOD PROTECTION ACTIVITY

The waterfront protection game asked participants to use a kit of parts to protect a stretch of hypothetical waterfront with a constrained budget. Protection took the form of wall, berm, elevated open space, and development. Protective measures had different abstracted costs and development came with incentive credit to purchase non-development protective measures. All components of the kit of parts were considered to equally protect against flood events (including sea level rise) and to be equally adaptive. Otherwise, each component had different evaluation criteria in five other categories.



1. FURNITURE/SEATING | SILLAS/BANCOS



2. PLAZA/EVENT SPACE | PLAZA/ESPACIO PARA EVENTOS



3. PLANTING | PLANTAS



4. SITE AMENITIES | COMODIDADES DE SITIO



5. OTHER PROGRAMS/SPACE YOU ARE INTERESTED IN? | OTROS PROGRAMAS/ESPACIOS QUE LE INTERESARÍAN?

Edible learning garden
Wild Space
Dog park
Urban farm

MORE COMMENTS

The activity tasked participants with weighing the benefits and drawbacks of the protective approach they chose to take. Participants brought their own biases with regards to development, types of open space, and waterfront access but evaluated their schemes on the same criteria provided to them by the design team. Each of the elements (flood wall, berm, open space, development) were given 'scores' for each of the criteria and the total score of any given scheme was tallied. The average scores for all schemes created during the meeting is shown here.

