

**55 Shattuck St.**  
**Review under Memorandum of Agreement**  
**Boston Landmark Commission Meeting**  
**Sept 27<sup>th</sup>, 2016**

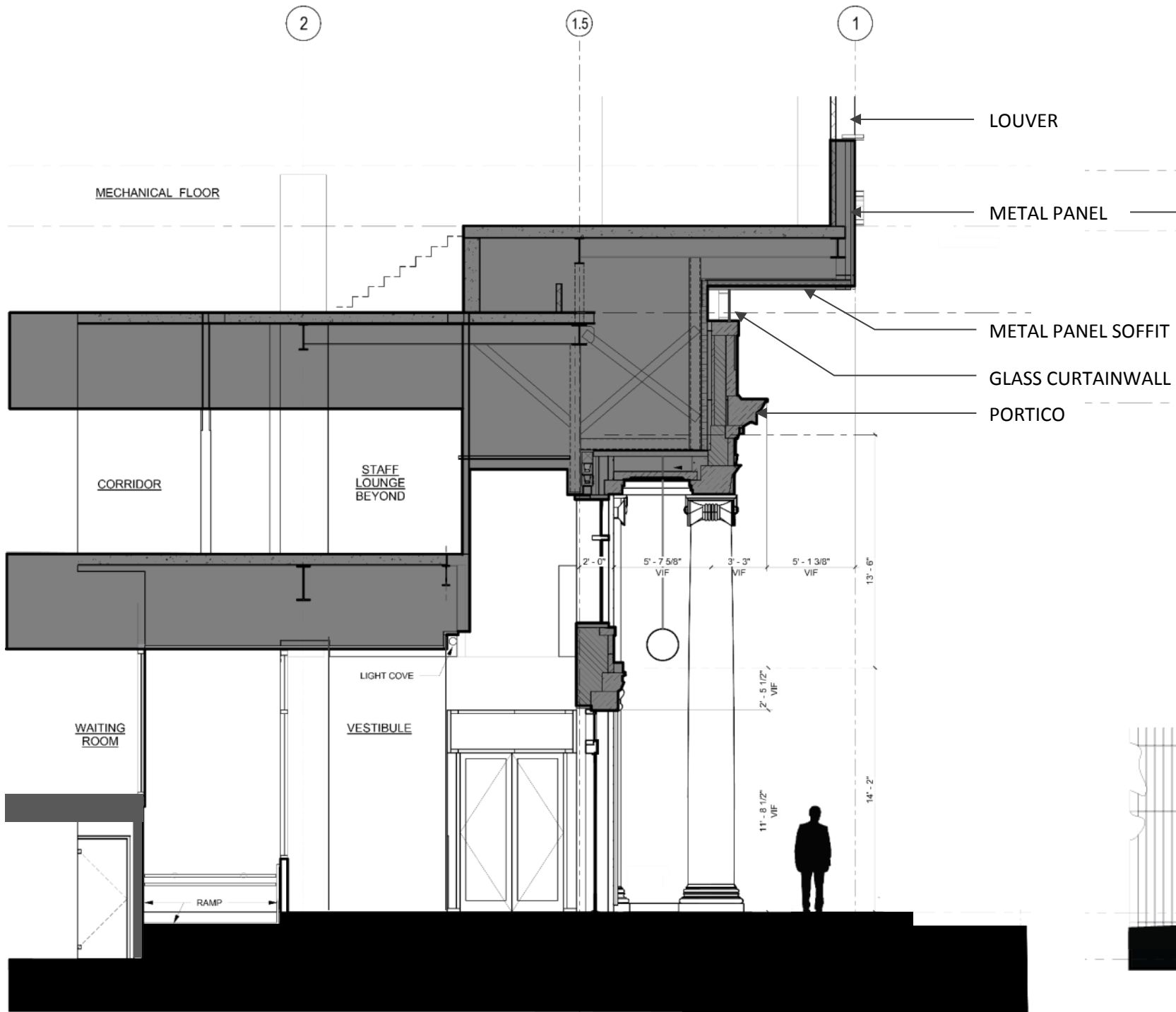
BOSTON CHILDREN'S CLINICAL BUILDING



# Agenda

- Recap
- 100% Design Development Review
  - Portico Vestibule
  - Exterior Elevation & Material Update
  - Lighting Scheme
  - Technical Update
- Discussion

# Recap Apr 2016 - Section and Elevation at Shattuck St.



**WOLBACH SECTION**

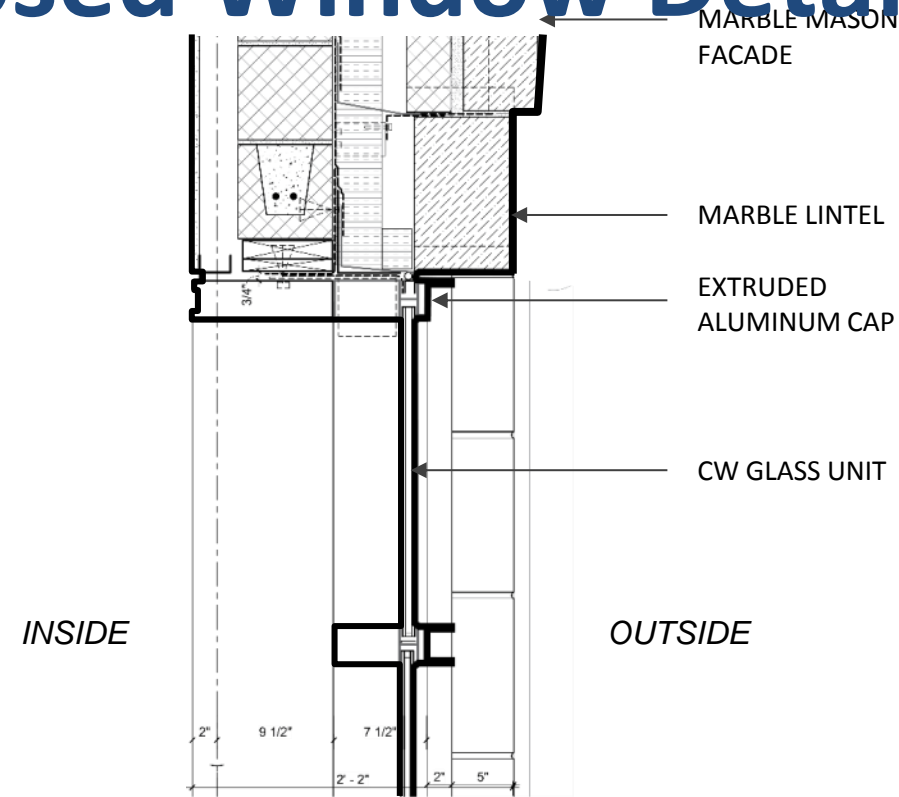


**WOLBACH FAÇADE ELEVATION**

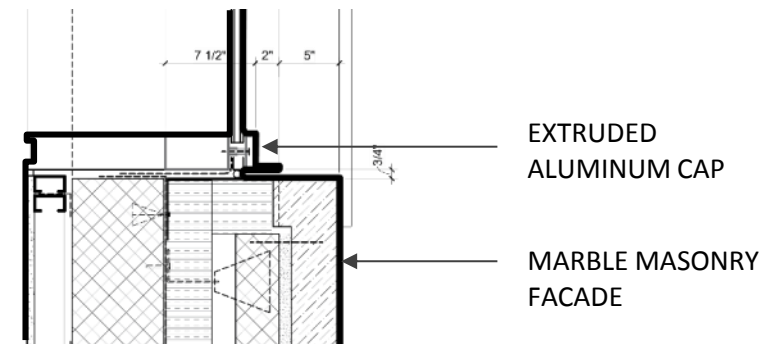
# Recap Apr 2016 - Proposed Window Details



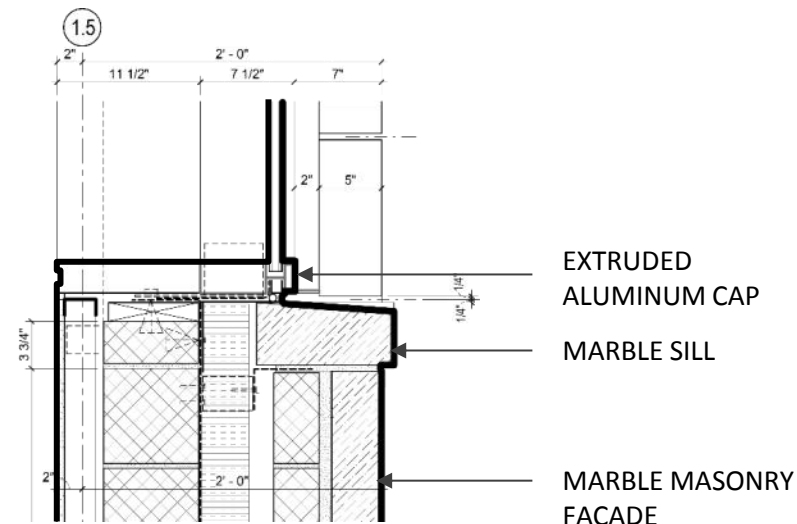
AXON - NTS



WINDOW HEAD



WINDOW JAMB



WINDOW SILL



EXISTING WINDOW

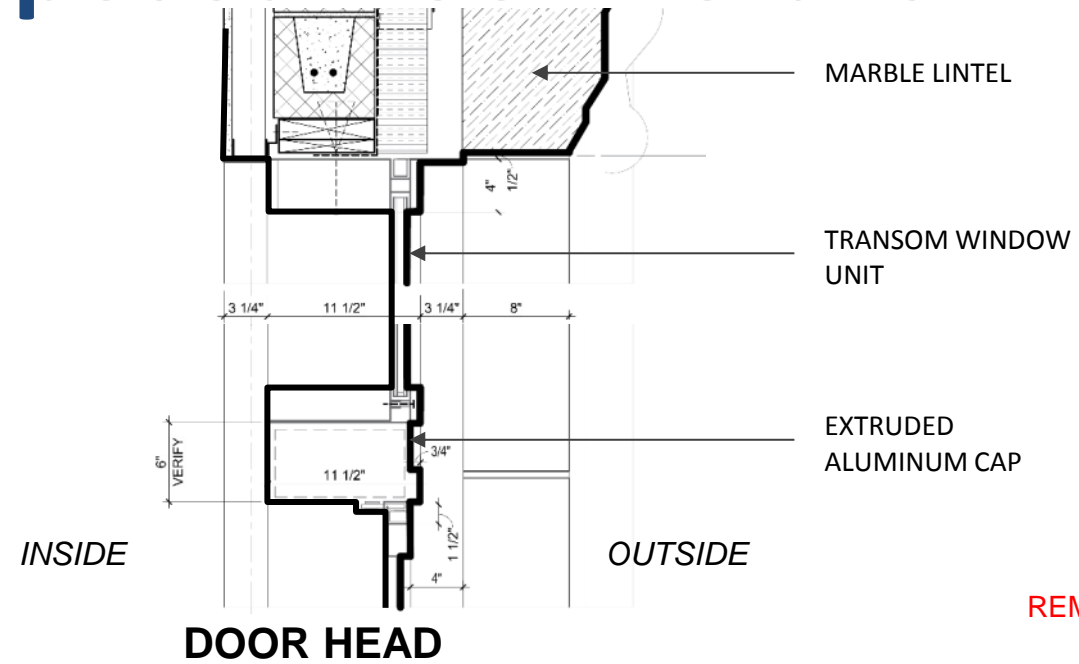


HISTORICAL WINDOW

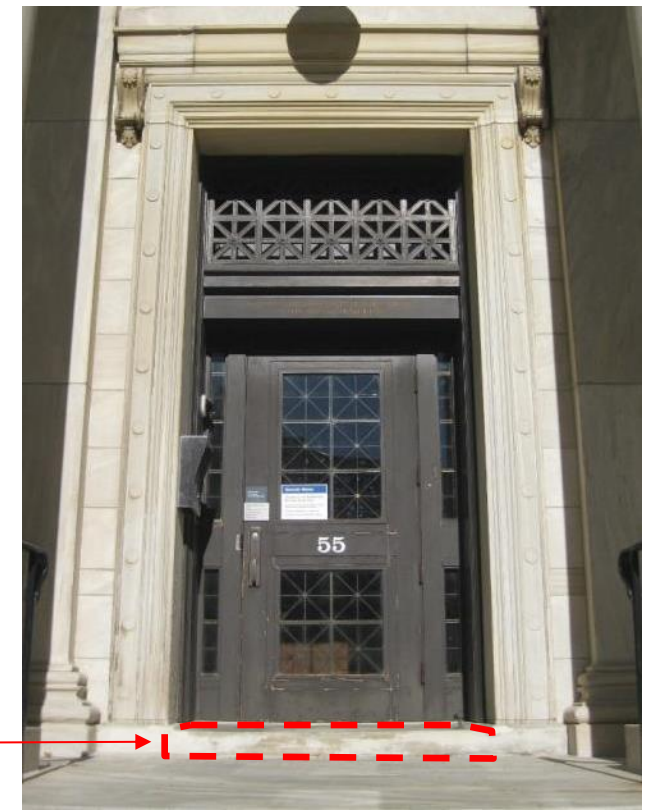
# Recap Apr 2016 - Proposed Door Details



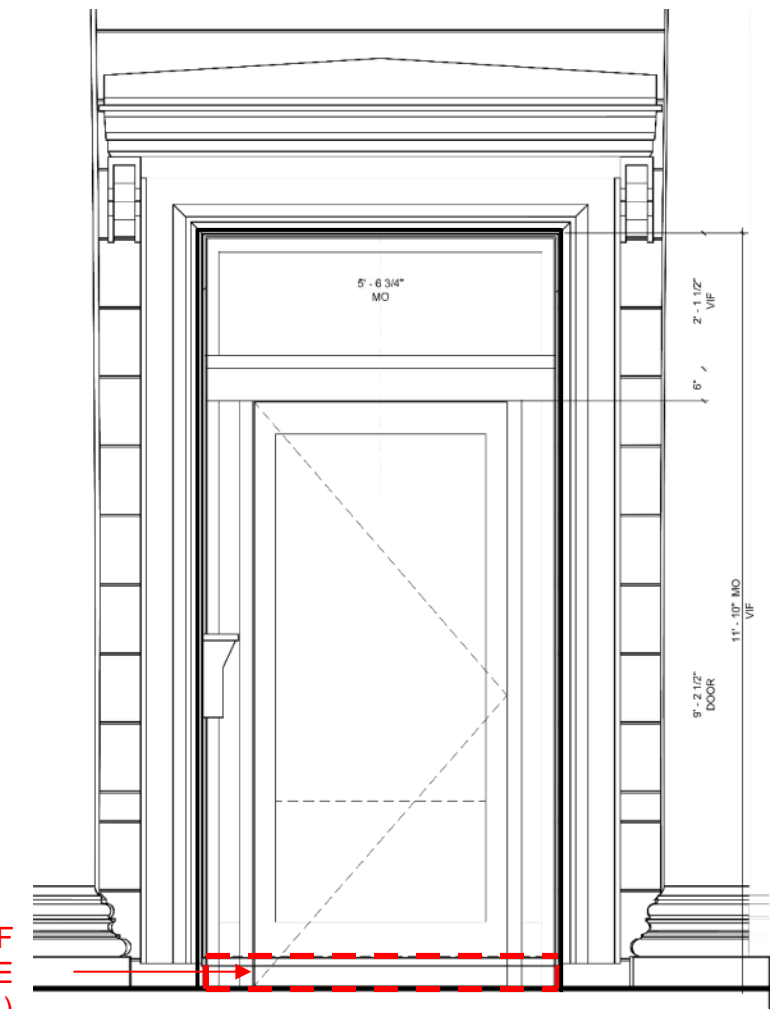
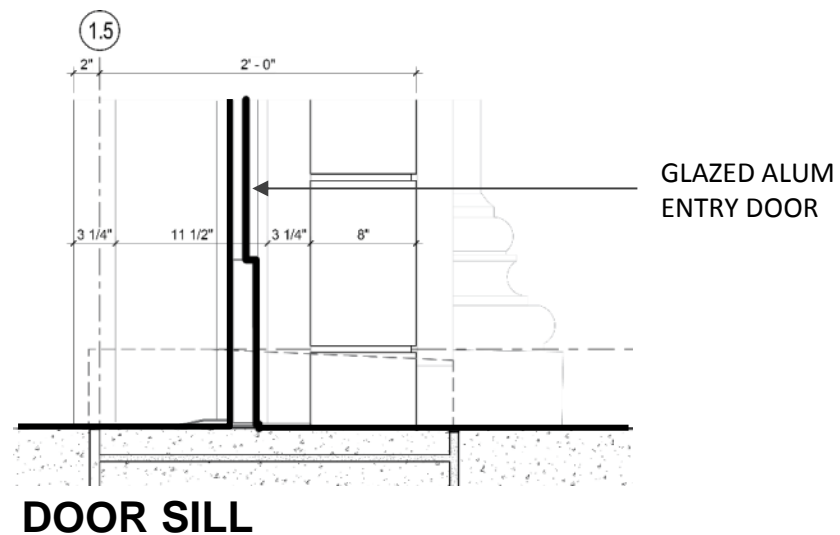
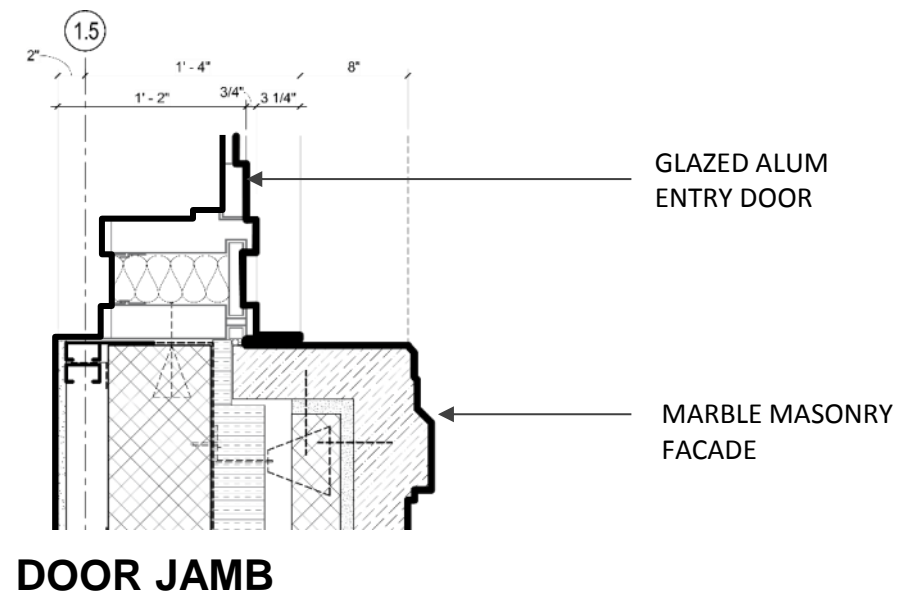
AXON - NTS



PORTRION OF BASE TO BE REMOVED (ADA)

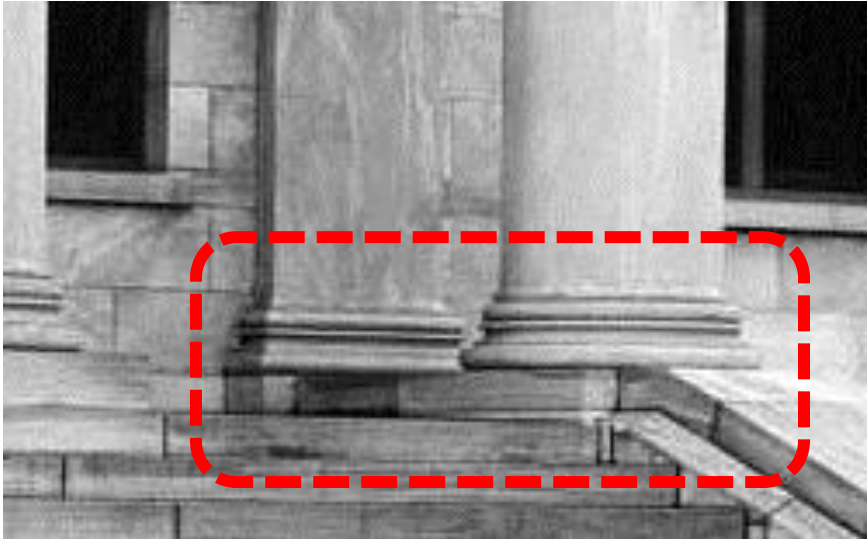
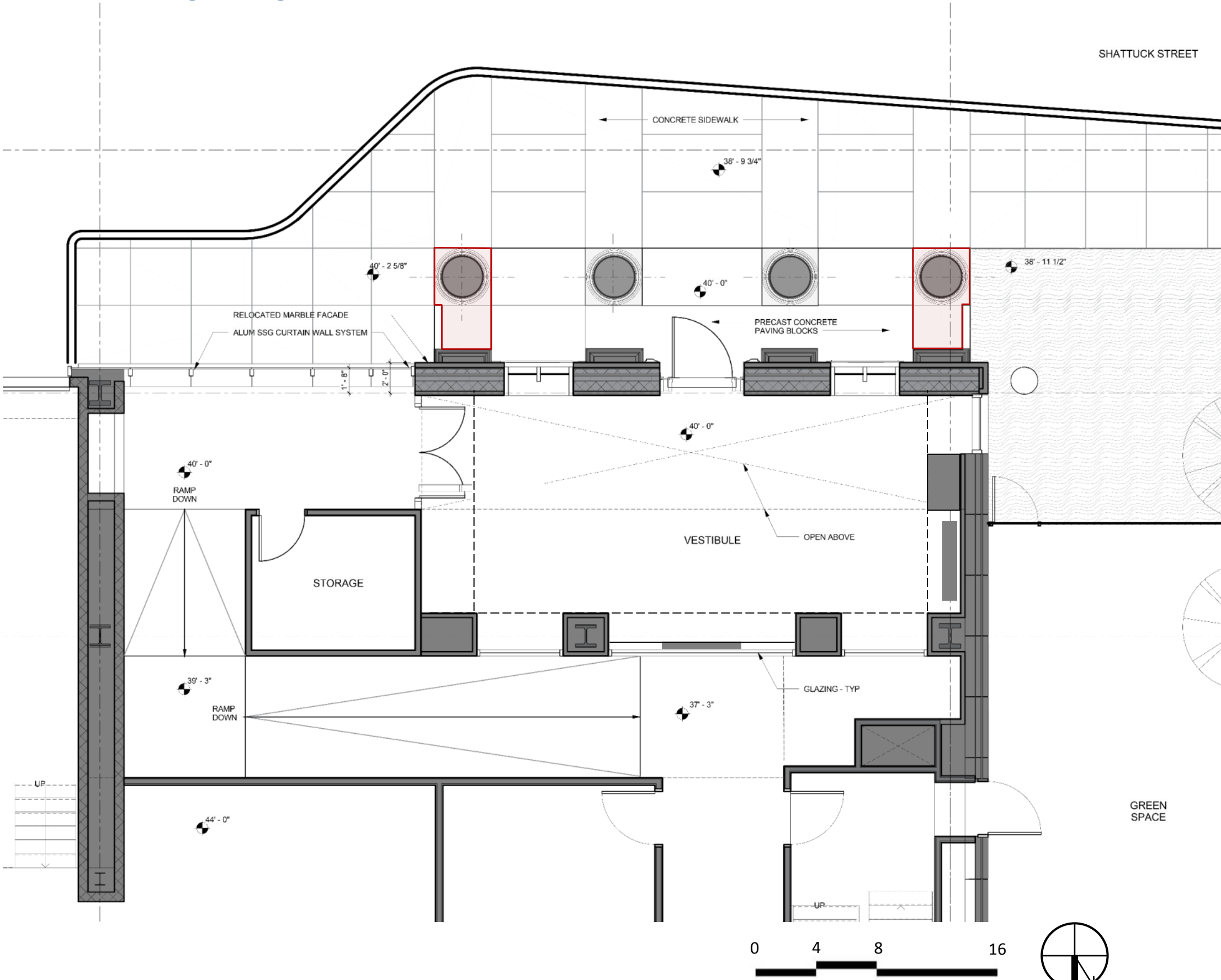


EXISTING DOOR



PORTRION OF BASE TO BE REMOVED (ADA)

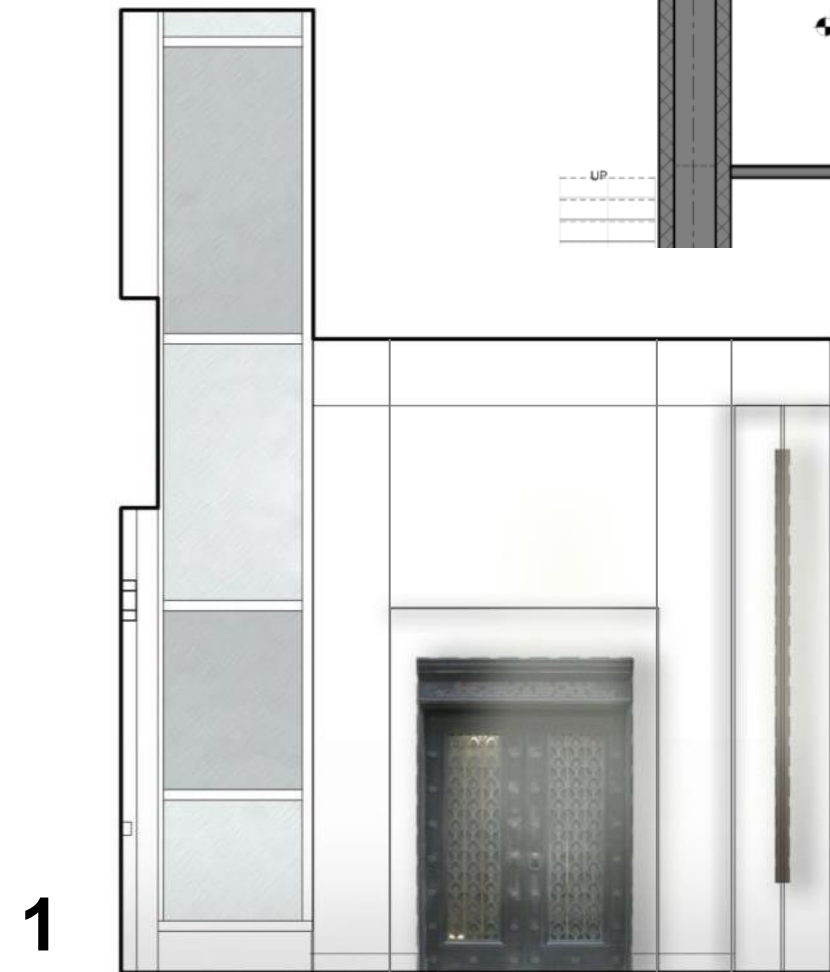
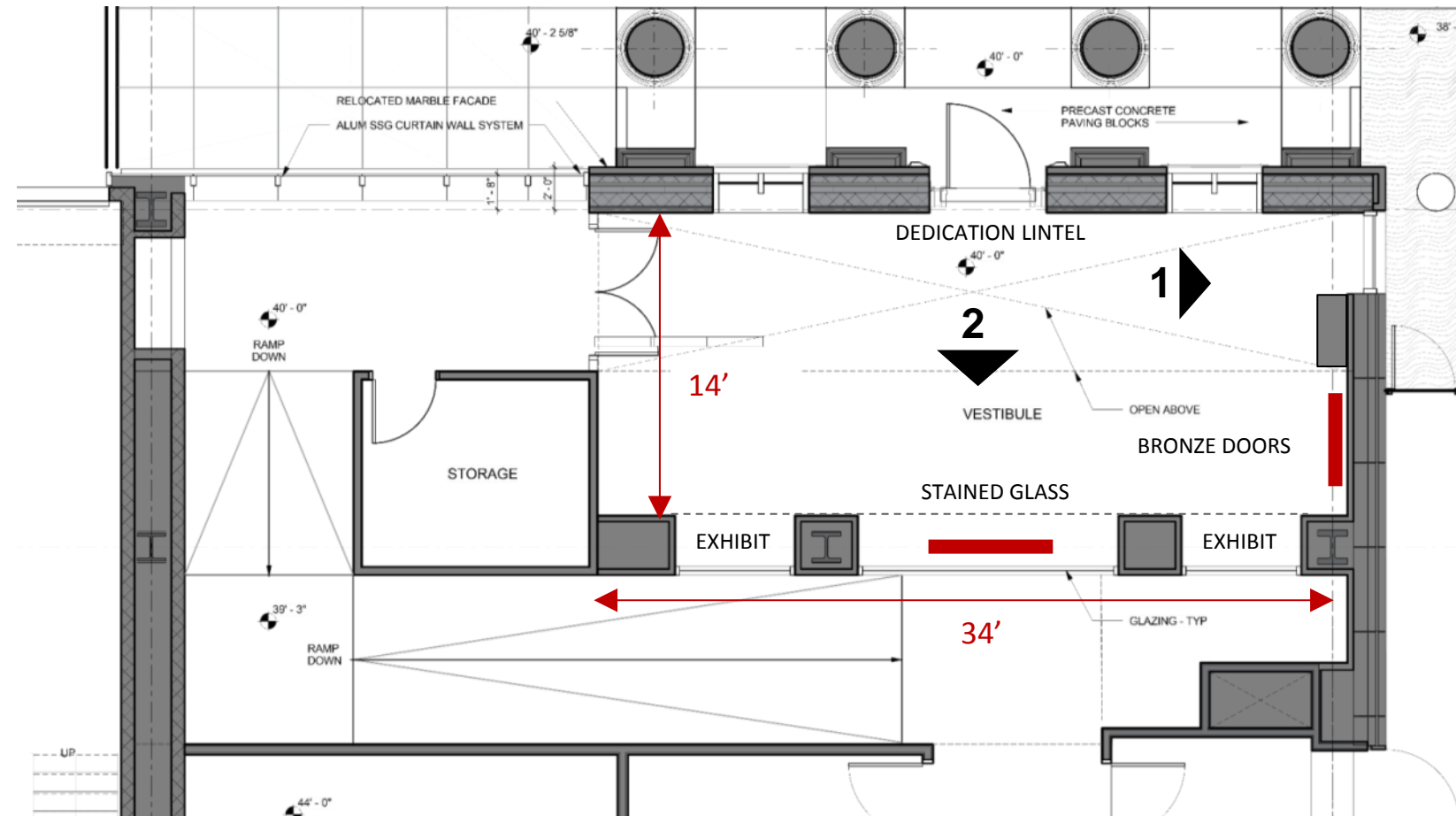
# Recap Apr 2016 - Plan of Vestibule at Shattuck St.



EXISTING PLINTH



# Recap Apr 2016 - Option 1 Location: Portico Vestibule



Bronze Door



Exhibit

Stained Glass Window

Exhibit

# Interior of Portico Vestibule





# Exterior Elevation Update



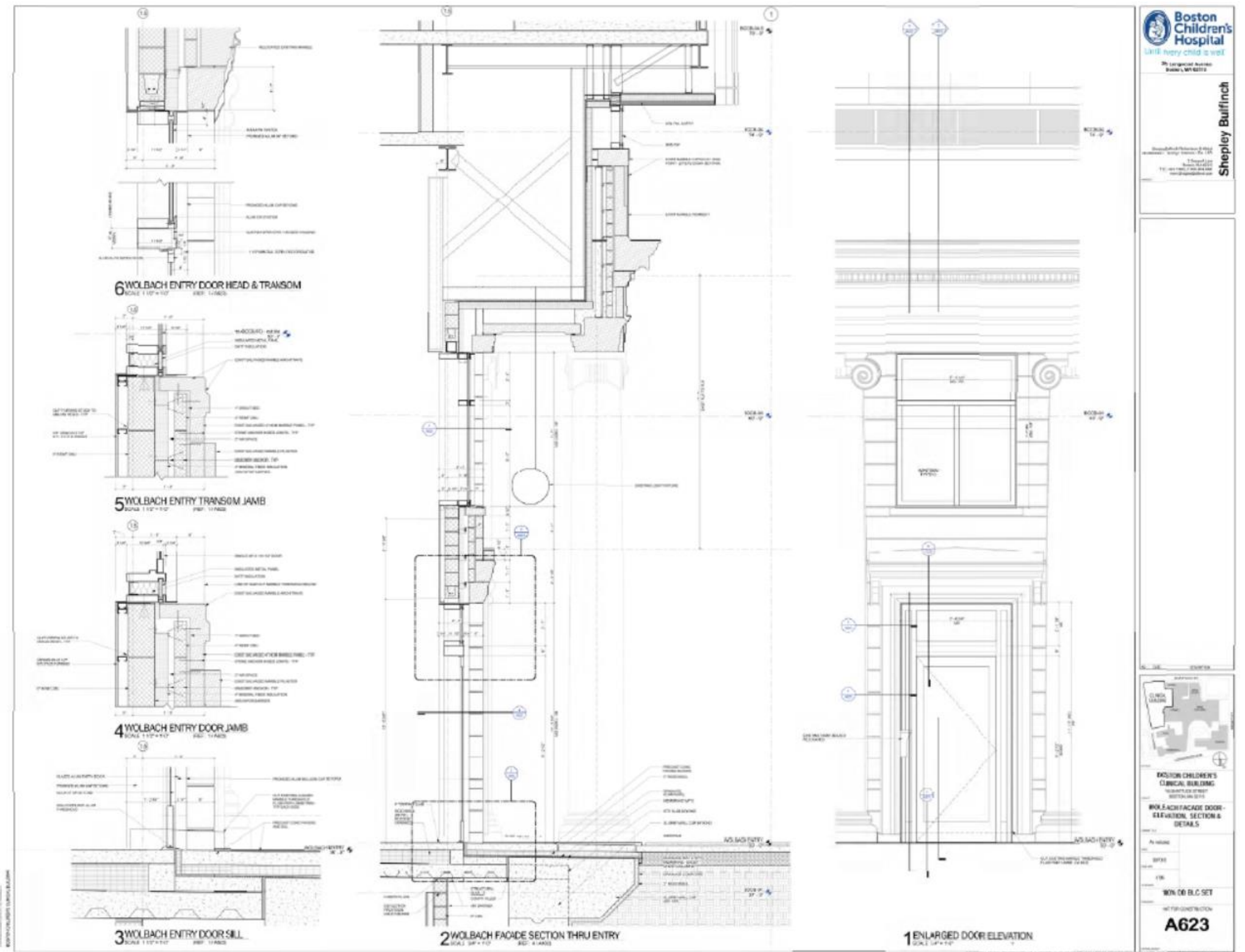
# Exterior Lighting Scheme



# Reassembly Technical Update

Development of technical details for reassembly in attempt to match original handling and disposition:

- Minimize refabrication of pieces
- Same or less loading/stress
- Similar handling back into place
- Mason design assist to follow
- Integration with modern exterior envelope
- A mass masonry veneer



# Discussion

