

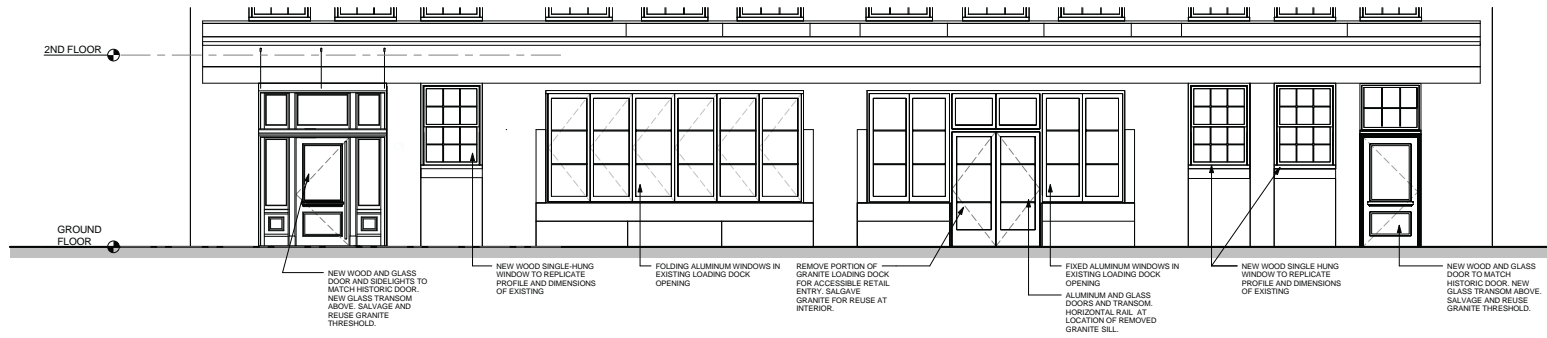
# 9 Channel Center

---

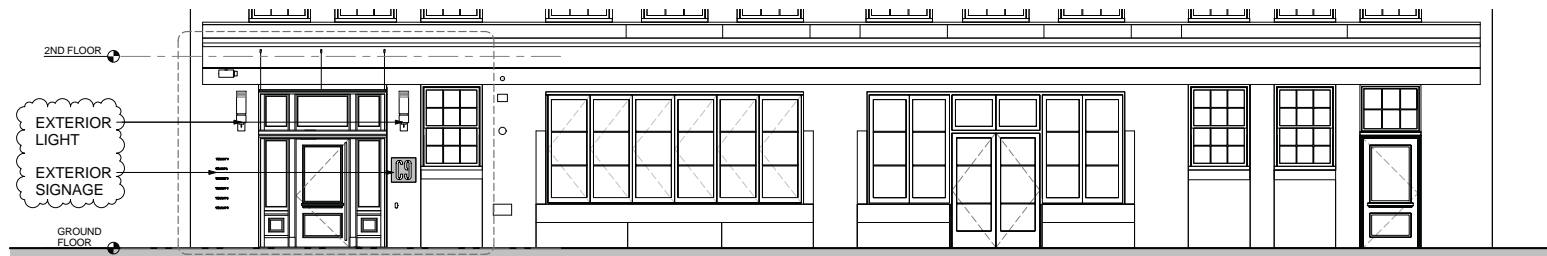
Boston, MA

Fort Point Channel District Landmark Commission  
October 13, 2016





1 PREVIOUSLY APPROVED WEST GROUND FLOOR ELEVATION

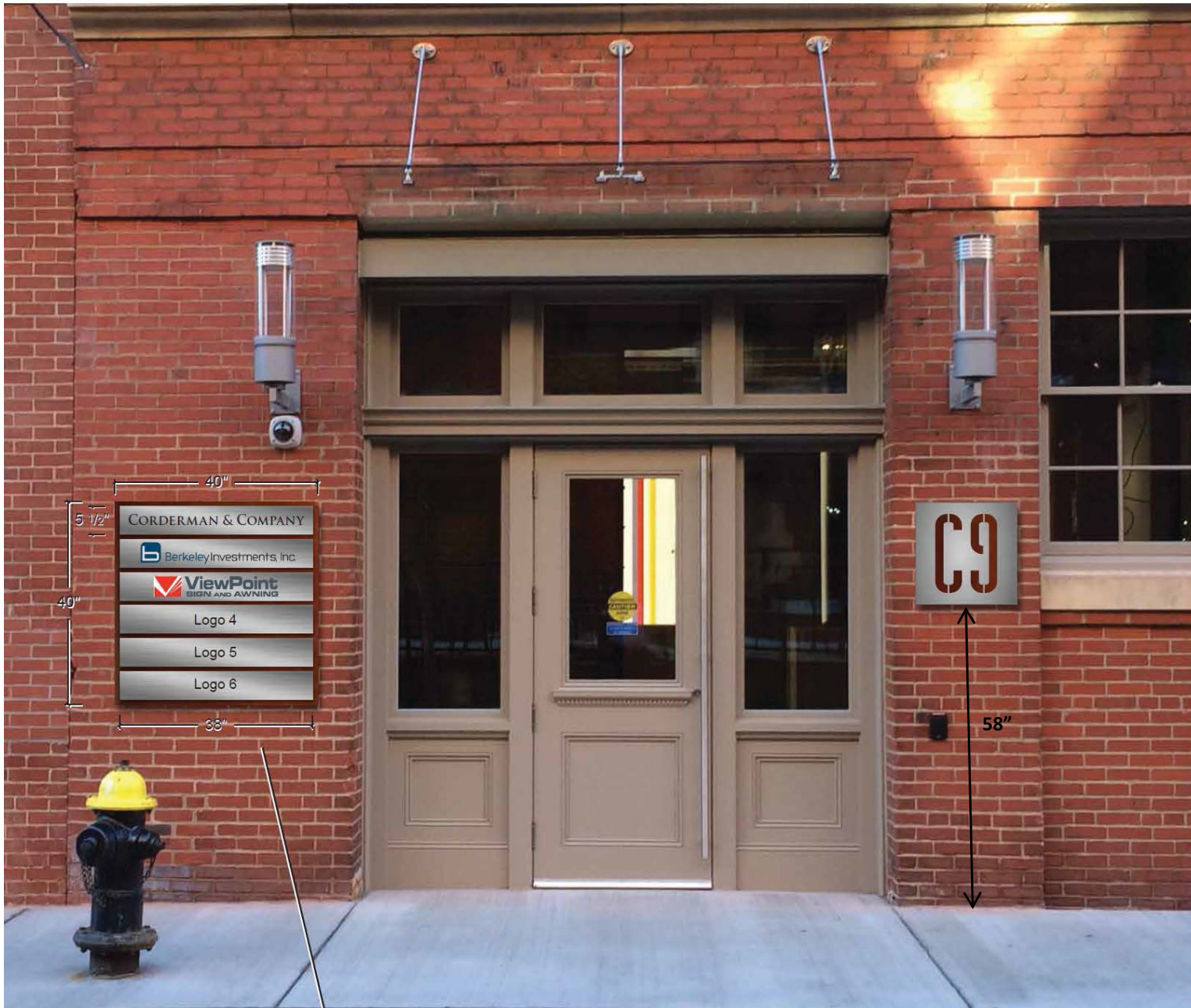


2 PROPOSED WEST GROUND FLOOR ELEVATION





1 PROPOSED WEST GROUND FLOOR ELEVATION



Brushed Stainless Steel Tenant Panels with Concealed Inset Acrylic Backer/Spacers - Digitally Printed Vinyl & HP Vinyl Graphics. 3/8" (thick) Stainless Steel Backer with Copper Overlay. Fasteners will be through mortar joints only.



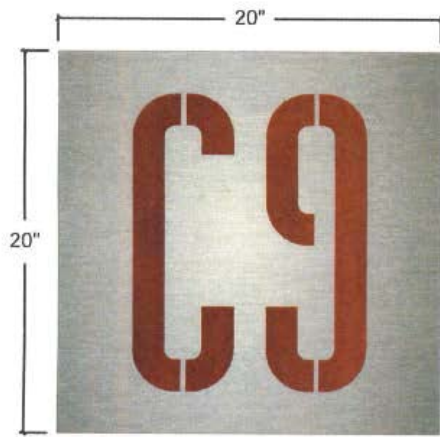
Front façade with pendant lights shown and security camera removed



1 COMBINED PROGRESS PHOTOGRAPHS OF WEST FACADE



1 HESS RESIDENZA SCONCE  
8" = 1'-0"



**E1** Elevation: #7384 (Qty 1) Exterior Wall Sign  
Scale: 1 1/2" = 1'

**Description:**

(Qty 1) Exterior Wall Sign

- 3/8" Brushed stainless steel panel.
- Graphics are stencil-cut to revealing backer panel. (waterjet-cut)
- Backer panel is 24 gauge antique copper laminate. (supplied by customer)
- Backer is inset from edge, so it is not visible from edges.
- Backer attached with adhesive and studs.
- Sign is mounted to wall with studs, 1/8" Space-Off (studs in mortar joints)

**Logo:**

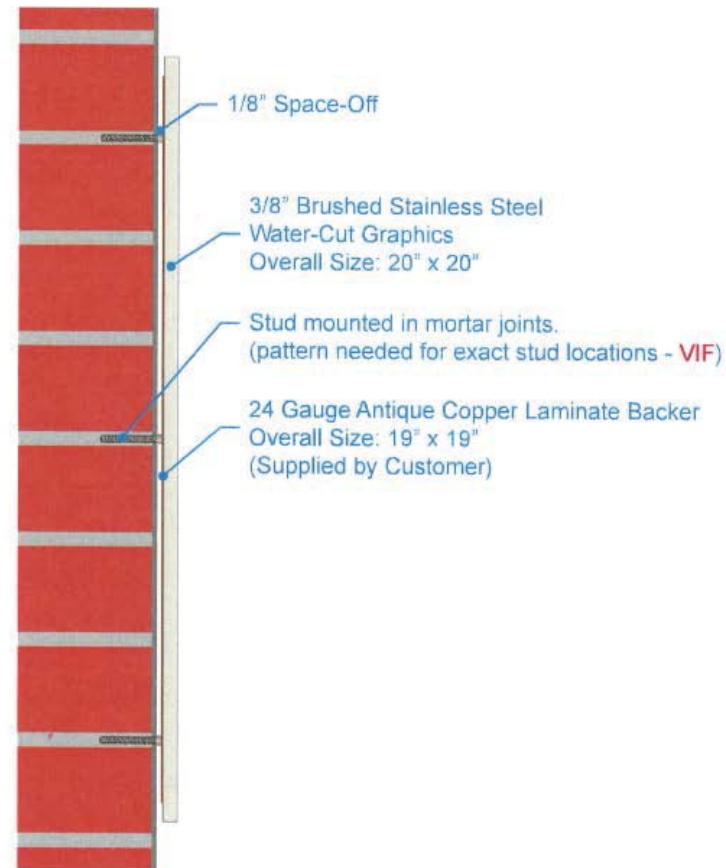
Recreated by ViewPoint (Verify Art - VA)

**Colors:**

- Panel - Brushed Stainless Steel Satin finish (horizontal grains)
- Backer - Antique Copper laminate (supplied by customer)

**Installation:**

By Viewpoint.



**S** Side View:  
Scale: 3" = 1'





Channel Center Building Signage for Context



Channel Center Tenant Signage for Context