

FROM MT. VERNON ST

P1  
H2.6

P3  
H2.7

P15  
H2.10

WEST CEDAR STREET

P2  
H2.6

FROM CHESTNUT ST.

- (A) PROPOSED SECURITY PANEL AT FRONT ENTRY
- (B) CONDENSERS ON ROOF (3)
- (C) REPLACE SIDE DOOR AT ACORN STREET
- (D) REPLACE COPING AT ACORN STREET
- (E) INSTALL SINGLE INLET FIRE DEPARTMENT CONNECTION

AREA NOT  
VISIBLE FROM  
PUBLIC WAY

(A)

2  
H2.2

(E)

(B)

1  
H2.3

(C)

(D)

ACORN STREET (PRIVATE WAY)

P7  
H2.9

P8  
H2.9

P9  
H2.9

P10  
H2.9

P11  
H2.9

P12  
H2.9

P13  
H2.9

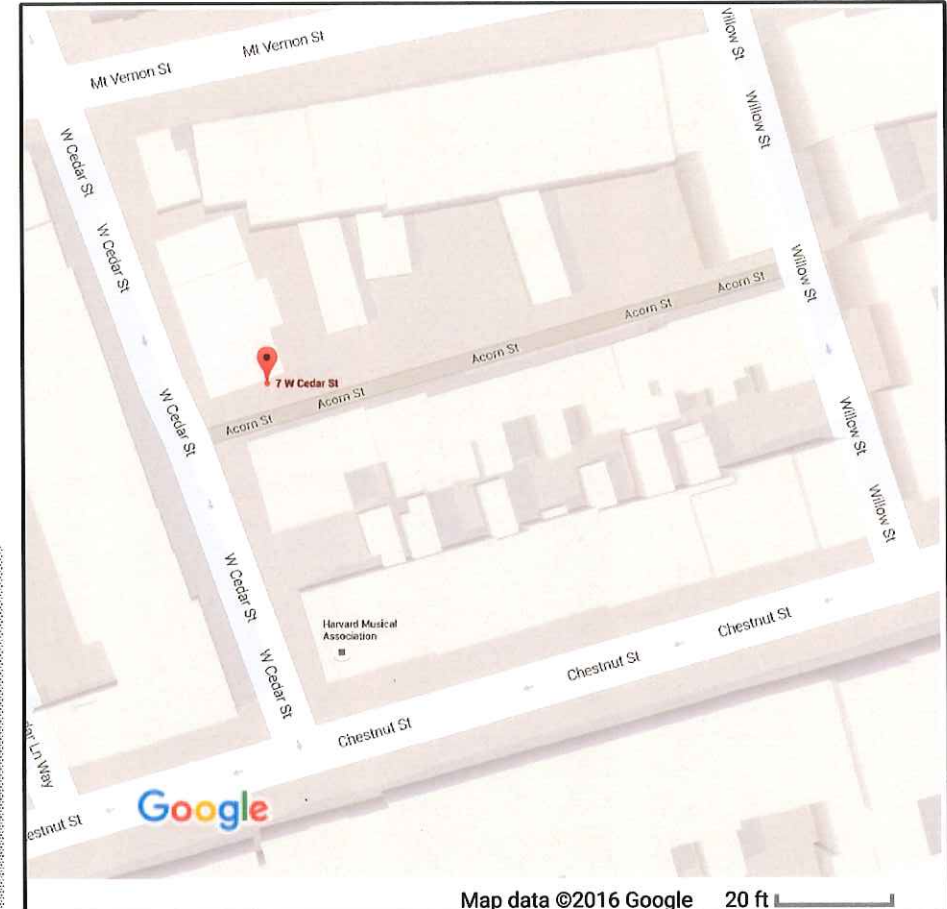
P14  
H2.9

P4  
H2.7

P5  
H2.7

P6  
H2.8  
FROM WILLOW ST

WILLOW STREET



2 SITE PLAN

JOSEPH KENNARD ARCHITECTS, INC

141 DORCHESTER AVE R204 BOSTON MA 02127

617 292 8989

www.jkennard.com

SEP 01, 2016

BHAC CERTIFICATE OF APPROPRIATENESS

SITE PLAN & PHOTO KEY

THOMAS RESIDENCE

7 WEST CEDAR STREET, BOSTON, MA 02108

DRAWING

H2.1

OCT 5, 2016

1

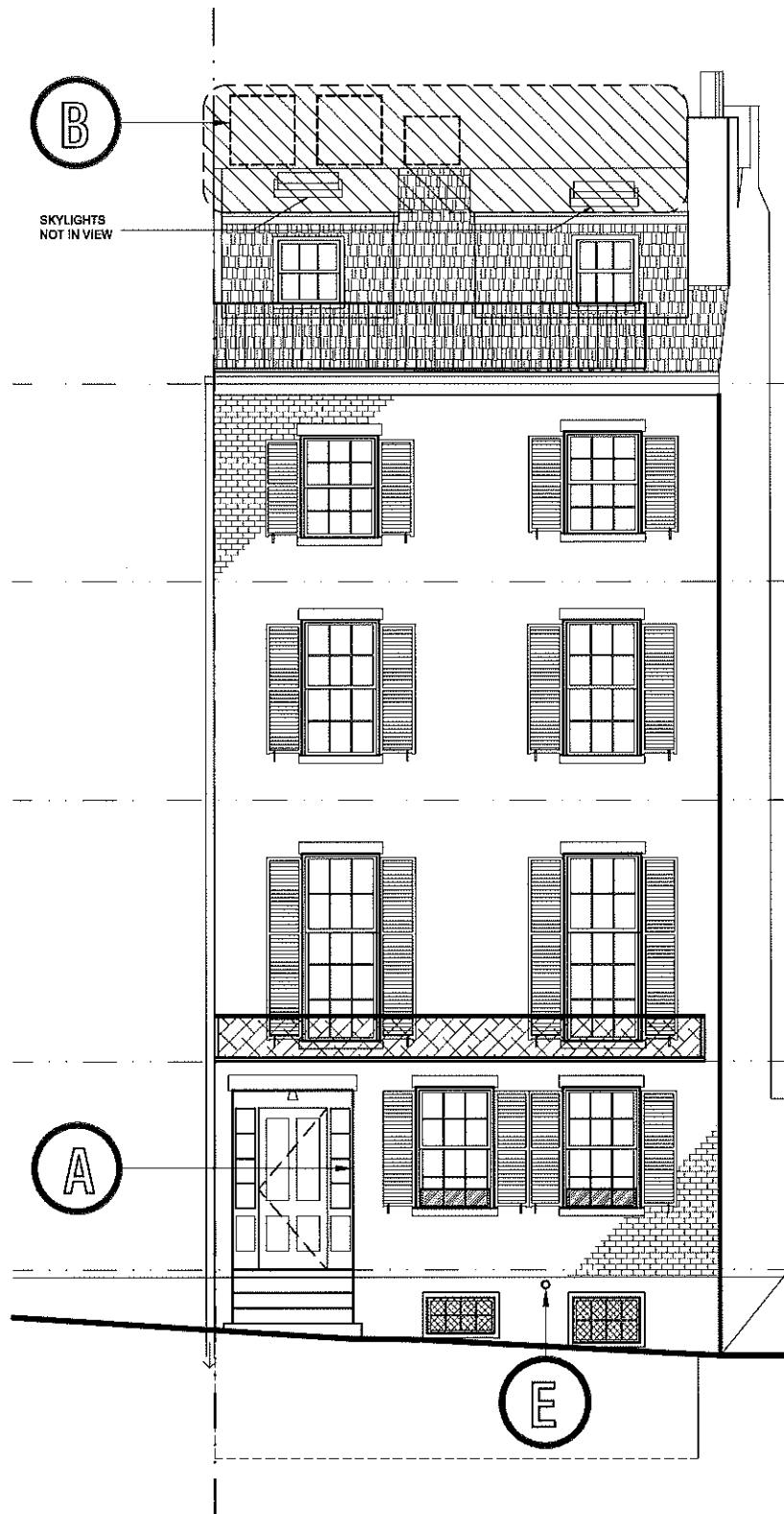
1 PHOTO KEY PLAN

1/8"=1'-0"

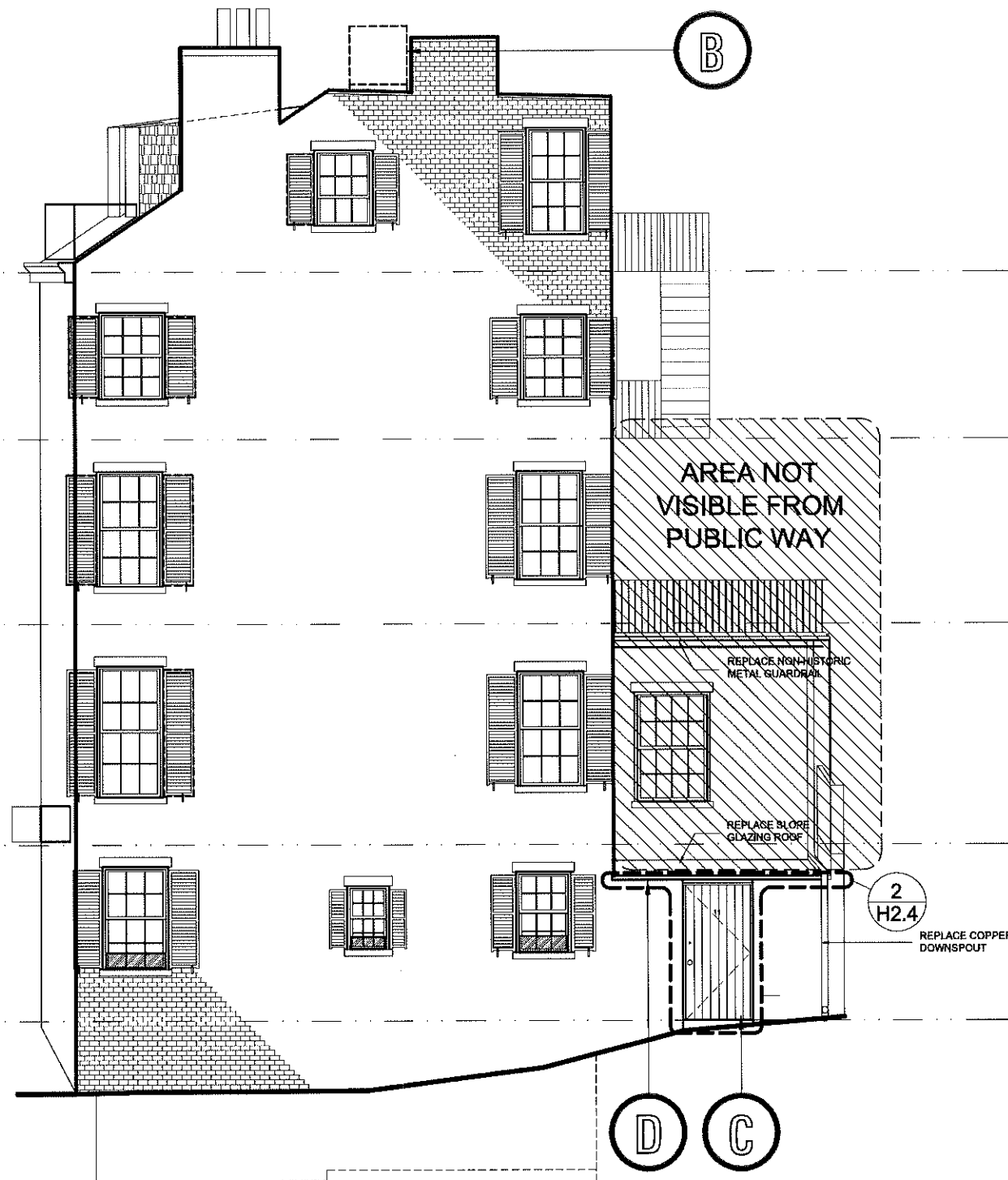
0 4' 8' 16'







2 EXT. ELEVATION - NORTH (W CEDAR)  
1/8"=1'-0"



1 EXT. ELEVATION - WEST (ACORN)  
1/8"=1'-0"

- A** PROPOSED SECURITY PANEL AT FRONT ENTRY
- B** CONDENSERS ON ROOF (3)
- C** REPLACE SIDE DOOR AT ACORN STREET
- D** REPLACE COPING AT ACORN STREET
- E** INSTALL SINGLE INLET FIRE DEPARTMENT CONNECTION

BHAC CERTIFICATE OF APPROPRIATENESS

BUILDING ELEVATIONS

**THOMAS RESIDENCE**  
7 WEST CEDAR STREET, BOSTON, MA 02108

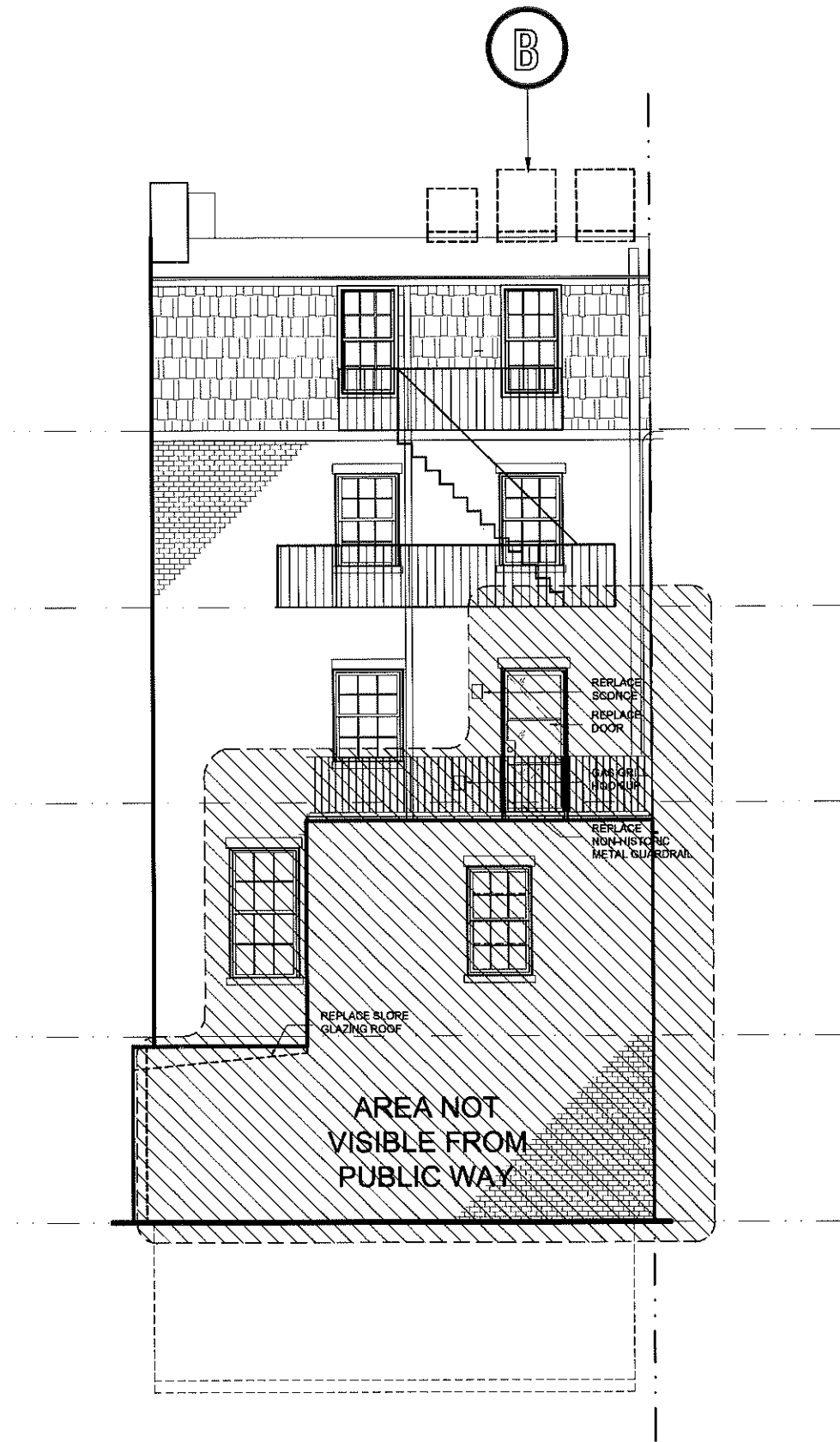
**JOSEPH KENNARD ARCHITECTS, INC**

141 DORCHESTER AVE R204 BOSTON MA 02127  
617 292 8989  
www.jkennard.com

DRAWING

**H2.2**

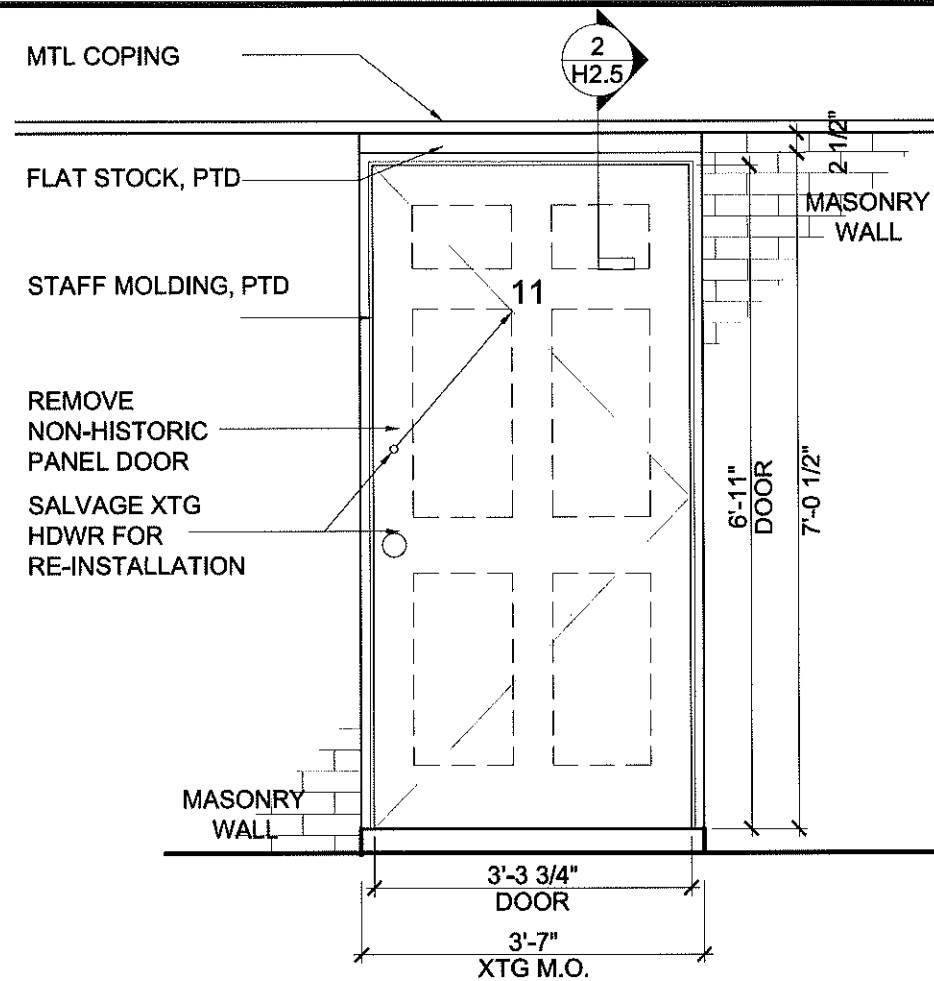
OCT 5, 2016



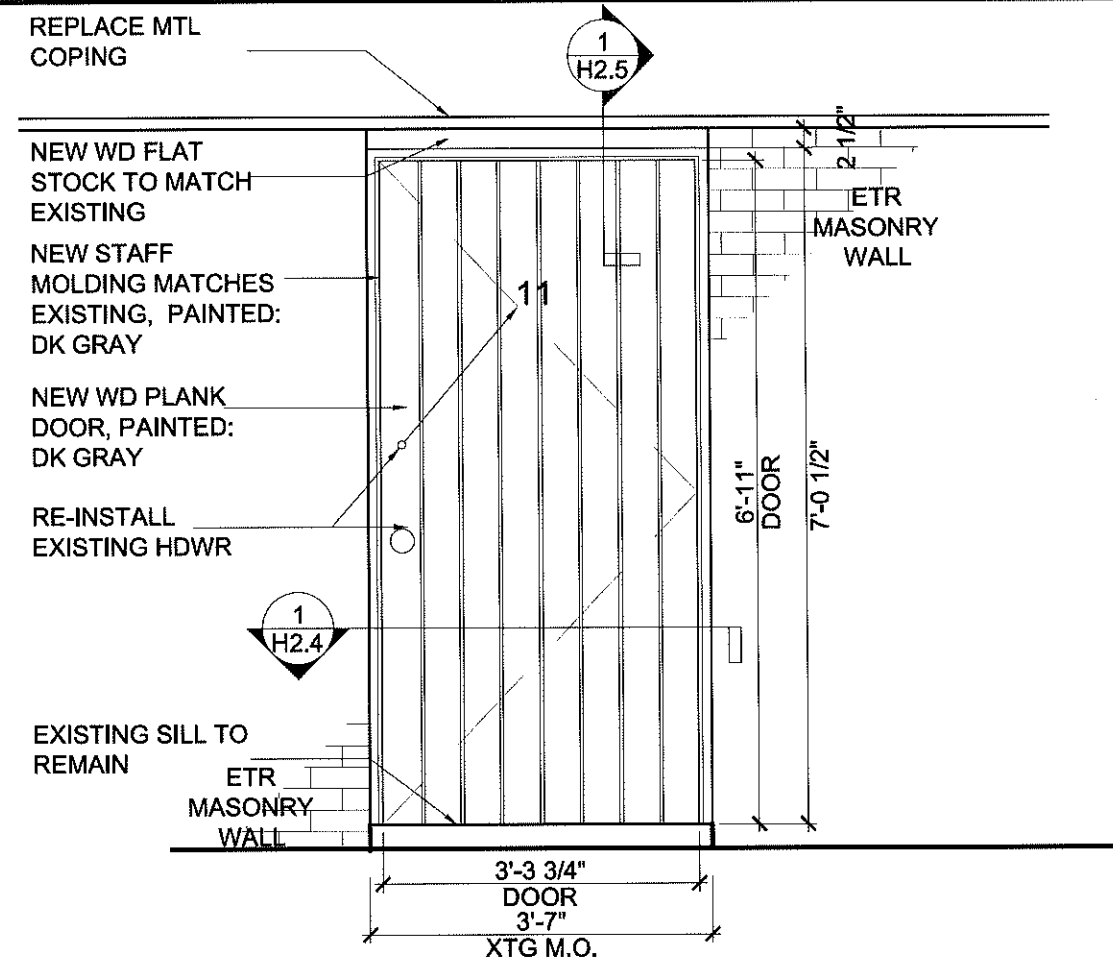
- A** PROPOSED SECURITY PANEL AT FRONT ENTRY
- B** CONDENSERS ON ROOF (3)
- C** REPLACE SIDE DOOR AT ACORN STREET
- D** REPLACE COPING AT ACORN STREET
- E** INSTALL SINGLE INLET FIRE DEPARTMENT CONNECTION

**1** EXTERIOR ELEVATION - SOUTH  
1/8"=1'-0"

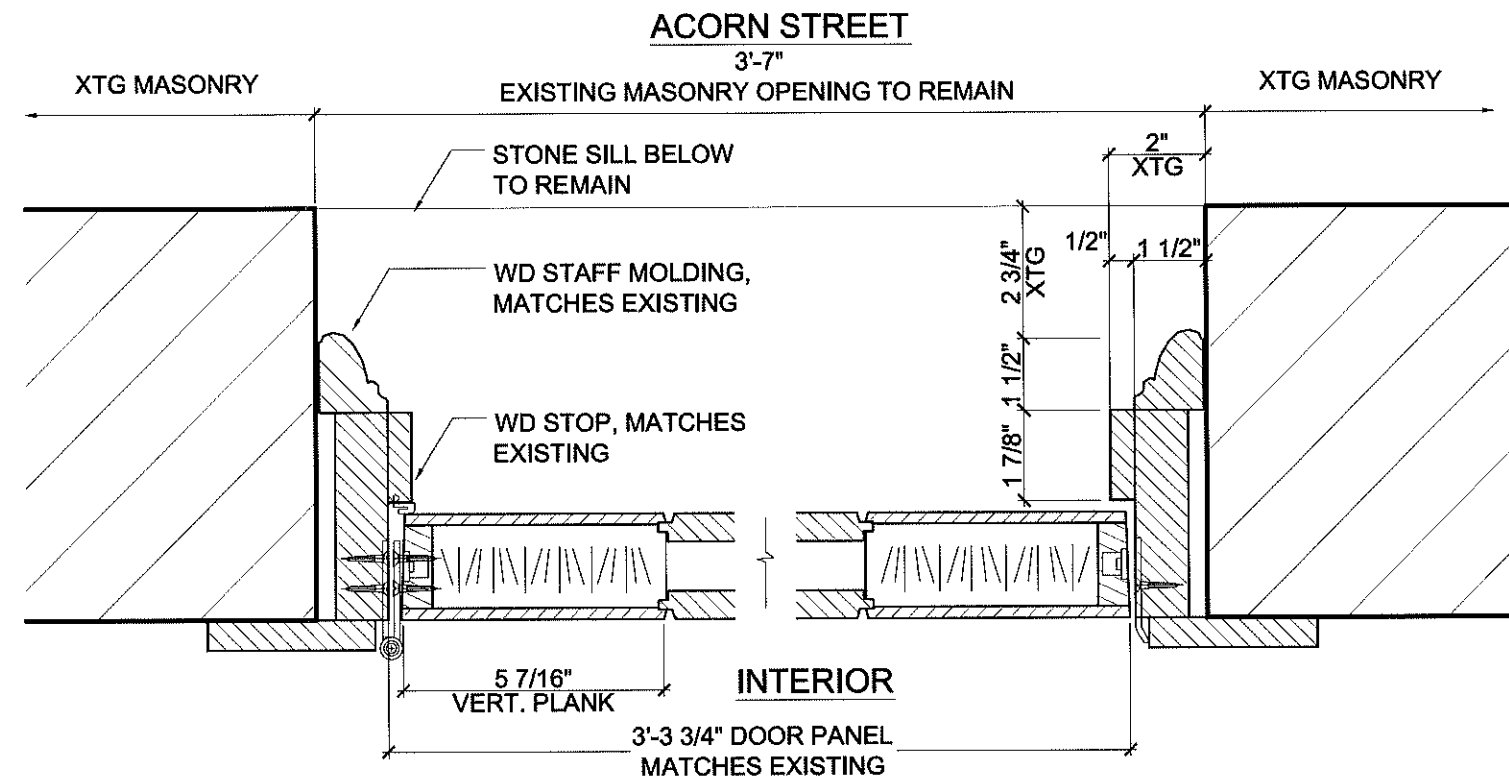
DRAWING	BHAC CERTIFICATE OF APPROPRIATENESS BUILDING ELEVATIONS	JOSEPH KENNARD ARCHITECTS, INC 141 DORCHESTER AVE R204 BOSTON MA 02127 617 292 8989 www.jkennard.com
	THOMAS RESIDENCE 7 WEST CEDAR STREET, BOSTON, MA 02108	
H2.3		OCT 5, 2016



3 ELEVATION: DOOR (ACORN STREET) - EXISTING  
1/2"=1'-0"



2 ELEVATION: DOOR (ACORN STREET) - PROPOSED  
1/2"=1'-0"



1 DOOR (ACORN STREET) - PLAN DETAIL-JAMB  
3"=1'-0"

BHAC CERTIFICATE OF APPROPRIATENESS

DRAWING

DETAILS - DOOR AT ACORN STREET

THOMAS RESIDENCE

7 WEST CEDAR STREET, BOSTON, MA 02108

JOSEPH KENNARD ARCHITECTS, INC

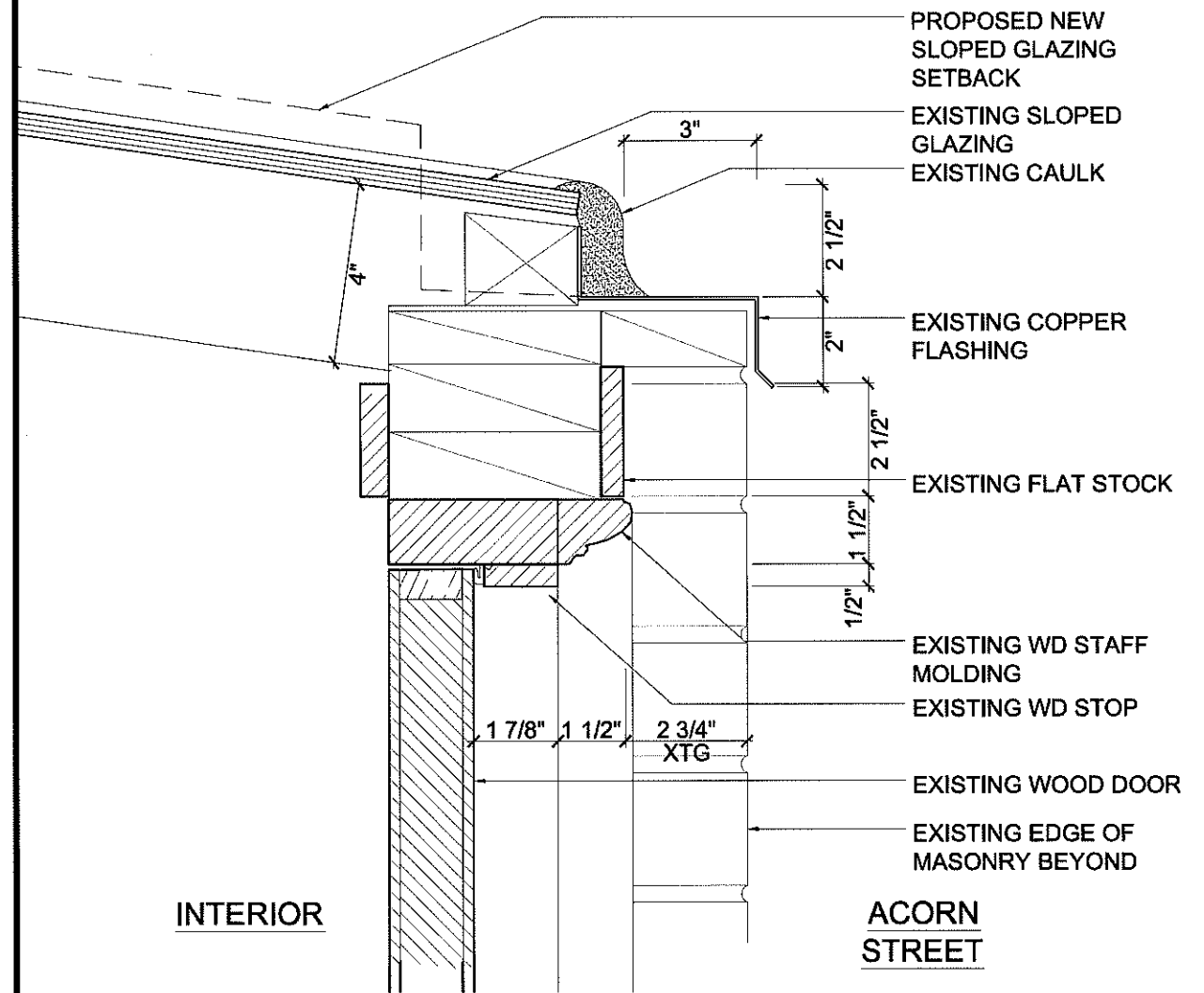
141 DORCHESTER AVE R204 BOSTON MA 02127

617 292 8989

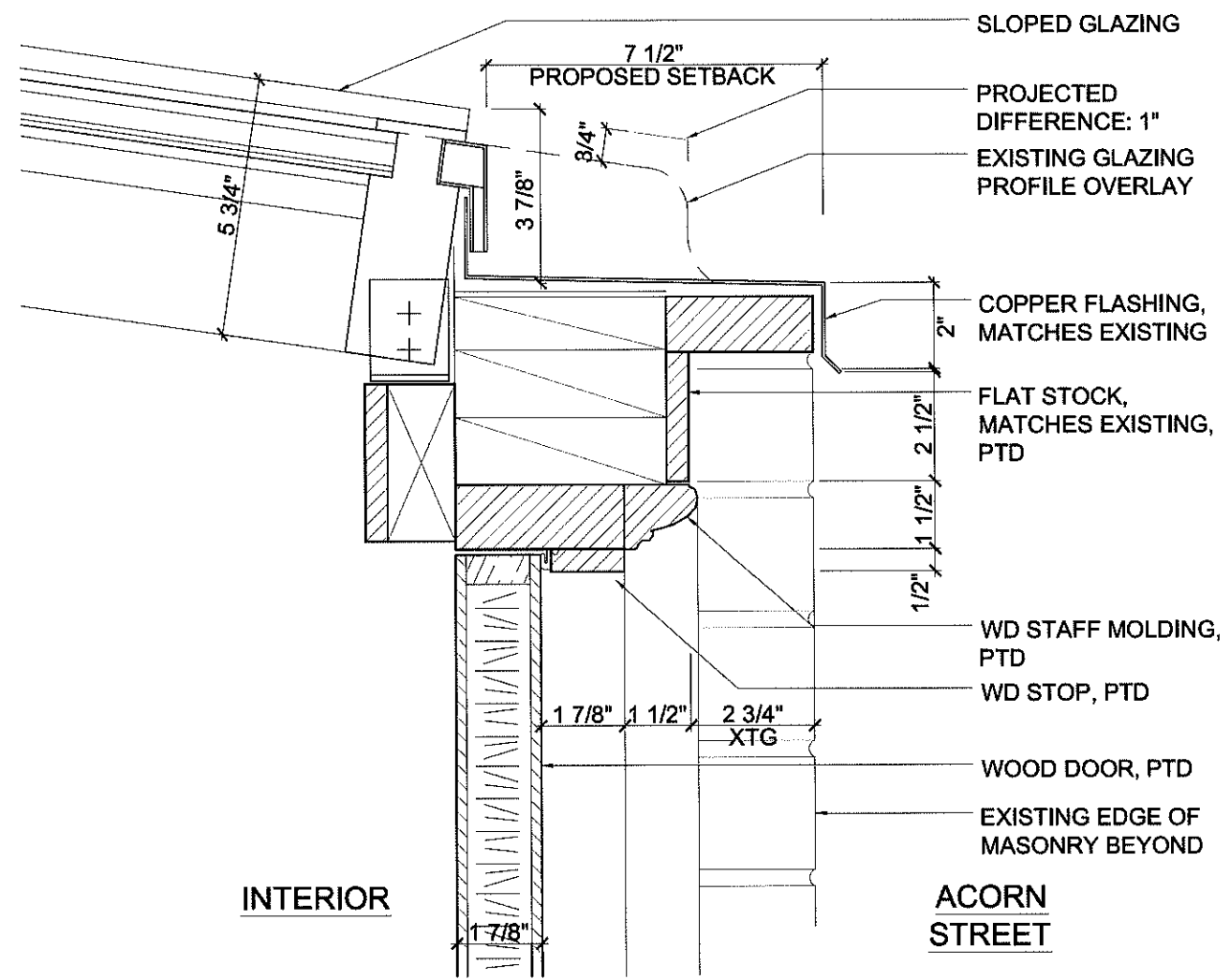
www.jkennard.com

H2.4

OCT 5, 2016



2 EXISTING SECT.DETAIL - COPING/DOOR HEAD  
3"=1'-0"



1 PROPOSED SECT.DETAIL - COPING/DOOR HEAD  
3"=1'-0"

JOSEPH KENNARD ARCHITECTS, INC

141 DORCHESTER AVE R204 BOSTON MA 02127  
617 292 8989  
www.jkennard.com

BHAC CERTIFICATE OF APPROPRIATENESS

DETAILS - DOOR AT ACORN STREET

THOMAS RESIDENCE

7 WEST CEDAR STREET, BOSTON, MA 02108

DRAWING

H2.5

OCT 5, 2016





EXTENDED VIEW DOWN W CEDAR STREET:  
FROM MT. VERNON STREET

**P1** EXISTING PHOTO  
N.T.S.



EXTENDED VIEW DOWN W CEDAR STREET:  
FROM CHESTNUT STREET

**P2** EXISTING PHOTO  
N.T.S.

BHAC CERTIFICATE OF APPROPRIATENESS

PHOTOS - EXISTING CONDITIONS

THOMAS RESIDENCE  
7 WEST CEDAR STREET, BOSTON, MA 02108

JOSEPH KENNARD ARCHITECTS, INC

141 DORCHESTER AVE R204 BOSTON MA 02127  
617 292 8989  
www.jkennard.com

DRAWING

H2.6

OCT 5, 2016





VIEW FROM PUBLIC WAY:  
W. CEDAR STREET

**P3** EXISITING PHOTO  
N.T.S.



VIEW FROM PUBLIC WAY:  
W. CEDAR STREET AT ACORN STREET

**P4** EXISTING PHOTO  
N.T.S.



VIEW FROM PUBLIC WAY:  
UP ACORN STREET FROM W. CEDAR ST.

**P5** EXISTING PHOTO  
N.T.S.

BHAC CERTIFICATE OF APPROPRIATENESS

PHOTOS - EXISTING CONDITIONS

**THOMAS RESIDENCE**  
7 WEST CEDAR STREET, BOSTON, MA 02108

**JOSEPH KENNARD ARCHITECTS, INC**

141 DORCHESTER AVE R204 BOSTON MA 02127  
617 292 8989  
www.jkennard.com

DRAWING

**H2.7**

OCT 5, 2016



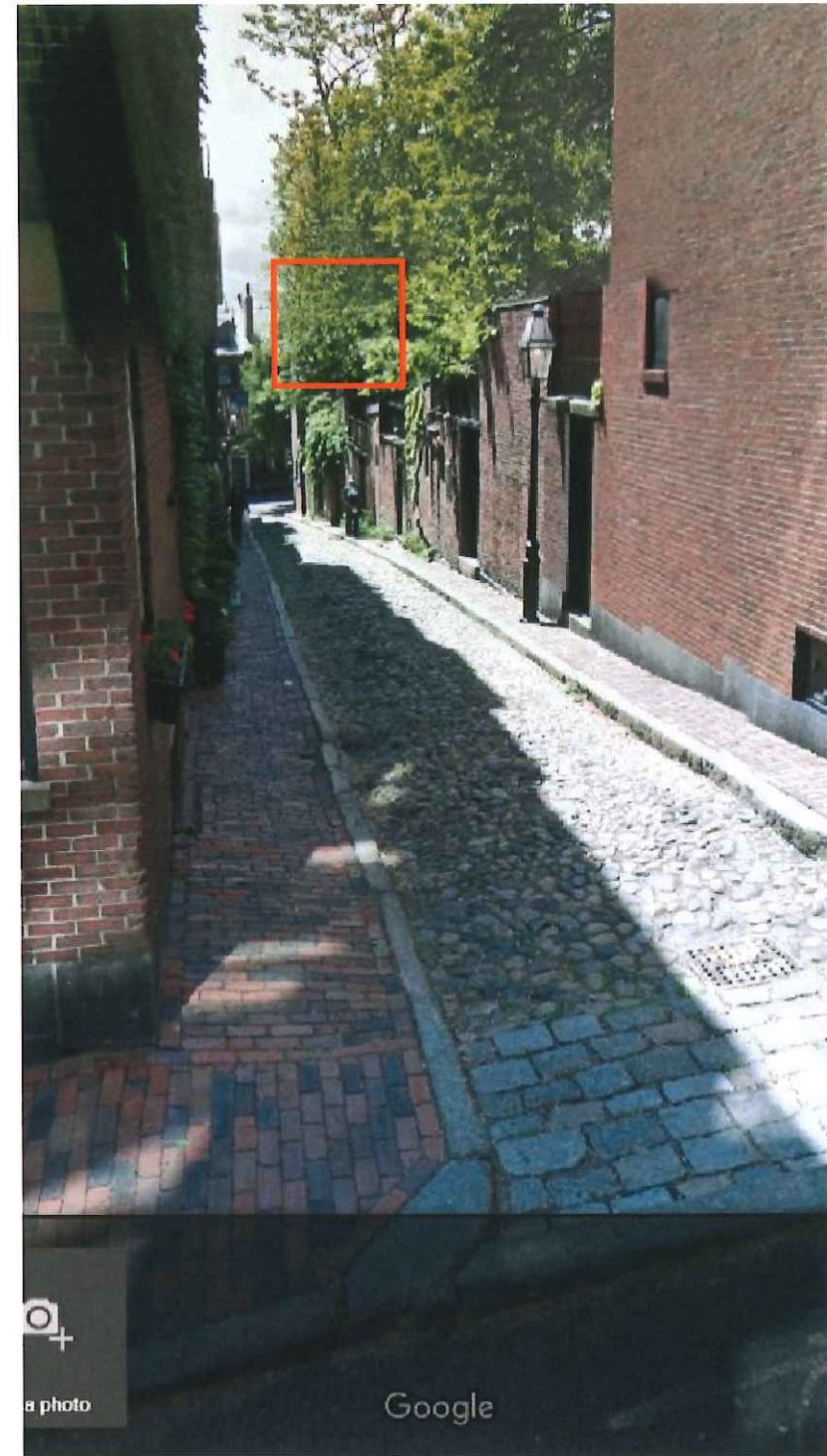


**XTG** METAL COPING - ACORN ST  
N.T.S.



DAMAGE AT NON-HISTORIC, C.1990'S  
ACORN STREET DOOR

**XTG** DAMAGED DOOR - ACORN ST  
N.T.S.



VIEW FROM PUBLIC WAY:  
PHOTO FROM WILLOW STREET

**P6** EXISTING PHOTO  
N.T.S.

BHAC CERTIFICATE OF APPROPRIATENESS

PHOTOS - EXISTING CONDITIONS

**THOMAS RESIDENCE**  
7 WEST CEDAR STREET, BOSTON, MA 02108

DRAWING

**H2.8**

OCT 5, 2016

**JOSEPH KENNARD ARCHITECTS, INC**

141 DORCHESTER AVE R204 BOSTON MA 02127  
617 292 8989  
www.jkennard.com



SIDE DOOR TO 7 WEST CEDAR STREET



P7 XTG DOOR - 11 ACORN



P8 XTG DOOR - 100 ACORN  
2 PANEL



P9 XTG DOOR - 98 ACORN  
PLANK



P10 XTG DOOR - 14 ACORN  
MIXED



P11 XTG DOOR - 15 ACORN  
PLANK



P12 XTG DOOR - 16 ACORN  
PLANK



P13 XTG DOOR - 18 ACORN  
FLUSH



P14 XTG DOOR - 20 ACORN  
FLUSH

EXISTING DOORS ON ACORN STREET-NORTH SIDE (IN ORDER FROM W CEDAR STREET TO WILLOW)

BHAC CERTIFICATE OF APPROPRIATENESS

PHOTOS - EXISTING CONDITIONS

THOMAS RESIDENCE  
7 WEST CEDAR STREET, BOSTON, MA 02108

JOSEPH KENNARD ARCHITECTS, INC

141 DORCHESTER AVE R204 BOSTON MA 02127  
617 292 8989  
www.jkennard.com

DRAWING

H2.9

OCT 5, 2016





ADJACENT SIDE DOOR - CLOSE UP PLANK



XTG SIDE DOOR - 9 W CEDAR STREET

N.T.S.



FRONT ENTRY -  
7 W CEDAR ST



ADJACENT SIDE DOOR -  
9 W CEDAR ST

EXISTING PHOTO - 9-7 W CEDAR ST

N.T.S.

BHAC CERTIFICATE OF APPROPRIATENESS

PHOTOS - EXISTING CONDITIONS

THOMAS RESIDENCE

7 WEST CEDAR STREET, BOSTON, MA 02108

JOSEPH KENNARD ARCHITECTS, INC

141 DORCHESTER AVE R204 BOSTON MA 02127  
617 292 8989  
www.jkennard.com

DRAWING

H2.10

OCT 5, 2016





59 CHESTNUT STREET

SECURITY PANEL -  
SIMILAR APPLICATION  
ON BEACON HILL

4  
N.T.S.



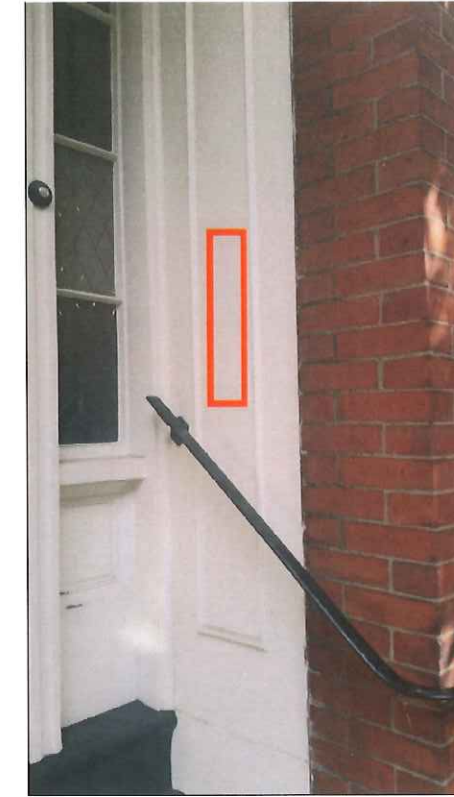
8 WALNUT STREET

SECURITY PANEL -  
SIMILAR APPLICATION  
ON BEACON HILL

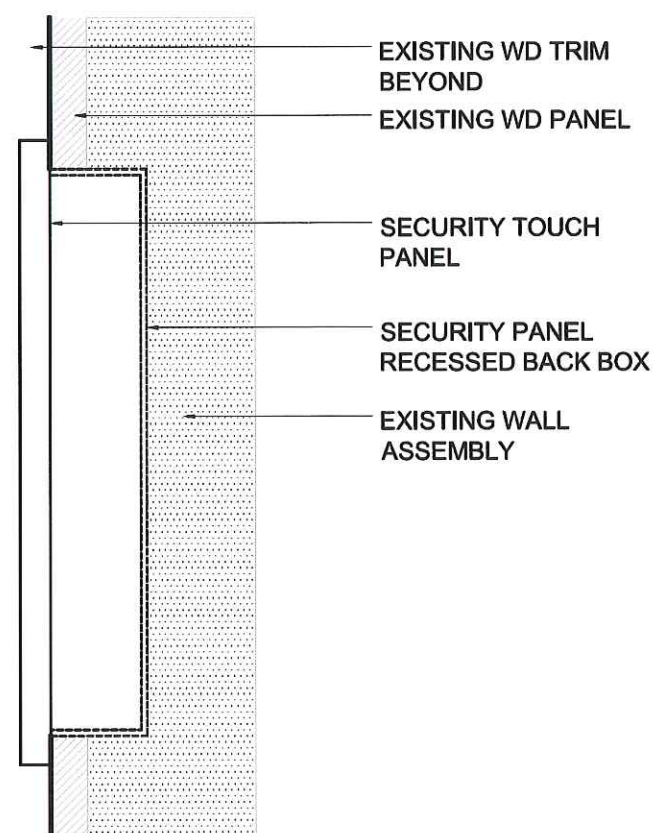
3  
N.T.S.



2 EXISTING - 7 WEST CEDAR STREET  
N.T.S.



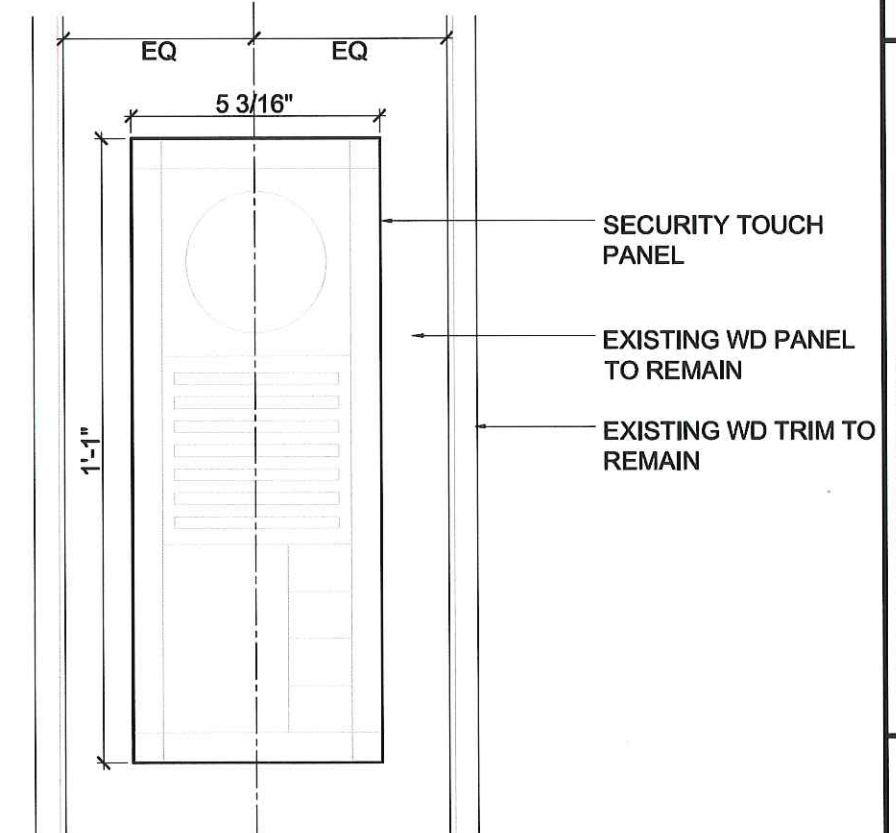
PROPOSED SECURITY  
PANEL LOCATION



SECTION

1 SECURITY PANEL AT FRONT ENTRY - PROPOSED

3" = 1'-0"



ELEVATION

BHAC CERTIFICATE OF APPROPRIATENESS

DETAILS - SECURITY PANEL AT ENTRY

THOMAS RESIDENCE

7 WEST CEDAR STREET, BOSTON, MA 02108

JOSEPH KENNARD ARCHITECTS, INC

141 DORCHESTER AVE R204 BOSTON MA 02127

617 292 8989

www.jkennard.com

DRAWING

H2.11

OCT 5, 2016






**7 W CEDAR ST - FIRE DEPT CONNECTION**  
 N.T.S.




**XTG FIRE DEPT CONNECTION -**  
**46 W CEDAR ST**  
 N.T.S.

DRAWING

**H2.12**

OCT 5, 2016

BHAC CERTIFICATE OF APPROPRIATENESS

**PHOTOS - EXISTING CONDITIONS**

**THOMAS RESIDENCE**

7 WEST CEDAR STREET, BOSTON, MA 02108

**JOSEPH KENNARD ARCHITECTS, INC**

141 DORCHESTER AVE R204 BOSTON MA 02127

617 292 8989

www.jkennard.com



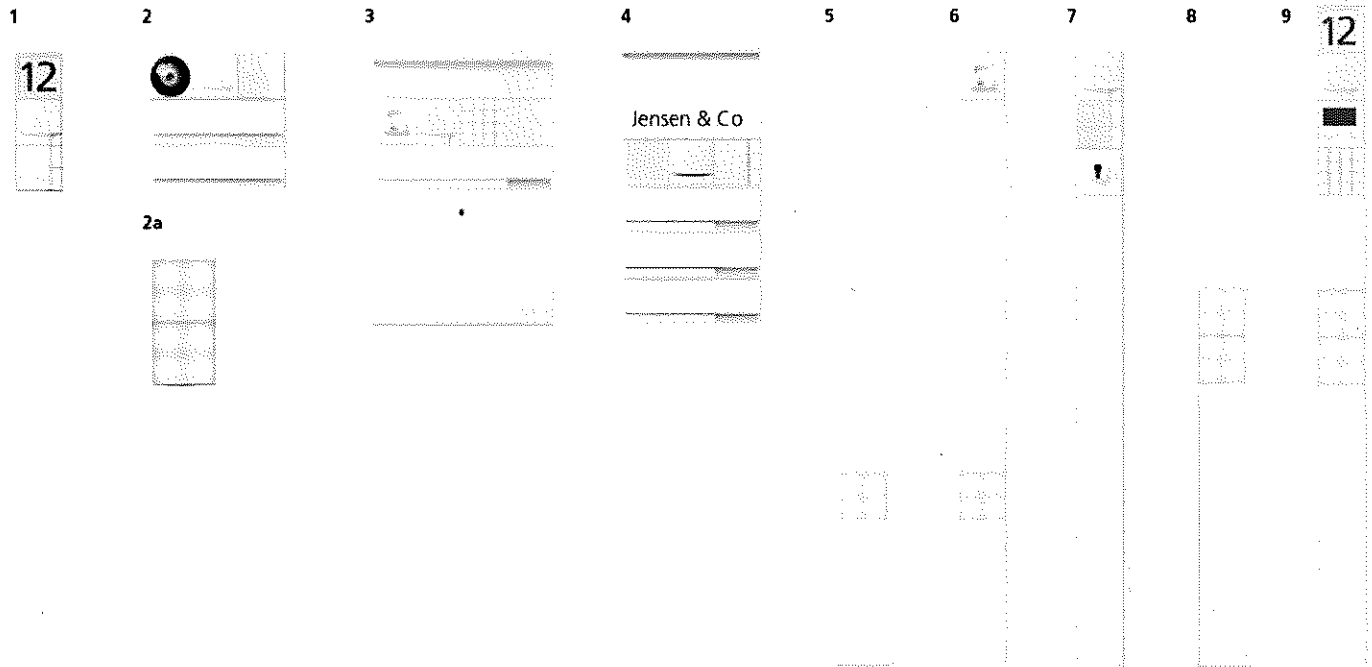




## System examples

From the door bell to the switching and control centre, modern building communication has a lot to offer. Visitor information and guidance, receiving mail, lighting, security, access control and image projection: The requirements are many and varied. Siedle's solution is a simple one: The modular principle. Siedle Vario is unmatched in its flexibility. As an open-ended, modular system, it fits in with the building owner's requirements, the design specifications of the architect as well as building constraints. The Vario system design ensures that any combination of functional modules complies with the

most stringent standards of both form and function. Top-quality materials such as aluminium or weather and UV-resistant polycarbonate guarantee reliable performance over a long service life. The same high standards apply to the planning and processing stage. Thanks to pre-installation, mounting aids and installation compartments, Siedle Vario is quickly and economically planned and installed.



### 1 The door intercom system

Call button, loudspeaker and info module indicating the house number – the classical intercom system forms the basis for all door communication. Sophisticated audio and voice quality, high-grade engineering and timeless design ensure satisfaction in the long term. Whether flush-mounted or as a surface-mounted retrofit unit, the minimal housing height is another unmistakable characteristic of Siedle Vario.

From page 52

### 2 The pass-through letterbox

A tasteful calling card which puts an end to the motley collection of boxes next to the front door. We advise you to recommend your customers to select a door station, letterbox, info sign and lighting system from a single, competent source. The generous pass-through letterbox offers convenient rear removal of mail items and the function modules such as movement sensor, electronic key etc. make for greater convenience and security.

From page 90

### 2a The LED light module

Energy-saving, durable, extremely low profile: Four white LEDs behind acrylic glass, for mounting in-row horizontally or vertically without any visible web.

From page 46

### 3 The letterbox with removal from the front

Whether for reasons of lack of space or personal preference – Siedle Vario together with the letterbox for removal from the front team up to create an impressive reception. Whether surface or flush-mounted – the generous letterbox is capable of accommodating even bulky mail items, and together with the function modules creates a convenient communication centre.

From page 50

### 4 The door panel letterbox

For custom-tailored solutions made from one and the same mould, Siedle Vario is also offered as a version for mounting in existing door elements. Letterboxes, Vario modules and the LED surface area light are individually combined. In this way, door stations are created which blend ideally into the entrance area of a residential or office complex.

### 5, 6, 7, 8, 9 The communication pedestal; free-standing

Flexible from every point of view: The free-standing pedestals are placed where they are required without cutting into the facade. Glass elements or insulated walls remain untouched. If lighting is integrated in the pedestal base, when used in combination with light pedestals an integral design concept results throughout the whole of the entrance area.

From page 70

### 5, 6, 8, 9 The Vario pedestal with LED light module

Stylish lighting for paths, staircases or drives at an optimum height. LED light modules for mounting in communication pedestals or free-standing in the form of light pedestals.

From page 73



## STORZ LARGE DIAMETER FIRE DEPT. CONNECTION

An auxiliary inlet connection to supplement the water supply to a fire protection system.

**STANDARD EQUIPMENT:** Aluminum adapter with storz inlet, female NPT outlet. Cast brass escutcheon plate. Hardcoated aluminum storz cap with attachment cable. Str. or 30 Degree units available. **OPTIONAL:** Storz with screen.

**BRANDING:** "Standpipe", "Auto Spkr", "Standpipe-Sprinkler" and "Dry Standpipe"

**FINISH:** Aluminum with Brass Plate

**OPTIONAL FINISH:** Chrome Plated



Figure No. 6350-6365



Figure No. 6360-6365

Figure No.	Body Style	Size
6350	30 Degree	4 x 4
6352	30 Degree	4 x 5
6353	30 Degree	6 x 4
6354	30 Degree	6 x 5
6355	30 Degree	6 x 6
6360	Str.	4 x 4
6361	Str.	5 x 5
6362	Str.	4 x 5
6363	Str.	6 x 4
6364	Str.	6 x 5
6365	Str.	6 x 6

## STORZ FREESTANDING FIRE DEPT. CONNECTION

**STANDARD EQUIPMENT:** K-Brite aluminum 90 Degree adapter with 90 Degree Storz inlet, female NPT outlet. Polished Chrome sleeve, plate and cap with cable attachment. **OPTIONAL:** Storz with screen.

**BRANDING:** "Standpipe", "Auto Spkr.", "Standpipe-Sprinkler" and "Dry Standpipe"

**FINISH:** K-Brite aluminum adapter and cap with plated chrome sleeve and plate.



Figure No. 6368-6371

Figure No.	Size
6368	FNPT4 x 4STORZ
6369	FNPT4 x 5STORZ
6370	FNPT6 x 4STORZ
6371	FNPT6 x 5STORZ