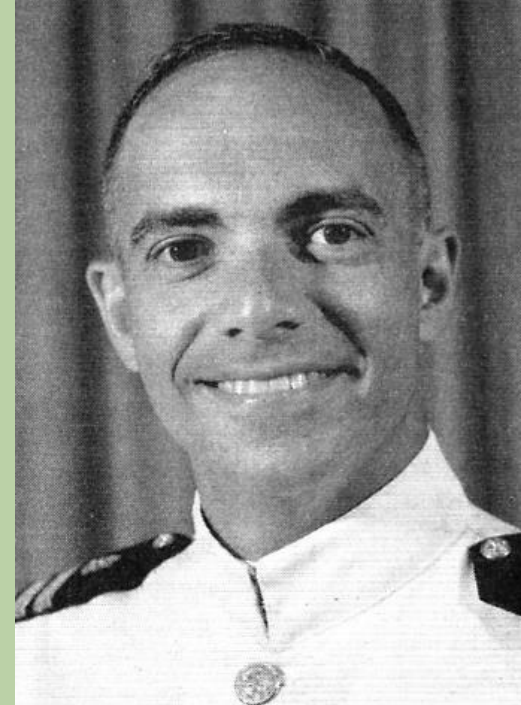




LEDERMAN MEMORIAL AND SITE DESIGN AT LEDERMAN PARK



Dr. Melvin Lederman

dcr
Massachusetts



Boston Landmarks Commission October 2016



Site Design Team
Artist

The Cecil Group | Jacobs | PAL
David Phillips

CONTENTS

Description

Design Concept

Location and Site

Site Views

Memorial Site Plan

Memorial

Inscription

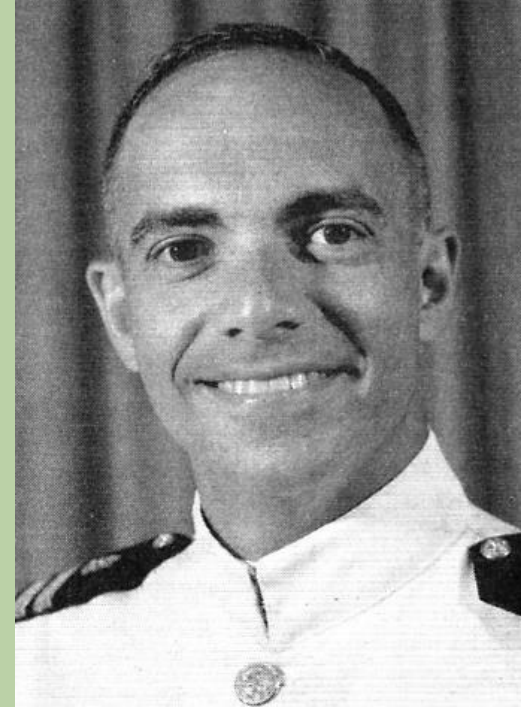
Memorial Components

Landscape

Landscape Materials

Layout

Cost Estimate



Dr. Melvin Lederman

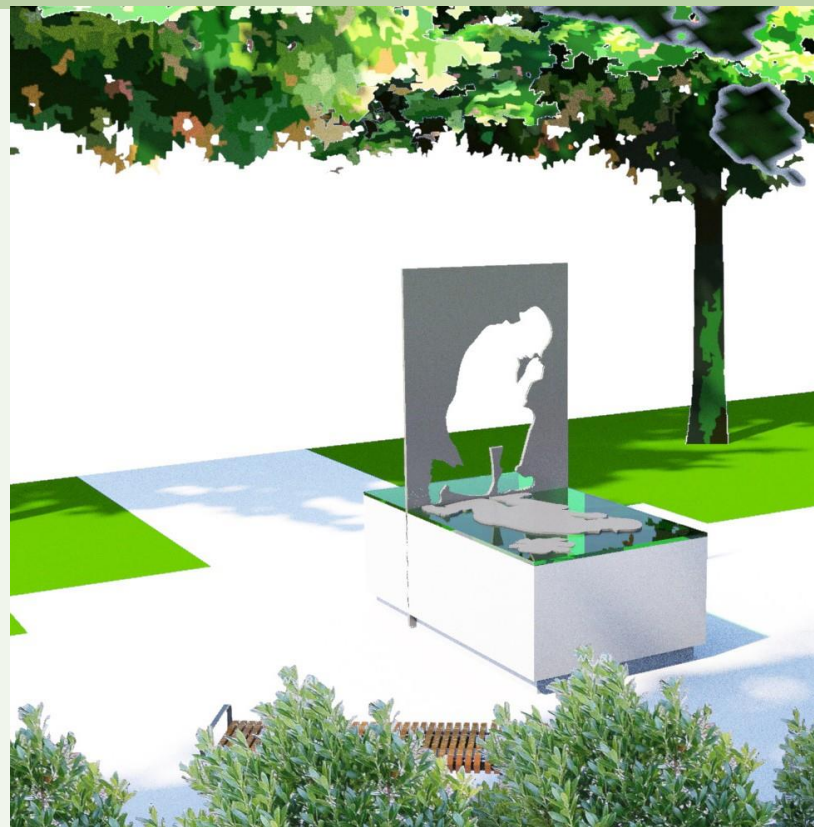


DESCRIPTION



- A permanent memorial and landscaped setting to commemorate Dr. Melvin Lederman and his life
- Sited within Boston's Charles River Esplanade, in a park that was named in his honor.
- An outstanding surgeon and Commander in the Naval Medical Corps
- Served heroically during the Vietnam War
- Volunteer for service in the conflict and to bring his skills into combat, where he was killed while participating in field rescue operations.

Dr. Lederman's exceptional character inspired the admiration of those he served and the dedication of his medical colleagues, friends and family who remember him.



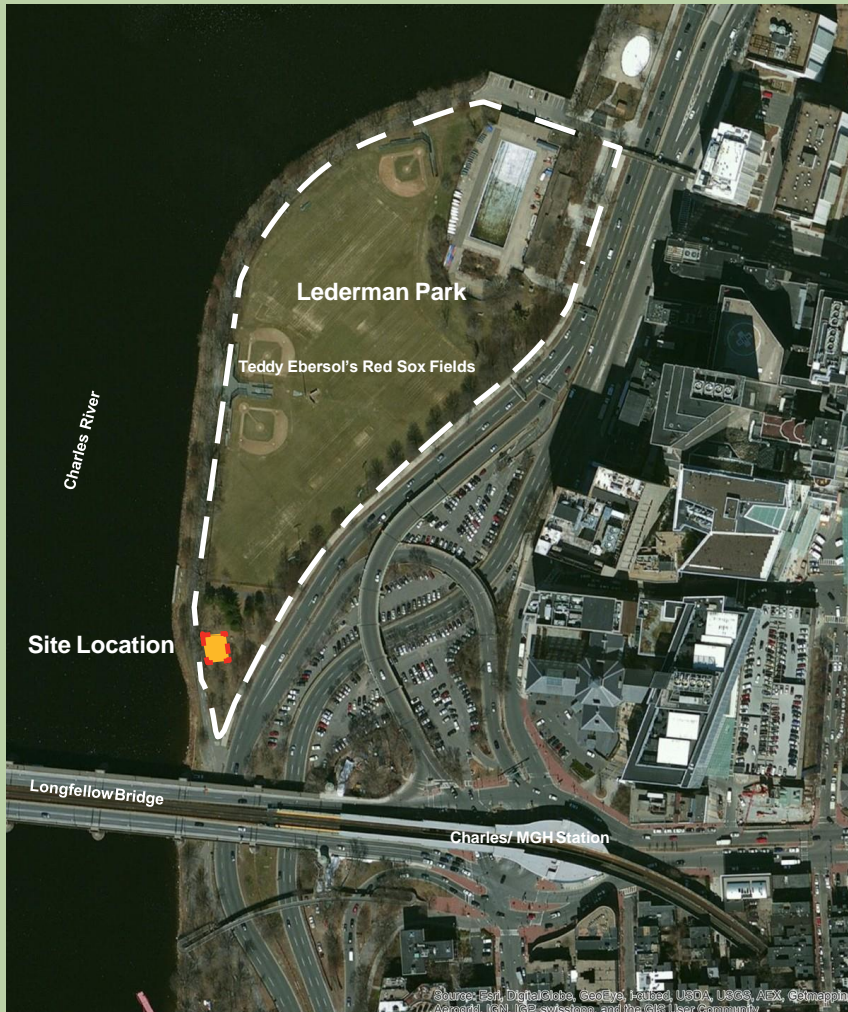
DESIGN CONCEPT



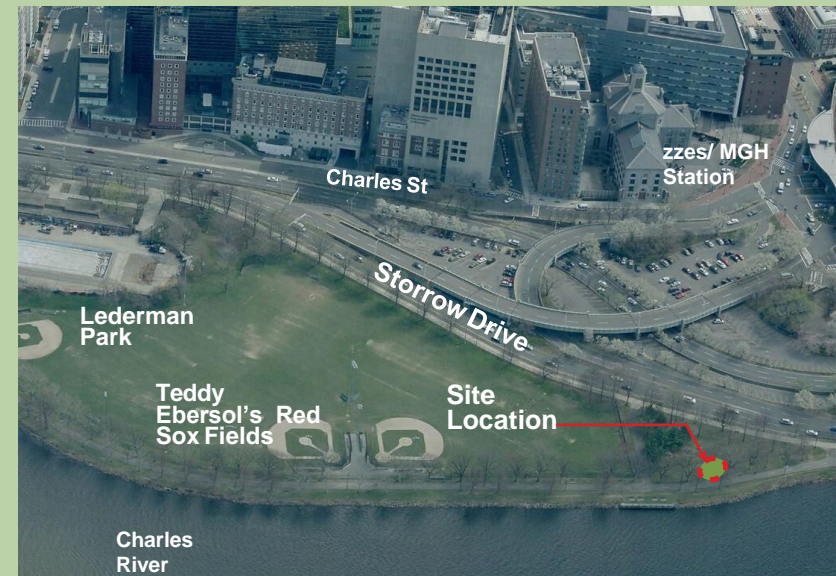
- A sculptural monument in keeping with the simplicity and clarity of other monuments along the Charles River Esplanade
- A profile in silhouette, symbolizing a kneeling medical officer in field dress who has been lost in war, cut from a sheet of solid, brushed stainless steel
- A granite base with the inscriptions located along its sides and horizontal surface
- The cut-out figure of the officer, laid down onto the horizontal surface of the base, symbolizing the shadow of the fallen
- A horizontal surface will contain etched images associated with Dr. Lederman and his service, and a field surgeon's medical kit from the Vietnam era - with its implements - reproduced as a stainless steel casting
- A comfortable, quiet stopping point within the park, oriented towards the spectacular views of the Charles, the Longfellow Bridge, and the Cambridge riverfront.



LOCATION AND SITE



View of the site from the North



Site Context: View from West

LEDERMAN MEMORIAL and SITE DESIGN
at LEDERMAN PARK ON THE ESPLANADE



The Cecil Group/Harriman | Jacobs | PAL
David Phillips, Artist



SITE VIEWS



LEDERMAN MEMORIAL and SITE DESIGN
at LEDERMAN PARK ON THE ESPLANADE



The Cecil Group/Harriman | Jacobs | PAL
David Phillips, Artist



MEMORIAL SITE PLAN

The memorial will be composed of a small paved area adjacent to the existing pathway along the Charles River. A walk will connect the pathway to the memorial, centered between two existing oak trees. The site plan orients the seating area towards the monument and the River panorama beyond, and is backed by low berming and plantings to distinguish it from the surrounding lawn areas. The site is below the canopies of the two existing trees, which will frame the view looking towards the Charles River.

The relocated memorial stone will serve as a marker identifying Lederman Field and will have a landscape setting at the southern end of Park, near the Longfellow Bridge. Several trees that are in poor condition or that provide excessive shade of the lawn will be removed, creating a better balance of open areas and tree cover.



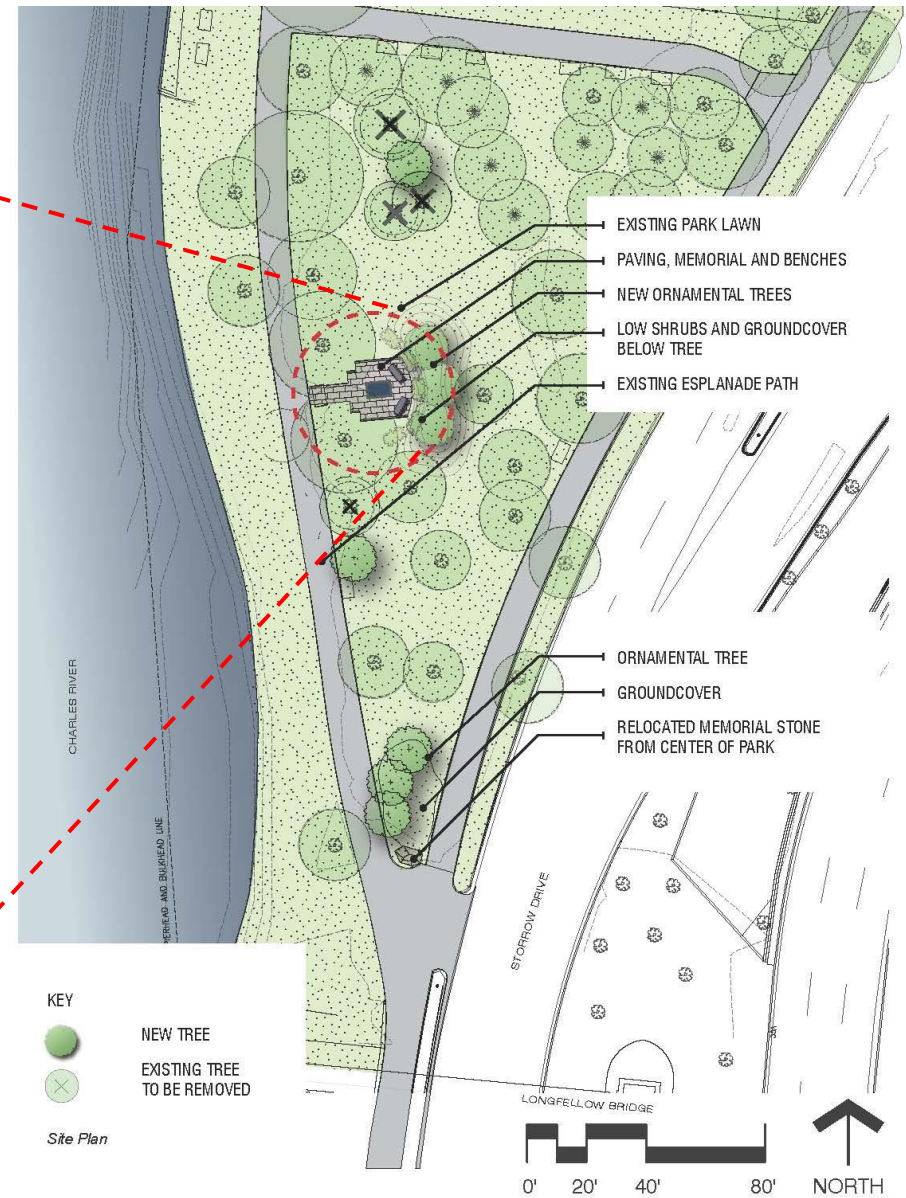
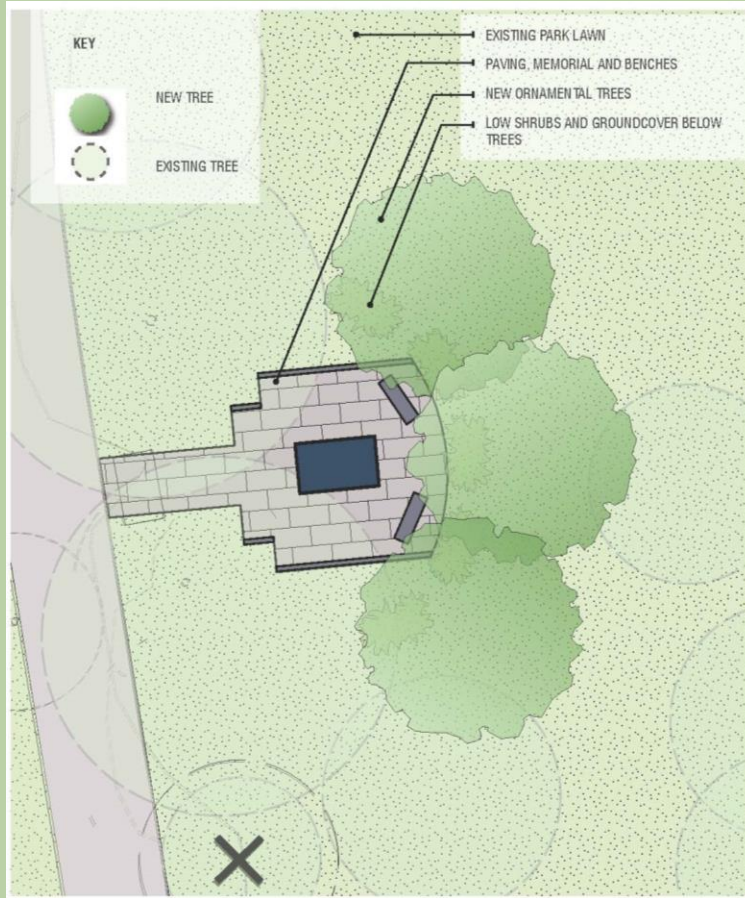
LEDERMAN MEMORIAL and SITE DESIGN
at LEDERMAN PARK ON THE ESPLANADE



The Cecil Group/Harriman | Jacobs | PAL
David Phillips, Artist



MEMORIAL SITE PLAN



LEDERMAN MEMORIAL and SITE DESIGN
at LEDERMAN PARK ON THE ESPLANADE



The Cecil Group/Harriman | Jacobs | PAL
David Phillips, Artist



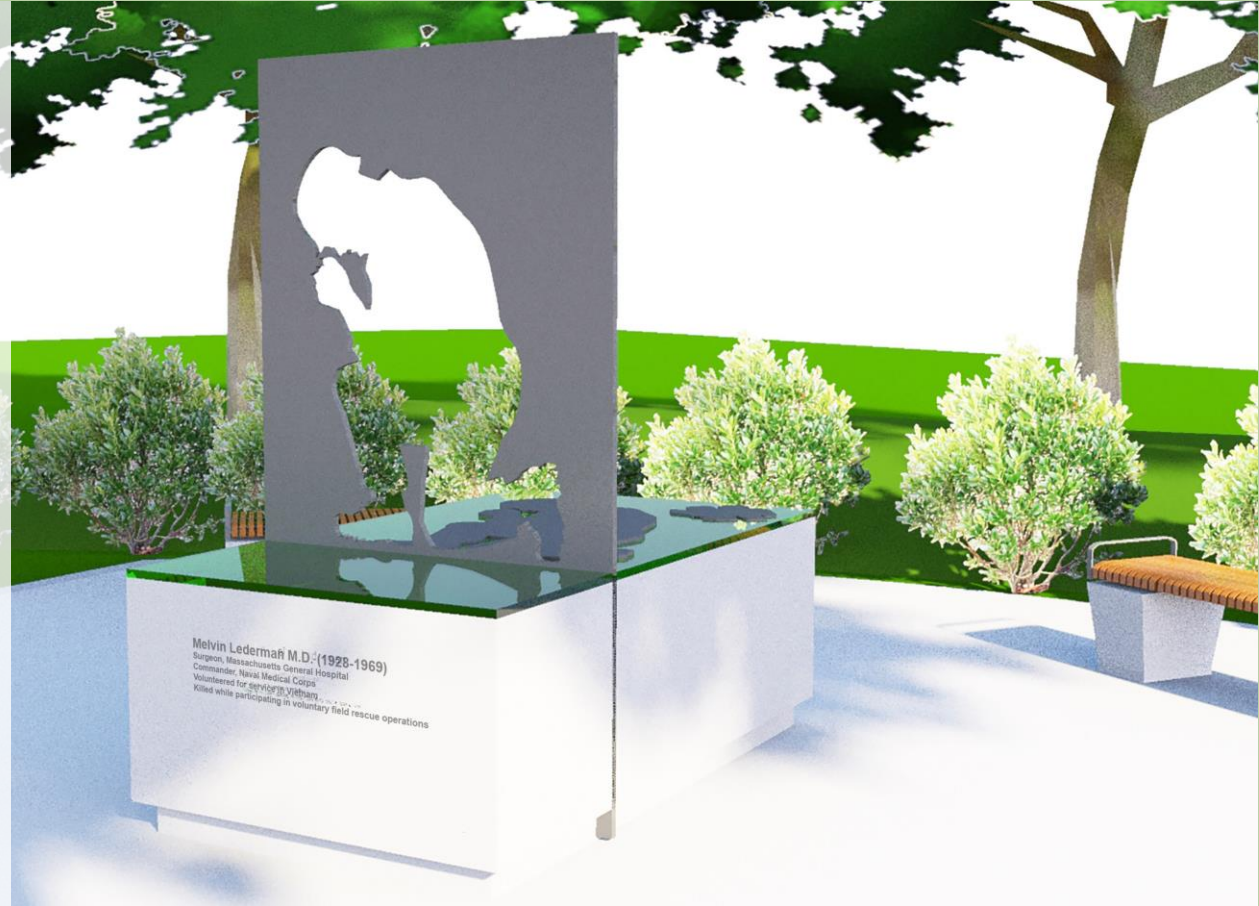
MEMORIAL

Dr. Lederman was an exceptional surgeon and medical officer who became a Commander in the U.S. Navy Medical Corps.

He volunteered for service in Vietnam and served aboard the hospital ship USS Repose, attending to wounded Marines including those brought to the ship by Med-Evac helicopters.

He decided that his services were needed closer to combat to provide earlier intervention. He voluntarily accompanied helicopter crews into the combat theaters, exposing himself to risk. He became known as “Super Doc” by his compatriots. He received three Purple Hearts for the multiple wounds he received during his actions.

Two days before his scheduled discharge, he was killed when the helicopter in which he was riding was shot down by enemy fire.



Melvin Lederman M.D. (1928-1969)
Surgeon, Massachusetts General Hospital
Commander, Naval Medical Corps
Volunteered for service in Vietnam
Killed while participating in voluntary field rescue operations

LEDERMAN MEMORIAL and SITE DESIGN
at LEDERMAN PARK ON THE ESPLANADE



The Cecil Group/Harriman | Jacobs | PAL
David Phillips, Artist



INSCRIPTION



Someone had to do the job of taking care of these kids and it is obvious that I am it. So by conscience I have been doing the best that I know how.

- Letter from Dr. Melvin Lederman to a friend

Melvin Lederman M.D. (1928-1969)

Surgeon, Massachusetts General Hospital Commander, Naval Medical Corps

Volunteered for service in Vietnam

Killed while participating in voluntary field rescue operations

It is difficult to believe that his work on this earth is done and we shall think always that in some way his light will yet shine.

- Letter to Dr. Lederman's parents from Crawford Bost, M.D.

LEDERMAN MEMORIAL and SITE DESIGN
at LEDERMAN PARK ON THE ESPLANADE



The Cecil Group/Harriman | Jacobs | PAL
David Phillips, Artist



MEMORIAL COMPONENTS

Description

The memorial components consist of the memorial sculpture, two special benches designed in concert with the memorial, and the landscaped setting.

The memorial sculpture will include a light gray granite base. The silhouetted profile will be cut from a solid sheet of brushed stainless steel. The cover will be engraved with images, and the translucent material will allow light to be diffused through those images. Mounted on the translucent sheet will be the brushed stainless profile of the fallen officer and the reproduction, in stainless steel, of the medical kit.

The benches will be composed of the same granite material as the memorial base, durable hardwood seating surfaces, and stainless fittings and armrests.

The landscaping will be composed of a low berm with shrubs and ground cover, and three ornamental trees. The walking surface will be crushed stone; granite has been considered as an alternative.



LEDERMAN MEMORIAL and SITE DESIGN
at LEDERMAN PARK ON THE ESPLANADE



The Cecil Group/Harriman | Jacobs | PAL
David Phillips, Artist

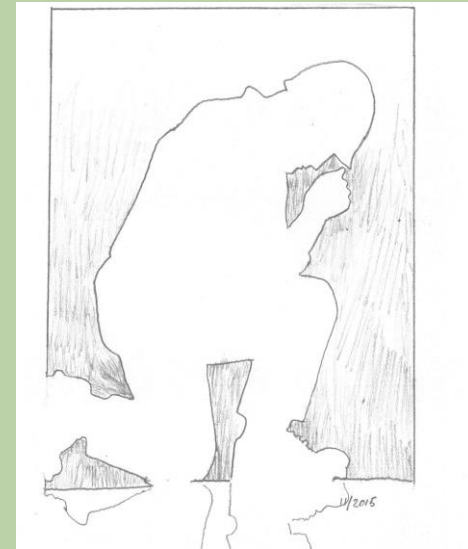


MEMORIAL COMPONENTS

The expressive outline representing a kneeling medical officer will be created with attention to the outline of the helmet and uniform features of the Vietnam-era field equipment that would have been worn by Dr. Lederman. This figure will be posed as though attending to the wounded. The profile will be cut from solid steel using laser technology.



Concept Mockup



Concept Sketch



*Concept Mockup Indicating
Cut Out and Horizontal Profile*

LEDERMAN MEMORIAL and SITE DESIGN
at LEDERMAN PARK ON THE ESPLANADE



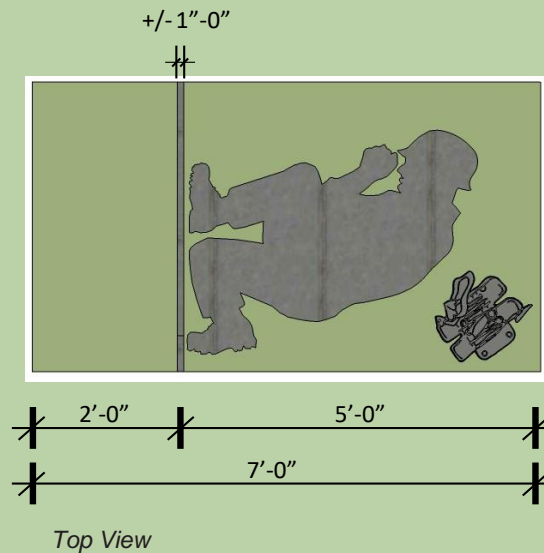
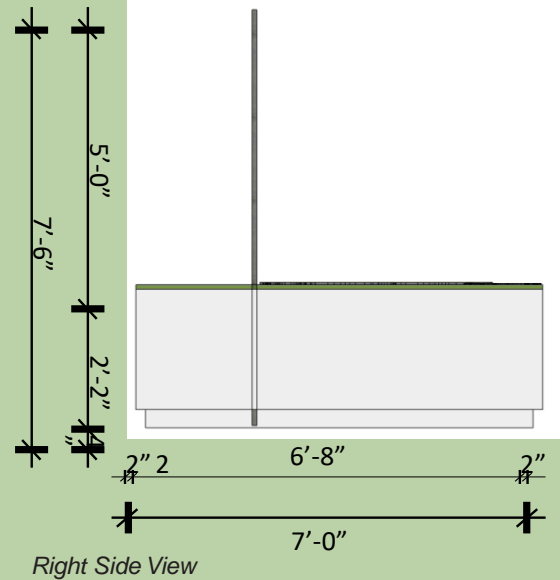
The Cecil Group/Harrima
David Phillips, Artist

Massachusetts



MEMORIAL COMPONENTS

In the design concept, the solid portion of the silhouette cut from the steel sheet will be retained and then "folded down" onto the horizontal surface of the base. The shape mirrors the vertical, cut out profile. A stainless steel casting of a field surgeon's kit will then be placed next to the fallen figure.



MEMORIAL COMPONENTS

The inscription text will be distributed in various locations. The identifying description will be oriented towards the visitors' approach to the monument. Additional inscription text will be located on the granite base or on the other surfaces.



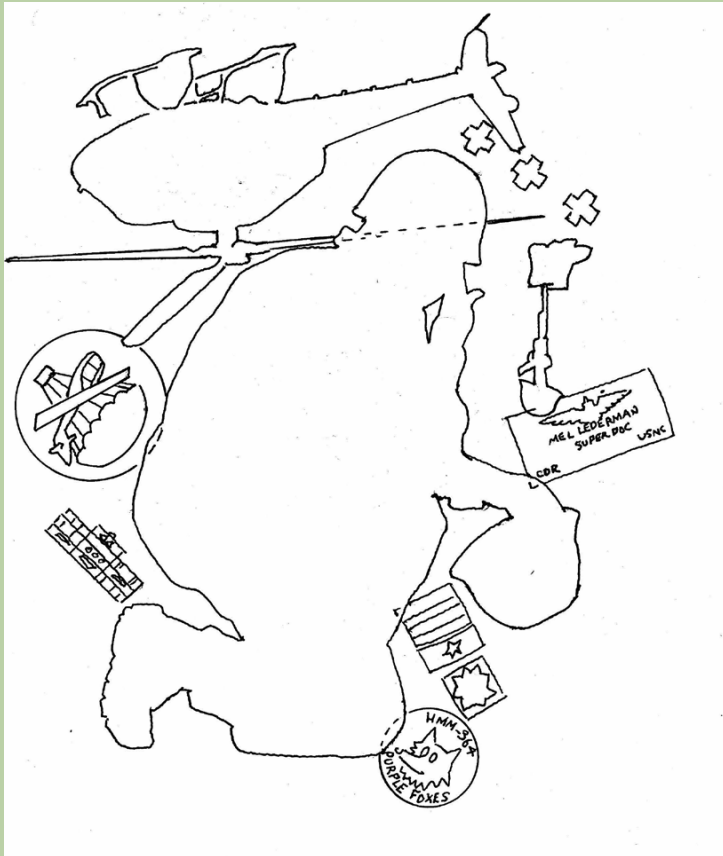
LEDERMAN MEMORIAL and SITE DESIGN
at LEDERMAN PARK ON THE ESPLANADE



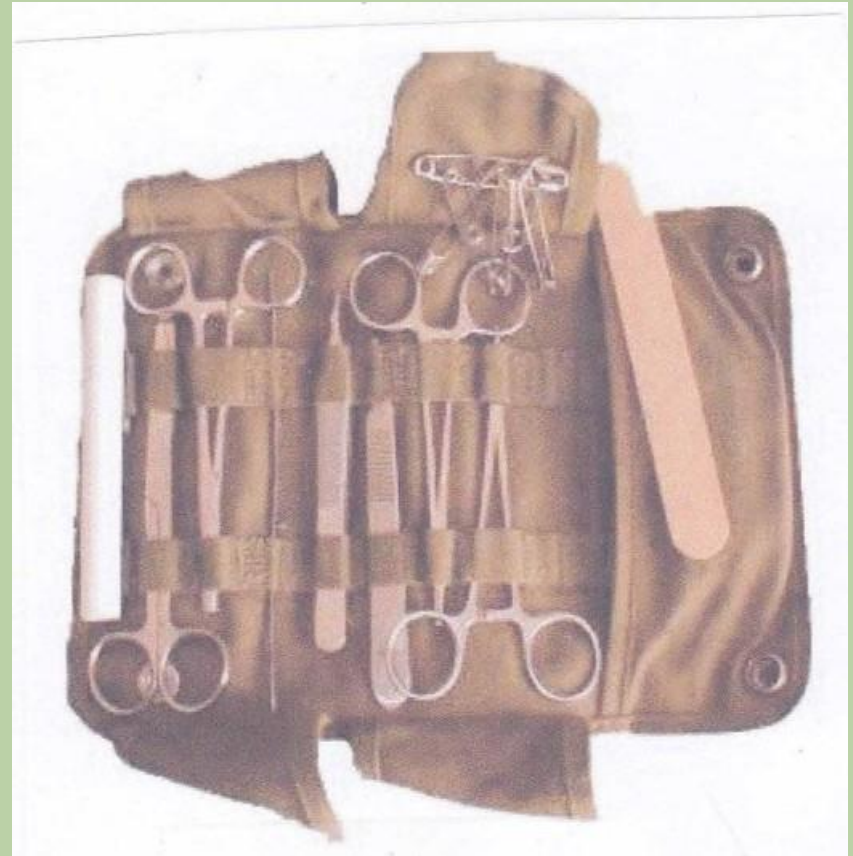
The Cecil Group/Harriman | Jacobs | PAL
David Phillips, Artist



MEMORIAL COMPONENTS



Sketch Idea for Image within the Translucent Surface



Vietnam-era Field Surgeon's Kit

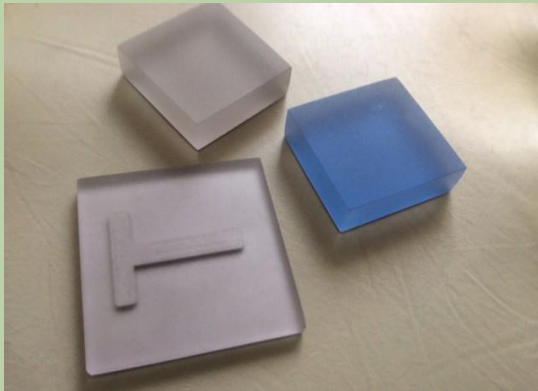
LEDERMAN MEMORIAL and SITE DESIGN
at LEDERMAN PARK ON THE ESPLANADE



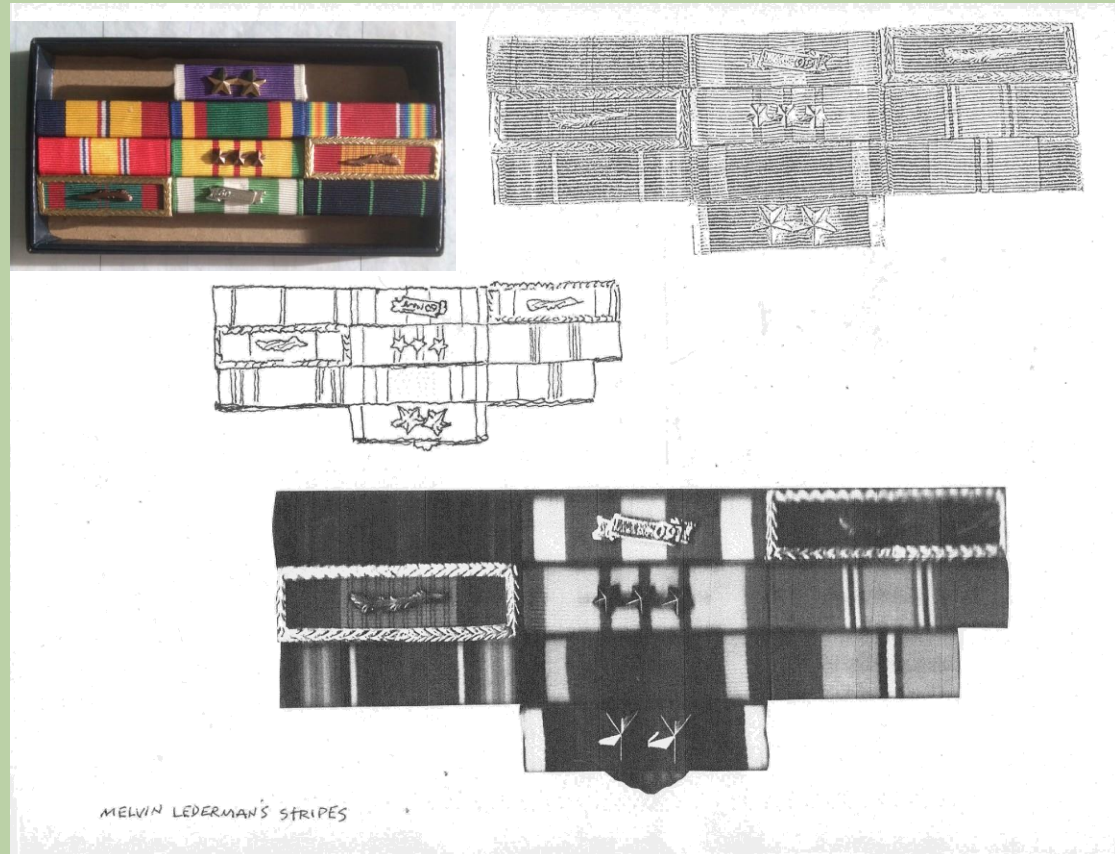
The Cecil Group/Harriman | Jacobs | PAL
David Phillips, Artist



MEMORIAL COMPONENTS



Samples of Translucent Surface Material



LEDERMAN MEMORIAL and SITE DESIGN
at LEDERMAN PARK ON THE ESPLANADE



The Cecil Group/Harriman | Jacobs | PAL
David Phillips, Artist

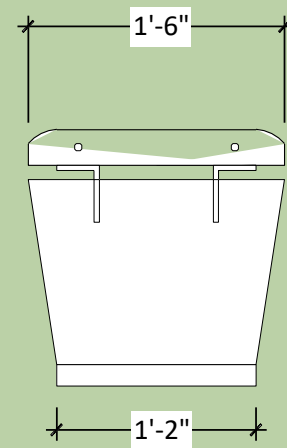
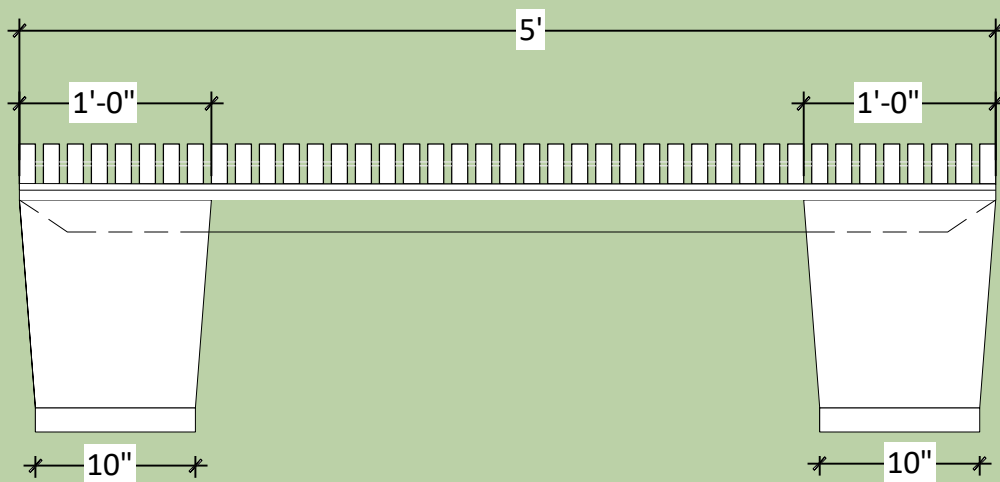


MEMORIAL COMPONENTS

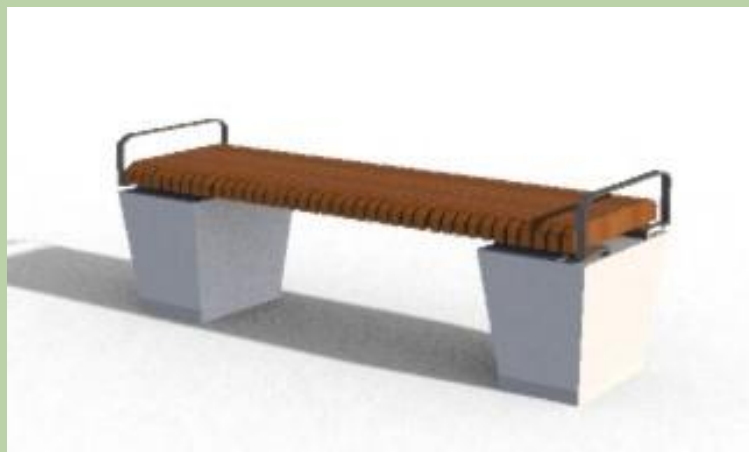
The benches will be composed of three materials and assembled with an aesthetic design that complements the nearby memorial sculptures. Shaped granite bases will support horizontal hardwood members that will form the seats. The thick wooden slats will be assembled using concealed stainless steel hardware. Brushed stainless steel will be used to form armrests at the ends of the benches.



MEMORIAL COMPONENTS



Bench Design



LEDERMAN MEMORIAL and SITE DESIGN
at LEDERMAN PARK ON THE ESPLANADE



The Cecil Group/Harriman | Jacobs | PAL
David Phillips, Artist



LANDSCAPE

The landscape design is intended to create a sense of orientation and distinction from the surrounding lawn. The paving will provide a simple, flat surface surrounding the memorial and extending beneath the benches. A low berm and low plantings will be used to create a simple visual boundary for the memorial, so that it is comfortable as a place to sit. However, the landscape will employ grouped plant materials and spacing so that the memorial area can be readily seen from nearby sidewalks and Storrow drive.



LEDERMAN MEMORIAL and SITE DESIGN
at LEDERMAN PARK ON THE ESPLANADE



The Cecil Group/Harriman | Jacobs | PAL
David Phillips, Artist



LANDSCAPE MATERIALS

The planting materials will be consistent with the Charles River Esplanade master plan and complement the plantings along the improved approaches to the Longfellow Bridge. The three ornamental trees will be of a variety that will be relatively short and low-spreading. These trees, as they mature, will provide secondary canopy below the nearby, tall oak trees that line the Charles River pathway. Shrubs and grasses will be chosen from the adopted palette of materials being used in the adjacent landscape improvements for the Longfellow Bridge.

Recommended plant material include:

Trees –

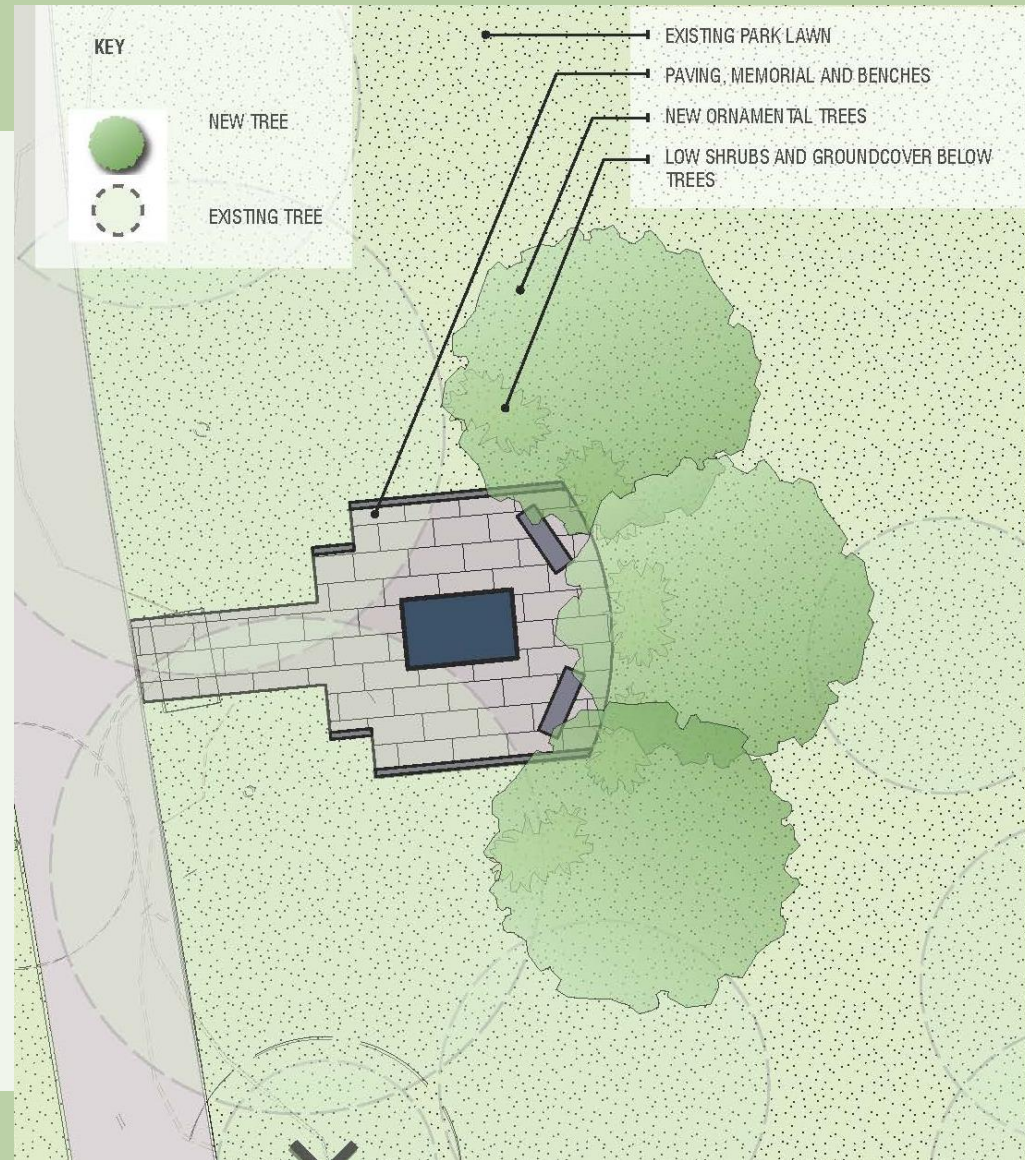
Red Maple (*Acer rubrum* ‘Franksred’)
Snow Cloud Service Berry (*Amelanchier laevis* ‘Snow Cloud’)

Shrubs –

Red Twig Dogwood (*Cornus stolonifera* ‘Farrow’)
Summer Sweet (*Clethra anifolia* ‘Hummingbird’)
Shamrock Inkberry (*Ilex glabra* ‘Shamrock’)
Red Sprite Winterberry (*Ilex verticillata* ‘Red Spite’)

Groundcover –

Lily Turf (*Liriope muscari* ‘Big Blue’)
Red Fescue (*Festuca rubra*)



LAYOUT

The design concept provides for adequate spacing so that visitors can walk entirely around the monument with adequate separation from the benches so that other individuals will be comfortable in the space.



LEDERMAN MEMORIAL and SITE DESIGN
at LEDERMAN PARK ON THE ESPLANADE



The Cecil Group/Harriman | Jacobs | PAL
David Phillips, Artist



COST ESTIMATE

This cost estimate is for the proposed memorial and landscape improvements in the immediate vicinity. It also includes an estimate for the relocation of the existing granite boulder marker and the landscape setting around it.

Component	Unit	Description	Quantity	Unit Price	Estimated Cost
Memorial					
Memorial Sculpture	EA	Sculpture (all components)	1	\$60,000	\$60,000
	EA	Foundation	1	\$3,500	\$3,500
Custom Benches	EA	Benches (all elements)	2	\$5,500	\$11,000
	EA	Foundations	4	\$500	\$2,000
Subtotal					\$76,500
Memorial Landscape Improvements	EA	Tree Protection	4	\$250	\$1,000
	EA	Existing Tree Removal	3	\$1,500	\$4,500
	LS	Existing Bench Removal	1	\$500	\$500
	SF	Granite Pavers on Asphalt	604	\$50	\$30,200
	EA	Ornamental Tree	3	\$1,500	\$4,500
	EA	Ornamental Shrubs	10	\$500	\$5,000
	EA	Ground Cover / Perennials	500	\$10	\$5,000
	CY	Loam Borrow	30	\$60	\$1,800
	SY	Fine Grading and Compacting	100	\$10	\$1,000
	CY	Aged Pine Bark Mulch	10	\$60	\$600
	SF	Lawn Seeding	1,000	\$1	\$1,000
Subtotal					\$55,100
Fieldstone Marker					
Granite Marker	LS	Relocate Existing Granite Marker	1	\$2,000	\$2,000
	Subtotal				
Marker Landscape Improvements	SF	Asphalt Paving Repair	80	\$25	\$2,000
	SF	Granite Pavers on Asphalt	40	\$50	\$2,000
	EA	Ornamental Tree	3	\$1,500	\$4,500
	EA	Ground Cover / Perennials	50	\$10	\$500
	CY	Loam Borrow	4	\$60	\$240
	SY	Fine Grading and Compacting	10	\$10	\$100
	CY	Aged Pine Bark Mulch	3	\$60	\$180
	SF	Lawn Seeding	100	\$2	\$200
Subtotal					\$9,720
Total, Memorial and Fieldstone Marker					\$143,320
Mobilization and General Conditions @10%					\$14,332
Subtotal					\$157,652
Design Contingency @ 10%					\$15,765
Construction Contingency @ 15%					\$23,648
Total Construction Cost					\$197,065
Final Phase Design and Engineering Fees					\$31,025
TOTAL PROJECT COST					\$228,090

LEDERMAN MEMORIAL and SITE DESIGN
at LEDERMAN PARK ON THE ESPLANADE



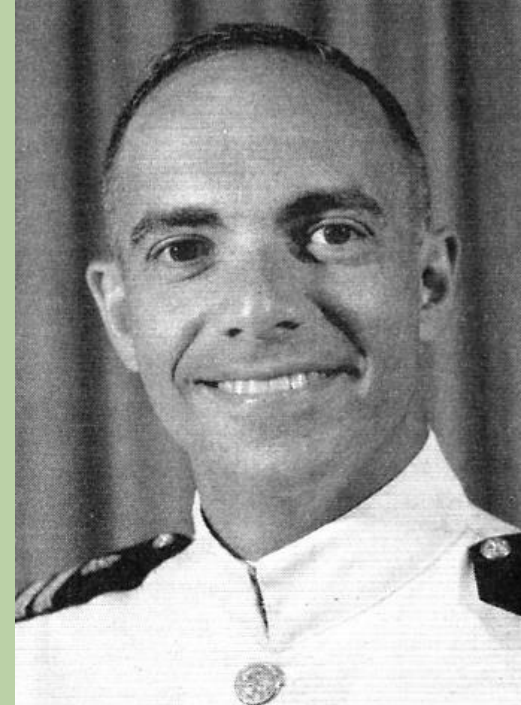
The Cecil Grosvenor/Harriman | Jacobs | PAL
David Phillips, Artist

1. Costs based on design concepts prepared 2/17/2016
2. All itemized costs include materials, fabrication, and installation





LEDERMAN MEMORIAL AND SITE DESIGN AT LEDERMAN PARK



Dr. Melvin Lederman

dcr
Massachusetts



Boston Landmarks Commission October 2016



Site Design Team
Artist

The Cecil Group | Jacobs | PAL
David Phillips