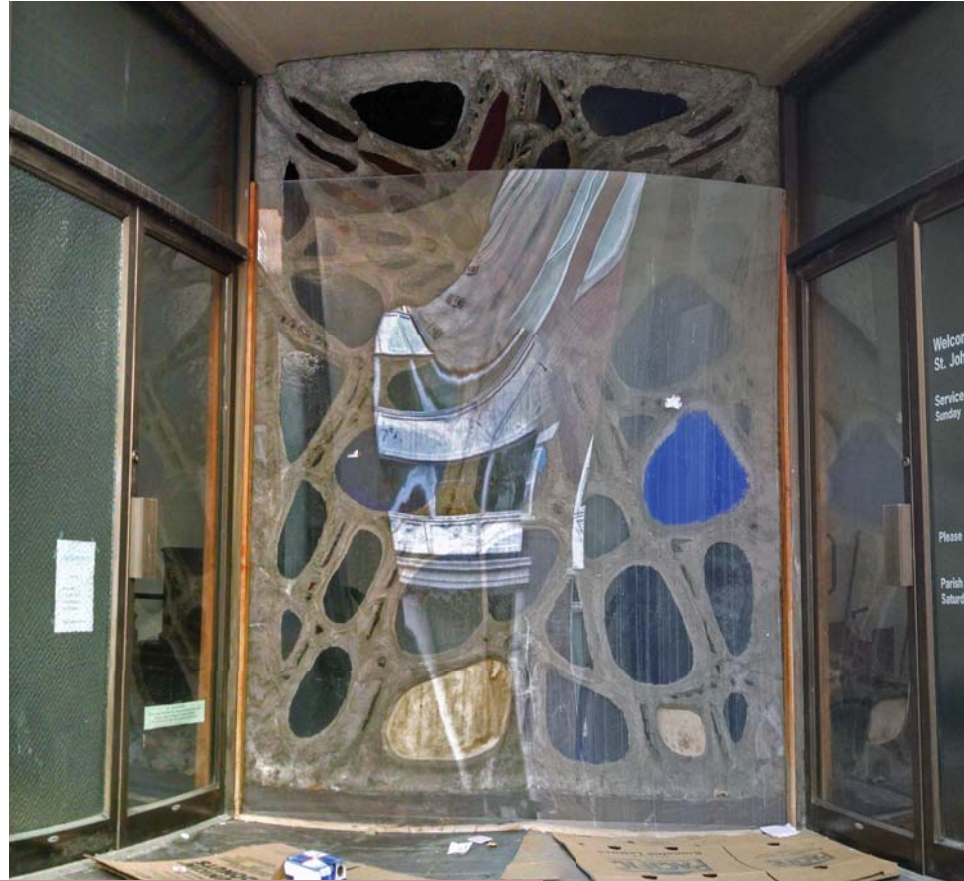


35 Bowdoin Street Entrance

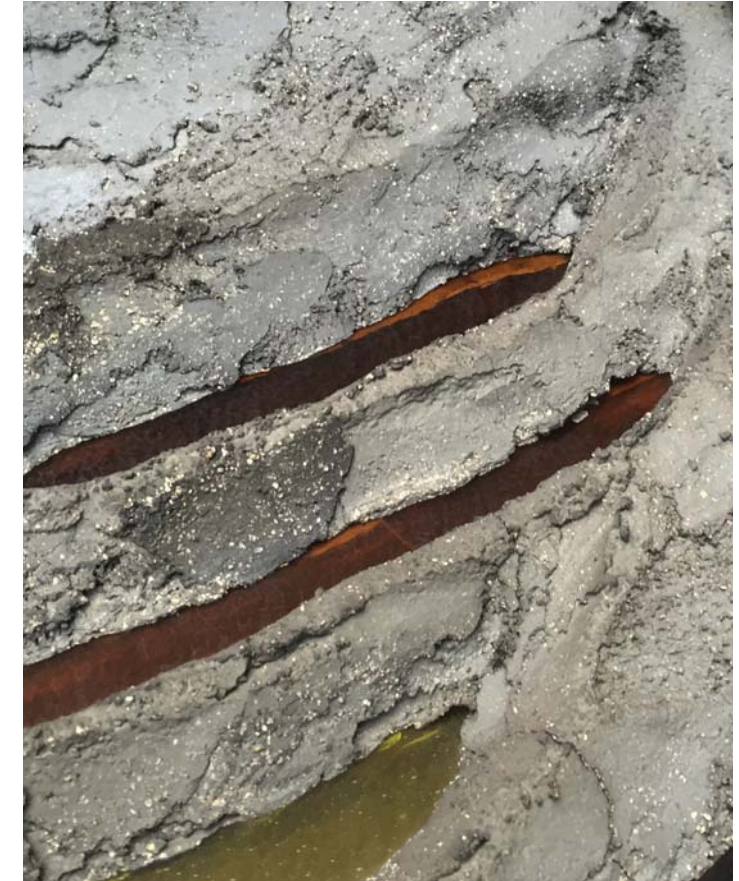


Existing Stained Glass Window

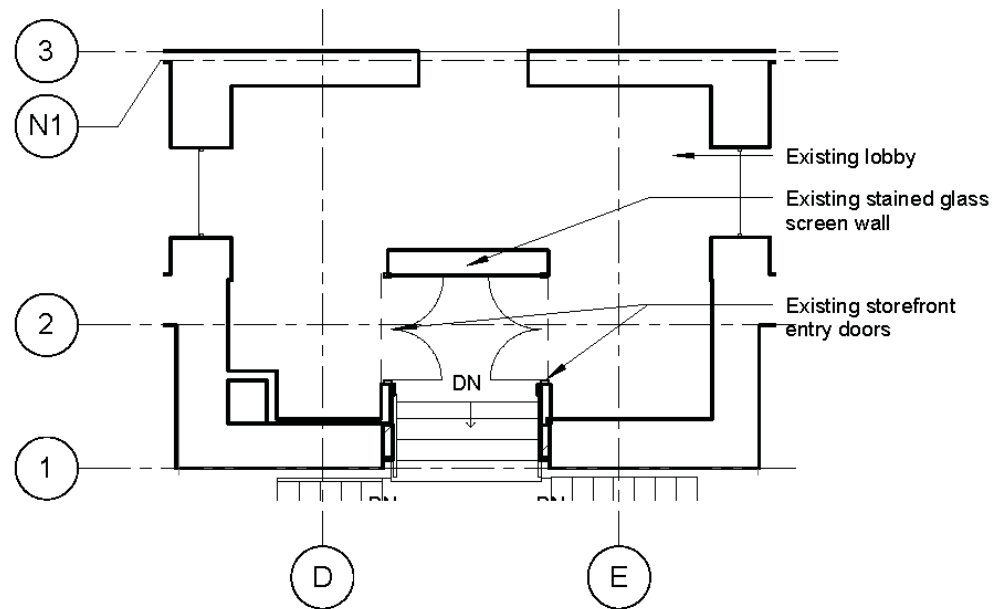
Exterior view with plexiglass protection



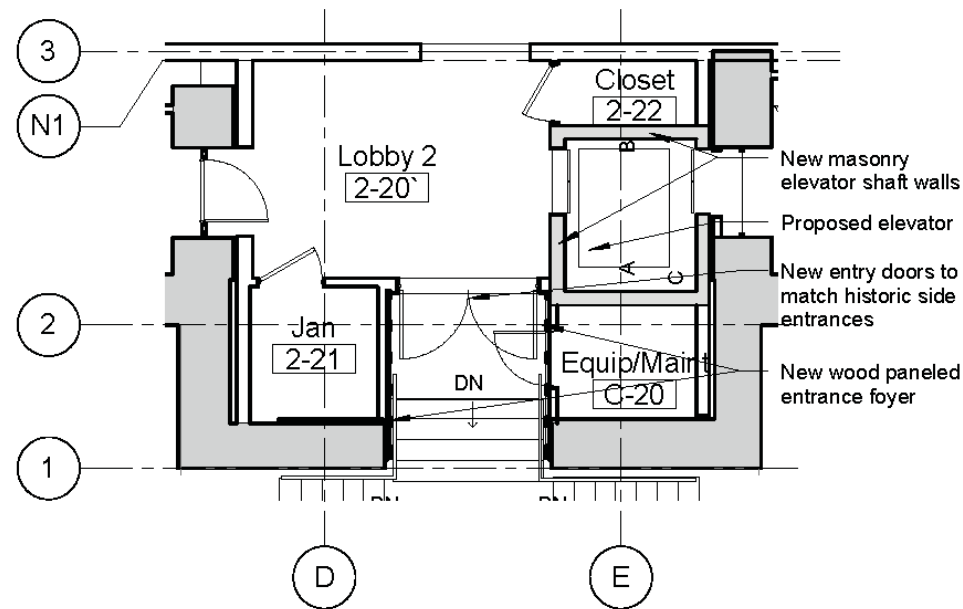
Detail view with exposed reinforcing



Detail view with exposed reinforcing



1 Entry Plan - Existing
1/8" = 1'-0"

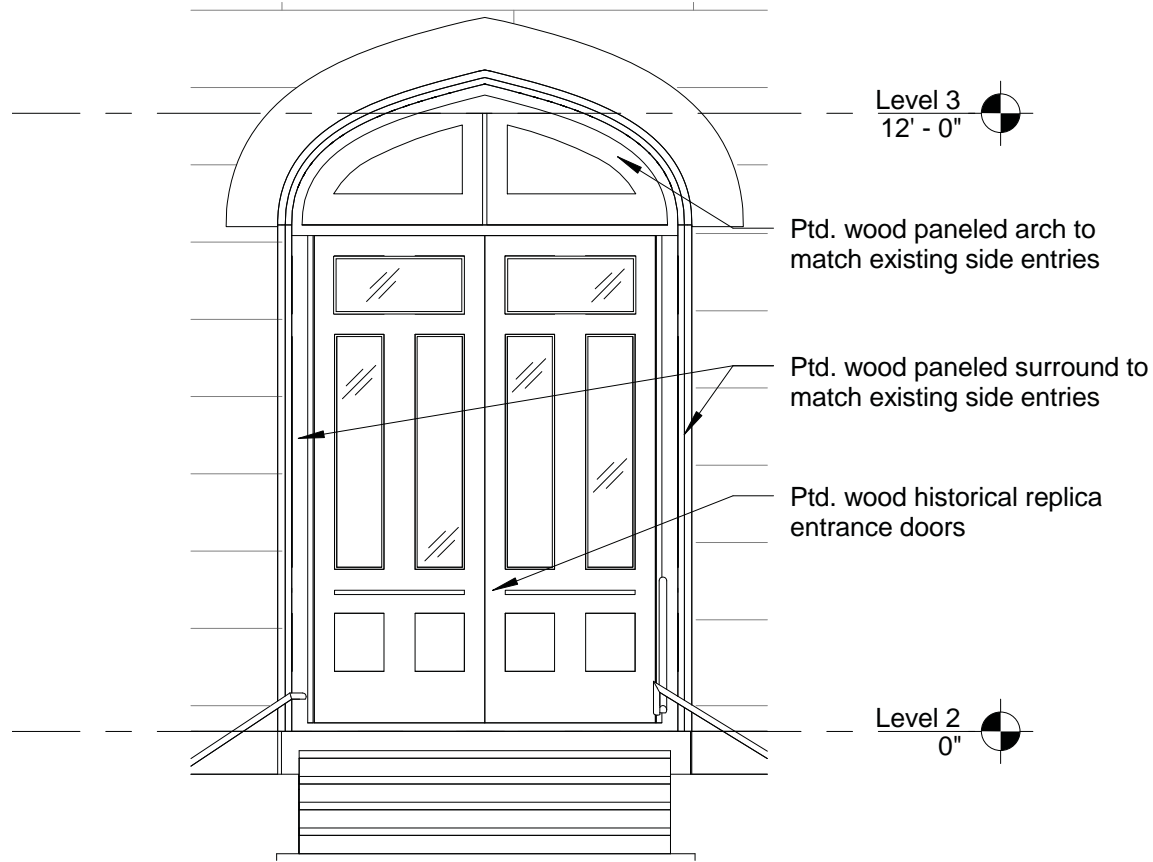


2 Entry Plan - Proposed
1/8" = 1'-0"

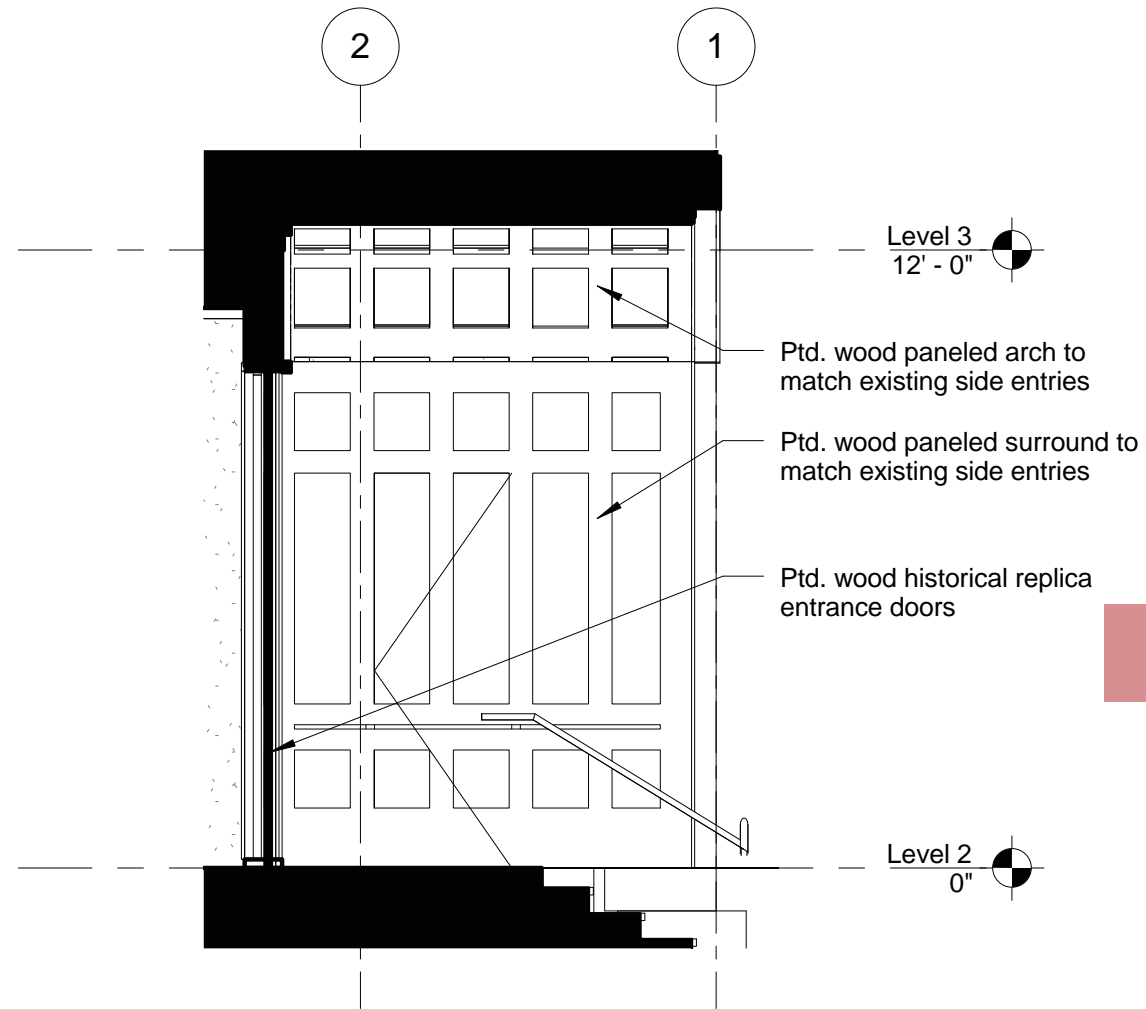
Date installed: 1960
 Designer: György Kepes
 Artist / fabricator: Joseph Ferguson
 Design: St. John's Eagle
 Medium: Blown glass and electric lights set in concrete on an expanded metal grill frame.

Stained Glass Information

35 Bowdoin Street Entrance



6 Proposed Main Entrance Elevation
1/4" = 1'-0"

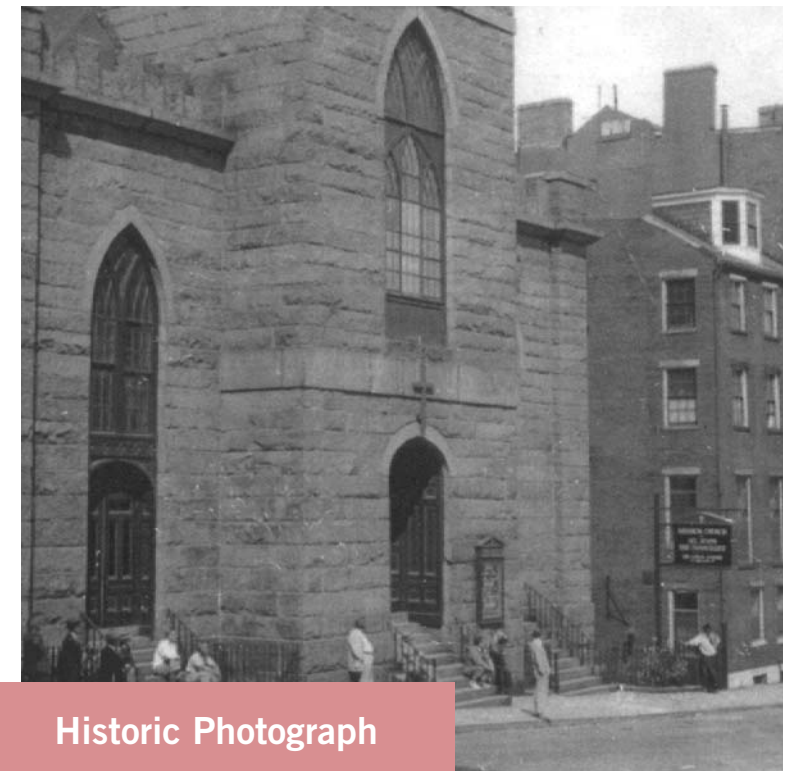


7 Proposed Main Entrance Section
1/4" = 1'-0"



Existing Side Entrance Doors

New main entrance door to replicate side entrance doors



Historic Photograph

Proposed Entrance Drawings

35 Bowdoin Street Entrance



Detail at cracked cement



Detail of metal support frame and exposed wiring



Detail at hole in glass patched with blue painter's tape



Detail at troweled on cement



Detail at exposed metal support frame and cracked glass



Detail at cracked glass