

21 WORMWOOD STREET
TRASH / RECYCLING ROOM ACCESS UPGRADE

THE FORT POINT CHANNEL LANDMARK DISTRICT

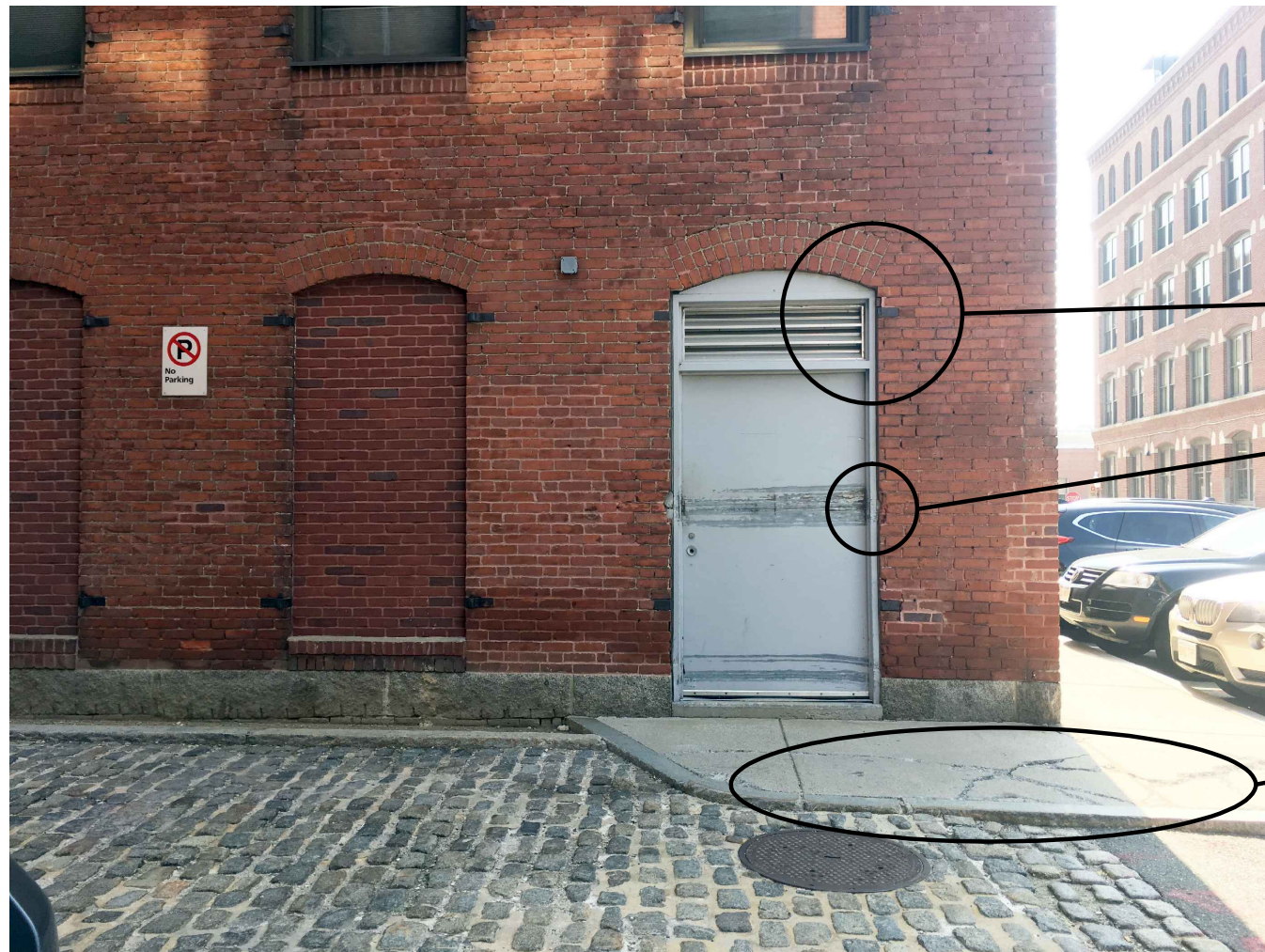
October 11, 2018



AERIAL VIEW



REAR OF 21 WORMWOOD STREET - VIEW FROM BINFORD STREET



BRICK CUT OUT FROM BENEATH SEGMENTED ARCH



EXISTING TRASH / RECYCLING ROOM DOOR



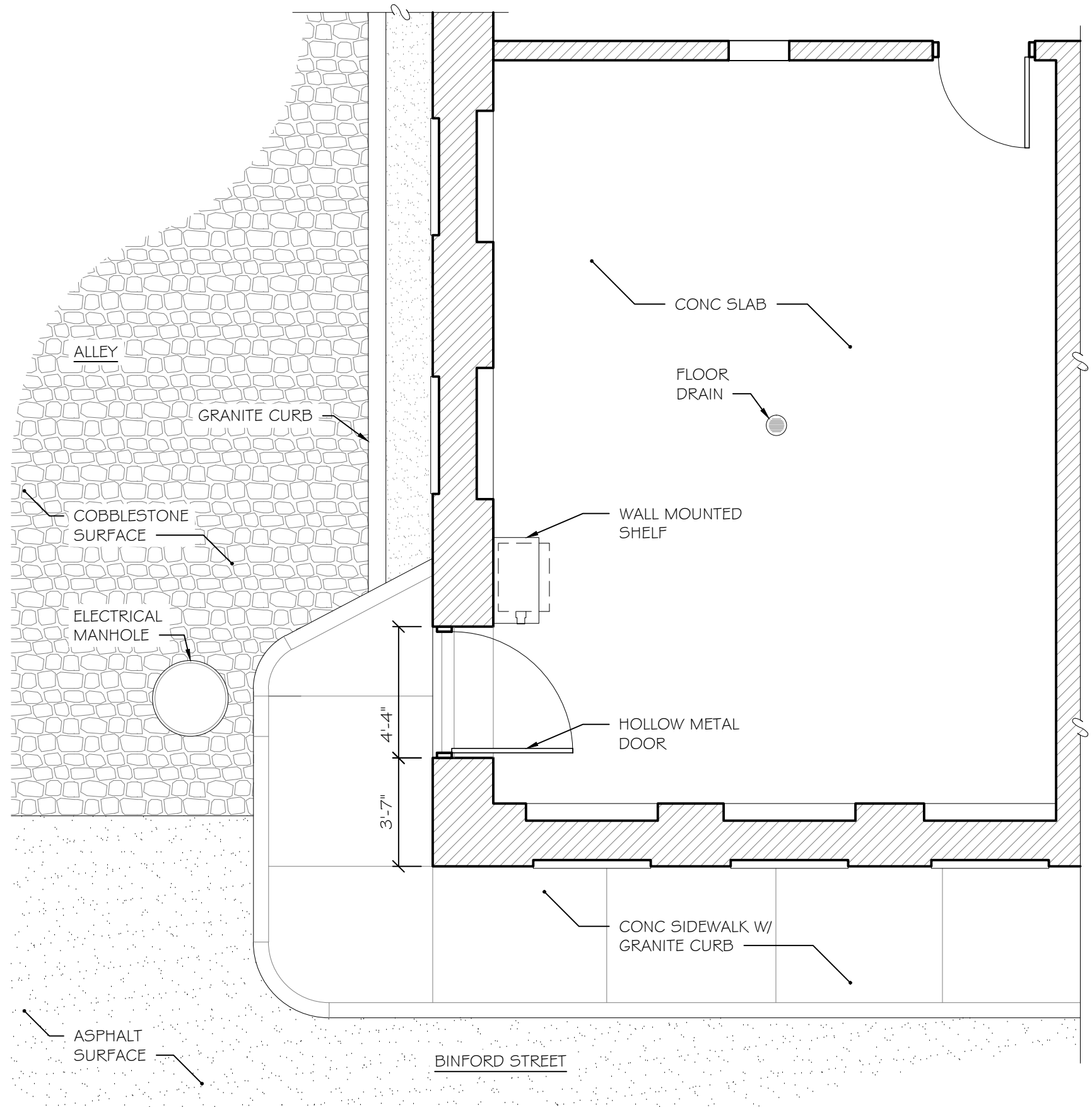
EMBEDDED FIRE SHUTTER HINGE CUT OFF

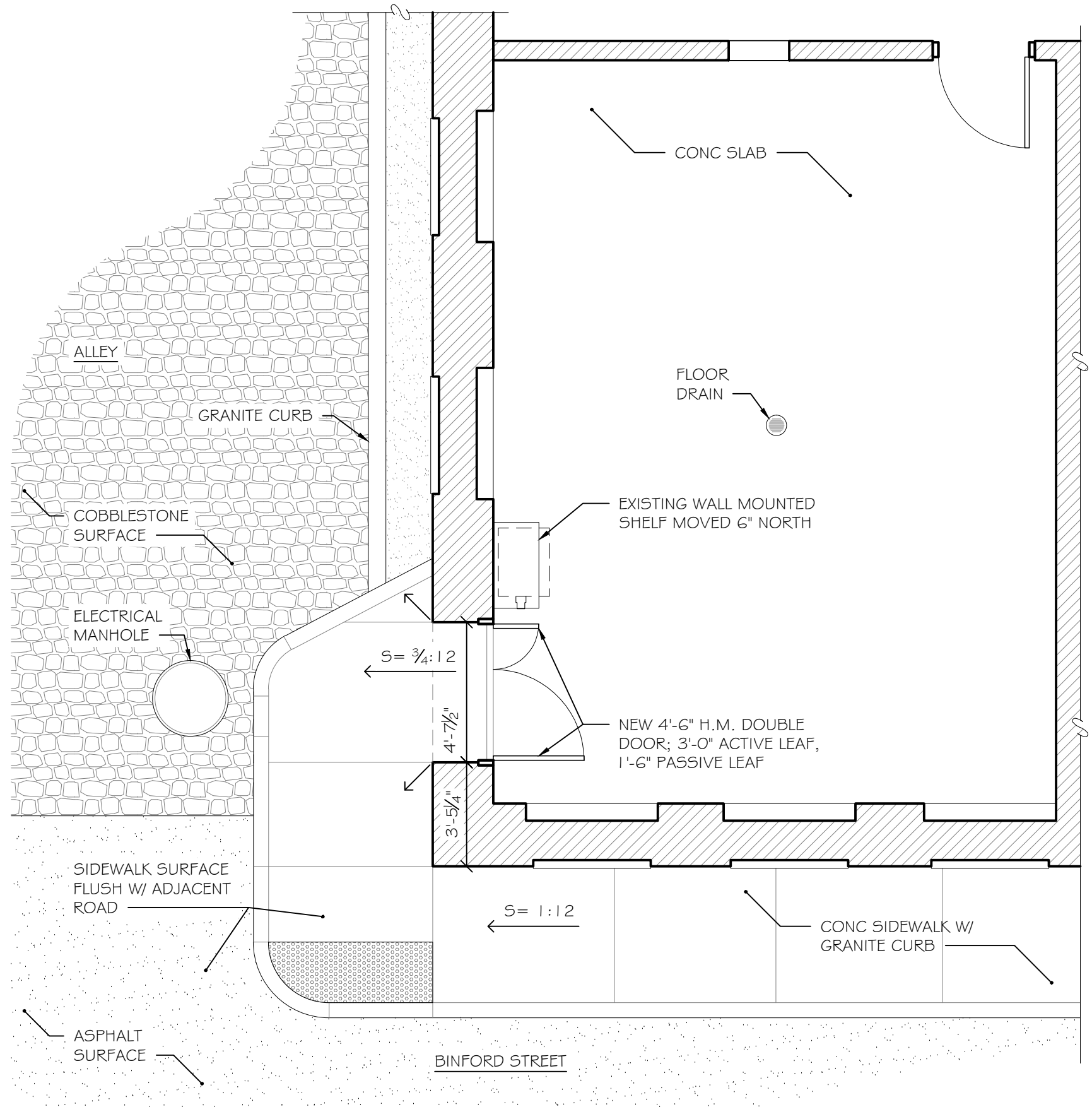


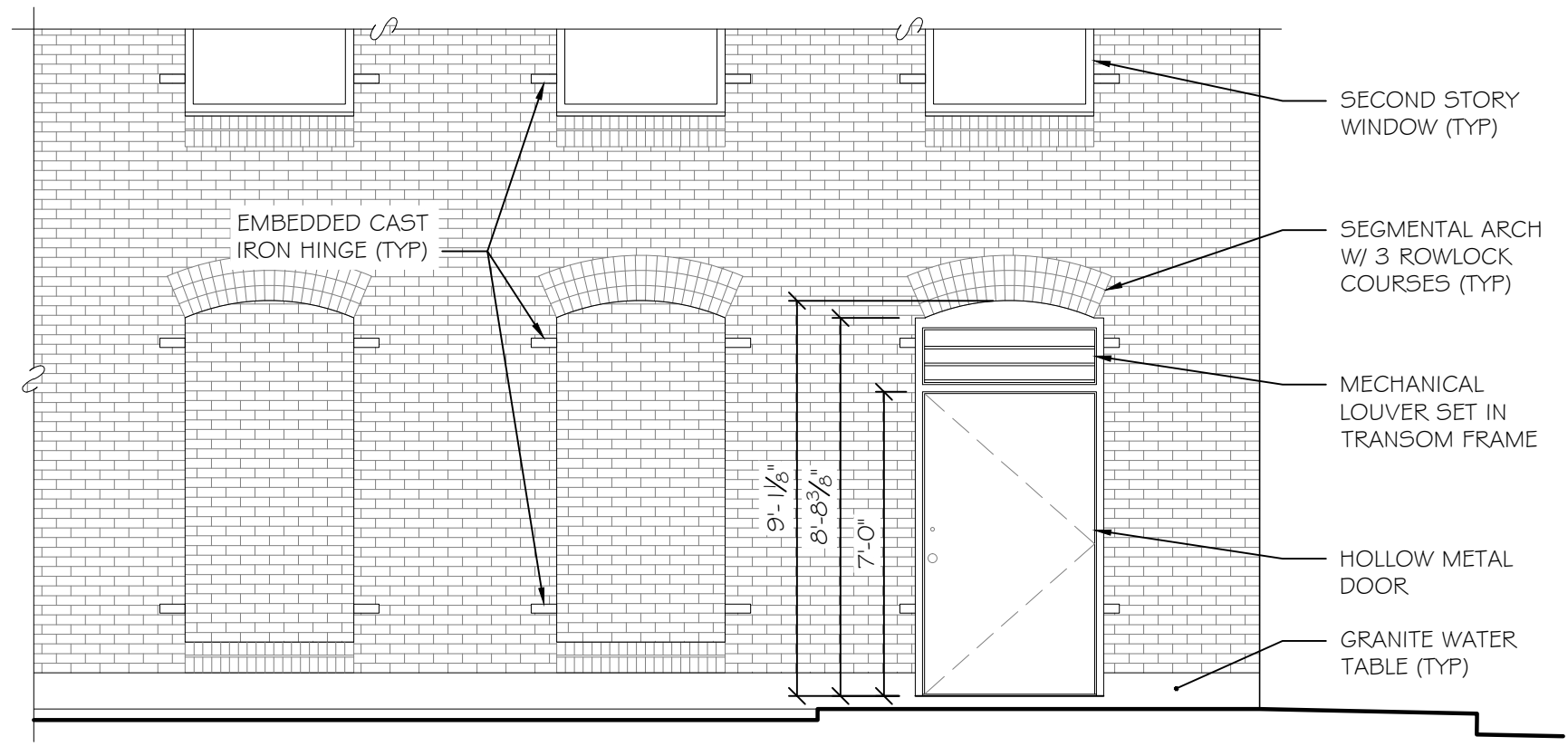
EMBEDDED FIRE SHUTTER HINGE INTACT (TYPICAL)



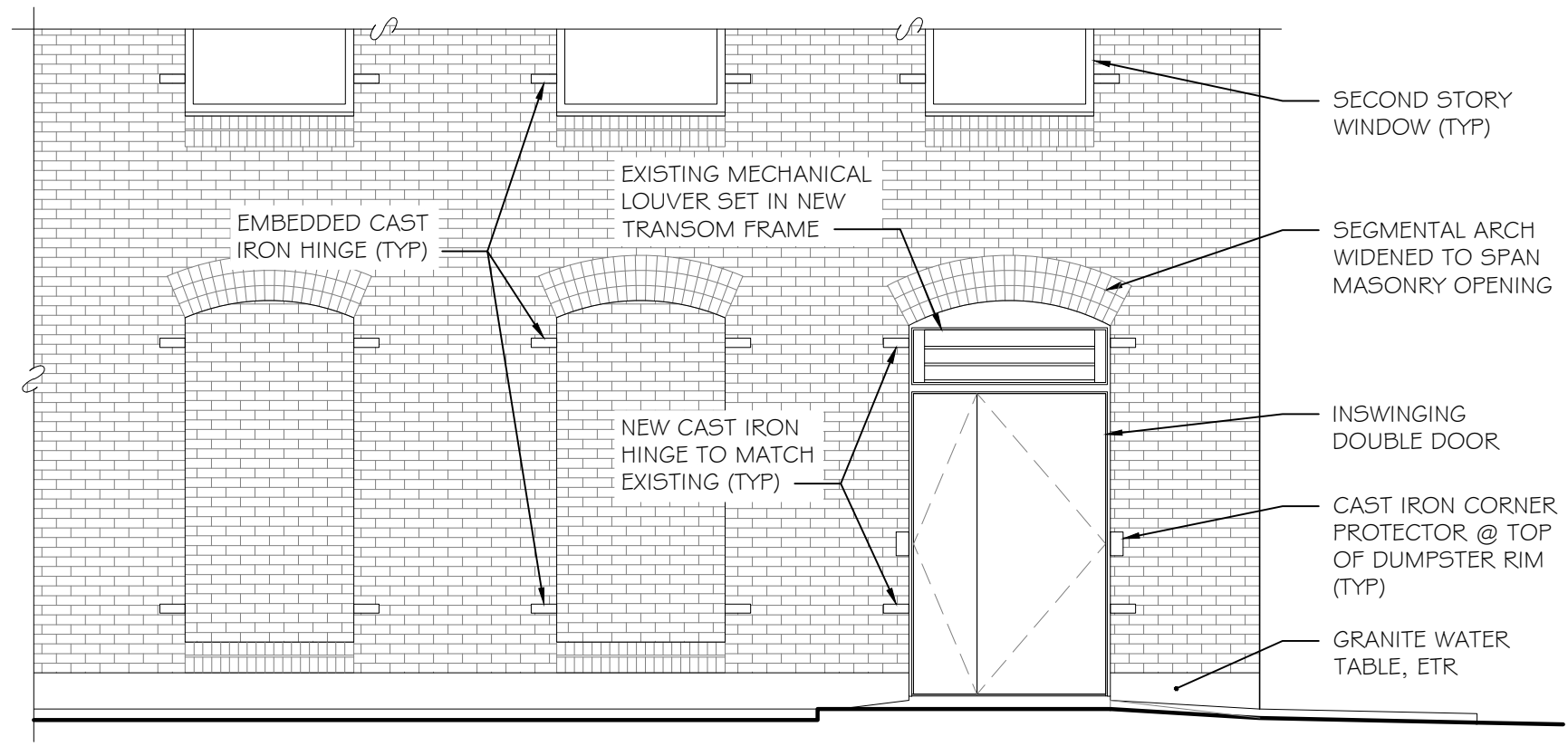
EXISTING TRASH / RECYCLING ROOM DOOR







PARTIAL WEST ELEVATION



PARTIAL WEST ELEVATION



VIEW FROM ACROSS THE ALLEY



VIEW FROM CORNER OF BINFORD STREET

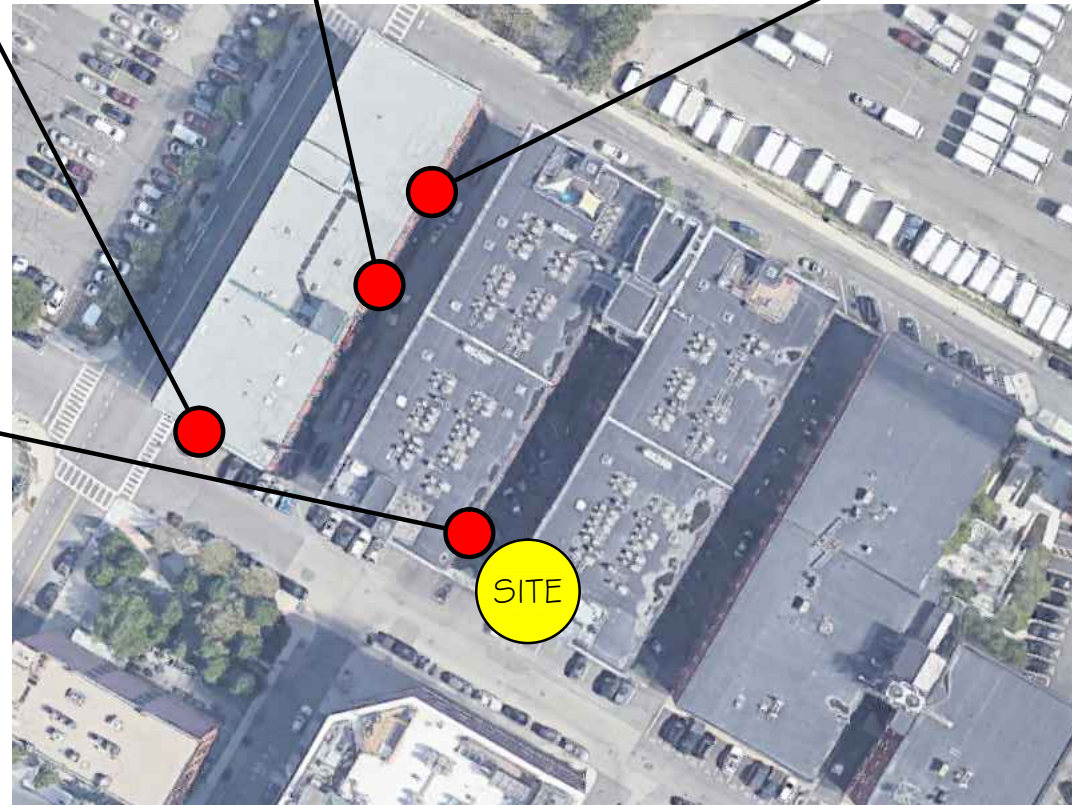
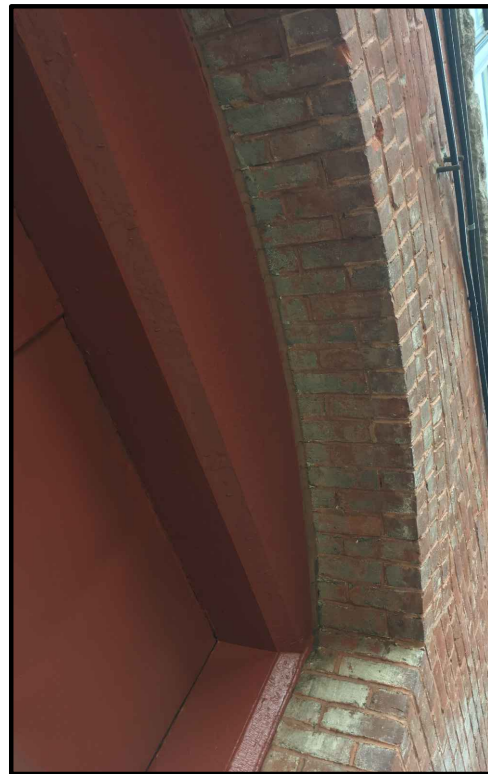
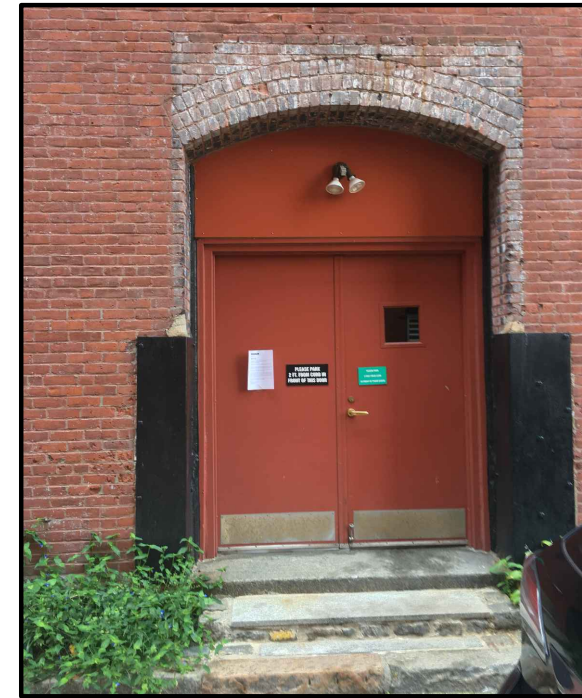


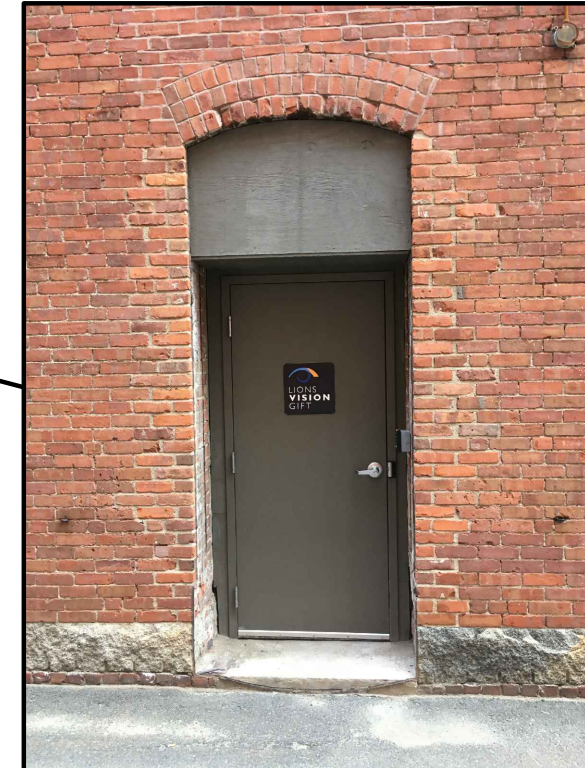
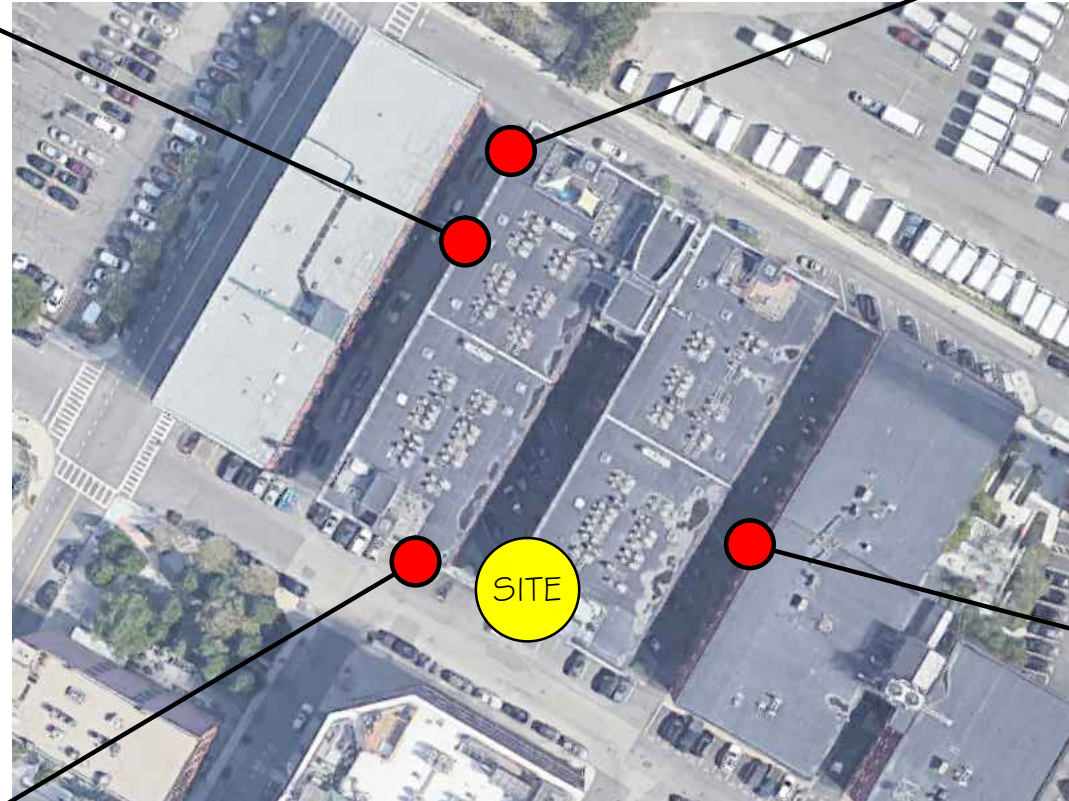
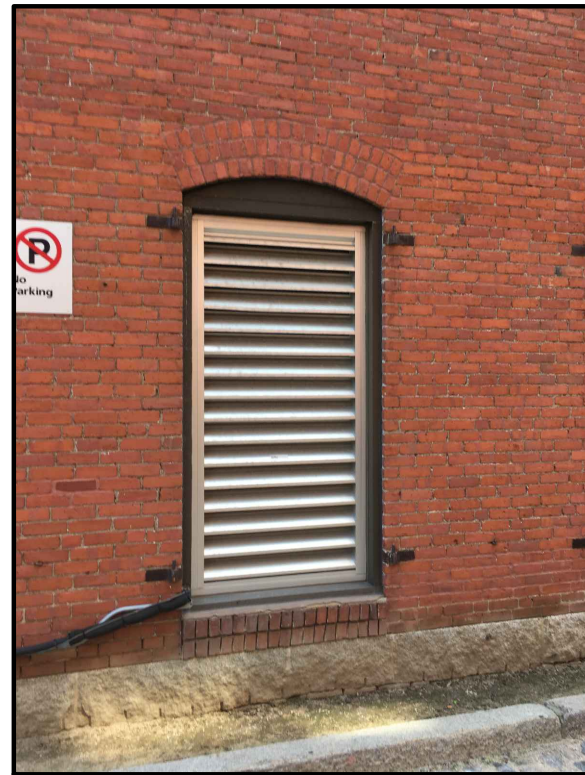
VIEW FROM DOWN THE ALLEY

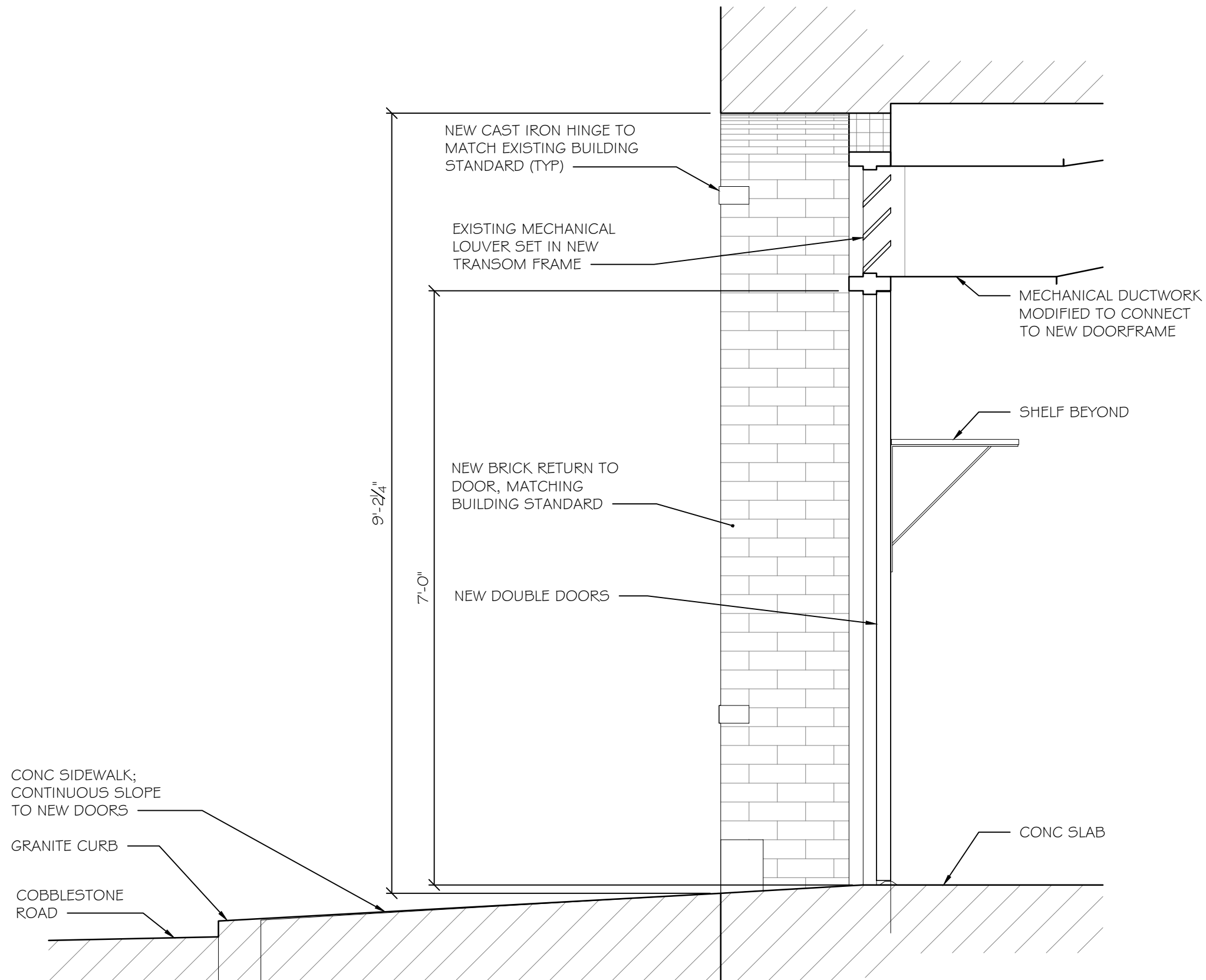


RAISED VIEW OF SIDEWALK

ADDITIONAL INFORMATION

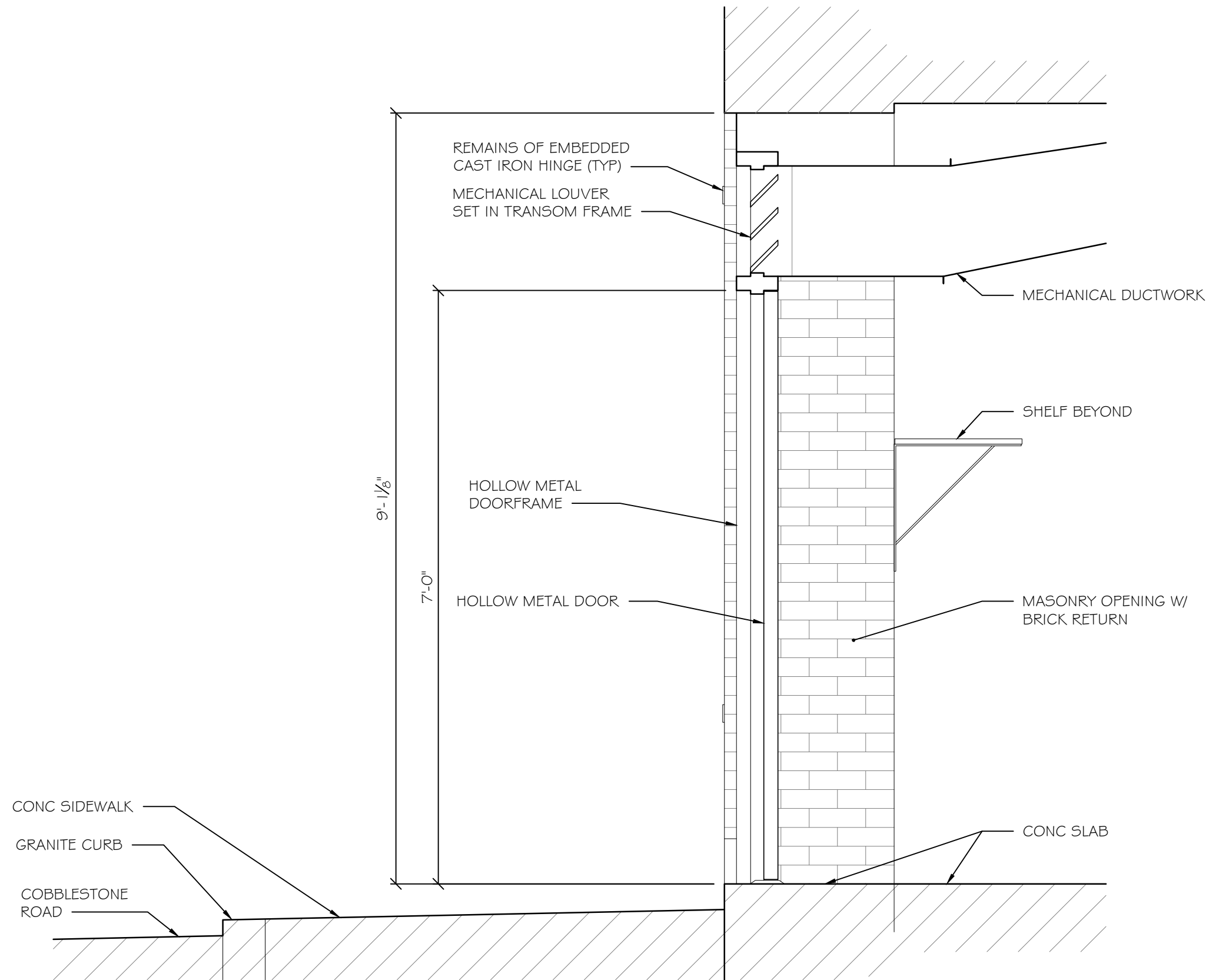






SECTION THRU PROPOSED DOOR





SECTION THRU EXISTING DOOR

