

Jamaica Pond Park Pathways & Entrances: Phase 2 Work

Jamaica Pond Park, Jamaica Plain

Description of Proposed Work

November 2018

Project Narrative:

Jamaica Pond Park is part of the Emerald Necklace—Boston’s park system designed by Frederick Law Olmsted. The Emerald Necklace was designated as a Boston Landmark in December 1989. It was also included on the National Register of Historic Places as the Olmsted Park System Historic District in December 1971. The Jamaica Pond Park Boathouse, the Bandstand, and the plaza between them were designed in 1915-1916 by the Olmsted Brothers.

The 2001 update to the *Emerald Necklace Master Plan* establishes park system-wide recommendations that are relevant to this pathway and entrances project, which have not yet been fully implemented, include:

- Stabilize slopes and areas that drain into water bodies to reduce erosion and siltation.
- Reinstate historic water edge treatment, regaining intended scenic qualities by removing invasive plants, particularly knotweed and phragmites.
- Provide better access to the park for all people, including those with limited mobility.
- Repair and reconstruct paths, steps, and bridges throughout the system.
- Reinstate scenic qualities of the parks as originally intended, using a historic palette of plant materials.
- Stabilize and enrich soils on eroded hillsides.
- Control and eradicate invasive species throughout the park system.
- To the greatest extent possible, provide for the maximum flexibility of use which is still sensitive to the historic intent of the park system.
- Assimilate existing facilities which are not in character with the landscape through plantings and sensitive reorientation, or relocate them.
- Improve recreational opportunities for walking, cycling, jogging, boating, picnicking, theatre, free-play in open areas, softball, sledding, sitting, watching, nature study, contemplation, and other forms of scenic enjoyment.
- Develop a consistent, historically sensitive park vocabulary of light standards, benches, and other furnishings.
- Create a historically sensitive park signage system which includes orientation, interpretation, and regulatory signs.
- Use durable materials for all repair and reconstruction of structures, surfaces, and furnishings while concurrently being sensitive to historic design intent and global ecology.

The *Master Plan* also makes recommendations specific to Jamaica Pond Park which emphasize “the environmental and scenic qualities of the park” by recommending a preservation methodology of rehabilitation. These specific recommendations include:

- Stabilize pond edges and selectively thin vegetation.
- Reinstate historic plantings throughout the park, including trees that overhang the water for scenic effect, and plants that provide cover and food for wildlife.
- Re-establish understory plantings, especially on steep slopes where erosion is occurring, such as below Pinebank.
- Create access to pond edge at certain points for fishing.

Jamaica Pond Park Pathways & Entrances: Phase 2 Work**Jamaica Pond Park, Jamaica Plain****Description of Proposed Work**

November 2018

Project Narrative (continued):

The scope of work for this Phase 2 project includes:

1. Rehabilitation of existing walking pathways encircling the pond and connecting to entry ways, including resurfacing of most pathways, as shown on the plans. It also includes the redevelopment of a runners' path.

Please see diagram showing perimeter pathway and runners' path, page 35.

- a. The main walking perimeter pathway is to be repaved in bituminous concrete which is proposed to be a consistent width of 10 feet wide. The pathways have been paved with bituminous concrete since at least the late 1970s according to historic plans and photographs. The 1975 plan entitled "Roadway Improvements Plan" (prepared by Fay, Spofford & Thorndike, Inc.) refers to the perimeter pathway as a "roadway" and shows cross-sections of the path as between 8 to 10 feet wide and comprised of bituminous concrete.
- b. Rehabilitation of pathways encircling the pond with a consistent surface treatment on all paths in active use, including one located just to the south of the boathouse connecting the perimeter path the DCR multi-use pathway, and one connecting to the DCR multi-use pathway to the pathway which connects Pinebank Promontory. Formalizing these pathways will help to reduce erosion of the existing earthen or gravel slopes and sedimentation of the pond.
- c. A social trail connecting the Arborway at the William F. Kelly Circle to Jamaica Pond Park's perimeter pathway will be formalized and made accessible with a bituminous surface and grades that are MAAB-compliant.
- d. The stone dust pathway with granite stairs which was installed in 1989 and leads to the "beach" area on the southwestern corner of the pond is to be removed and seeded over.
- e. In select locations, a hardened edge is proposed to be comprised of reclaimed jumbo cobblestones set as curbing to keep people on the perimeter pathway, as well as to manage stormwater. Existing vertical granite curbing (installed in 1989) will remain in place, unless construction pricing (via unit prices) allows for removal and replacement with the jumbo cobblestone curbing.
- f. The proposed runners' path is to be a 24-inch wide aggregate surface (a mix of gray crushed stone sized from 3/8 of an inch to fines) which runs parallel to the perimeter path but does not extend the full circumference of the pond. The runners' path is intended to provide an alternative path with a more desirable surface for runners to run on while protecting the planted and natural areas beyond the paved perimeter path and therefore to reduce sedimentation of the pond. The 1975 "Roadway Improvements Plan" also includes a 2-foot wide runners' path which was comprised of a "Reslite or Rub-kor track surface".
- g. As budget allows, the rehabilitation of the DCR multi-use path has been included as an add alternate in the project. The resurfacing has been divided into two separate alternates with the portions of the multi-use path in the worst conditions (and the decompaction of associated soils) being the priority work.

2. Rehabilitation of park entries near the intersections of Jamaica/Pond Street, Perkins/Chestnut Streets, and Jamaica/Eliot Street

See enlargement plans of each of the entrances, pages 36-39.

Improvements to the park entrance at the Jamaicaway/Pond Street near the boathouse and bandstand include:

- a. Replace existing 8-foot benches added over time with the Emerald Necklace bench, currently approved as the standard for the Park. The linear bench will be faceted in 4-foot segments and will follow the existing pathway edge from near the Jamaica/Pond Street. It is designed to coordinate with the Emerald Necklace bench. All benches shall be set on concrete pads with lamp black pigment. Please see topic 6a below for a more in depth discussion on the benches.

Jamaica Pond Park Pathways & Entrances: Phase 2 Work**Jamaica Pond Park, Jamaica Plain****Description of Proposed Work**

November 2018

Project Narrative (continued):

- b. Installation of U-style black powder-coated bike racks. Existing bike racks next to the boathouse will be removed with new racks located along the edge of the walkway, set in concrete (with lamp black pigment) and a flush curb for accessibility, and will be located opposite the Thomas J. Griffin Walk memorial stone to maintain the symmetry of the space.
- c. Additional signage and pavement markings are also included; further discussed below at topic 6f.
- d. Re-grading for accessibility at each door threshold of the Boathouse and Bandstand, and to provide an accessible route from the DCR multi-use path and Pond Street park entrance at the Jamaicaway

Improvements to the park entrance at Perkins/Chestnut Streets include:

- e. Removal of a social trail that cuts across the planting area. The social trail—due to existing topography and utilities—cannot be formalized to meet Massachusetts Architectural Access board (MAAB) guidelines for longitudinal slope.
- f. Shrub plantings in this area are based on historic photographs and will help to deter the re-emergence of the social trail.
- g. Linear, faceted benches are proposed for this entry as well. Historically, they were flanking the entry pathway, however, given the topography and MAAB regulations, they are currently proposed to be located facing the pond where views are optimal and pathway grades meet accessibility guidelines.
- h. Bike racks are proposed near their current location and adjacent to the park rules signs that state that bikes are not allowed to be ridden within the park.
- i. A new drinking fountain with bottle filler and dog bowl is proposed along the perimeter pathway where it will be accessible to pedestrians in the park.
- j. Cobblestone pavement has been proposed at two small locations on either side of the entry to discourage pedestrian access from the entry along Chestnut Street as there are no sidewalks here.
- k. Additional signage and pavement markings are also included; further discussed below.

Improvements to the park entrance at Jamaicaway/Eliot Street include:

- l. Removal of an existing grass area that is compacted and worn due to pedestrian traffic. An 8-foot paved pathway is proposed to allow pedestrians entering from this location to walk south accessing the perimeter pathway without trampling grass. The resulting triangular area is proposed to be paved with cobblestones.
- m. Additional signage and pavement markings are also included; further discussed below at topic 6f.

3. Rehabilitation of the Jamaica Pond Park Boathouse plaza between the Boathouse and Bandstand

See enlargement plan of boathouse, pages 40-41.

The intent of the rehabilitation of the Boathouse/Bandstand plaza is to restore the design intent of the space. This landscape post-dates the rest of the park as it was designed by the Olmsted Brothers, circa 1915. Rehabilitation includes:

- a. Repair of the existing cast stone steps maintaining as much of the historic material as possible, while using existing treads removed to install the new accessible ramp to replace or provide Dutchmen for broken treads.

Jamaica Pond Park Pathways & Entrances: Phase 2 Work**Jamaica Pond Park, Jamaica Plain****Description of Proposed Work**

November 2018

Project Narrative (continued):

- b. Installation of powder-coated black steel handrails at either side of the stairs adjacent to the boathouse and bandstand to meet MAAB guidelines. Handrails are intended to be simple in design while meeting MAAB and Massachusetts Building Code regulations.
- c. Installation new MAAB-compliant accessible ramp with cast-in-place ramp surface, cast stone cheek walls, and black powder-coated steel handrails.
- d. Repave cast-in-place concrete pavement in plaza between Boathouse and Bandstand. Adjust grades to ensure stormwater runoff into the trench drains and rain garden planters and to ensure that all door thresholds meet MAAB requirements for maximum change in elevation. (Gradients of the plaza will be 2.0% maximum gradient in all directions to meet MAAB guidelines.)
- e. Rehabilitate the planters to receive stormwater from the plaza and Boathouse and Bandstand roofs. Plantings selected are tolerant of both wet and dry conditions. Curbs at planters' edge will be cast stone similar to the existing boathouse stair treads. Trench drains (8 inches wide and comprised of ductile iron) will collect stormwater from the plaza, as well as the Boathouse and Bandstand roofs. The relocation of the existing downspouts on the structures will direct the stormwater to the rain garden planters. See topic 7a below for a more in depth discussion on the proposed plant palette.
- f. Repair Olmsted Brothers' features at the water's edge: the concrete and brick "fence", the steel archway/gate, and the pendant lantern fixture on the archway.
- g. Remove the flagpole as research shows that it is a later addition to the space (circa 1970s)
- h. Burial of existing overhead wires (electrical), which connect from Bandstand to Boathouse, in conduit adjacent to the Boathouse/Bandstand monumental stairs.

4. Rehabilitation of the Perkins/Chestnut Street stairs and the stairs near the Jamaica Pond to reset the granite treads in place, install handrails and plantings, and restoration of the Hancock stairs and the puddingstone stairs

See photographs and sketches of stairways, pages 42-48.

Rehabilitation of the Perkins/Chestnut Street stair include:

- a. Catalogue, remove, and reset the existing granite treads to stabilize the stairs and ensure that treads have consistent risers.
- b. Plant the side slopes of the stairs to deter visitors from bypassing the stairs. The slopes are eroding adding to the sedimentation of the pond. The slopes are proposed to be planted with *Rhus aromatica 'Gro Low'*, fragrant sumac, a species included on the *Emerald Necklace Plant List*.
- c. Install new black powder-coated steel handrails on the either side of the stairs. The handrails are to be installed outside of the stairs preventing the need to core the historic granite treads for installation of the posts. It will, however, require one handrail to be secured to the mortared stone wall on the north side of the stairs. The handrails are being placed to meet MAAB guidelines 521 CMR 16.4 – Stairs, and with the support of the public.
- d. Due to the existing grades at the top of these stairs (approximately 12% and greater), 6 new granite stair treads are proposed to be installed. Based on the precedent of the Hancock stairs which access Pinebank Promontory, the new treads are to be located approximately 15 feet above the existing treads and will be comprised of new granite so that they are not read as part of the historic stairs. The handrail for the new stair segment will be separate from the historic stair runs.

Jamaica Pond Park Pathways & Entrances: Phase 2 Work**Jamaica Pond Park, Jamaica Plain**

Description of Proposed Work

November 2018

Project Narrative (continued):

Rehabilitation of the stairs near Jamaica Pond include:

- e. Catalogue, remove, and reset the existing granite treads to stabilize the stairs and ensure that treads have consistent risers.
- f. Removal of the existing cobblestone spillway on the right side of the stairs. This spillway is non-historic having been installed in the 1980s or 1990s to control runoff coming down the slope. The runoff will now be captured near the top of the stairs in a proposed dry well.
- g. Plant the side slopes of the stairs to deter visitors from bypassing the stairs. The slopes are eroding adding to the sedimentation of the pond. The slopes are proposed to be planted with *Rhus aromatica* 'Gro Low', fragrant sumac. Fragrant sumac was selected based its ability to stabilize slopes, as well as its ability to grow in both sun and shade conditions.
- h. Install new black powder-coated steel handrails on the outside of the stairs. Installing outside of the stairs prevents the need to core the historic granite treads for installation of the posts. The handrails are being placed to meet MAAB guidelines 521 CMR 16.4, and with public support.

Repairs to the puddingstone stairs include:

- i. Catalogue, remove, and reset the existing puddingstone treads to stabilize the stairs and ensure that treads have consistent risers. The treads will be reset with a mortar setting bed and mortared joints between the puddingstone tread pieces.
- j. Pave landings between stair runs with bituminous concrete.
- k. No handrails are to be installed with these stairs as they are not included as a part of the circulation pattern; that is, no path leads to or from the stairs. These stairs provide the visitor an opportunity to experience the original design intent of the stairs without the added handrails.
- l. Vegetation management to control the aggressive and invasive plant species which quickly grow over and hide the stair treads each season.

Repairs to the "Hancock stairs" include:

- m. Stabilize five brownstone treads that are loose and rocking by shimming

5. Stormwater management improvements including minor modifications to topography, the addition of sediment traps, the adjustment of existing swales, and the addition of limited new cobble spillways

See diagram of proposed stormwater management interventions, pages 49-50.

Stormwater management improvements include:

- a. Adjustments to the grading of the perimeter pathway to consistently pitch towards the pond. Longitudinal slopes will be adjusted slightly (1.5% to 2.0% longitudinal slopes) to ensure positive drainage to existing and proposed stormwater management structures and to avoid puddling on the pathway. Runoff will either be controlled along the pathway with a berm or hardened edge until it reaches a swale, a cobblestone spillway, or other intervention described herein.
- b. Where necessary and to ensure stormwater drains from the perimeter pathway, limited new cobble spillways will be incorporated. These will only be incorporated along the pathway which runs parallel to Perkins Street.

Jamaica Pond Park Pathways & Entrances: Phase 2 Work**Jamaica Pond Park, Jamaica Plain****Description of Proposed Work****November 2018****Project Narrative (continued):**

- c. Installing grass swales (in locations shown in the diagram on pages 49-50) on the uphill side of the perimeter pathway to collect water before it enters the pond
- d. Low grass berms are proposed on the pond side of the perimeter path to separate the runners' path and the paved perimeter path. The berm will help control the movement of stormwater runoff.
- e. Hardened edges will be mortared cobblestone curbing rather than new vertical granite curbing to maintain the naturalistic design intent. Select existing vertical granite curb and bituminous curbs will be replaced with cobblestone curbing as necessary and as funding allows. Hardened edges are only proposed along steep slopes where runoff could scour the side slopes of berms.
- f. Removing the existing cobblestone spillway at pond stairs and installing dry well at the top of the slope
- g. At each cobblestone spillway, new drainage structures (12" diameter) shall be installed with sediment traps. These structures will be set in a bituminous concrete apron between the cobblestone spillway and the perimeter pathway.
- h. A bio-swale is proposed near the Chestnut/Perkins Street entrance at the northernmost point of the pond. The bio-swale shall be planted with appropriate shrubs selected from the Olmsted planting plans for Franklin Park and the Muddy River and that are also native to Massachusetts. **Coir logs** will be incorporated into the bio-swale to slow the flow of water.
- i. A sand filter is proposed in an existing grassy basin at the eastern most extents of the park near the intersection of the Jamaicaway and Lochstead Avenue. The sand filter will drain into an existing catch basin after passing through a sediment fore bay. This intervention will collect stormwater coming down the paved pathway from north which parallels the DCR multi-use path.
- j. A new drainage structure is proposed at the north side of the intersection of DCR multi-use path and the Pond Street entry to control runoff from the DCR multi-use path. Additionally, an underground storage structure is proposed near the boathouse, using the existing catch basin with new MAAB-compliant drain cover.
- k. Existing social trails and gravel access drives shall be either seeded or paved to reduce erosion and sedimentation.
- l. Porous pavement (a shock-attenuating surface) is proposed at each of the three fitness equipment locations. Please see topic 6d for a more in depth discussion on the porous pavement for the fitness equipment.

6. Rehabilitation of park furnishings, including benches, signage, drinking fountains, and fitness equipment

Site improvement updates include:

- a. Additional benches are proposed around the pond edge, in addition to the linear faceted benches proposed at the Jamaicaway/Pond Street entrance and the Chestnut/Perkins Streets entrance. They will match the existing Emerald Necklace bench that is 8 feet long, powder-coated black steel stanchions with eased wood seat and back slats. As seen in the historic images, the original bench was a linear bench but it was comprised of a concrete stanchion with wood slats. This bench style was replaced with existing, approved Emerald Necklace bench in the late twentieth century. The *Emerald Necklace Master Plan* recommends "[d]eveloping a consistent, historically sensitive park vocabulary of light standards, benches, and other site furnishings" for the entire Emerald Necklace park system. It specifically recommends "the Victorian reproduction installed in 1988". The public has also stated their preference for the current steel for both aesthetic and comfort purposes. Bench installations will be sited to accommodate companion seating spaces at regular intervals.

Jamaica Pond Park Pathways & Entrances: Phase 2 Work**Jamaica Pond Park, Jamaica Plain****Description of Proposed Work**

November 2018

Project Narrative (continued):

The intent is that, as part of this project, the Parks & Recreation Department will have new pattern boards created which resemble the Emerald Necklace bench, which the Parks Department will then own so that they can be used throughout the historic park system. New 8-foot benches will be fabricated, as part of this project, to replace those that are broken and/or do not conform. Additionally, the linear, faceted benches will be of the same design. All benches will be set on a concrete pad (with lamp black pigment). See diagrams, page 51.

- b. Existing wood retaining walls, along Parkman Drive and Perkins Street, will be repaired with new timbers. The steel beams will remain in place and will receive new caps. Two short segment walls (approximately 10 feet long each) will be removed as they provide no substantial retaining; one of the long retaining wall runs will be shortened also.
- c. Existing chain link fence at the culvert on Parkman Drive and an existing guardrail on the south side of the boathouse (which does not meet current Massachusetts Building Code 780 CMR 1012.0 for guards) will be replaced with a new guardrail which meets Massachusetts Building Code 1012.0. This guardrail will be inspired by a historic guardrail designed by the Olmsted Brothers for the site (see historic image, page 18), but will be updated to meet current Building Code requirements. See detail, page 52.
- d. A new accessible fishing platform with adapted guardrail is proposed to the south of the boathouse. The space includes a bench and meets MAAB 521 CMR 61.00 – fishing piers and platforms. See image/detail for examples, page 53. (The guardrail detail is inspired by the historic guardrail shown in the image on page 18.)
- e. Fitness equipment will be replaced with off-the-shelf fitness equipment which matches the same essential function of what is currently on site. Equipment will include a push-up station, a pull-up station, and a sit-up plank station in the locations of the existing fitness equipment. The fitness equipment will be comprised of wood and powder-coated steel bars.

Based on ASTM F3101: *Unsupervised Public Use Outdoor Fitness Equipment*, the fitness equipment requires a safety surfacing which meets ASTM F1292 and F1951 for shock attenuation. The plans include a porous, poured-in-place surfacing for the training space and clearance space required and established by the manufacturer. The surfacing shall be installed in a color in a designed to recede into the surrounding, natural landscape. The porous pavement shall be a composite poured-in-place system that is comprised of recycled rubber (3/8 of an inch) and a urethane binder.

The requisite fitness equipment signage will also be included. Accessible routes shall be provided to the fitness equipment clearance areas, as necessary, with a bituminous concrete path. For examples of fitness equipment, signage, and porous flexible paving, see pages, page 54-55.

- f. Park wide signage includes:
 - Refurbish/replacements of the existing black historical signs identifying Jamaica Pond with limited rules
 - Replacement of the park rules sign, now with white text on black, in both English and Spanish
 - New small rules signs, including: “Do Not Feed the Wildlife”, “No Swimming/No Skating”
 - New directional signage identifying where pedestrians are allowed and where cyclists are allowed on the park pathways and on the DCR multi-use pathway. This signage is recommended in the *Emerald Necklace Master Plan*: “Biking and jogging routes [to be] identified by symbol-signs”.
 - New pavement markings identifying where pedestrians are allowed and where cyclists are allowed on the park pathways and on the DCR multi-use pathway

See diagram of proposed signage locations, and examples of Parks’ signage, pages 56-59.

Jamaica Pond Park Pathways & Entrances: Phase 2 Work**Jamaica Pond Park, Jamaica Plain****Description of Proposed Work**

November 2018

Project Narrative (continued):**7. Landscape improvements including removal of invasive plants, tree pruning, hazardous tree removal, stump removals, and new plantings**

See plan diagram of target areas for invasive removal and vegetation restoration areas, page 60.

- a. Invasive species documented on site to be removed include *Fallopia japonica*, knotweed; *Rosa multiflora*, multiflora rose; *Rhamnus cathartica*, common buckthorn; *Celastris scandens*, bittersweet; *Ailanthus altissima*, tree-of-heaven; *Acer platanoides*, Norway maple; *Phellodendron amurense*, amur cork-tree; and, *Robinia pseudoacacia*, black locust. The plans include the removal of two trees above 8-inch diameter at breast height (DBH), twenty-nine saplings, twelve stand-alone shrubs, and approximately 42,720 square feet of additional stands of invasive species, predominantly knotweed. All work will be coordinated with the City Arborist/Tree Warden.
- b. The plans also incorporate the removal of thirty trees that are dead or severely damaged and 32 existing tree stumps. All tree stumps will be ground, removed, and backfilled with topsoil.
- c. The planting plans include the installation of fifty new trees, approximately 425 shrubs, the seeding of swales and slopes with a mow-able, grass or grass-like seed mix. All plantings will be species that are included on the Olmsted planting plans for Franklin Park and the Muddy River and that are also native to Massachusetts. (The original planting plan for Jamaica Pond Park is not available in the Olmsted Archives.) In lieu of an original planting plan, the *Emerald Necklace Plant List*—compiled by Boston Parks and Recreation Department—and historic photographs have been used to determine a plant palette and planting design for the areas where planting is proposed.

Plantings will be established in wooded areas that have canopy gaps, in areas where invasive plants are being removed, and in locations that provide ample space for a new tree canopy. Plantings will follow the design intent of the Olmsted planting while preserving significant views, enhancing wooded areas, assisting in stormwater treatment and filtration, and reducing erosion.

The only deviation from this palette is the planting of the rain gardens in the boathouse/bandstand plaza. The plantings selected for these planters need to be tolerant of variable soil conditions (inundated and dry) and there is precedent for a more ornamental plantings in this area (see historic image on page 17). Therefore, the plant palette for these planters deviates from the *Emerald Necklace Plant List*. Plant selections have been made that provide for a full season of blooms and winter interest; that are predominantly Massachusetts native species; and, that have showy blooms that will help draw in visitors to the rain garden feeding the environmental education intent of the space.

- d. New planting areas will be enclosed with a temporary fence which will be maintained for a minimum of a two-year plant period, to be assessed seasonally after that time. The fence will be used not only to protect the new plantings and give them time to establish, but also to train visitor to stay out of planting beds. The plant establishment fence will be accompanied by informational signage for the public. The fence shall be a 3-foot high barrier constructed of 3-foot steel T-post set 2 feet (minimum) in the ground at 4-foot intervals maximum. The fencing shall be black vinyl-coated, 14-gauge welded wire mesh with 1-inch by 2-inch openings, secured with tension wire at top and bottom. Signs shall be placed every 40 feet on center and will read "PLANT ESTABLISHMENT AREA". Signs shall be aluminum, no smaller than 10 inches by 16 inches. See example image of fence, page 61.
- e. Along the Perkins Street edge, where on-street parallel parking is provided, visitors step out of their cars to walk down the steep slope, trampling vegetation, compacting the soils, and eroding the slope. Improvements to this

Jamaica Pond Park Pathways & Entrances: Phase 2 Work**Jamaica Pond Park, Jamaica Plain**

Description of Proposed Work

November 2018

Project Narrative (continued):

park edge include decompaction of the soils and re-vegetating the slope. The slope will be decompacted using a series of methods. Vegetation will include a grass seed mix along the slope with pockets of low shrubs around specimen trees—existing and proposed. The fencing along this edge will include gaps at select locations. See diagram of proposed decompaction techniques, page 62.

- f. Tree pruning will be limited to the removal of deadwood and crown cleaning, crown raising along the pathways. Tree removals are only in the case of hazard trees that are near the end of the life span. In some locations, existing walkways will be adjusted to account for existing tree trunks which are growing into the pathway.

Jamaica Pond Park Pathways & Entrances: Phase 2 Work

Jamaica Pond Park, Jamaica Plain

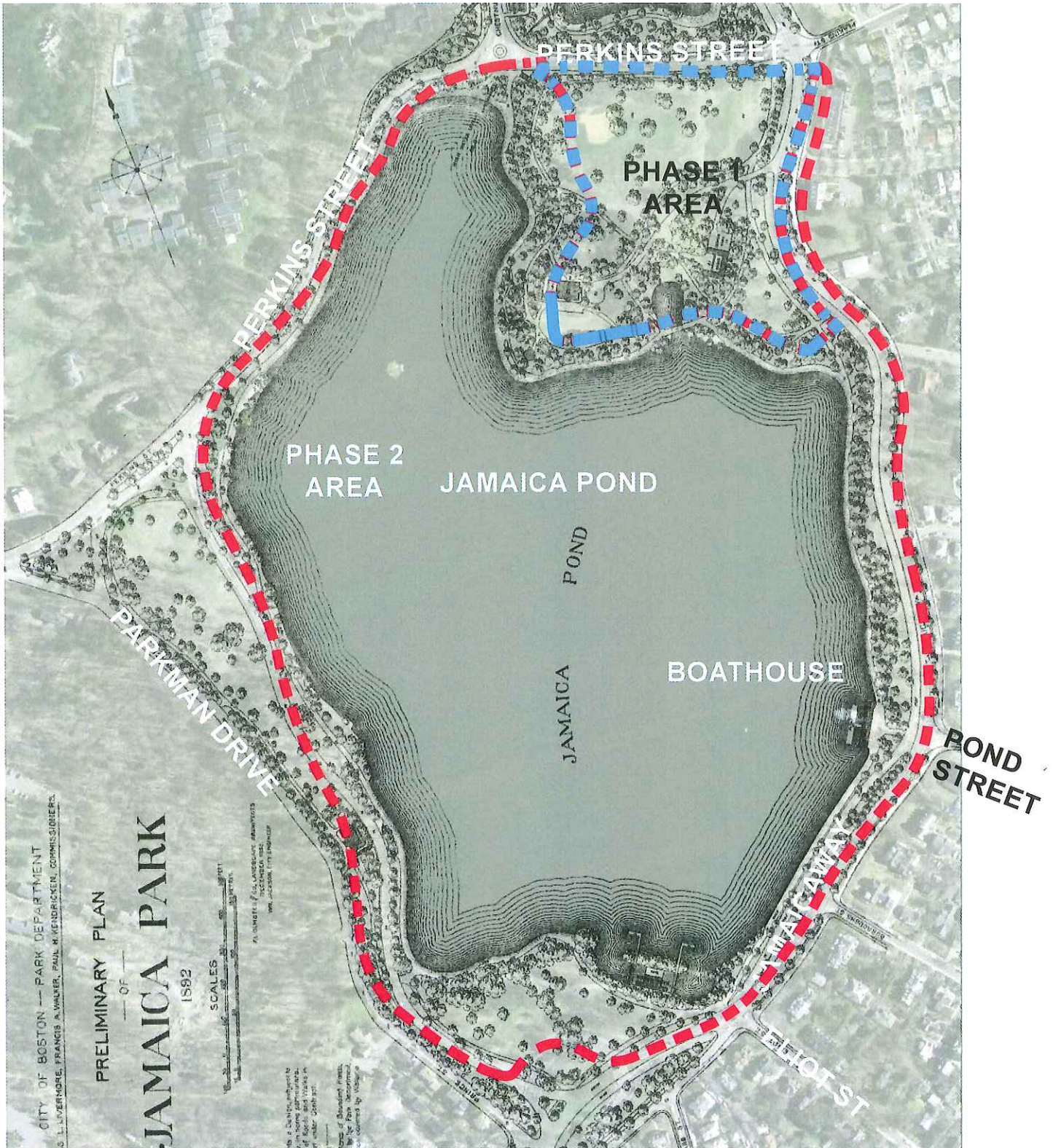
Description of Proposed Work

November 2018



2018 Aerial photograph of Jamaica Pond Park with approximate limits of Phase 2 project area in red and Phase 1 project area in blue. The red circles identify the location of the four sets of stairs which fall in or near the Phase 1 project area, but are included with the Phase 2 project scope.

Jamaica Pond Park Pathways & Entrances: Phase 2 Work
Jamaica Pond Park, Jamaica Plain
Description of Proposed Work
November 2018



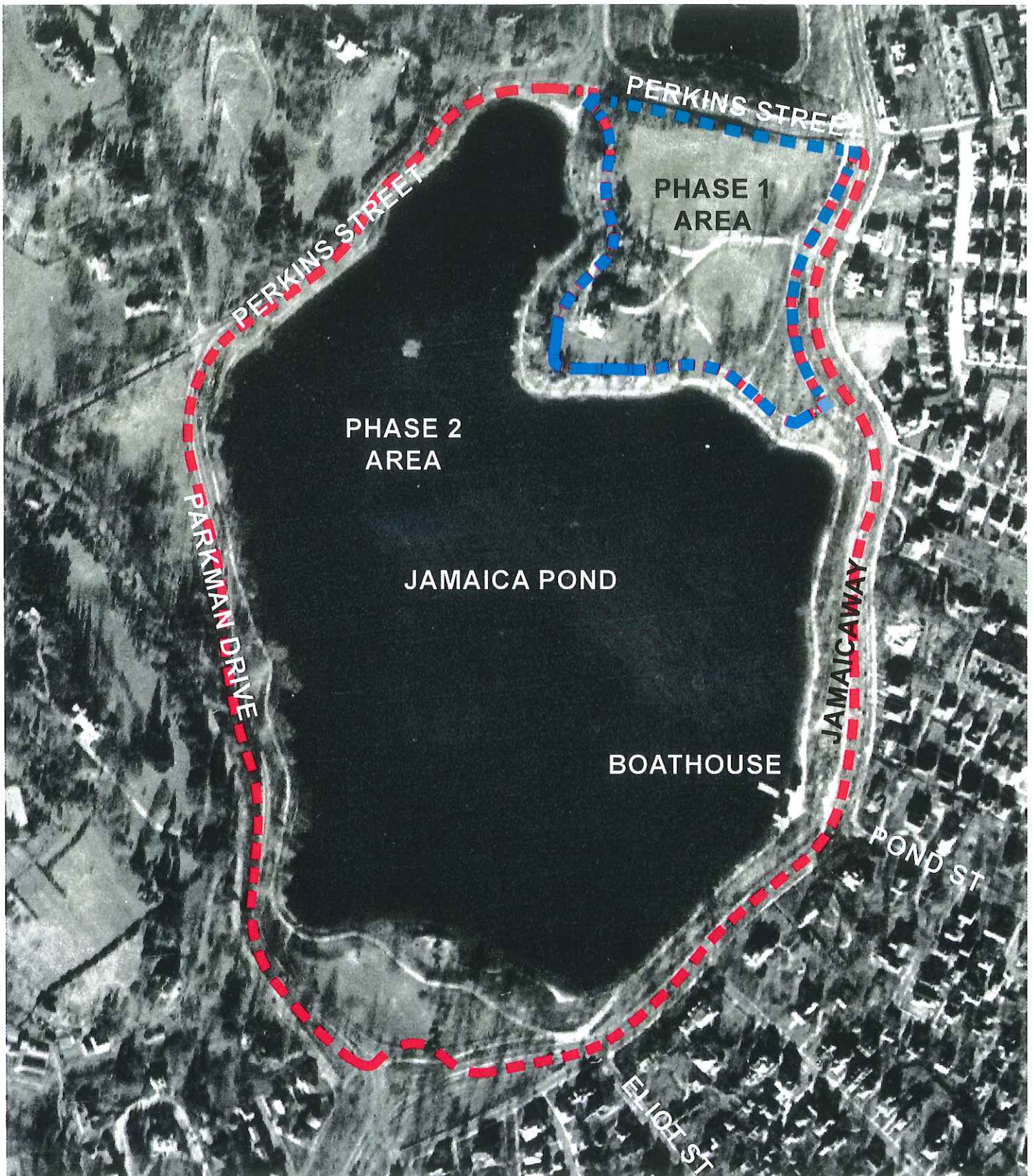
Enlargement 1892 Lithograph of Jamaica Pond by F. L. Olmsted & Co. (Courtesy of Olmsted NHS Archives)
overlaid on 2015 aerial photograph

Jamaica Pond Park Pathways & Entrances: Phase 2 Work

Jamaica Pond Park, Jamaica Plain

Description of Proposed Work

November 2018



1938 aerial photograph

Jamaica Pond Park Pathways & Entrances: Phase 2 Work

Jamaica Pond Park, Jamaica Plain

Description of Proposed Work

November 2018



Perkins/Chestnut Street Entry, 1900; Courtesy of ASLA.org



"Beach" along north shore of Jamaica Pond near Perkins/Chestnut Street entry, no date; Courtesy of www.cardcow.com

Jamaica Pond Park Pathways & Entrances: Phase 2 Work

Jamaica Pond Park, Jamaica Plain

Description of Proposed Work

November 2018



Perkins/Chestnut Street Entry, no date; Courtesy of Olmsted NHS Archives

Jamaica Pond Park Pathways & Entrances: Phase 2 Work

Jamaica Pond Park, Jamaica Plain

Description of Proposed Work

November 2018



Boathouse & Bandstand, no date; Courtesy of Olmsted NHS Archives



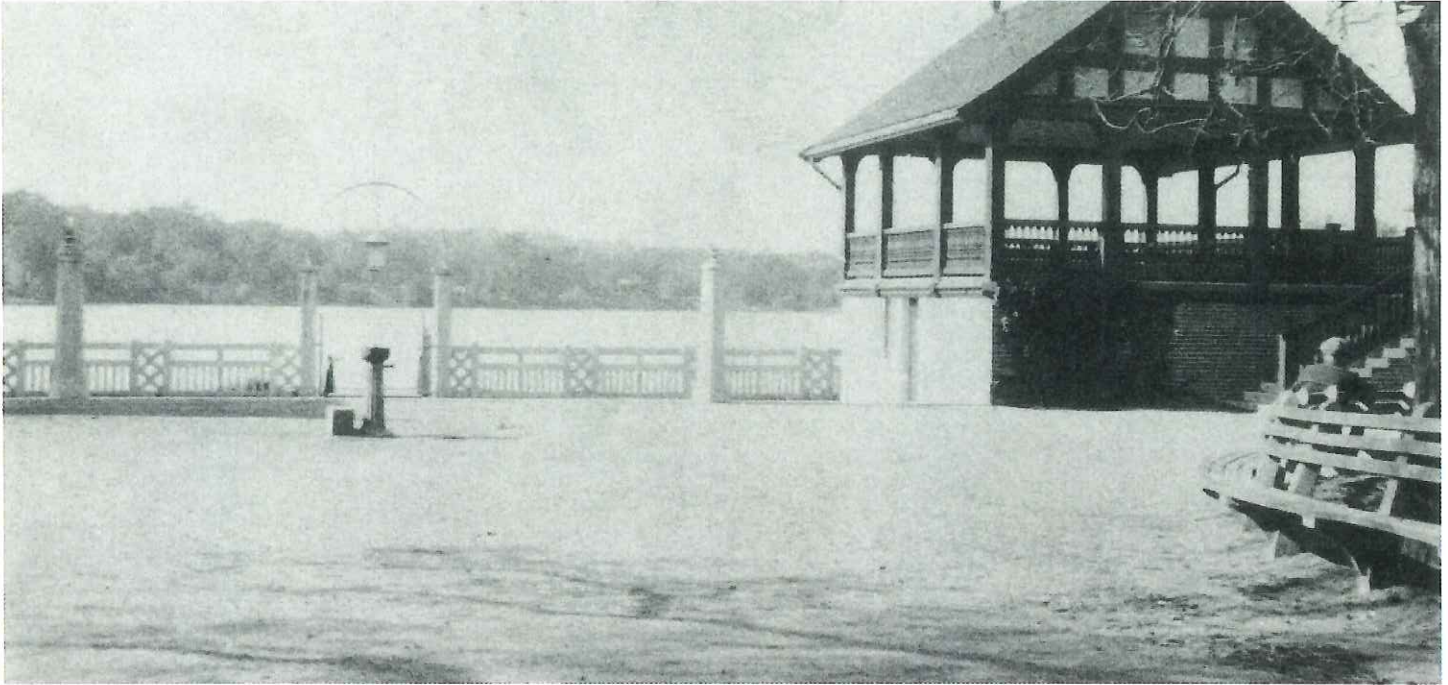
Boathouse & Bandstand, 1915; Courtesy of ASLA.org

Jamaica Pond Park Pathways & Entrances: Phase 2 Work

Jamaica Pond Park, Jamaica Plain

Description of Proposed Work

November 2018



Bandstand & Boathouse/Bandstand plaza, no date; Courtesy of Olmsted NHS Archives



Jamaica Pond edge, no date; Courtesy of Olmsted NHS Archives

Jamaica Pond Park Pathways & Entrances: Phase 2 Work

Jamaica Pond Park, Jamaica Plain

Description of Proposed Work

November 2018



Bank stabilizing vegetation, circa 1905; Courtesy of Olmsted NHS Archives



Jamaica Pond edge with open views, circa 1900; Courtesy of Olmsted NHS Archives

Jamaica Pond Park Pathways & Entrances: Phase 2 Work

Jamaica Pond Park, Jamaica Plain

Description of Proposed Work

November 2018



Boathouse/Bandstand plaza and Bandstand, 2018



Surrounding landscape at Boathouse/Bandstand plaza. Note: overhead wires, bike racks, and drinking fountain, 2018

Jamaica Pond Park Pathways & Entrances: Phase 2 Work
Jamaica Pond Park, Jamaica Plain
Description of Proposed Work
November 2018



Historic “fence”, gate, archway, and pendant lantern fixture at Boathouse/Bandstand plaza, 2018



Concrete & brick “fence” at Boathouse/Bandstand plaza, 2018

Jamaica Pond Park Pathways & Entrances: Phase 2 Work

Jamaica Pond Park, Jamaica Plain

Description of Proposed Work

November 2018



Entry from Jamaicaway near the Boathouse & Bandstand, 2018



Existing (non-functioning) drinking fountain near the Boathouse, 2018

Jamaica Pond Park Pathways & Entrances: Phase 2 Work

Jamaica Pond Park, Jamaica Plain

Description of Proposed Work

November 2018



Typical condition of Jamaica Pond Park perimeter pathway near the Jamaica way, 2018



Typical condition of Jamaica Pond Park perimeter pathway below Perkins Street, 2018

Jamaica Pond Park Pathways & Entrances: Phase 2 Work

Jamaica Pond Park, Jamaica Plain

Description of Proposed Work

November 2018



Existing conditions of pathway with runners' path on both sides of the perimeter pathway below Pinebank Promontory, 2018



Existing conditions of pathway and slope along Perkins Street, 2018

Jamaica Pond Park Pathways & Entrances: Phase 2 Work

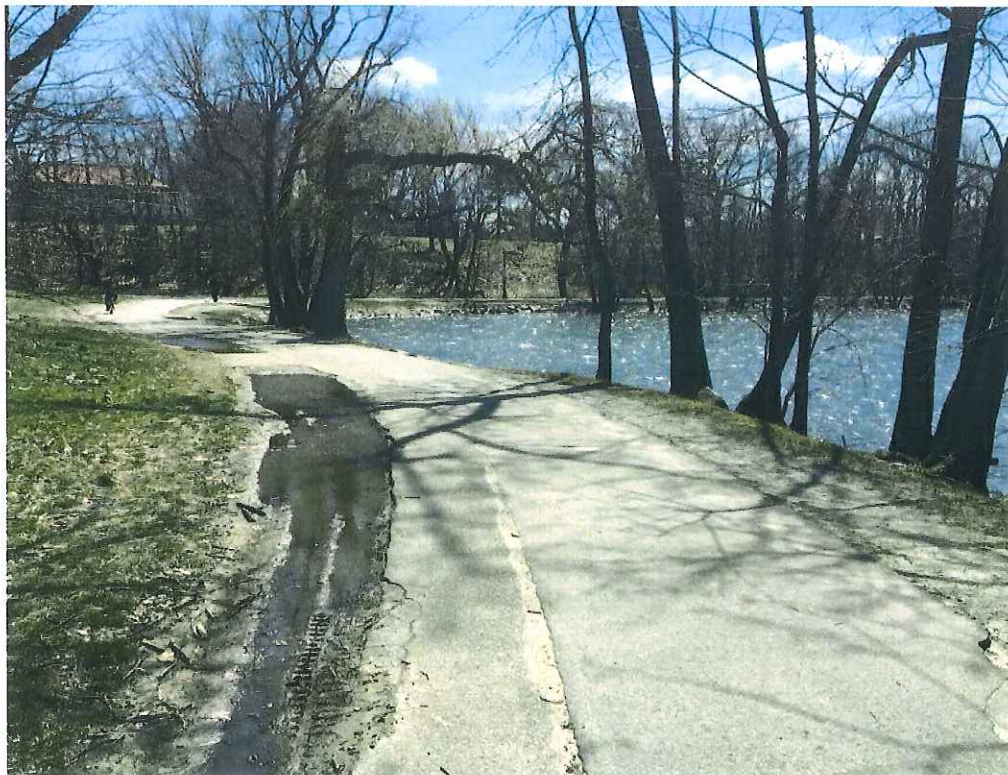
Jamaica Pond Park, Jamaica Plain

Description of Proposed Work

November 2018



Example of running path inside of vertical granite curb along perimeter pathway below Pinebank, 2018



Example of puddling & rutting on inside of perimeter pathway, below Pinebank, 2018

Jamaica Pond Park Pathways & Entrances: Phase 2 Work

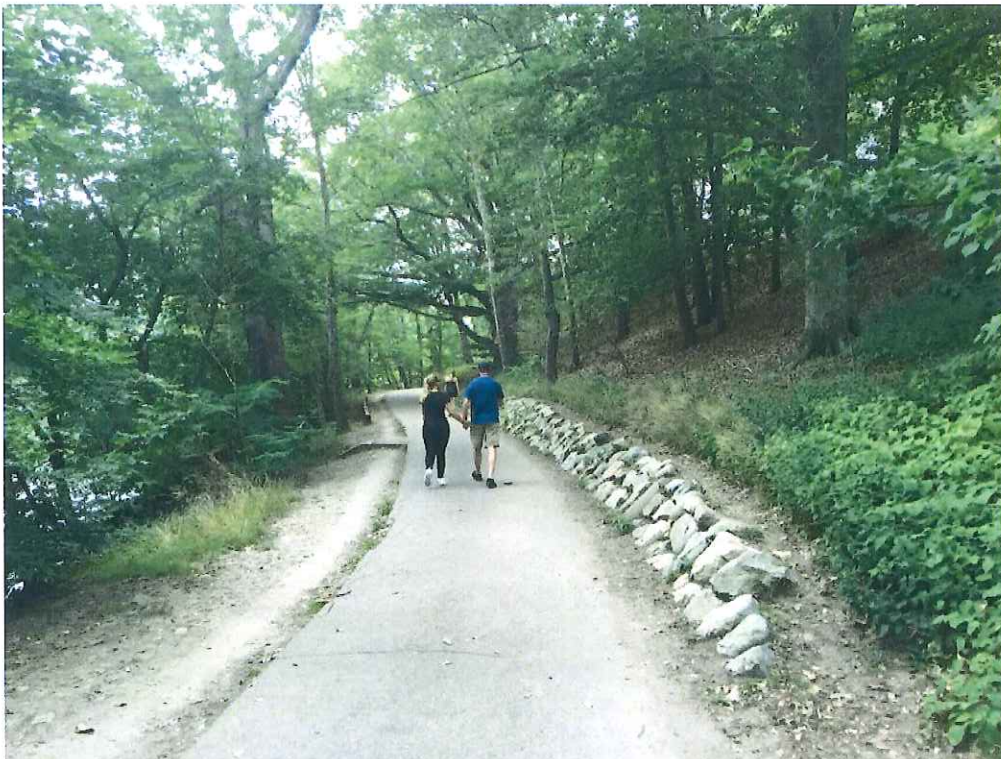
Jamaica Pond Park, Jamaica Plain

Description of Proposed Work

November 2018



Example of timber retaining wall along perimeter pathway below Perkins Street, 2018



Example of stone retaining wall along perimeter path below Perkins Street, 2018

Jamaica Pond Park Pathways & Entrances: Phase 2 Work

Jamaica Pond Park, Jamaica Plain

Description of Proposed Work

November 2018



Existing conditions of social trail along Francis Parkman Drive, 2018



Existing conditions of pathway near the William F. Kelley Circle, 2018

Jamaica Pond Park Pathways & Entrances: Phase 2 Work
Jamaica Pond Park, Jamaica Plain
Description of Proposed Work
November 2018



Perkins/Chestnut Streets entry, 2018



Approximate location of proposed bio-swale at pond edge near Perkins/Chestnut Streets entry, 2018

Jamaica Pond Park Pathways & Entrances: Phase 2 Work

Jamaica Pond Park, Jamaica Plain

Description of Proposed Work

November 2018



Example of cobblestone spillway below Perkins Street, 2018



Example of cobblestone swale running parallel to perimeter path along the Jamaicaway, 2018

Jamaica Pond Park Pathways & Entrances: Phase 2 Work
Jamaica Pond Park, Jamaica Plain
Description of Proposed Work
November 2018



Fallen trees on slope below Pinebank, 2018



Bare slope due to social trailing below Pinebank, 2018

Jamaica Pond Park Pathways & Entrances: Phase 2 Work

Jamaica Pond Park, Jamaica Plain

Description of Proposed Work

November 2018



Stairs near Jamaica Pond, 2018



Perkins Street stairs, 2018

Jamaica Pond Park Pathways & Entrances: Phase 2 Work
Jamaica Pond Park, Jamaica Plain
Description of Proposed Work
November 2018



Example pond bank & edge for vegetation restoration, 2018



Perkins/Chestnut Streets entry with social trail, 2018

Jamaica Pond Park Pathways & Entrances: Phase 2 Work
Jamaica Pond Park, Jamaica Plain
 Description of Proposed Work
 November 2018

EXISTING SITE PHOTOS
SIGNAGE



Existing historical identification & park rules signs

Jamaica Pond Park Pathways & Entrances: Phase 2 Work
Jamaica Pond Park, Jamaica Plain
Description of Proposed Work
November 2018



Rules signage: no bikes allowed



Rules signage: no bikes allowed

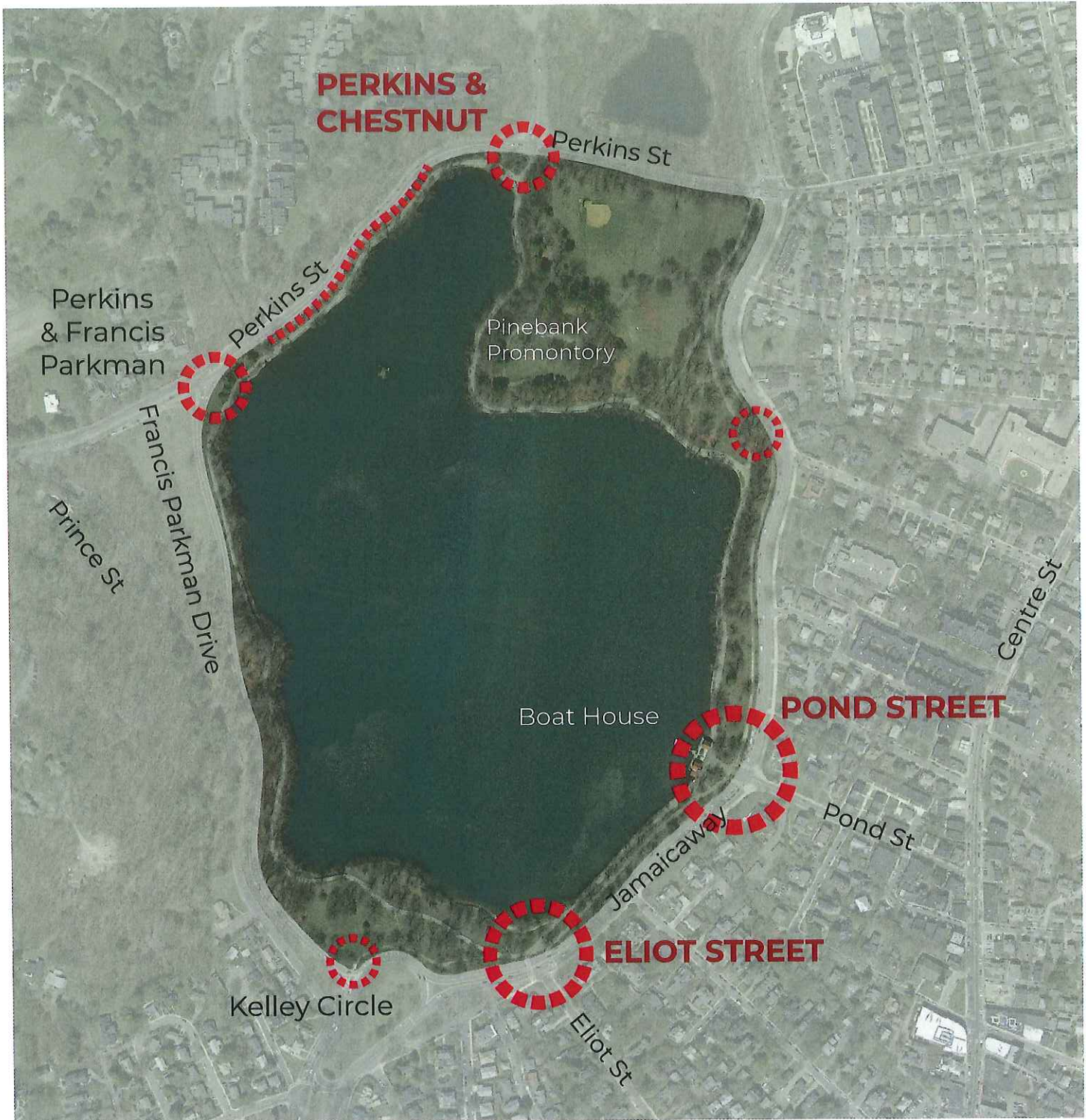
Jamaica Pond Park Pathways & Entrances: Phase 2 Work
Jamaica Pond Park, Jamaica Plain
Description of Proposed Work
November 2018

PROPOSED PERIMETER PATHWAY & RUNNERS' PATH



Jamaica Pond Park Pathways & Entrances: Phase 2 Work
Jamaica Pond Park, Jamaica Plain
Description of Proposed Work
November 2018

PARK ENTRANCES



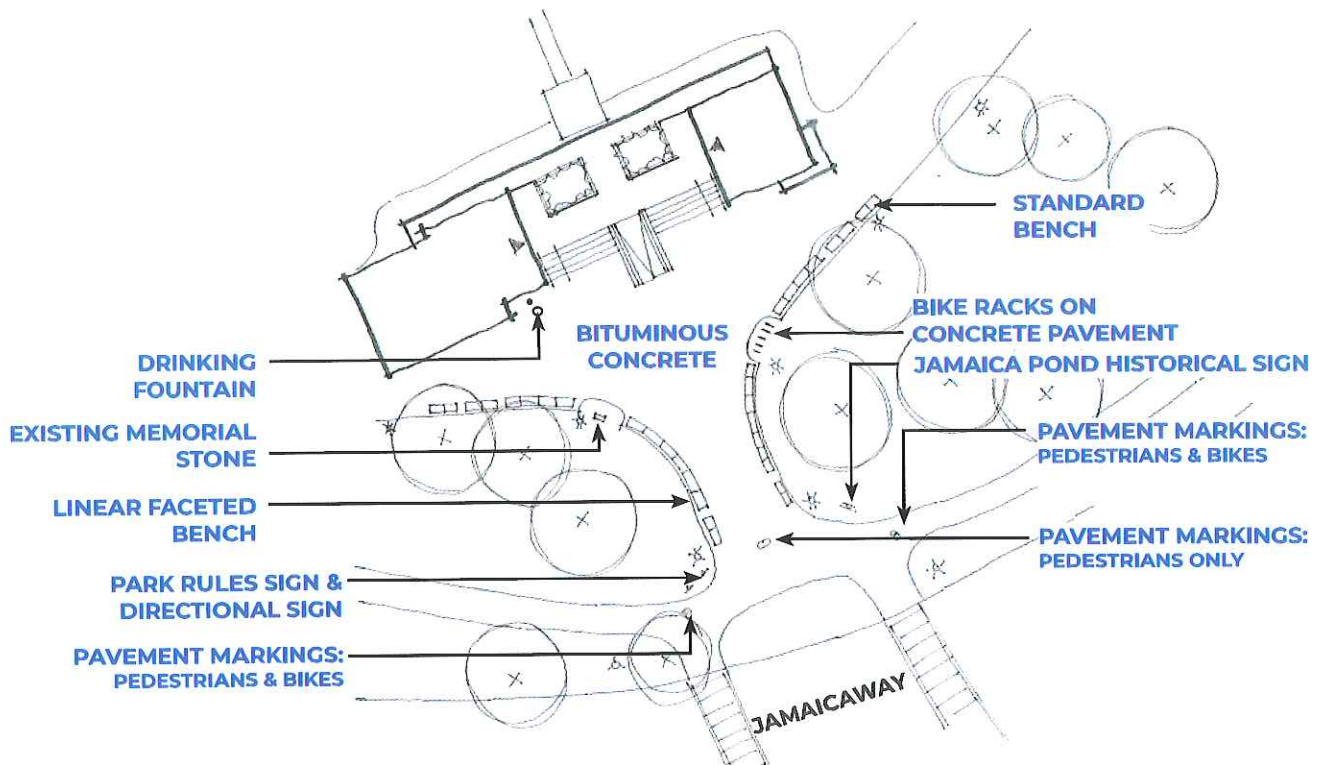
Jamaica Pond Park Pathways & Entrances: Phase 2 Work

Jamaica Pond Park, Jamaica Plain

Description of Proposed Work

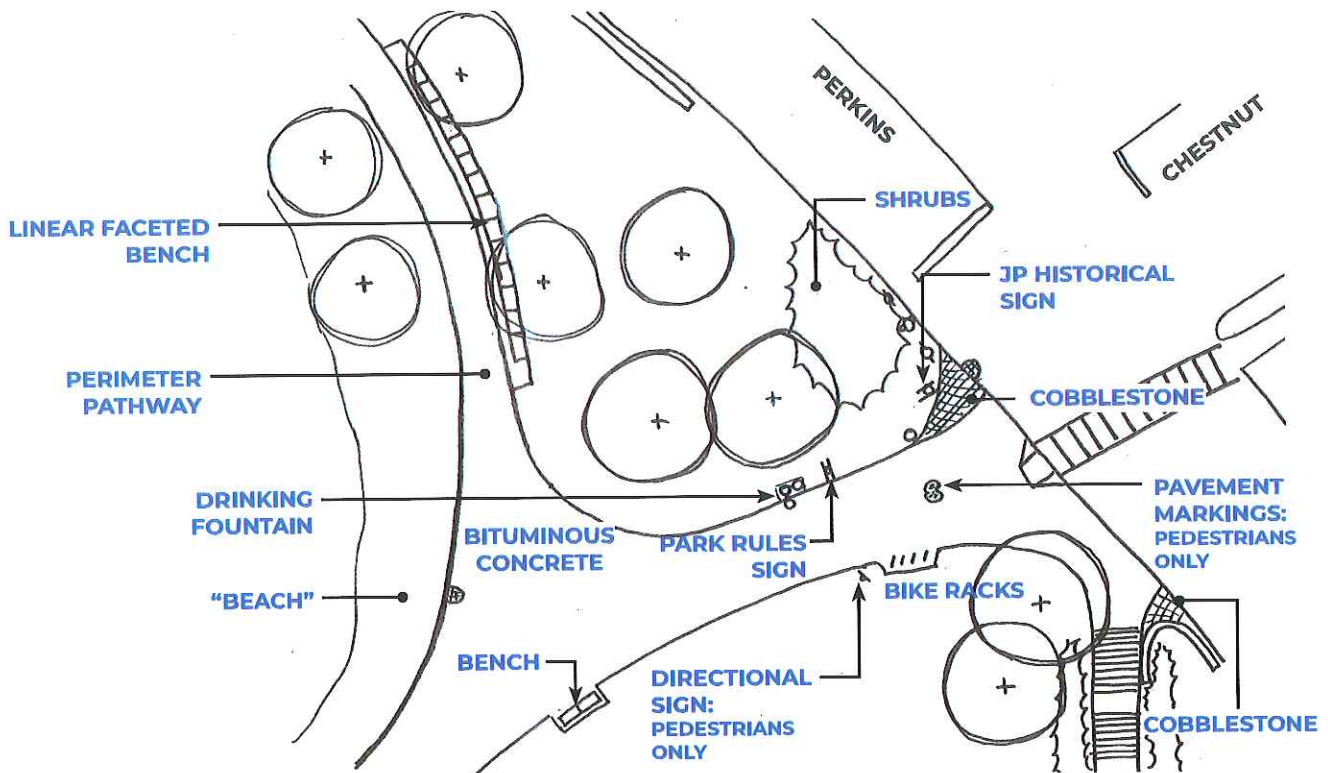
November 2018

PARK ENTRANCES: JAMAICAWAY/POND STREET



Jamaica Pond Park Pathways & Entrances: Phase 2 Work
Jamaica Pond Park, Jamaica Plain
Description of Proposed Work
November 2018

PARK ENTRANCES: CHESTNUT/PERKINS STREETS



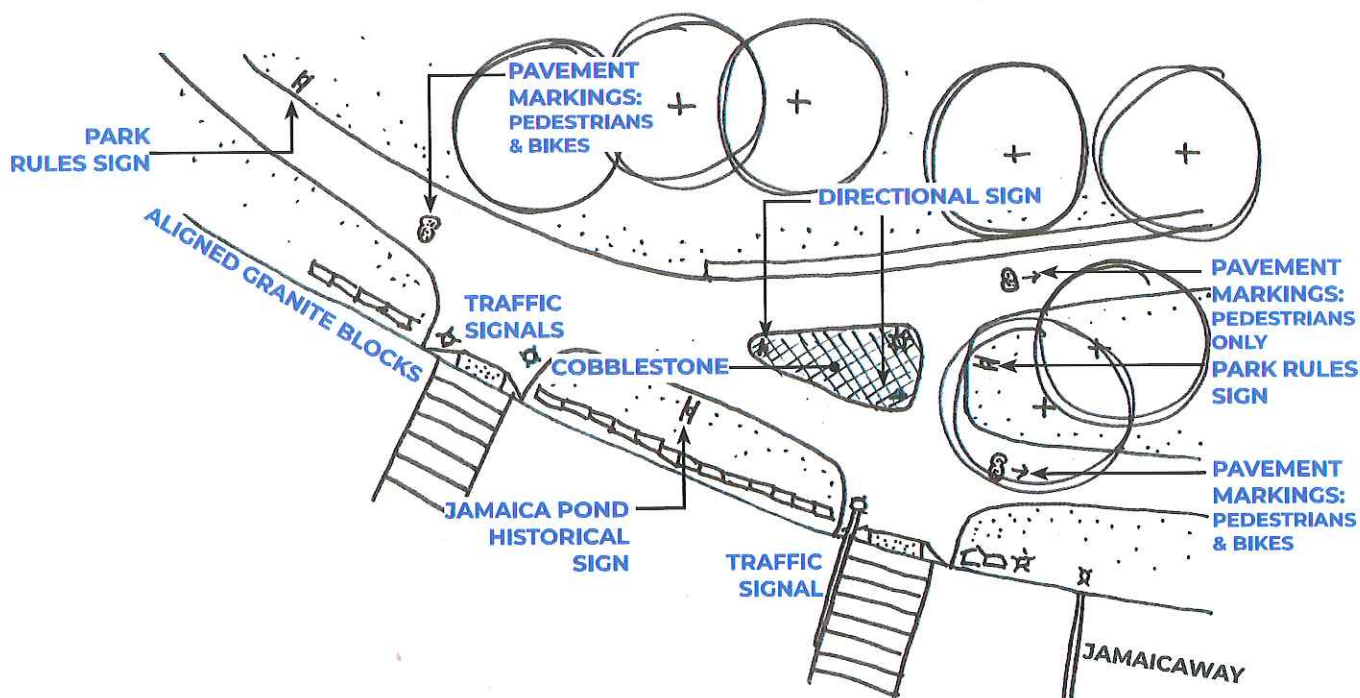
Jamaica Pond Park Pathways & Entrances: Phase 2 Work

Jamaica Pond Park, Jamaica Plain

Description of Proposed Work

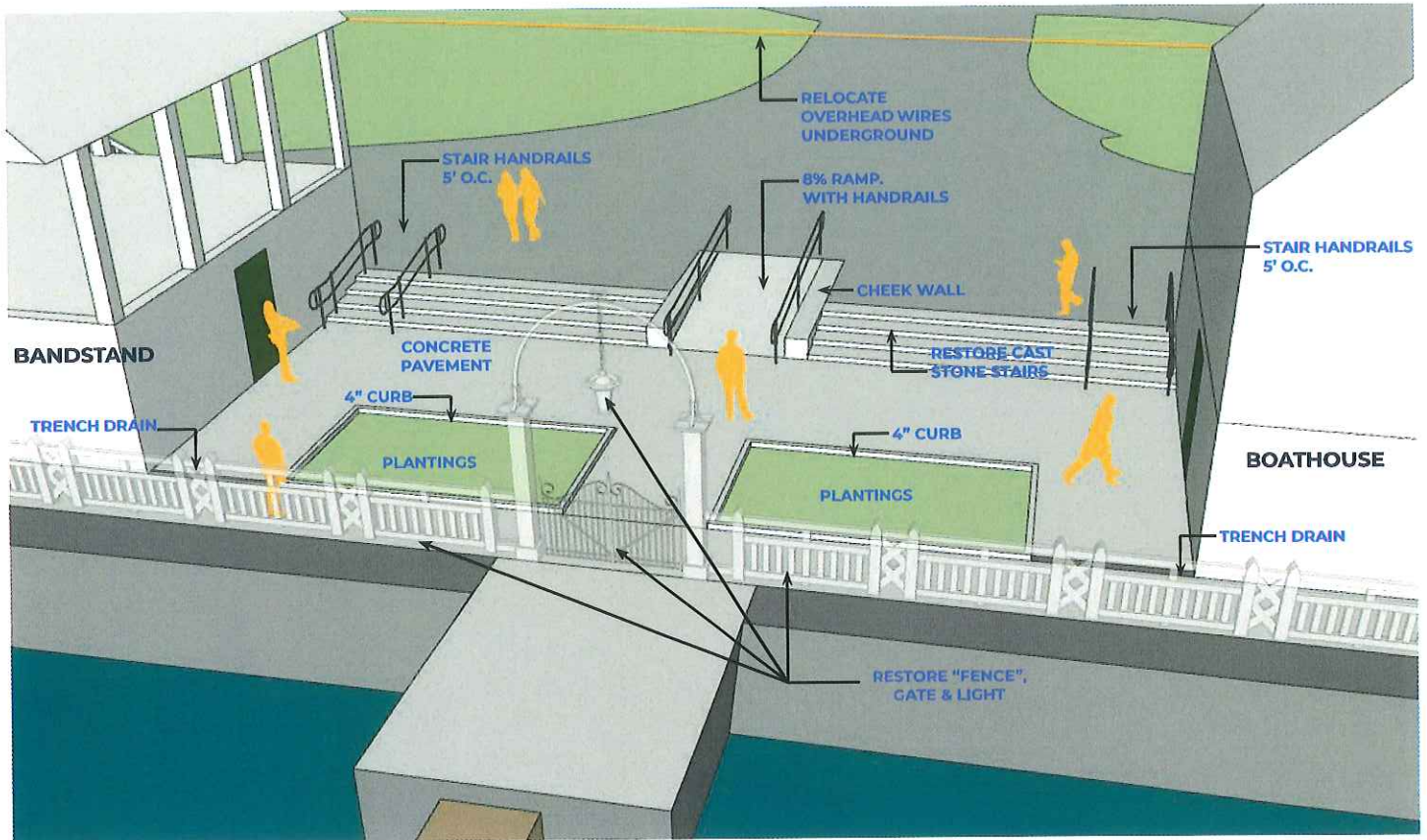
November 2018

PARK ENTRANCES: JAMAICAWAY/ELIOT STREET



Jamaica Pond Park Pathways & Entrances: Phase 2 Work
Jamaica Pond Park, Jamaica Plain
Description of Proposed Work
November 2018

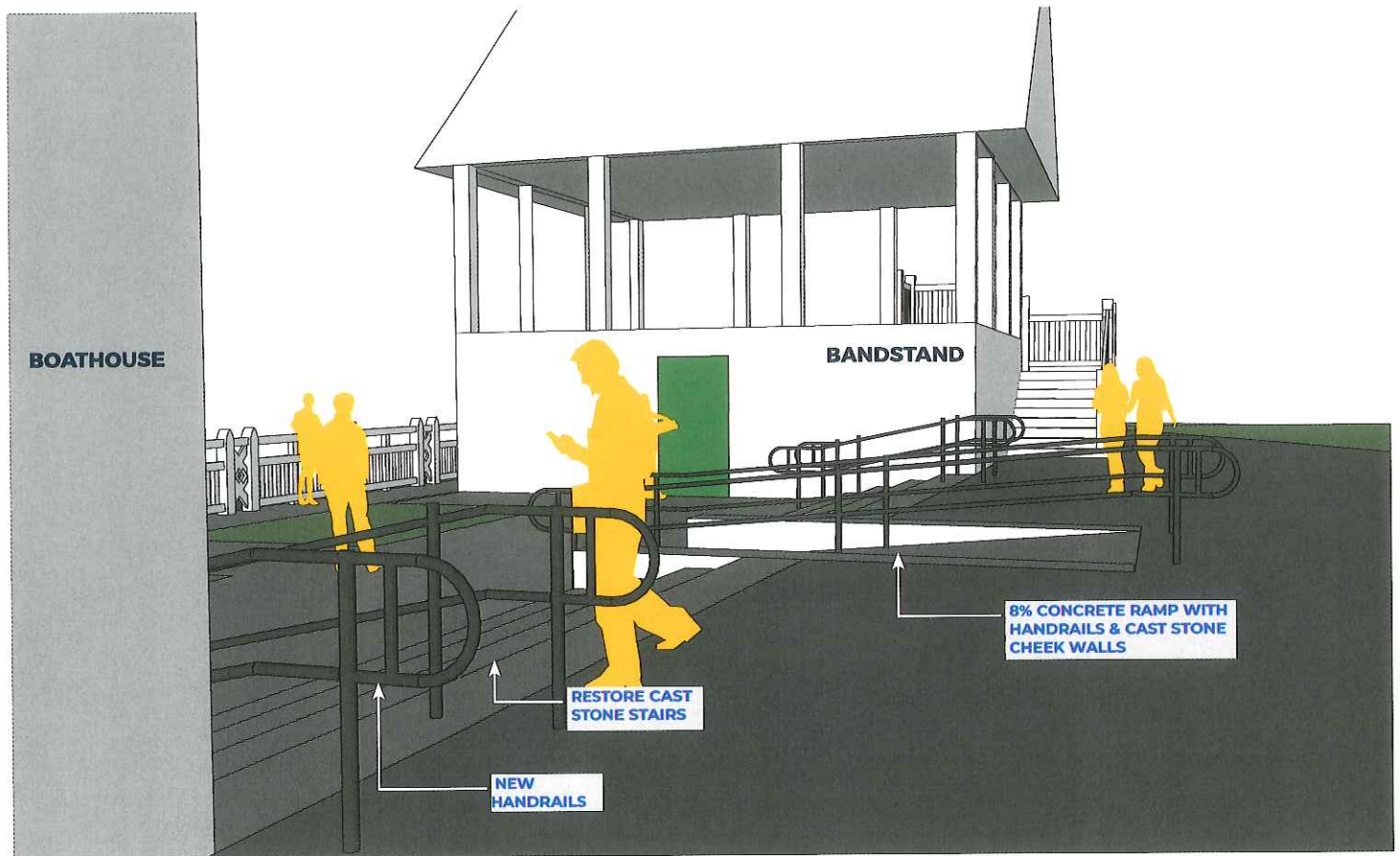
BOATHOUSE/BANDSTAND PLAZA



Birds' eye view from over Jamaica Pond of rehabilitated Boathouse/Bandstand plaza

Jamaica Pond Park Pathways & Entrances: Phase 2 Work
Jamaica Pond Park, Jamaica Plain
Description of Proposed Work
November 2018

BOATHOUSE/BANDSTAND PLAZA



View of rehabilitated Boathouse/Bandstand plaza from adjacent to the Boathouse and restrooms

Jamaica Pond Park Pathways & Entrances: Phase 2 Work

Jamaica Pond Park, Jamaica Plain

Description of Proposed Work

November 2018

STAIRWAYS



Jamaica Pond Park Pathways & Entrances: Phase 2 Work

Jamaica Pond Park, Jamaica Plain

Description of Proposed Work

November 2018

STAIRWAYS: POND STAIRS



CONCERNS:

- Stone dust pathway at top of stair is eroding onto stairs
- Treads have settled/shifted over time
- Uneven stair treads have encouraged social trails to form on the southern slope
- Armored swale is unsightly and not original to the site

DESIGN SOLUTIONS:

- Reset existing granite treads
- Manage stormwater above stairs to limit erosion on the sides
- Plant vegetation on the edges to reduce the creation of social trails
- Add handrails

Jamaica Pond Park Pathways & Entrances: Phase 2 Work

Jamaica Pond Park, Jamaica Plain

Description of Proposed Work

November 2018

STAIRWAYS: POND STAIRS



View of rehabilitated pond stairs with shrub plantings and handrails

Jamaica Pond Park Pathways & Entrances: Phase 2 Work

Jamaica Pond Park, Jamaica Plain

Description of Proposed Work

November 2018

STAIRWAYS: PERKINS STREET



CONCERNS:

- Pathway at top of stair well above ADA allowed gradient
- Treads have settled/shifted over time
- Riser/tread relationship is relatively steep
- Uneven stair treads have encouraged social trails to form on the edges
- Stormwater flows down the sides of the stairs

DESIGN SOLUTIONS:

- Reset existing granite treads
- Plant vegetation on the edges to reduce the creation of social trails
- Add treads to the top of existing stairs to ease steep slope to bring into MAAB compliance
- Add handrails

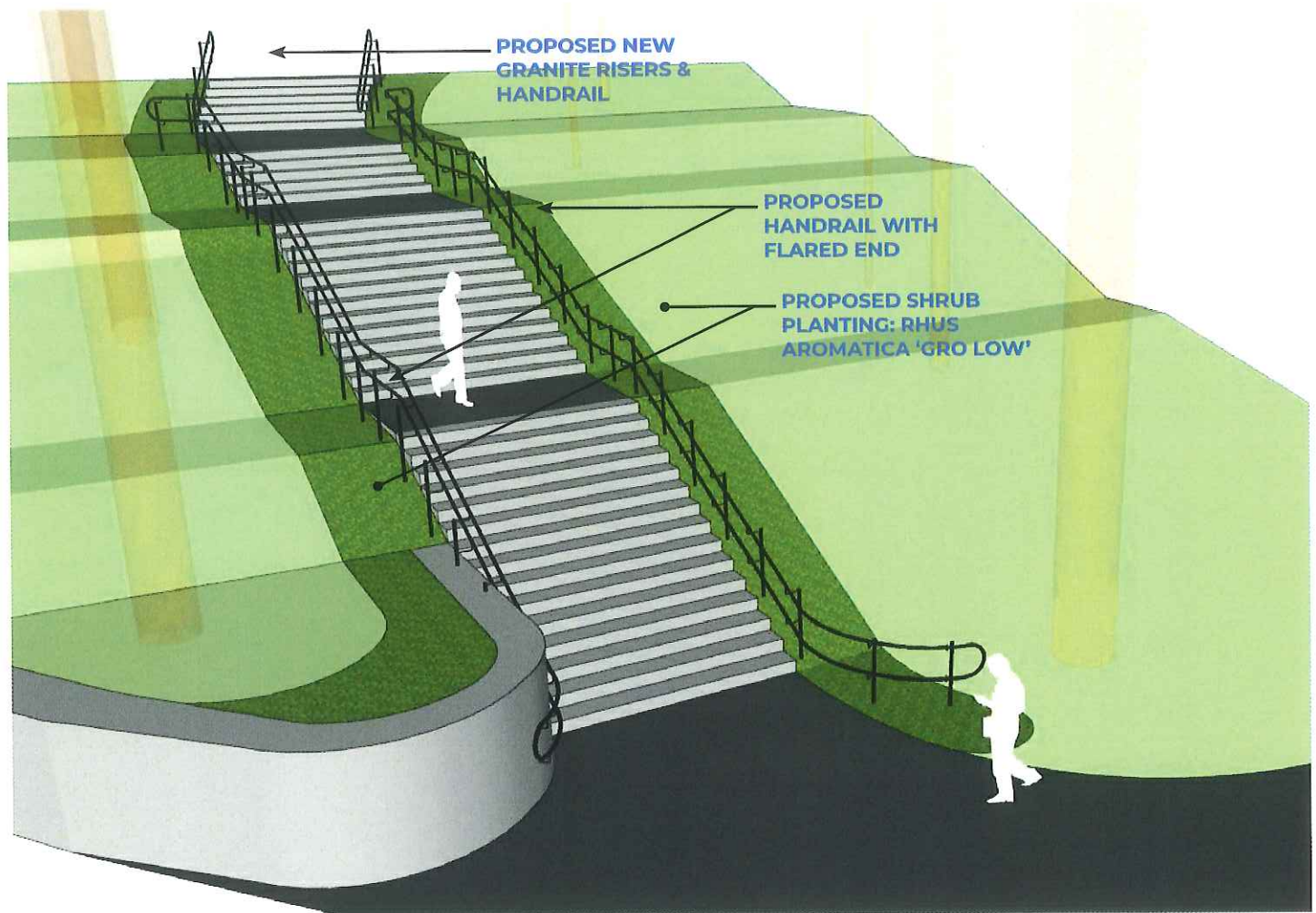
Jamaica Pond Park Pathways & Entrances: Phase 2 Work

Jamaica Pond Park, Jamaica Plain

Description of Proposed Work

November 2018

STAIRWAYS: PERKINS STREET



View of rehabilitated Perkins Street stairs with additional risers at the top, shrub plantings and handrails

Jamaica Pond Park Pathways & Entrances: Phase 2 Work

Jamaica Pond Park, Jamaica Plain

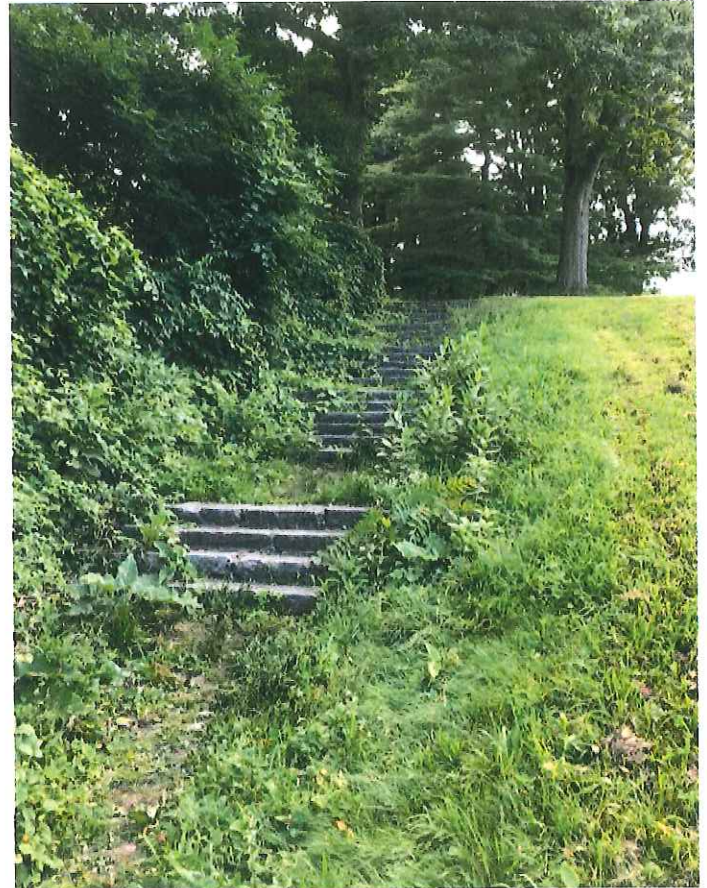
Description of Proposed Work

November 2018

STAIRWAYS: PUDDINGSTONE



Existing conditions (May)



Existing conditions (August)

CONCERNS:

- Stairs do not connect to an established path
- Treads have settled/shifted over time

DESIGN SOLUTIONS:

- Replace bituminous concrete landings
- Reset granite treads
- Maintain stairs as a historic remnant

Jamaica Pond Park Pathways & Entrances: Phase 2 Work
Jamaica Pond Park, Jamaica Plain
Description of Proposed Work
November 2018

STAIRWAYS: HANCOCK STAIRS AT PINEBANK



CONCERNS:

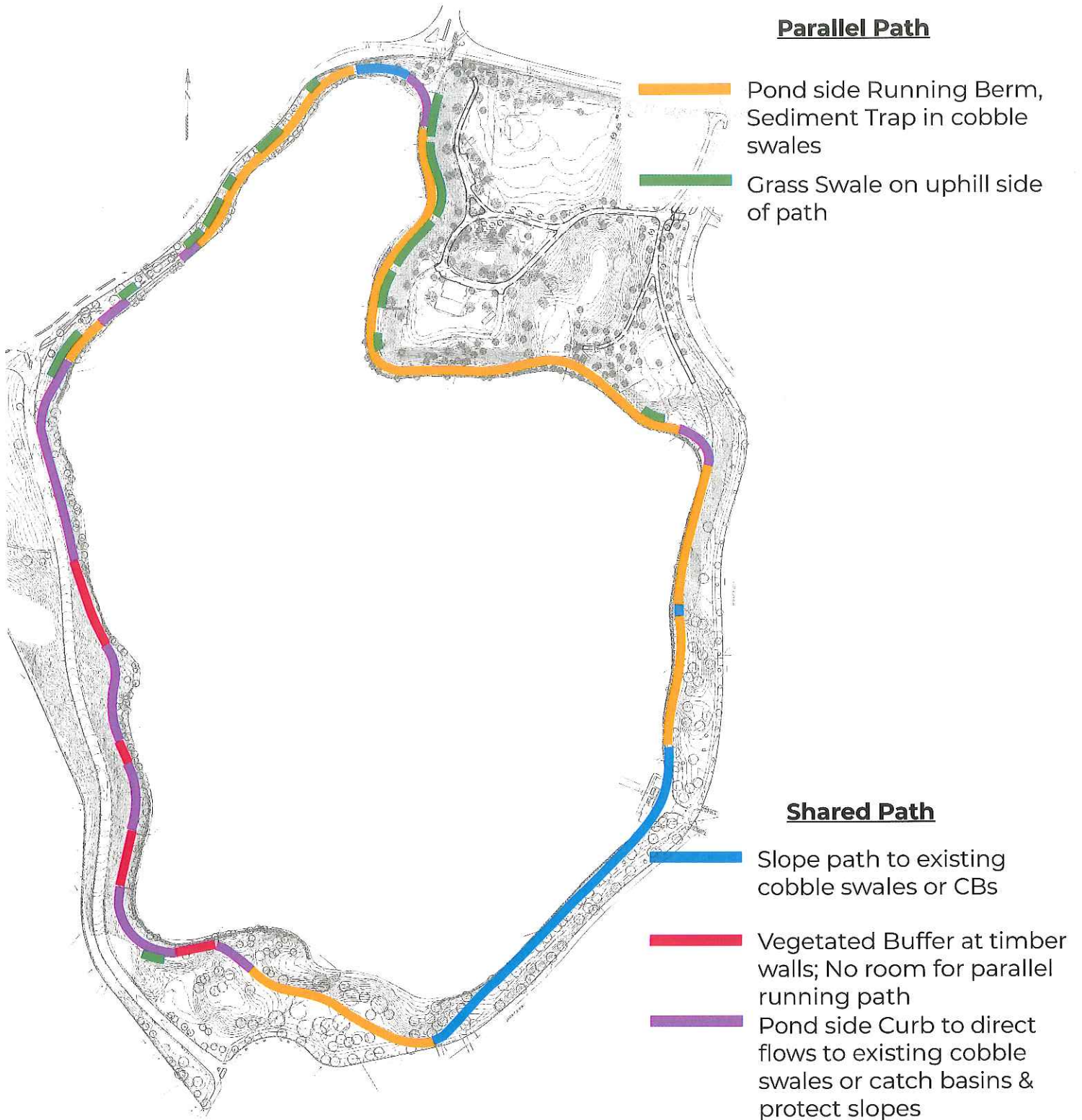
- Select stair treads rock

DESIGN SOLUTION:

- Shim unstable treads

Jamaica Pond Park Pathways & Entrances: Phase 2 Work
Jamaica Pond Park, Jamaica Plain
Description of Proposed Work
November 2018

STORMWATER MANAGEMENT ALONG PERIMETER PATH



Jamaica Pond Park Pathways & Entrances: Phase 2 Work
Jamaica Pond Park, Jamaica Plain
Description of Proposed Work
November 2018

STORMWATER MANAGEMENT

-  GRASS SWALE
-  RUNNER'S BERM
-  HARDENED EDGE
-  TIMBER WALL (EXISTING)
-  BIO-RETENTION/SAND FILTER
-  COBBLESTONE SPILLWAY (EXISTING)
-  COBBLESTONE SPILLWAY (PROPOSED)
-  RECHARGE BASIN
-  RAIN GARDENS



Proposed stormwater management interventions

Jamaica Pond Park Pathways & Entrances: Phase 2 Work

Jamaica Pond Park, Jamaica Plain

Description of Proposed Work

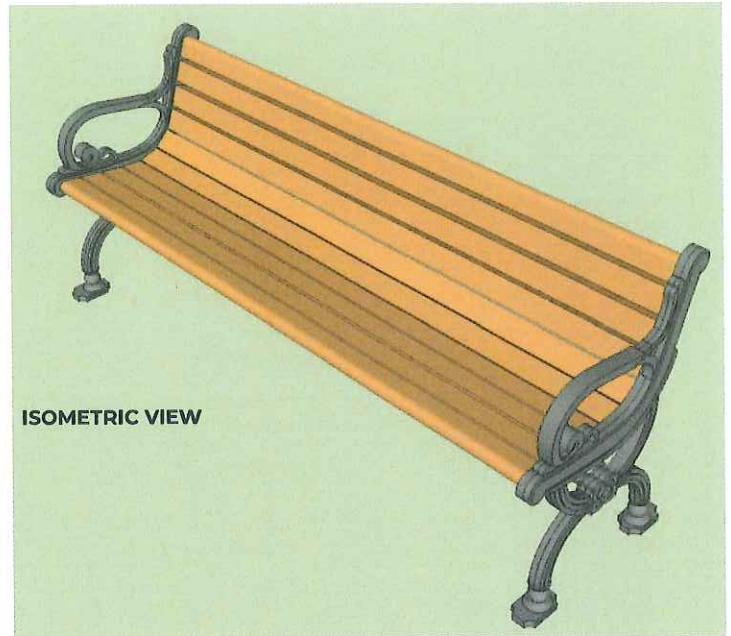
November 2018

SITE AMENITIES: BENCHES

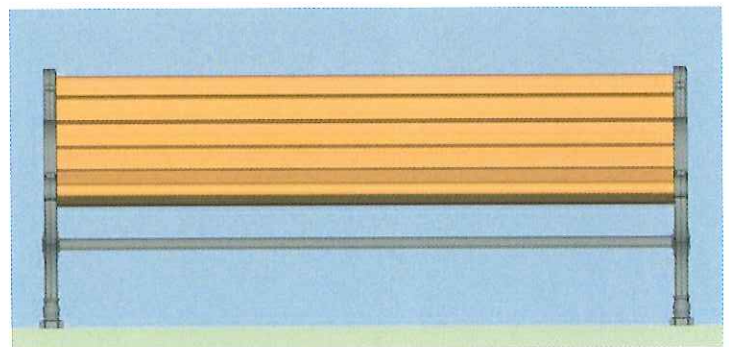


Emerald Necklace bench at Jamaica pond

Custom stanchion based on the late 20th century bench design



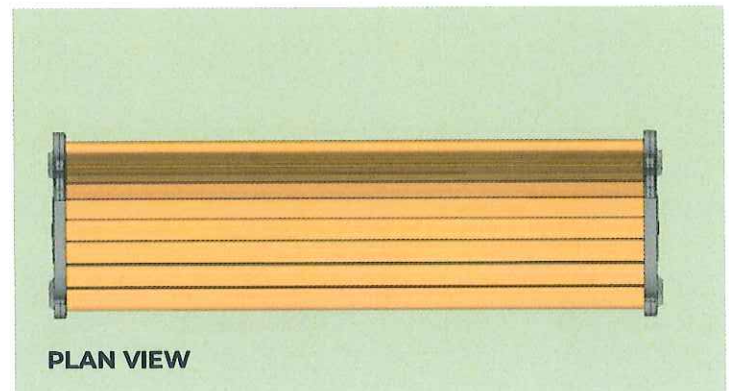
ISOMETRIC VIEW



FRONT ELEVATION



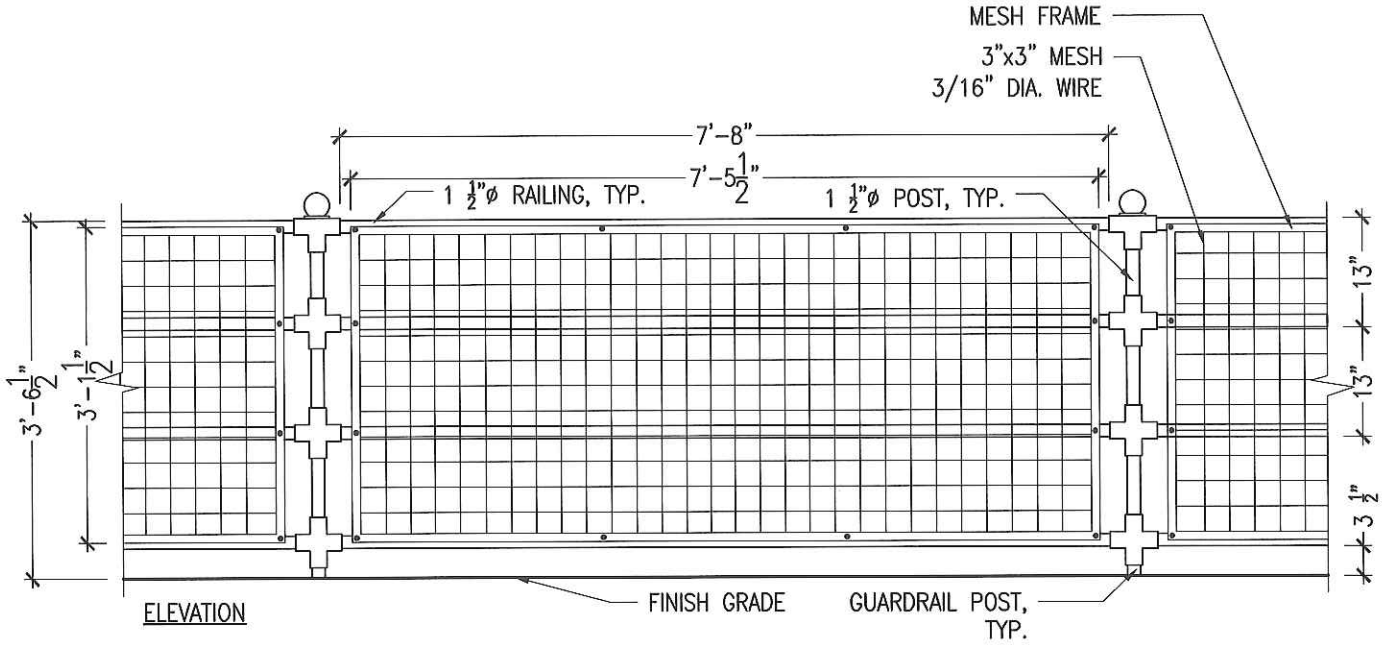
SIDE ELEVATION



PLAN VIEW

Jamaica Pond Park Pathways & Entrances: Phase 2 Work
Jamaica Pond Park, Jamaica Plain
Description of Proposed Work
November 2018

SITE AMENITIES: GUARDRAIL



Standard Guardrail

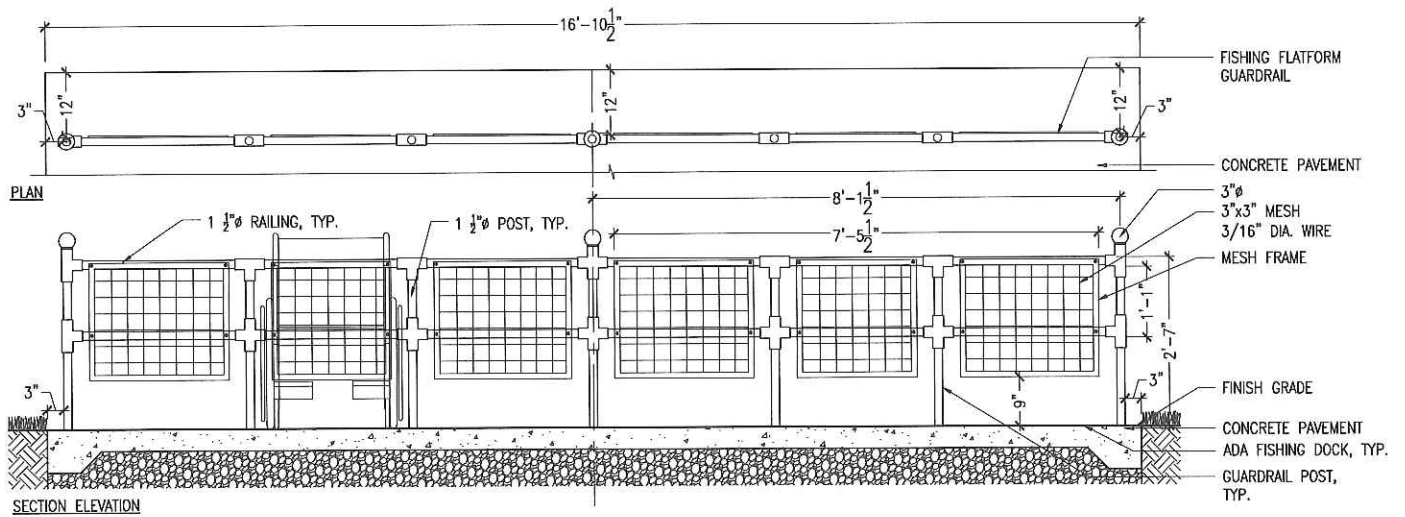
Jamaica Pond Park Pathways & Entrances: Phase 2 Work

Jamaica Pond Park, Jamaica Plain

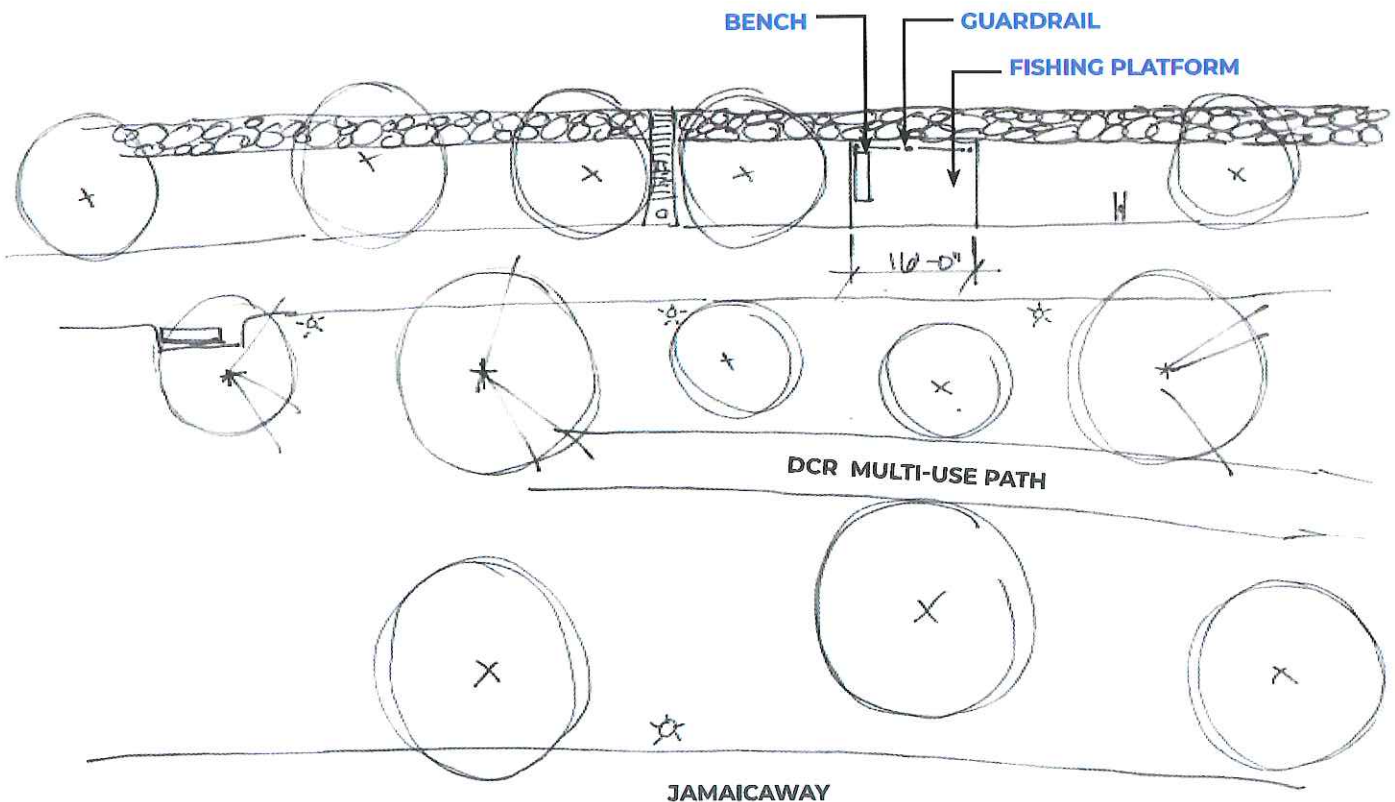
Description of Proposed Work

November 2018

SITE AMENITIES: FISHING PLATFORM



Fishing Platform Guardrail

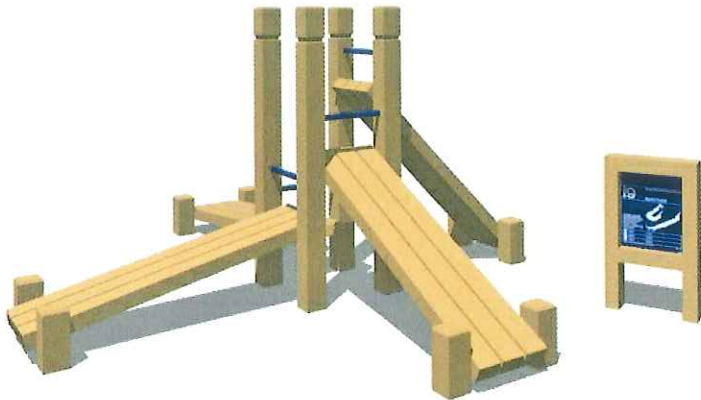


Fishing Platform Plan View

Jamaica Pond Park Pathways & Entrances: Phase 2 Work
Jamaica Pond Park, Jamaica Plain
Description of Proposed Work
November 2018

SITE AMENITIES: FITNESS EQUIPMENT & SIGNAGE

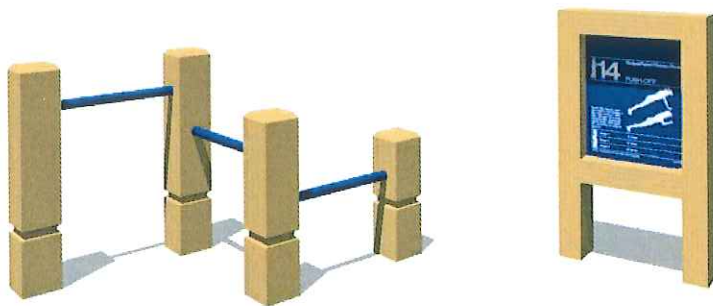
Note: Signage shall have white text on black background.



Sit-up station & signage



Sit-up station & signage

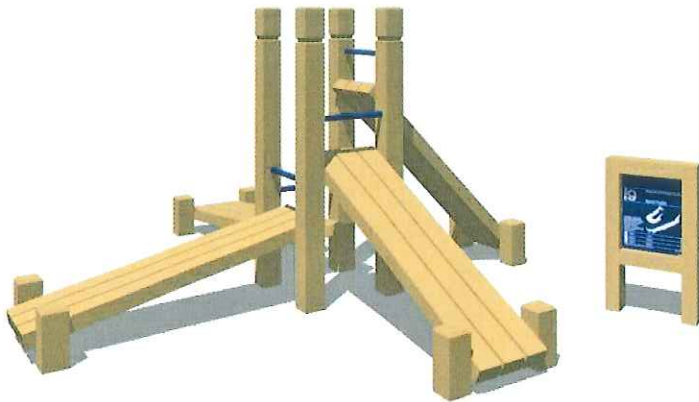


Pull-up station & signage

Jamaica Pond Park Pathways & Entrances: Phase 2 Work
Jamaica Pond Park, Jamaica Plain
Description of Proposed Work
November 2018

SITE AMENITIES: FITNESS EQUIPMENT & SIGNAGE

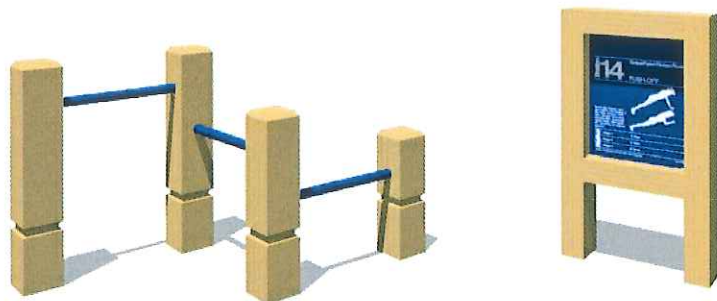
Note: Signage shall have white text on black background.



Sit-up station & signage



Sit-up station & signage



Pull-up station & signage

Jamaica Pond Park Pathways & Entrances: Phase 2 Work
Jamaica Pond Park, Jamaica Plain
Description of Proposed Work
November 2018

SITE AMENITIES: POROUS FLEXIBLE PAVING FOR FITNESS EQUIPMENT

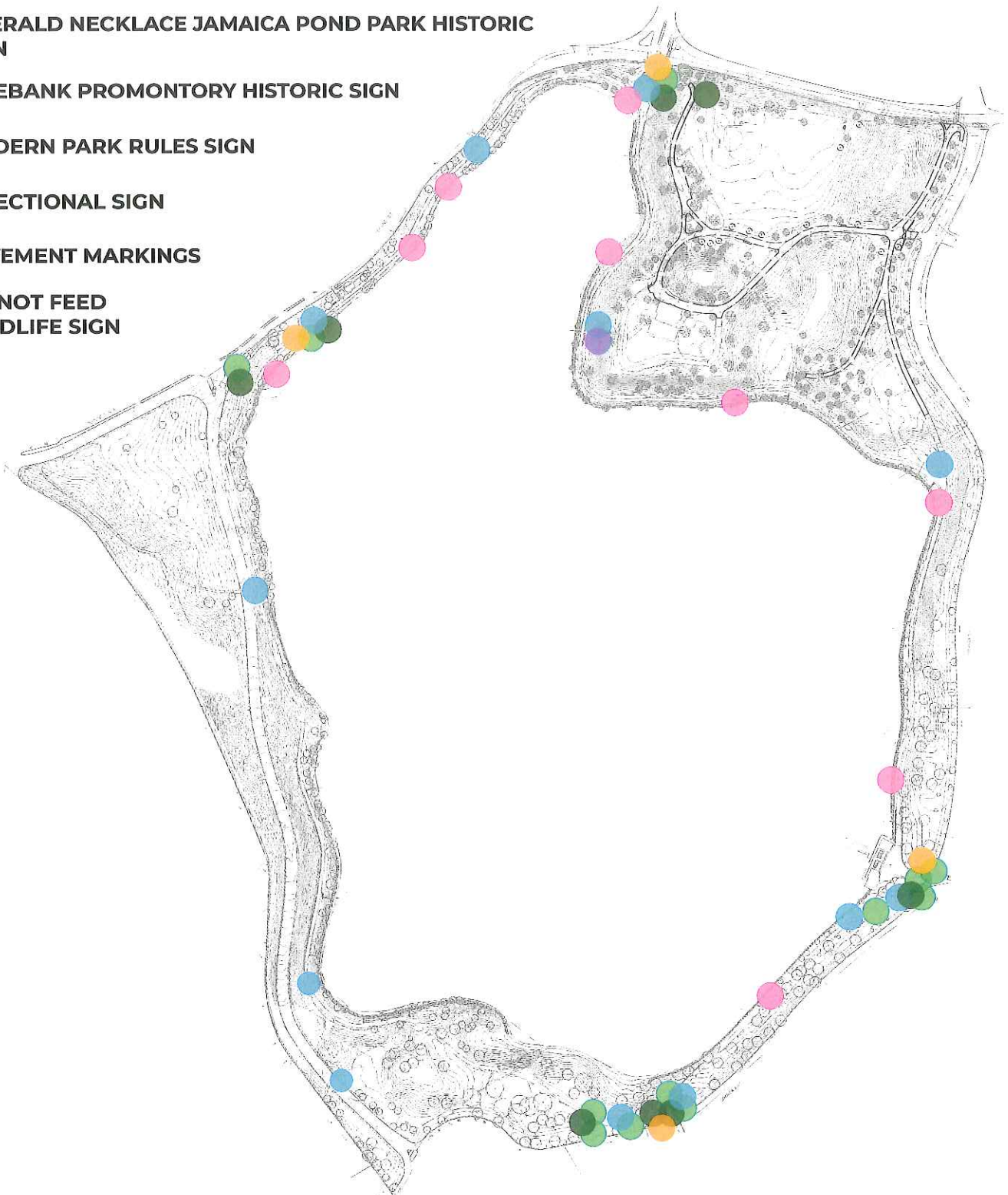


Sample Porous flexible paving for fitness equipment

Jamaica Pond Park Pathways & Entrances: Phase 2 Work
Jamaica Pond Park, Jamaica Plain
Description of Proposed Work
November 2018

SITE AMENITIES: SIGNAGE

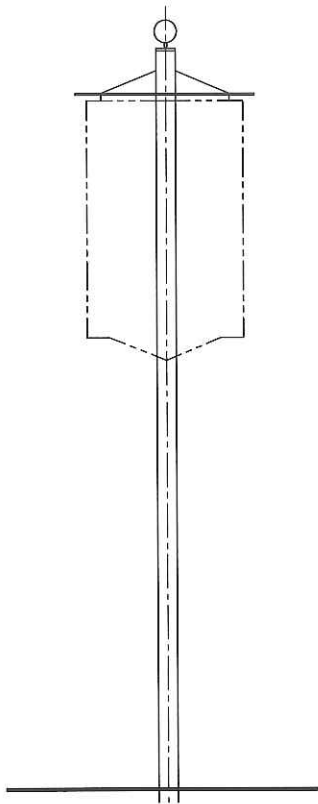
-  EMERALD NECKLACE JAMAICA POND PARK HISTORIC SIGN
-  PINEBANK PROMONTORY HISTORIC SIGN
-  MODERN PARK RULES SIGN
-  DIRECTIONAL SIGN
-  PAVEMENT MARKINGS
-  DO NOT FEED WILDLIFE SIGN



Proposed sign locations

Jamaica Pond Park Pathways & Entrances: Phase 2 Work
Jamaica Pond Park, Jamaica Plain
 Description of Proposed Work
 November 2018

SITE AMENITIES: SIGNAGE



EMERALD NECKLACE
JAMAICA POND
 A DESIGNATED BOSTON LANDMARK
 ESTABLISHED
1892

VISITORS PLEASE TAKE NOTICE

Please use trash barrels
No motorized vehicles
No alcoholic beverages
Dogs on leash only
Permit required for organized events
Park hours- dawn to dusk
No smoking- \$250.00 fine

Police take notice: per order of the Boston Parks Commission to report vandalism or dangerous conditions call 311.

JAMAICA POND
 A DESIGNATED BOSTON LANDMARK

VISITORS PLEASE TAKE NOTICE

Park hours- dawn to dusk
No alcoholic beverages
Dogs must be leashed
Pick up after your dog
No bicycling on pedestrian path
No private boating
No swimming or wading
No ice skating
Authorized vehicles only

All violations may be punishable by \$50 fine per occurrence.
 Per order of Parks Commission

Police take notice: per order of the Boston Parks Commission to report vandalism or dangerous conditions call 311.

Jamaica Pond Historical Sign

BOSTON PARKS & RECREATION

Enjoy Your Park
 Visitors Please Take Notice

- Park closes at dusk unless otherwise posted
- No alcoholic beverages
- No vehicular access
- No skateboarding, rollerskating or bicycling
- Dogs on leashes only
- Clean up after your dog

NO SMOKING - \$250.00 FINE

Park users are subject to the rules and regulations of the Boston Parks Commission.
 For disputes regarding this park, please call 311.
 In case of emergency, please call 911.

BOSTON PARKS & RECREATION

Disfruta Tu Parque
 Visitantes, atención por favor

Este parque cierra al atardecer a menos que se indique lo contrario.
Prohibido el consumo de bebidas alcohólicas.
Prohibido el uso de vehículos de motor.
Prohibido el uso de patineta, patines, o bicicletas.
Perros sujetos con collar y correa solamente.
Favor de limpiar el excremento de su perro.

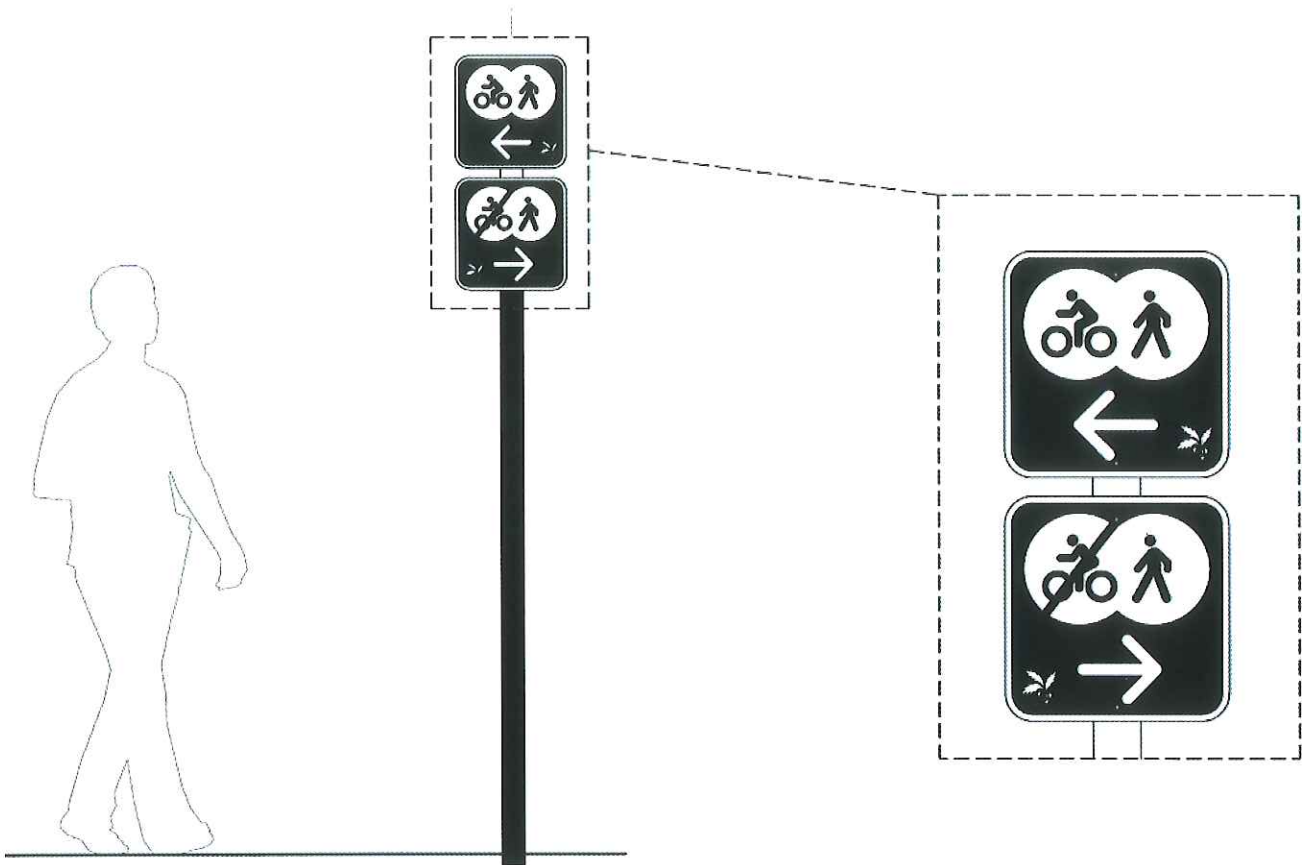
NO FUMAR - \$250.00 MULTA

Parque usuarios están sujetos a las reglas y regulaciones de la Comisión de Parques de Boston.
 Para disputas relacionadas con este parque, por favor llame al 311.
 Para el caso de una emergencia, por favor llame 911.

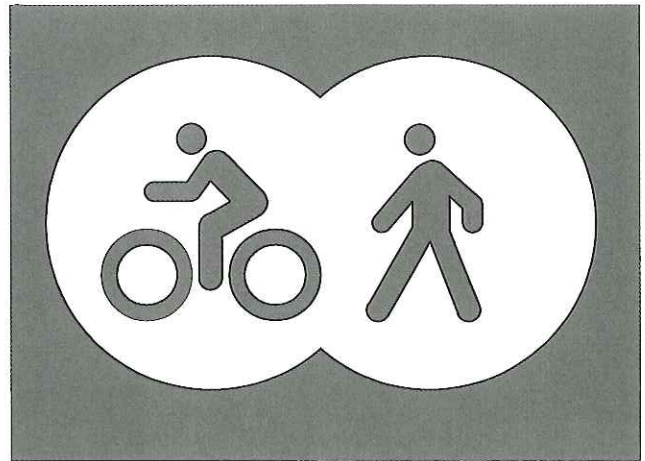
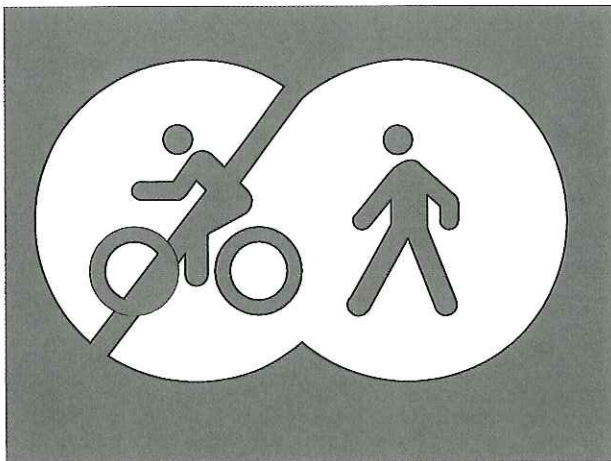
Park Rules Sign: English & Spanish

Jamaica Pond Park Pathways & Entrances: Phase 2 Work
Jamaica Pond Park, Jamaica Plain
Description of Proposed Work
November 2018

SITE AMENITIES: SIGNAGE



Directional Signs



Pavement Markings

Jamaica Pond Park Pathways & Entrances: Phase 2 Work
Jamaica Pond Park, Jamaica Plain
Description of Proposed Work
November 2018

SITE AMENITIES: SIGNAGE



SUBSTRATE: Aluminum .080"
SIZE: 12" x 18"
COLOR: White
SIDES: 1

COPY: Screenprinted
FONT: Footlight MT
COLORS: Black
CORNER DETAIL: Radius
BACKING: N/A



SUBSTRATE: Aluminum .080"
SIZE: 12" x 18"
COLOR: White
SIDES: 1

COPY: Screenprinted
FONT: Footlight MT
COLORS: Black
CORNER DETAIL: Radius
BACKING: N/A

New rules signs

Jamaica Pond Park Pathways & Entrances: Phase 2 Work
Jamaica Pond Park, Jamaica Plain
Description of Proposed Work
November 2018

VEGETATION MANAGEMENT

Primary Targets for Removal ■

- Knotweed
- Tree-of-heaven
- Norway maple
- Black locust
- Bittersweet
- Buckthorn
- Multiflora rose

Vegetation Restoration □

- Areas degraded from erosion or foot traffic
- Path edges
- Areas of fallen trees



Jamaica Pond Park Pathways & Entrances: Phase 2 Work

Jamaica Pond Park, Jamaica Plain

Description of Proposed Work

November 2018

PLANT ESTABLISHMENT FENCE



Example plant establishment fence

Jamaica Pond Park Pathways & Entrances: Phase 2 Work
Jamaica Pond Park, Jamaica Plain
 Description of Proposed Work
 November 2018

DECOMPACTION PLAN

-  **Vertical mulching**
-  **Drilling radishes**
-  **Air spading**
-  **Freeze/thaw cycle**
-  **Tree to be removed**

Vertical mulching = The Contractor to auger 6-inch diameter holes across the area shown at regular intervals spaced 4 feet on center. Holes shall be 18 inches deep.

Radish drilling = Radish seeds drilled in 7.5-inch rows and at a depth of 1/2 of an inch to 1 inch deep. Radish seeds shall be drilled at a rate of 6 pounds per acre within the row.

Air spading = Using a mechanical auger with a 4-inch bit, drill 18 inches deep holes at 24 inches on center. Stockpile excavated soil for reuse.

Freeze/thaw cycle = No mechanical intervention of soil shall be taken.

