

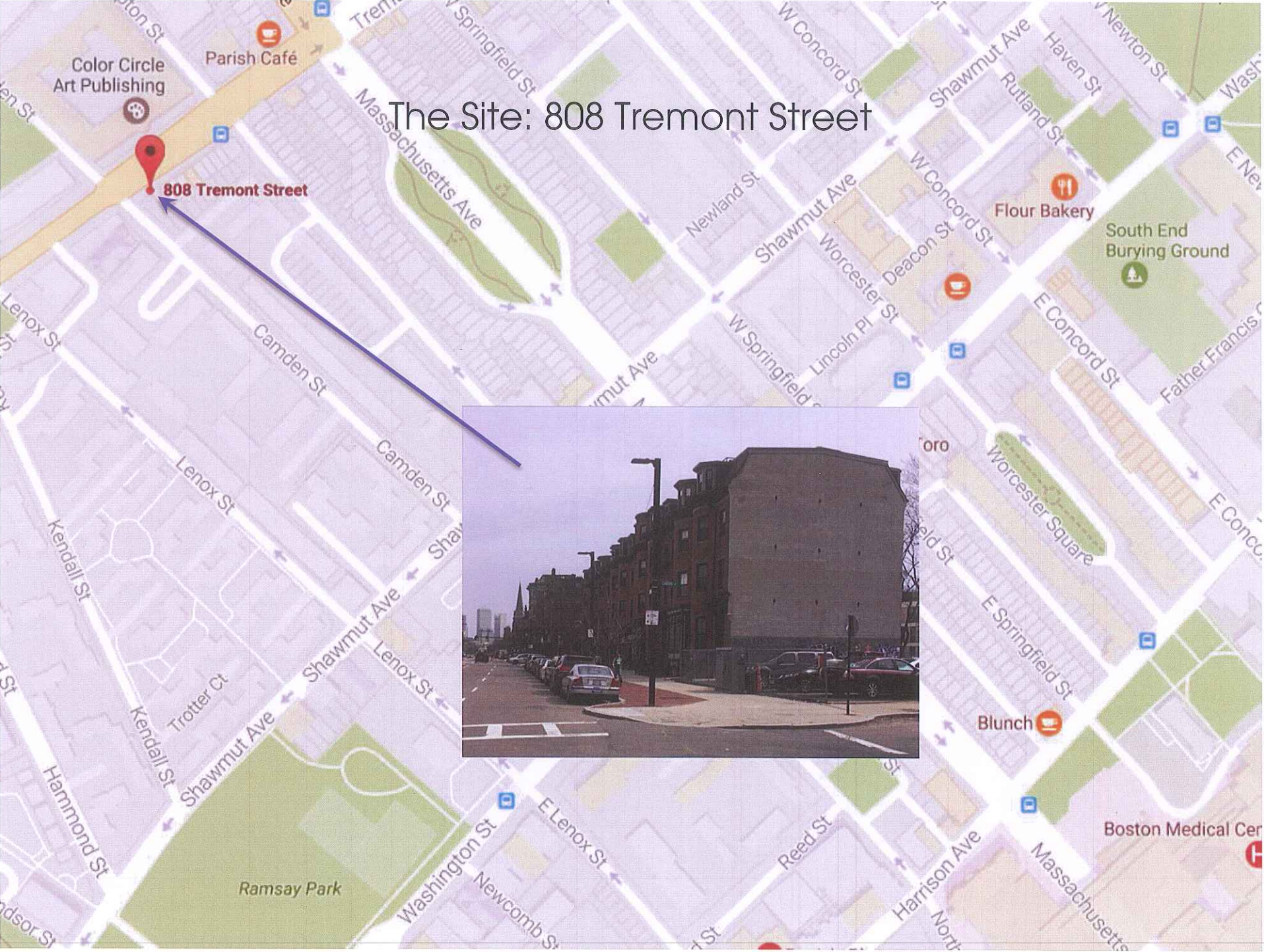
Breathe Life 3
a temporary mural
by Rob Gibbs

Boston Landmarks Application

South End Landmark District

Submitted March 22, 2019

The Site: 808 Tremont Street



Ownership



808 Tremont
HISTORIC SOUTH END LP

810 Tremont (parking lot)
PEOPLES BAPTIST
CHURCH INC

830 Tremont (church)
PEOPLES BAPTIST
CHURCH INC

NOW
✚THERE

The Project: *Breathe Life 3*



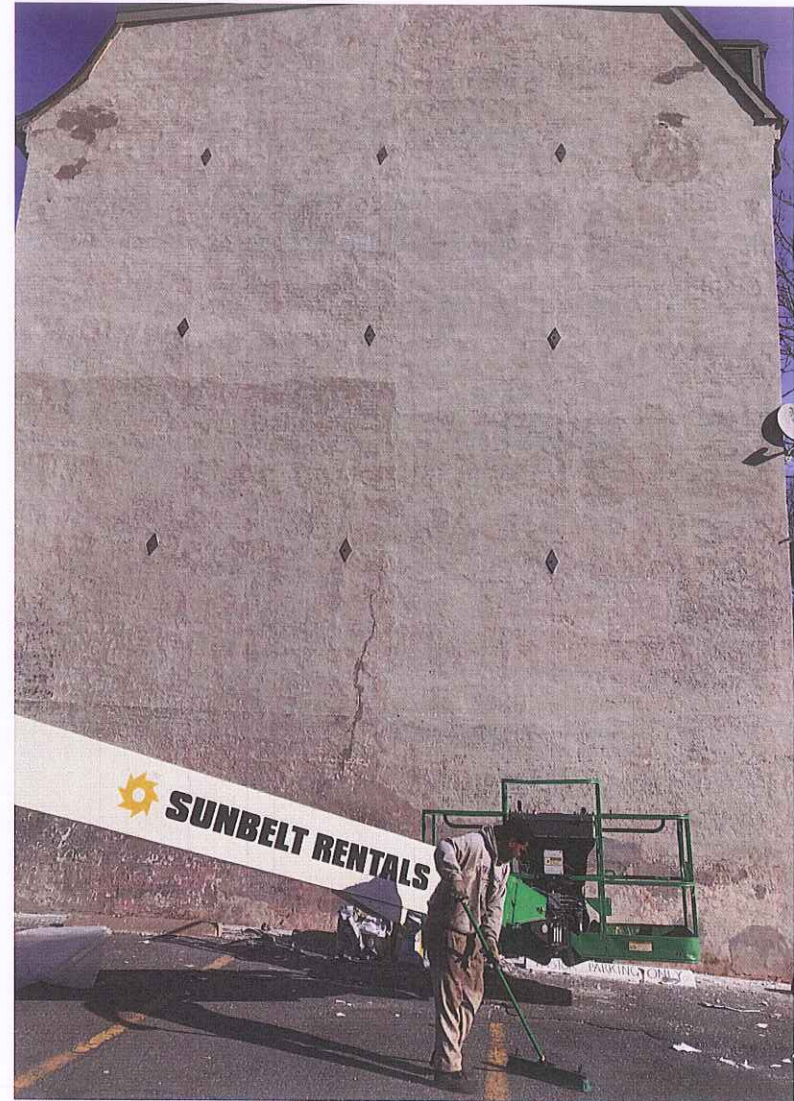
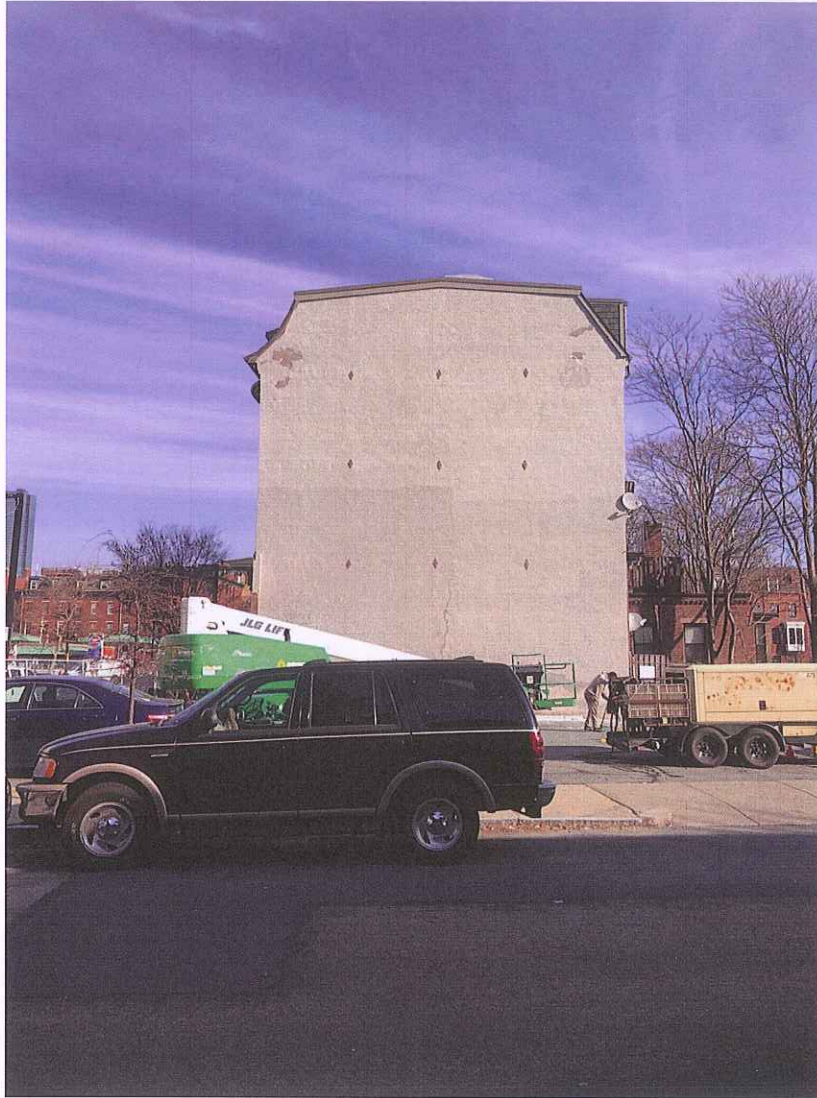
- 3rd installation in a mural series that titled "Breathe Life"
- Reinstates positive messaging in our greater Boston neighborhoods and communities
- Encourages viewers to piggyback on anything negative and turn that moment or situation into something positive; to *Breathing Life* into it.
- Figures communicate the message using American Sign Language (ASL) and say breathe life. With this gesture they inspire each other and anyone who experiences the mural to continue to rise.

Background will be colorful

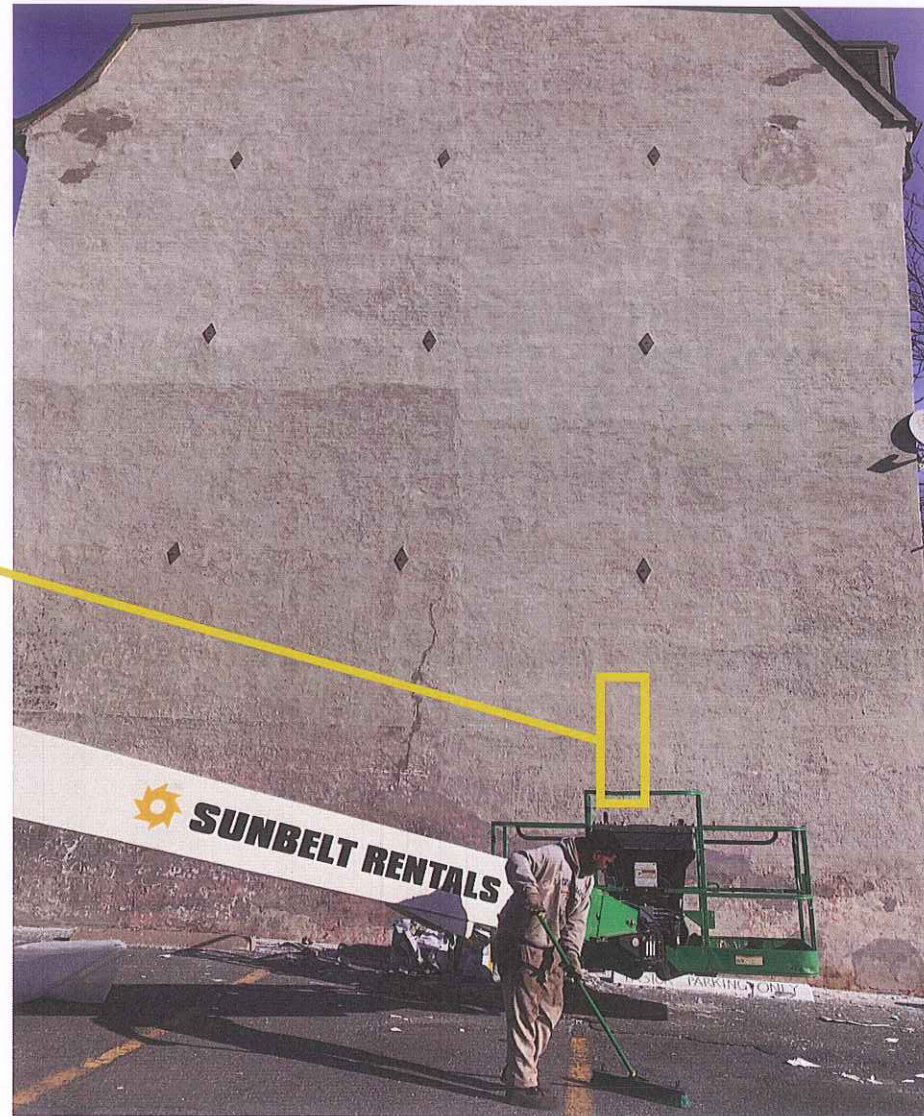
Children ASL signing "breathe life"

Concept sketch of Breathe Life 3 for May, 2019

Existing Conditions; skim coat



Existing Conditions; skim coat



Demonstrated Previous Removal Process: Sodablasting

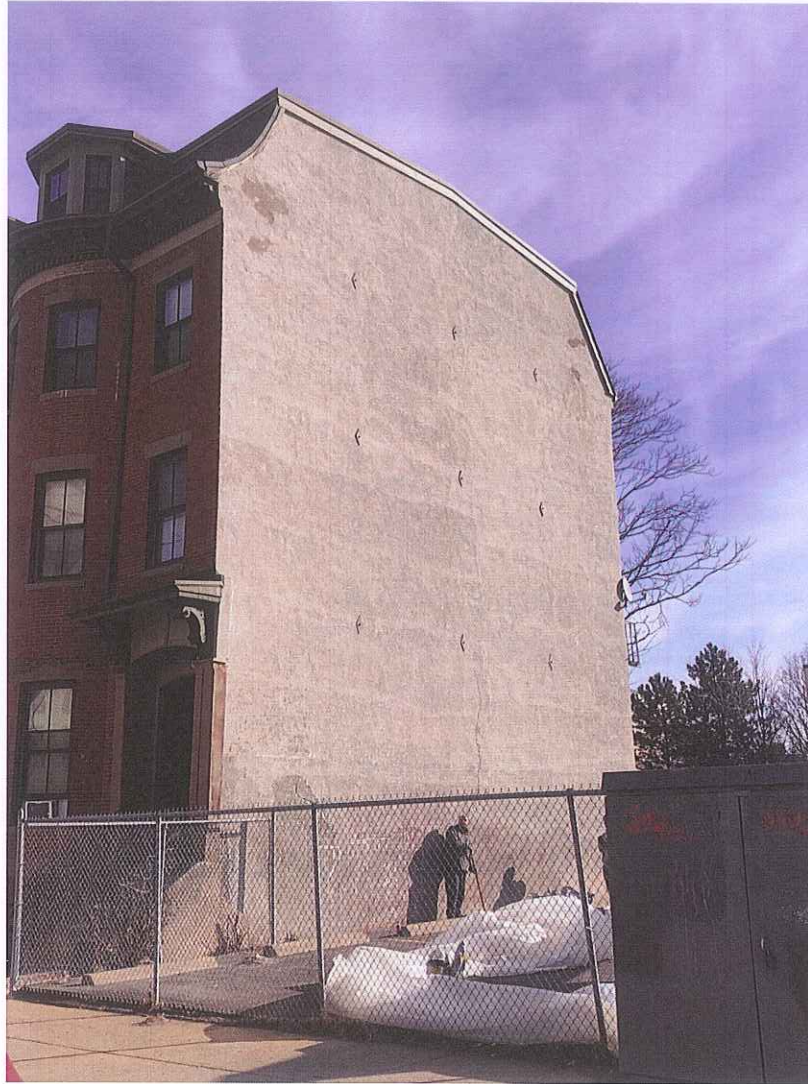


Demonstrated Previous Removal Process: Sodablasting

- Sodablasting is a new paint stripping and cleaning technique that propels specially formulated sodium bicarbonate (baking soda) via compressed air onto the contaminated surface without damaging the existing substrate.

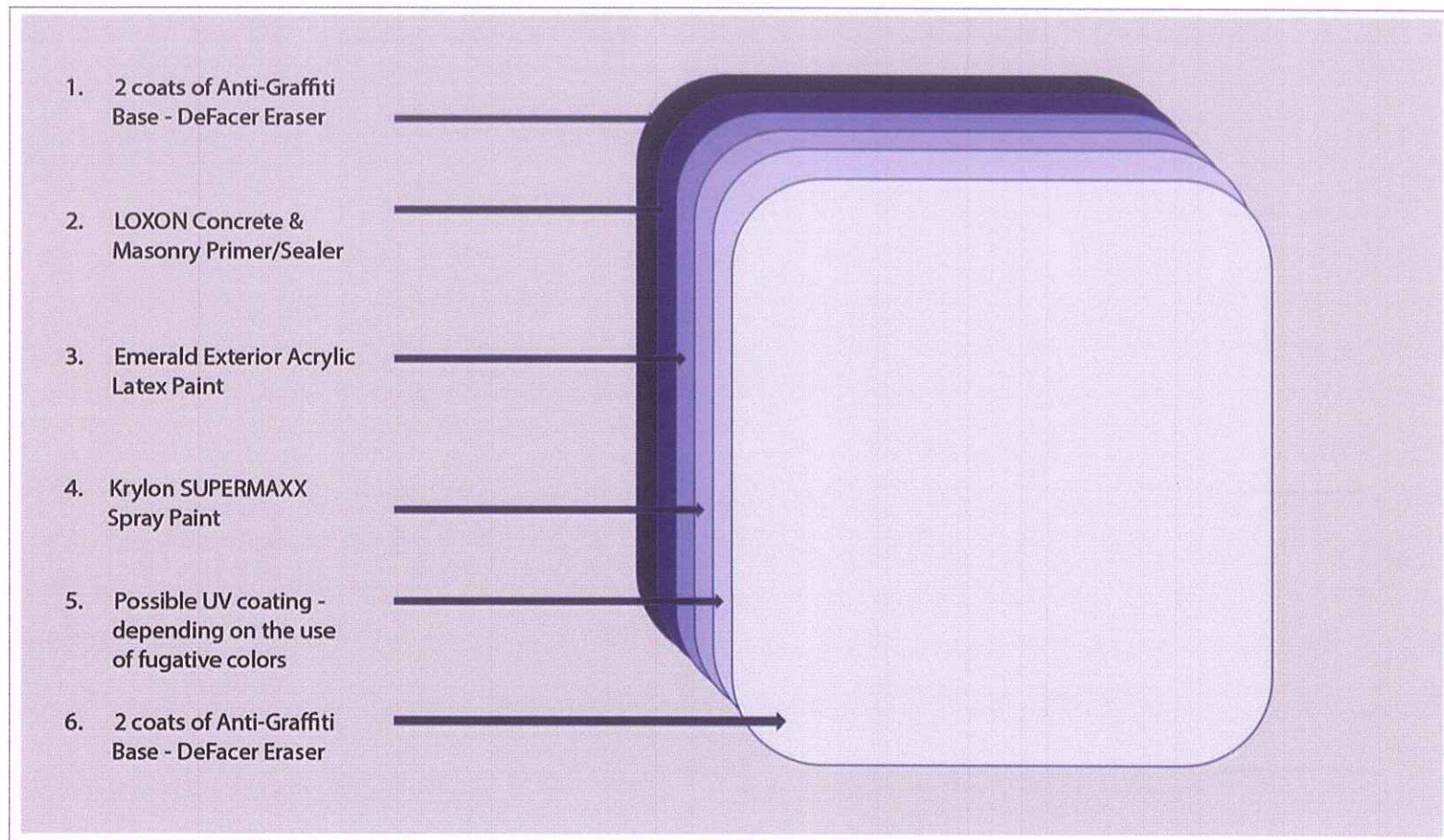


After



NOW
+THERE

Mural Wall: Materials



Mural Wall: Materials; Top Coat: DeFacer Eraser

09 90 00 Painting and Coating
09 94 23 Graffiti Resistant Coatings

PRODUCT DATA SHEET
PROSOCO
SINCE 1939

DeFacer Eraser®
Sacrificial Coating SC-1
removable anti-graffiti shield

OVERVIEW
DeFacer Eraser® Sacrificial Coating SC-1 is a clear, water-based sacrificial coating for control of graffiti on most building surfaces. SC-1 acts as a graffiti barrier, preventing spray paints, crayons and ink from penetrating and staining the underlying surface. Graffiti is removed from protected surfaces by high pressure hot water, DeFacer Eraser® Graffiti Wipe or Sure Klean® Fast Acting Stripper. The coating must then be reapplied to restore the graffiti barrier.

SC-1 allows cost-effective control of chronic graffiti without chemical strippers or abrasives that can damage building surfaces or the surrounding environment. It allows protection of limited areas and spot reapplication without a noticeable change in overall color or appearance. The coating is formulated as a water thin liquid for spray application to porous and textured surfaces.

SC-1 complies with all known regulations limiting Volatile Organic Compound (VOC) content.

SPECIFICATIONS
For all PROSOCO product specifications visit www.prosoco.com and click on "SpecBuilder" or "Selection Finder."

ADVANTAGES

- Allows quick removal of tough graffiti stains from porous and dense surfaces.
- Multi purpose – suitable for masonry, wood, metal and most painted and synthetic surfaces.
- Does not darken or alter natural color.
- Allows same-day re-protection.
- Good UV stability provides minimum 5 years exterior performance.
- Protected areas "breathe" – protects without heavy buildup.
- Very little color change – no shine or gloss.
- Complies with all known national, state and district AIM VOC regulations.

Limitations

- Adhesion will damage coating.
- Graffiti resistance may be reduced by maintenance cleaning. Reapply sacrificial coating to restore graffiti resistance.
- Not suitable for horizontal surfaces.
- Not suitable for application over existing water repellents.
- May flash on certain substrates or when over applied. Always test.
- May flash when applied to damp surfaces or when moisture comes through the substrate.

REGULATORY COMPLIANCE
VOC Compliance
DeFacer Eraser® Sacrificial Coating SC-1 is compliant with the following national, state and district VOC regulations:

- US Environmental Protection Agency
- California Air Resources Board SCM Districts
- South Coast Air Quality Management District
- Maricopa County, AZ
- Northeast Arizona Transport Commission

TYPICAL TECHNICAL DATA

| | |
|------------------|---|
| FORM | White semi-transparent liquid |
| SPECIFIC GRAVITY | 0.976 |
| pH | 7.5-10 |
| WT%/GAL | 0.72 lbs |
| ACTIVE CONTENT | 10% |
| TOTAL SOLIDS | 10% ASTM D 2369 |
| VOC CONTENT | <30 g/L Low Solid Coating |
| FLASH POINT | >200°F (>93°C) ASTM D 3278 |
| FREEZE POINT | 32°F (0°C) |
| SHELF LIFE | 2 years in tightly sealed, unopened container |

Product Data Sheet • Page 1 of 4 • Item #57057 • D5C1 - 063011 • ©2011 PROSOCO • www.prosoco.com

DeFacer Eraser®
Sacrificial Coating SC-1

PRODUCT DATA SHEET
PROSOCO
SINCE 1939

PREPARATION
Protect people, vehicles, property and all surfaces not meant for protection with SC-1 from product, splash, fumes, residue and wind drift. Plants may be protected with running sprinklers. Protect and/or divert pedestrian and auto traffic. Remove spill and over spray immediately from horizontal surfaces as they will become extremely slippery.

Surface must be clean, dry and absorbent. Do not apply after rain until surface is thoroughly dry. If cleaning is needed, use the appropriate Sure Klean® or Stand Off® cleaner. For previously painted or metal surfaces, most can be coated 20 minutes to one hour after cleaning. Other surfaces should be allowed to thoroughly dry before treatment.

Remove graffiti from unpainted surfaces using DeFacer Eraser® Graffiti Wipe or Sure Klean® Fast Acting Stripper. Rinse thoroughly. Apply SC-1 once surface appears dry.

On painted surfaces, cover graffiti with a fresh coat of paint. Let the new paint dry thoroughly before applying SC-1. Use clean water heated to 100°F (32°C) to remove SC-1 from painted surfaces.

Surface and Air Temperatures
Surface and air temperatures should be 40–90°F (4–32°C). Do not apply during rain showers. Protect freshly coated surfaces from rain for two hours following application.

Equipment
Apply using a garden tank sprayer or conventional aerosol spray equipment. Adjust tips and pressure for a wide spray pattern. Use only low pressure for application. Do not atomize.

SC-1 is made for spray application but may be applied with a brush or roller.

Storage and Handling
Keep from freezing. Store in a cool, dry place. Always seal container when not dispensing. Do not alter or mix with other chemicals. Published shelf life assumes upright storage of factory-sealed containers in a dry place. Maintain temperatures of 45–100°F (7–38°C). Do not double stack pallets. Dispose of unused product and container in accordance with local, state and federal regulations.

APPLICATION
Before use, read "Preparation" and "Safety Information."

ALWAYS TEST each type of surface for suitability and results before overall application. Also test for application speed, pattern and technique needed for a uniform, even coat. Test using the following application instructions.

Dilution
Apply as packaged. Do not dilute or alter. Stir or mix well before use.

Typical Coverage Rates
Coverage rates vary based on surface texture and porosity.

- 75–400 square feet per US gallon
- 7–37 square meters per UK gallon

Application Instructions

1. Spray surface lightly from top to bottom. Use an overlapping horizontal spray pattern. (Follow up with a vertical stroke for deep vertical recesses). Avoid flooding the surface or creating heavy rundowns.
2. Let treatment penetrate for 1–2 minutes. Remove buildups using a damp brush or roller. Note: Metal and some painted surfaces can be protected with one coat. Coverage rate for unpainted metal is 300–400 sq ft./gal.
3. Two coats are recommended for porous surfaces and where protection against felt tip markers (inks) is required. Let previous coat dry to touch (20–30 minutes). Lightly apply subsequent coats. Will dry thoroughly in 1–2 hours.

Minimizing Shadows
Three or four coats may be required for effective protection of more sensitive surfaces. The heavier protective film makes shadow removal easier. Shadows/residue left on some surfaces can be removed using DeFacer Eraser® Graffiti Wipe or Sure Klean® Fast Acting Stripper followed by pressure water rinsing.

Surface Inspection
After the surface is dry, inspect carefully to assure that enough material has been applied to create a continuous light film across the surface. This film can usually be seen within 12 inches of the surface and in raking (angled) light. If a continuous surface film cannot be detected, an additional coat may be required. Up to four spray coats may be required for adequate protection of some surfaces.

Cleanup
Clean brushes, rollers and spray equipment using warm, soapy water. Use a mild solvent such as mineral spirits or paint thinner for heavy buildups.

Product Data Sheet • Page 2 of 4 • Item #57057 • D5C1 - 063011 • ©2011 PROSOCO • www.prosoco.com

Mural Wall: Materials; Top Coat: DeFacer Eraser

DeFacer Eraser
Sacrificial Coating SC-1

PRODUCT DATA SHEET
PROSOCO
SINCE 1939

Graffiti Removal
Remove graffiti or other surface stains using high-pressure hot water. Equip sprayer with a 15–25° fan spray tip. Sprayer should deliver three to six gallons (minimum) per minute of 180°F (82°C) heated water at a pressure of 500–1500 psi. To avoid damaging the surface, always use the lowest psi possible that still gives effective results. Apply pressure spray from top to bottom, allowing warm water to flow over the graffiti-stained area. Rinse thoroughly.

Shadows/residues that remain in some surfaces may be removed using DeFacer Eraser® Graffiti Wipe. When surface is dry, reapply SC-1 to restore protection.

NOTE: If high-pressure hot water spray equipment is not available, remove graffiti and the SC-1 coating using DeFacer Eraser® Graffiti Wipe. Apply Graffiti Wipe and allow to remain for three to five minutes. Remove with cold pressure-water rinse or stiff-bristled brush and garden hose. Rinse thoroughly.

Maintenance
After five years, remove coatings not attacked by graffiti using high-pressure hot water. Reapply coating to restore graffiti resistance.

The treated surface may be periodically rinsed/washed down with cold water and mild detergents. Avoid using harsh detergents or industrial cleansers on protected surfaces.

If thorough cleaning is required, remove coating completely and re-protect affected area after surface is cleaned. When hot water is not available, the sacrificial coating may be removed using conventional paint or graffiti removers followed by cold-water rinse.

Other Uses
The easy reventibility of SC-1 makes the coating a suitable masking agent for many commercial and industrial applications requiring temporary protection against over spray of paint and other spray-applied materials.

BEST PRACTICES

Rapid removal is the key to preventing graffiti. Studies show graffiti vandals move on from places where their work is not allowed to stay on view.

Never use products that are not specifically made and warranted for graffiti removal. The wrong product can lock the graffiti in permanently.

Remove graffiti media from Sacrificial Coating SC-1 protected masonry with a hot-water pressure wash, or cold water assisted by DeFacer Eraser® Graffiti Wipe.

After removing a “tagged” SC-1 coating, let the wall dry thoroughly before reapplying.

Apply SC-1 lightly. Inspect treated wall carefully after application to ensure uniform coverage.

Never go it alone. If you have problems or questions, contact your PROSOCO distributor or field sales representative. Or call PROSOCO technical Customer Care toll-free at 800-255-4255.

SC-1 is an ideal maintenance coating for areas of commercial buildings that are difficult to keep clean. Protect trash enclosures, loading docks, landscape walls and other areas exposed to regular mud splash or other staining. Periodic washing with hot water restores a like-new appearance. The surface can then be reprotected for another maintenance cycle. **Note:** Not suitable for horizontal surfaces. Extremely slippery when wet.

SAFETY INFORMATION
DeFacer Eraser® Sacrificial Coating SC-1 is a water-based product. Use appropriate safety equipment and job site controls during application and handling. Read the full label and MSDS for precautionary instructions before use.

First Aid
Ingestion: Do not induce vomiting. Call a physician, emergency room or poison control center immediately.
Eye Contact: Rinse thoroughly for 15 minutes. Get medical assistance.
Skin Contact: Remove contaminated clothing and wash affected area with soapy water. Seek medical assistance if persistent irritation develops. Launder contaminated clothing before reuse.
Inhalation: Remove to fresh air. Consult with physician if irritation persists.

24 Hour Emergency Information:
INFOTRAC at 800-535-5053

Product Data Sheet • Page 3 of 4 • Item #57057 • DESCI - 063011 • ©2011 PROSOCO • www.prosoco.com

DeFacer Eraser
Sacrificial Coating SC-1

PRODUCT DATA SHEET
PROSOCO
SINCE 1939

WARRANTY
The information and recommendations made are based on our own research and the research of others, and are believed to be accurate. However, no guarantee of their accuracy is made because we cannot cover every possible application of our products, nor anticipate every variation encountered in masonry surfaces, job conditions and methods used. The purchaser shall make their own tests to determine the suitability of such products for a particular purpose.

PROSOCO, Inc. warrants this product to be free from defects. Where permitted by law, PROSOCO makes no other warranties with respect to this product, express or implied, including without limitation the implied warranties of

merchantability or fitness for particular purpose. The purchaser shall be responsible to make his own tests to determine the suitability of this product for his particular purpose. PROSOCO's liability shall be limited in all events to supplying sufficient product to re-treat the specific areas to which defective product has been applied. Acceptance and use of this product disavows PROSOCO from any other liability, from whatever source, including liability for incidental, consequential or resultant damages whether due to breach of warranty, negligence or strict liability. This warranty may not be modified or extended by representatives of PROSOCO, its distributors or dealers.

CUSTOMER CARE
Factory personnel are available for product, environment and job-safety assistance with no obligation. Call 800-255-4255 and ask for Customer Care technical support.

Factory-trained representatives are established in principal cities throughout the continental United States. Call Customer Care at 800-255-4255, or visit our web site at www.prosoco.com for the name of the DeFacer Eraser® representative in your area.

Product Data Sheet • Page 4 of 4 • Item #57057 • DESCI - 063011 • ©2011 PROSOCO • www.prosoco.com

Community Engagement: Abutters and Partners

Historic South End LP

Owner and property managers of 808 Tremont Street. A subsidiary of The Community Builders, they also own and maintain other properties on the block. Pleased with N+T's 2017 "See Her" mural by Ann Lewis they desire another temporary mural.

People's Baptist Church

Organized as the First African Baptist Church since 1805; moved to 830 Tremont Street in 1898; frustrated with the vulgar graffiti facing their church and also pleased with "See Her" which saw no graffiti during its 18 month duration.

Lennox/Camden

Julia Butler Youth and Family Center at the Lennox/Camden public housing development in Lower Roxbury where Gibbs grew up will be the site of a second community-engaged interior mural. The Center is the focus of a community building initiative that provides programs for local youth and families and ultimately seeks to support improved public safety and well-being for all residents of the neighborhood.

Piano Craft Guild

174-unit condo building at 791 Tremont Street that began in the 1970s as a state-subsidized building combining residential units with artist workspaces; a conclave of African American artists. More commonly known as the Piano Factory, the remaining five workspaces were recently converted to market-rate condos.

Abbreviated Timeline



NOW:

Community outreach and neighborhood association meetings

MAY 7: April Landmarks hearing

MAY 8: Wall priming and mural painting

MAY 25: Public reception & celebration

Mural removal; no later than October 31, 2020.