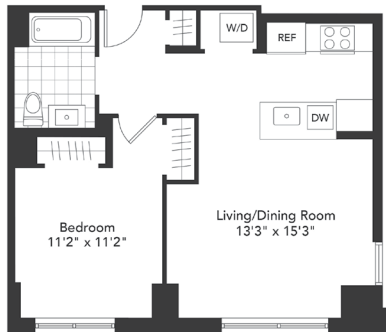


THE BEVERLY

101 BEVERLY STREET



Residences - 1 BR, 1 Bath

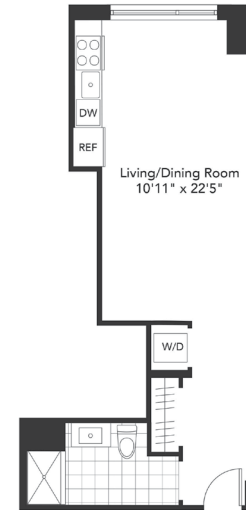
140% AMI ONE BEDROOM
\$2,850* - Available NOW

150% AMI ONE BEDROOM
\$3,050* - Available NOW

165% AMI ONE BEDROOM
\$3,395* - Available August 17th

Now Accepting Applications for 110%, 120%,
140%, 150% and 165% AMI units.

Applications can be emailed or sent via US Postal
Service upon request by calling The Beverly at
617-663-8000 or via e-mail at
APPLY@THEBEVERLYBOSTON.COM



Residences - Studio, 1 Bath

140% AMI STUDIO
\$2,550* - Available NOW

150% AMI STUDIO
\$2,870* - Available September 6th

165% AMI STUDIO
\$3,165* - Available NOW



DWELLING UNITS INCLUDE FEATURES FOR PERSONS WITH DISABILITIES REQUIRED BY THE FHA.



| Privacy Policy © 2019 Related.

All dimensions, specifications, features, amenities and prices are subject to modification without notice or obligation. Terraces, balconies, and windows are not specific. Please see sales agents for details.



THE BEVERLY

101 BEVERLY STREET

Non-Tax Regulated Maximum Income Limits*

Household Size	110%	120%	140%	150%	165%
1 Person	\$91,300	\$99,600	\$116,200	\$124,500	\$136,950
2 Person	\$104,280	\$113,760	\$132,720	\$142,200	\$156,420
3 Person	\$117,370	\$128,040	\$149,380	\$160,050	\$176,055
4 Person	\$130,350	\$142,200	\$165,900	\$177,750	\$195,525
5 Person	\$140,800	\$153,600	\$179,200	\$192,000	\$211,200
6 Person	\$151,250	\$165,000	\$192,500	\$206,250	\$226,875

Non-Tax Regulated Minimum Income Limits*

Bedroom Size	110%	120%	140%	150%	165%
Studio	\$70,735	\$77,156	\$90,000	\$96,454	\$106,086
1 BR	\$75,762	\$82,670	\$96,454	\$103,329	\$113,675
2 BR	\$90,940	\$99,210	\$115,718	\$123,989	\$136,410
3 BR	\$105,081	\$114,616	\$133,751	\$143,286	\$157,621

*Rents and income limits may be subject to change based on new HUD income limits.