

BEACON HILL ARCHITECTURAL COMMISSION
LIGHTING UPDATES

OCTOBER 2019

TABLE OF CONTENTS

PG 1	COVER SHEET
PG 2	PHOTOGRAPHS
PG 3	PHOTOGRAPHS
PG 4	EAST ELEVATION
PG 5	SOUTH ELEVATION
PG 6	EAST ELEVATION DETAIL
PG 7	SOUTH ELEVATION DETAIL
PG 8	FIXTURE CUT SHEET
PG 9	FIXTURE PHOTO

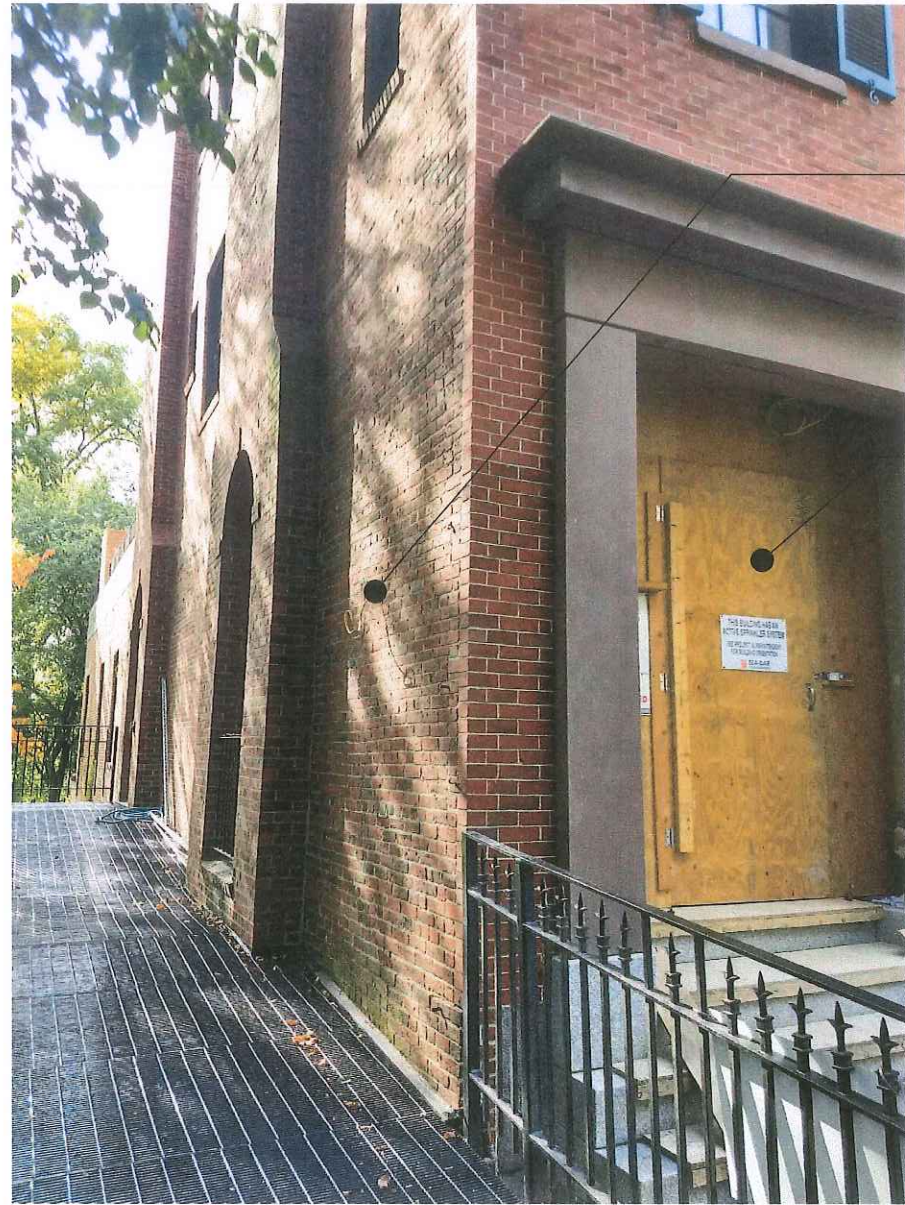
S.J.GALLAGHER

DESIGN

P.O. BOX 397229
CAMBRIDGE, MA 02139
(401) 569-4416
INFO@SJGALLAGHERDESIGN.COM



FGS DESIGN, L.L.C.
ARCHITECTURE ~ INTERIOR DESIGN
381 PARK AVENUE SOUTH, NEW YORK CITY, NY 10016
E: info@fgs-a.com
T: 646-470-6528 WWW.FGS-A.COM



(A) LOCATION OF PROPOSED
NEW FLAMBEAUX "ENGLAND"
LANTERN

NEW ENTRY (IN PROGRESS)
PER 2018 BHAC APPROVAL

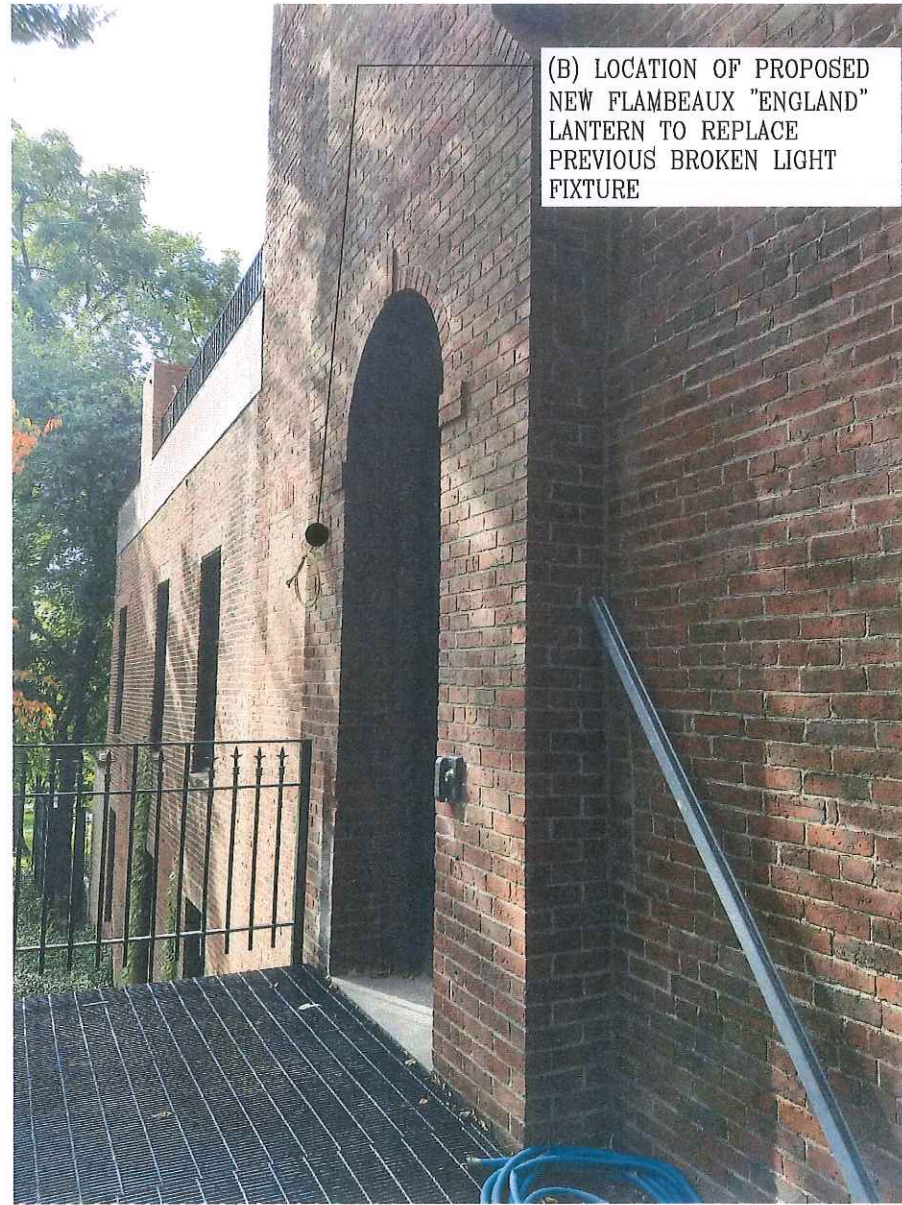
1 NORTHEAST CORNER: CURRENT CONDITIONS (OCT 2019)



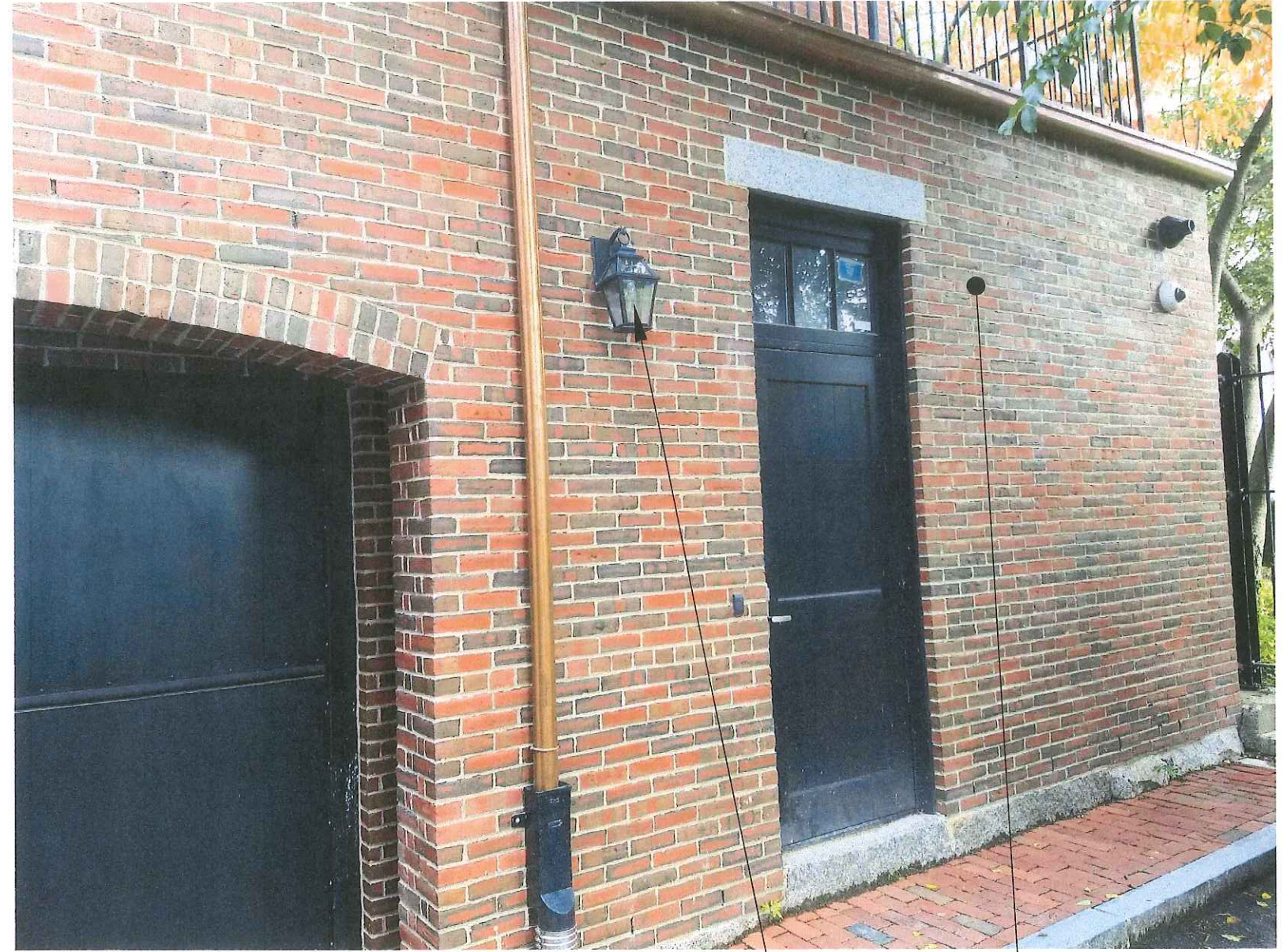
SPOTLIGHTS & CONDUIT
(REMOVED)

PREVIOUS ENTRY (REMOVED)

2 NORTHEAST CORNER (2018 CONDITIONS)



1 SIDE ENTRANCE: CURRENT CONDITIONS (OCT 2019)



2 SOUTH ELEVATION: CURRENT CONDITIONS (OCT 2019)

(D) LOCATION OF PROPOSED NEW FLAMBEAUX "ENGLAND" LANTERN TO MIRROR "C"

(C) EXISTING LANTERN TO BE REMOVED & REPLACED WITH NEW FLAMBEAUX "ENGLAND" LANTERN

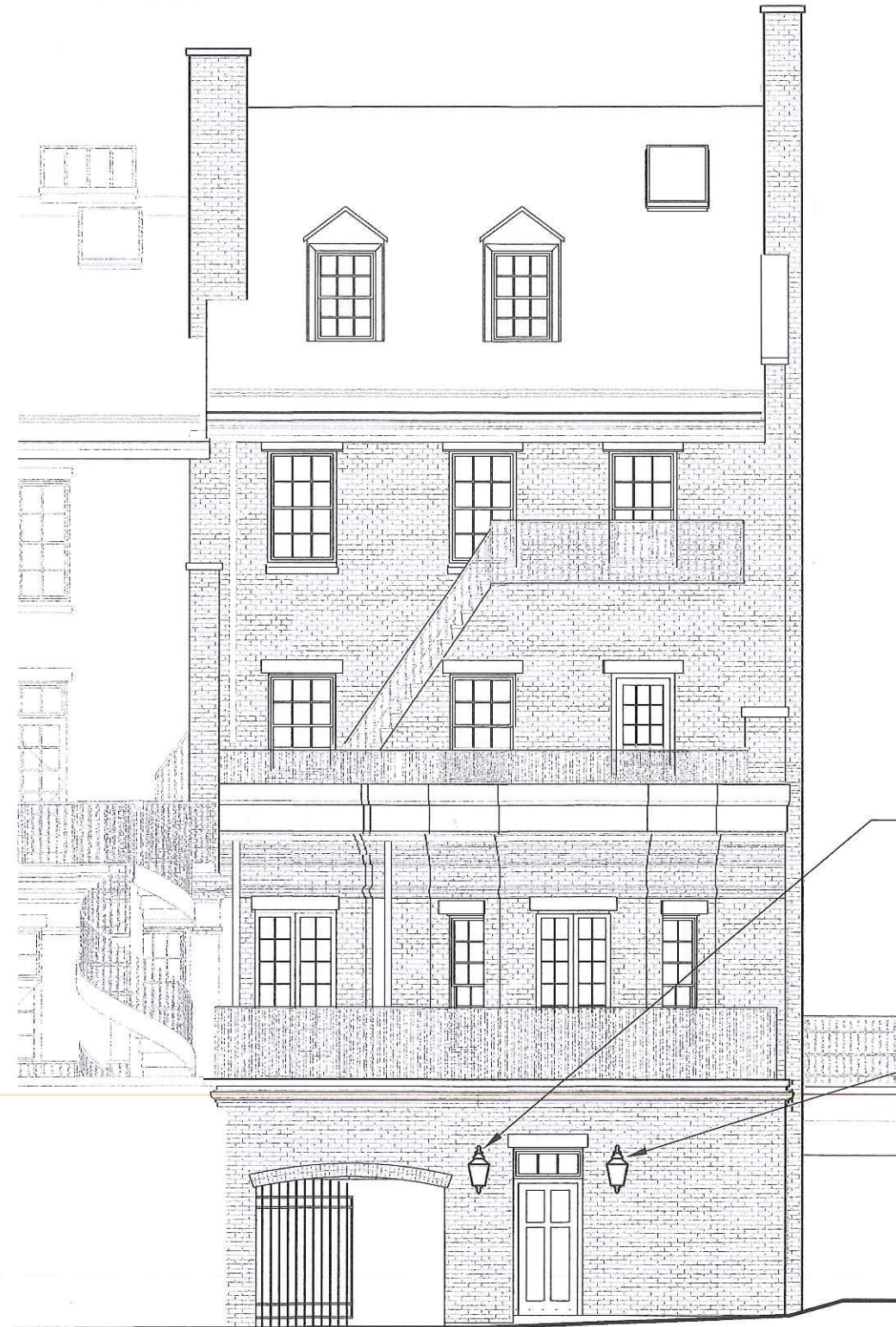
NOTE: NO PROPOSED CHANGES
OTHER THAN LANTERNS



(B) PROPOSED NEW FLAMBEAUX
"ENGLAND" LANTERN TO REPLACE
PREVIOUS BROKEN LIGHT FIXTURE

(A) PROPOSED NEW FLAMBEAUX
"ENGLAND" LANTERN

LOCATION OF SPOTLIGHTS &
CONDUIT (REMOVED)



NOTE: NO PROPOSED CHANGES
OTHER THAN LANTERNS

(C) EXISTING LANTERN TO BE
REMOVED & REPLACED WITH
PROPOSED NEW FLAMBEAUX
"ENGLAND" LANTERN

(D) PROPOSED NEW FLAMBEAUX
"ENGLAND" LANTERN TO MIRROR "C"

← 7 MT VERNON PLACE:
NOT IN SCOPE



NOTE: NO PROPOSED CHANGES
OTHER THAN LANTERNS

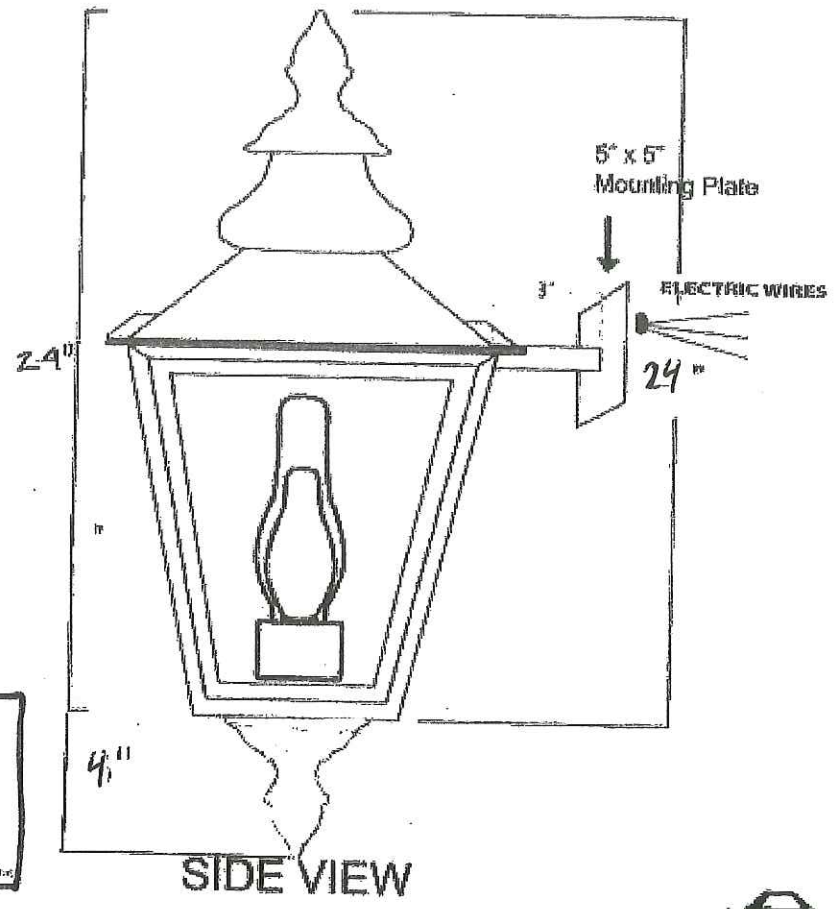
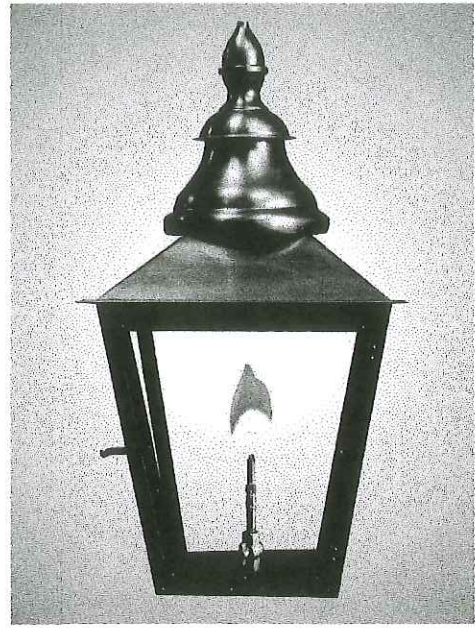
← 7 MT VERNON
PLACE: NOT
IN SCOPE

(C) EXISTING LANTERN TO BE REMOVED & REPLACED
WITH PROPOSED NEW FLAMBEAUX "ENGLAND" LANTERN

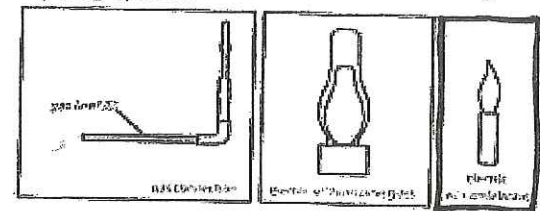
(D) PROPOSED NEW FLAMBEAUX
"ENGLAND" LANTERN TO MIRROR "C"

24" England Standard Bracket - Electric

MATERIAL & FINISH:
DARK OXIDIZED COPPER
(BLACK)



Lighting Options:



PROPERTY OF FLAMBEAUX LIGHTING - 614 N. CAUSEWAY BLVD - METAIRIE, LA 70001
**Because our fixtures are handcrafted, measurements may not be exact, but as close as possible*





24" Flambeaux England
Standard Lantern (shown in
copper finish)
Actual finish to be dark
oxidized copper (black)