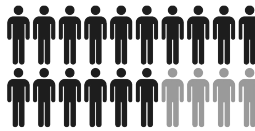
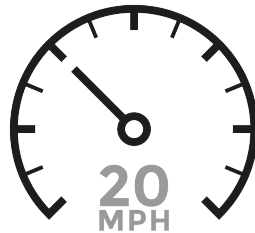


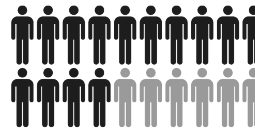
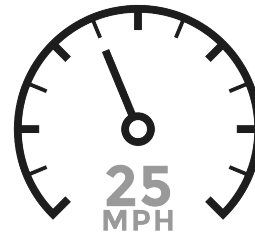
Mt. Hope/Canterbury Neighborhood Slow Streets

10/10/2019 Neighborhood Meeting

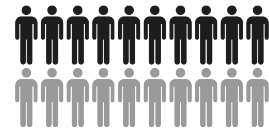
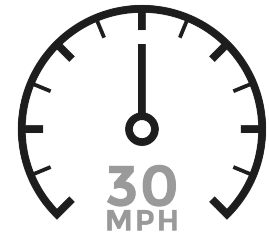
**Principle:
Slower
speeds
mean safer
streets**



likelihood of
fatal or
severe injury



likelihood of
fatal or
severe injury



likelihood of
fatal or
severe injury

Timeline

● APRIL 2019

Shared design plans

*Reviewed requests for additional speed humps,
daylighting, and signage*

*Conducted additional engineering studies and
incorporated feasible additions into design*

● TONIGHT

Share final design plans

● WINTER 2019

*Resolve design issues and seek
inter-departmental approval*

SPEEDING

WHAT WE HEARD:

- Speeding is a concern throughout neighborhood
- **Changes since April presentation:** Request for more speed humps on Mt. Calvary and Harding Rd.

20 MPH speed limit markings (refer to map for exact locations)

- 20 MPH signs and pavement markings mark the entrance to the neighborhood
- Traffic calming changes self-enforce slower speeds



Speed Humps (refer to map for exact locations)

- Strategically placed 200-250 ft. apart to encourage speeds below 25 MPH
- Do not impact drainage, parking



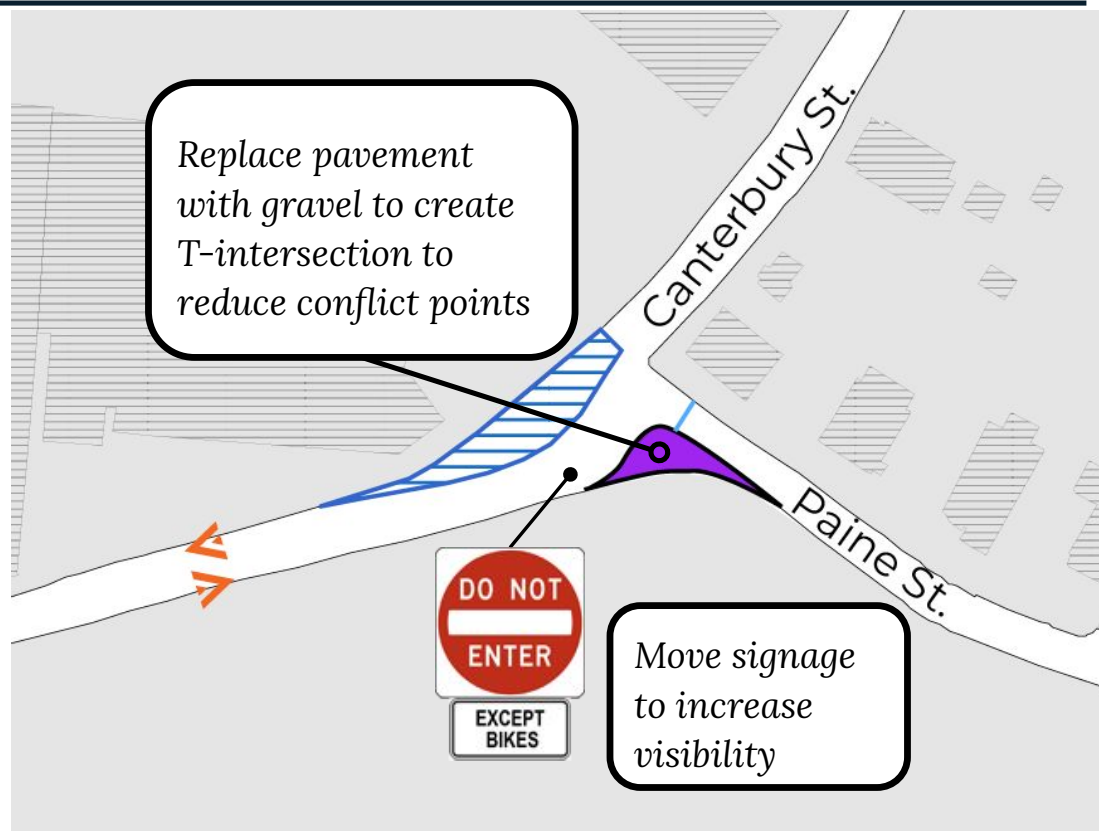
PAINE ST. AND CANTERBURY ST.

WHAT WE HEARD:

- Navigation is confusing
- Signs are unclear
- People drive wrong way on Paine
- People regularly drive over speed limit
- People bike eastbound on Paine St.

WHAT WE FOUND:

- 11 crashes on Canterbury between 2015 and 2017
- Wide intersection encourages speeding



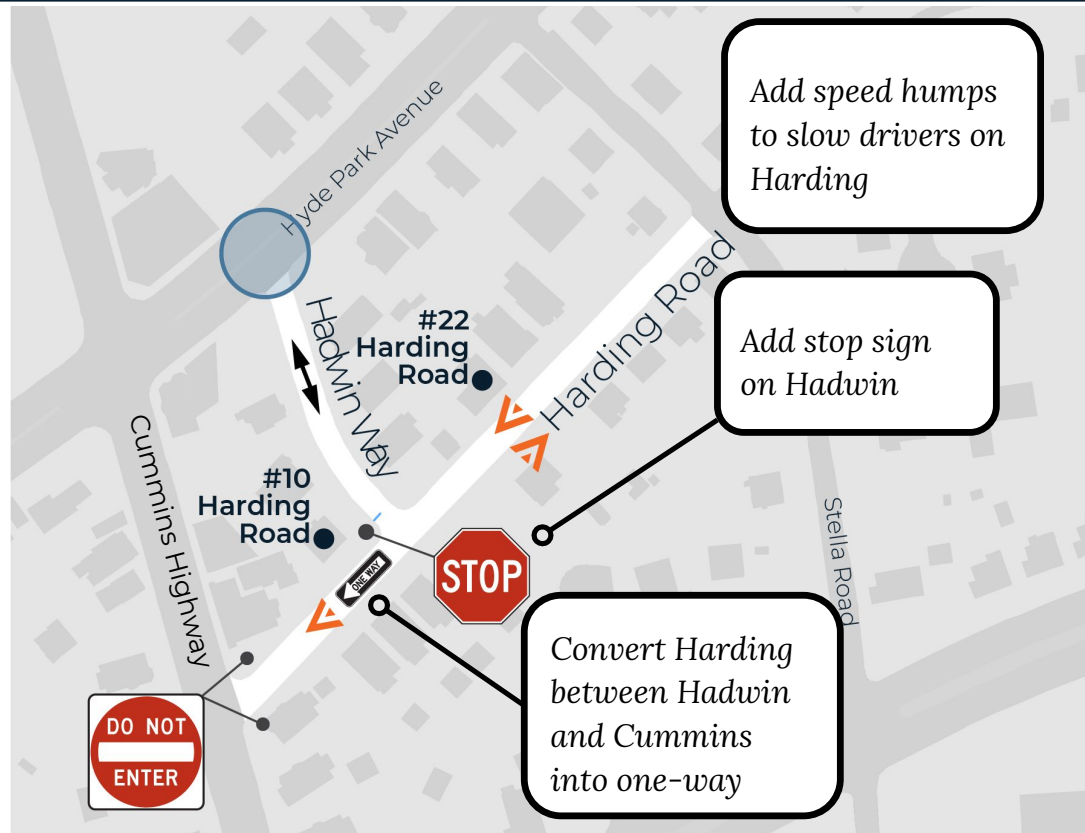
HARDING RD. AND HADWIN WY.

WHAT WE HEARD:

- People turn on Harding and Hadwin to skip traffic light on Cummins
- People are regularly speeding
- Intersection of Harding and Hadwin feels dangerous for all users

WHAT WE FOUND:

- At afternoon and morning hours, about 45 drivers (more than 50%) turn left from Harding to Hadwin



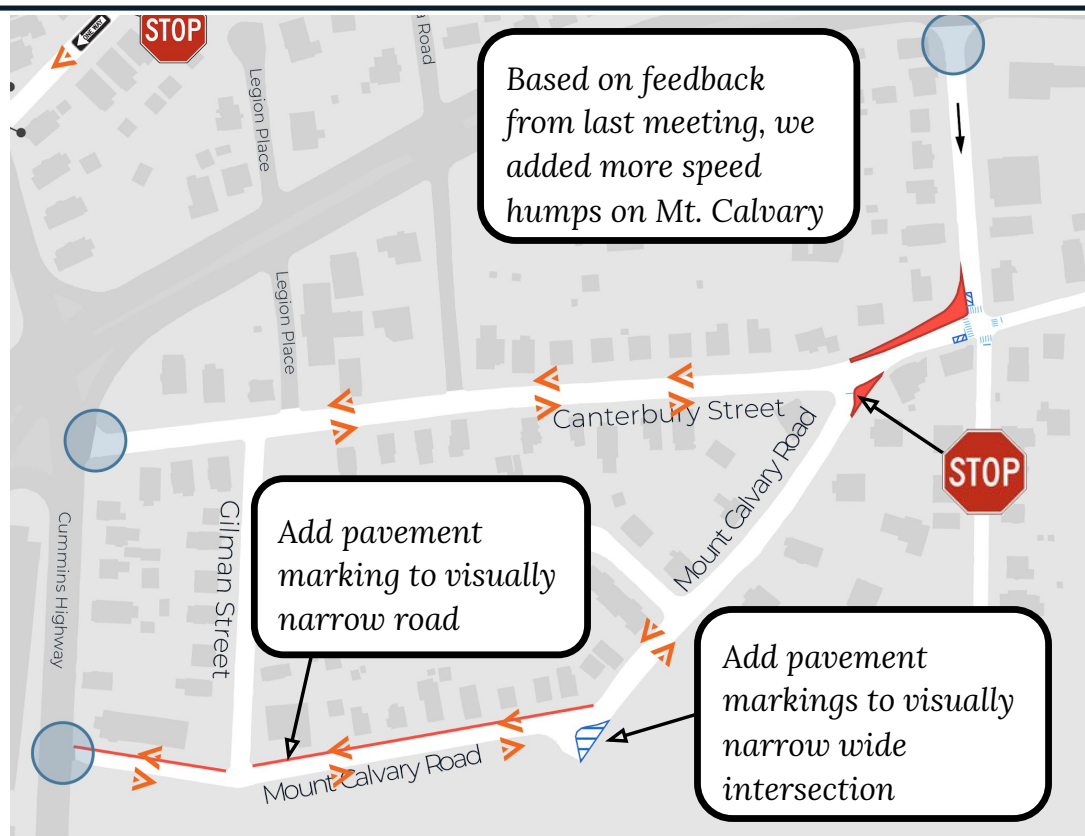
MT. CALVARY AND CANTERBURY ST.

WHAT WE HEARD:

- People driving regularly speed
- People want to get to the park, but Mt. Calvary does not feel safe to cross
- Wide curve at entrance of cemetery encourages people to drive at high speeds

WHAT WE FOUND:

- With few stopping points, people drive at high speeds from Cummins to Canterbury



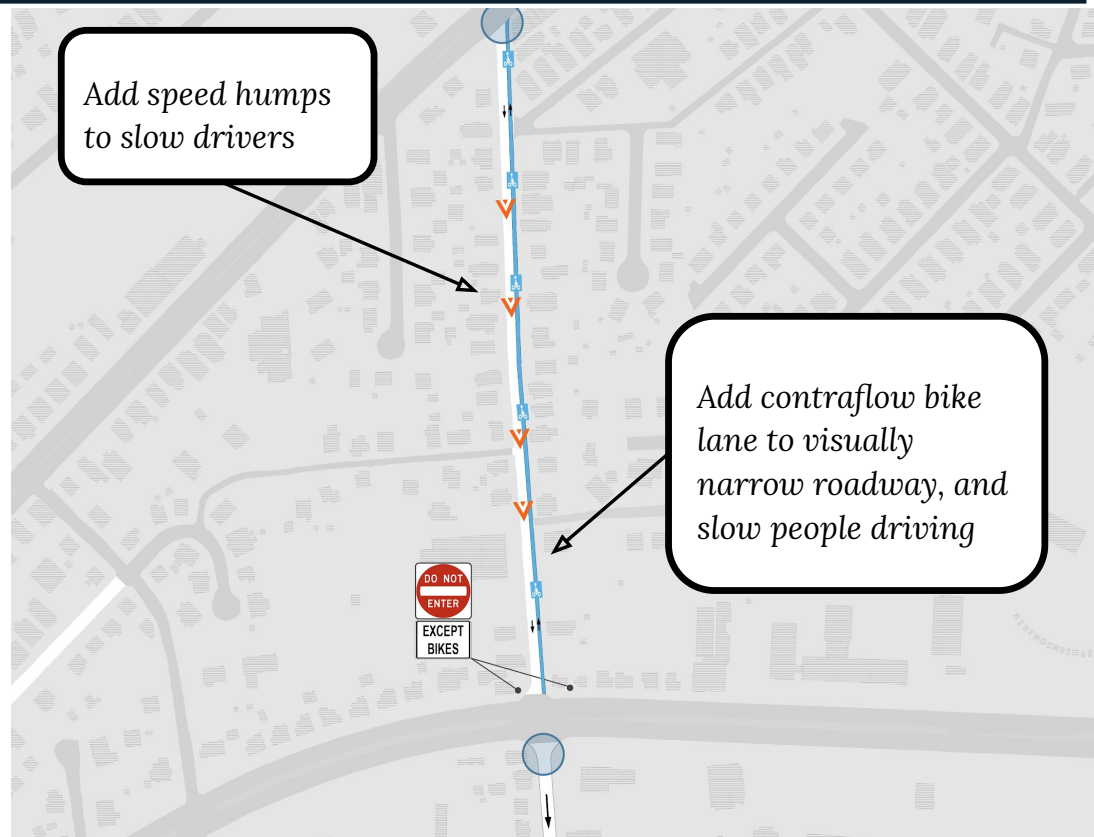
MT. HOPE ST.

WHAT WE HEARD:

- With few stopping points, people drive on Mt. Hope to bypass Cummins Hwy., but at high speeds
- Travel lane is wider than most streets

WHAT WE FOUND:

- Travel lane is wider 25 ft. wide with parking on one side. The wide lane encourages speeding
- 55% of people driving are traveling over 25 MPH



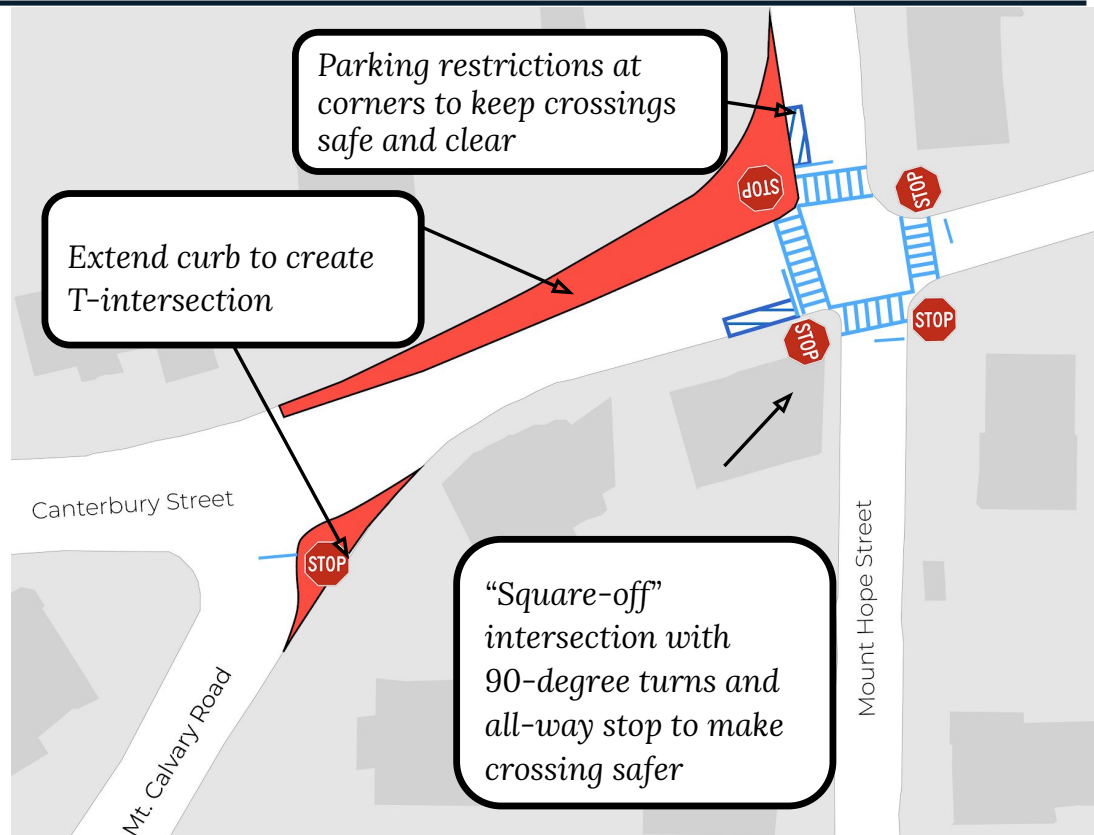
MT. HOPE/CANTERBURY ST/MT. CALVARY RD.

WHAT WE HEARD:

- Wide intersection makes turns dangerous
- Crossing the street does not feel safe
- People driving do not stop for people crossing
- Dangerous for children boarding school bus
- Request for "daylighting" to make crossing safer

WHAT WE FOUND:

- Residents preferred "squared-off" intersection and all-way stop
- Based on engineering recommendations, need to modify design to address drainage issues



If you have questions, contact:

Hannah Fong
(617) 635-1347
hannah.fong@boston.gov

Boston Transportation Department
1 City Hall Square, Room 721
Boston, MA 02201