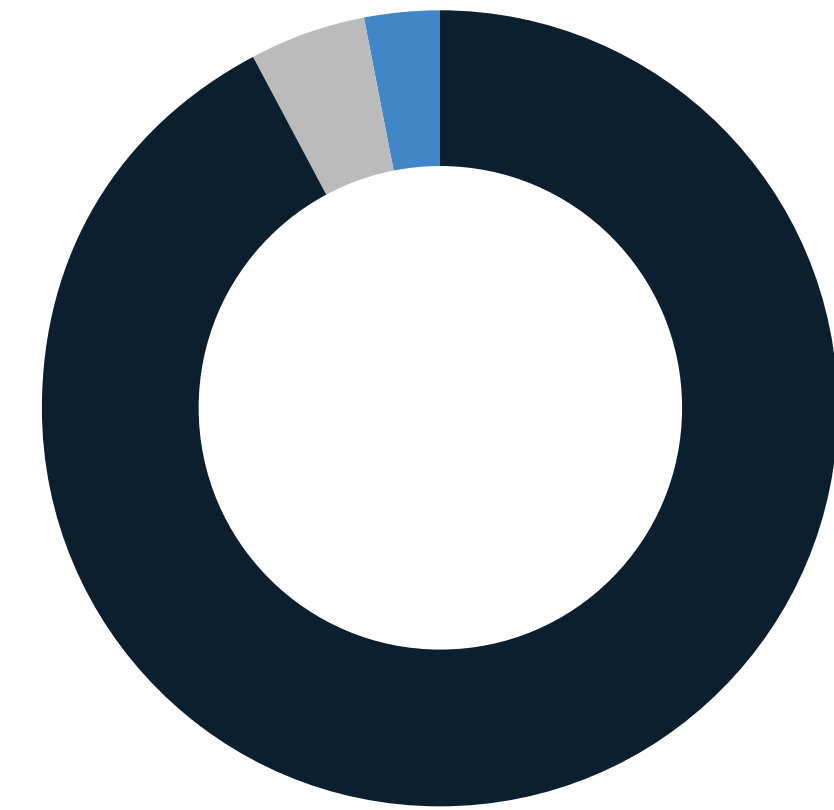


DOES THE CITY NEED MORE OPEN SPACE?



● MORE ● LESS ● DON'T KNOW

595

RESPONDENTS

756

PINS PLACED ON MAP

WHAT SHOULD THE CITY OF BOSTON PRIORITIZE IN IDENTIFYING LANDS FOR PROTECTION OR ACQUISITION?
(SELECT ALL THAT APPLY)

Increasing open spaces that provide opportunities for recreational activities and community events.

257

Increasing areas that help address climate-related issues -- such as excessive flooding or heat.

361

Providing areas that connect existing open spaces to each other.

330

Increasing open space in neighborhoods that have limited park access currently or are experiencing significant increases in population.

464

Protecting areas of conservation or ecological value.

370

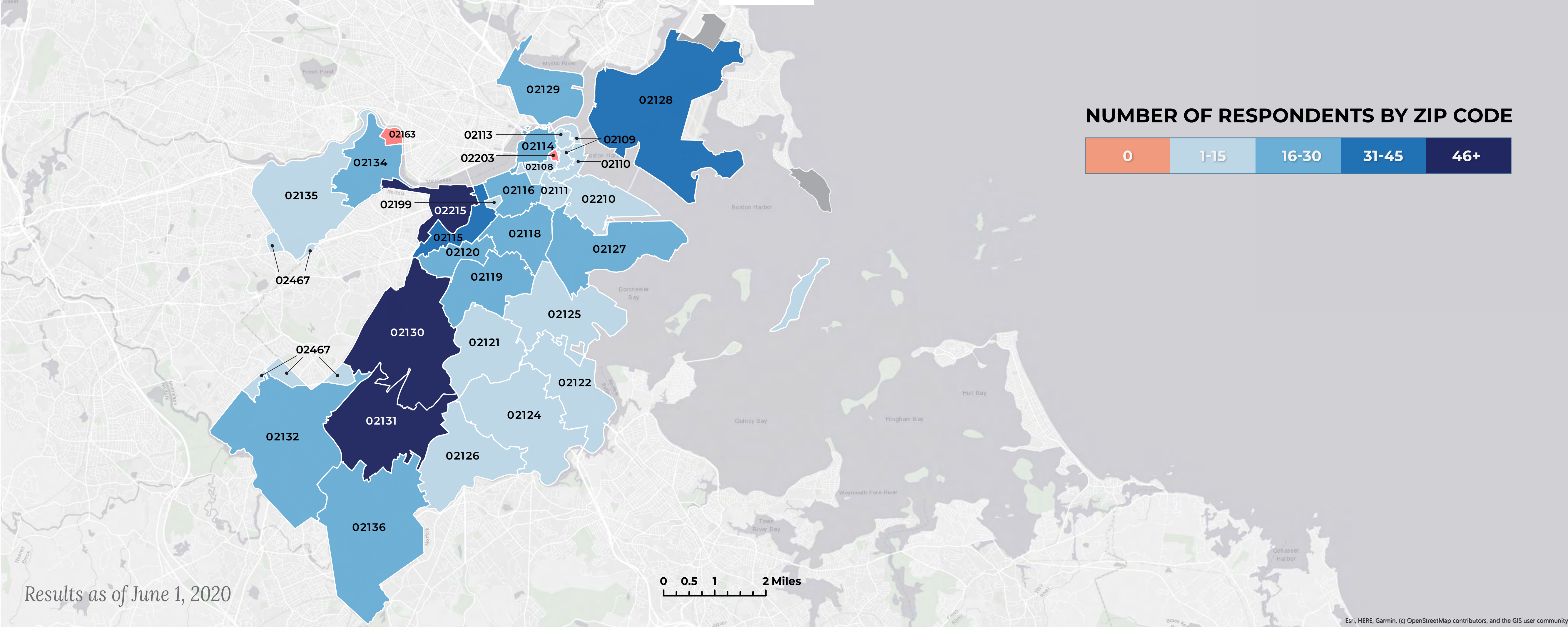
Other

31

* 'Other' responses have been lightly edited for clarity and length

samples*

"Create accessible green space"
"Protect bird havens"

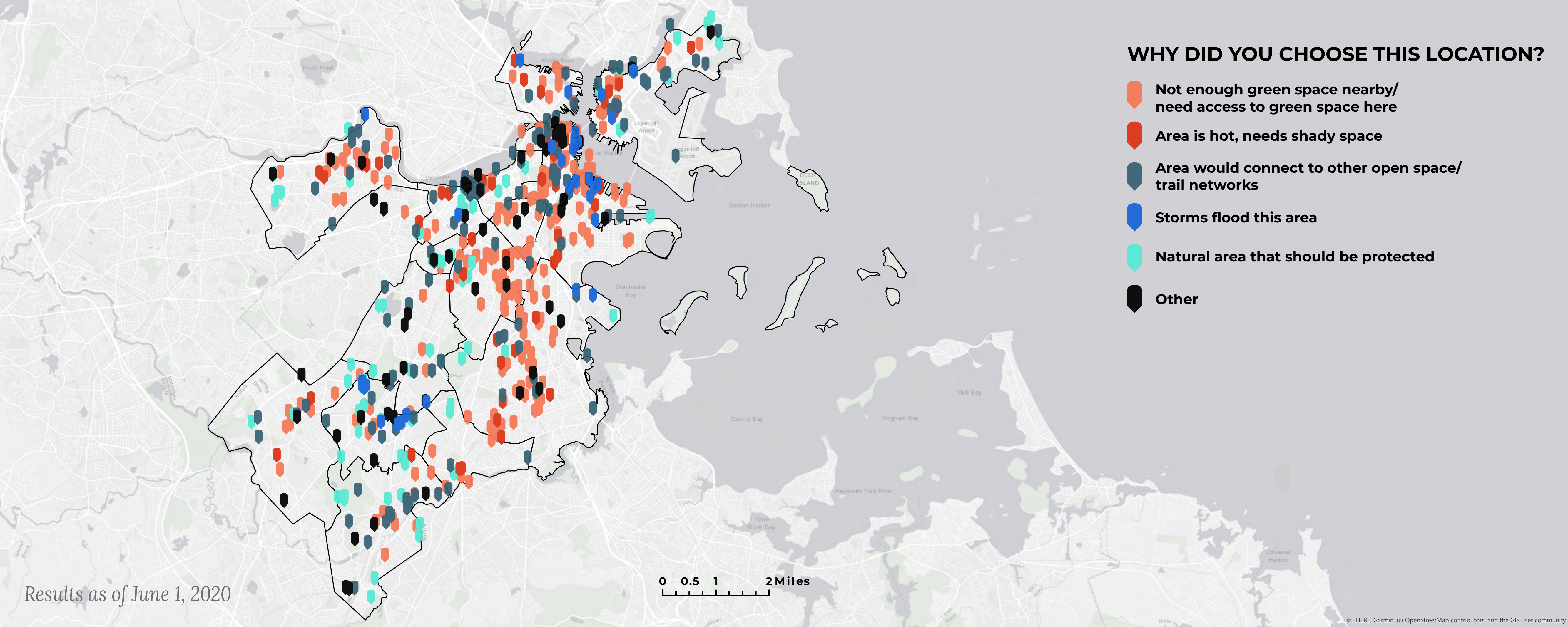


NUMBER OF RESPONDENTS BY ZIP CODE









Results as of June 1, 2020





WHY DID YOU CHOOSE THIS LOCATION?

-  Not enough green space nearby/
need access to green space here
-  Area is hot, needs shady space
-  Area would connect to other open space/
trail networks
-  Storms flood this area
-  Natural area that should be protected
-  Other

Results as of June 1, 2020

0 0.5 1 2 Miles

WHY DID YOU CHOOSE THIS LOCATION FOR OPEN SPACE?

The surrounding community doesn't have enough green open space. Neighbors need access to green open space here.

294

This area is really hot and needs a shady space.

51

This area would connect to other open spaces and/or trail networks.

182

During strong storms, water flows into this area and causes flooding.

48

This is a natural area that should be protected.

124

Other

62

** 'Other' responses have been lightly edited for clarity and length*

*samples**

"Large open space to compensate for increased development"

"Safe, police-free space for youth"

"Vacant space should be turned into a park"

If we don't know about it, we can't act on it, so please share your input with us!