

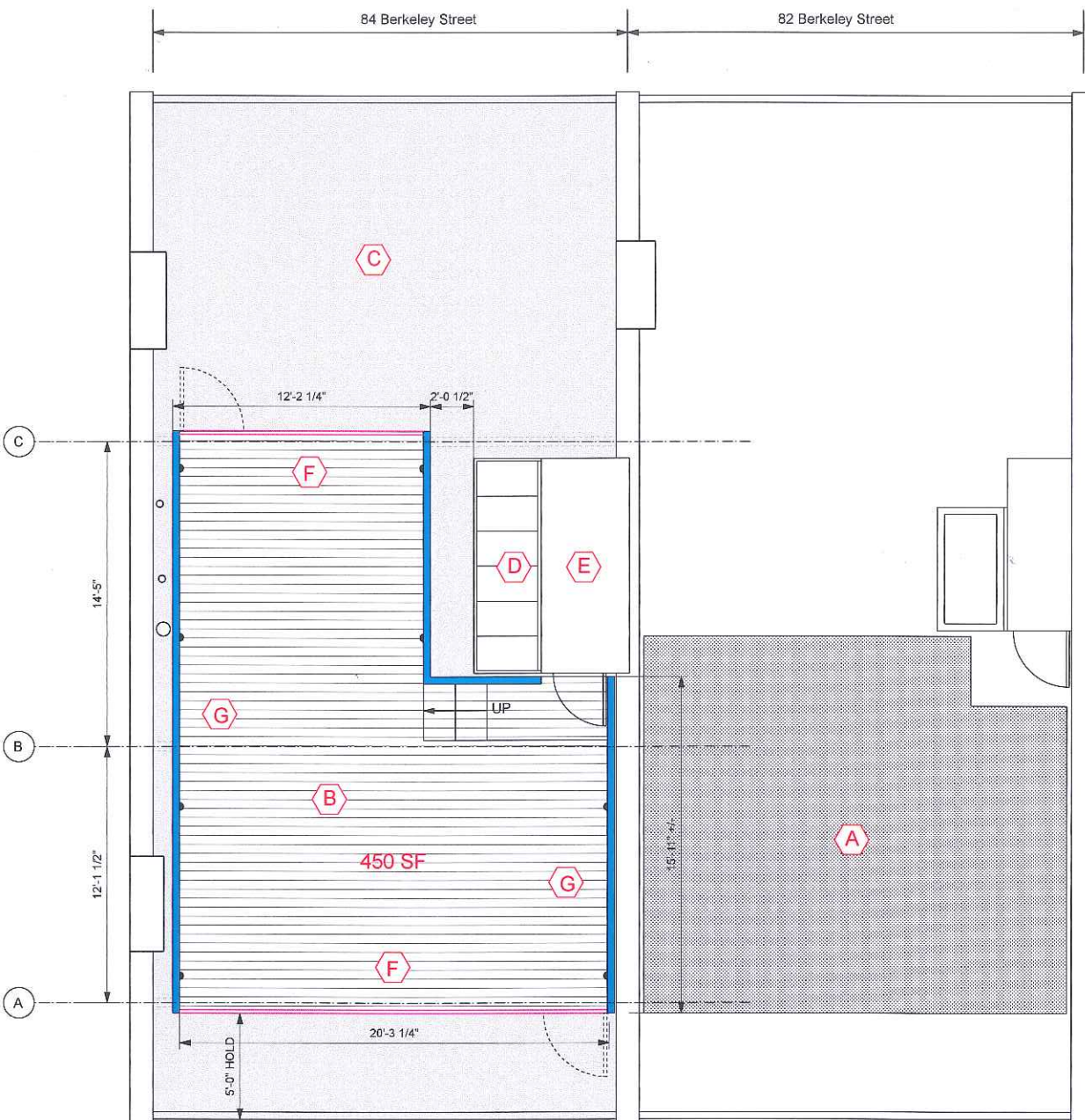
LEGEND & NOTES

- A EXISTING ROOF DECK @ 82 BERKELEY
- B NEW ROOF DECK @ 84 BERKELEY
- C NEW ROOF (BY OTHERS)
- D EXISTING SKYLIGHT TO REMAIN
- E EXISTING HEADHOUSE TO REMAIN
- F 42" TALL OPEN GUARDRAIL, REFER TO SPEC.
- G 42" TALL SOLID GUARDRAIL

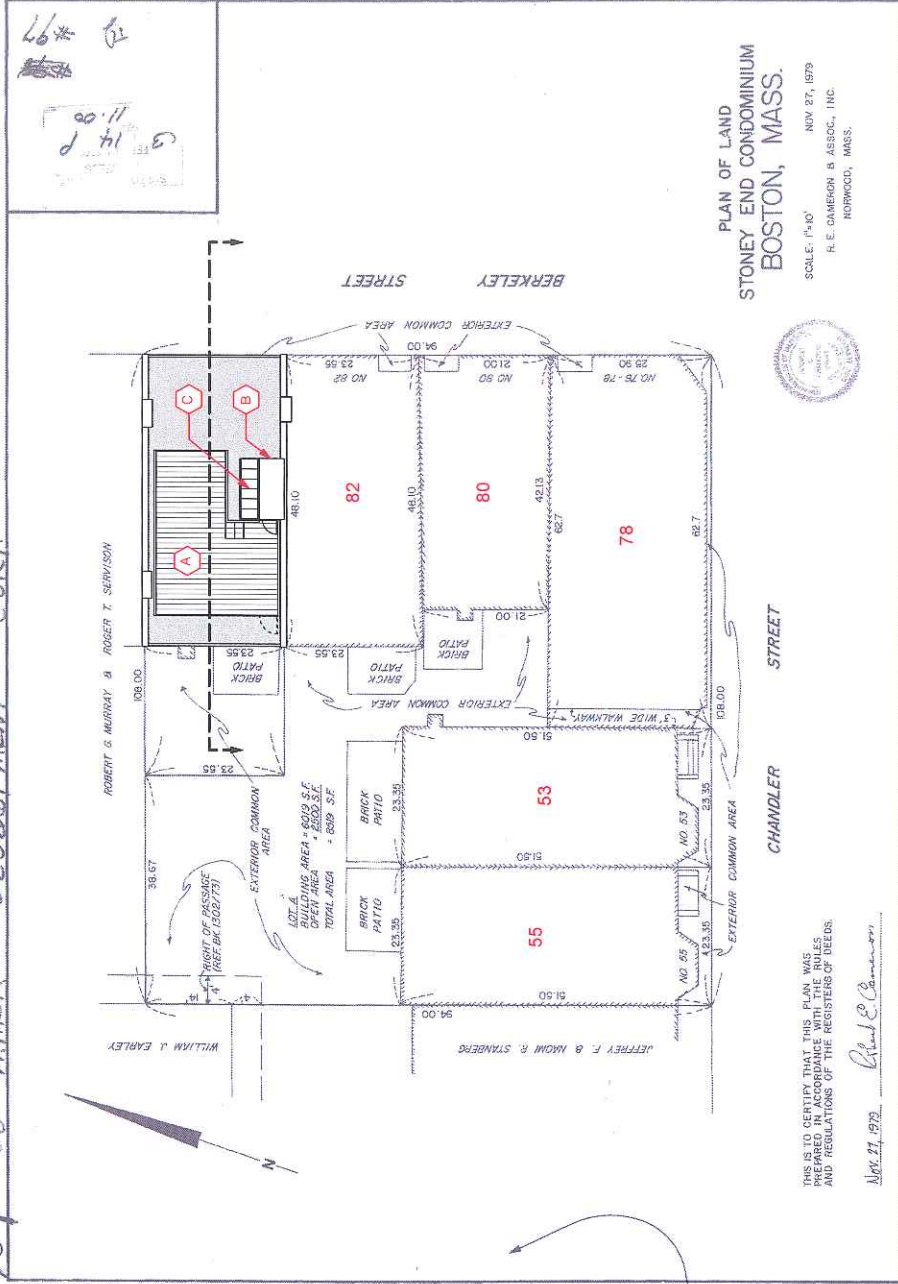
OPEN GUARDRAIL SPECIFICATION:

SPECTRUM RAILING BY ATLANTIS RAILING

WALL MOUNTED ACCENT LIGHTS BY
 TIMBER TECH (WHITE)



104-CO-MARK DEVELOPMENT CORP



9382-36

LEGEND & NOTES

- (A) NEW ROOF DECK
- (B) EXISTING HEADHOUSE
- (C) EXISTING SKYLIGHT
- SHADE AREA INDICATES EXISTING ROOF LIMITS @ 84 BERKELEY
- BUILDING SECTION

PLAN OF LAND
STONEY END CONDOMINIUM
BOSTON, MASS.

SCALE: 1/8"=1'-0"
NOV 27, 1979
H. E. CAMERON & ASSOC., INC.
HORWOOD, MASS.



THIS IS TO CERTIFY THAT THIS PLAN WAS PREPARED IN ACCORDANCE WITH THE RULES AND REGULATIONS OF THE REGISTER OF DEEDS.

NOV 27, 1979 H. E. Cameron

LOCUS PLAN, 84 BERKELEY STREET
BOSTON MA 02116

JULY 17th 2020

EXISTING HEADHOUSE
(84 BERKELEY)

DECK NOT TO BE MORE THAN 12" ABOVE
HIGHT POINT @ ROOF

HIGH POINT @
EXISTING ROOF

HOLD THIS BEAM 2" ABOVE ROOF
@ THIS LOCATION

Berkeley
Street

PRIVATE
COURTYARD

12'-1.38"

14'-1"

3
A-01

NEW ROOF DECK W/
2x8 PT FRAMING

GUARDRAIL / EDGE OF DECK
TO BE HELD BACK BY 5'-0" FROM
REAR ROOF EDGE AS SHOWN

7'-4"

4'-10"

9'-3/4"

50'-3"

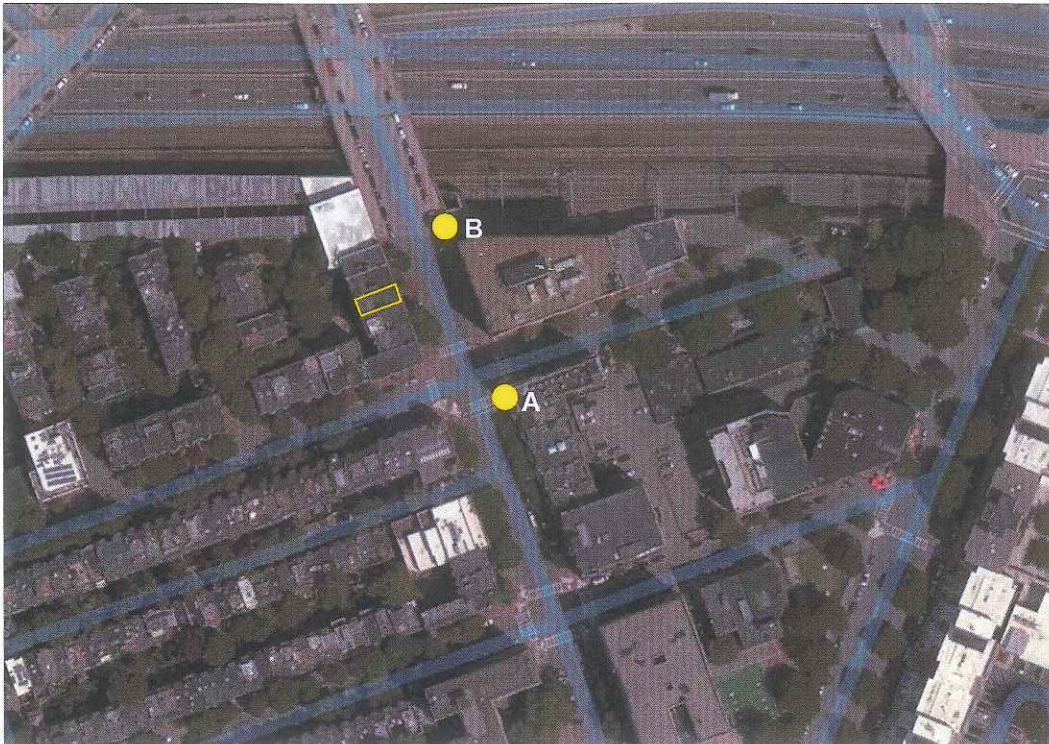
53'-8"

REAR ROOF EDGE



BERKELEY STREET





LOCATIONS WHERE PHOTOS BELOW WERE TAKEN



PHOTO A (FROM CORNER OF CHANDLER & BERKELEY)



PHOTO B (DIRECTLY ACROSS BUILDING ON BERKELEY STREET)



LOCATIONS WHERE PHOTOS BELOW WERE TAKEN



PHOTO C (DIRECTLY ACROSS BUILDING ON BERKELEY STREET)

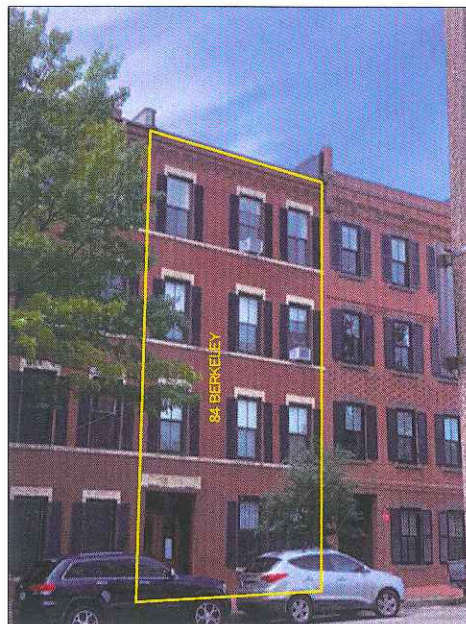
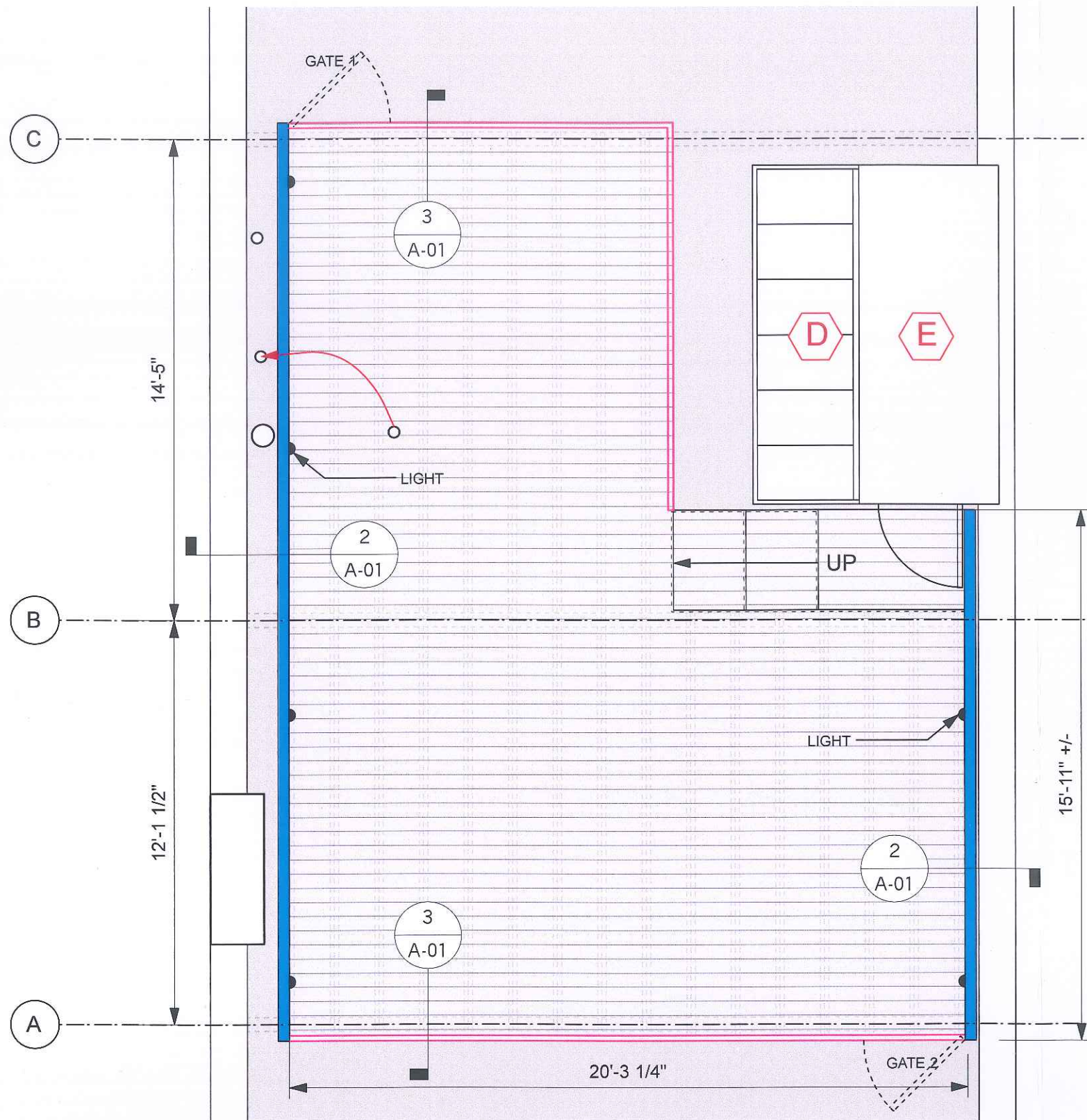
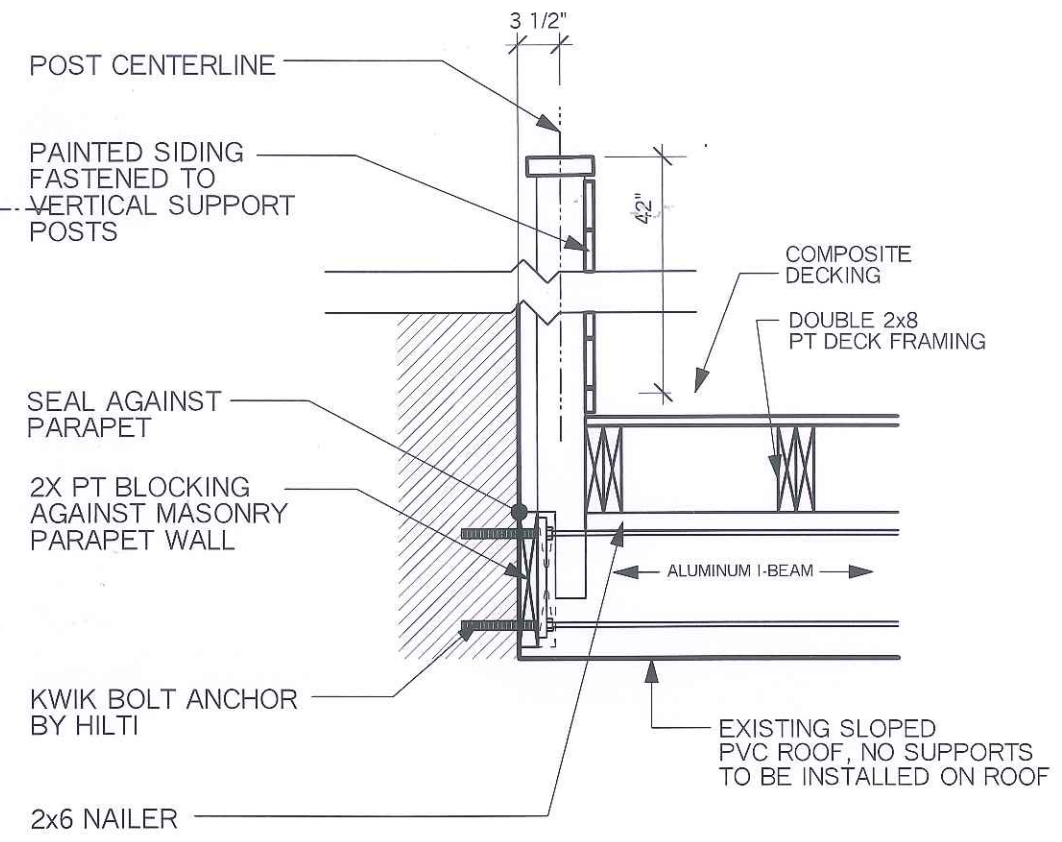


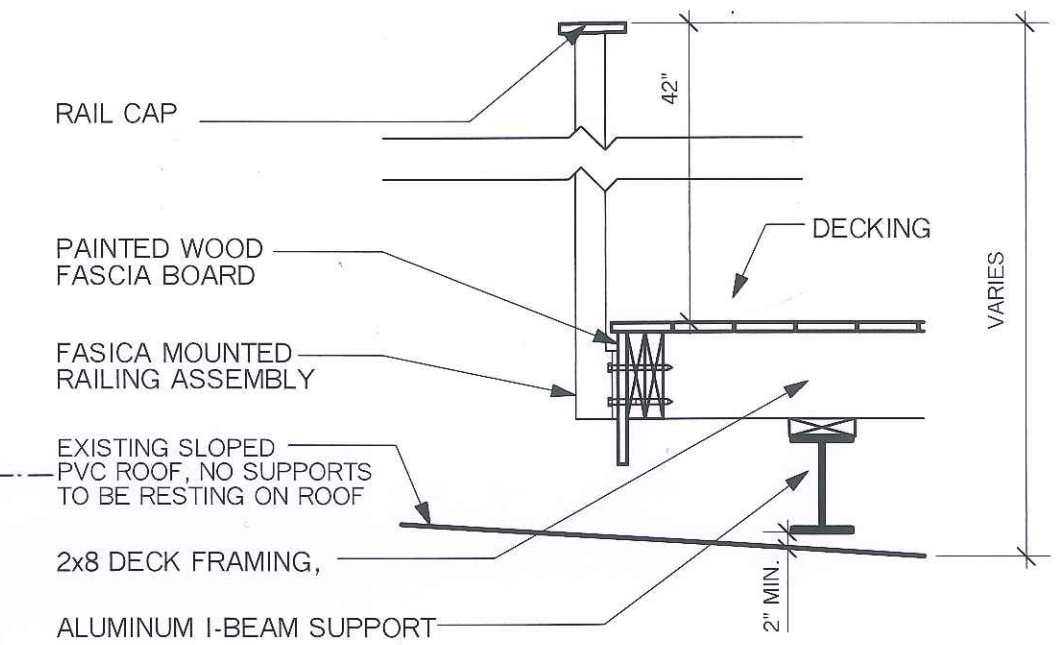
PHOTO D (DIRECTLY ACROSS BUILDING ON BERKELEY STREET)



1	Deck Plan
A-01	Scale: 1/4" = 1'-0"



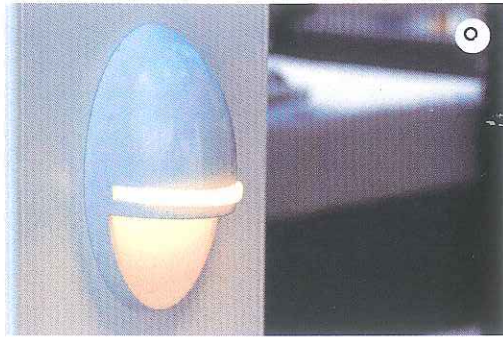
2	Detail @ Parapet & Post Assembly
A-01	Scale: 3/4" = 1'-0"



3	Detail @ Deck Edge (Open Rail)
A-01	Scale: 3/4" = 1'-0"

DATE	JULY 2020
SCALE	AS NOTED

A-01



[Home](#) > [Products](#) > [Lighting](#) > Accent Light

Accent Light

Enhance visibility and safety by adding subtle touches of light to artfully illuminate posts, transition points, and stairs.

No samples are available. Visit your [local dealer](#) or [retailer](#) to see and learn more about this product.

Color



Share this color



Share this page

★★★★★ (0) Write a review

Details

Dimensions

Overall Dimensions
(width x depth x height)
2-3/4" x 2-1/2" x 5"

Installation & Warranty

FAQs

Reviews

GET INSPIRED

Let Your Imagination Run Wild



1 / 6

Azek Arbor Collection in [Acacia](#) and [Autumn Chestnut](#) with [Island Cap](#) and [Accent Lights](#)

Call it an
Investment in
Better Value

CALCULATE COST

Find a Contractor

Let us match you with one of our highly-skilled TimberTech Pros.

Enter city or zip code

Search

Cherry

Spectrum

Railing System

A Square Post System With Many Options

COST: \$ \$ \$ \$

The Spectrum System features pre-drilled square posts and fittings to surface or fascia mount the posts and mount handrails. The cable infill offers a choice between using 1/8" or 5/32" cable with HandiSwage™ Studs. You can find installation instructions at www.atlantisrail.com or by asking your Atlantis Rail Sales Representative for more information. Customers must source their own hardwood flat handrail (minimum 2" x 4"). Choose from the colors below.



COLOR SELECTION

STANDARD



SPECIAL



Colors from top, left to right: Black, Metallic Silver, Pure White, Dark Brown, Pebble Grey and Light Brown.

**Uncoated option available upon request.*

CABLE INFILL OPTION

HandiSwage™

The Spectrum System is available using a 5/32" or 1/8" diameter cable and HandiSwage™ Studs, making it one of the simplest and most economical cable railing systems available. All the studs, cable and accessories are made from electro-polished 316L stainless steel for maximum corrosion resistance and durability. For a finished look, we offer a variety of cover nut sets including multiple styles and colors.



FASCIA MOUNT POST KIT COMPONENTS
 A. Spectrum Square Post
 B. Top Mounting Plate Assembly
 C. Plastic Bottom Cap

NOTE: Fascia mounting fasteners & hardware sold separately.

SURFACE MOUNT POST KIT COMPONENTS
 A. Spectrum Square Post
 B. Top Mounting Plate Assembly
 C. Base Cover

NOTE: Surface mounting fasteners & hardware sold separately.

CABLE STABILIZER KIT COMPONENTS
 A. Spectrum Cable Stabilizer
 B. Wood Screws

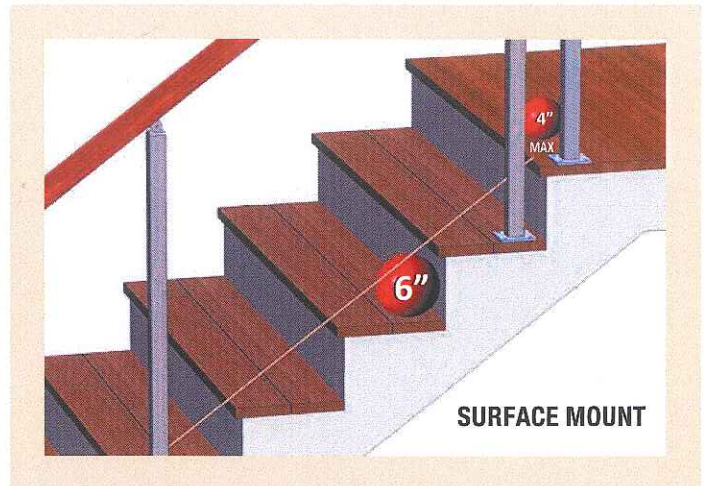
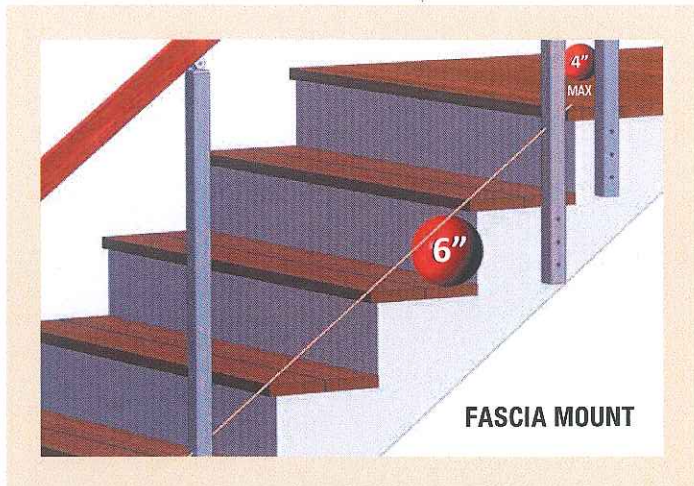
NOTE: Use with surface mount Spectrum posts only.

Spectrum Post Kits Cable Spacing & Heights

Part Number	Post Description	Cable Spacing	Rows of Cable	Actual Post Height	Rendered Rail Height	Height From Surface	Stair Angle
S0904-XX36*	36" Fascia Mount Post Kit	2.625"	12	42"	36"	34.375" +/-	—
S0904-XX38-ST*	38" Fascia Mount Stair Post Kit	2.629" – 2.756"	10	45.75"	34" – 36"	39.625" +/-	32° - 38°
S0904-XX42*	42" Fascia Mount Post Kit	2.688"	14	48"	42"	40.375" +/-	—
S0904-XX42-EC	42" Fascia Mount End Post Kit	2.688"	14	48"	42"	40.375" +/-	—
S0905-XX36*	36" Surface Mount Post Kit	2.625"	12	34.50"	36"	34.50"	—
S0905-XX38-ST*	38" Surface Mount Stair Post Kit	2.629" – 2.756"	10	38.125"	34" – 36"	38.125"	32° - 38°
S0905-XX42*	42" Surface Mount Post Kit	2.688"	14	40.50"	42"	40.50"	—
S0905-XX45*	36" Surface Mount Cable Stabilizer Kit	2.625"	12	34.50"	36"	34.50"	—
S0905-XX46*	42" Surface Mount Cable Stabilizer Kit	2.688"	14	40.50"	42"	40.50"	—

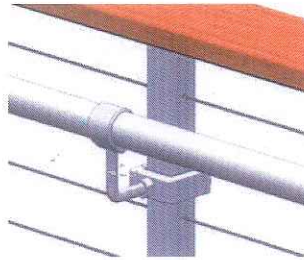
*"XX" in the part number is the color designation. Replace with "BK" for black, "MT" for metallic silver, "WH" for white, "BR" for dark brown or "SP" for one of the special colors.

For more information on Spectrum post and stabilizer kits, see the Atlantis Rail Stock Post Reference Sheet on page 43.



ADA HANDRAIL MOUNTING BRACKET

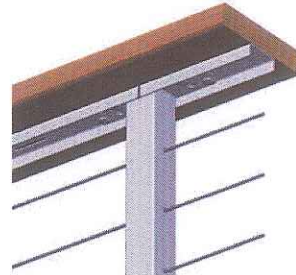
The ADA Handrail Mounting Bracket features a clamp that fits onto a Spectrum post and allows for the attachment of rail end and mid support fittings. These supports accept a 1-1/2" stainless steel tube which enables the Spectrum System to be ADA compliant. The clamp is powder-coated to match the post color.



S0904-XX60* (clamp)
& **S0901-0401 (rail mid support)**

REINFORCING CHANNEL

This channel is used in applications where the handrail needs additional structural reinforcement. It fits over the Top Mounting Plate Assembly and the screws can be mounted through the slots running the length of the channel and into the handrail. The Reinforcing Channel is powder-coated to match the post color and available in 48" lengths and can be cut to size. The 36" surface mount post requires a spacing block (S0904-XX58*). Spacing block sold separately with fasteners.



S0904-XX54*

We do not recommend the use of artificial lumber. Use at the installer/end users' own risk.

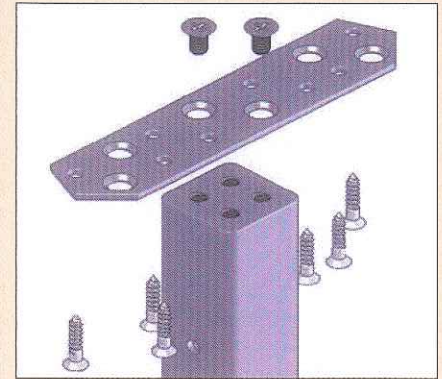
WIDE MOUNTING PLATE

The Wide Mounting Plate is twice the width of the standard mounting plate and is used in applications where a wider top rail is desired. The plate is powder-coated to match the post color. Additional wood screws are included.



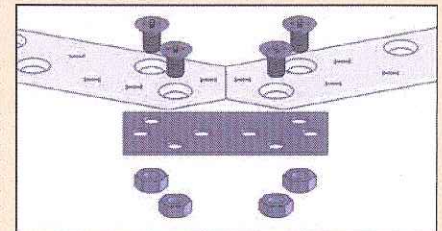
S0904-XX53*

* "XX" in the part number is the color designation. Replace with "BK" for black, "MT" for metallic silver, "WH" for white, "BR" for dark brown or "SP" for one of the special colors.



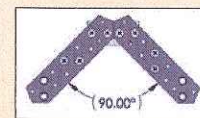
Top Mounting Plate Assembly
(fasteners included)

This assembly allows for the easy installation of a customer supplied flat top rail. Each plate is precision machined with matching hole patterns for easy installation to posts and handrails. A stainless plate is fastened to the post and wood screws are then drilled up into the top rail.

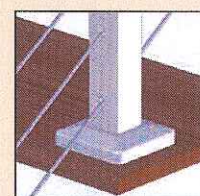


Corner Mending Plate Set - S0904-XX51*
(fasteners included)

This set is used to join Top Mounting Plate Assemblies on corner posts. The hole patterns match those of the Mounting Plate and attach using the 1/4" screws and nuts.



The mounting plates feature angled ends which allow installers to meet 90° or 135° angles at corners. Corners require double posts.



The base cover can be added once the surface mount post is secured for a finished look.



ATLANTIS[®]
RAIL SYSTEMS



ATLANTIS
RAIL STATION