

An aerial photograph of Hynes Playground, showing a large green field with a baseball diamond and a smaller baseball field. The playground is surrounded by trees and residential houses. The title "Improvements to HYNES PLAYGROUND" is overlaid in white text.

# *Improvements to* **HYNES PLAYGROUND**





# MEETING RECORDING



The Boston Parks and Recreation Department will be recording the meeting and posting to our project webpage for those who are unable to attend the Zoom meeting live.

It is possible that participants may also be recording the meeting with their phones cameras or other devices. If you do not wish to be recorded during this meeting, please keep your microphone and camera off.

# VIRTUAL MEETING ETIQUETTE

We want to ensure this conversation is a pleasant experience for all and that all community members/ stakeholders are comfortable sharing their comments, questions and feedback.

Please be respectful and mindful of each other's time when asking questions/ providing comments, so that all attendees are able to participate in the meeting.

Keep questions/ comments project-specific and not personal to yield solution-driven discussion.

Please wait until all attendees have had the opportunity to ask a question/ provide a comment before providing additional questions/ comments.

You can always set up a conversation with **Allison Perlman**, [Allison.perlman@boston.gov](mailto:Allison.perlman@boston.gov) to further discuss the project or process.

# ZOOM TIPS

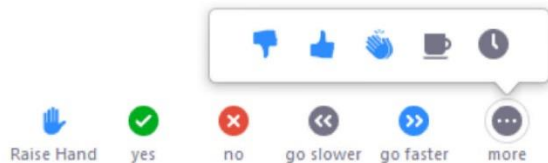
Here is how you can participate during the question and answer part of the presentation.

## DURING THE PRESENTATION:



### VIA WEB:

Turn video on / off.



To use these non-verbal options click on participants (bottom of screen); these options will pop up in side bar.

## DURING THE Q&A:



### JOINING VIA PHONE?

Use \*9 to raise hand to ask for audio / video permission to ask questions or provide comments.



### VIA WEB:

Chat to ask questions / comments or provide responses to poll questions



Raise hand to ask for audio / video permission to ask questions or provide comments.



# AGENDA

---

1

**PROJECT TEAM INTRODUCTION**

2

**PROJECT OVERVIEW**

3

**PRESENTATION**

4

**LISTENING & DISCUSSION**

5

**CLOSING REMARKS & NEXT STEPS**

# PROJECT TEAM

---

## ALLISON PERLMAN

PROJECT MANAGER

[allison.perlman@boston.gov](mailto:allison.perlman@boston.gov) or 617-961-3035

## CHRISTINE BRANDAO

OUTREACH COORDINATOR, EXTERNAL AFFAIRS

[christine.brandao@boston.gov](mailto:christine.brandao@boston.gov) or 617-961-3006

## DAVID WARNER

PRESIDENT/PROJECT MANAGER, WARNER LARSON LANDSCAPE ARCHITECTS

## SAMEER BHOITE

DESIGN DIRECTOR, WARNER LARSON LANDSCAPE ARCHITECTS

## ANTONE ALMEIDA

LANDSCAPE DESIGNER, WARNER LARSON LANDSCAPE ARCHITECTS

## JACK DUGGAN

OFFICE OF NEIGHBORHOOD SERVICES

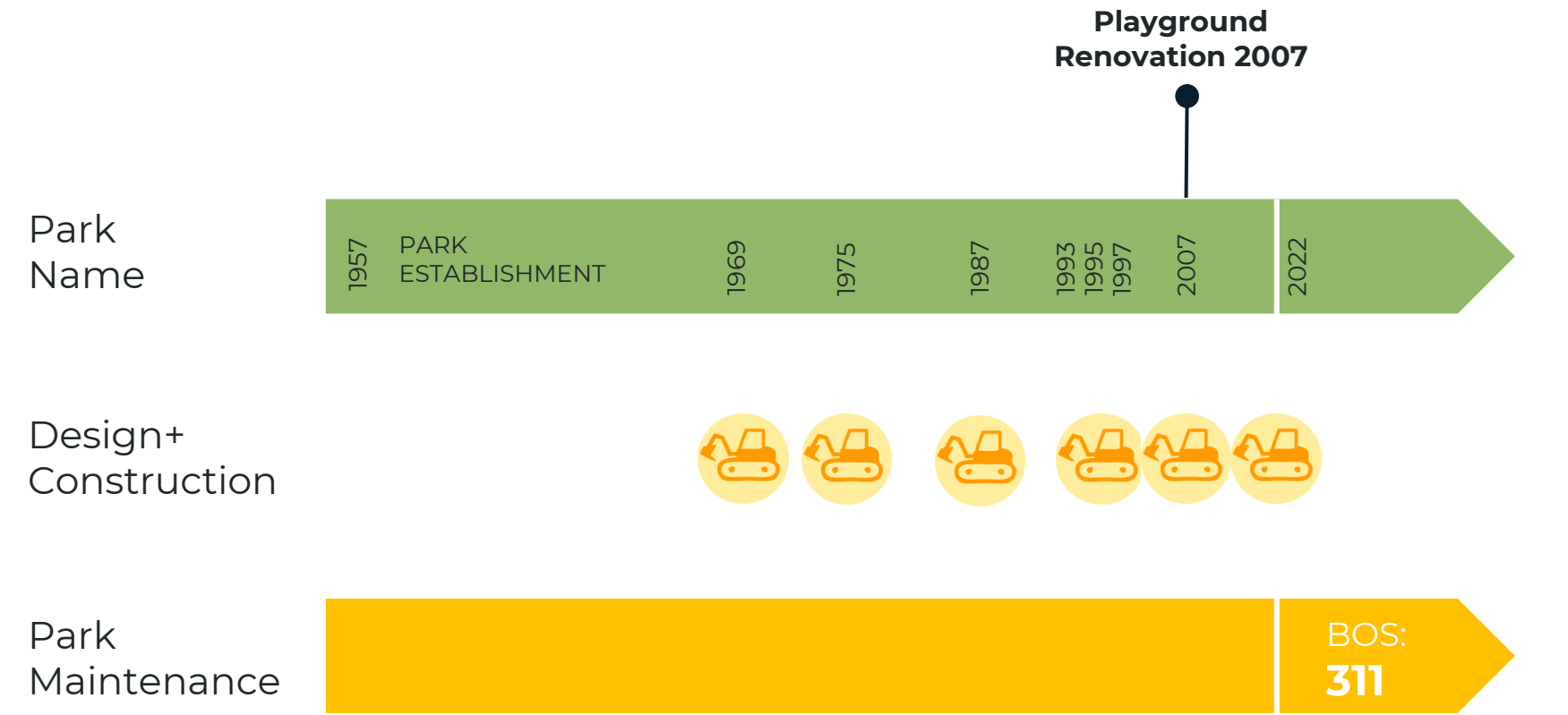
[jack.duggan@boston.gov](mailto:jack.duggan@boston.gov)



# PROJECT OVERVIEW

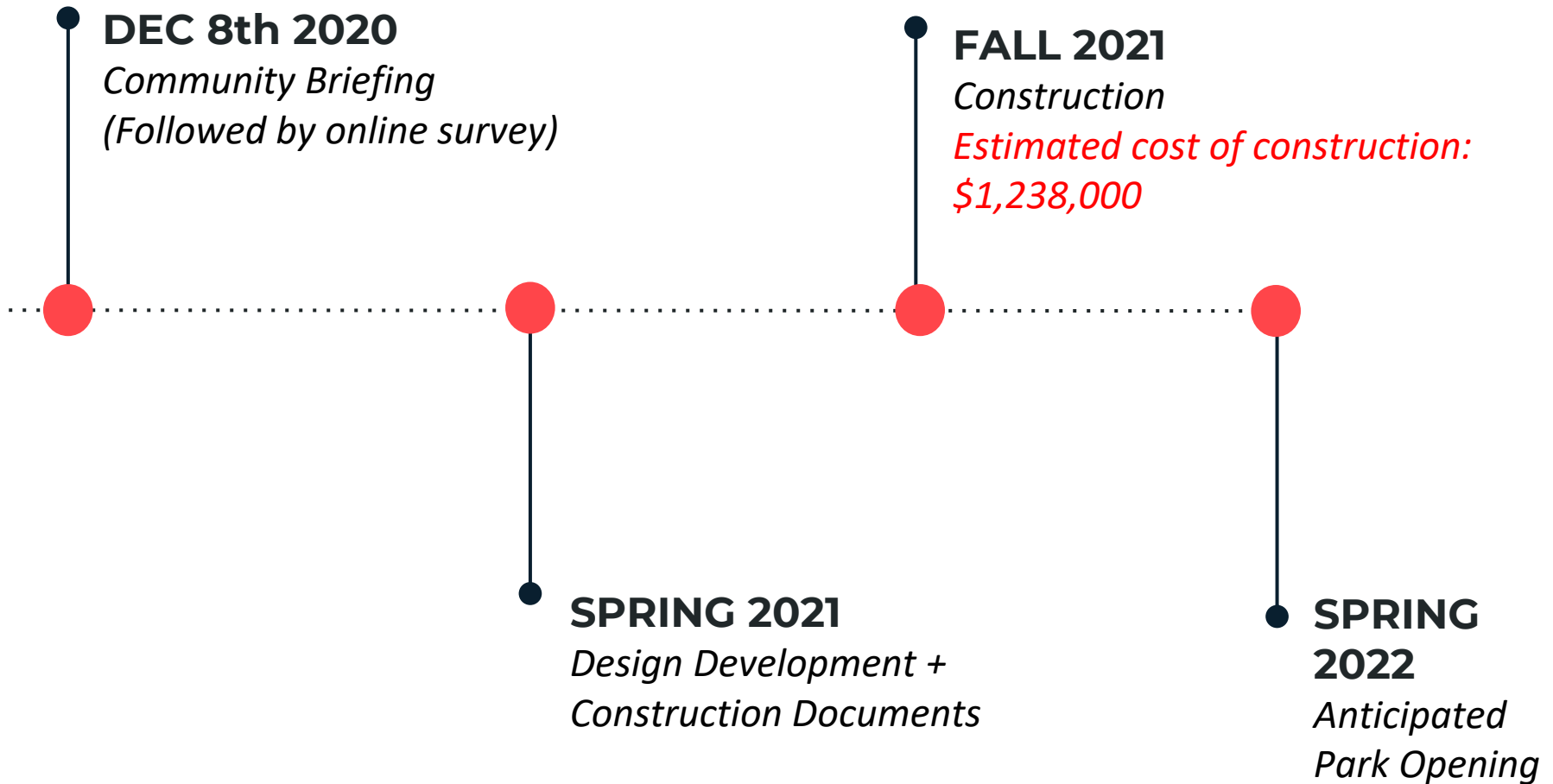


# PARK TIMELINE



# PROJECT SCHEDULE & FUNDING

---







# CITY OF BOSTON PRIORITIES

---

- **Expanding walkable access to parks**
- **Addressing equity**
- **Climate resilience**
- **Health**
- **Housing and community building**



# PARK & RECREATION GOALS

---

- Accessible and available to all
- Diverse, balanced, and efficient mix of uses
- Meaningful and inclusive community engagement
- Adaptive and resilient landscapes
- Promote connections





# **HYNES PLAYGROUND PROJECT SCOPE**

---

- **Improvements to little league baseball and softball fields including drainage**
- **Improvements to backstops, player's benches and infield repairs**
- **Added Scope – Hardcourt (Basketball) Repairs**
- **EXCLUDED – Playground Improvements**



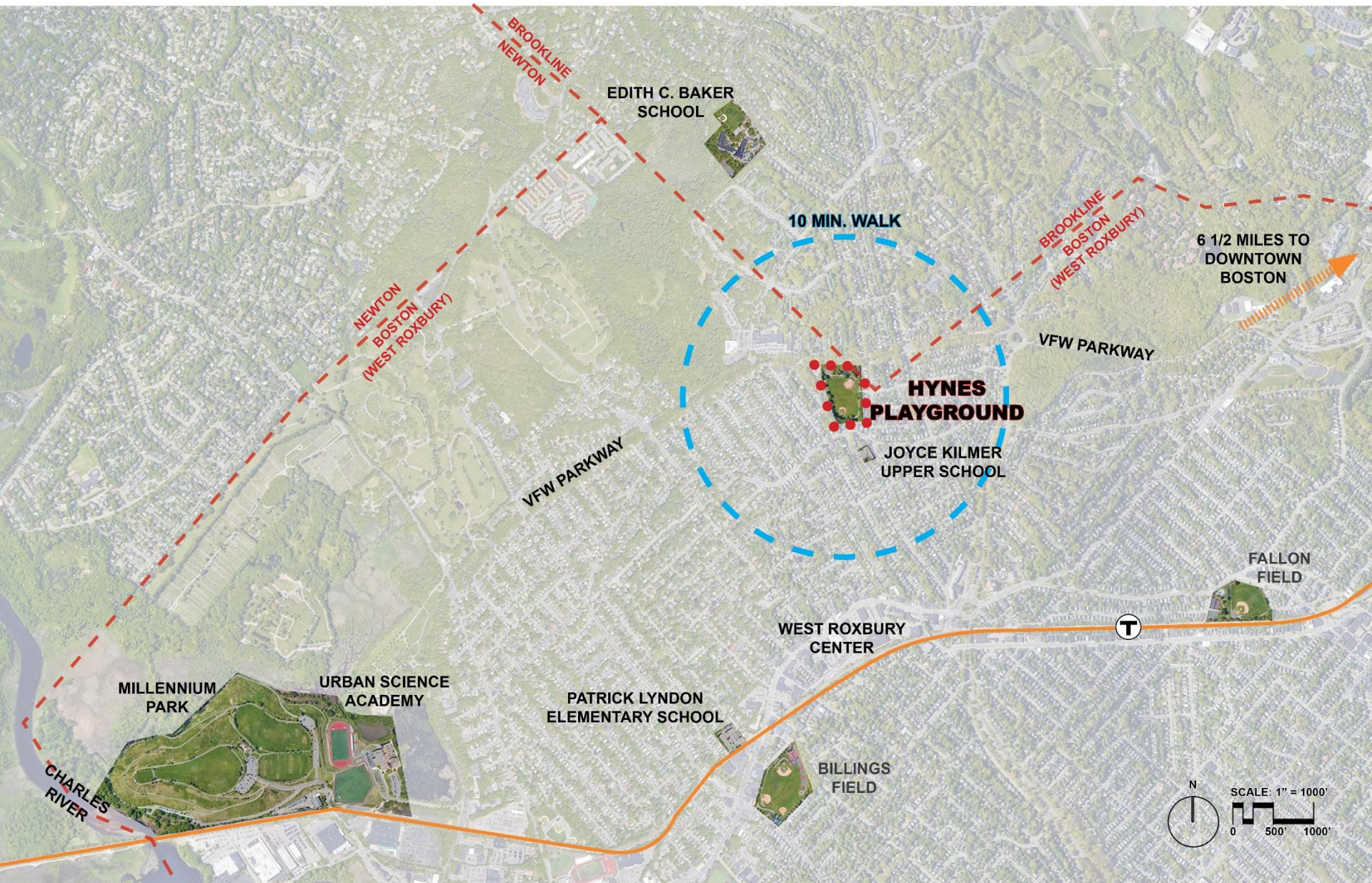


# SITE ANALYSIS AND CONTEXT



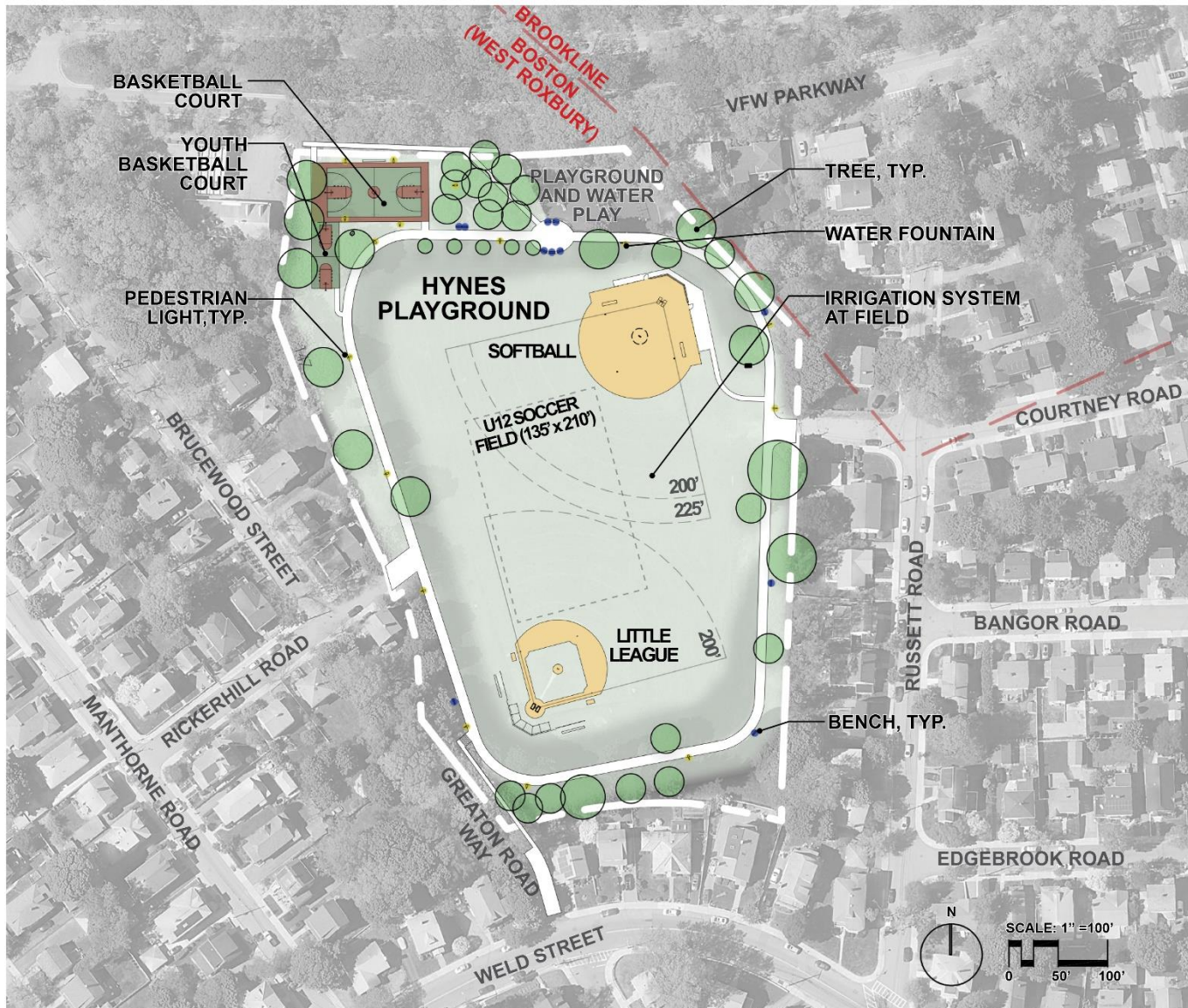


# SITE CONTEXT





# SITE ANALYSIS – PARK FEATURES





# SITE ANALYSIS - CIRCULATION

## LEGEND

PARK  
ENTRANCE  
POINTS



CIRCULATION





# SITE ANALYSIS – SOLAR STUDY



# SITE ANALYSIS - TOPOGRAPHY





# SITE ANALYSIS – EXISTING USES



# SITE ANALYSIS – EXISTING YOUTH FIELD SIZES

---

- **Little League Baseball**
  - 60' Diamond
  - 200'+ from home plate to outfield boundary
- **Softball**
  - 60' Diamond
  - Home plate to outfield boundary
    - **U14** 175'-200'+
    - **High School Fast Pitch** 225'+
- **Soccer U12**
  - 135' width
  - 210' length

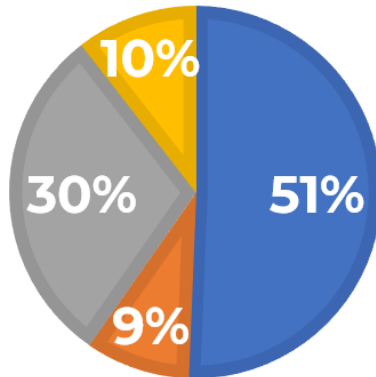
# SITE ANALYSIS – RESERVED FIELD/COURT PROGRAM USES

---

Source: Reservation Master Report from BPRD  
Timeframe: Jan 2019 - Dec 31, 2019

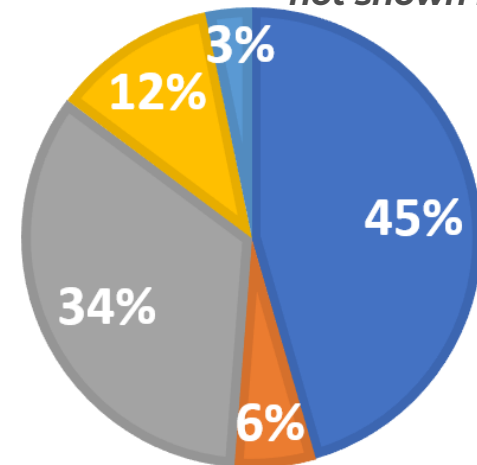
## RESERVED LEAGUE FIELD/COURT USAGE

■ Softball ■ Basketball ■ Little League ■ Soccer



## RESERVED LEAGUE TYPES

■ Youth Softball ■ Youth Basketball  
■ Youth Little League ■ Youth Soccer  
■ Adult Softball  
Adult Soccer (1 Instance, not shown in chart)





# **SITE ANALYSIS – EXISTING CONDITIONS SUMMARY**

---

- **Entrance Paths to Fields (Lacking presence)**
- **Some drainage issues on the fields**
- **Backstop fencing in fair condition**
- **Players benches in poor condition**
- **Cracks in basketball courts**
- **Park lighting in fair condition. No lighting at fields**
- **Walkway loop in fair condition, benches in poor condition**
- **Some mature tree canopy**

# EXISTING CONDITIONS (ACCESS TO FIELDS)

---





# EXISTING CONDITIONS (FIELDS)

---





# EXISTING CONDITIONS (HARD COURTS)

---





# EXISTING CONDITIONS (SITE AMENITIES)

---





# SITE OPPORTUNITIES





# OPPORTUNITIES

---

## PASSIVE FUN

Sloped Lawn  
Amphitheater  
(School Events/Movie  
Nights)



## OUTDOOR FITNESS

Individual Fitness  
Station along walking  
loop



**INCREASED NATURAL  
VEGETATION**  
(Outer perimeter of the  
walking loop)



**Picnic Plaza (Out of Scope)**



**Consolidated Fitness Area  
along walking loop**





# SITE AMENITIES OPTIONS

---

## BENCHES



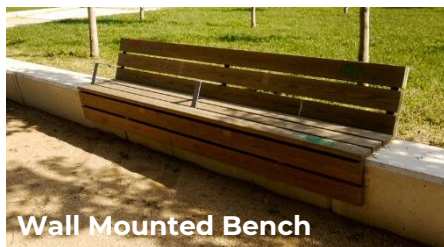
Metal Bench



Wood Bench



Recycled Plastic Bench



Wall Mounted Bench

## SPECTATOR SEATING



Aluminum Player's Bench



Terraced Concrete Seating



Dugout Shelter

## PLAZA SEATING (NOT IN SCOPE)



Café Tables (Wood)



Flex / Movable Seating (Metal)



Picnic Table (Recycled Plastic)



# LISTENING & DISCUSSION

Help us build great parks.  
Let us know what matters to you.

# ZOOM TIPS

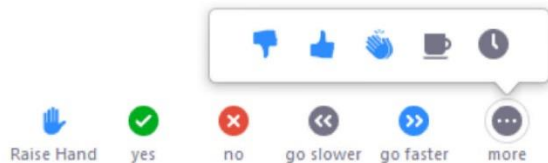
Here is how you can participate during the question and answer part of the presentation.

## DURING THE PRESENTATION:



### VIA WEB:

Turn video on / off.



To use these non-verbal options click on participants (bottom of screen); these options will pop up in side bar.

## DURING THE Q&A:



### JOINING VIA PHONE?

Use \*9 to raise hand to ask for audio / video permission to ask questions or provide comments.



### VIA WEB:

Chat to ask questions / comments or provide responses to poll questions



Raise hand to ask for audio / video permission to ask questions or provide comments.





# THANK YOU!

For questions, maintenance requests or  
concerns regarding any of our  
parks contact 311



December 8, 2020  
Boston Parks and Recreation



# APPENDIX - FIELD SIZES

EXISTING SIZES (YOUTH)	OTHER FIELD SIZES
<ul style="list-style-type: none"><li>• <b>Little League Baseball</b><ul style="list-style-type: none"><li>• 60' Diamond</li><li>• 200'+ from home plate to outfield boundary</li></ul></li><li>• <b>Softball</b><ul style="list-style-type: none"><li>• 60' Diamond</li><li>• Home plate to outfield boundary<ul style="list-style-type: none"><li>• <b>U14</b> 175'-200'+</li><li>• <b>High School Fast Pitch</b> 225'+</li></ul></li></ul></li><li>• <b>Soccer U12</b><ul style="list-style-type: none"><li>• 135' width</li><li>• 210' length</li></ul></li></ul>	<ul style="list-style-type: none"><li>• <b>Baseball</b><ul style="list-style-type: none"><li>• 90' diamond</li><li>• 300'+ from home plate to outfield boundary</li></ul></li><li>• <b>Softball</b><ul style="list-style-type: none"><li>• 60' Diamond</li><li>• Home plate to outfield boundary:<ul style="list-style-type: none"><li>• 250'-275' Female slow pitch</li><li>• 275'-300' Male slow pitch</li></ul></li></ul></li><li>• <b>Soccer U13-U19</b><ul style="list-style-type: none"><li>• Field width 150'-300'</li><li>• Field length 300'-390'</li></ul></li><li>• <b>Youth 5v5 Flag Football</b><ul style="list-style-type: none"><li>• 75' width</li><li>• 180' length</li></ul></li><li>• <b>Boys Lacrosse</b><ul style="list-style-type: none"><li>• 180' width</li><li>• 330' length</li></ul></li><li>• <b>Girls Lacrosse</b><ul style="list-style-type: none"><li>• 180' width</li><li>• 330' length</li></ul></li></ul>