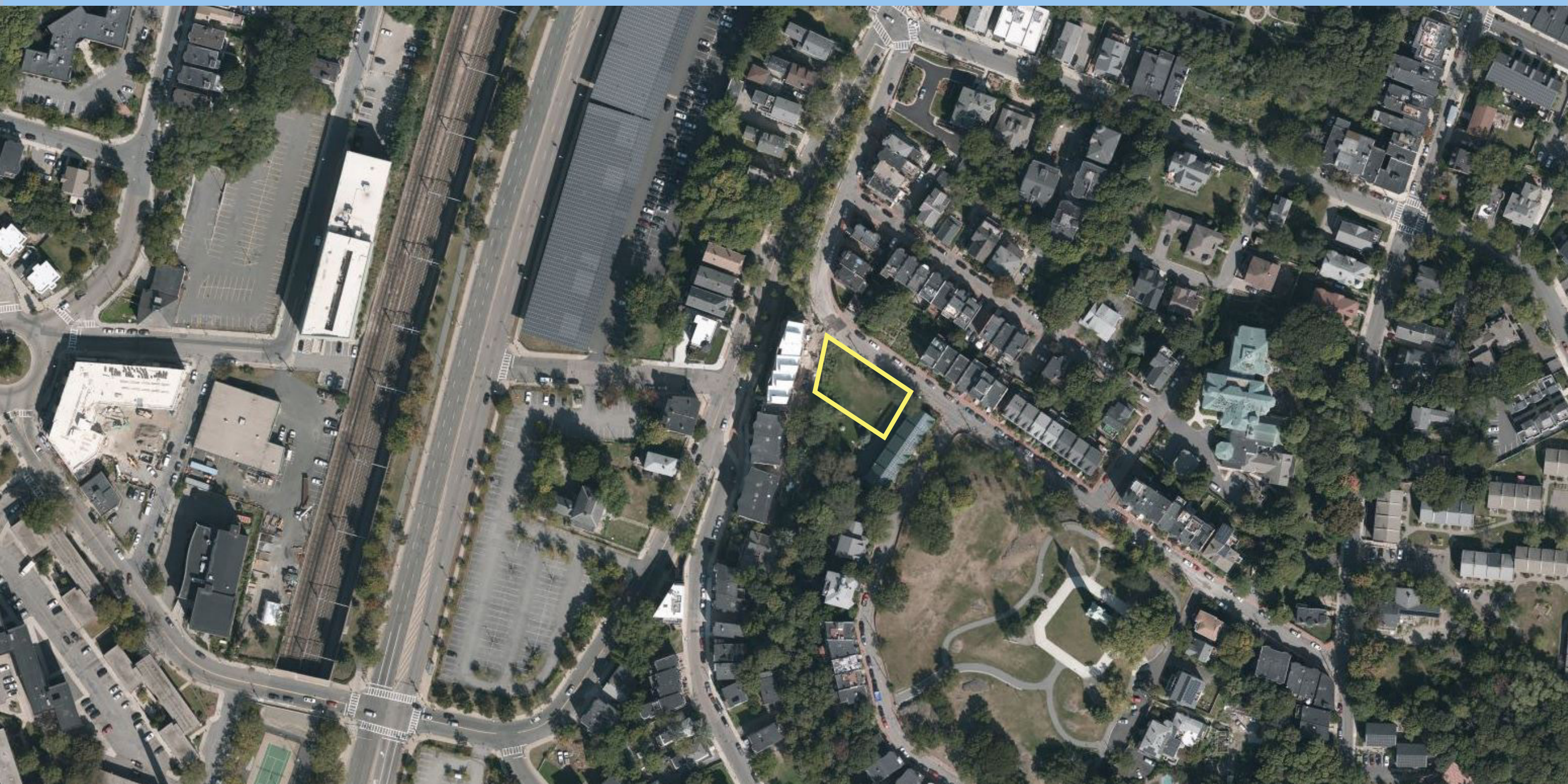


PAULA TITUS PARK



MEETING RECORDING



The Boston Parks and Recreation Department will be recording the meeting and posting to our project webpage for those who are unable to attend the Zoom meeting live.

It is possible that participants may also be recording the meeting with their phones cameras or other devices. If you do not wish to be recorded during this meeting, please keep your microphone and camera off.

VIRTUAL MEETING ETIQUETTE

We want to ensure this conversation is a pleasant experience for all and that all community members/ stakeholders are comfortable sharing their comments, questions and feedback.

Please be respectful and mindful of each other's time when asking questions/ providing comments, so that all attendees are able to participate in the meeting.

Keep questions/ comments project-specific and not personal to yield solution-driven discussion.

Please wait until all attendees have had the opportunity to ask a question/ provide a comment before providing additional questions/ comments.

You can always set up a conversation with **Nathan Frazee, Nathan.Frazee@boston.gov** to further discuss the project or process.

ZOOM TIPS

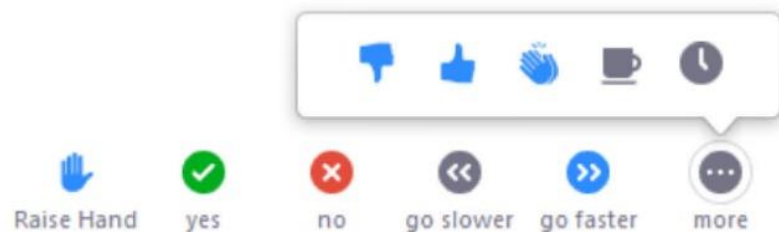
Here is how you can participate during the question and answer part of the presentation.

DURING THE PRESENTATION:



VIA WEB:

Turn video on / off.



To use these non-verbal options click on participants (bottom of screen); these options will pop up in side bar.

DURING THE Q&A:



JOINING VIA PHONE?

Use *9 to raise hand to ask for audio / video permission to ask questions or provide comments.



VIA WEB:

Chat to ask questions / comments or provide responses to poll questions



Raise hand to ask for audio / video permission to ask questions or provide comments.

PROJECT OVERVIEW

AGENDA

1

PROJECT TEAM INTRODUCTION

2

PROJECT OVERVIEW

3

PRESENTATION

4

LISTENING & DISCUSSION

5

CLOSING REMARKS & NEXT STEPS

PROJECT TEAM

NATHAN FRAZEE

PROJECT MANAGER

nathan.frazee@boston.gov or 617-961-3167

CHRISTINE BRANDAO

OUTREACH COORDINATOR, EXTERNAL AFFAIRS

christine.brandao@boston.gov or 617-961-3006

KAILA BACHMAN

Principal, CBA Landscape Architects LLC

JOCELYN WOLFF

Landscape Designer, CBA Landscape Architects LLC

FAISA SHARIF

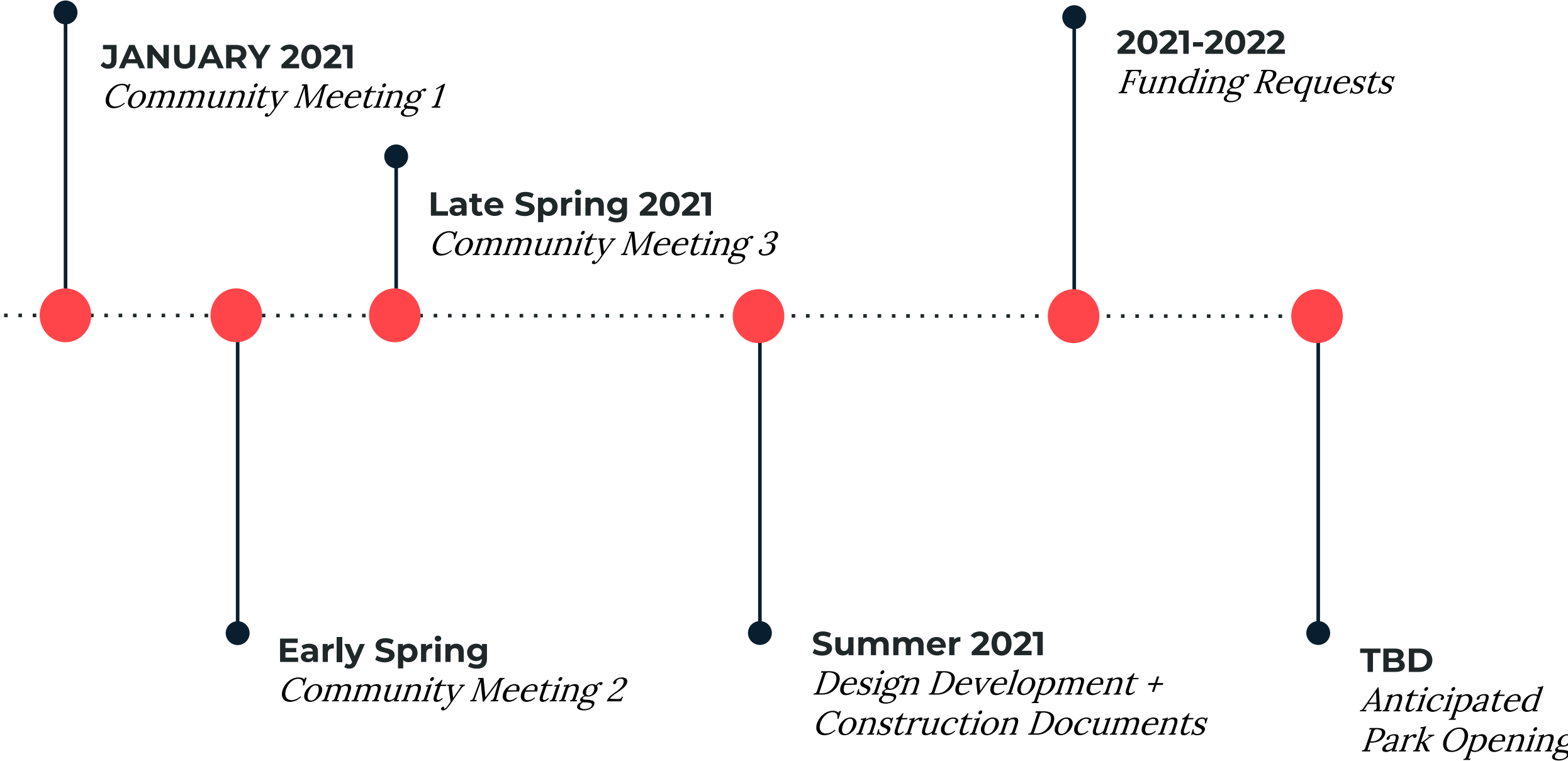
OFFICE OF NEIGHBORHOOD SERVICES

faisa.sharif@boston.gov



PROJECT SCHEDULE & FUNDING

CPA Funding Received to Date:
\$35,000





CITY OF BOSTON PRIORITIES

- **Expanding walkable access to parks**
- **Addressing equity**
- **Climate resilience**
- **Health**
- **Housing and community building**



PARK & RECREATION GOALS

- Accessible and available to all
- Diverse, balanced, and efficient mix of uses
- Meaningful and inclusive community engagement
- Adaptive and resilient landscapes
- Promote connections



CONTEXT

NEIGHBORHOOD CONTEXT

LEGEND

 PAULA TITUS PARK

 PARKS

1. Highland Park
2. Margaret Wright Memorial Garden
3. St. Monica's Park
4. Marcella Playground
5. Southwest Corridor Park
6. Jackson Square Playground
7. Alvah Kittredge Park
8. McLaughlin Playgound
9. Lambert Avenue Playground
10. Cedar Square Park
11. Malcom X Park
12. Jeep Jones Park
13. Roxbury Heritage State Park
14. Gibbons Playground
15. Misson Hill Playground
16. Mozart Street Playground
17. Justice Edwards O. Gourdin Veterans Memorial Park
18. St. James Street Park
19. Kevin. W. Fitzgerald Park
20. Horatio Harris Park
21. Jefferson Playground
22. Forbes Street Playground
23. Madison Park

 SCHOOL

 COMMUNITY GARDEN

 PROPOSED ACD
Highland Park Architectural
Conservation District

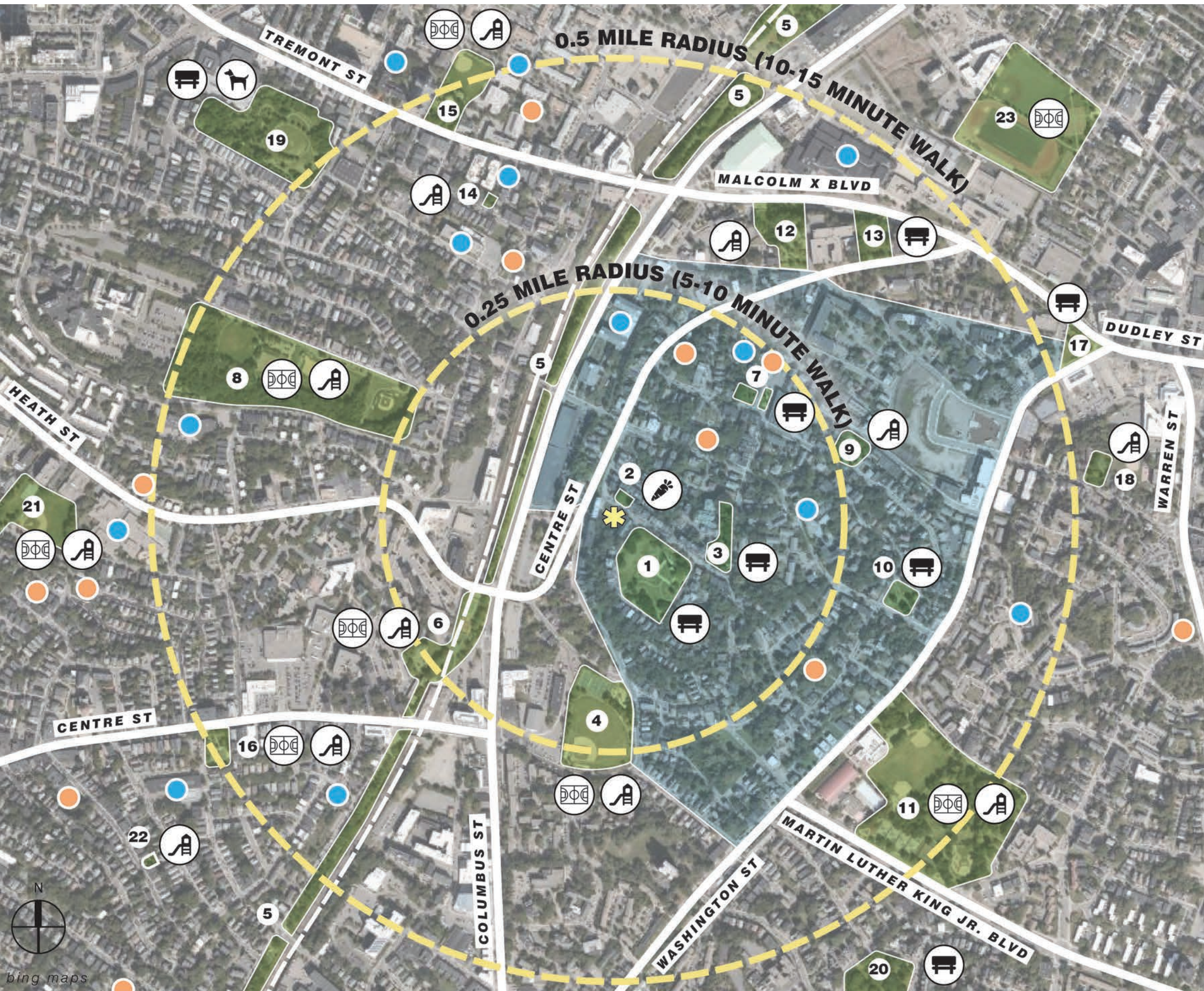
 PLAYGROUND

 PASSIVE PARK

 COMMUNITY GARDEN

 SPORTS FIELDS/COURTS

 DOG FACILITY



IMMEDIATE SURROUNDINGS



LEGEND

- PARKS
- RESIDENTIAL
- INSTITUTIONAL
- ▼ PUBLIC ENTRY
- ▼ PRIVATE ENTRY
- ⬅️➡️ CIRCULATION

EDGE CONDITION

- DEAD-END
- - - FENCING

KEY SITES/BUILDINGS

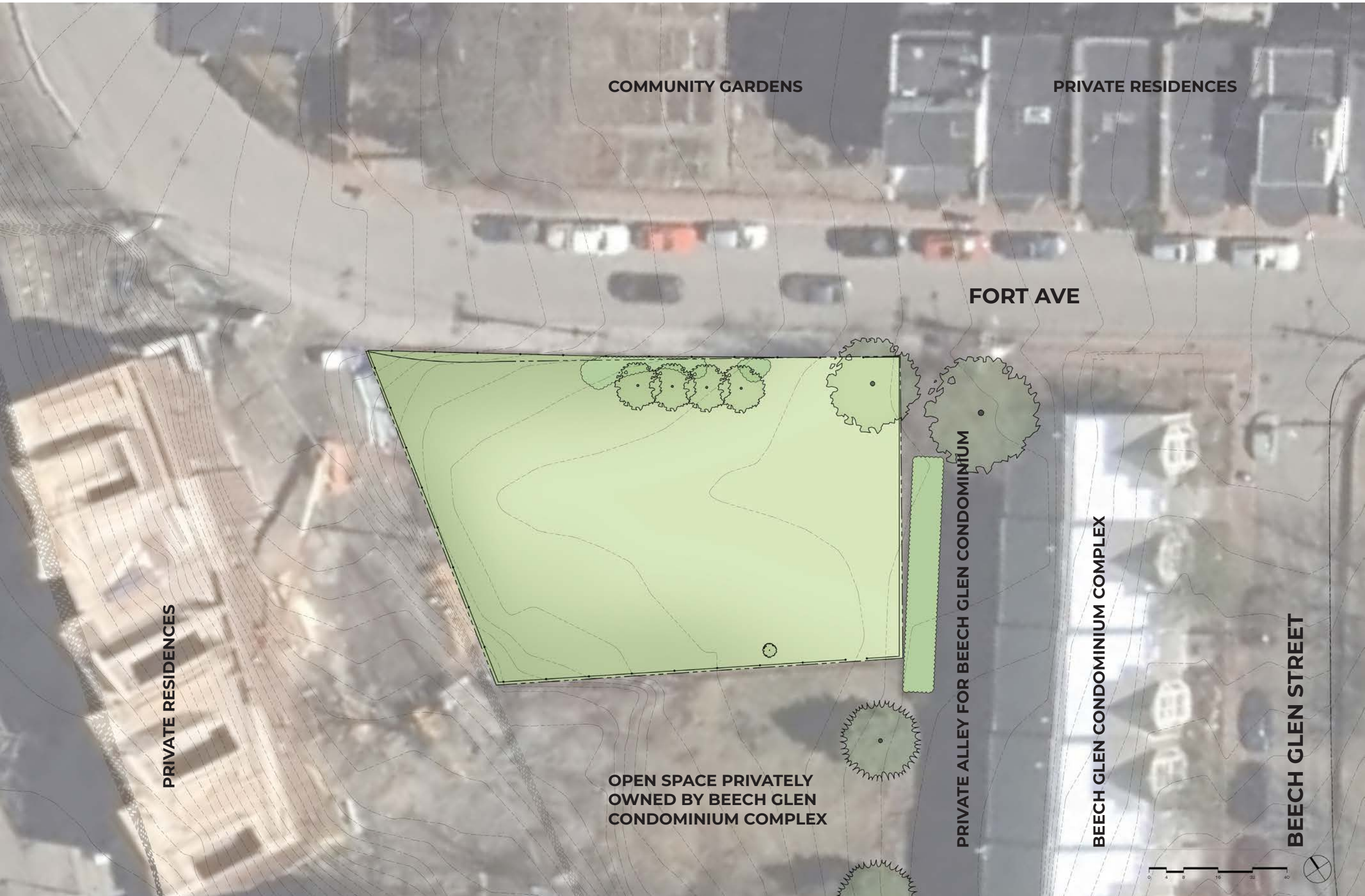
1. Fort Hill Tower and Highland Park
2. Margaret Wright Memorial Garden
3. St. Monica's Park
4. Emmanuel College Notre Dame Campus and the William Lloyd Garrison House Historic Landmark
5. Southwest Corridor
6. Jackson Square Park



bing maps

SITE ANALYSIS

EXISTING CONDITIONS



EXISTING CONDITIONS



VIEW OF THE SOUTHEASTERN EDGE CONDITION



VIEW OF THE NORTHWESTERN EDGE CONDITION



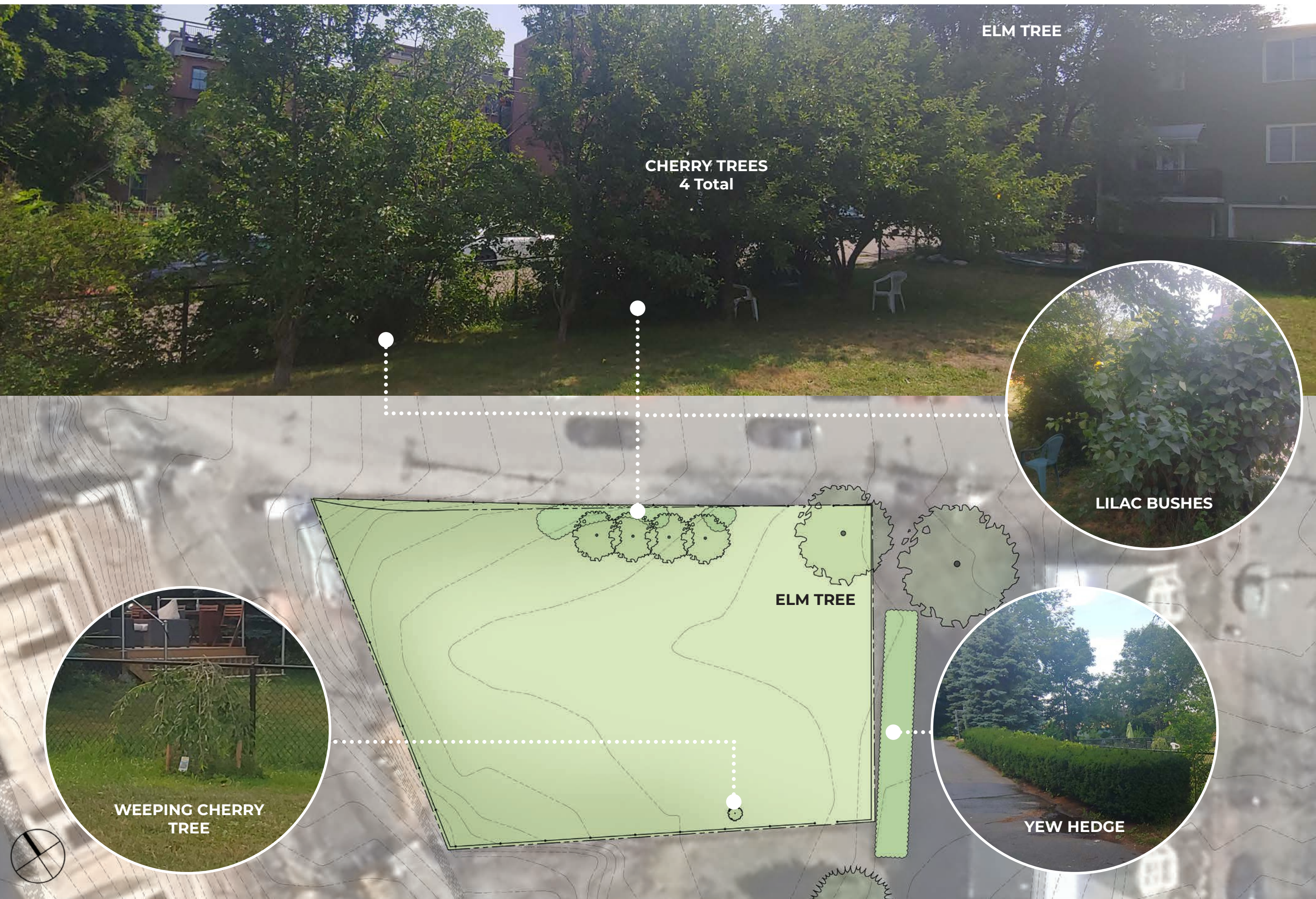
FENCING AND ENTRANCES



SLOPE ANALYSIS



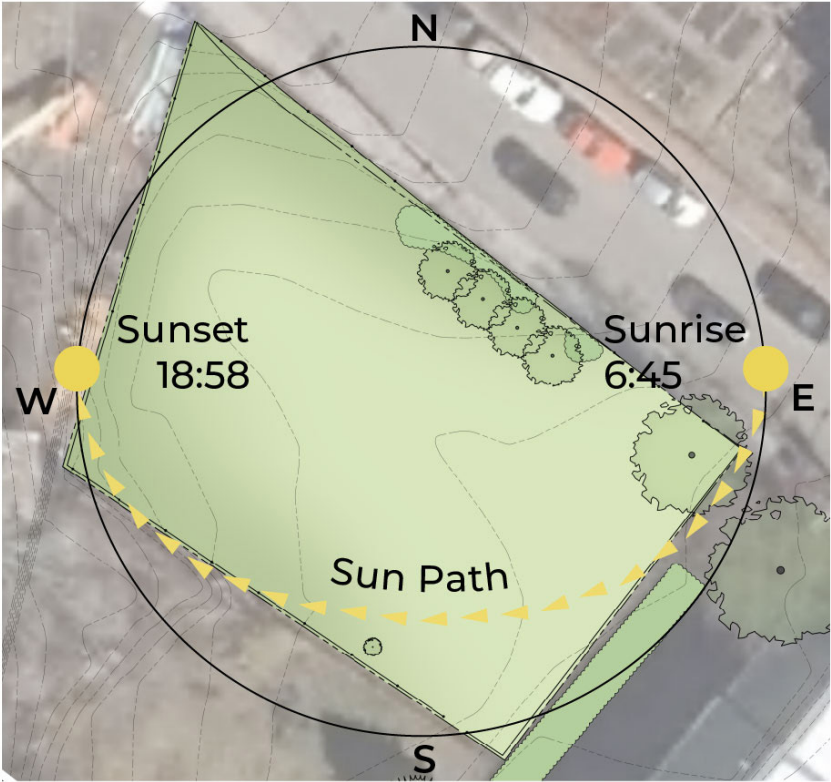
VEGETATION



SUN STUDY

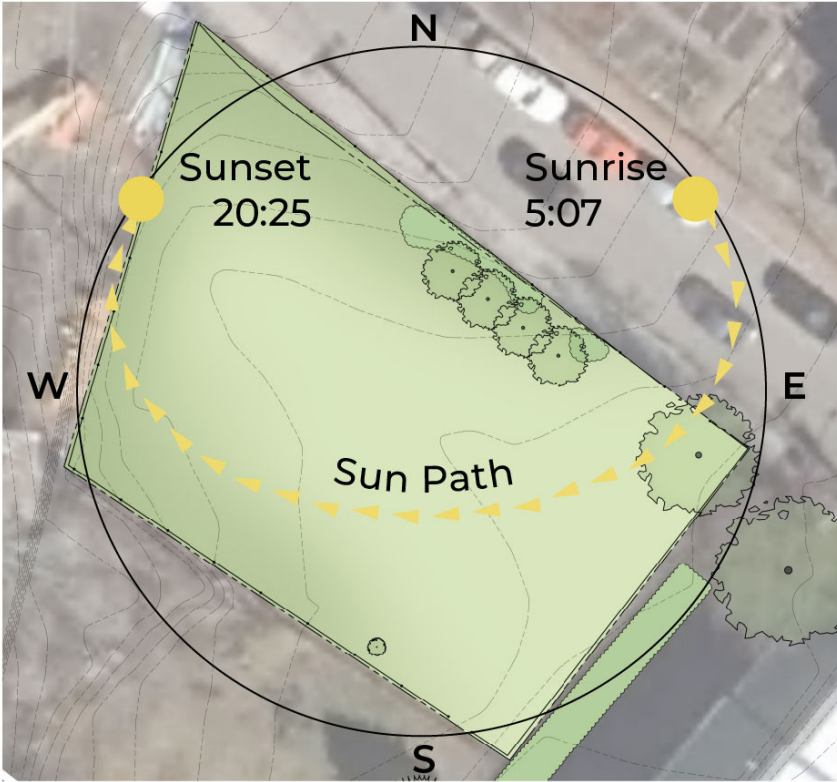
MARCH 21

0:00 2:00 4:00 6:00 8:00 10:00 12:00 14:00 16:00 18:00 20:00 22:00



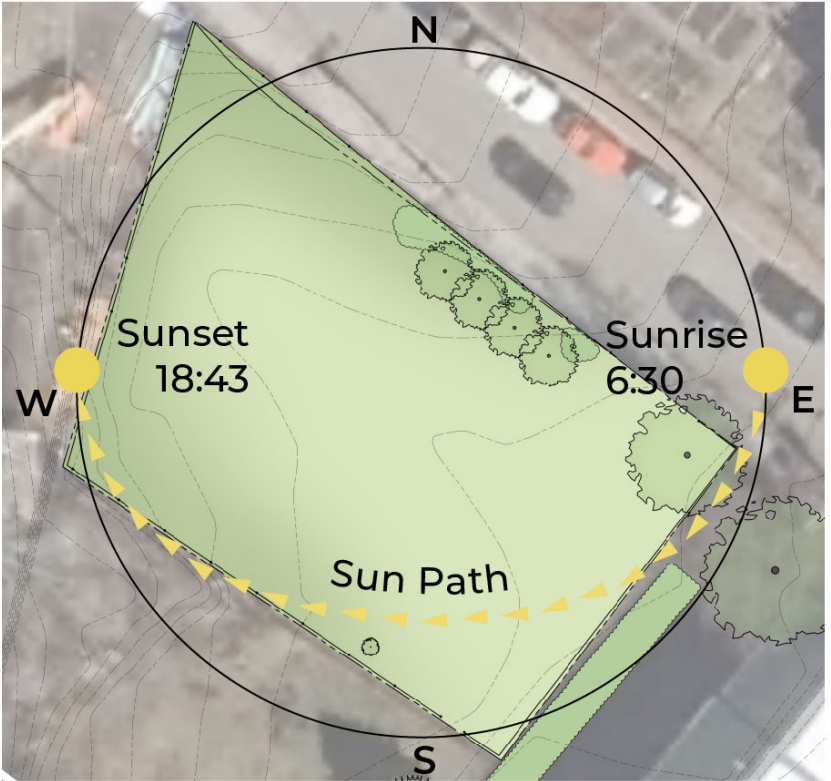
JUNE 21

0:00 2:00 4:00 6:00 8:00 10:00 12:00 14:00 16:00 18:00 20:00 22:00



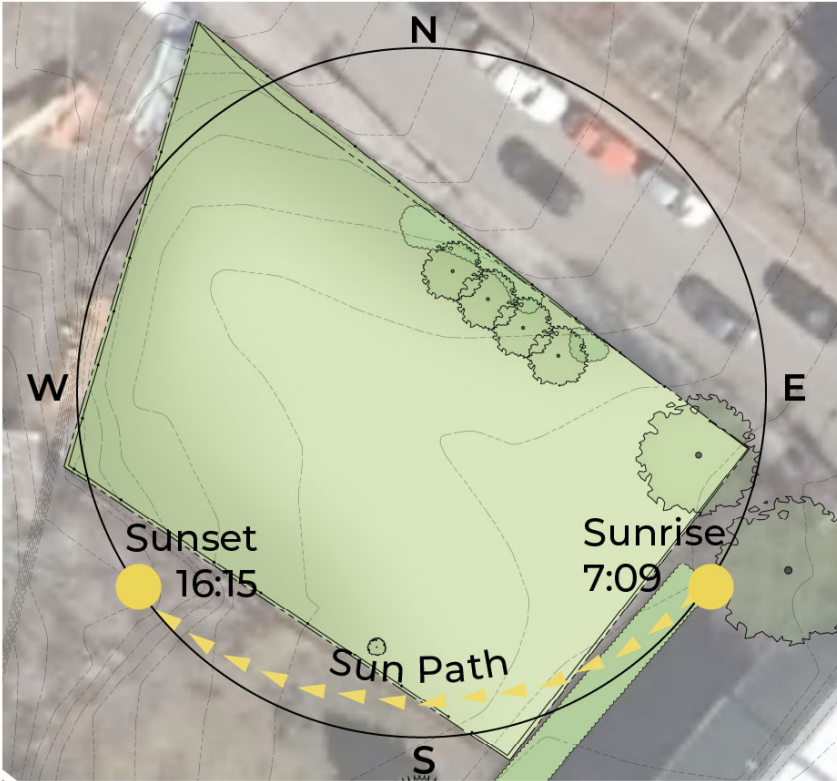
SEPTEMBER 21

0:00 2:00 4:00 6:00 8:00 10:00 12:00 14:00 16:00 18:00 20:00 22:00



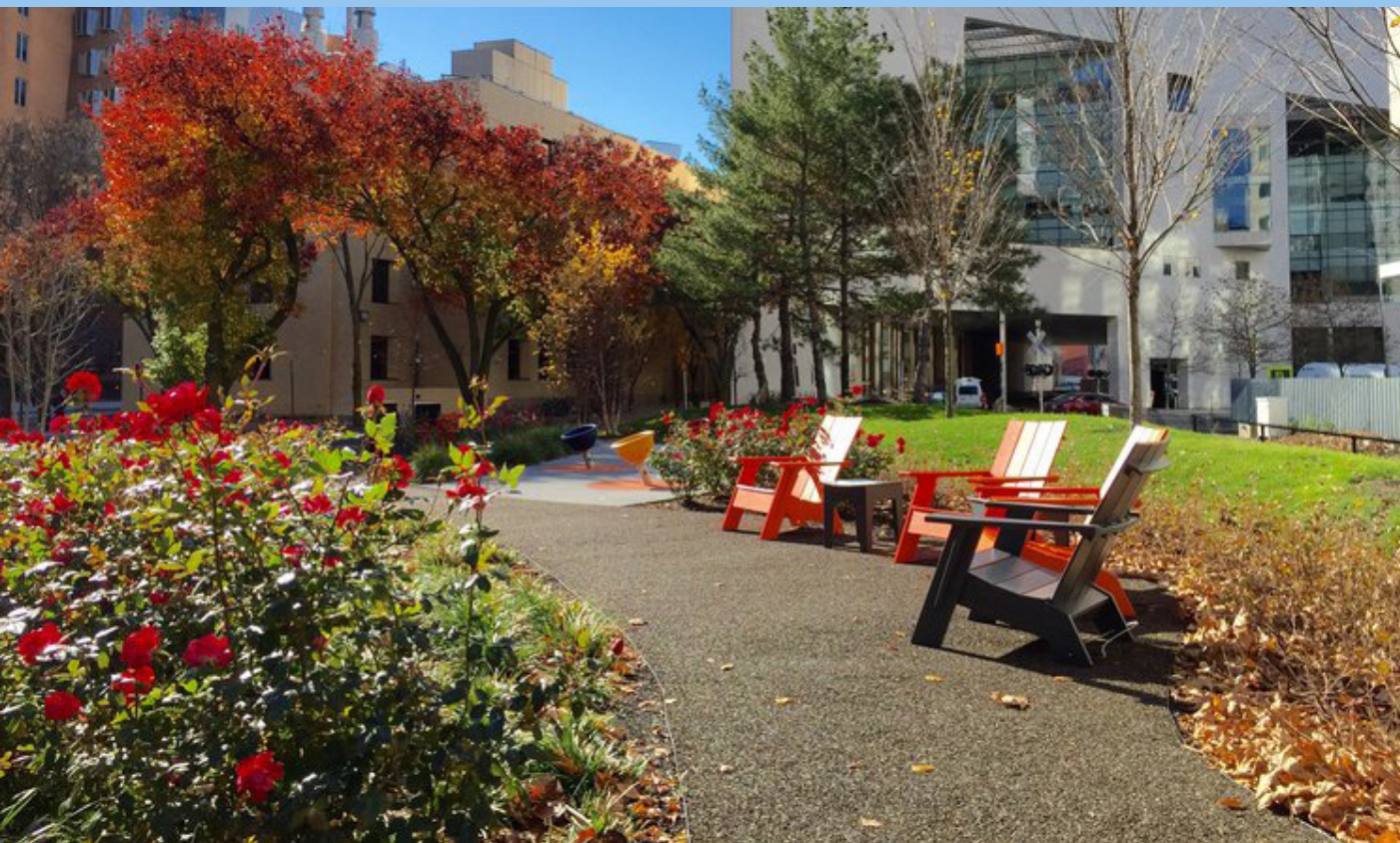
DECEMBER 21

0:00 2:00 4:00 6:00 8:00 10:00 12:00 14:00 16:00 18:00 20:00 22:00

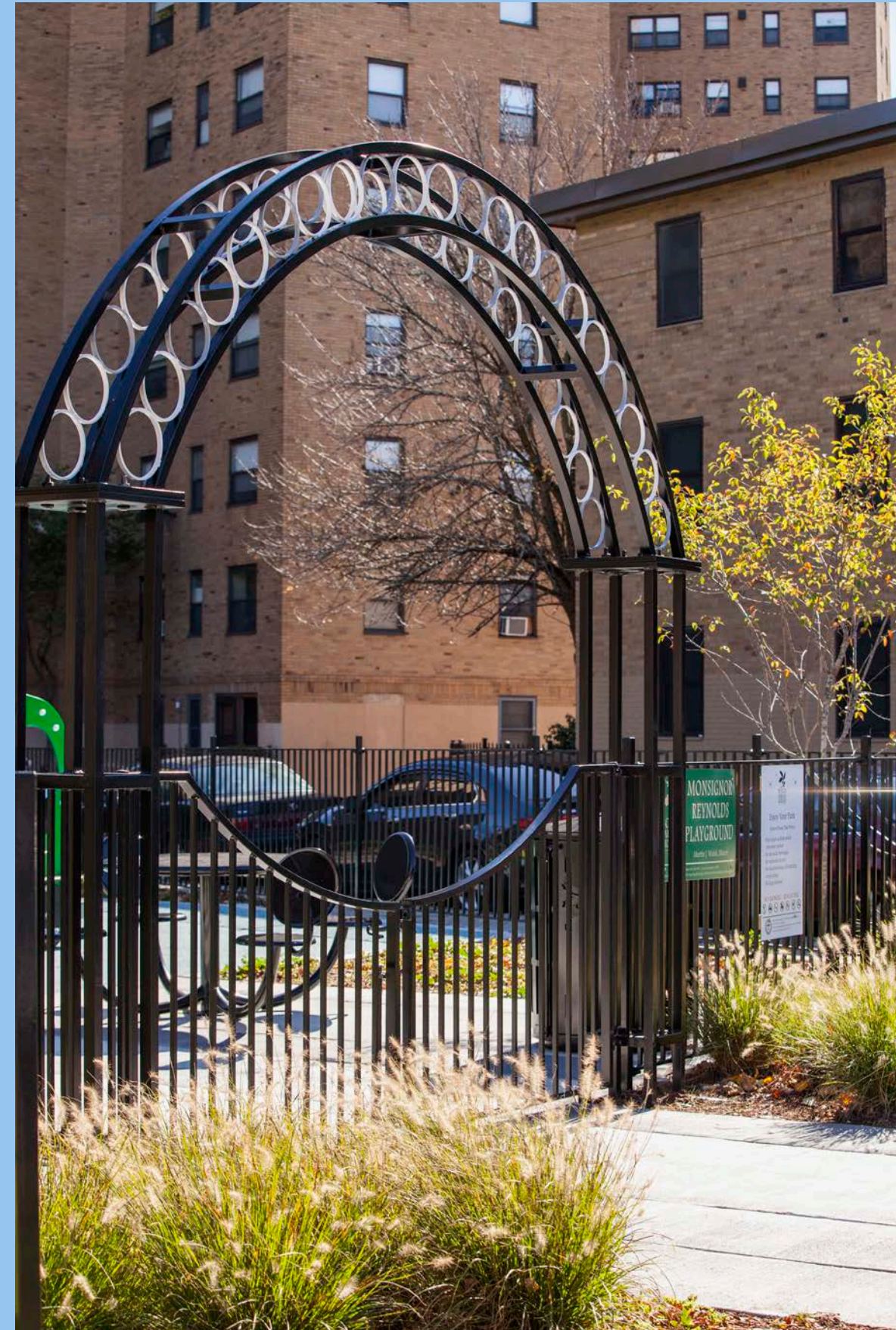


PRECEDENT IMAGES

PASSIVE PARKS



SITE ELEMENTS: SCULPTURAL FEATURES



MEMORIAL ELEMENTS AND FEATURES



SITE ELEMENTS: SHADE STRUCTURES



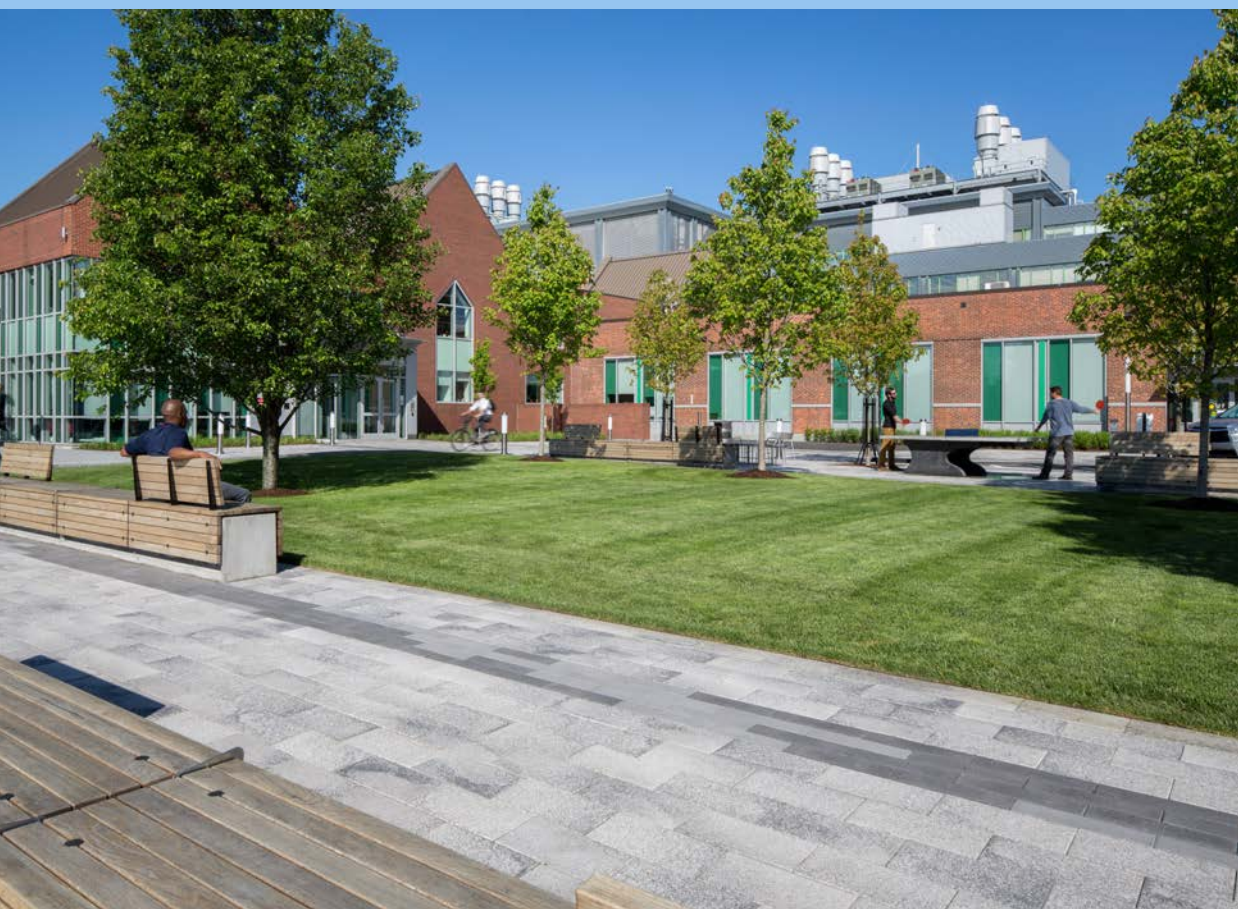
SITE ELEMENTS: SEATING



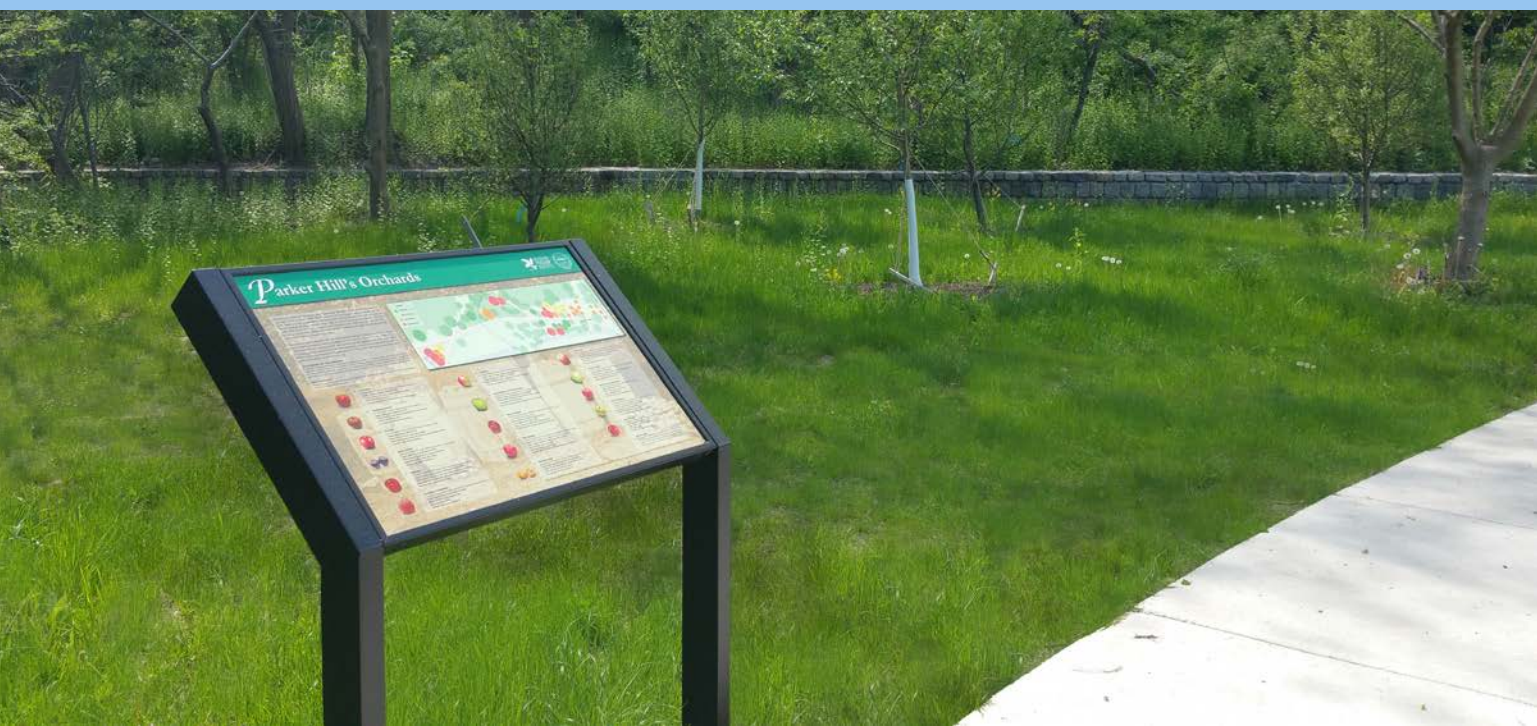
SITE ELEMENTS: PAVING



SITE ELEMENTS: OPEN LAWN AND FLEXIBLE SPACE



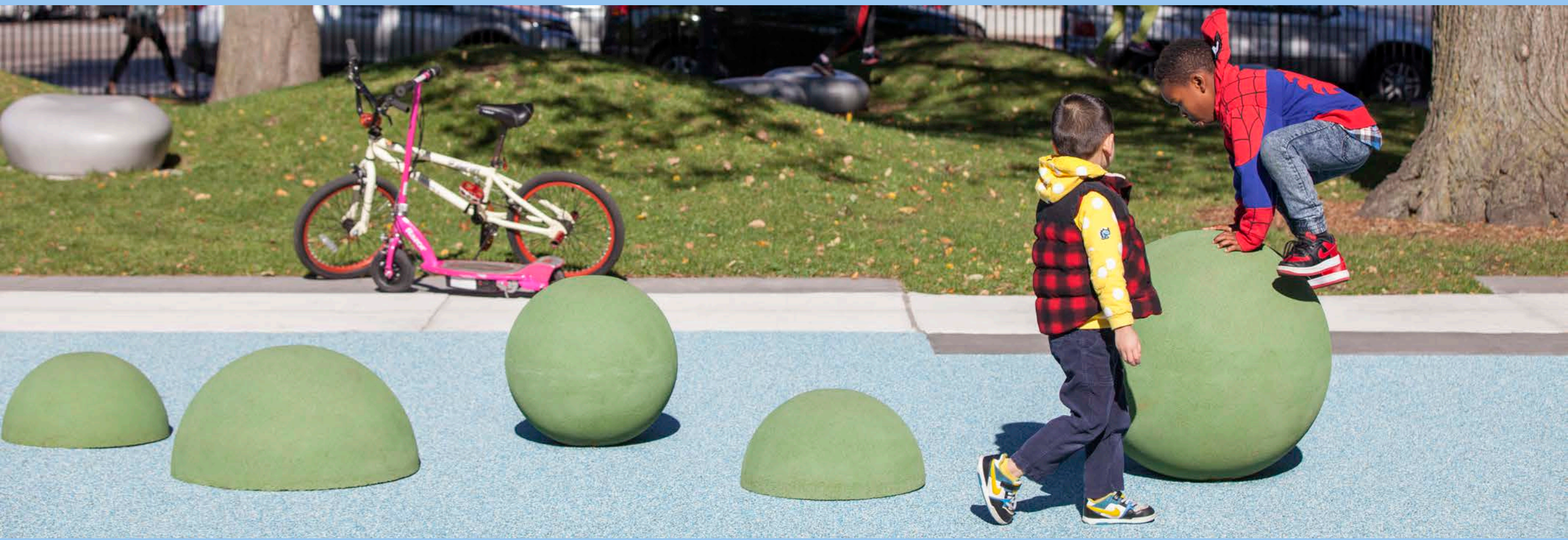
SITE ELEMENTS: INTERPRETIVE SIGNAGE AND WAYFINDING



SITE ELEMENTS: PLAY EQUIPMENT AND MUSICAL INSTRUMENTS



SITE ELEMENTS: SCULPTURAL AND NATURAL PLAY SPACES



A group of people are seated in a circle in a room with large windows and a whiteboard. They appear to be engaged in a discussion or meeting. The image is overlaid with a blue tint.

LISTENING & DISCUSSION

Help us build great parks.
Let us know what matters to you.

ZOOM TIPS

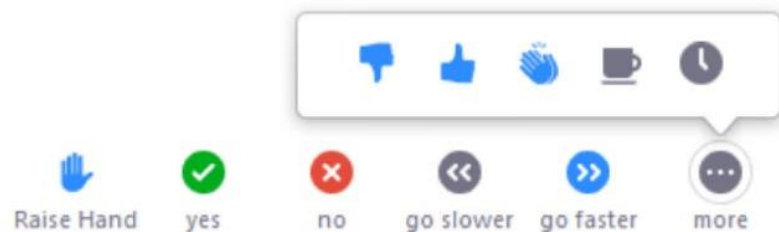
Here is how you can participate during the question and answer part of the presentation.

DURING THE PRESENTATION:



VIA WEB:

Turn video on / off.



To use these non-verbal options click on participants (bottom of screen); these options will pop up in side bar.

DURING THE Q&A:



JOINING VIA PHONE?

Use *9 to raise hand to ask for audio / video permission to ask questions or provide comments.



VIA WEB:

Chat to ask questions / comments or provide responses to poll questions



Raise hand to ask for audio / video permission to ask questions or provide comments.



THANK YOU!

Next Meeting TBD

www.boston.gov/departments/parks-and-recreation/improvements-paula-titus-park

For questions, maintenance requests or
concerns regarding any of our
parks contact 311

