

Office of Health Equity: Health Equity Advisory Committee

Margaret Reid, Director, Office of Health Equity, BPHC

Boston Board of Health Presentation

October 11, 2017



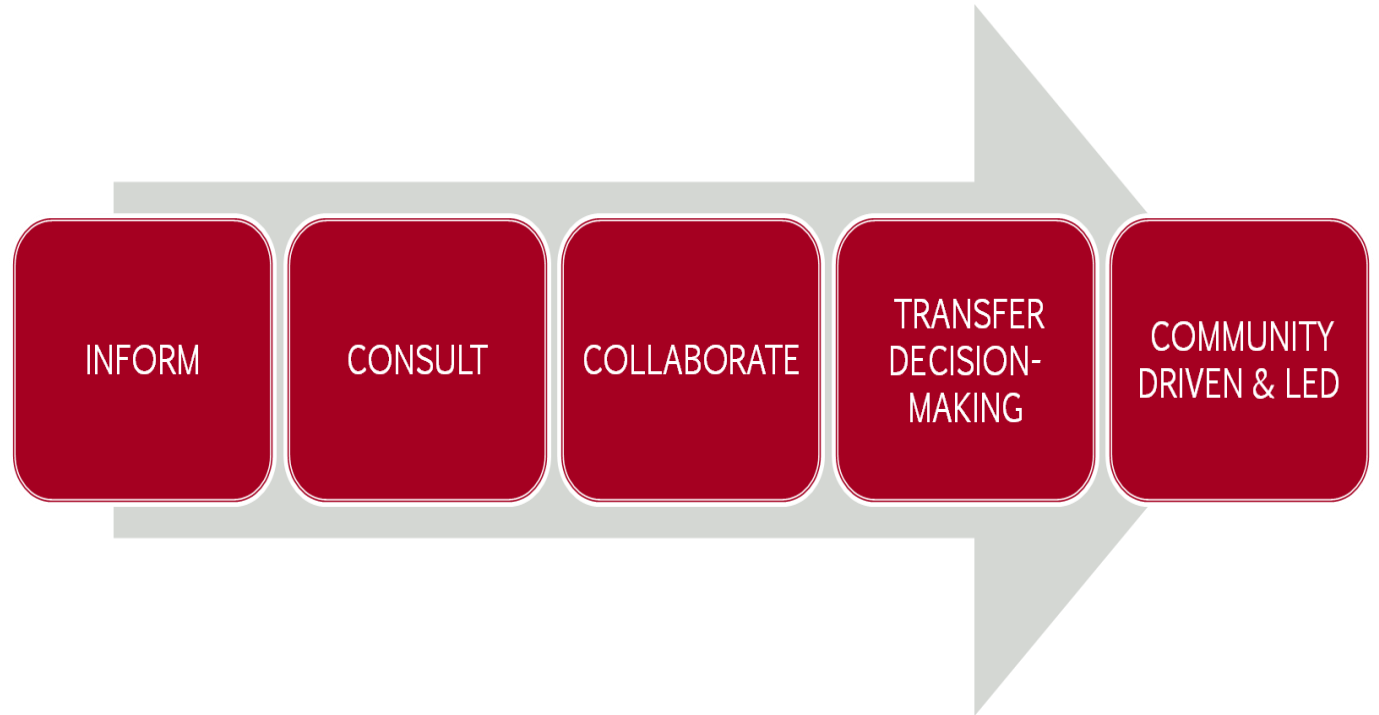
Three Strategic Priorities

Improve treatment and prevention of substance abuse

Strengthen the partnership between BPHC and the healthcare community to improve population health

Advance health equity

Community Engagement Plan



Health Equity Advisory Committee Members

10 residents representative of Boston's ethnically and culturally diverse populations, with various economic, educational, age, gender, and neighborhood experiences.

Role of Health Equity Advisory Committee:

Bring resident and community perspective to BPHC by advising on:

- the implementation and tracking of BPHC Strategic Plan
- the implementation and tracking of BPHC Community Engagement Plan
- how best to communicate data to support data-driven decision-making
- the development of new strategic and community engagement plans

Health Equity Advisory Committee Membership



Ms. Paulette Durrett



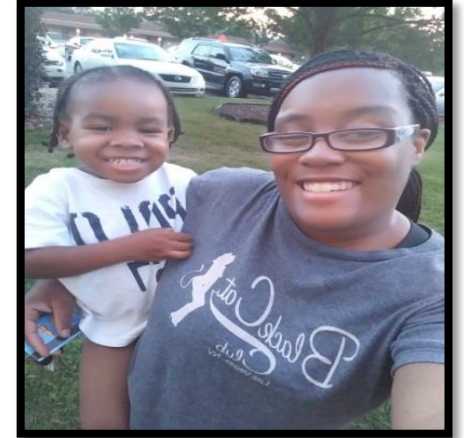
Mr. John Arthur Howard



Ms. Kendra Liburd



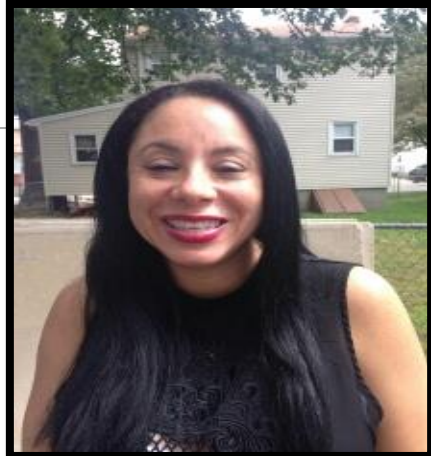
Mr. Damián Lima



Ms. Tiara Murphy



Ms. Kristen Risley



Ms. Edna G. Rivera-Carrasco



Ms. Angelica Sierra



Mr. Tim Wang



Ms. Athene Wilson-Glover