

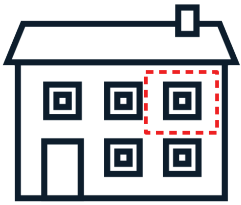


# ADDITIONAL DWELLING UNIT PROGRAM

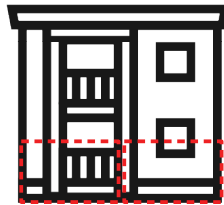
## What is the ADU Program?

The **ADU** Program makes it easier for homeowners to build a smaller independent unit within their home, which can provide additional space for caregivers, family members, or renters.

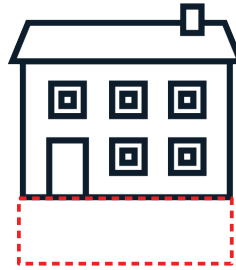
## EXAMPLES



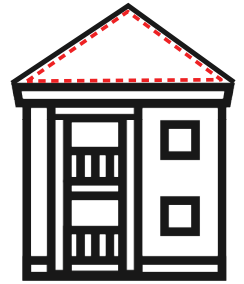
**Pre-existing unit -**  
convert extra independent unit into rental unit



**Carve out unit -**  
divide first floor into two studio units



**Basement conversion -**  
convert basement into an accessible unit



**Attic conversion -**  
convert attic into additional unit

## How do I know if I'm eligible?

If you are the owner of a one-, two- or three- family home in Boston, and you live on the property you are eligible for the ADU Program.

## How do I learn more or get started?

Visit [www.boston.gov/adu-toolkit](http://www.boston.gov/adu-toolkit) to learn more about program details, how to apply, funding opportunities, design ideas and more.



City of Boston  
Mayor Kim Janey



INSPECTIONAL  
SERVICES DEPARTMENT



boston planning &  
development agency



NEIGHBORHOOD  
DEVELOPMENT