

PAULA TITUS PARK



MEETING RECORDING



The Boston Parks and Recreation Department will be recording the meeting and posting to our project webpage for those who are unable to attend the Zoom meeting live.

It is possible that participants may also be recording the meeting with their phones cameras or other devices. If you do not wish to be recorded during this meeting, please keep your microphone and camera off.

VIRTUAL MEETING ETIQUETTE

We want to ensure this conversation is a pleasant experience for all and that all community members/ stakeholders are comfortable sharing their comments, questions and feedback.

Please be respectful and mindful of each other's time when asking questions/ providing comments, so that all attendees are able to participate in the meeting.

Keep questions/ comments project-specific and not personal to yield solution-driven discussion.

Please wait until all attendees have had the opportunity to ask a question/ provide a comment before providing additional questions/ comments.

You can always set up a conversation with **Nathan Frazee, Nathan.Frazee@boston.gov** to further discuss the project or process.

ZOOM TIPS

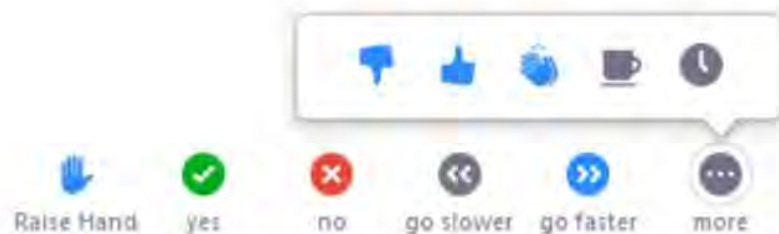
Here is how you can participate during the question and answer part of the presentation.

DURING THE PRESENTATION:



VIA WEB:

Turn video on / off.



To use these non-verbal options click on participants (bottom of screen); these options will pop up in side bar.

DURING THE Q&A:



JOINING VIA PHONE?

Use *9 to raise hand to ask for audio / video permission to ask questions or provide comments.



VIA WEB:

Chat to ask questions / comments or provide responses to poll questions



Raise hand to ask for audio / video permission to ask questions or provide comments.

PROJECT OVERVIEW

AGENDA

1

PROJECT TEAM INTRODUCTION

2

PROJECT OVERVIEW

3

PRESENTATION

4

LISTENING & DISCUSSION

5

CLOSING REMARKS & NEXT STEPS

PROJECT TEAM

NATHAN FRAZEE

PROJECT MANAGER

nathan.frazee@boston.gov or 617-961-3167

CHRISTINE BRANDAO

OUTREACH COORDINATOR, EXTERNAL AFFAIRS

christine.brandao@boston.gov or 617-961-3006

KAILA BACHMAN

Principal, CBA Landscape Architects LLC

JOCELYN WOLFF

Landscape Designer, CBA Landscape Architects LLC

FAISA SHARIF

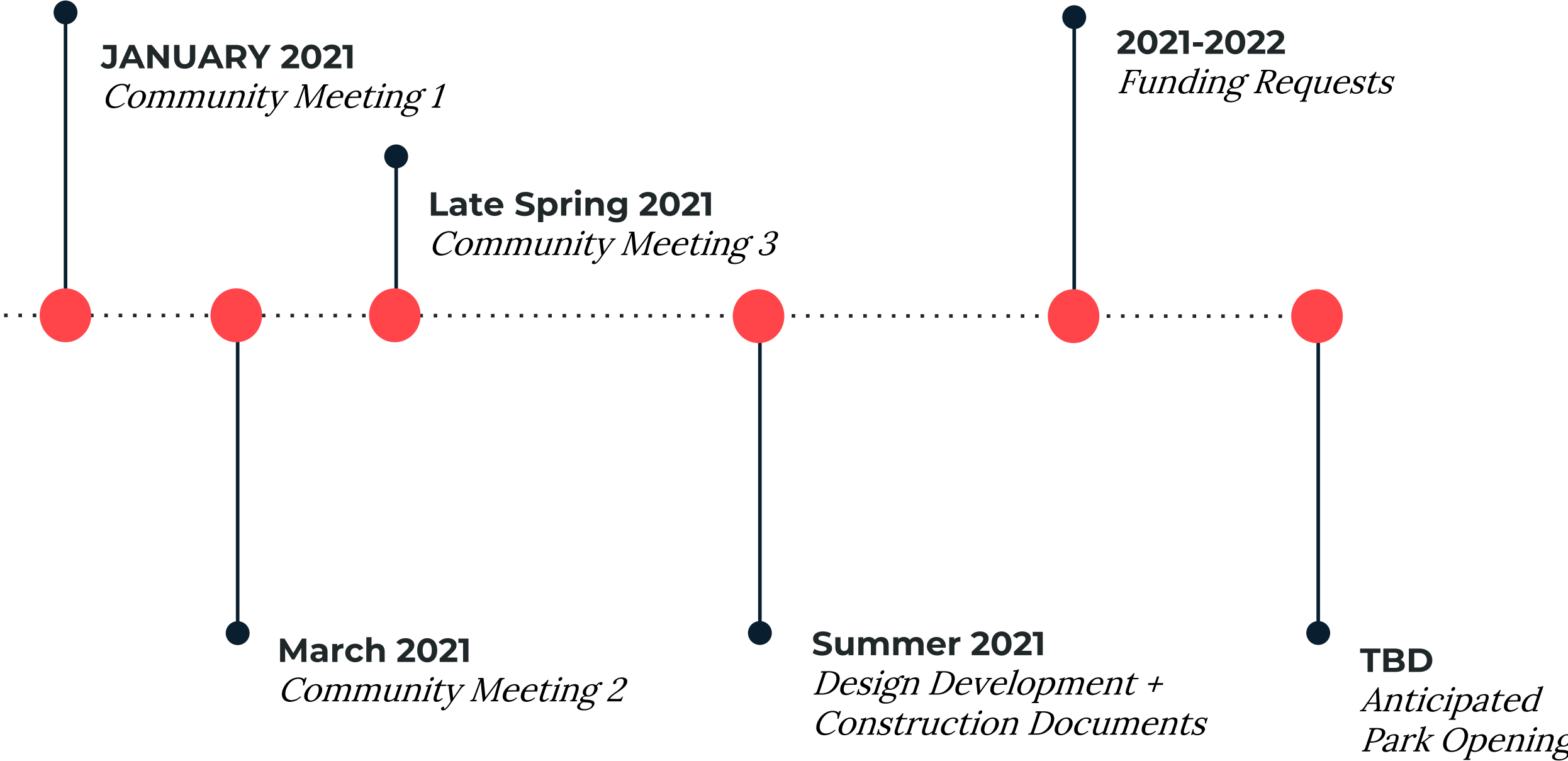
OFFICE OF NEIGHBORHOOD SERVICES

faisa.sharif@boston.gov



PROJECT SCHEDULE & FUNDING

CPA Funding Received to Date:
\$35,000





CITY OF BOSTON PRIORITIES

- **Expanding walkable access to parks**
- **Addressing equity**
- **Climate resilience**
- **Health**
- **Housing and community building**



PARK & RECREATION GOALS

- Accessible and available to all
- Diverse, balanced, and efficient mix of uses
- Meaningful and inclusive community engagement
- Adaptive and resilient landscapes
- Promote connections



CONTEXT

NEIGHBORHOOD CONTEXT

LEGEND

 PAULA TITUS PARK

PARKS

- 1. Highland Park
- 2. Margaret Wright Memorial Garden
- 3. St. Monica's Park
- 4. Marcella Playground
- 5. Southwest Corridor Park
- 6. Jackson Square Playground
- 7. Alvah Kittredge Park
- 8. McLaughlin Playgound
- 9. Lambert Avenue Playground
- 10. Cedar Square Park
- 11. Malcom X Park
- 12. Jeep Jones Park
- 13. Roxbury Heritage State Park
- 14. Gibbons Playground
- 15. Misson Hill Playground
- 16. Mozart Street Playground
- 17. Justice Edwards O. Gourdin Veterans Memorial Park
- 18. St. James Street Park
- 19. Kevin. W. Fitzgerald Park
- 20. Horatio Harris Park
- 21. Jefferson Playground
- 22. Forbes Street Playground
- 23. Madison Park

 SCHOOL

 COMMUNITY GARDEN

 PROPOSED ACD
Highland Park Architectural
Conservation District

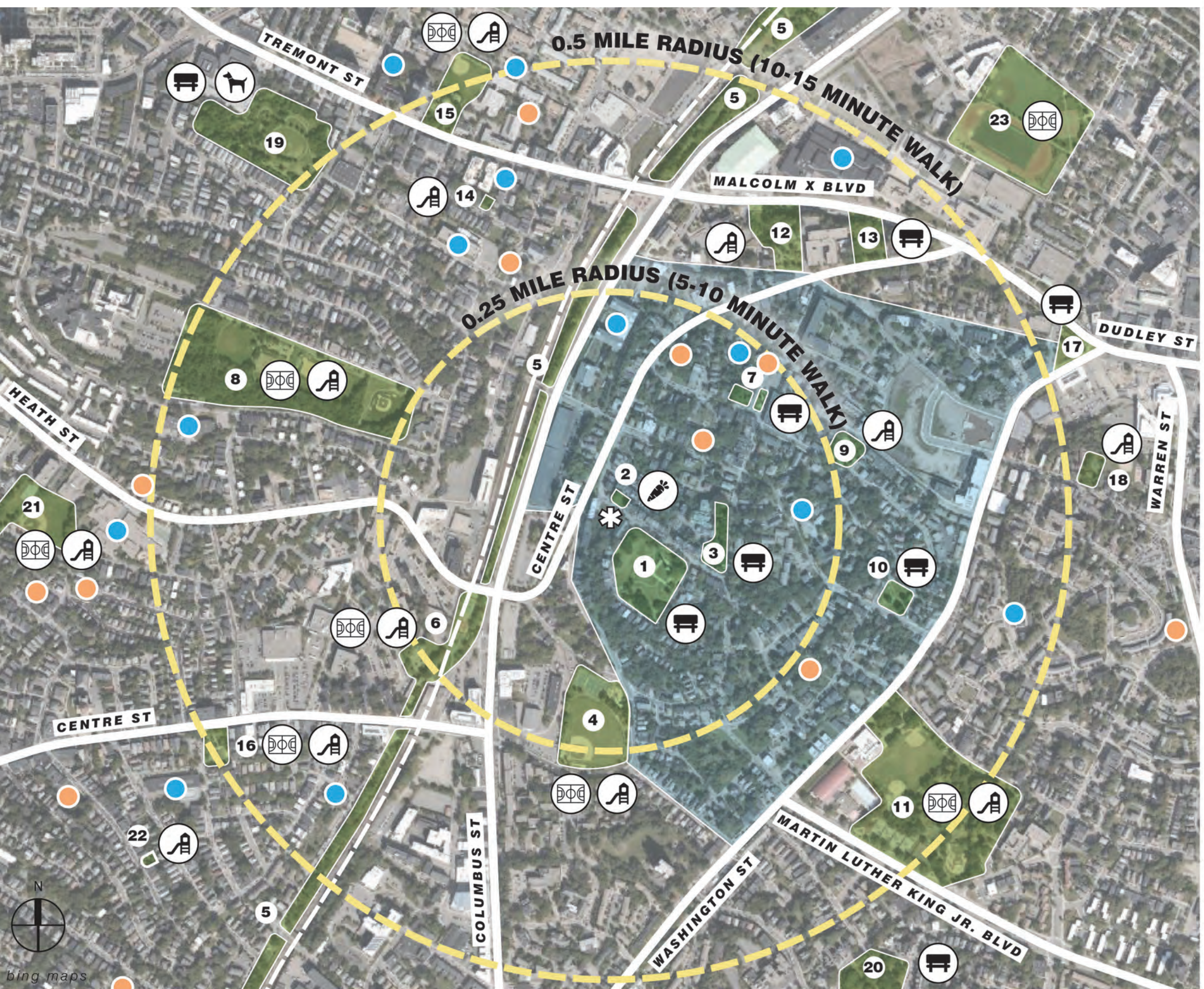
 PLAYGROUND

 PASSIVE PARK

 COMMUNITY GARDEN

 SPORTS FIELDS/COURTS

 DOG FACILITY



IMMEDIATE SURROUNDINGS



LEGEND

- PARKS
- RESIDENTIAL
- INSTITUTIONAL
- ▼ PUBLIC ENTRY
- ▼ PRIVATE ENTRY
- ↔ CIRCULATION

EDGE CONDITION

- DEAD-END
- - - FENCING

KEY SITES/BUILDINGS

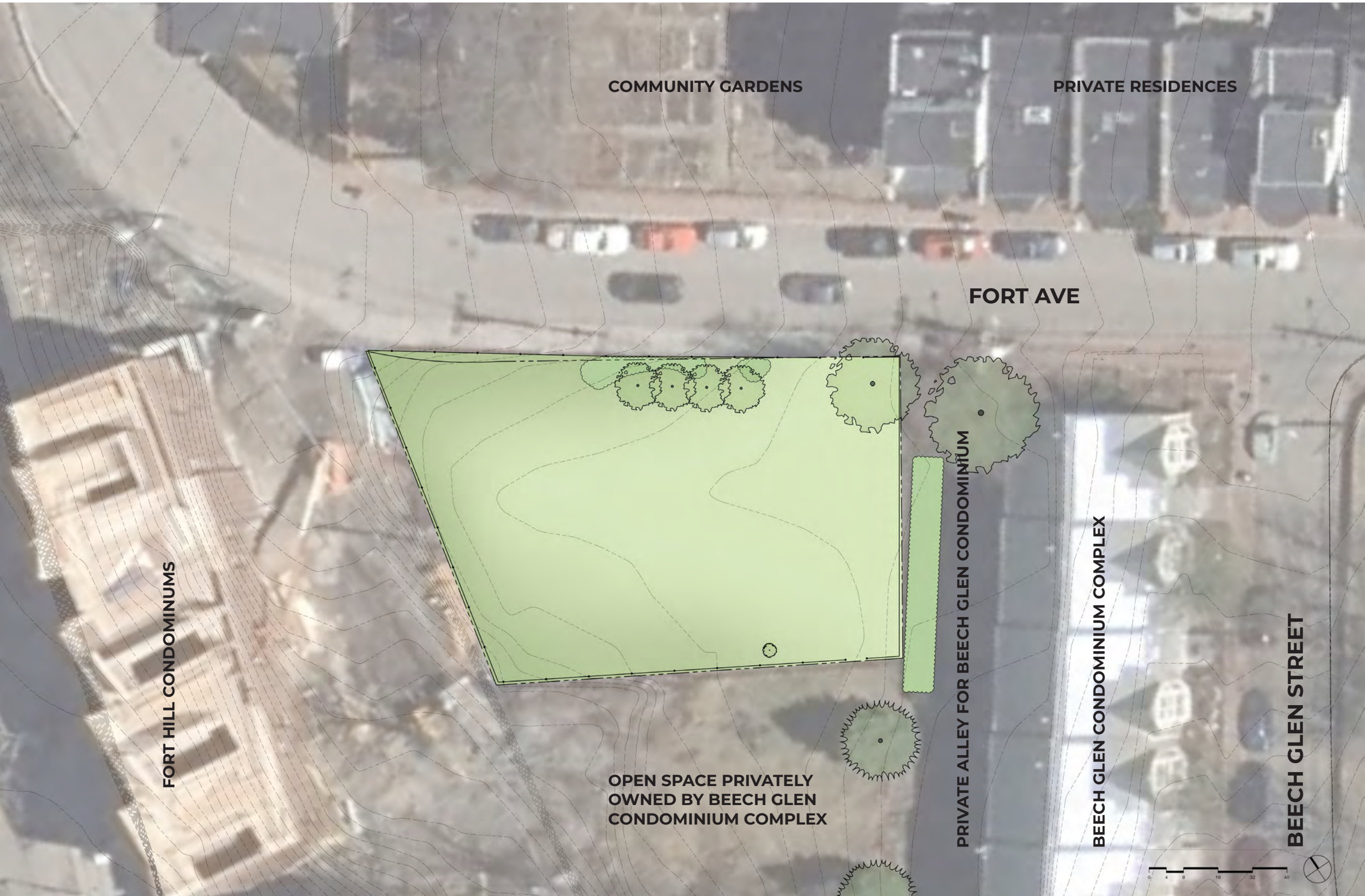
1. Fort Hill Tower and Highland Park
2. Margaret Wright Memorial Garden
3. St. Monica's Park
4. Emmanuel College Notre Dame Campus and the William Lloyd Garrison House Historic Landmark
5. Southwest Corridor
6. Jackson Square Park



bing maps

SITE ANALYSIS

EXISTING CONDITIONS



EXISTING CONDITIONS



BEECH GLEN
CONDOMINIUM COMPLEX

VIEW OF THE SOUTHEASTERN EDGE CONDITION



FORT HILL CONDOMINIUMS

VIEW OF THE WESTERN CORNER



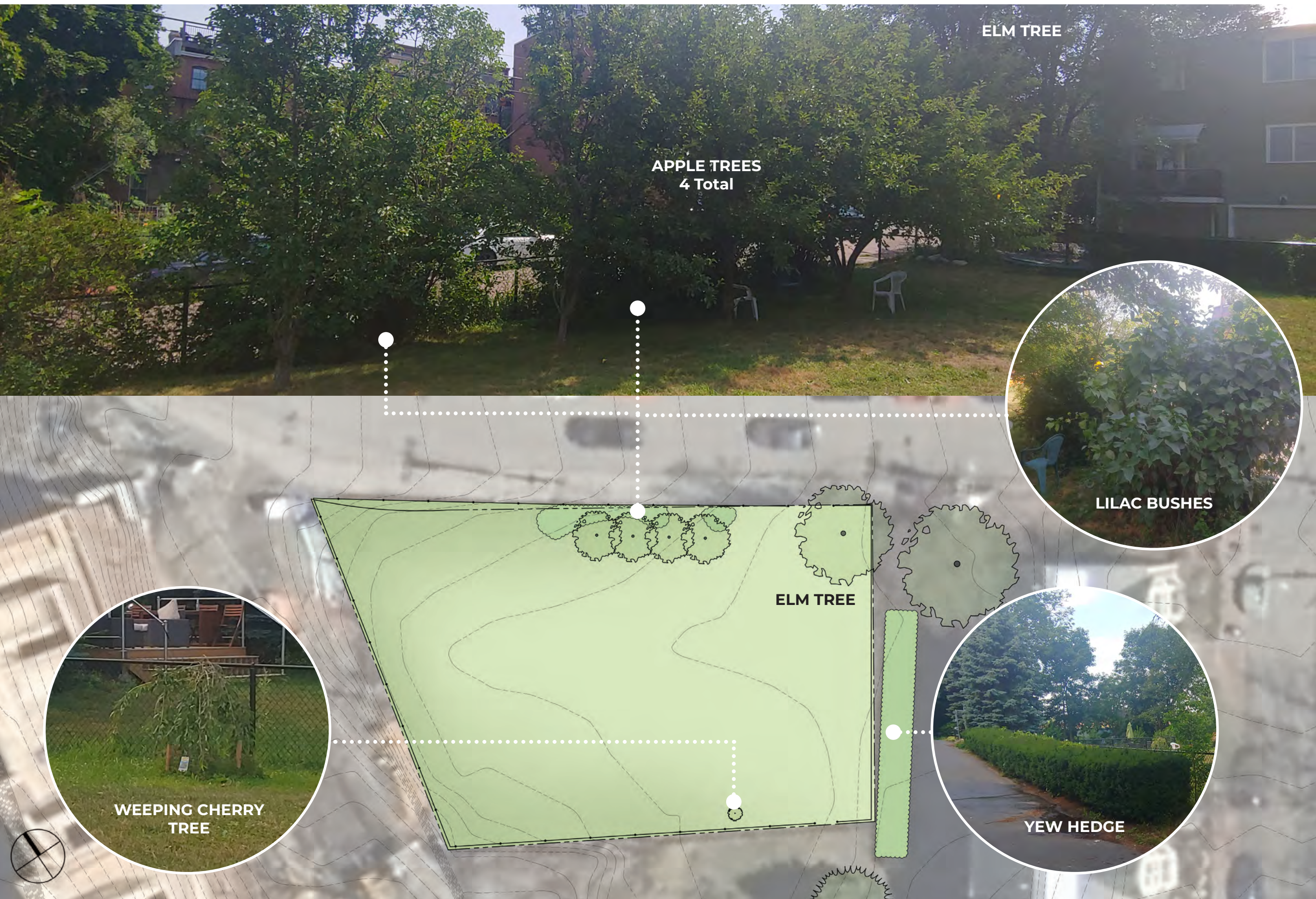
FORT HILL CONDOMINIUMS

VIEW OF THE NORTHWESTERN EDGE CONDITION



VIEW OF THE NORTHEASTERN EDGE CONDITION ALONG FORT AVENUE

EXISTING VEGETATION



FENCING AND ENTRANCES



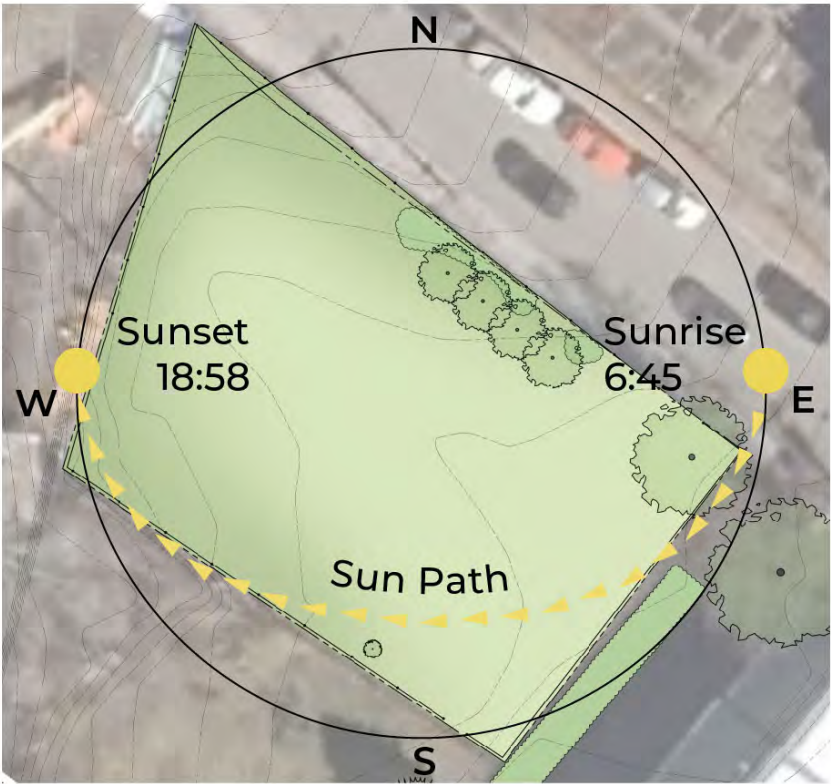
SLOPE ANALYSIS



SUN STUDY

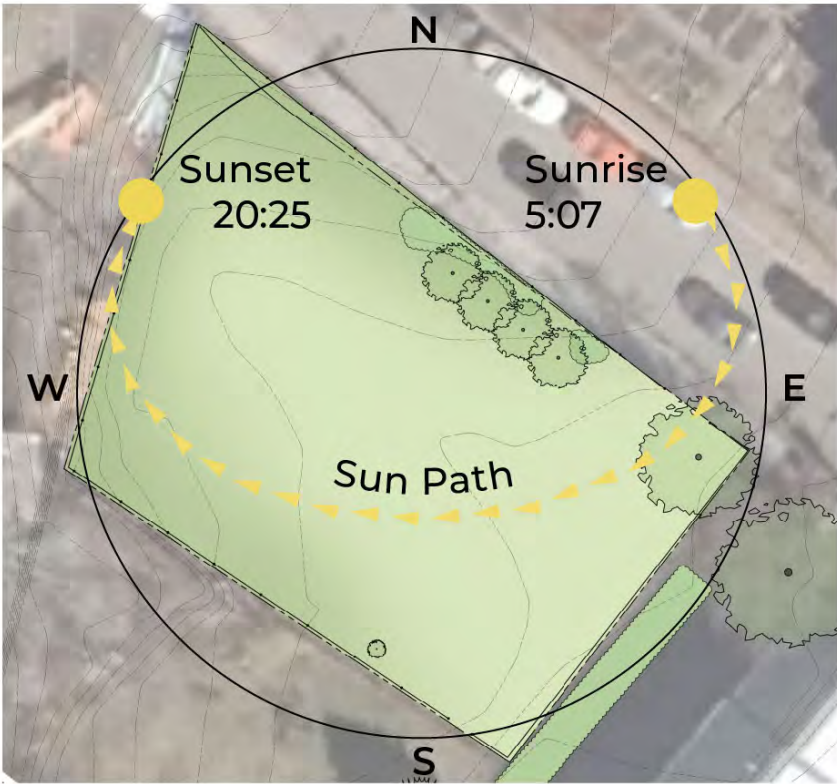
MARCH 21

0:00 2:00 4:00 6:00 8:00 10:00 12:00 14:00 16:00 18:00 20:00 22:00



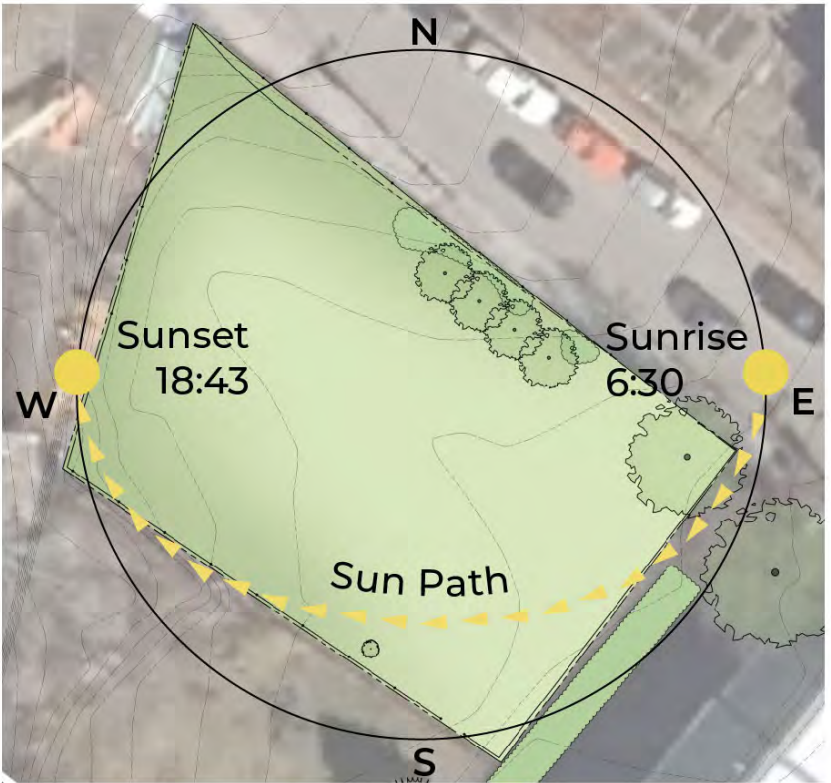
JUNE 21

0:00 2:00 4:00 6:00 8:00 10:00 12:00 14:00 16:00 18:00 20:00 22:00



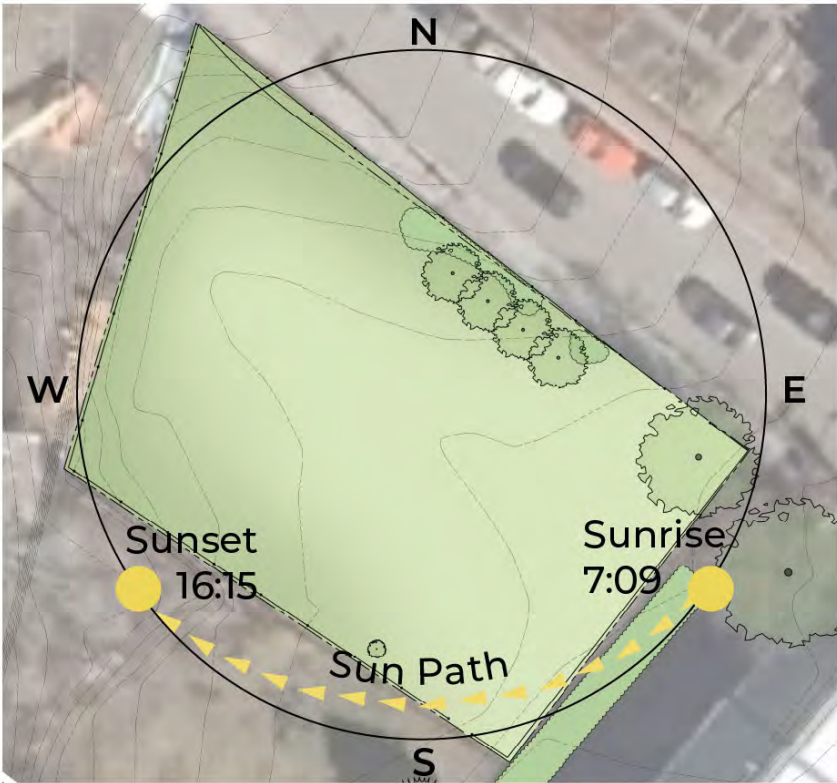
SEPTEMBER 21

0:00 2:00 4:00 6:00 8:00 10:00 12:00 14:00 16:00 18:00 20:00 22:00



DECEMBER 21

0:00 2:00 4:00 6:00 8:00 10:00 12:00 14:00 16:00 18:00 20:00 22:00



FIRST COMMUNITY MEETING SUMMARY

The first public meeting was held on January 19, 2021. Key feedback we received from attendees included:

- Flexible Open Space
- ‘Wow’ Factor
- Memorial Feature for Paula Titus
- Potential Future Art/Sculpture Location
- Play Equipment for Ages 2-5
- Nature Themed Play
- Comfortable and Inclusive Seating

SCHEMATIC PLANS

OPTION A



OPTION A PRECEDENT IMAGES



Benches along Pathway



Tree Shaded Path

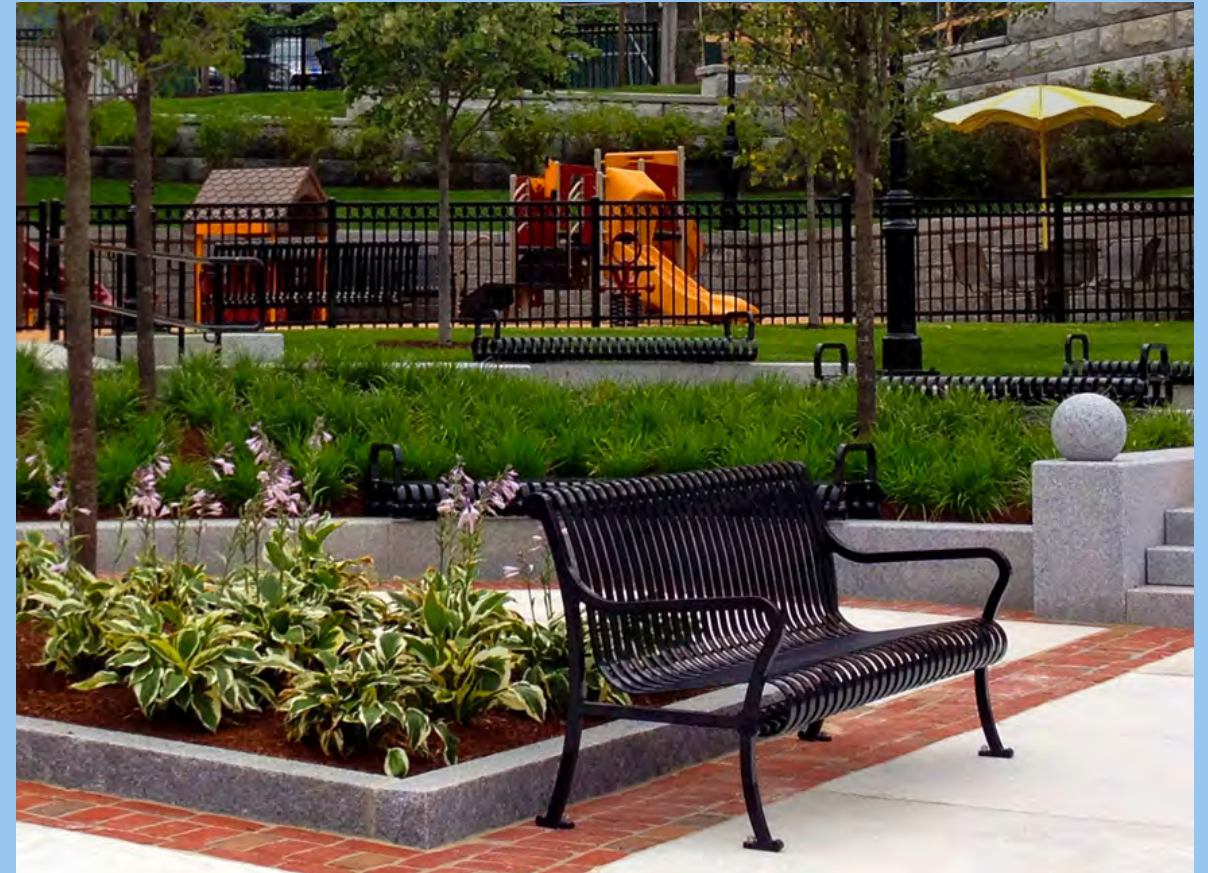


Open Lawn with Trees and Benches

OPTION A PRECEDENT IMAGES- FURNISHINGS



Pergola



Metal Ribbon Benches



Light Bollard



Game Table

OPTION A PRECEDENT IMAGES - PLAY EQUIPMENT



Play Structure

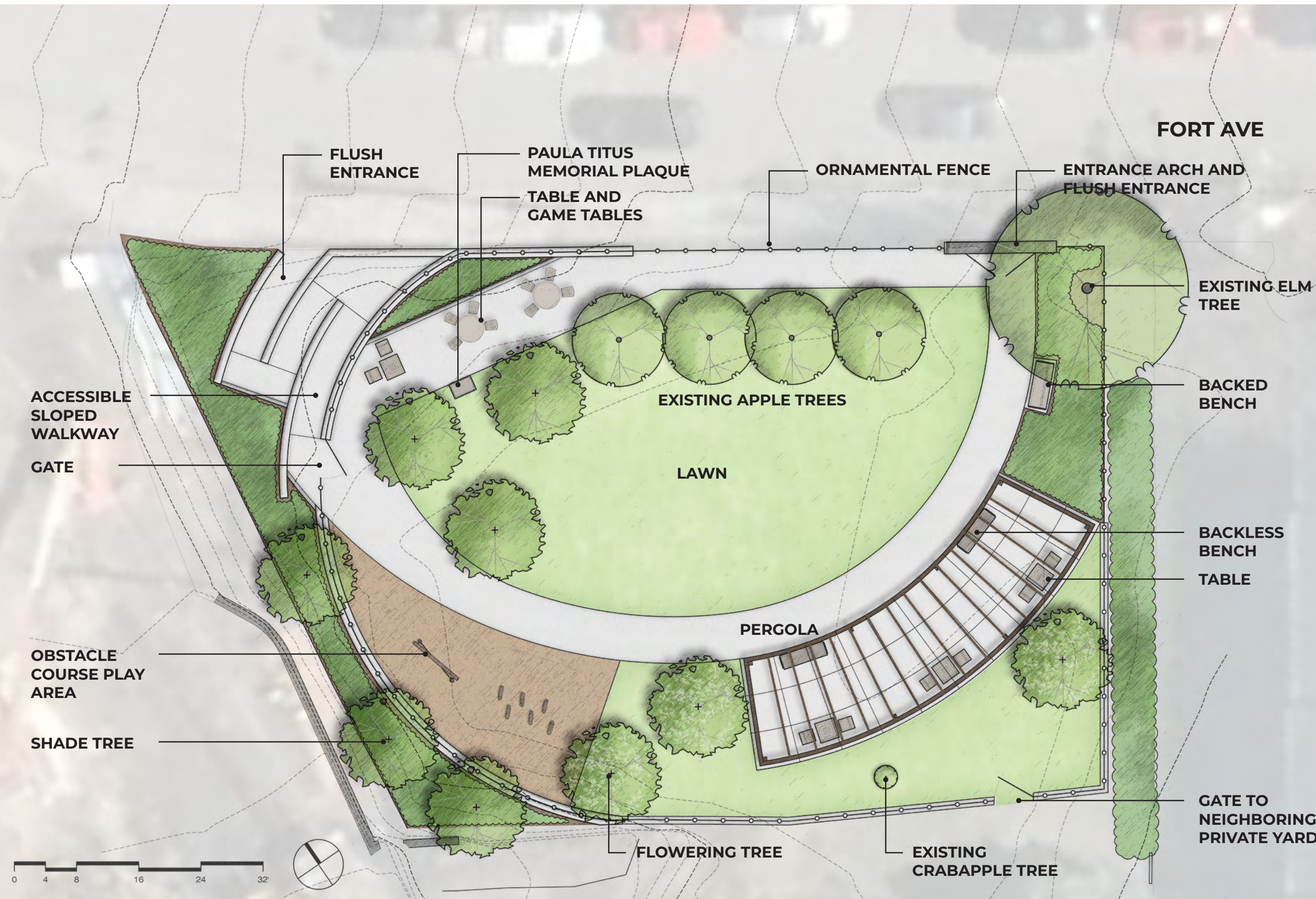


Interactive Play



Musical Instruments

OPTION B



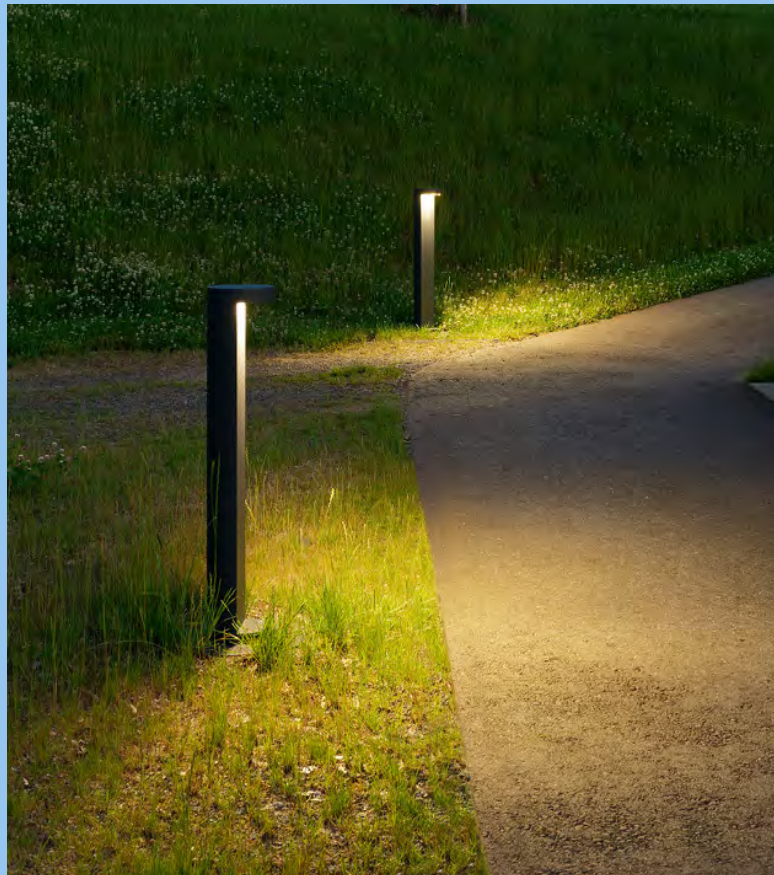
OPTION B PRECEDENT IMAGES - FURNISHINGS



Curved Pergolas



Central Lawn



Bollard



Bench



Table

OPTION B PRECEDENT IMAGES - PLAY EQUIPMENT



Balance Play



Obstacle Course Play



Play Features Along a Path



Balance Play

OPTION C



OPTION C PRECEDENT IMAGES - FURNISHINGS



Contemporary Pergola



Picnic Table



Granite Walls and Curbing



Bench



Light Bollard

OPTION C PRECEDENT IMAGES - PLAY EQUIPMENT



Multilevel Playing with Slides and Climbing Features



Multi-Child Springer



Single Springer



Climbing Feature

**PRECEDENT IMAGES
FOR ALL OPTIONS**

SITE ELEMENTS: ENTRANCE FEATURES



Metal Arch



Entrance Columns



Metal Fence with Decorative Cutouts

SITE ELEMENTS: PAVING



Colored Concrete



Concrete with Brick Banding



Square Concrete Pavers



Permeable Pavers in Herringbone Pattern



Linear Concrete Pavers

A group of people are seated in a circle in a room with large windows and a whiteboard. They appear to be engaged in a discussion or meeting. The image is overlaid with a semi-transparent blue filter.

LISTENING & DISCUSSION

Help us build great parks.
Let us know what matters to you.

ZOOM TIPS

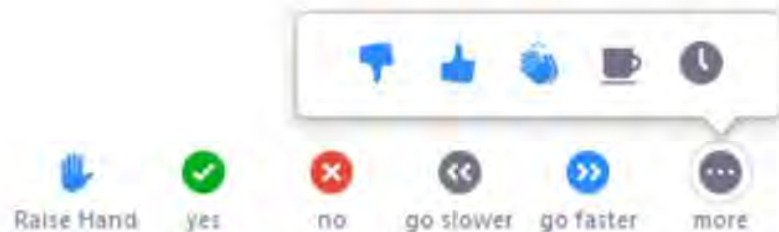
Here is how you can participate during the question and answer part of the presentation.

DURING THE PRESENTATION:



VIA WEB:

Turn video on / off.



To use these non-verbal options click on participants (bottom of screen); these options will pop up in side bar.

DURING THE Q&A:



JOINING VIA PHONE?

Use *9 to raise hand to ask for audio / video permission to ask questions or provide comments.



VIA WEB:

Chat to ask questions / comments or provide responses to poll questions



Raise hand to ask for audio / video permission to ask questions or provide comments.

SCHEMATIC PLANS



Option A



Option B



Option C



THANK YOU!

Next Meeting TBD

www.boston.gov/departments/parks-and-recreation/improvements-paula-titus-park

For questions, maintenance requests or
concerns regarding any of our
parks contact 311

