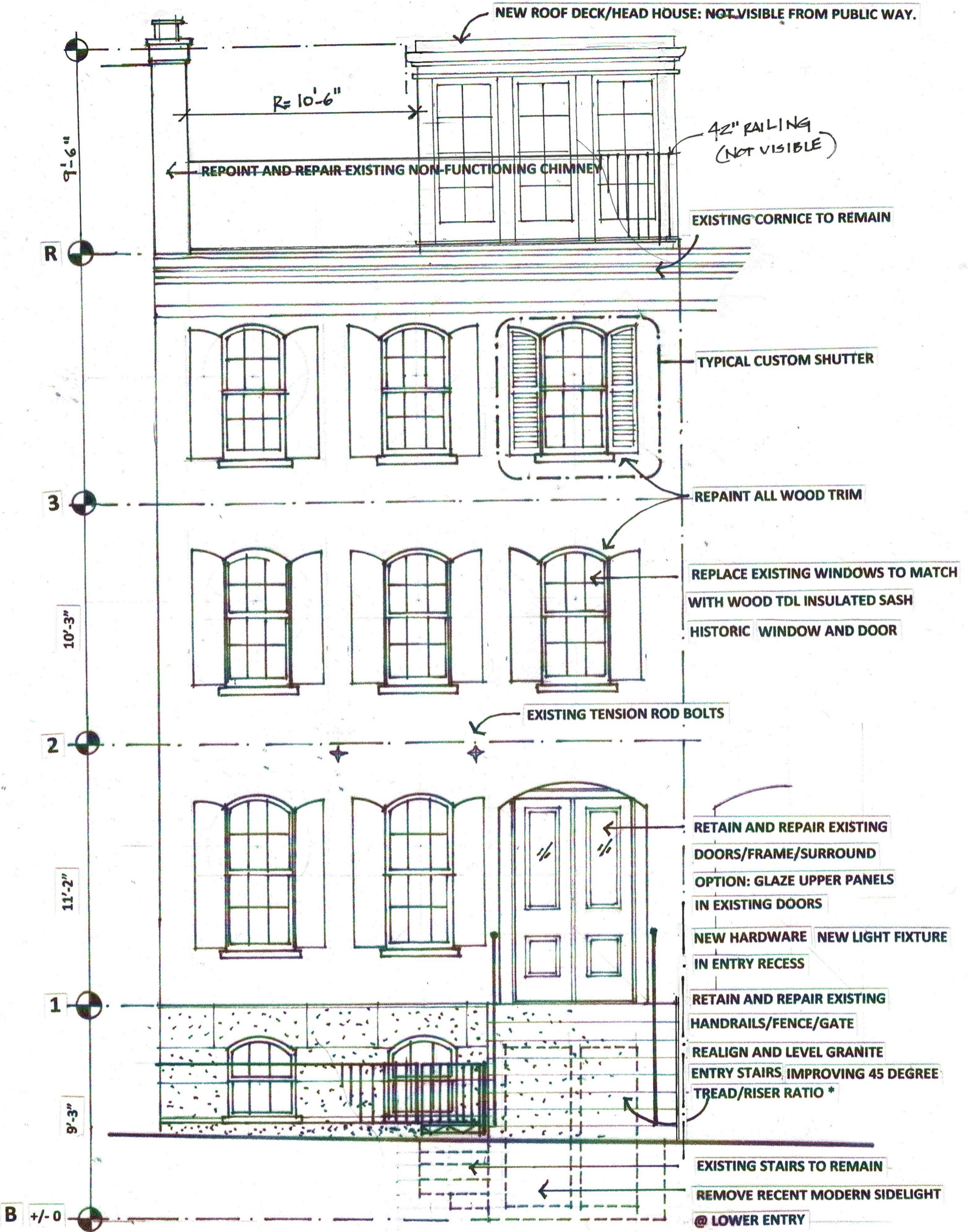




102

104

Chestnut Elevation



\* PROBLEMATIC DUE TO DOUBLE STAIR SERVING BOTH 102 AND 104

**Frank McGuire Architects**

Architecture . Planning . Programming

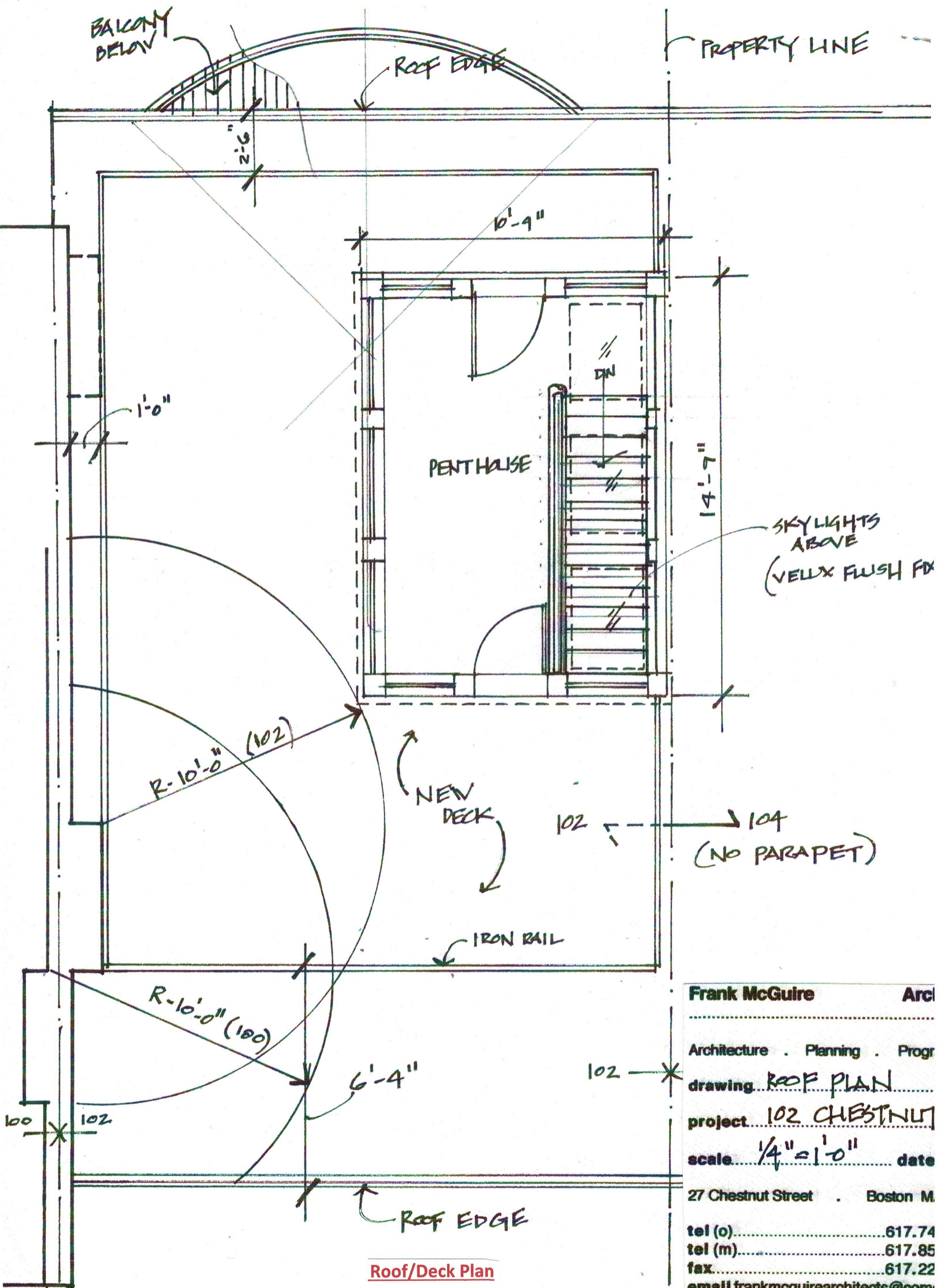
drawing **CHESTNUT ST. ELEVATION**

project **102 CHESTNUT**

scale  $\frac{1}{4}'' = 1'-0''$  date **3/25/21**

27 Chestnut Street . Boston MA 02108

tel.(o).....617.742.4249  
tel (m).....617.851.8090  
fax.....617.227.1761  
email [frankmcguirearchitects@comcast.net](mailto:frankmcguirearchitects@comcast.net)



Roof/Deck Plan

Chestnut

**Frank McGuire**      **Arch**  
 .....  
 Architecture . Planning . Progr  
 drawing ROOF PLAN  
 project 102 CHESTNUT  
 scale 1/4" = 1'-0"      date  
 27 Chestnut Street      Boston M  
 tel (o) ..... 617.74  
 tel (m) ..... 617.85  
 fax ..... 617.22  
 email frankmcguirearchitects@com

Penthouse

Physical mockup will be in place for viewing

railing

9'6"

← 5' →

← 17' to edge →

↑ 52°  
↓



aerial view 102

Legend

📍 102 Chestnut St

NOT VISIBLE → 102

102 Chestnut St

NOT VISIBLE

Aerial View

View Points (Not Visible)

Google Earth

Image Landsat / Copernicus  
Data SIO, NOAA, U.S. Navy, NGA, GEBCO

100 ft



sconce

sconce

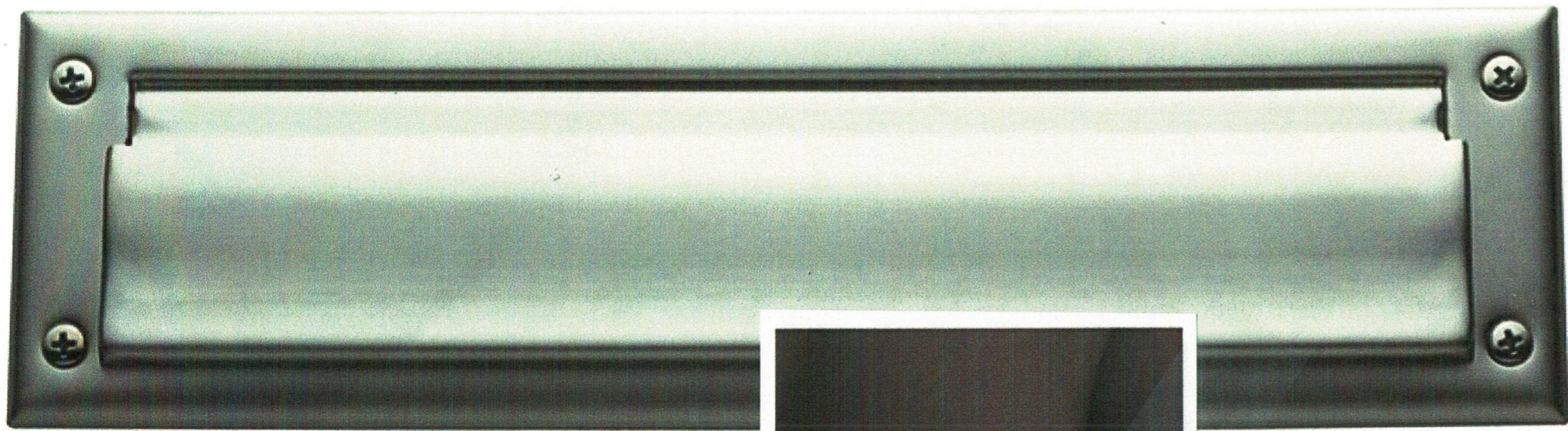
Annunciator Keypad

Glaze recessed panels

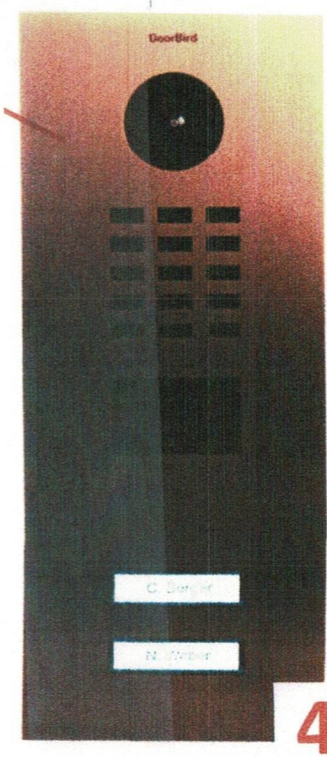
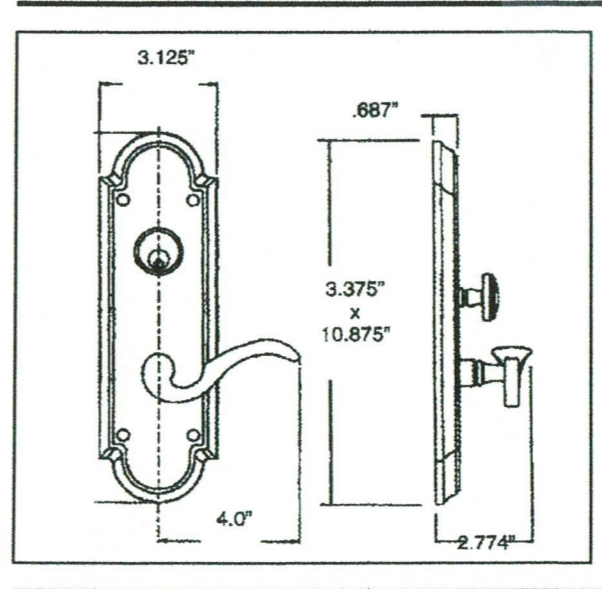
102

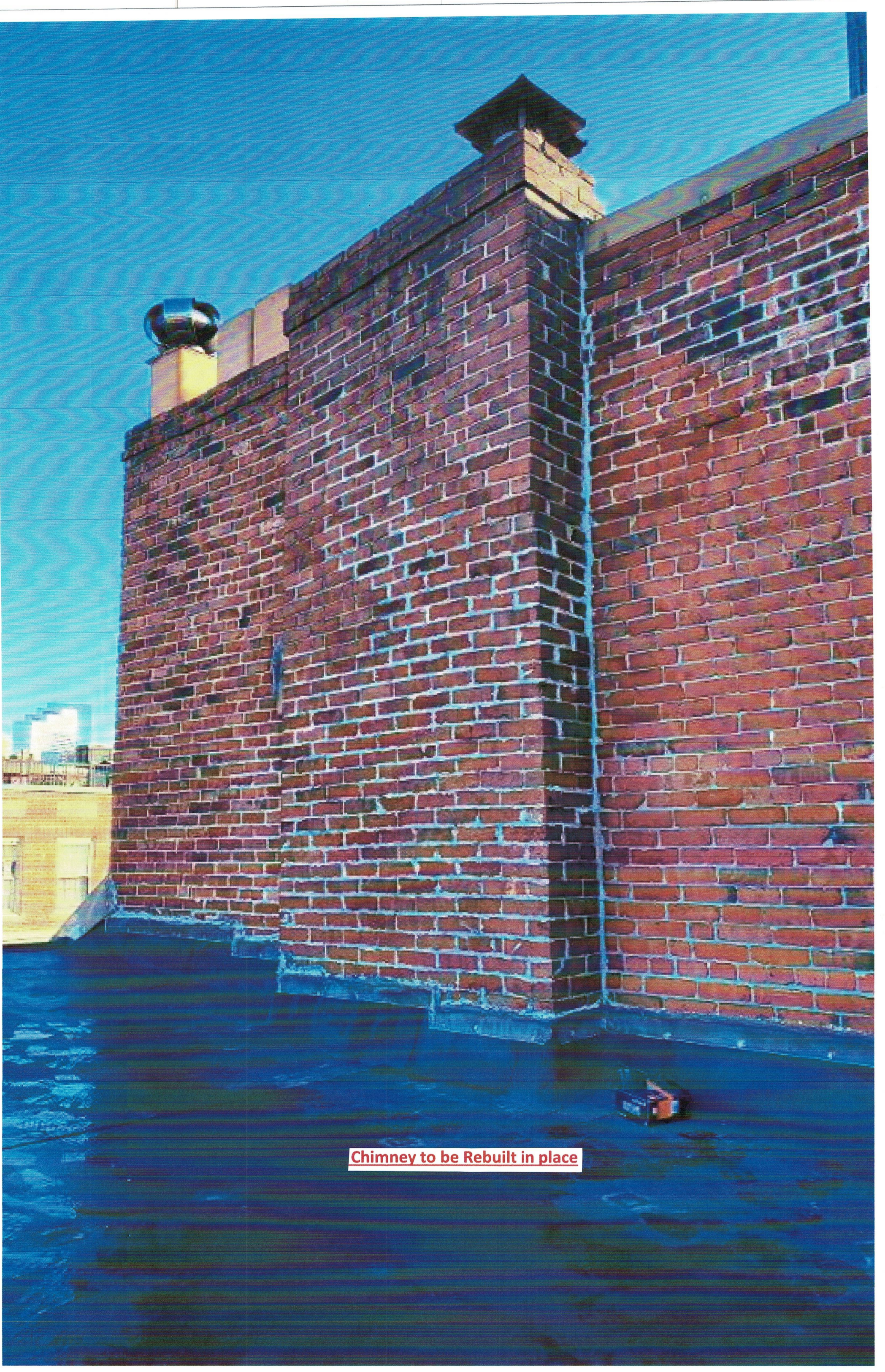
Entry





**6951 - STAFFORD  
ESTATE ENTRYSET**





**Chimney to be Rebuilt in place**





Re-align Stairs ( Note continuity with 104)