

Franklin Park Zoo

Landmarks Design Development



**KALAHARI
KINGDOM**

**SERENGETI
CROSSING**

**WATTLED
CRANE**

**REMNANT
GREETING**

**ZOO
ENTRY**

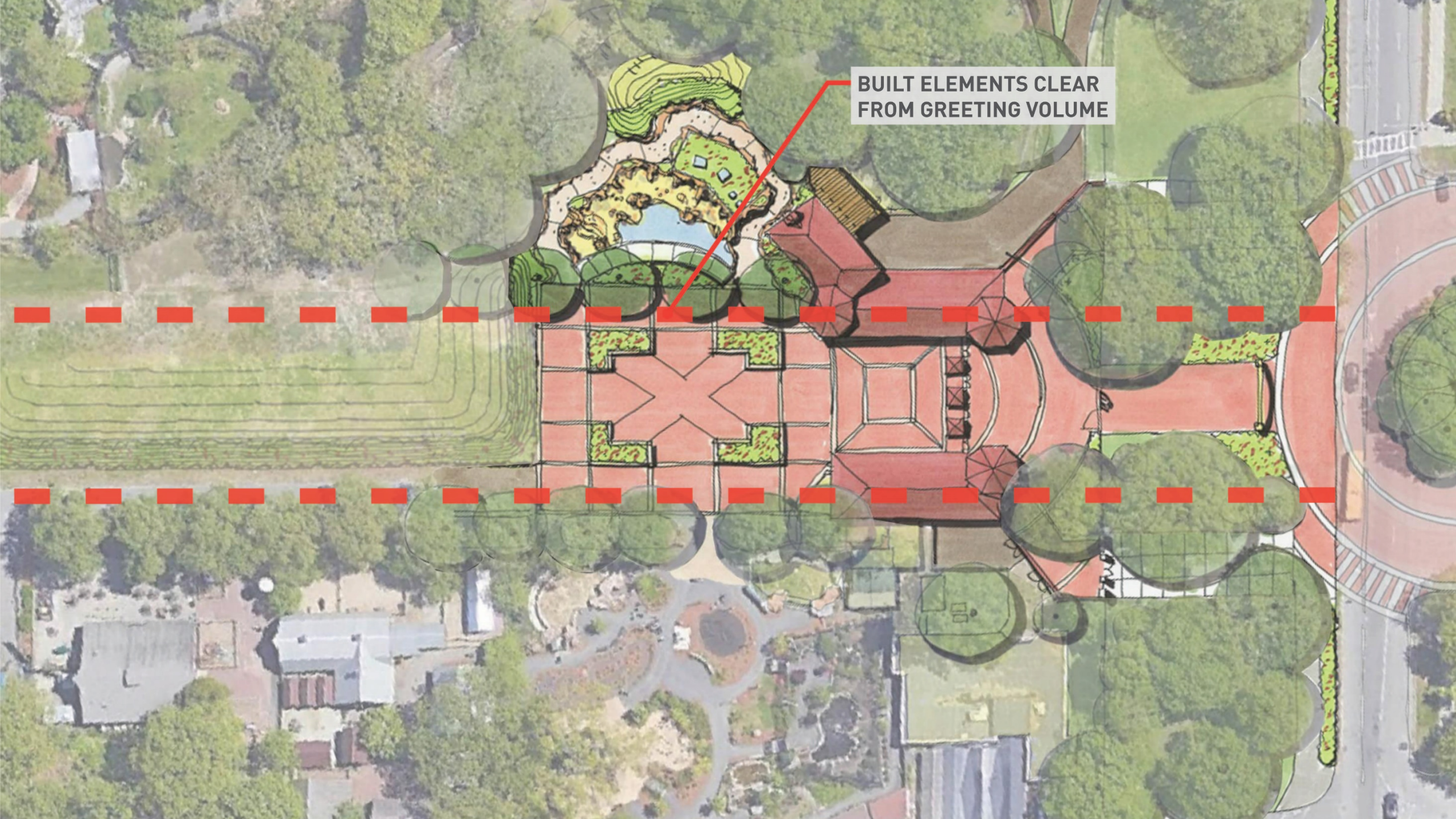
**GIDDY-UP
GRILL**

**NATURE'S
NEIGHBORHOODS**

ZOO ADMIN



**BUILT ELEMENTS CLEAR
FROM GREETING VOLUME**



Peabody Circle & Refectory Hill Today: An Unwelcoming Arrival



“Franklin Park can be improved with better and more accessible entrances that welcome people (including those riding bikes) rather than narrowing paths and putting up bollards and barriers.”

“My favorite memories are of visiting the zoo with my young nieces and nephews every summer. It was a big event that we looked forward to every year.”

NARROW SIDEWALK AFFECTS PEDESTRIAN SAFETY ALONG BLUE HILL AVE

SPACE IS DOMINATED BY TRAFFIC, PARKING, AND IDLING BUSES

UNCEREMONIAL MAIN ENTRANCE TO THE PARK; ZOO ENTRANCE IS DIFFICULT TO IDENTIFY

PERIMETER WALL LIMITS ACCESS

THIS AREA IS DIVIDED BY ROADS AND PARKING, LEAVING A LOT OF UNUSABLE SPACE

“I would love to see improved paths and connections to the community, with public art displays, for example.”

Peabody Circle & Refectory Hill The Community's Front Porch



THE FRONT PORCH
A GENEROUS & WELCOMING
ENTRANCE THAT ENGAGES STREET
LIFE & THE ADJACENT NEIGHBORHOOD

OUTDOOR CLASSROOM
TERRACE SEATING UNDER CANOPY
FOR EDUCATION AND GATHERING
OF GROUPS OF ALL SIZES

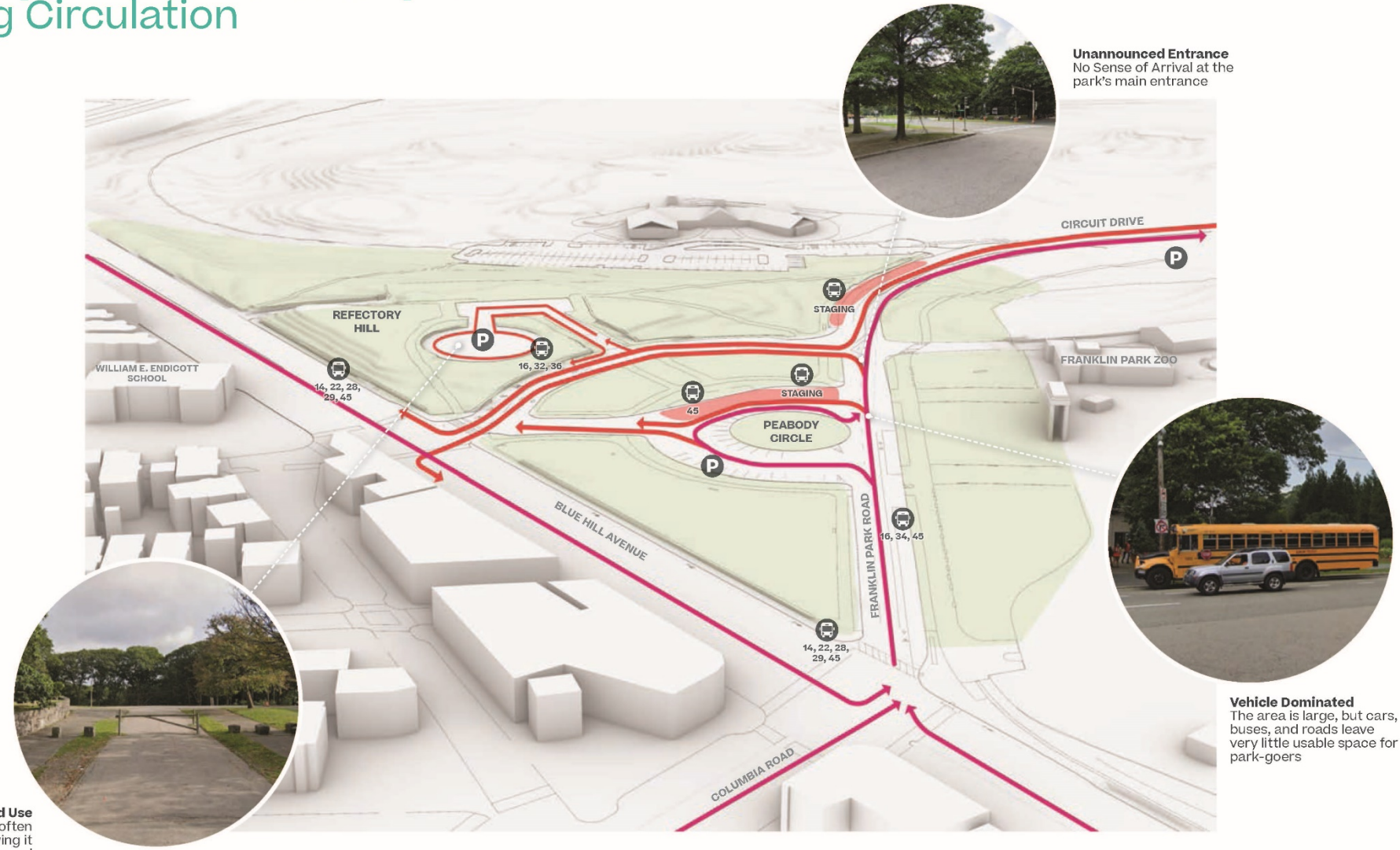
EVERYDAY GATHERING
CREATE COMFORTABLE PLACES
IN THE SHADE TO PEOPLE WATCH,
PLAY GAMES, & MEET FRIENDS

PEABODY CIRCLE
FLEXIBLE PLAZA FOR COMMUNITY
EVENTS, MARKETS, AND
CELEBRATIONS
WINTER FEST MARKET

CELEBRATE THE ZOO
CONNECT THE ZOO'S MAIN ENTRANCE
TO THE PARK & ALLOW FOR
SHARED USE OF PARK SPACE FOR
PROGRAMMING

ANNOUNCE YOURSELF!
GIVE IDENTITY TO THE PARK'S MAIN
ENTRANCE WITH A RECOGNIZABLE AND
INTERACTIVE MARKER

Peabody Circle & Refectory Hill Existing Circulation



Unannounced Entrance
No Sense of Arrival at the park's main entrance

Vehicle Dominated
The area is large, but cars, buses, and roads leave very little usable space for park-goers

Limited Use
Refectory Hill is often locked & gated, leaving it mostly unused

Key
— Eastbound traffic
— Westbound traffic



City of Boston
Mayor Martin J. Walsh



Peabody Circle & Refectory Hill Places for Year-Round Learning and Celebration



Proposal
Parking in Shade



Historic Use
Civic Use & Learning

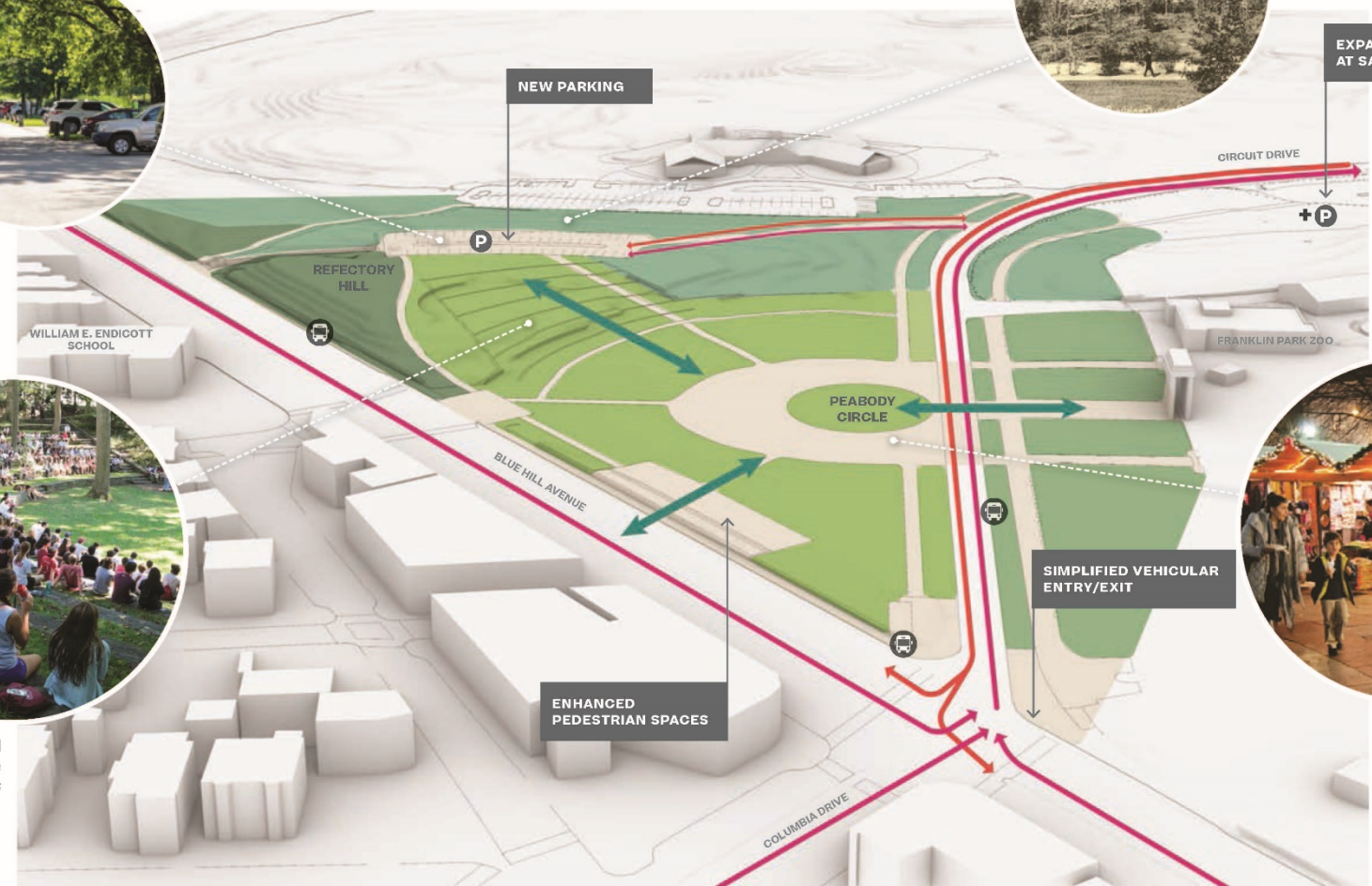
EXPANDED PARKING AT SAUSAGE LOT

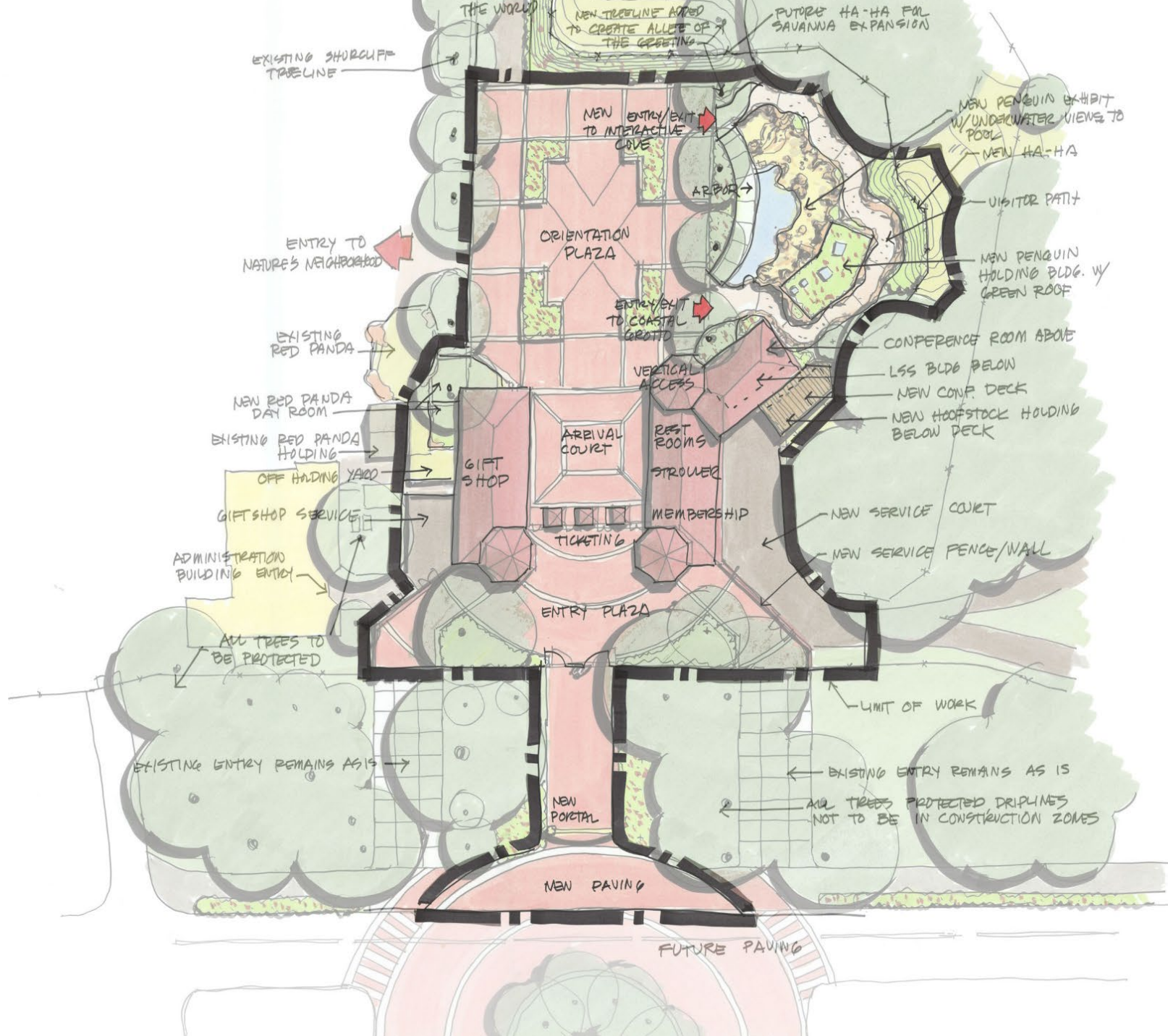


Proposal
Outdoor amphitheatre for education & events



Proposal
A flexible space for markets, parades, and celebrations





Previous Presentation | MASSING STUDY

OPTION 1: BOOK ENDS W/ PORTAL

ALTERNATE VIEWS



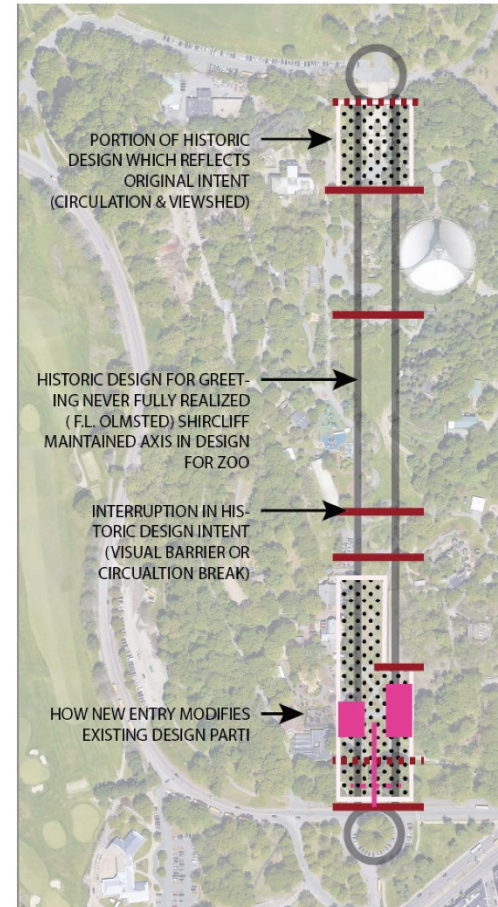
PROS:

- PORTAL BRINGS ATTENTION TO THE STREET
- MAINTAINS SHURCLIFF "PROSPECT"
- HISTORIC MASSING OF BUILDINGS BASED ON 1914 SHURCLIFF PLAN

CONS:

- REDUNDANT PORTALING
- STILL NEED TO ATTRACT PEOPLE TO CENTER GREETING FROM "APPROACH"

DIAGRAM OF THE GREETING



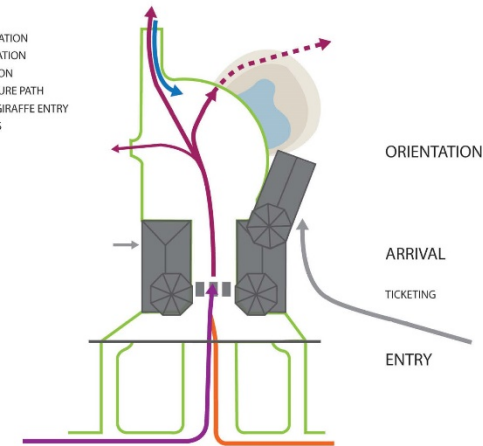
MASSING STUDY FROM FRONT



DIAGRAM

LEGEND

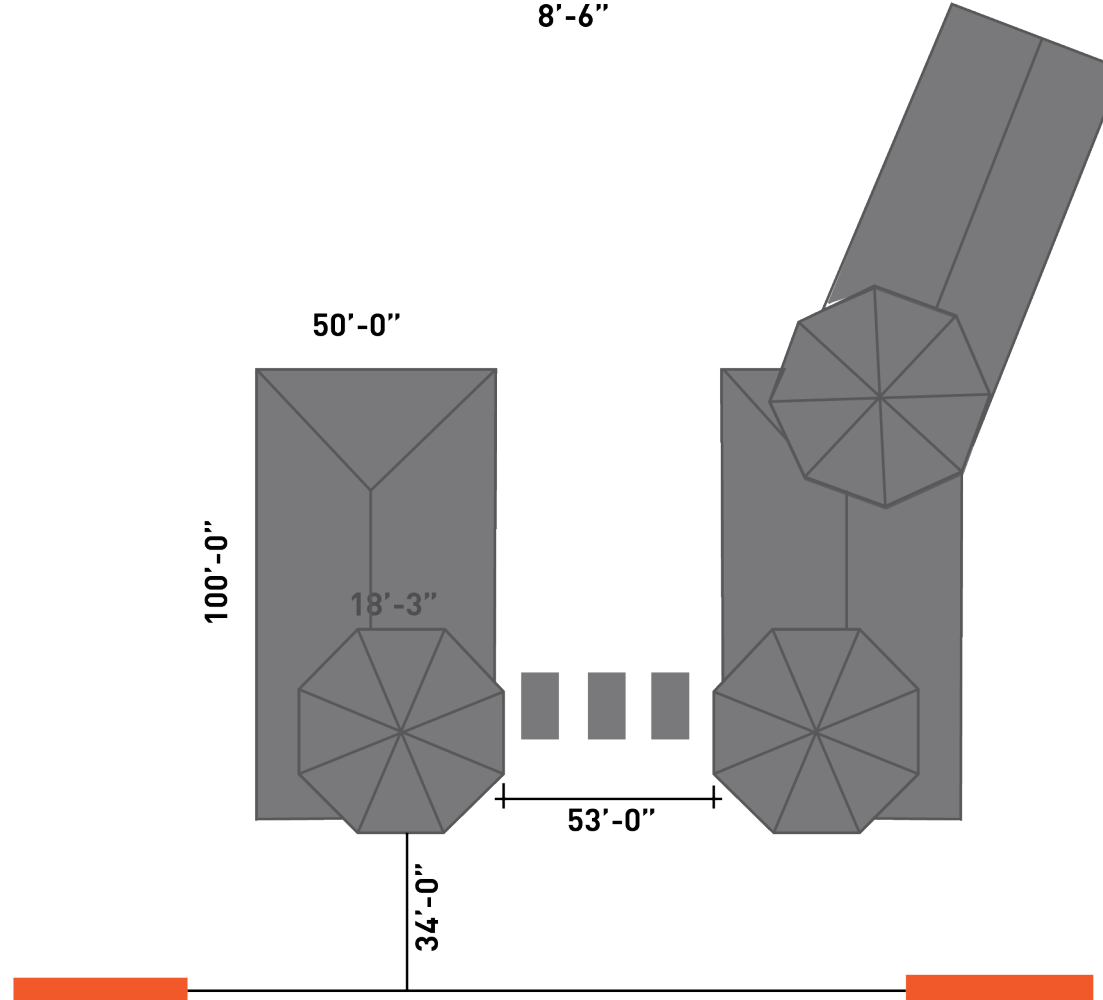
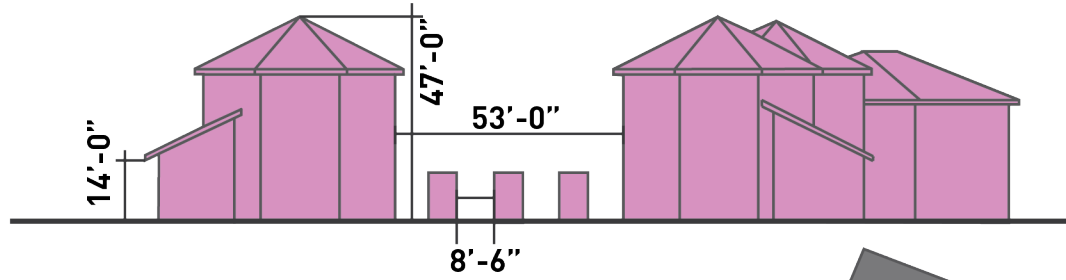
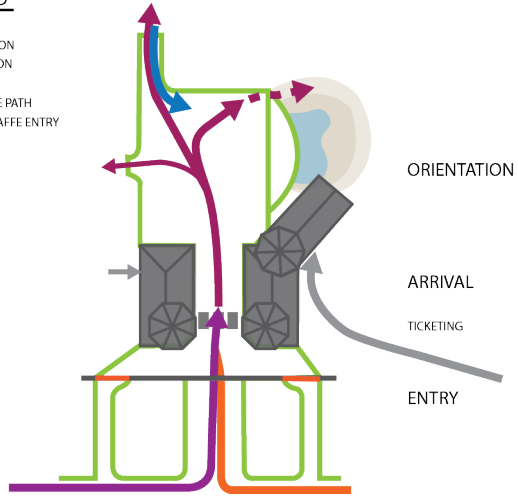
- PAVING
- VISITOR CIRCULATION
- GROUP CIRCULATION
- ZOO CIRCULATION
- PROPOSED FUTURE PATH
- GUESTS FROM GIRAFFE ENTRY
- SERVICE ACCESS



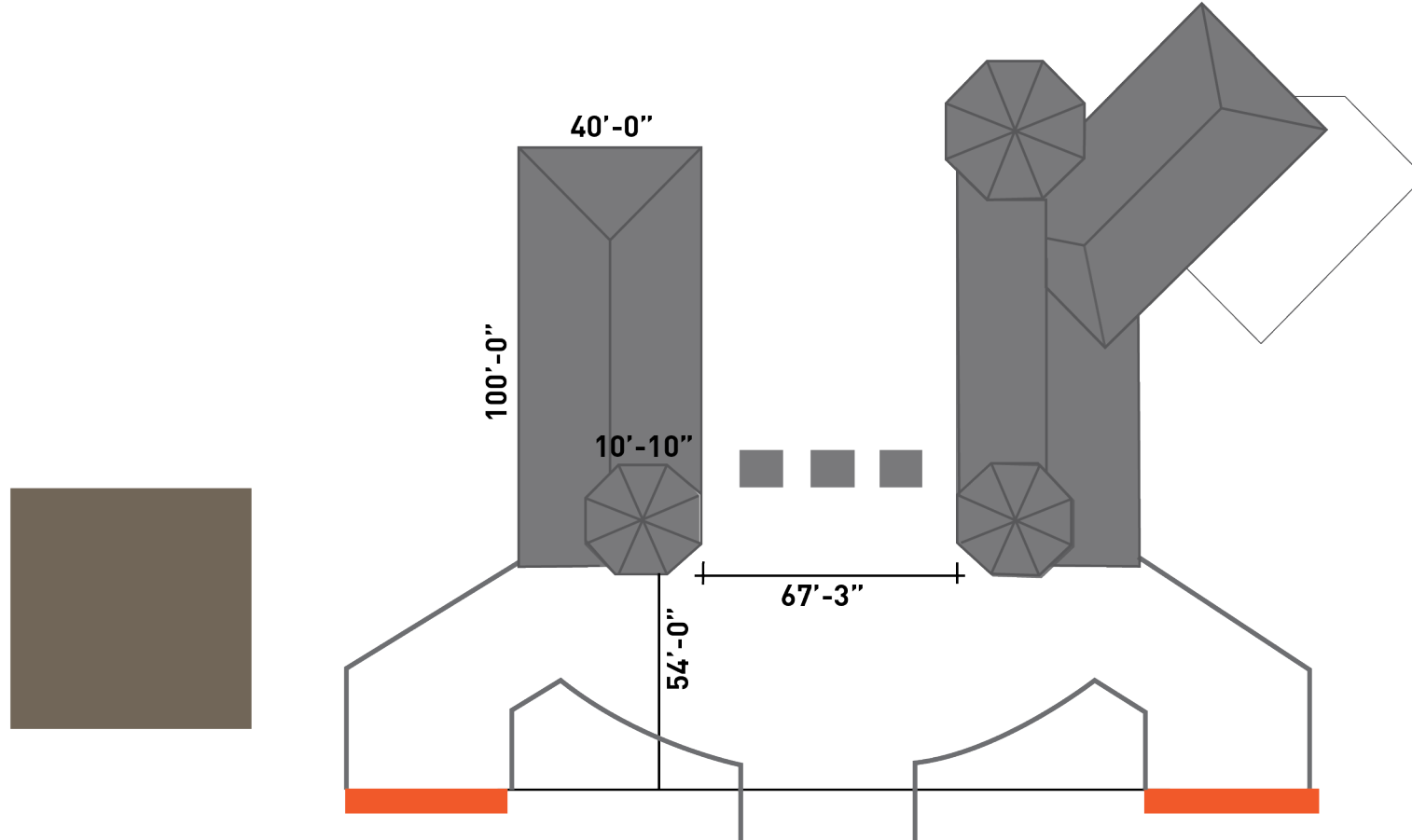
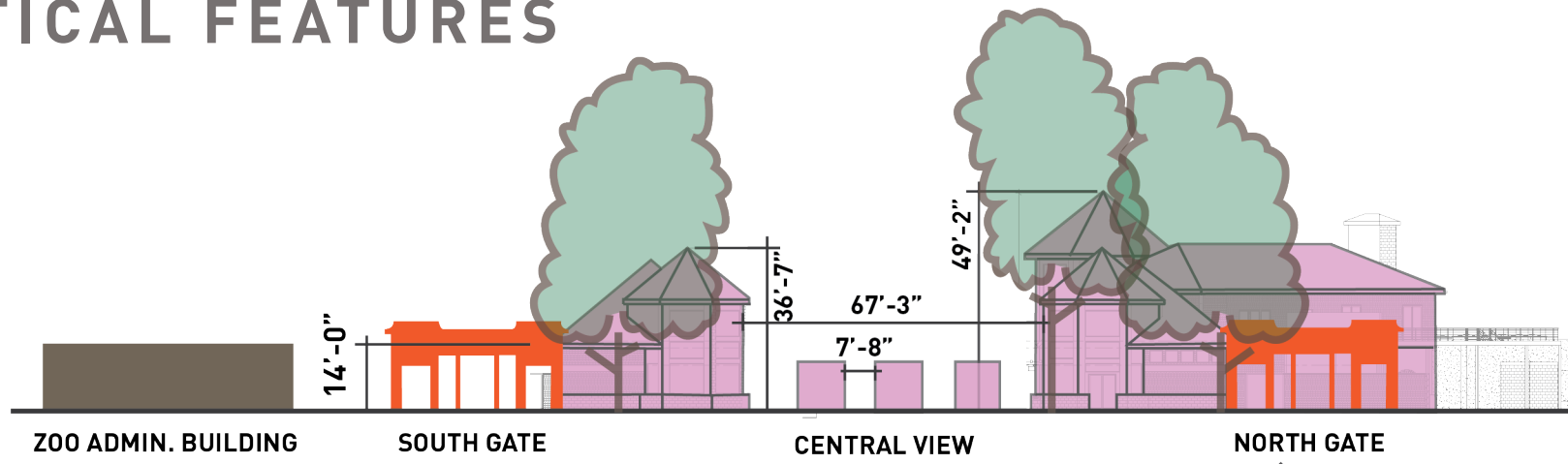
Previous Presentation | MASSING STUDY

DIAGRAM LEGEND

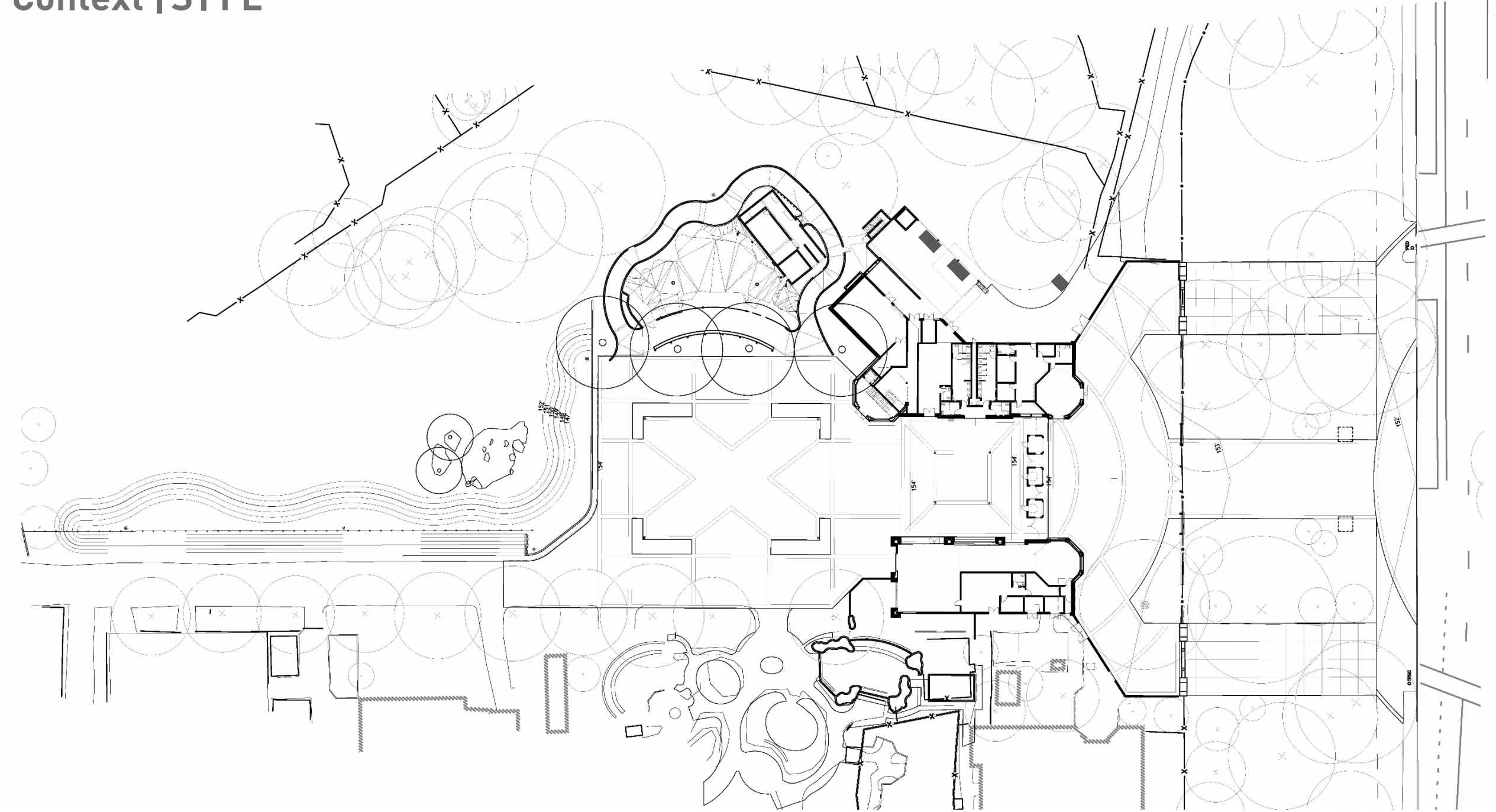
- PAVING
- VISITOR CIRCULATION
- GROUP CIRCULATION
- ZOO CIRCULATION
- PROPOSED FUTURE PATH
- GUESTS FROM GIRAFFE ENTRY
- SERVICE ACCESS



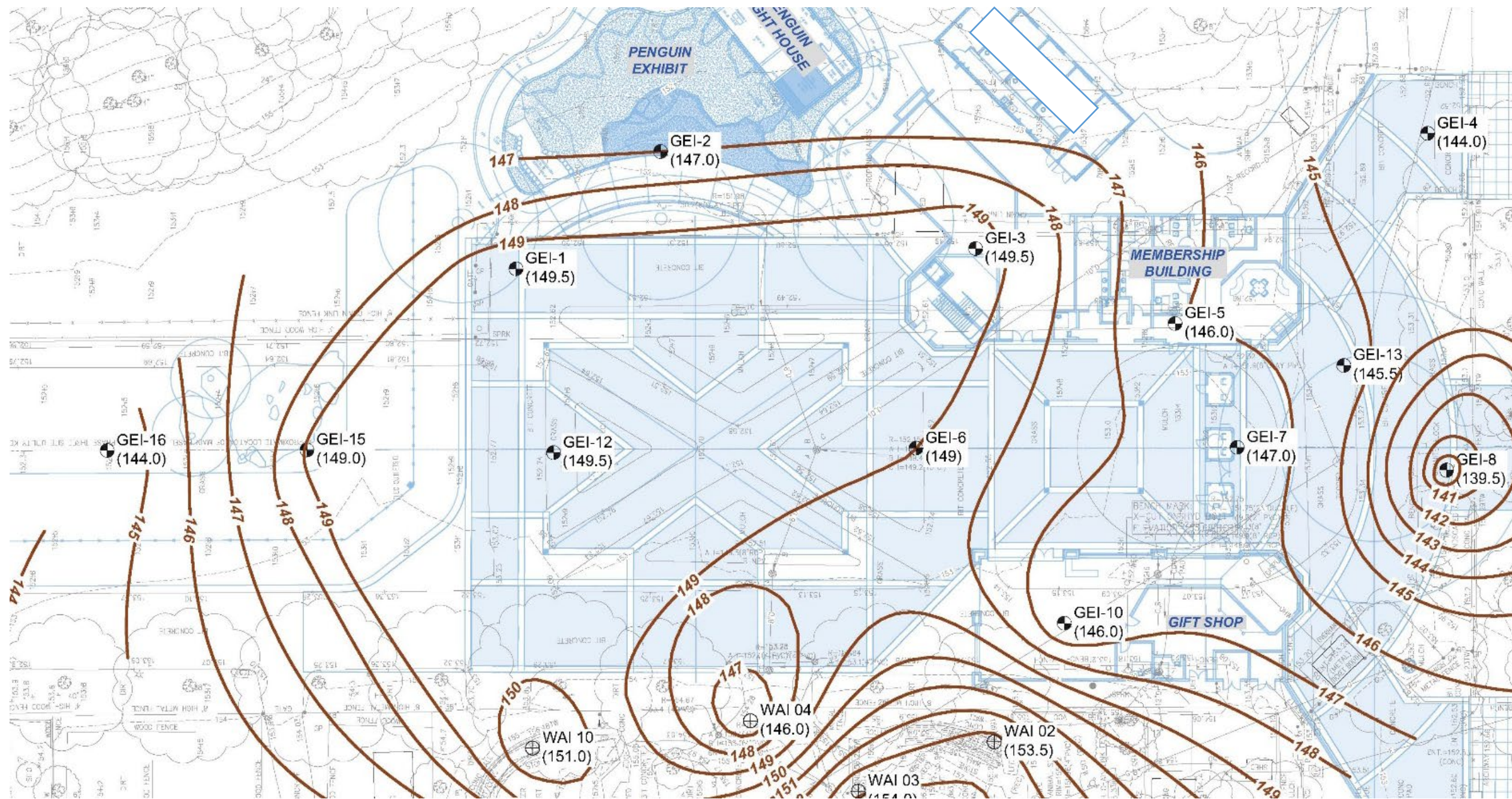
Context | VERTICAL FEATURES



Context | SITE



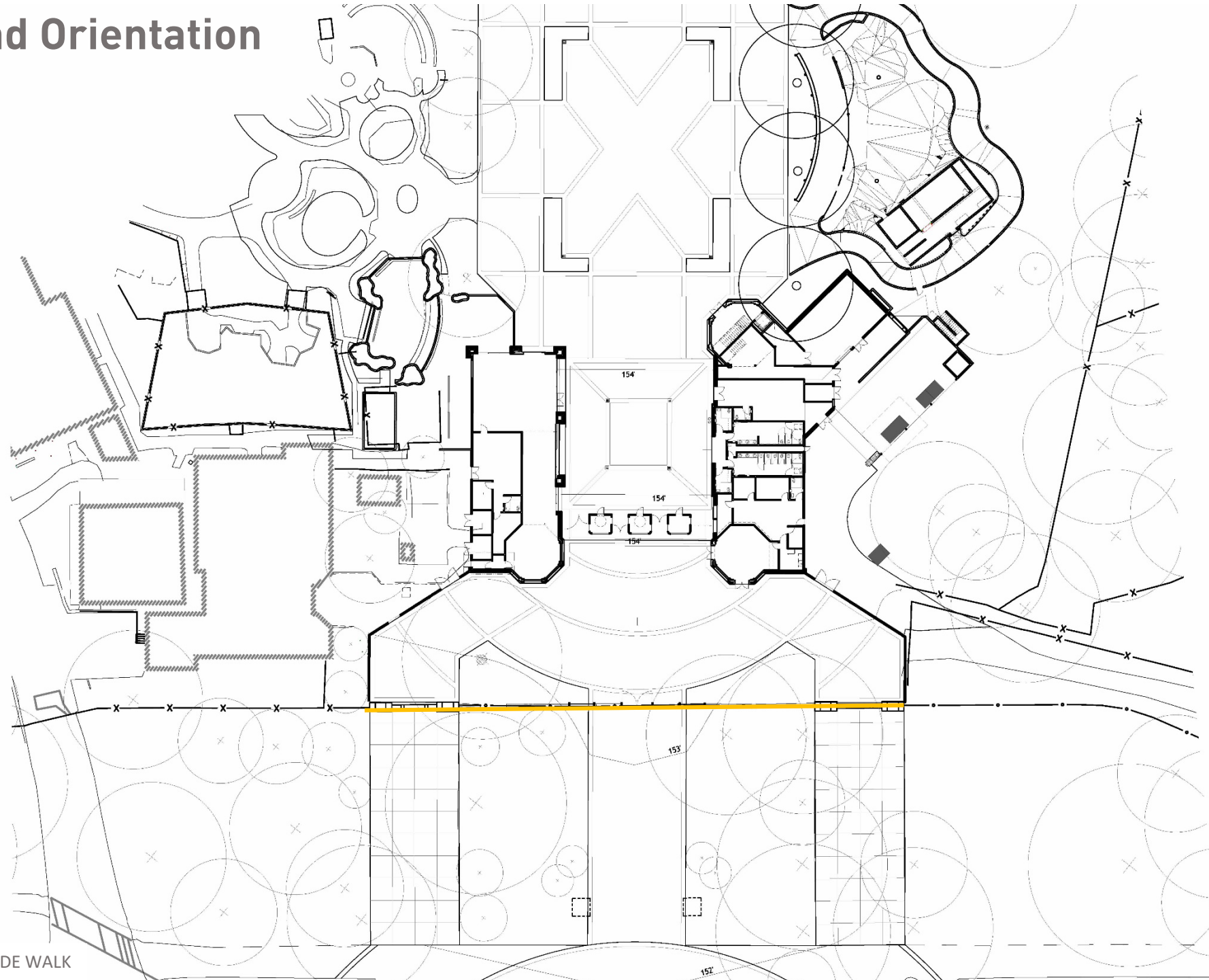
Ledge Survey



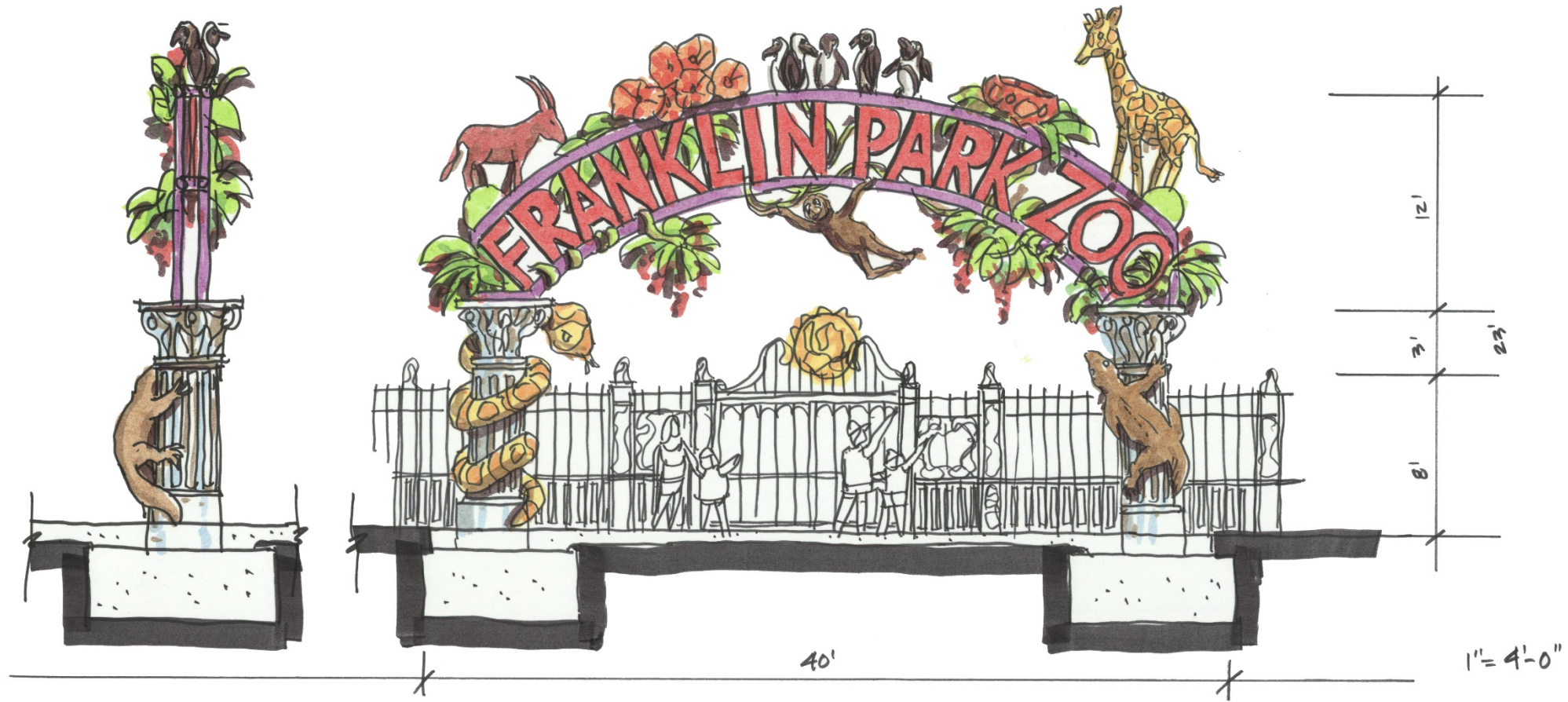
Arrival and Orientation

HISTORIC FENCE

FRANKLIN PARK ROAD SIDE WALK



Historic Fence and Proposed Entry Portal





later integral feature - historic fence



Approach | PERSPECTIVE VIEW



entry perspective inside historic gate



entry perspective outside historic gate

Approach | PERSPECTIVE VIEW



entry perspective inside historic gate



entry perspective outside historic gate

Ticket Booth Options | ELEVATION



ticket booths with individual 9:12 sloping roof "hats"



ticket booths with connecting flat roof arbor



ticket booths with connecting sloped roof arbor

Ticket Booth Options | PERSPECTIVE VIEW



ticket booths with individual 9:12 sloping roof "hats"

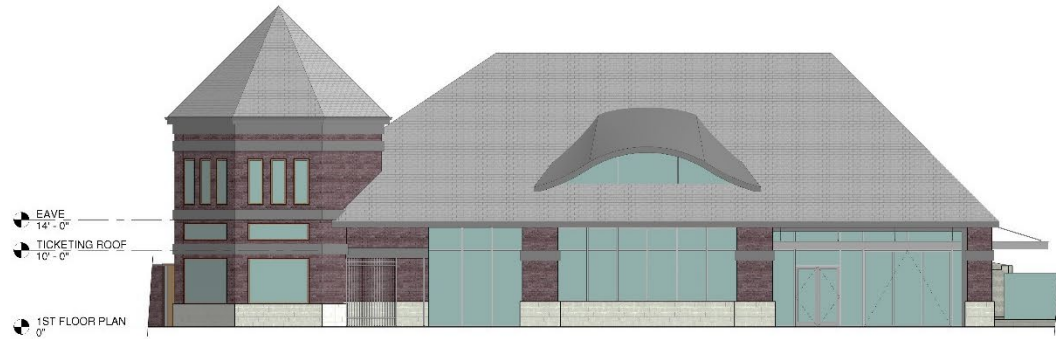


ticket booths with connecting flat roof arbor

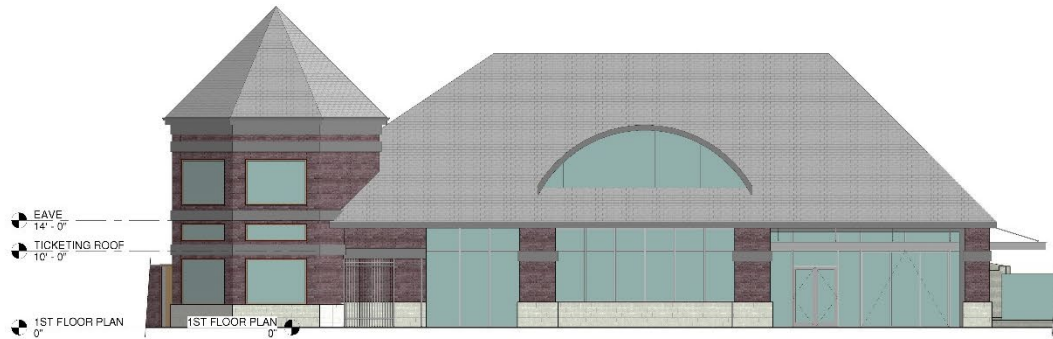
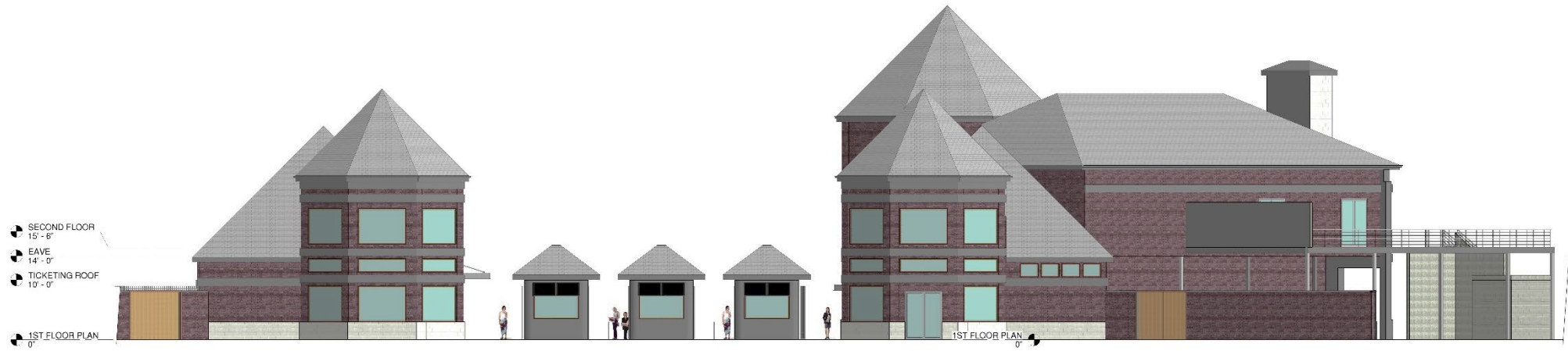


ticket booths with connecting sloped roof arbor

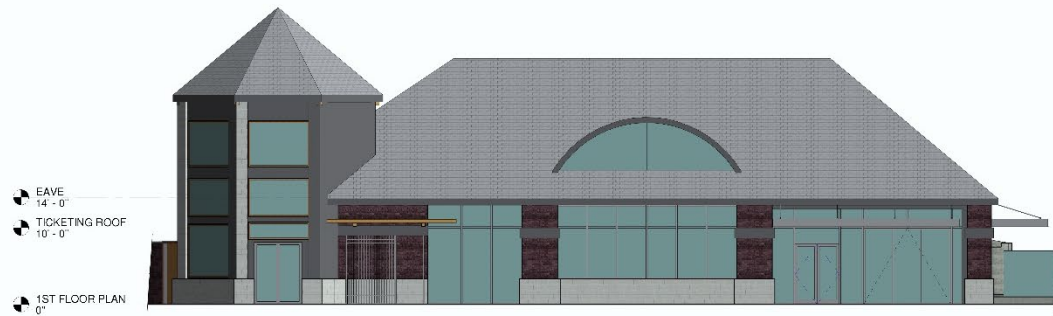
Tower Options | OPTION 1 historic fenestration & brick veneer



Tower Options | OPTION 1 contemporary fenestration & brick veneer



Tower Options | OPTION 2 contemporary fenestration & alternate veneer



Rear Perspective from Plaza | OPTIONS 1 & 2



Option 1



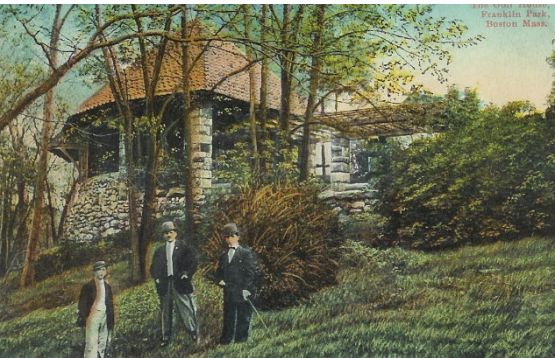
Option 2

Precedents | MATERIAL STUDIES

Newell Boat House by Peabody and Stearns



Tinley Park Train Station by Legat Architects



Franklin Park Golf House (rear)



Chestnut Hill Gatehouse



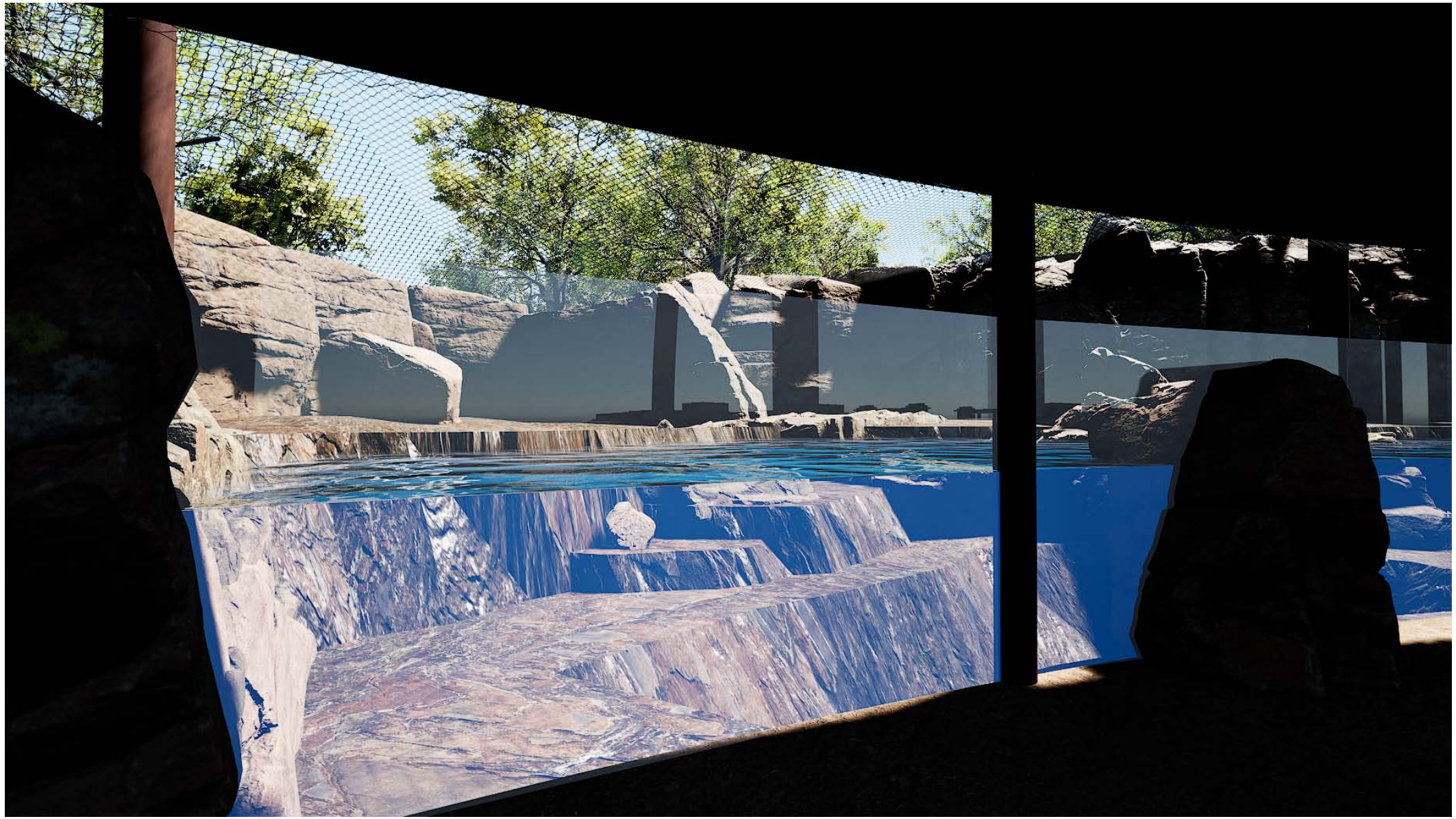
Fisher Hill Reservoir Gatehouse



South Boston Aquarium

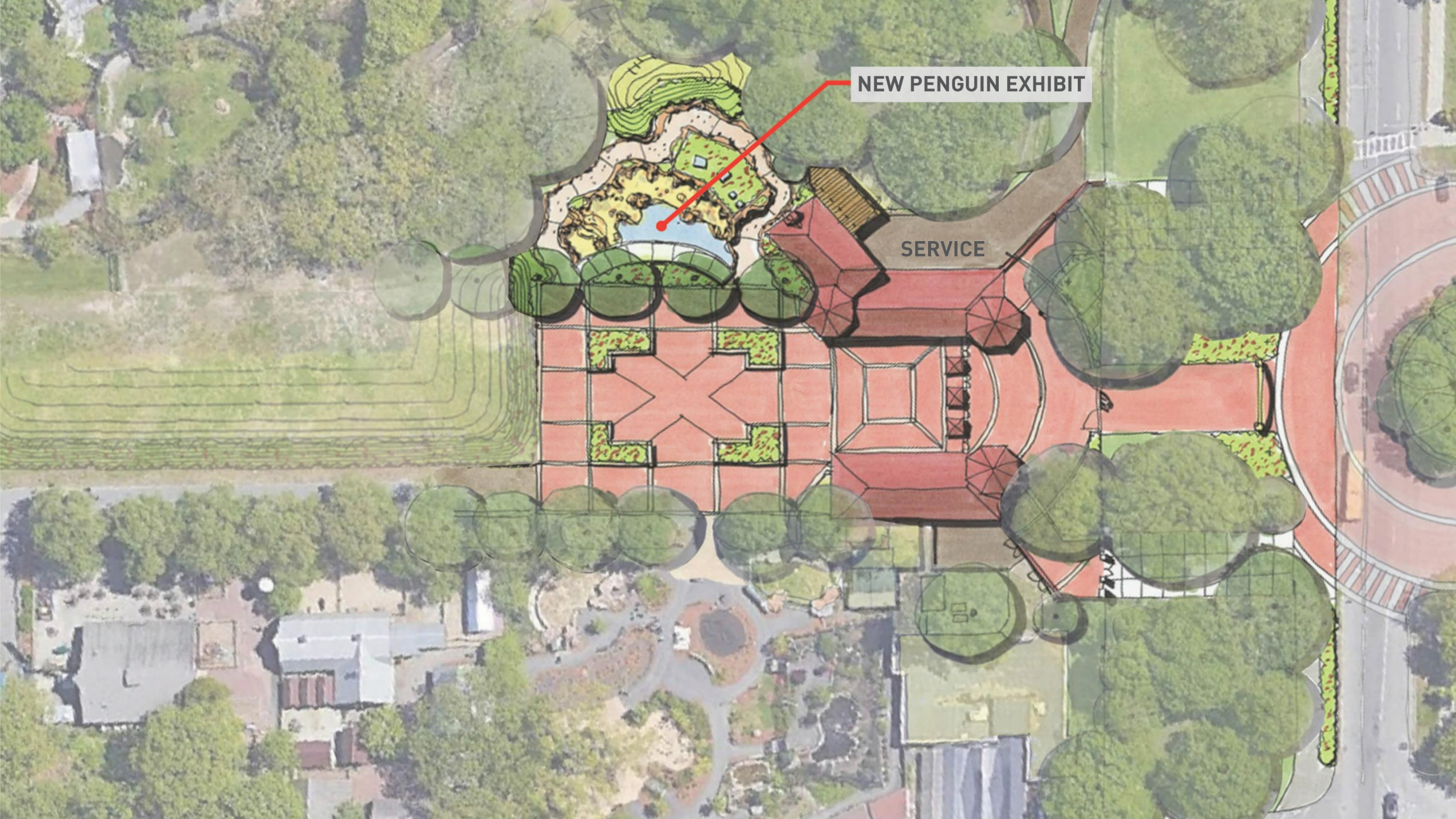
Penguin Exhibit | AFRICAN COAST











NEW PENGUIN EXHIBIT

SERVICE