



Numina Multimodal Activity Report

City of Boston

Table of Contents

Tremont Street Analyses

Trucks turning onto Boylston 3

Pedestrian crossing behavior 5

Bicycle directionality 7

Northern Avenue Analyses

Curbside management 9

Dwell times at the curb 13



Tremont Street Sensor View

The following slides examine the Coverage Area Behavior Zone, shown in green below.

Truck Screen Line



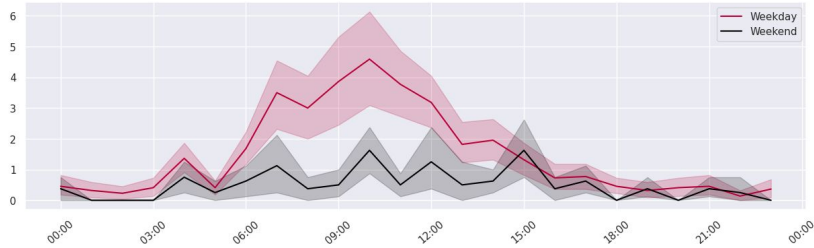
Truck Heat Map



Trucks turning onto Boylston

How many trucks turn right onto Boylston Street from Tremont Street?

Truck activity on average peaks at 10am on the weekdays and 10am on the weekends.



The average number of trucks passing through the coverage area is 29.



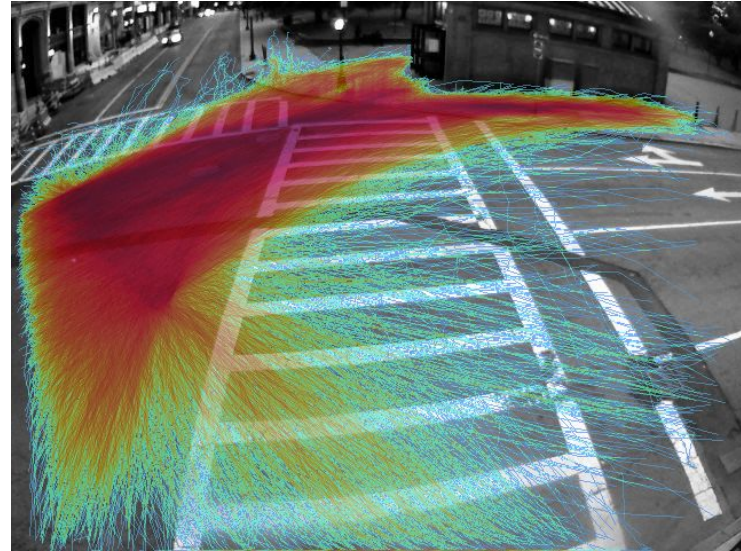
Tremont Street Sensor View

The following slides examine the Coverage Area Behavior Zone, shown in green below.

NW Diagonal Crossing Screen Line



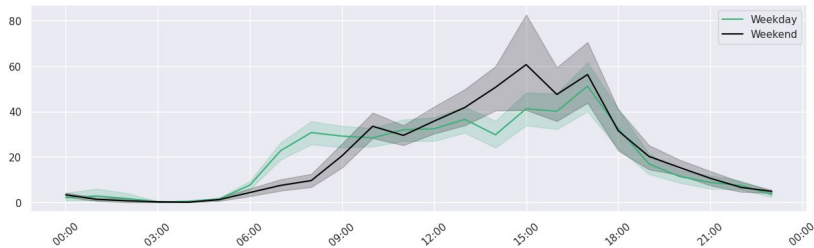
Pedestrian Heatmap



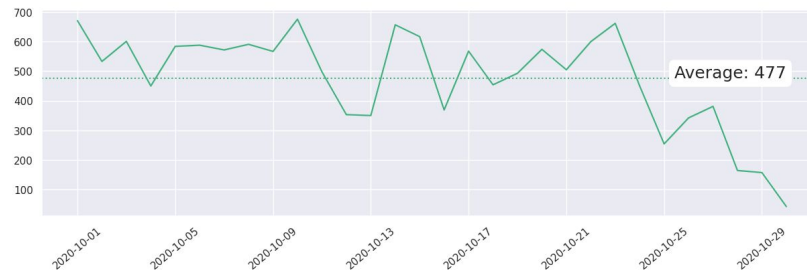
Pedestrian crossing behavior

How many pedestrians are crossing diagonally from the NW corner of Tremont and Boylston?

Pedestrian activity on average peaks at 5pm on the weekdays and 3pm on the weekends.



The average number of pedestrians passing through the coverage area is 477.



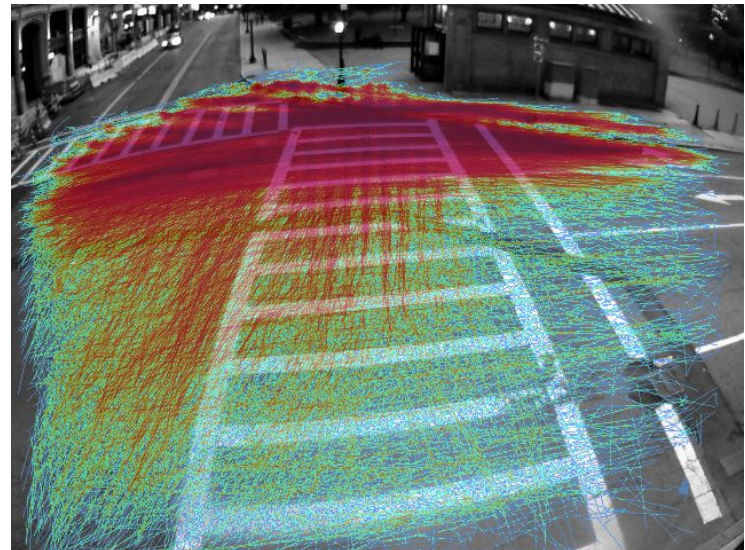
Tremont Street Sensor View

The following slides examine the Coverage Area Behavior Zone, shown in green below.

Bicycle Coverage Area



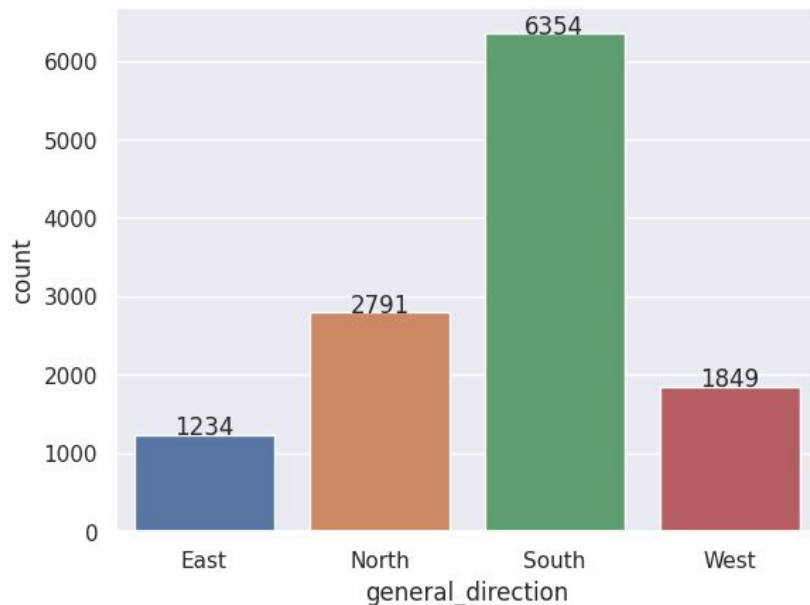
Bicycle Heatmap



Bicycle directionality

What direction are bicycles riding in at the intersection of Tremont and Boylston?

Of bicycles detected in the Coverage Area, 52% traveled South on Tremont Street, 23% traveled North on Tremont Street, 15% traveled West on Boylston Street, and 10% traveled East on Boylston Street.



Northern Ave Sensor View

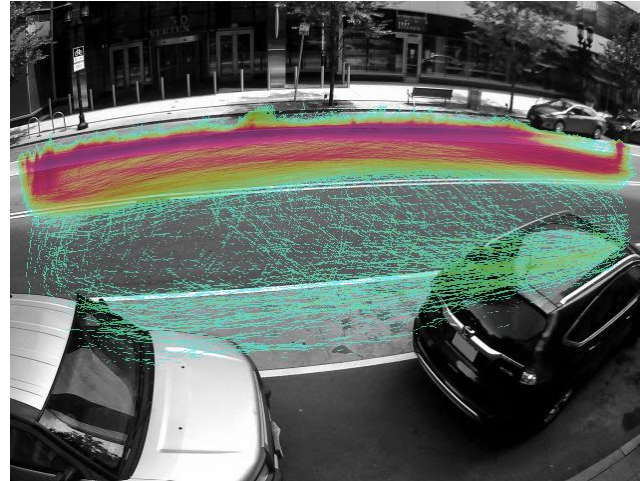
The following slides examine the Coverage Area Behavior Zone, shown in green below.

The PUDO area has a 5-minute limit and requires that the driver remain with the vehicle. The zone is intended for ride-hailing services, and for quick passenger pick up and drop off.

Pick Up / Drop Off Coverage Area



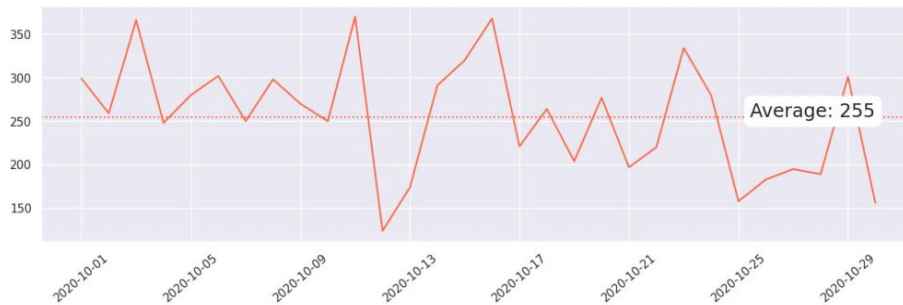
Car Heatmap



Curbside management

What is the average number of cars and trucks using the curb on Northern Avenue?

There were an average of 255 **cars** per day.



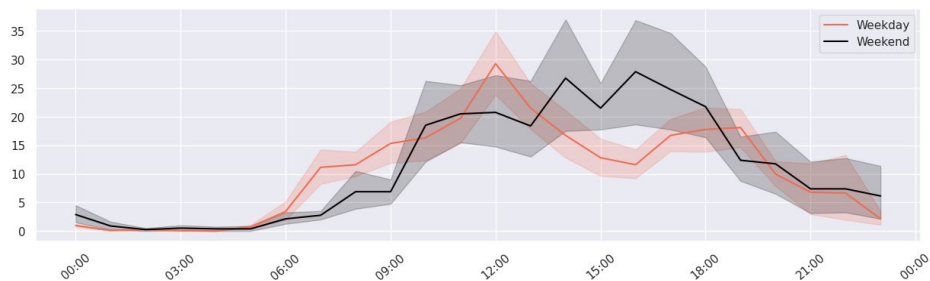
There were an average of 30 **trucks** per day.



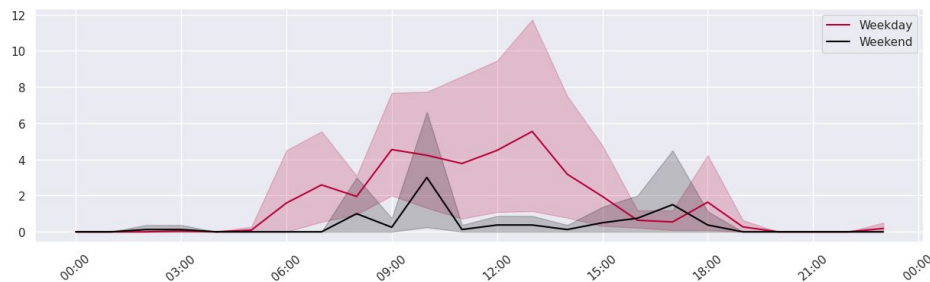
Curbside management

What is the hourly breakdown of cars and trucks using the curb on Northern Avenue?

Car activity on average peaks at 12pm on the weekdays and 4pm on the weekends.



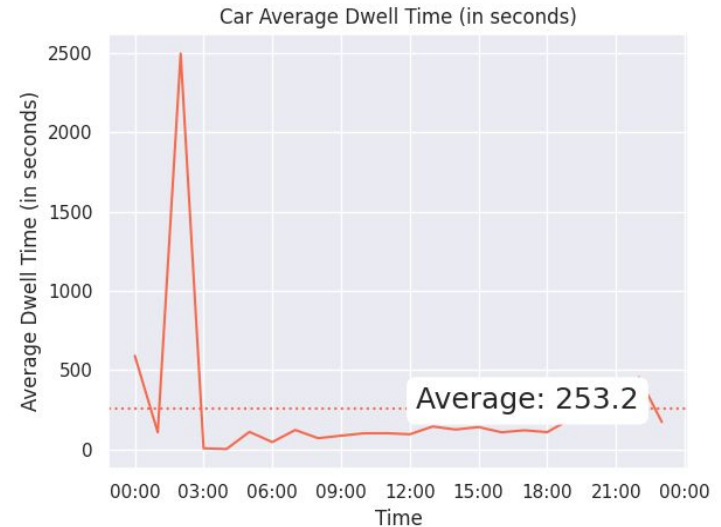
Truck activity on average peaks at 1pm on the weekdays and 10am on the weekends.



Dwell times at the curb

How long do cars dwell at the curb?

Cars dwell for an average of 253.2 seconds (4.22 minutes) at the curb.

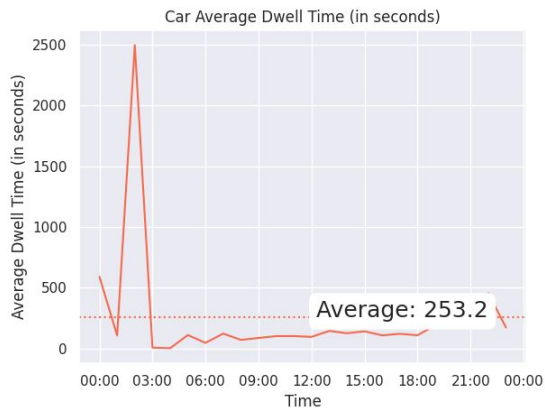


Dwell times at the curb

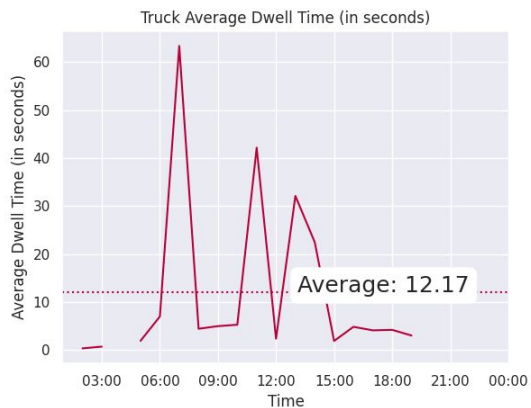
How long do cars, buses, and trucks dwell at the curb?

Cars dwell for an average of 253.2 seconds (4.22 minutes) at the curb. Trucks dwell for an average of 12.17 seconds. Buses dwell for an average of 1.53 seconds.

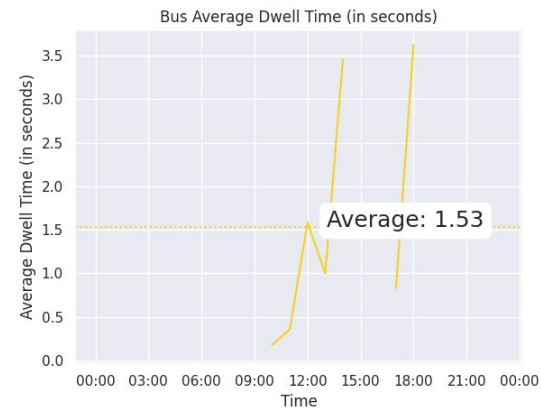
Cars



Trucks



Buses



Curbside management

What is the hourly breakdown of buses using the curb on Northern Avenue?

Bus activity on average peaks at 11pm on the weekdays and 6pm on the weekends.

