

A wide-angle photograph of a busy city street, likely in Boston, during the day. The street is filled with traffic, including cars, a blue semi-truck, and a red pickup truck. Buildings of various heights and styles line the street, with some under construction, indicated by green scaffolding. A yellow sign on the right side of the street reads "WE'RE LOCAL". The sky is clear and bright. The text "STOP & SHOP DRIVEWAY" is overlaid in large white letters in the center of the image.

STOP & SHOP DRIVEWAY

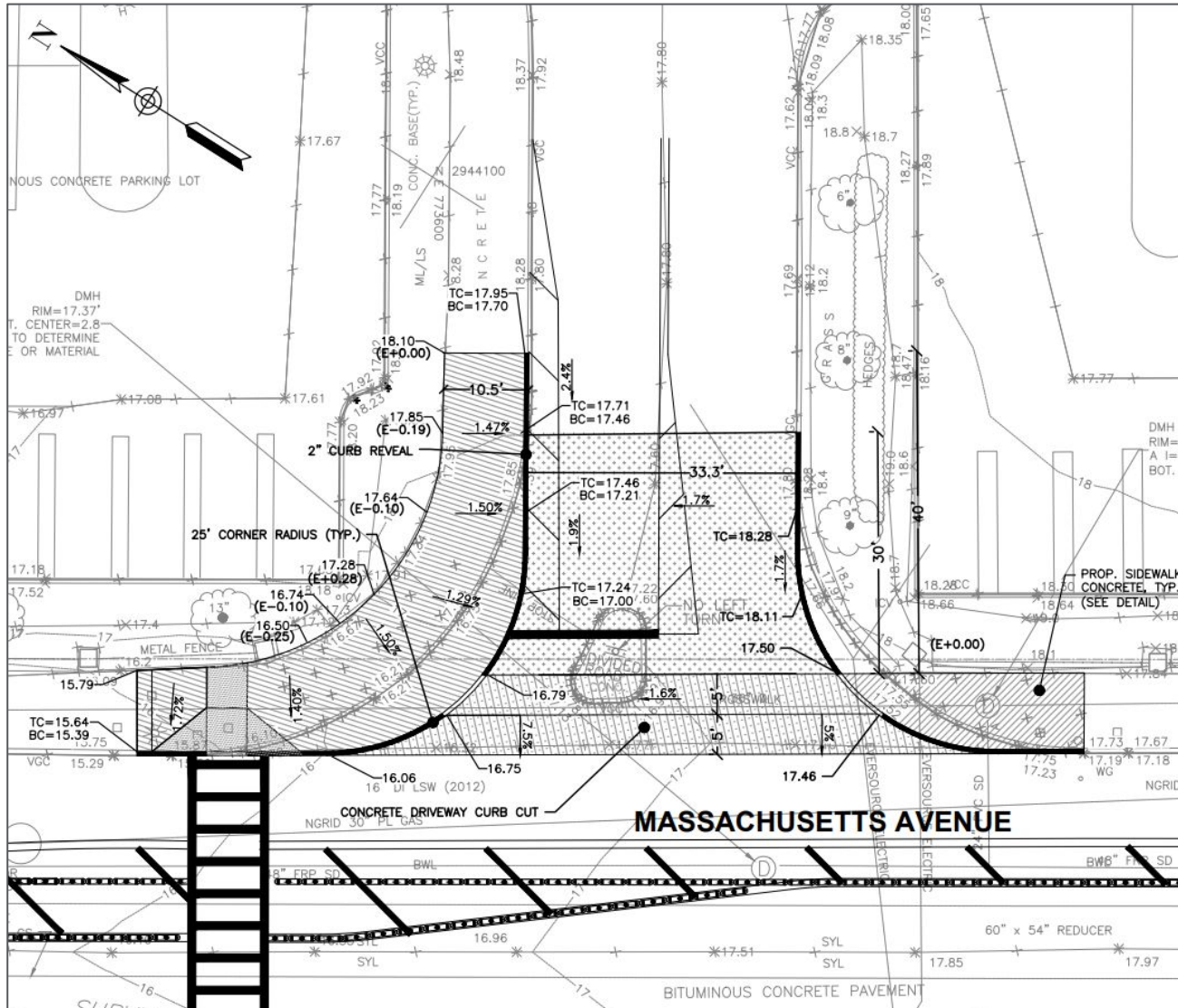
January 25, 2020

ISSUES WITH EXISTING CONDITIONS

- ▶ Existing crosswalk is not accessible for people using mobility devices
 - Ramps are not ADA compliant
 - Splitter island blocks the crosswalk
- ▶ Improving safety for people walking is a project priority
- ▶ We're reconstructing ramps, adding and realigning crosswalks
- ▶ Making this route accessible requires changes to private property











DRIVEWAY APRON DESIGN



- ▶ Level grade of crosswalk is easy for people walking, especially people using mobility devices
- ▶ Preserves maximum useable sidewalk space
- ▶ Less risk of leaf, snow, and water collection
- ▶ Preserves rights in and out of driveway

LEGEND

	NEW 6" GRANITE CURB		HOT MIX ASPHALT - REPLACE WITH 6" CEMENT CONCRETE
	GRANITE CURB TO BE RELOCATED AND/OR REMOVED		HOT MIX ASPHALT - REPLACE WITH 3" HOT MIX ASPHALT
	CEMENT CONCRETE - REPLACE WITH 6" CEMENT CONCRETE		FULL DEPTH PAVEMENT
	RAISED CROSSWALK		
	6" CEMENT CONCRETE PEDESTRIAN RAMP WITH DETECTABLE WARNING PANEL		
		#	ELEVATION
		-TC #	TOP OF CURB (TC) ELEVATION
		-BC #	BOTTOM OF CURB (BC) ELEVATION
		(E-/+)	ELEVATION DIFFERENCE TO EXISTING