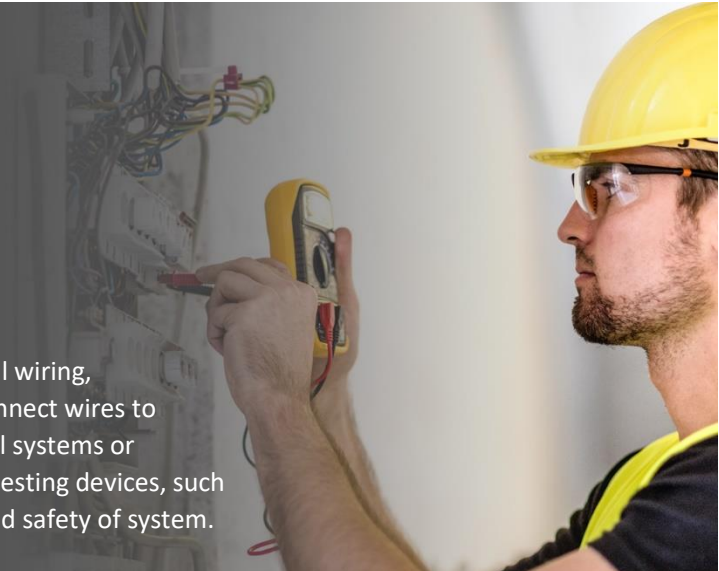


ELECTRICAL CONTRACTORS / INSTALLERS

Electrical Contractors assemble plan layout and installation of electrical wiring, equipment, or fixtures, based on job specifications and local codes; connect wires to circuit breakers, transformers, or other components; and test electrical systems or continuity of circuits in electrical wiring, equipment, or fixtures, using testing devices, such as ohmmeters, voltmeters, or oscilloscopes, to ensure compatibility and safety of system.



ENTRY-LEVEL WAGE

\$17.26

MID-LEVEL WAGE

\$26.67

HIGH-LEVEL WAGE

\$42.89

KNOWLEDGE

Building and Construction
Mechanical
Mathematics
Design
English Language

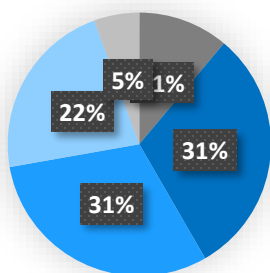
SKILLS

Troubleshooting
Repairing
Active Listening
Critical Thinking
Judgment and Decision Making

COMMON CERTIFICATIONS

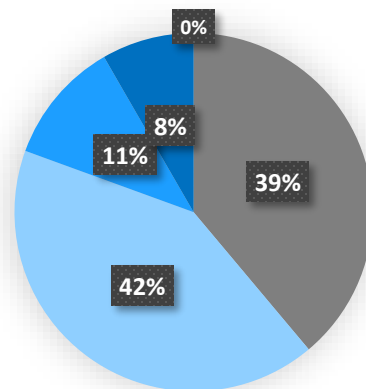
Journeyman Electrician License
Master Electrician License
OSHA 10 Hour

Required Level of Experience



- No formal work experience in comparable positions required
- Up to 12 months in a comparable position
- One to three years in a comparable position
- More than three years in a comparable position
- More than five years in a comparable position

Required Level of Education



- High school diploma or less
- Certification (Specify)
- Associate degree
- Bachelor's degree
- Master's degree or higher

Healthcare Benefits

58% Full Benefits

18% Partial Benefits
24% No Benefits

Retirement Benefits

64% With Benefits

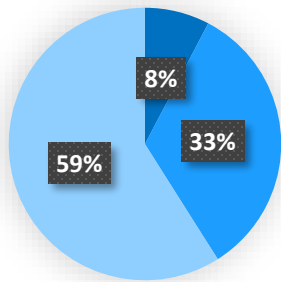
36% No Benefits

Paid Vacation

76% With Benefits

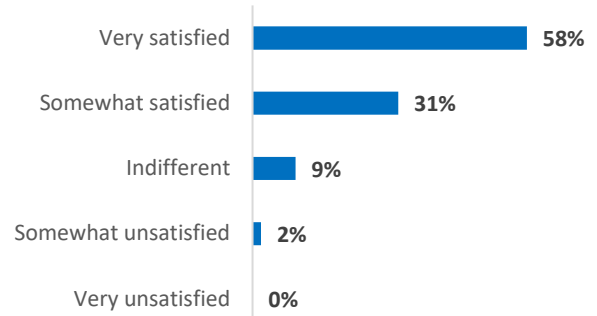
24% No Benefits

Typical Method of Promotion



- Promote from within
- Recruit from outside the organization
- Both, promote from within and recruit from outside the organization

Career Satisfaction



**- Apprentice
- Electrician**



**Electrical
Contractor**



**- Master Electrician
- Supervisor
- Project Manager**

County	Annual Openings
Barnstable	19
Berkshire	18
Bristol	56
Dukes	3
Essex	69
Franklin	4
Hampden	48
Hampshire	9
Middlesex	280
Nantucket	4
Norfolk	126
Plymouth	86
Suffolk	79
Worcester	101