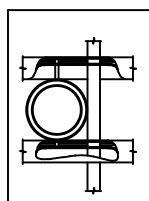


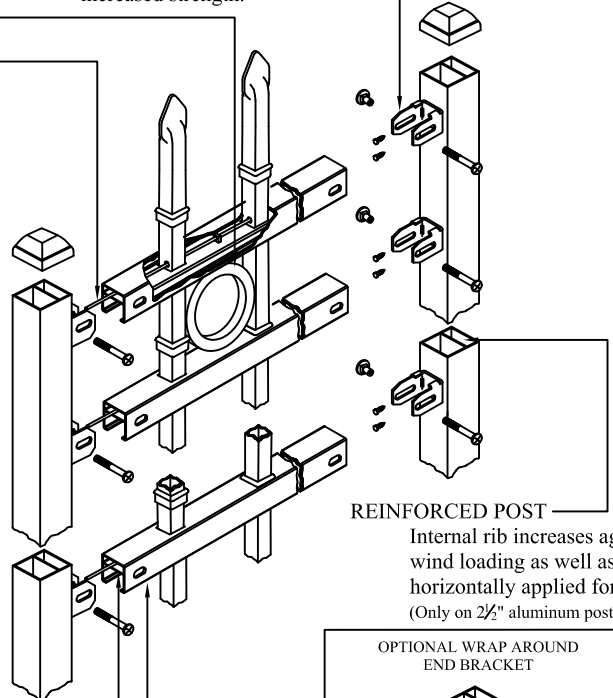
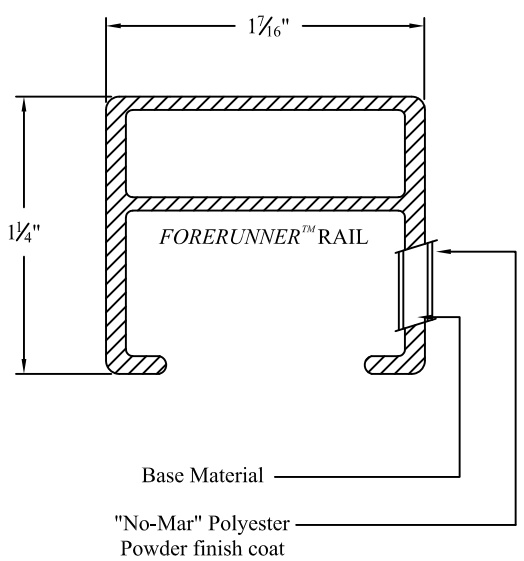
- NOTES:**
- 1.) Post size depends on fence height and wind loads. See **ECHELON Plus™** post sizing chart.
  - 2.) Panels also available for 6' on center post spacing
  - 3.) Additional heights available on request
  - 4.) Fourth rail optional.

**RING OPTION**  
Held in place with upper and lower internal retaining rods to eliminate unsightly external fasteners.

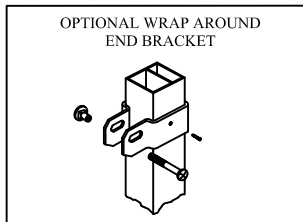


**PANEL BRACKET**  
Specially designed two-point connection ensures fixity of rail ends for increased strength.

**INTERNAL RETAINING ROD**  
Variable pitch connection system for ease of installation, high angle bias ability and elimination of unsightly external fasteners.



**INTERIOR GUIDE CHANNEL**  
Channel forms lower limit of raceway for retaining rod and allows for high angle bias ability.



**FORERUNNER™ RAIL**  
"U"-Channel specially formed high strength architectural shape.

Values shown are nominal and not to be used for installation purposes. See product specification for installation requirements.

**COMMERCIAL STRENGTH ALUMINUM**

Title: **ECHELON PLUS CLASSIC 3/4-RAIL W/RING OPTION**

DR: LJM	SH . 1 of 1	SCALE: DO NOT SCALE
CK: BS	Date 10/19/17	REV: F



**AMERISTAR®**

1555 N. Mingo  
Tulsa, OK 74116  
1-888-333-3422  
www.ameristarfence.com