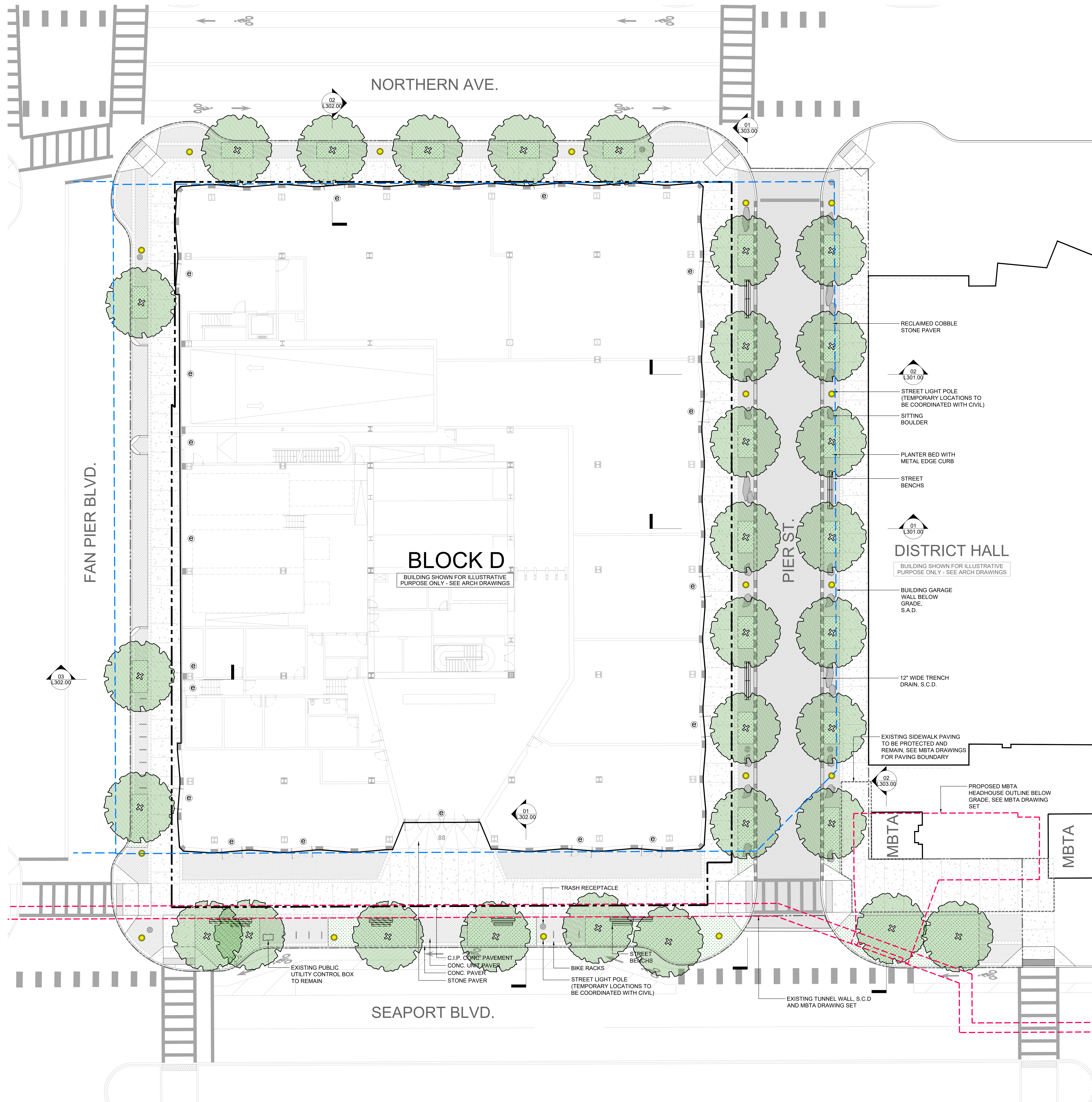


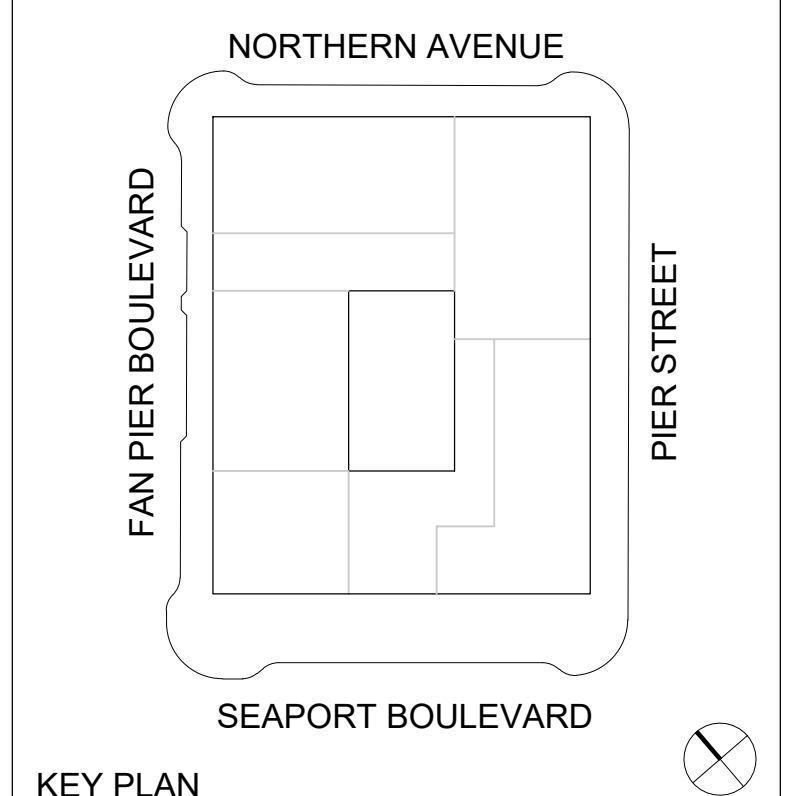
LEGEND

- PROPERTY LINE
- BUILDING FOOTPRINT LINE
- BLOCK D SITE PROJECT BOUNDARY
- BOULDER
- TRASH & RECYCLE RECEPTACLES
- STREET LIGHT POLE (TEMPORARY LOCATIONS TO BE COORDINATED WITH CIVIL)
- BENCH
- SHADE TREES
- SHRUB
- PLANTING BED
- BUILDING ENTRY



- PROJECT**
88 SEAPORT
BLOCK D BOSTON SEAPORT
- CLIENT**
WS DEVELOPMENT ASSOCIATES LLC
33 BOYLSTON STREET #300
CHESTNUT HILL, MA 02467
PH: 617.232.8900
- DESIGN ARCHITECT**
OMA*AMO ARCHITECTURE PC
180 VARICK STREET, SUITE 1328
NEW YORK, NY 10014
PH: 212.337.0770 FX: 212.337.0771
- ARCHITECT OF RECORD**
JACOBS
ONE BROADWAY, 10TH FLOOR
CAMBRIDGE, MA 02142
PH: 617.491.6450 FX: 617.491.7104
- STRUCTURAL ENGINEER**
McNAMARA SALVIA
101 FEDERAL STREET, 11TH FLOOR
BOSTON, MA 02110
PH: 617.737.0040
- MEP ENGINEERS**
WSP PARSONS BRINCKERHOFF
88 BLACK FALCON AVE., SUITE 210
BOSTON, MA 02210
PH: 617.210.1600 FX: 617.210.1800
- EXTERIOR ENVELOPE ENGINEER**
THORNTON TOMASETTI
51 MADISON AVENUE
NEW YORK, NY 10010
PH: 917.661.7800 FX: 917.661.7801
- LIGHTING DESIGNER**
DOTDASH
1500 BROADWAY, 6TH FLOOR
NEW YORK, NY 10036
PH: 212.204.4000
- GEOTECHNICAL ENGINEER**
HALEY ALDRICH
465 MEDFORD STREET SUITE 2200
BOSTON, MA 02129
PH: 617.886.7400 FX: 617.886.7600
- CIVIL ENGINEER**
NITSCH ENGINEERING
2 CENTER PLAZA, SUITE 430
BOSTON, MA 02108
PH: 617.338.0063 FX: 617.338.6472
- VERTICAL TRANSPORTATION FACADE ACCESS**
LERCH BATES
303 WYMAN STREET SUITE 351
WALTHAM, MA 02451
PH: 617.532.2020 FX: 888.819.5540
- CODE CONSULTANT**
JENSEN HUGHES
1661 WORCHESTER ROAD, SUITE 501
FRAMINGHAM, MA 01701
PH: 508.620.8900 FX: 508.620.0908
- ACOUSTICS**
ACENTECH
33 MOULTON STREET
CAMBRIDGE, MA 02138
PH: 617.499.8086
- SUSTAINABILITY**
THE GREEN ENGINEER
23 BRADFORD STREET, 1ST FLOOR
CONCORD, MA 01742
PH: 978.369.8978
- LANDSCAPE ARCHITECT**
JAMES CORNER FIELD OPERATIONS
475 10TH AVE #9
NEW YORK, NY 10018
PH: 212.433.1450

NO.	ISSUE DATE	COMMENTS
02	10/27/2021	DD in Progress - Draft
01	05/28/2021	100% SCHEMATIC DESIGN



**NOT FOR BID
NOT FOR
CONSTRUCTION**

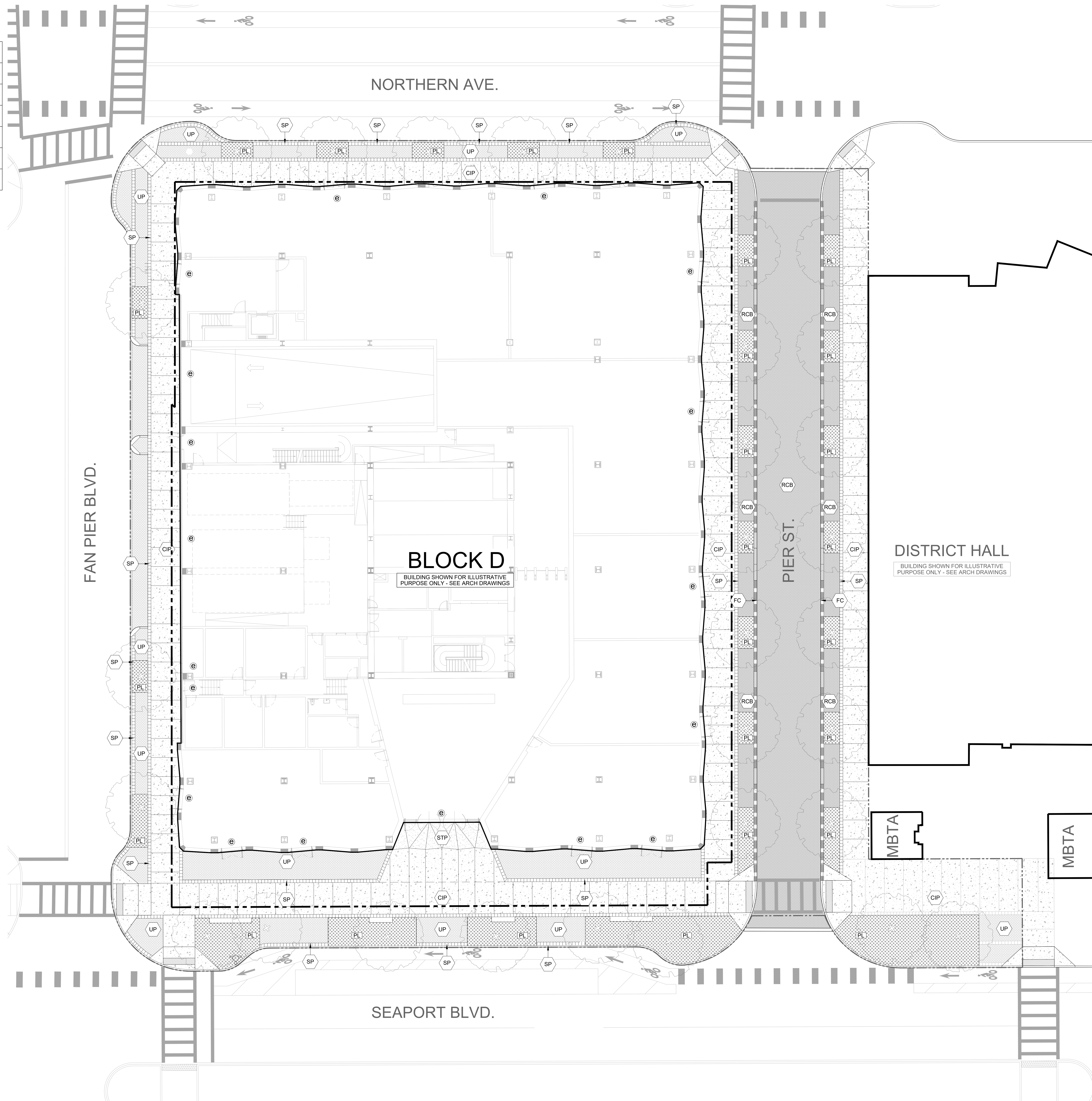
STAMP
20010099-2 48"x36" JCFD
PROJ. NO. FORMAT DRAWN BY
SCALE: 1"=10' DATE: 05/28/2021

SITE LAYOUT PLAN
DRAWING TITLE

L-110
DRAWING NUMBER

MATERIAL SCHEDULE

KEY	SYMBOL	DESCRIPTION	QTY	DETAIL
	(RCB)	RECLAIMED COBBLE STONE 4"X8"		
	(CIP)	C.I.P CONCRETE		
	(SP)	CONC. UNIT PAVER 12"X12"		
	(UP)	CONC. UNIT PAVER 6"X12"		
	(STP)	STONE PAVER		
	(FC)	FLUSH CURB		
	(PL)	PLANTING		



PROJECT
88 SEAPORT
BLOCK D BOSTON SEAPORT

CLIENT
WS DEVELOPMENT ASSOCIATES LLC
33 BOYLSTON STREET #300
CHESTNUT HILL, MA 02467
PH: 617.232.8900

DESIGN ARCHITECT
OMA*AMO ARCHITECTURE PC
180 VARICK STREET, SUITE 1328
NEW YORK, NY 10014
PH: 212.337.0770 FX: 212.337.0771

ARCHITECT OF RECORD
JACOBS
ONE BROADWAY, 10TH FLOOR
CAMBRIDGE, MA 02142
PH: 617.491.6450 FX: 617.491.7104

STRUCTURAL ENGINEER
McNAMARA SALVIA
101 FEDERAL STREET, 11TH FLOOR
BOSTON, MA 02110
PH: 617.737.0040

MEP ENGINEERS
WSP PARSONS BRINCKERHOFF
88 BLACK FALCON AVE., SUITE 210
BOSTON, MA 02210
PH: 617.210.1600 FX: 617.210.1800

EXTERIOR ENVELOPE ENGINEER
THORNTON TOMASETTI
51 MADISON AVENUE
NEW YORK, NY 10010
PH: 917.661.7800 FX: 917.661.7801

LIGHTING DESIGNER
DOTDASH
1500 BROADWAY, 6TH FLOOR
NEW YORK, NY 10036
PH: 212.204.4000

GEOTECHNICAL ENGINEER
HALEY ALDRICH
465 MEDFORD STREET SUITE 2200
BOSTON, MA 02129
PH: 617.886.7400 FX: 617.886.7600

CIVIL ENGINEER
NITSCH ENGINEERING
2 CENTER PLAZA, SUITE 430
BOSTON, MA 02108
PH: 617.338.0063 FX: 617.338.6472

**VERTICAL TRANSPORTATION
FACADE ACCESS**
LERCH BATES
303 WYMAN STREET SUITE 351
WALTHAM, MA 02451
PH: 617.532.2020 FX: 888.819.5540

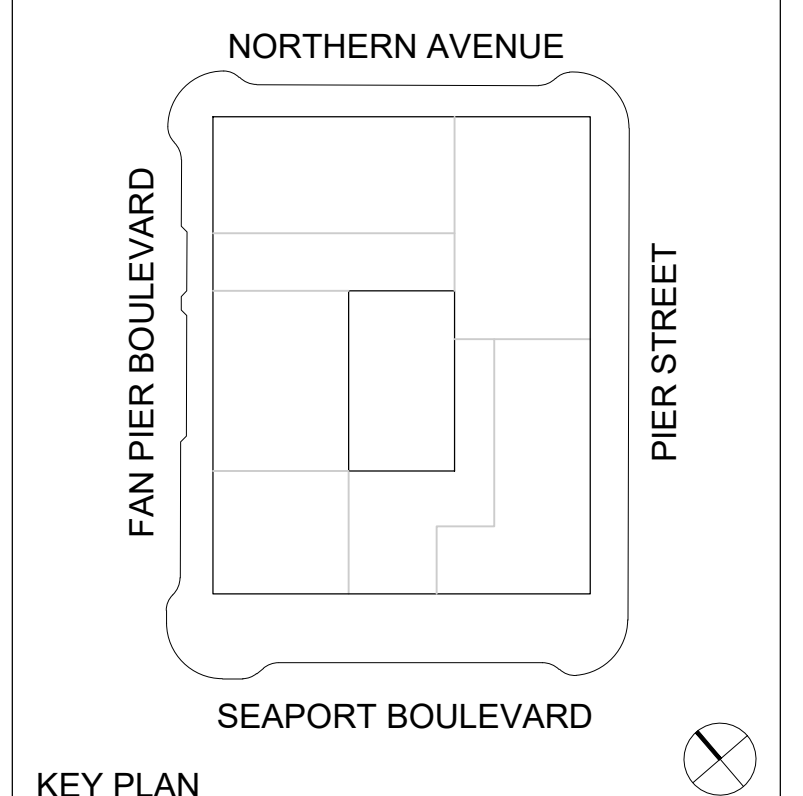
CODE CONSULTANT
JENSEN HUGHES
1661 WORCHESTER ROAD, SUITE 501
FRAMINGHAM, MA 01701
PH: 508.620.8900 FX: 508.620.0908

ACOUSTICS
ACENTECH
33 MOULTON STREET
CAMBRIDGE, MA 02138
PH: 617.499.8086

SUSTAINABILITY
THE GREEN ENGINEER
23 BRADFORD STREET, 1ST FLOOR
CONCORD, MA 01742
PH: 978.369.8978

LANDSCAPE ARCHITECT
JAMES CORNER FIELD OPERATIONS
475 10TH AVE #9
NEW YORK, NY 10018
PH: 212.433.1450

02 10/27/2021 DD in Progress - Draft
01 05/28/2021 100% SCHEMATIC DESIGN
NO. ISSUE DATE COMMENTS



**NOT FOR BID
NOT FOR
CONSTRUCTION**

STAMP
20010099-2 48"X36" JCFD
PROJ. NO. FORMAT DRAWN BY
SCALE: 1" = 10' DATE: 05/28/2021

MATERIAL PLAN

DRAWING TITLE

L-120

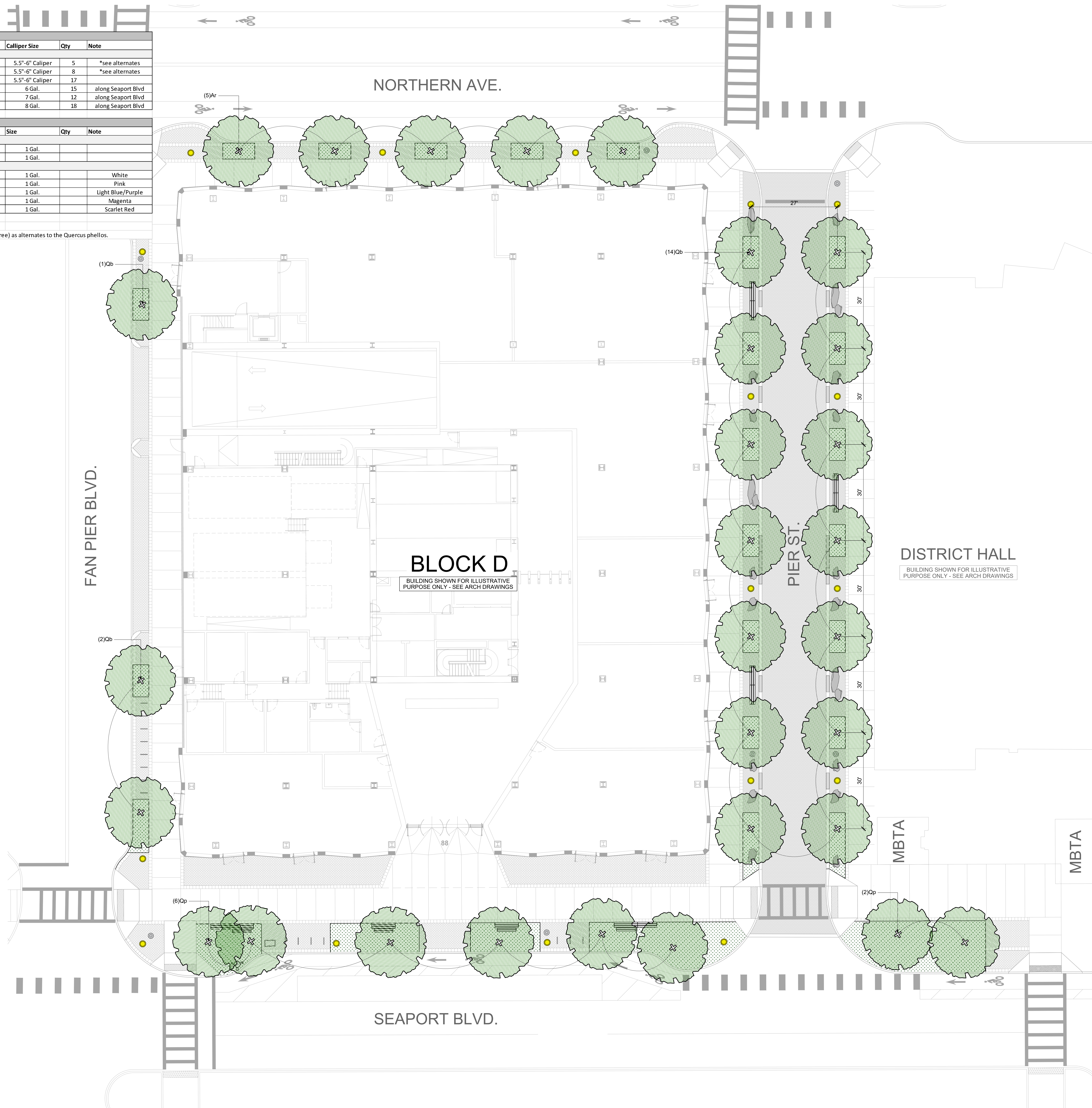
DRAWING NUMBER

PLANTING SCHEDULE

TREES + SHRUBS					
Sym.	Botanical Name	Common Name	Calliper Size	Qty	Note
Ar	<i>Acer rubrum</i>	Red Maple	5.5"-6" Caliper	5	*see alternates
Qp	<i>Quercus phellos</i>	Willow Oak	5.5"-6" Caliper	8	*see alternates
Qb	<i>Quercus bicolor</i>	Swamp White Oak	5.5"-6" Caliper	17	
Fg	<i>Fothergilla gardenii</i>	Dwarf Fothergilla	6 Gal.	15	along Seaport Blvd
Iv	<i>Ilex verticillata</i>	Winterberry Holly	7 Gal.	12	along Seaport Blvd
Rr	<i>Rosa virginiana</i>	Virginia Rose	8 Gal.	18	along Seaport Blvd

SHADE MIX					
Sym.	Botanical Name	Common Name	Size	Qty	Note
Grasses					
PaV	<i>Panicum virgatum</i>	Switch Grass	1 Gal.		
SeA	<i>Sesleria Autumnalis</i>	Autumn Moore Grass	1 Gal.		
Perennials					
AnC	<i>Anemone canadensis</i>	Anemone	1 Gal.		White
EcA	<i>Echinacea angustifolia</i>	Narrow Leaf Cornflower	1 Gal.		Pink
LaA	<i>Lavandula angustifolia</i>	English Lavender	1 Gal.		Light Blue/Purple
LiS	<i>Liatris spicata</i>	Spike Gayfeather	1 Gal.		Magenta
MoD	<i>Monarda didyma</i>	Bee Balm	1 Gal.		Scarlet Red

* Tilia americana (American Linden) as an alternate to the Acer rubrum.
 * Quercus palustris (Pin Oak) and Gymnocladus dioicus (Kectucky Coffee Tree) as alternates to the Quercus phellos.



PROJECT
 88 SEAPORT
 BLOCK D BOSTON SEAPORT

CLIENT
 WS DEVELOPMENT ASSOCIATES LLC
 33 BOYLSTON STREET #300
 CHESTNUT HILL, MA 02467
 PH: 617.232.8900

DESIGN ARCHITECT
 OMA*AMO ARCHITECTURE PC
 180 VARICK STREET, SUITE 1328
 NEW YORK, NY 10014
 PH: 212.337.0770 FX: 212.337.0771

ARCHITECT OF RECORD
JACOBS
 ONE BROADWAY, 10TH FLOOR
 CAMBRIDGE, MA 02142
 PH: 617.491.6450 FX: 617.491.7104

STRUCTURAL ENGINEER
McNAMARA SALVIA
 101 FEDERAL STREET, 11TH FLOOR
 BOSTON, MA 02110
 PH: 617.737.0040

MEP ENGINEERS
WSP PARSONS BRINCKERHOFF
 88 BLACK FALCON AVE., SUITE 210
 BOSTON, MA 02210
 PH: 617.210.1600 FX: 617.210.1800

EXTERIOR ENVELOPE ENGINEER
THORNTON TOMASETTI
 51 MADISON AVENUE
 NEW YORK, NY 10010
 PH: 917.661.7800 FX: 917.661.7801

LIGHTING DESIGNER
DOTDASH
 1500 BROADWAY, 6TH FLOOR
 NEW YORK, NY 10036
 PH: 212.204.4000

GEOTECHNICAL ENGINEER
HALEY ALDRICH
 465 MEDFORD STREET SUITE 2200
 BOSTON, MA 02129
 PH: 617.886.7400 FX: 617.886.7600

CIVIL ENGINEER
NITSCH ENGINEERING
 2 CENTER PLAZA, SUITE 430
 BOSTON, MA 02108
 PH: 617.338.0063 FX: 617.338.6472

VERTICAL TRANSPORTATION
FACADE ACCESS
LERCH BATES
 303 WYMAN STREET SUITE 351
 WALTHAM, MA 02451
 PH: 617.532.2020 FX: 888.819.5540

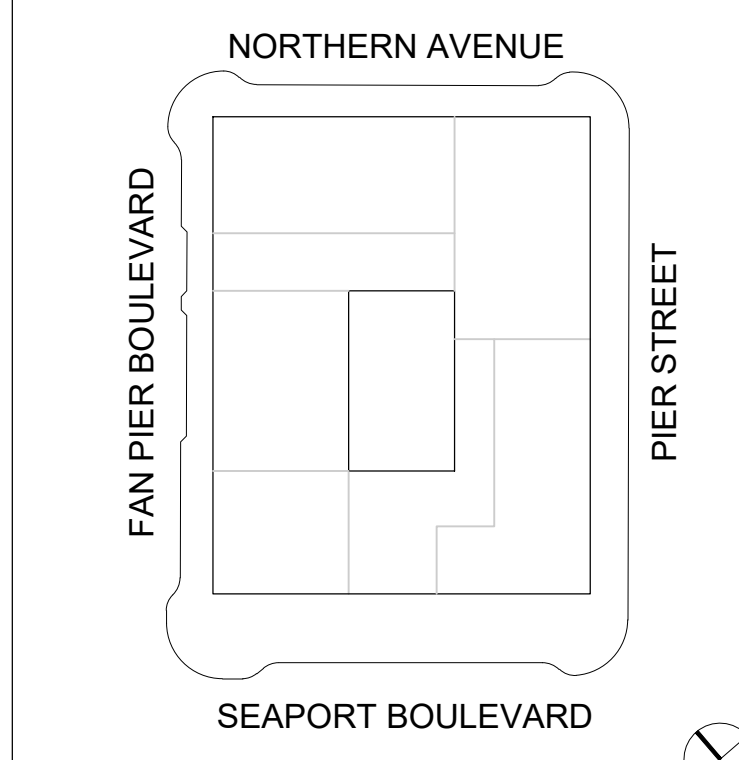
CODE CONSULTANT
JENSEN HUGHES
 1661 WORCHESTER ROAD, SUITE 501
 FRAMINGHAM, MA 01701
 PH: 508.620.8900 FX: 508.620.0908

ACOUSTICS
ACENTECH
 33 MOULTON STREET
 CAMBRIDGE, MA 02138
 PH: 617.499.8086

SUSTAINABILITY
THE GREEN ENGINEER
 23 BRADFORD STREET, 1ST FLOOR
 CONCORD, MA 01742
 PH: 978.369.8978

LANDSCAPE ARCHITECT
JAMES CORNER FIELD OPERATIONS
 475 10TH AVE #9
 NEW YORK, NY 10018
 PH: 212.433.1450

02	10/27/2021	DD in Progress - Draft
01	05/28/2021	100% SCHEMATIC DESIGN
NO.	ISSUE DATE	COMMENTS



NOT FOR BID
NOT FOR
CONSTRUCTION

STAMP
 20010099-2 48"x36" JCF
 PROJ. NO. FORMAT DRAWN BY

SCALE: 1" = 10' DATE: 05/28/2021

PLANTING PLAN
 DRAWING TITLE
L-150
 DRAWING NUMBER