



**Board of Health Meeting
June 8, 2022
4:00 pm**

AGENDA

- 1. Chairperson's Remarks**
- 2. Executive Office Report**
- 3. Acceptance and Approval of Minutes from the
April 20th Meeting**
- 4. FY23 Budget Update and Vote**
- 5. COVID-19 Update**
- 6. Unsheltered Homelessness and Substance Use
Disorder Update**
- 7. Adjourn**

Executive Office Report

01

Leading Boston's
COVID-19
Response and
Recovery
Activities

02

Advancing Work
to Understand and
Eliminate Health
Inequities

03

Addressing the
Public Health
Crisis Centered in
the Mass Cass
Area

04

Initiating Process
to Develop
Prevention and
Response Models
to Mental Health,
Substance Use,
and Wellness

05

Maintaining
Delivery of Core
Public Health
Services While
Working to
Strengthen Our
Public Health
Workforce

Acceptance and Approval, April 20th Meeting Minutes



FY23 Budget Update

Timothy J. Harrington

Director, Administration & Finance

June 8, 2022

Budget Schedule

- FY22 Budget
 - Year end close June 30, 2022
- FY23 Budget
 - Proposed maintenance budget and new investment requests submitted in March
 - City Council hearing on BPHC budget May 17th
 - Board vote on recommended budget June 8th

FY23 Recommended Budget

Bureau	FY22 Adopted	FY23 Recommended	Variance	% Change
ORS/BRS	8,660,208	8,987,229	327,021	3.78%
CAFH	14,566,584	14,755,709	189,125	1.30%
CIB	5,792,593	5,920,234	127,641	2.20%
EMS	68,005,888	71,512,681	3,506,793	5.16%
HSB	7,478,272	8,092,965	614,692	8.22%
IDB	6,143,871	6,302,999	159,127	2.59%
PHSC	18,579,122	22,154,990	3,575,869	19.25%
ADMIN	10,092,457	10,574,641	482,184	4.78%
PROPERTY	4,850,480	5,061,409	210,929	4.35%
EMS Revenue	35,691,886	37,888,780	2,196,894	6.16%
OPEB	2,250,000	2,250,000	-	0.00%
Total City Appropriation	110,727,590	117,724,077	6,996,487	6.32%

FY23 Maintenance Internal FTE

Bureau	FY22 Internal FTE	FY23 Internal FTE	Difference
ORS/BRS	79.67	80.67	1.00
CAFH	100.35	100.25	(0.10)
CIB	48.94	48.94	-
EMS	425.00	449.00	24.00
HSB	71.70	71.70	-
IDB	33.46	34.21	0.75
PHSC	65.50	82.50	17.00
ADMIN	113.25	114.60	1.35
PROPERTY	23.00	23.00	-
Total	960.87	1,004.87	44.00

New Investments

- Mayor's Office has approved the inclusion of our requested new initiatives into the proposed FY23 operating budget:
 - 20 FTEs for Boston EMS to staff two additional ambulances
 - 4 FTEs for Boston EMS to staff new alternative response unit
 - 4 FTEs for the Chief Behavioral Health Officer and staff
 - 12 FTEs for Office of Public Health Preparedness to increase the City's Public Health and Medical Response to Emergencies
 - Epidemiologist dedicated to Recovery Services and storage costs for client belongings
- Must receive final approval by City Council. Hearing was held with the Council on May 17.

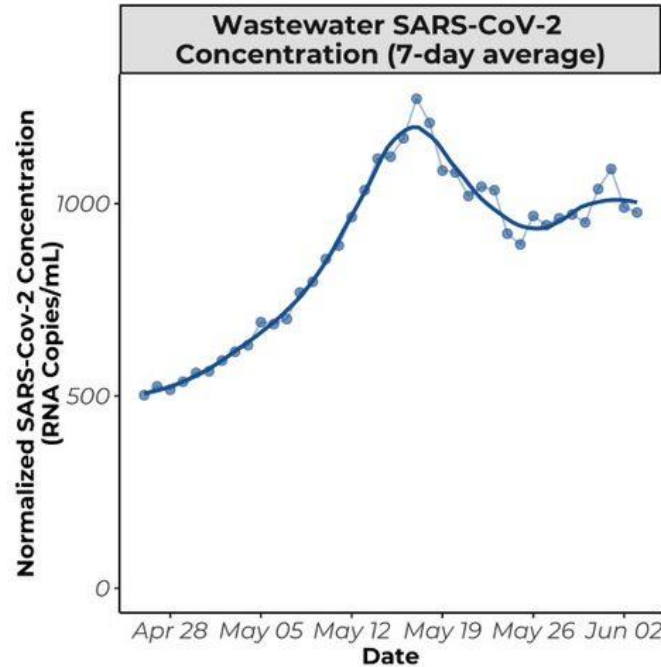
Request for Additional ARPA Funding

- \$20M for COVID-19. City's guidance is to fund the core pandemic responses: vaccination, testing, PPE, nursing staff, wastewater surveillance, and shelter cleaning
 - Goal is to plan for uncertainty, with City's and City Council's input over the next several weeks
- \$12M to support the new Center for Behavioral Health and Wellness
- \$6M for substance use crisis; to ensure that critical response services for harm reduction, outreach response and recovery services are sustained and expanded across the city.
- City Council hearing June 3

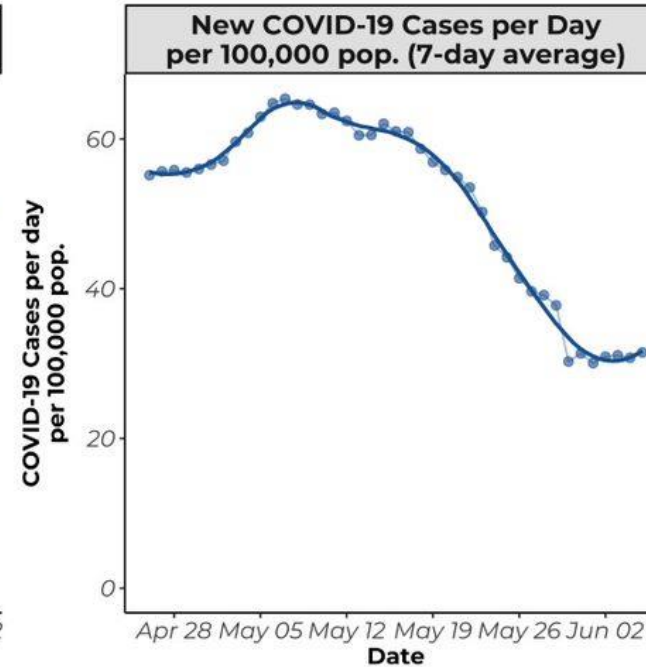
Vote to Adopt BPHC's FY23 Recommended Budget

COVID-19 Update

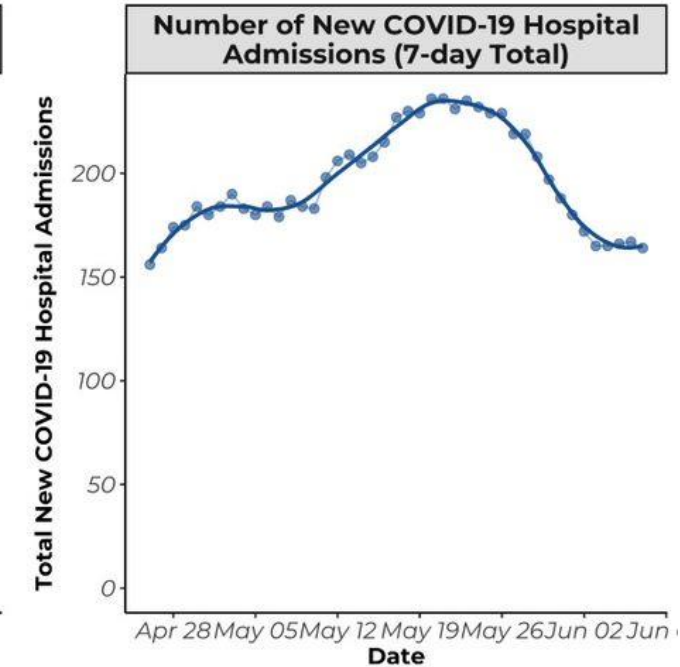
COVID-19 Update



977 RNA copies/mL	Data through: 03-June-2022
7-day trend Stable	+7.0% over the past 7 days
14-day trend Stable	-2.0% over the past 14 days

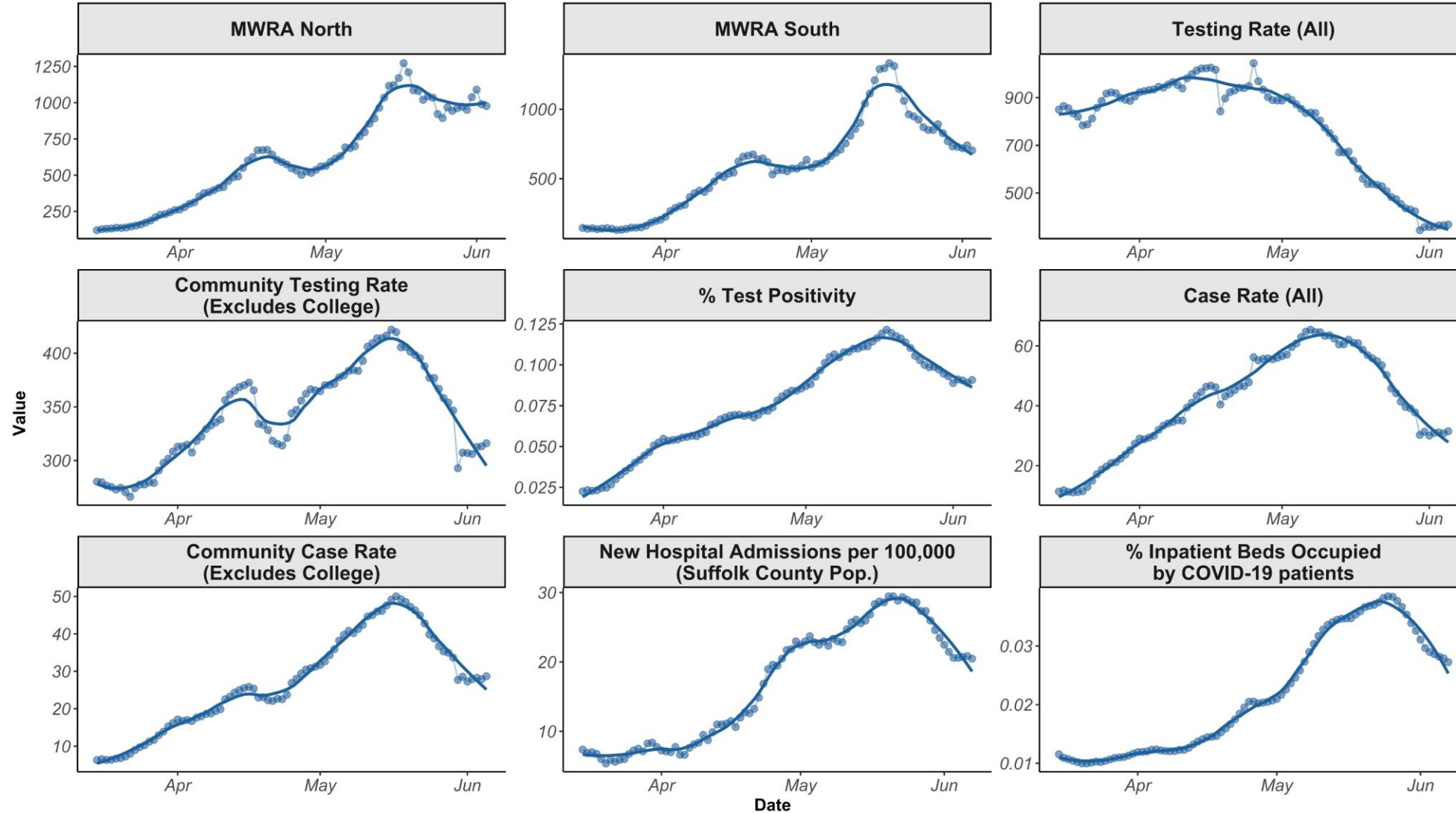


31.5 cases per 100,000	Data through: 05-June-2022
7-day trend Stable	-9.4% over the past 7 days
14-day trend Decreasing	-44.3% over the past 14 days

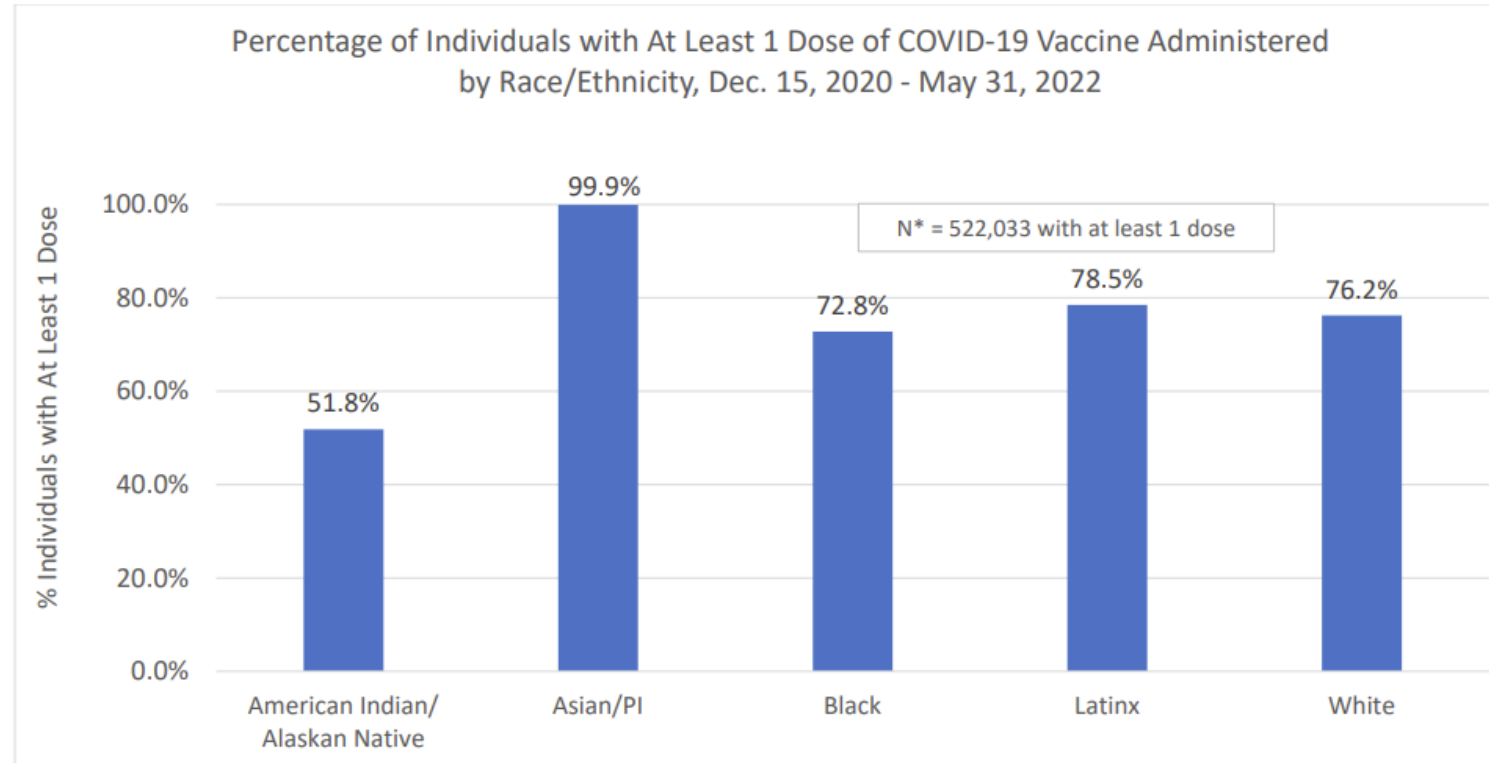


164 hospital adm.	Data through: 07-June-2022
7-day trend Decreasing	-11.3% over the past 7 days
14-day trend Decreasing	-34.2% over the past 14 days

COVID-19 Update



COVID-19 Update



Asian/PI = Asian, Native Hawaiian, and Pacific Islander

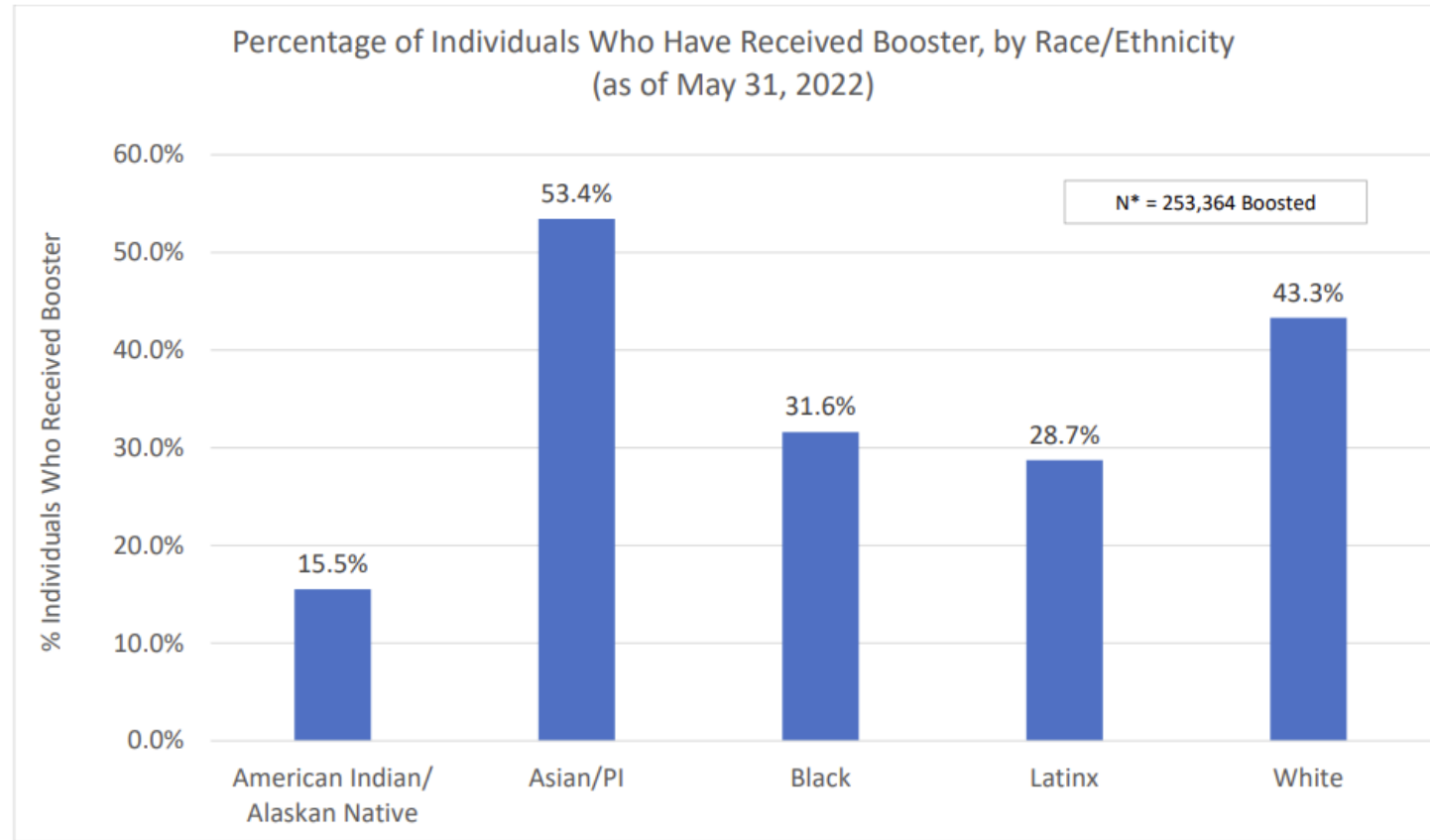
* Varies from Total N of Individuals with At Least 1 Dose (593,658) because data for residents who identify as Multiracial, Other, or Unknown are not included in this chart due to lack of comparable population data.

Percentage of overall Boston population with at least 1 dose = 87.4%.

In accordance with CDC practices, BPHC has capped the percent of population coverage metrics at 99.9%. These metrics could be greater than 99.9% for multiple reasons, including census denominator data not including all individuals that currently reside in the county (e.g., part time residents) or potential data reporting errors. Estimates may change as new data are made available.

Data Sources: Massachusetts Department of Public Health, Massachusetts Immunization Information System; U.S. Census Bureau, American Community Survey, 2018 5-yr estimates (2014-2018)

COVID-19 Update



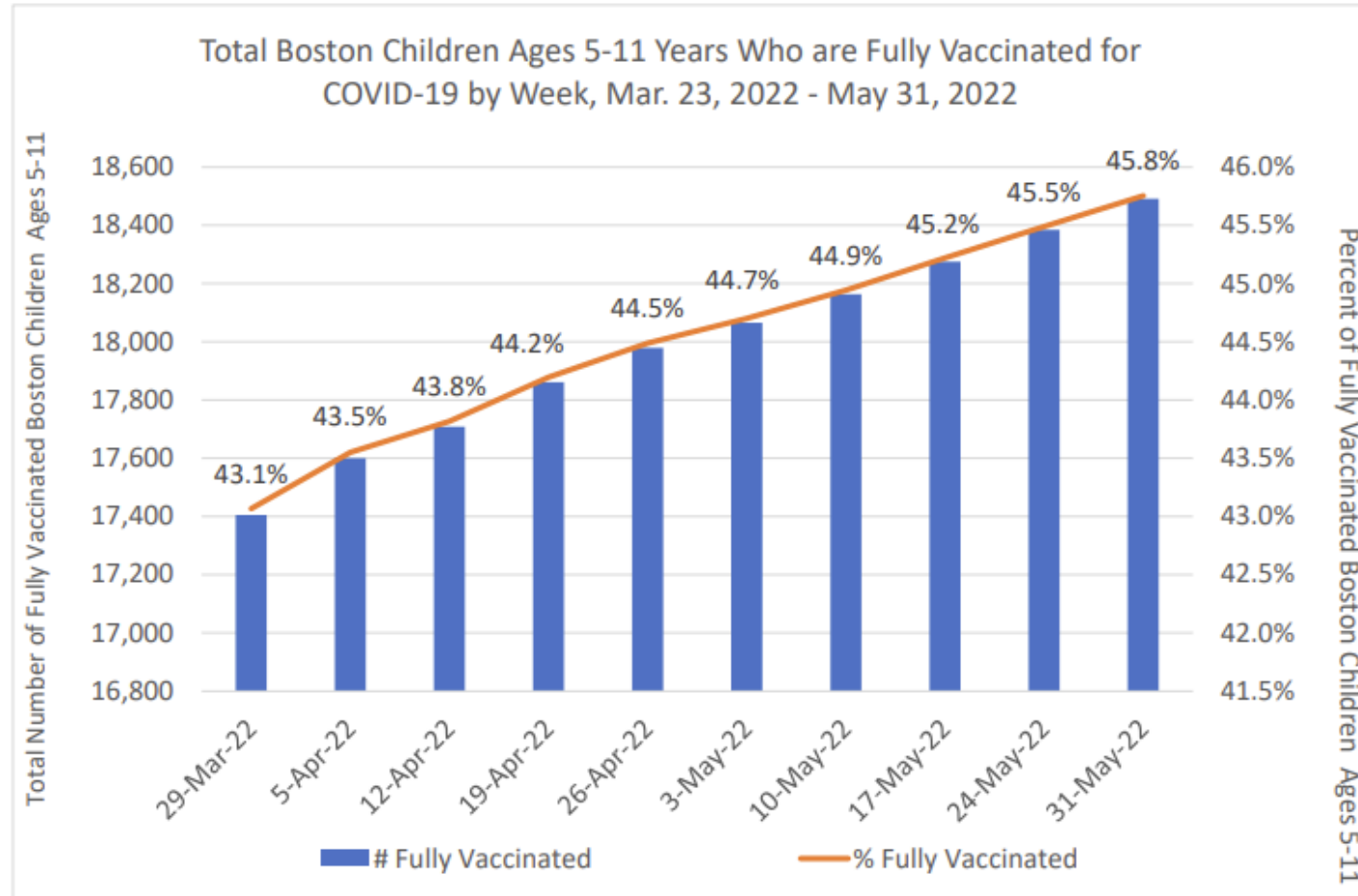
Asian/PI = Asian, Native Hawaiian, and Pacific Islander

* Varies from Total N of boosted Individuals (273,789) because data for residents who identify as Multiracial, Other, or Unknown are not included in this chart due to lack of comparable population data.

Percentage of overall Boston population boosted = 40.3%.

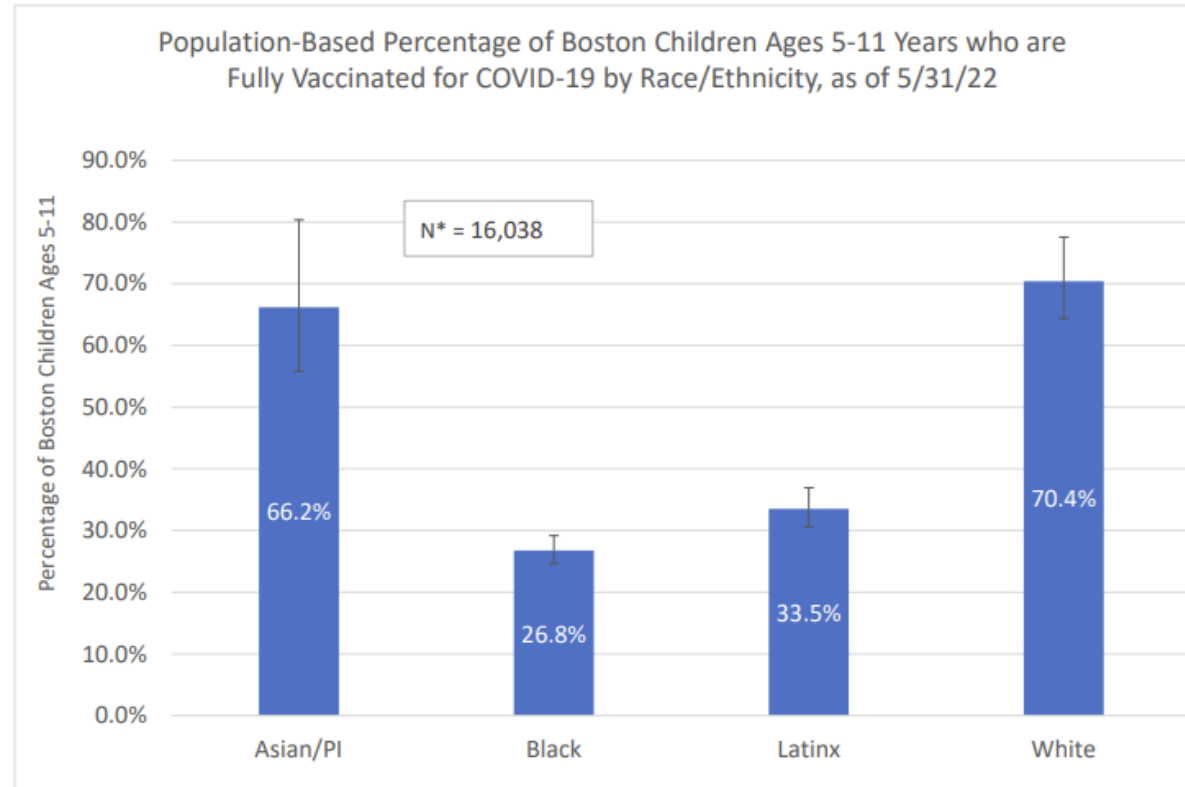
Data Sources: Massachusetts Department of Public Health, Massachusetts Immunization Information System; U.S. Census Bureau, American Community Survey, 2018 5-yr estimates (2014-2018)

COVID-19 Update



Data Sources: Massachusetts Department of Public Health, Massachusetts Immunization Information System; U.S. Census Bureau, American Community Survey, 2018 5-yr estimates (2014-2018).

COVID-19 Update



* Total number of Boston children who are fully vaccinated (5-11 years old) is 18,491 as of 5/31/2022; population-based percentages for children of other racial/ethnic groups (n=2,453) are not included in this chart due to unavailable comparable population data.

Asian/PI = Asian, Native Hawaiian, and Pacific Islander.

NOTE: Population estimates for the specified age group of children ages 5-11 are not available by race/ethnicity. Therefore, the population size of children ages 5-11 in each racial/ethnic group was approximated as follows: population estimate of children ages 5-10 + 40% of the population estimate of children ages 10-14.

Data Source: Massachusetts Department of Public Health, Massachusetts Immunization Information System; U.S. Census Bureau, American Community Survey, 2018 5-yr estimates (2014-2018).

COVID-19 Update



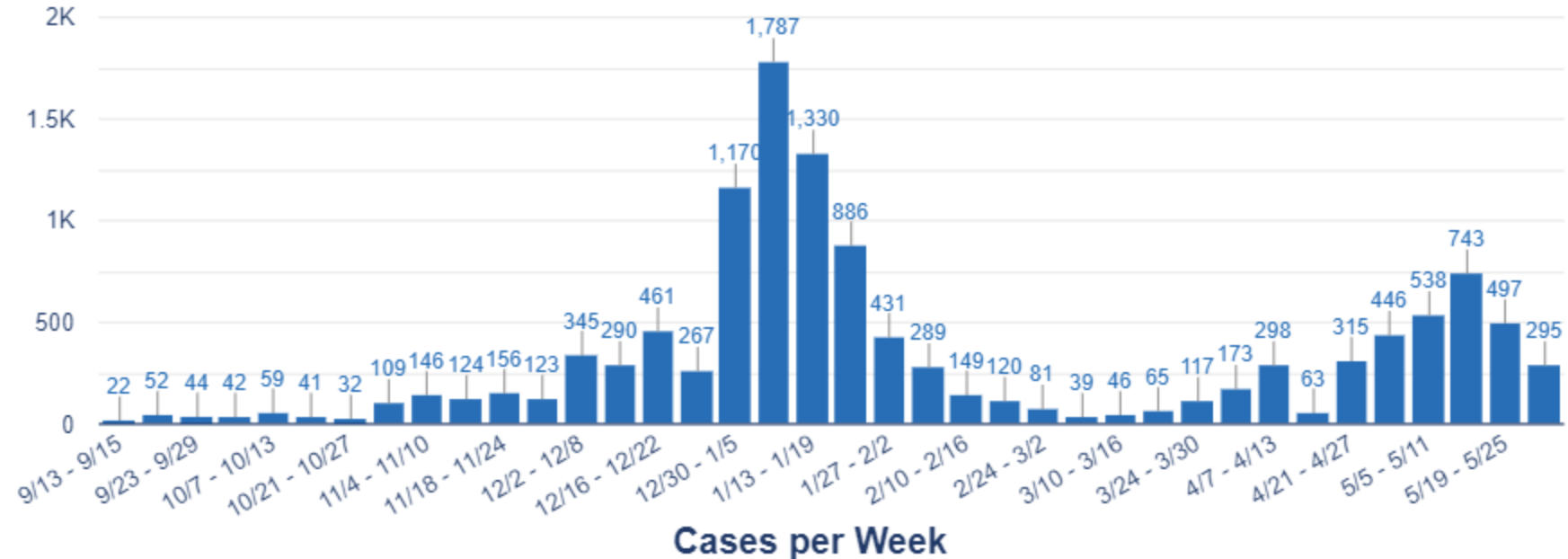
COVID-19 Cases (SY21-22)

Boston Public Schools is committed to reporting a weekly update on confirmed positive COVID-19 cases in our schools. This information reports the combined number of confirmed positive cases for students and staff.

Positive Cases Year to Date
12,191

Students
8,931

Staff
3,260



Unsheltered Homelessness and Substance Use Disorder Update

Unsheltered Homelessness and Substance Use Disorder Update

WARM WEATHER PLAN:

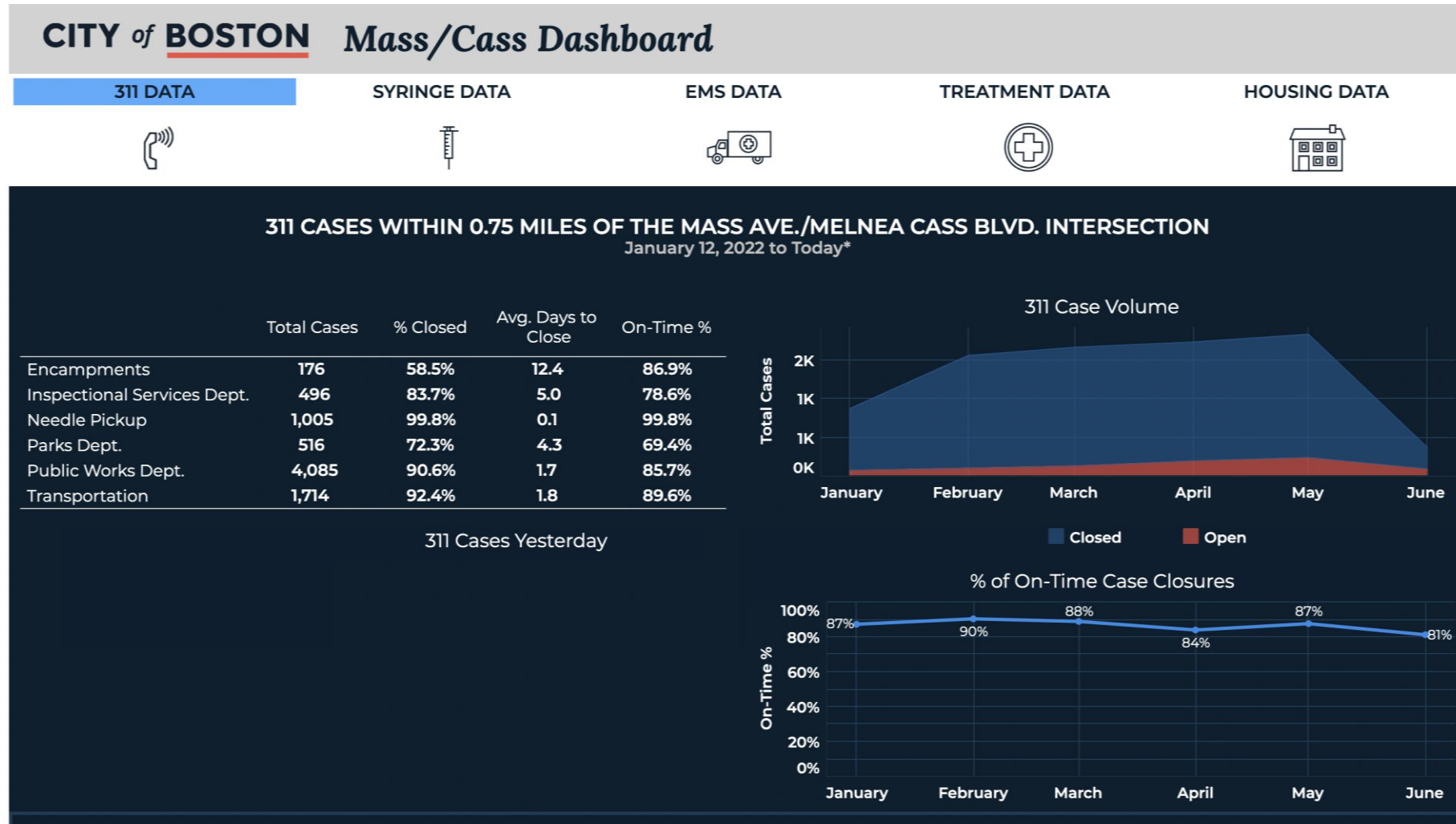
- 1 Promote public safety through the Boston Police Department and Boston Public Health Commission Public Safety
- 2 Increase presence of joint public health and public safety outreach teams
- 3 Prevent encampments
- 4 Increase street cleaning
- 5 Promote safe environment for accessing services at Engagement Center
- 6 Increase parking enforcement
- 7 Make the neighborhood more beautiful and more walkable
- 8 Increase outreach
- 9 Open new day centers outside of the neighborhood
- 10 Provide transportation and referrals to day centers outside of the neighborhood
- 11 Strengthen supportive services at low-threshold shelter and housing sites

Unsheltered Homelessness and Substance Use Disorder Update

BPHC ROLES:

- Promote public safety through daily collaboration between BPHC Public Safety and law enforcement
- Increased joint public health and public safety outreach teams to help individuals transition off streets, access services and transportation
- With new investment, staff Citywide Encampment Response and Service Engagement (CERVE) team to prevent encampments citywide
- Enhance safety procedures at Engagement Center, ensuring continuity of critical services
- Increased outreach to allow homelessness and harm reduction services through investment to fund six additional outreach workers, allowing coverage of overnight hours
- Support community-based providers to open new day engagement centers to expand geographic availability of services
- Pilot transportation to day centers in other areas of Boston, improving access to services and linkages to care through warm hand-offs
- Enhance medical care and housing navigation at new low-threshold sites, including primary care, behavioral health, and housing navigators

Unsheltered Homelessness and Substance Use Disorder Update





Discussion

