



Style 1



Style 2



Style 3



Style 4

## ***Tree Guards in Beacon Hill***

The installation of tree guards is beneficial because they help protect trees from vehicle impacts, dog urine and soil compaction.

### **DESIGN**

- Choose one of the suggested tree guard styles or similar.
- Use wrought iron painted black.
- Style 1 is preferred for strength and lower height for easy access.
- Always include a bolted removable panel on the street side
- Raised brick tree pit surrounds are discouraged as they interrupt the flow of rain water into the tree pit and require extra maintenance.

### **PERMITS**

- Submit drawings to Beacon Hill Architectural Commission for approval.
- Contact (617)635-3850 or [BeaconHillAC@boston.gov](mailto:BeaconHillAC@boston.gov).

### **MAINTENANCE**

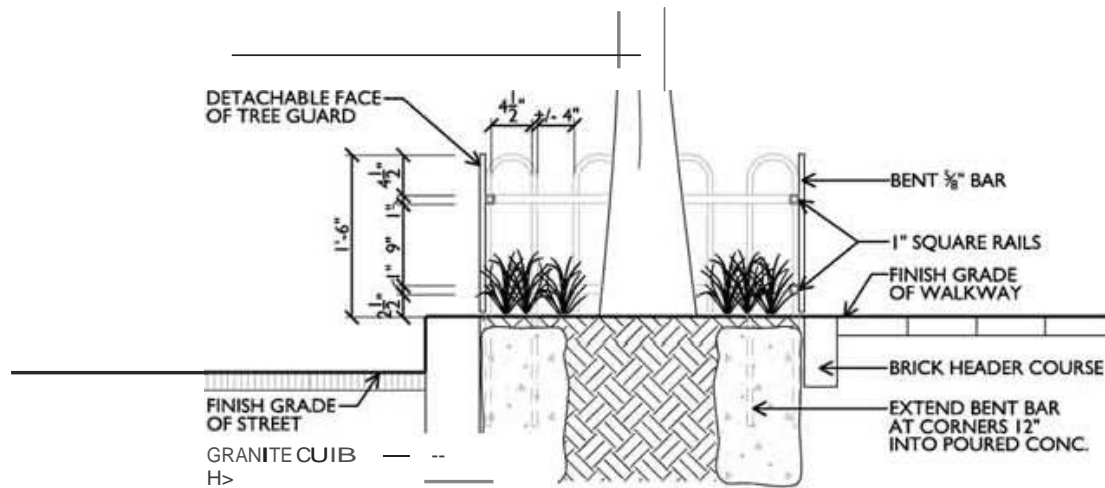
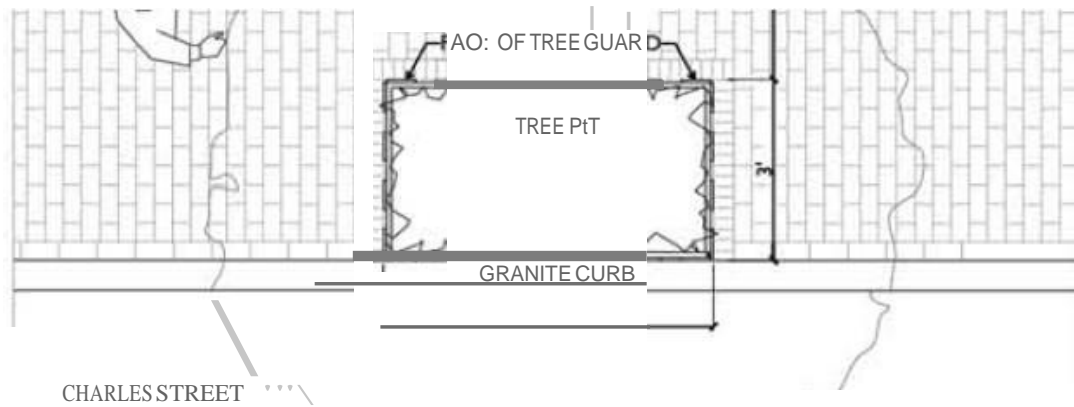
- Boston Parks and Recreation Department does not install or maintain tree guards.
- Beacon Hill neighbors are responsible for cost of installation and maintenance.

*If you need additional information, please contact the BHCA at [www.bhcivic.org](http://www.bhcivic.org) or (617)227-1922*

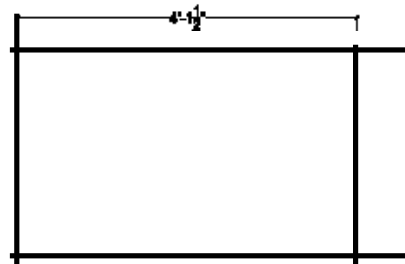
Sponsored by:  
BHCA Tree Committee  
74 Joy Street, Boston, MA 02114



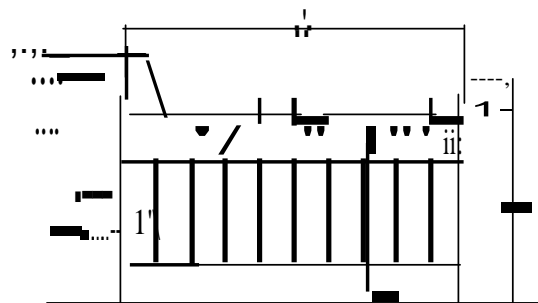
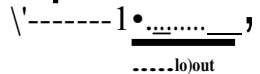
Beacon Hill Civic Association



Style 1



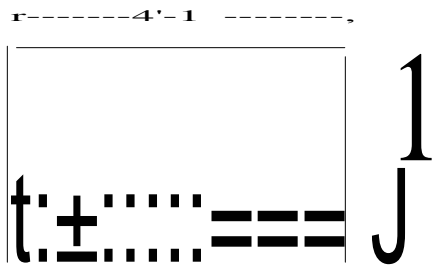
Plan view



Elevation, III: f11

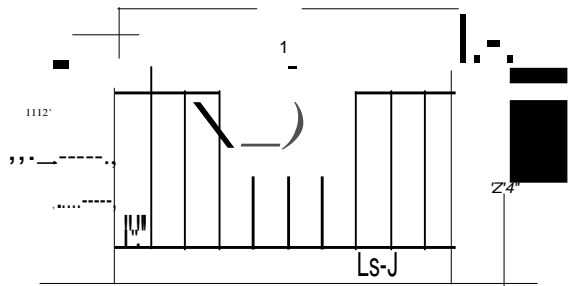
Style 2

Drawings are preliminary. Need to confirm final dimensions with your tree guard fabricator before submitting to the Beacon Hill Architectural Commission for approval.



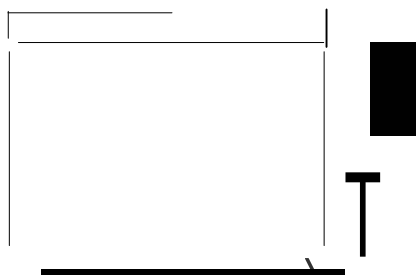
Plan view

Length and width may vary according to all layout



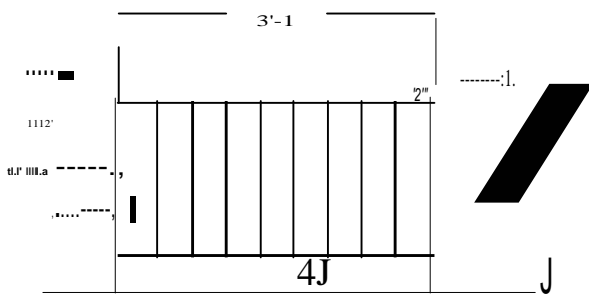
Elevation, Curve

**Style 3**



Plan View

Length and width may vary according to all layout



Elevation, Simple

**Style 4**

Drawings are preliminary. Need to confirm final dimensions with your tree guard fabricator before submitting to the Beacon Hill Architectural Commission for approval.

# ***Suggested Tree Guard Fabricators***

## **Creation Iron Design**

69 Norman St. #19R, Everett MA

1-617-387-0505

creationironworks@hotmail.com

www.creationirondesign.com

---

## **Somerville Ornamental Iron Work Inc.**

11 George Street, Somerville, MA 02145

1-800-894-8668

somorn07@aol.com

www.somervilleiron.com

---

## **Wovensteel Inc**

336 Border Street, East Boston, MA 02128

1-617-567-5166

wovensteel@rcn.com

www.wovensteel.net