

COSENTINO

EXTERIOR SIGNAGE SUBMISSION



COSENTINO

36 THOMSON PLACE

marguliesperruzzi

DESIGN REVIEW AGENDA

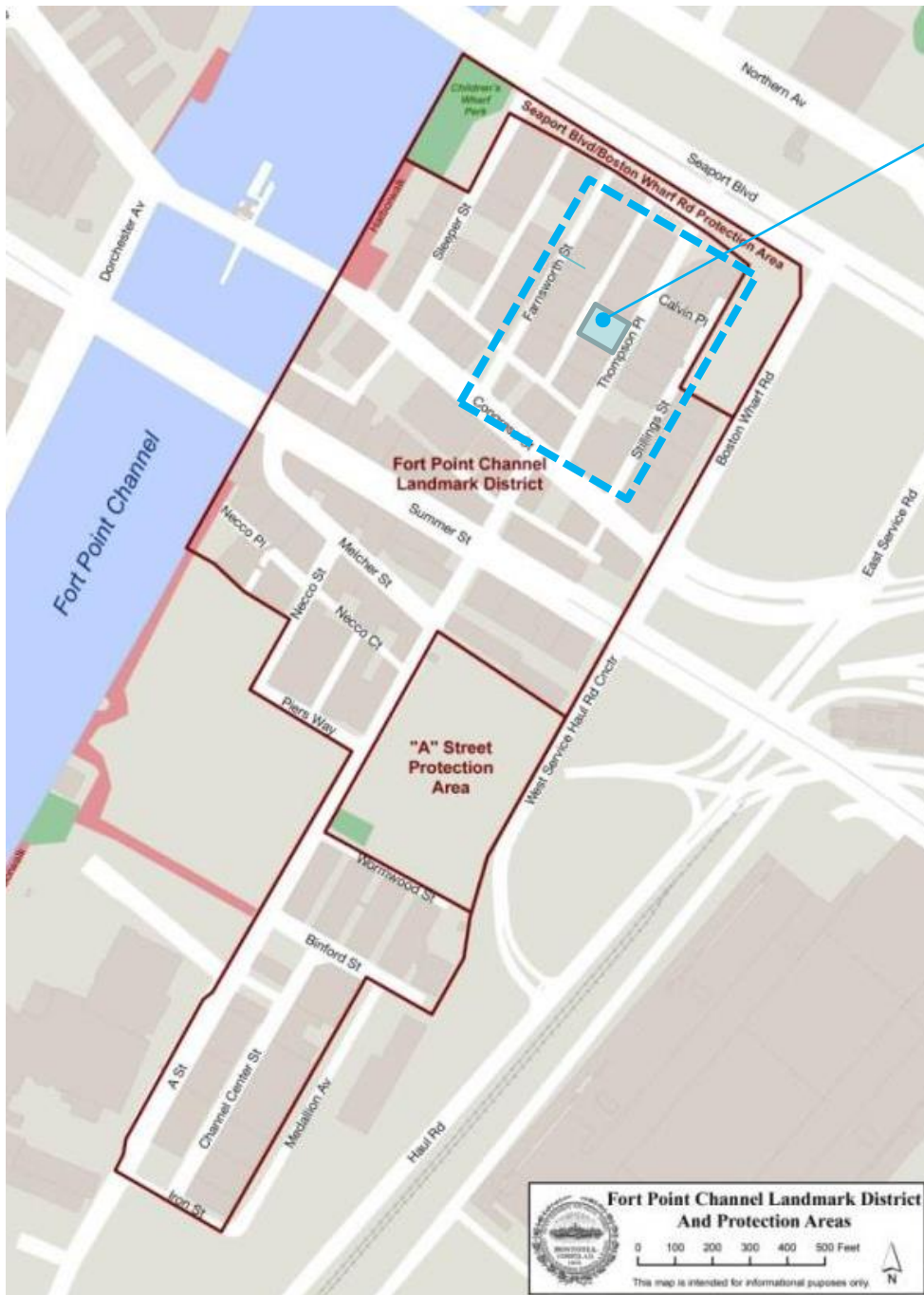
LOCATION OF BUILDING WITHIN DISTRICT

EXISTING PHOTOS

NEIGHBORHOOD REFERENCE PHOTOS

SIGNAGE ELEMENTS

- REVISED DESIGN LAYOUT
- REVISED SIGNAGE DETAILS



36 THOMSON PLACE



FORT POINT CHANNEL LANDMARK DISTRICT

PROJECT LOCATION MAPS

COSENTINO

marguliesperruzzi

1.18.2023



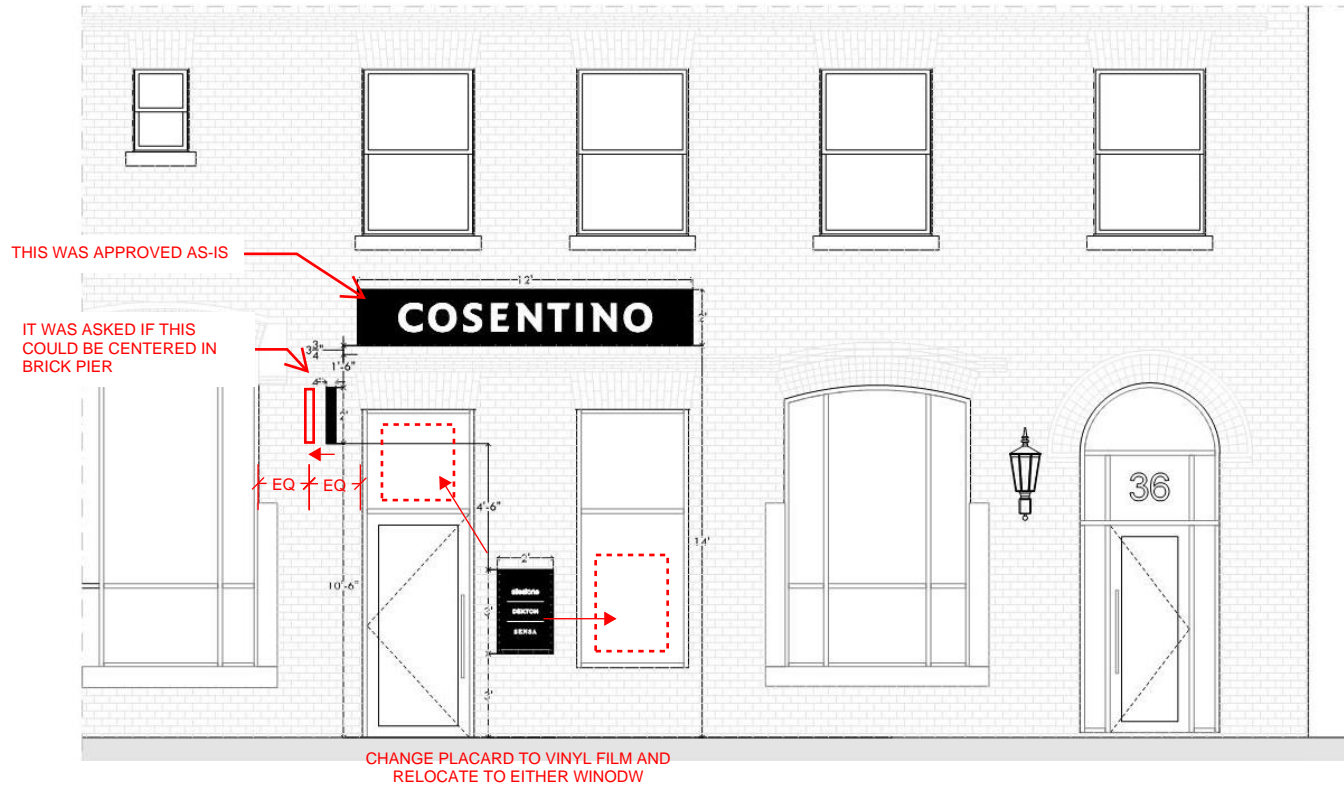
EXISTING CONDITION PHOTO

FRONT OF 36 THOMSON PLACE – VIEW FROM ACROSS STREET

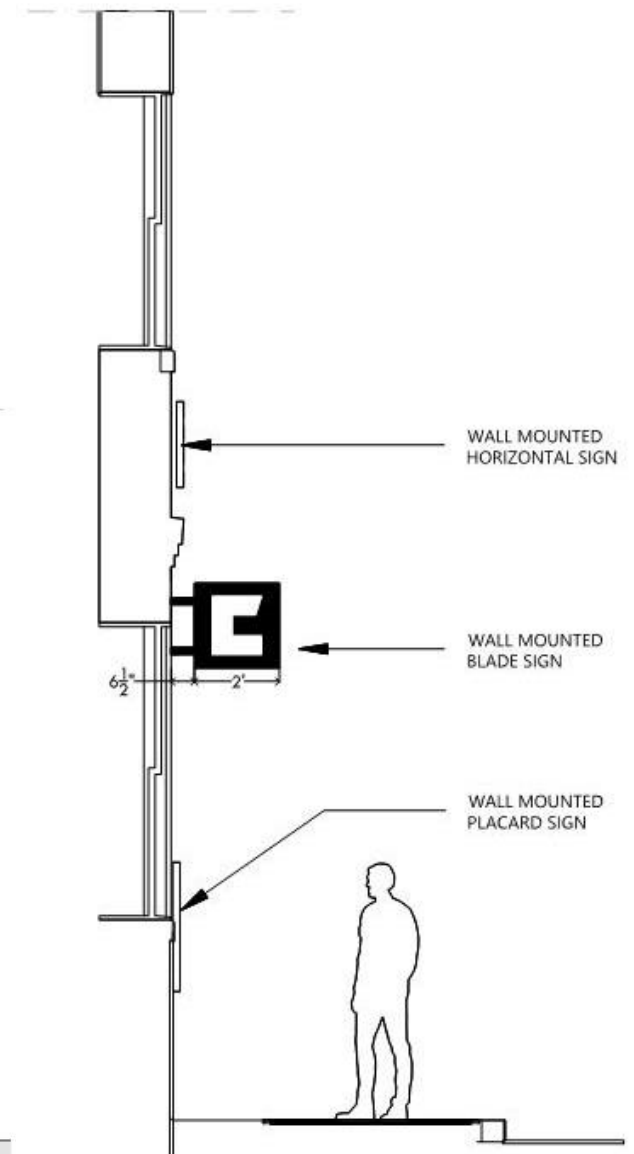


EXISTING CONDITION PHOTO

FRONT OF 36 THOMSON PLACE – ENLARGED VIEW



ORIGINAL SIGNAGE PROPOSAL WITH FPLDC COMMENTS



PROPOSED SIGNAGE CONFIGURATION

COSENTINO



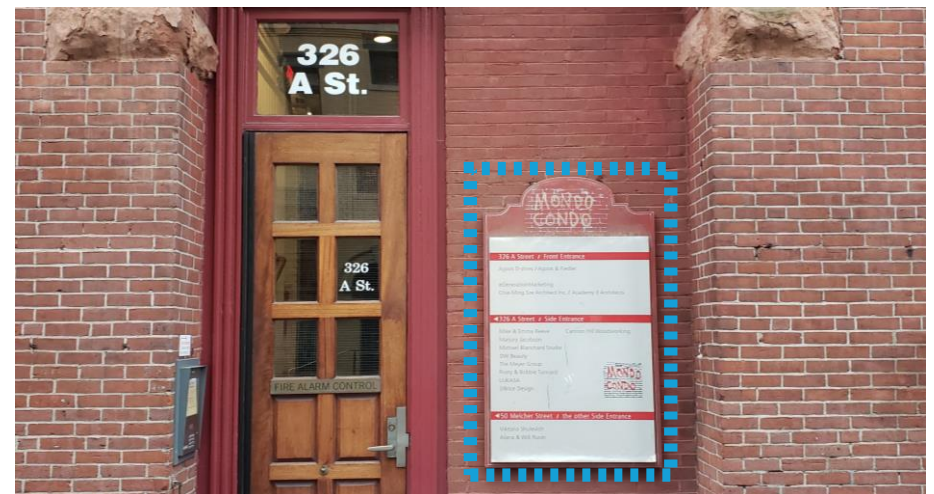
44 FARNSWORTH ST
31" W x 21" H



46 FARNSWORTH ST
24" W x 16" H



55 THOMSON PL
64" W x 44" H



326 A ST
33.5" W x 60" H

NEIGHBORHOOD REFERENCE PHOTOS



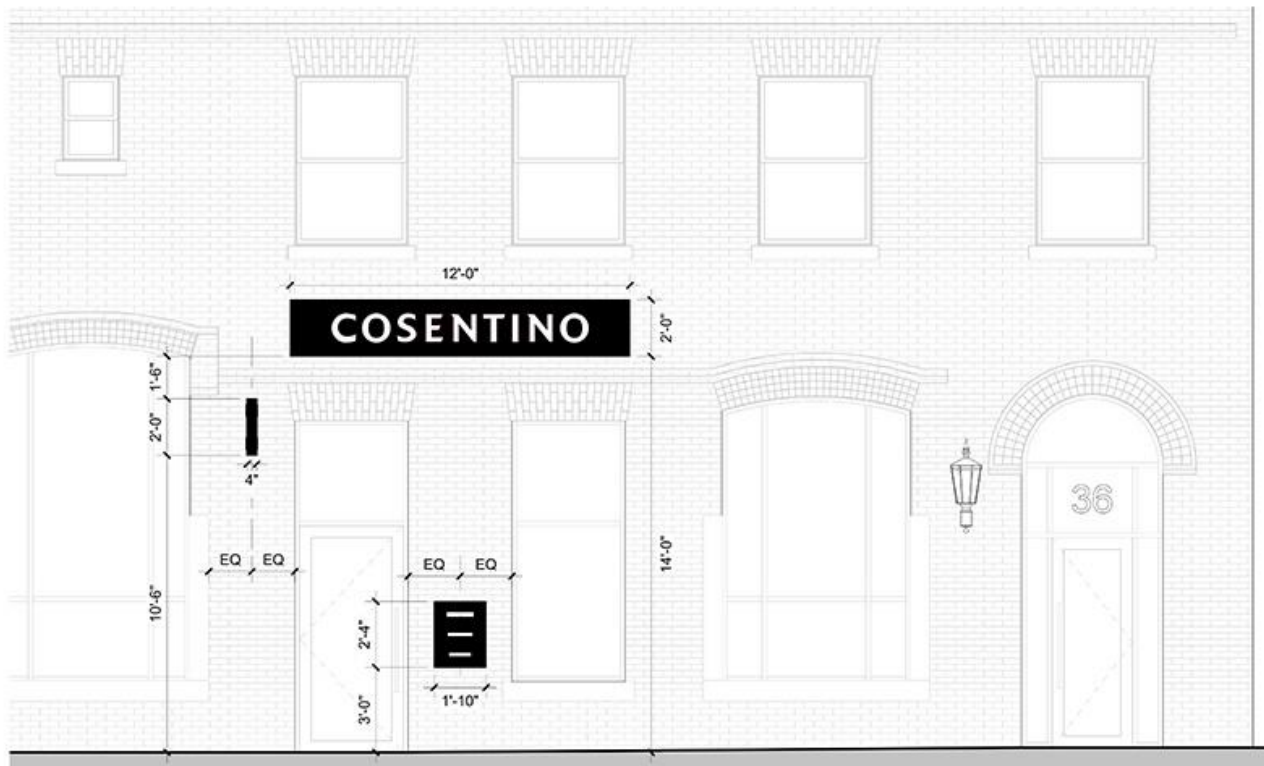
CONCEPTUAL RENDERING

PROPOSED SIGNAGE - THOMSON PLACE VIEW

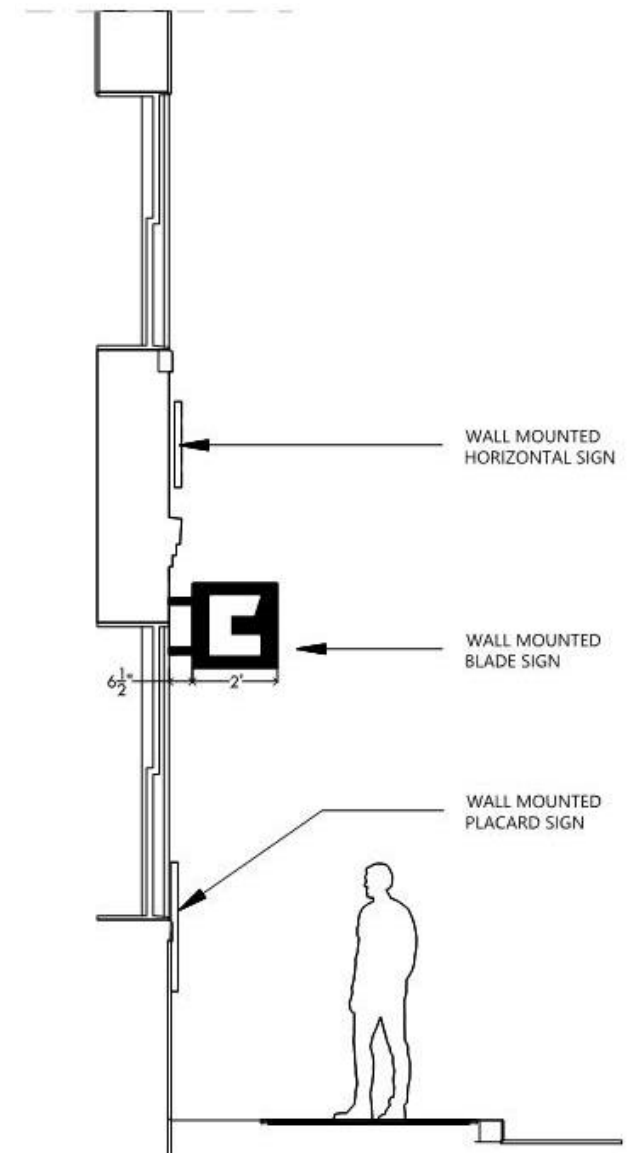
COSENTINO

marguliesperruzzi

1.18.2023



PROPOSED DESIGN LAYOUT



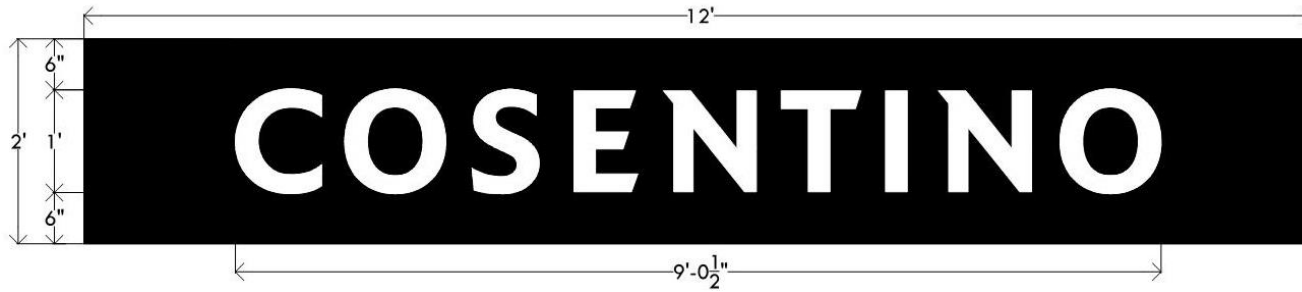
PROPOSED SIGNAGE CONFIGURATION

COSENTINO

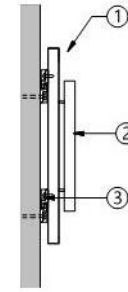
marguliesperruzzi

1.18.2023

WALL MOUNTED HORIZONTAL SIGN



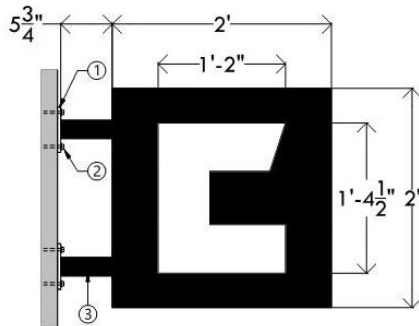
ELEVATION VIEW



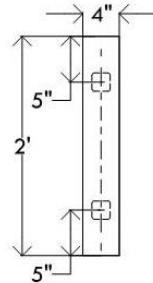
SECTION VIEW

- ① 1" Painted Wood Panel.
- ② 6" Border to edge around text, TYP for all sides.
- ③ Z-clip wall attachment. Non-corrosive 1/4" - 20 thru-bolts with fender washers & nuts. Mount into existing mortar joints. Mounting hardware may vary to suit wall conditions.

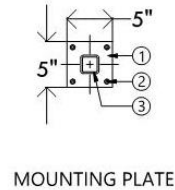
WALL MOUNTED BLADE SIGN



ELEVATION VIEW



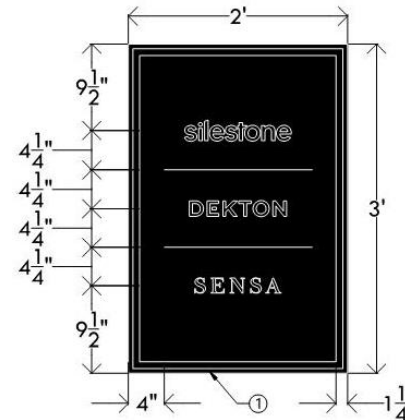
SECTION VIEW



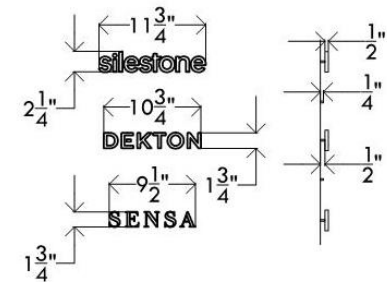
MOUNTING PLATE

- ① 3/8"x 5"x 5" aluminum mounting plate. PTM Matthews brushed aluminum.
- ② Non-corrosive 1/4" - 20 thru-bolts with fender washers & nuts. Mount into existing mortar joints. Mounting hardware may vary to suit wall conditions.
- ③ 2" radius corner square aluminum PTM Matthews brushed aluminum.

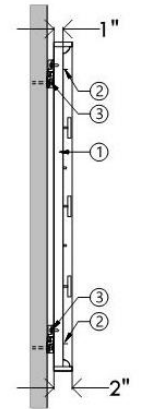
WALL MOUNTED PLACARD SIGN



ELEVATION VIEW



LETTER DIMENSIONS



SECTION VIEW

- ① 2" Painted Wood Panel.
- ② 4" Border to edge around text, TYP for all sides.
- ③ Z-clip wall attachment. Non-corrosive 1/4" - 20 thru-bolts with fender washers & nuts. Mount into existing mortar joints. Mounting hardware may vary to suit wall conditions.

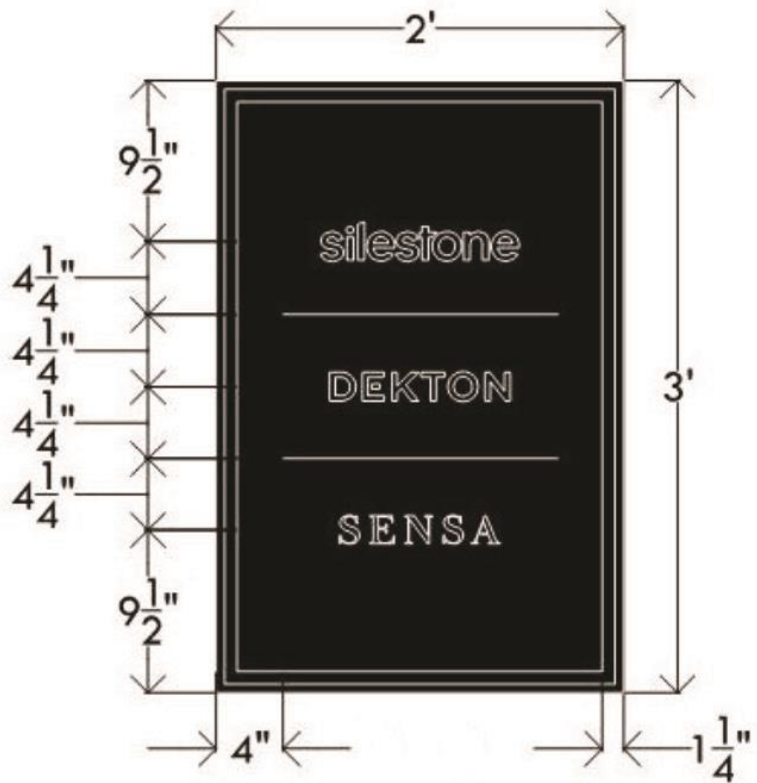
* ALL SIGNS TO LOCATE FASTENERS WITHIN MORTAR JOINTS

PROPOSED SIGNAGE DETAILS

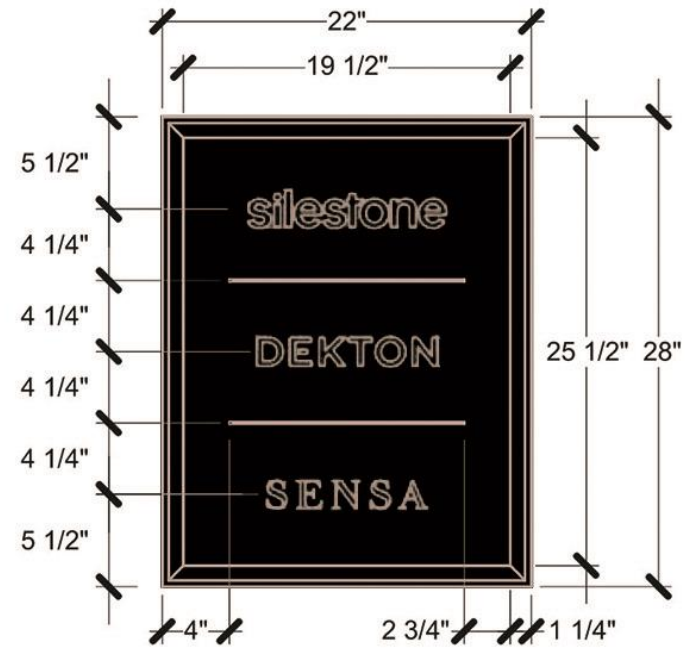
COSENTINO

marguliesperruzzi

1.18.2023



PROPOSED



REVISED

PROPOSED SIGNAGE DETAILS – REVISED WALL PLACARD



COSENTINO

marguliesperruzzi