

I am asking for approval to replace 24 windows at 7 Worcester Street in the South End. The current windows are falling apart, snow and ice accumulate in the winter and wind flows through them. The windows do not close or open smoothly. None of the current windows are original windows, they are currently vinyl double hung windows. I would like to replace these windows with aluminum thermal-break double hung windows in a bronze color. There are 21 windows that are 34 x 68.25 and 3 that are 25.25 X 68.5. The company is Crystal Window and Door Systems.

34 x 68.25

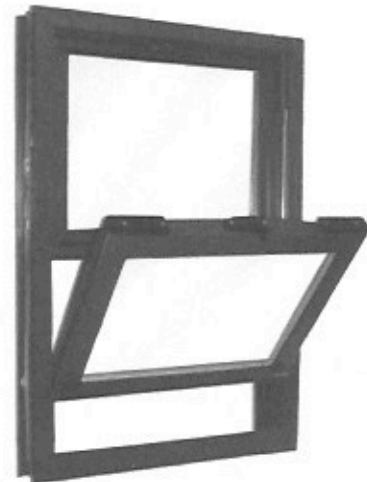
25.25  
68.5





**SERIES 2000A DOUBLE HUNG WINDOWS**

TEST SIZE W x H	AAMA RATING	AIR INFILTRATION	DESIGN PRESSURE	WATER RESISTANCE	U-VALUE	SHGC	VT
56" x 91"	CW-PG50	≤0.30 cfm/ft <sup>2</sup>	50 psf	7.5 psf	0.37-0.60	0.17-0.60	0.31-0.62



**TABLE OF CONTENT**

- INTRODUCTION -P1
- SECTION DETAILS -P2
- MULLION -P3-P4
- NAIL FIN -P5
- FACE FLANGE -P6-P7
- TRIPLE GLAZING -P7
- A/C ORIEL KIT -P8-P9

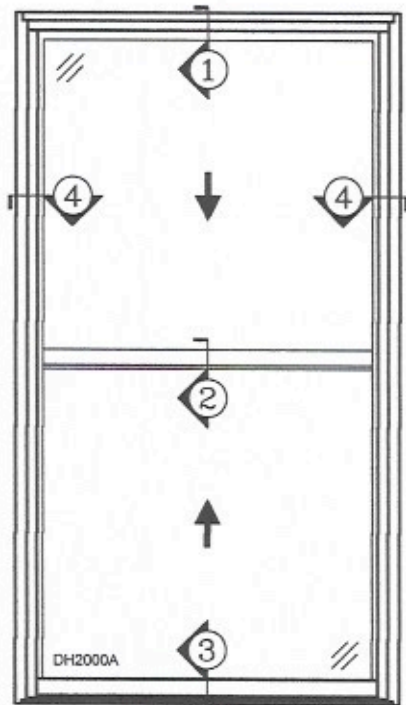
**FEATURES**

- ALUMINUM THERMAL-BREAK DOUBLE HUNG TILT WINDOW
- 3-1/4" FRAME DEPTH
- 7/8" DOUBLE PANE INSULATED GLASS
- AAMA 2604 POWDER COAT PAINT
- EQUAL SIGHTLINE DESIGN
- SLOPED SILL
- SILL WITH 1/2" EXTERIOR LEG
- TILT SASH WITH TILT LATCH
- CONTINUOUS LIFT HANDLE ON BOTTOM SASH
- ANTI-DRIFT HEAD CLIP LOCK
- MEETING RAIL LOCK
- SPIRAL BALANCES
- INSTALLATION SCREWS

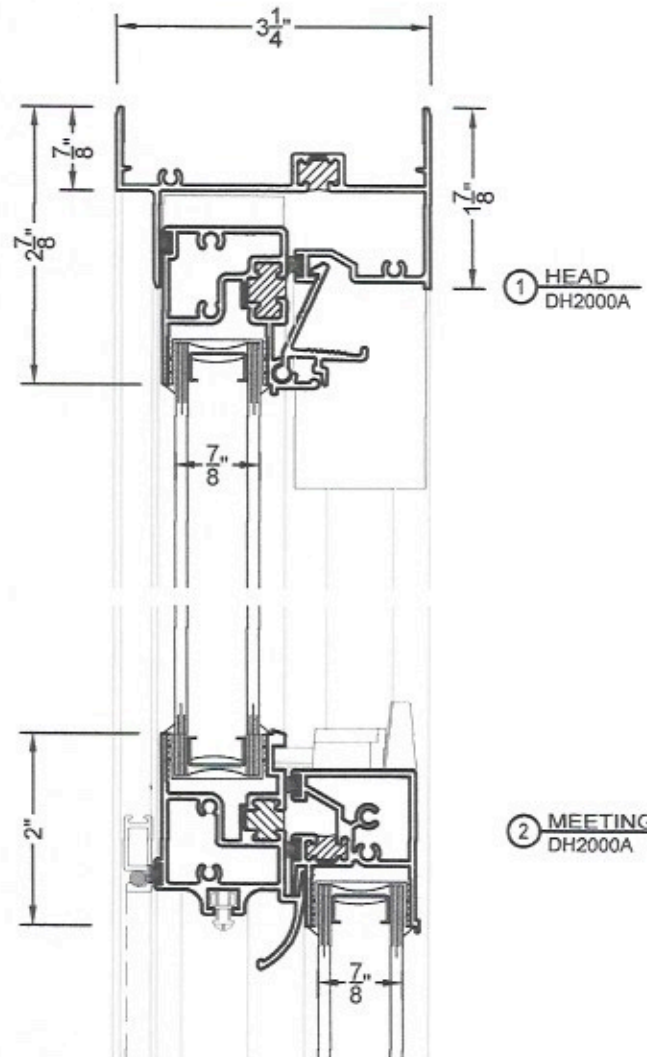
**OPTIONAL SELECTIONS**

- LOW-E COATING & ARGON FILLED IGU
- SILL WITH EQUAL LEG
- 1-1/4" NAILING FIN (1-1/8" SETBACK)
- FACE FLANGE WITH VARIOUS SIZE
- CUSTOM FINISH AND CUSTOM COLORS
- GRIDS
- BLOCK & TACKLE OR ULTRA LIFT BALANCES
- OTHER OPTIONAL ACCESSORIES
- A/C ORIEL KIT
- HALF OR FULL SCREEN
- SASH STOPS

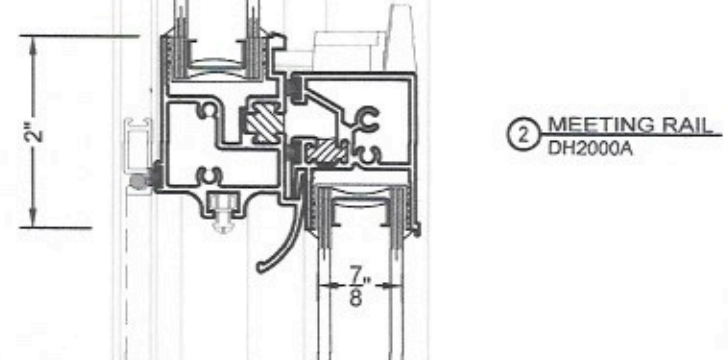
VER: 2020.03



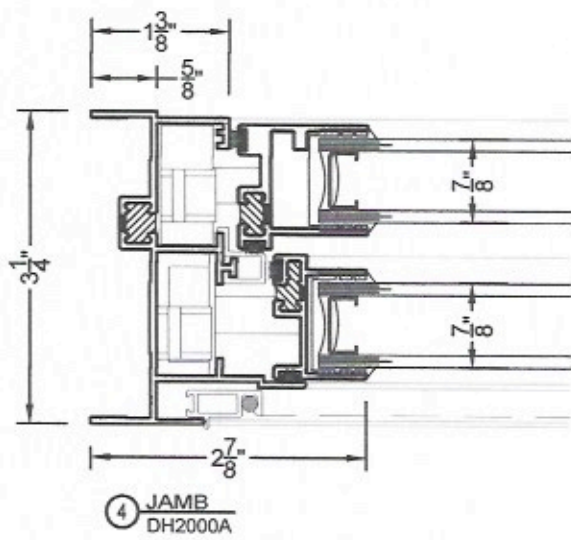
2000A DOUBLE HUNG



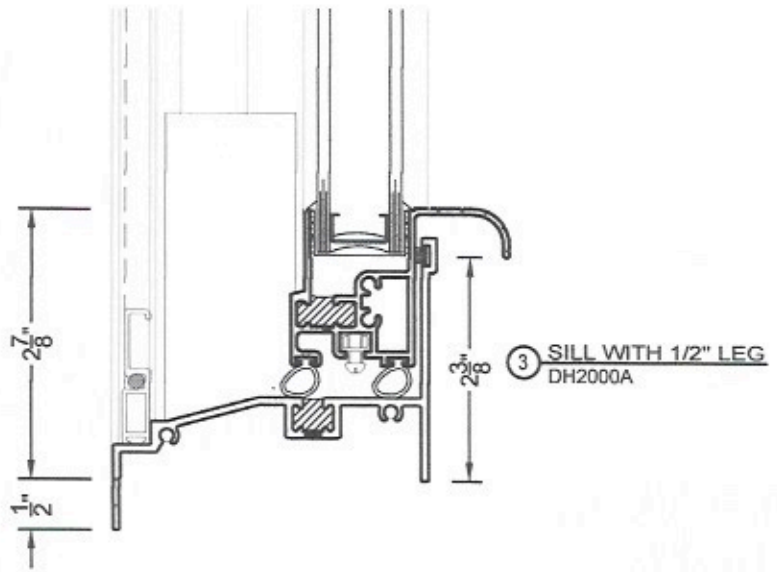
1 HEAD  
DH2000A



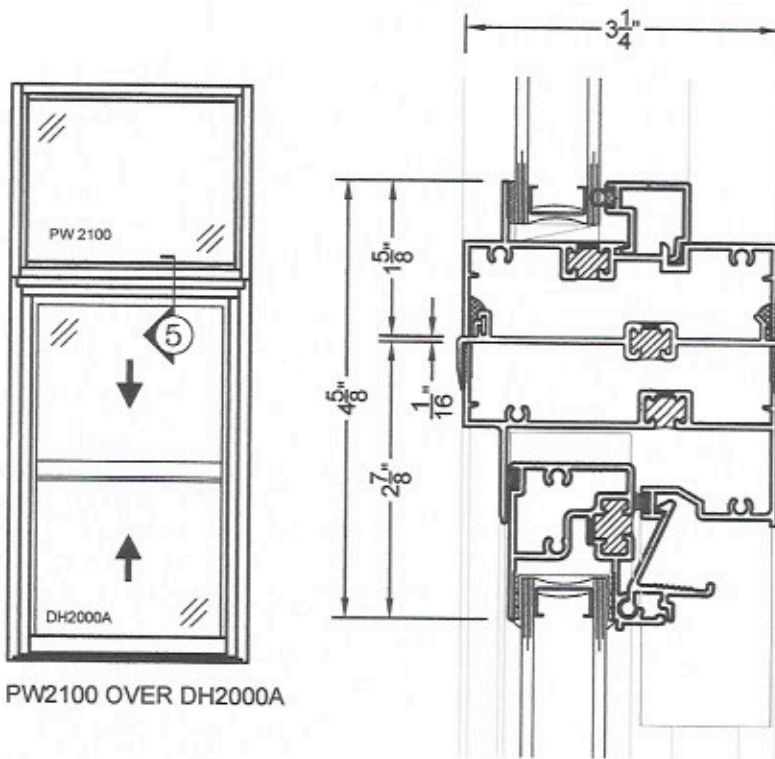
2 MEETING RAIL  
DH2000A



4 JAMB  
DH2000A

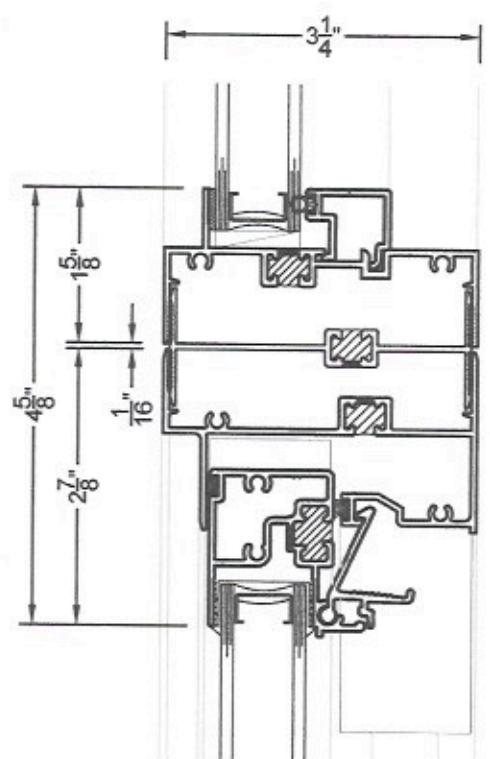


3 SILL WITH 1/2" LEG  
DH2000A

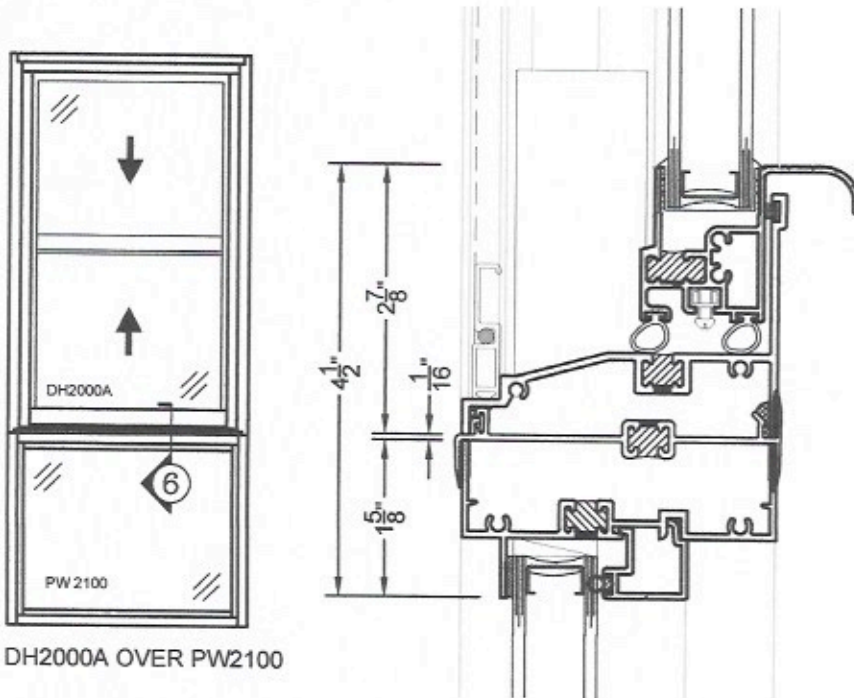


PW2100 OVER DH2000A

5 STACK MULLION  
PW2100 OVER DH2000A

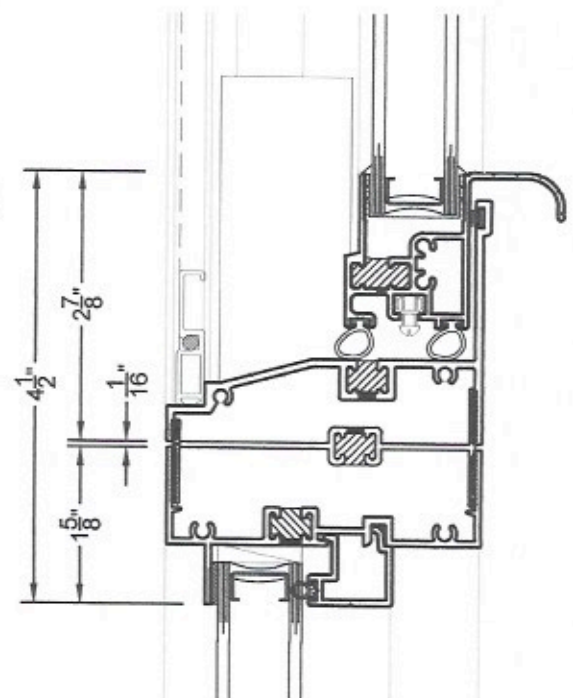


5A H MULLION  
PW2100 OVER DH2000A

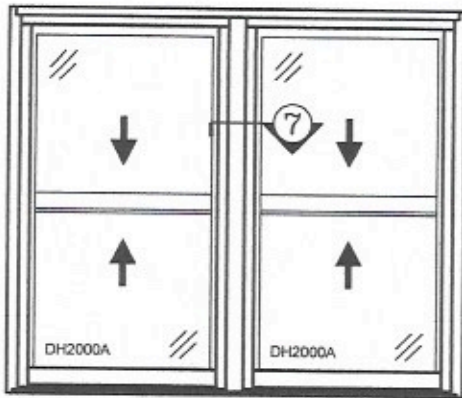


DH2000A OVER PW2100

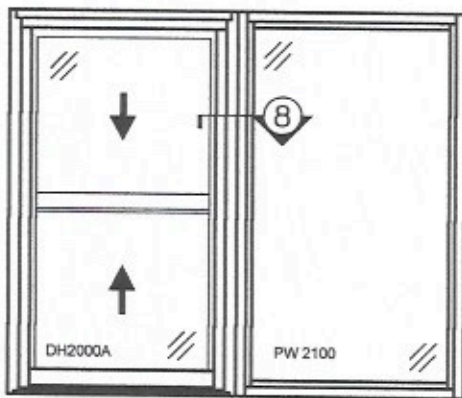
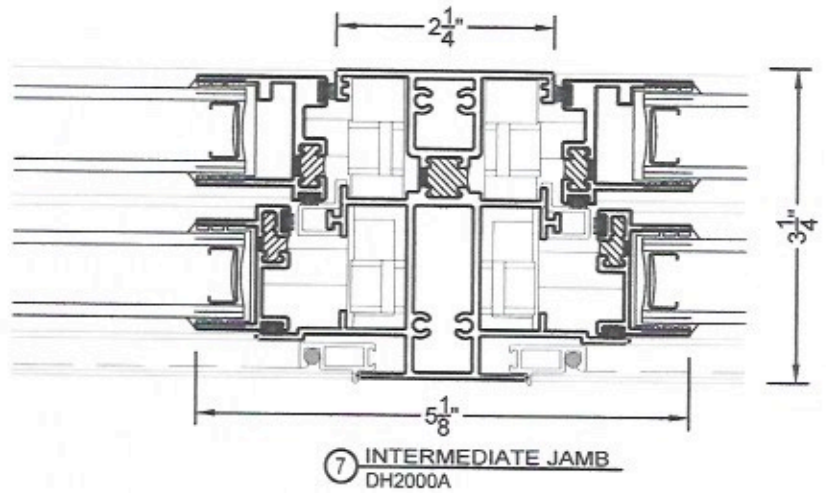
6 STACK MULLION  
DH2000A OVER PW2100



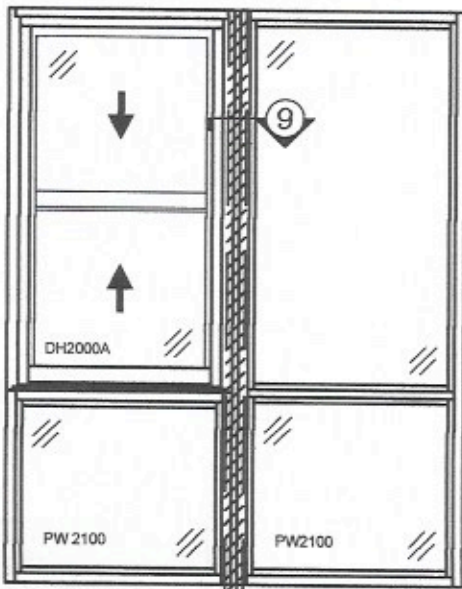
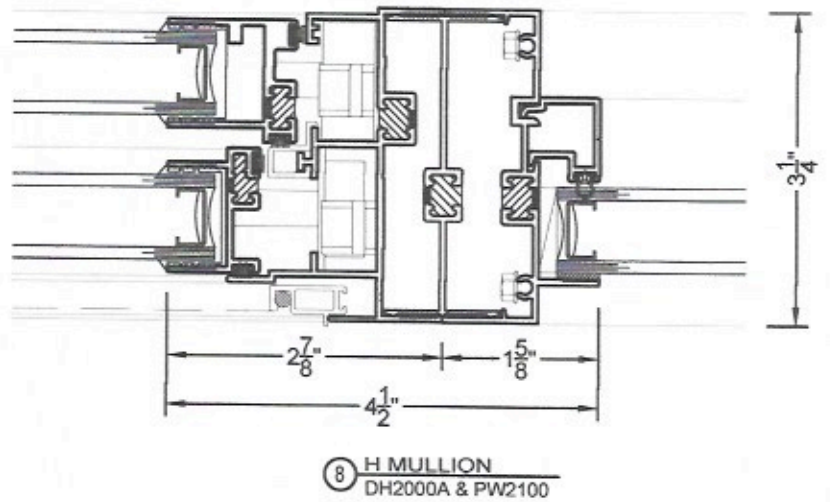
6A SHORT LEG H MULLION  
DH2000A OVER PW2100



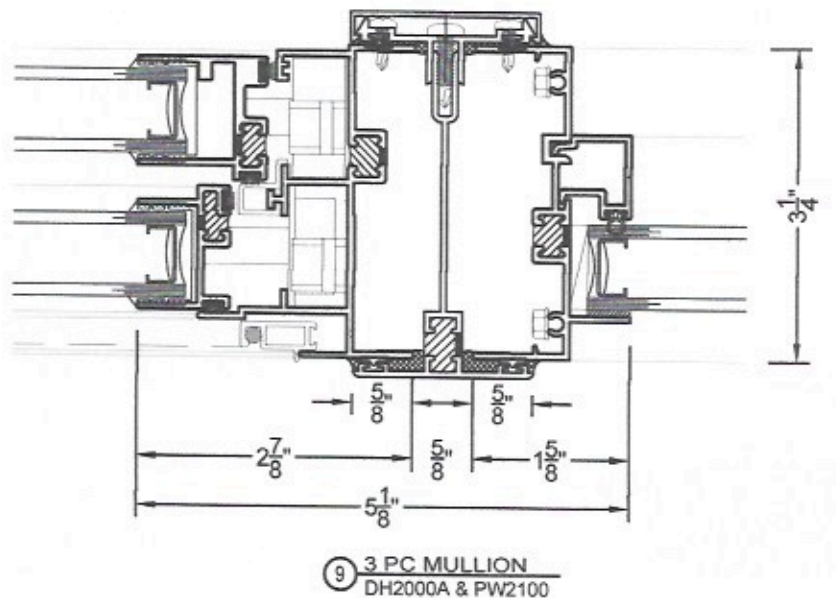
2000A TWIN DOUBLE HUNG

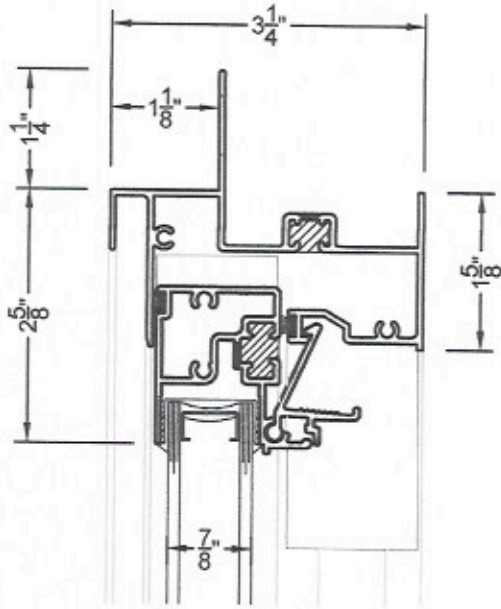


DH2000A & PW2100

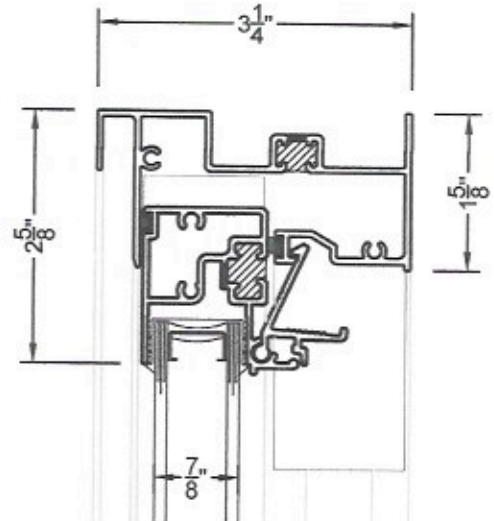


DH2000A OVER PW2100 &  
PW2100T W/ 3PC MULLION

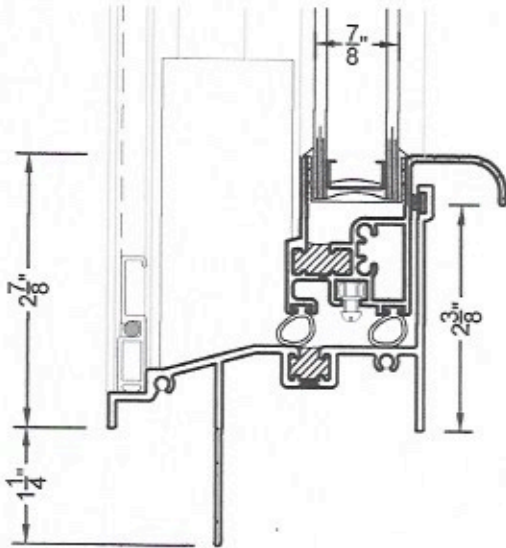




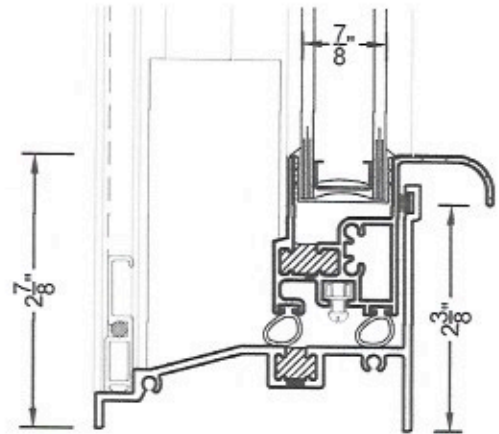
① **NAILING FIN HEAD**  
 DH2000A



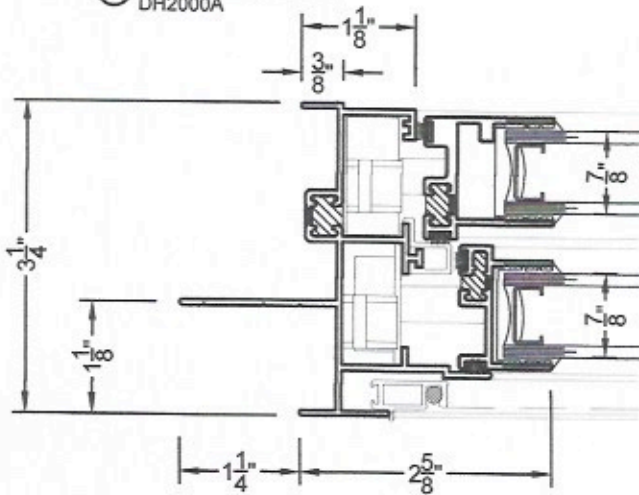
①A **NAILING FIN HEAD W/O FIN**  
 DH2000A



② **NAILING FIN SILL**  
 DH2000A



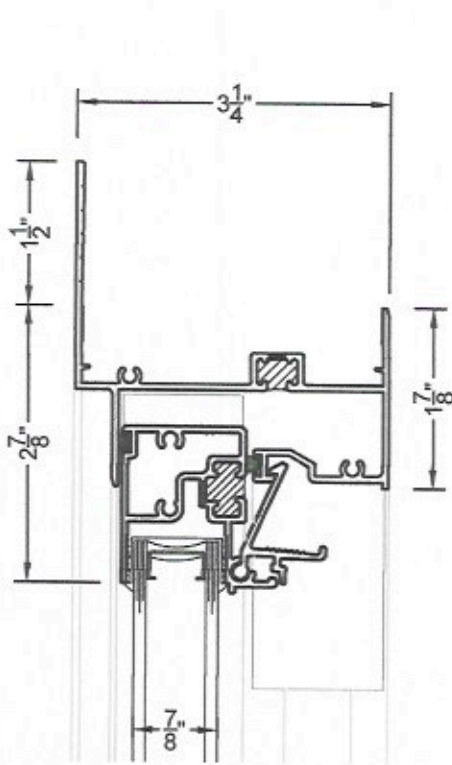
②A **SILL WITH EQUAL LEG**  
 DH2000A



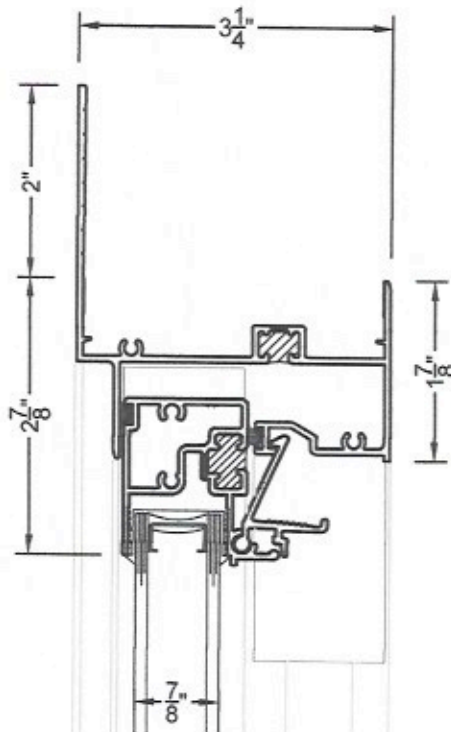
③ **NAILING FIN JAMB**  
 DH2000A

VER: 2020.03

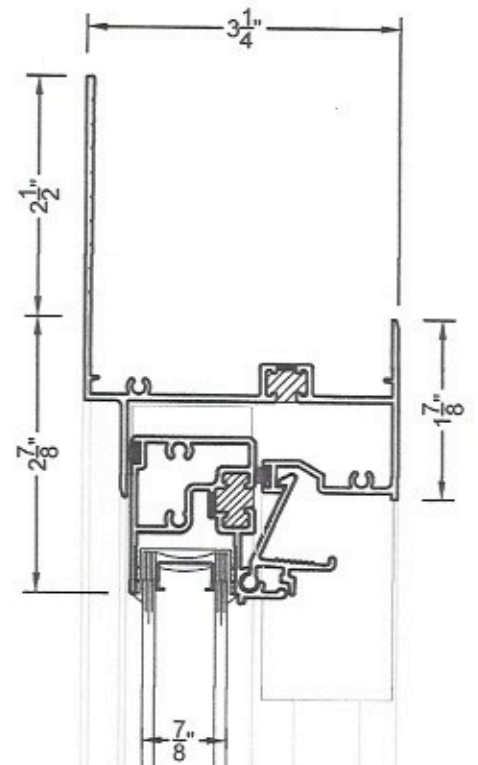




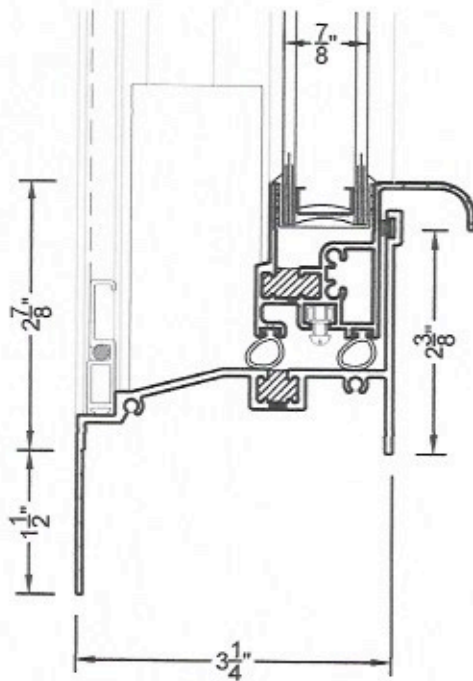
① 1-1/2" FLANGE HEAD  
DH2000A



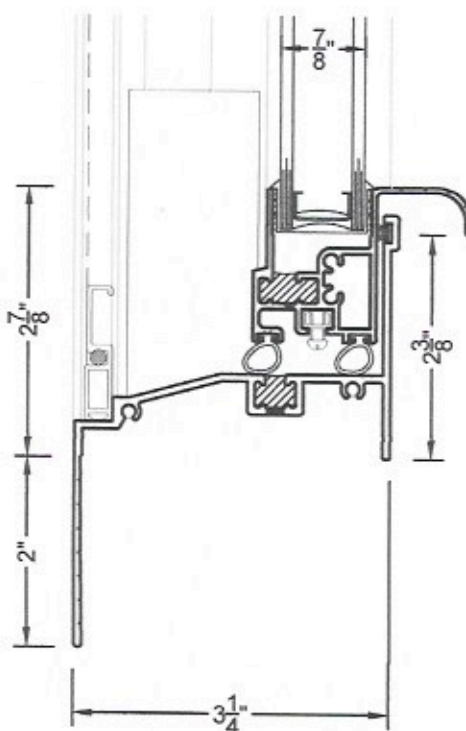
①A 2" FLANGE HEAD  
DH2000A



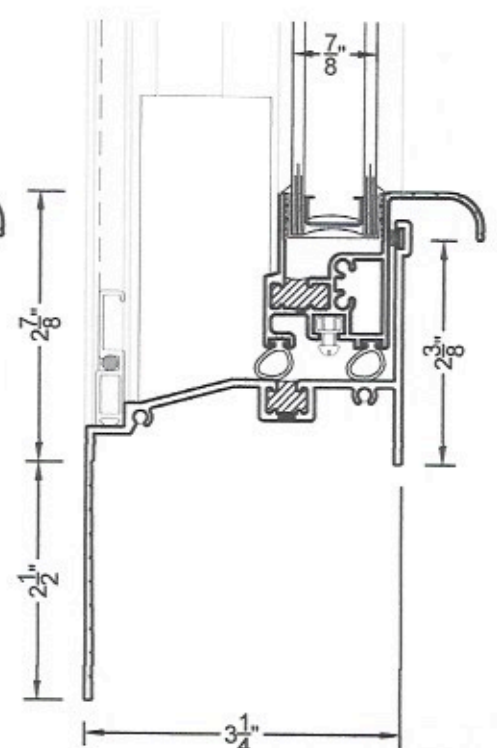
①B 2-1/2" FLANGE HEAD  
DH2000A



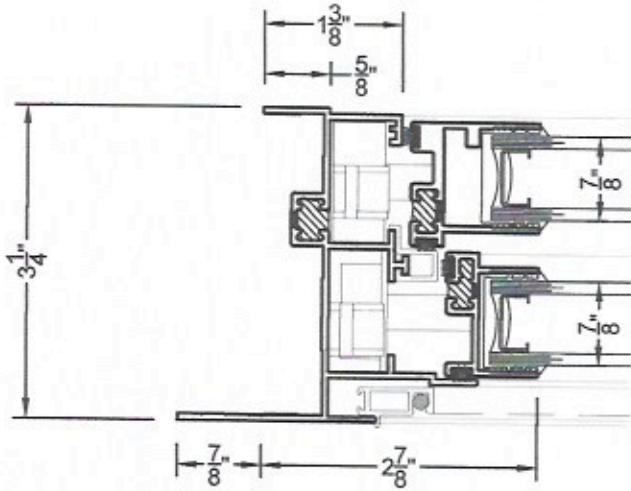
② 1-1/2" FLANGE SILL  
DH2000A



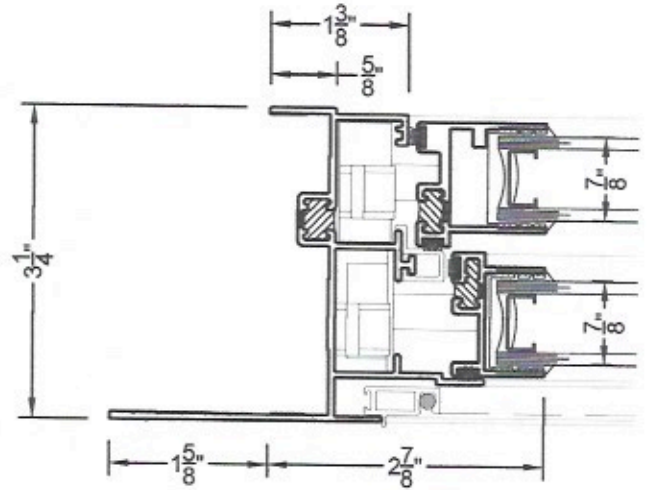
②A 2" FLANGE SILL  
DH2000A



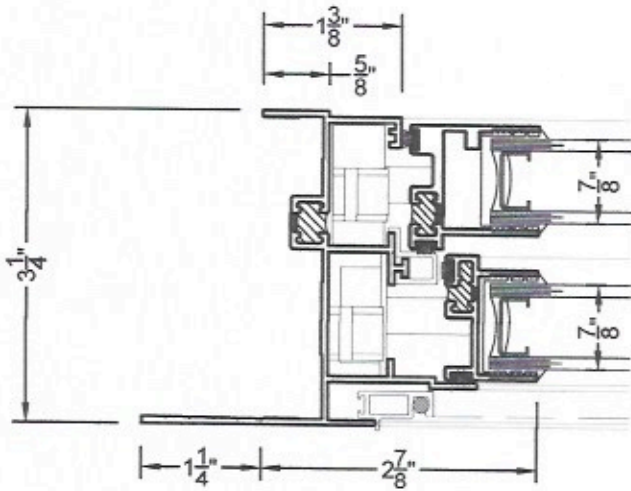
②B 2-1/2" FLANGE SILL  
DH2000A



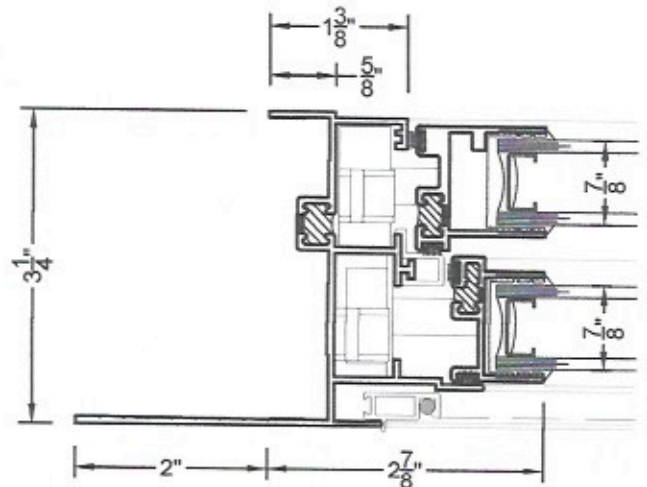
③ 7/8" FLANGE JAMB  
DH2000A



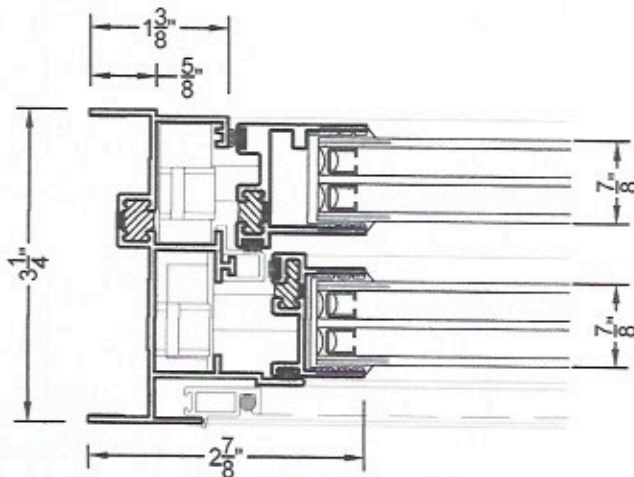
③B 1-5/8" FLANGE JAMB  
DH2000A



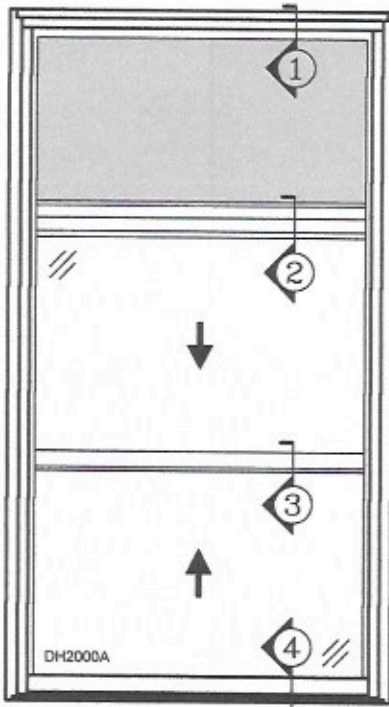
③A 1-1/4" FLANGE JAMB  
DH2000A



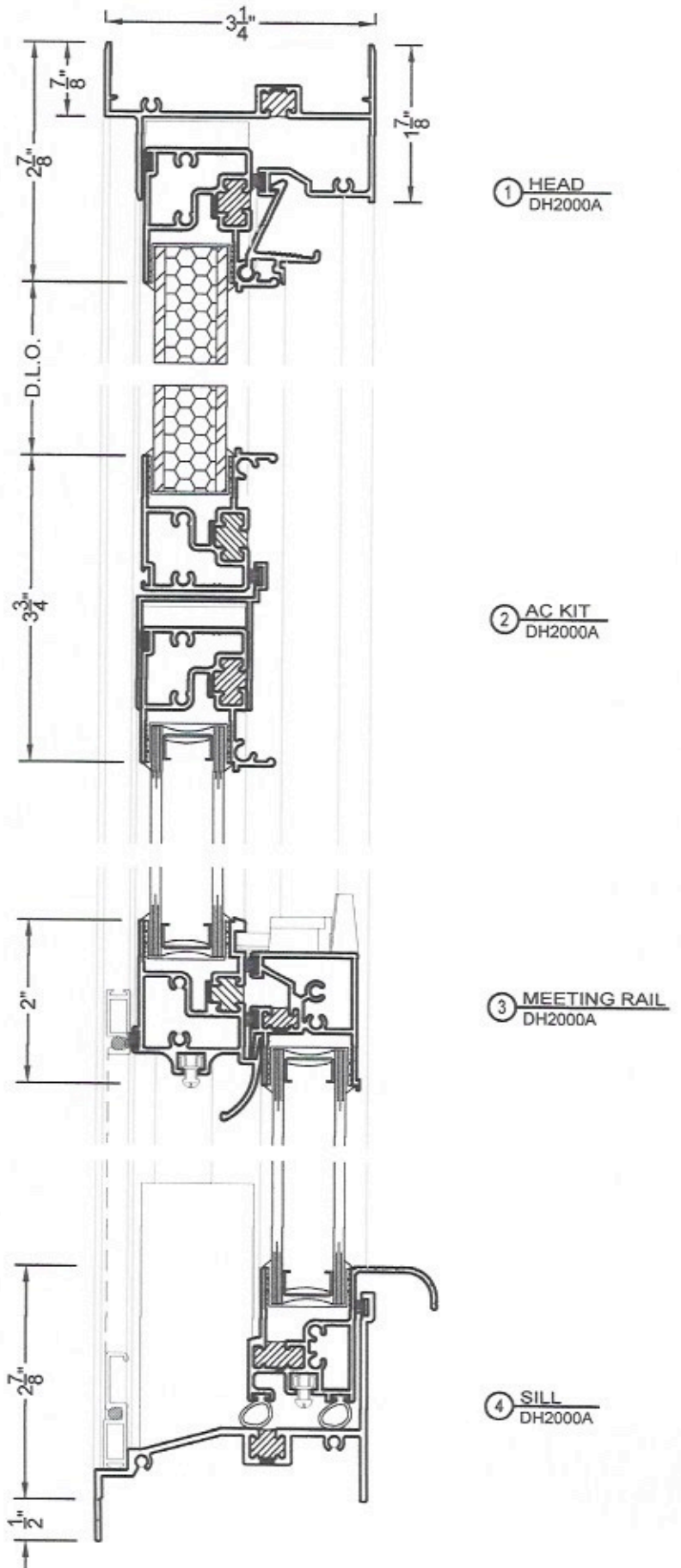
③C 2" FLANGE JAMB  
DH2000A



③D JAMB W/ TRIPLE GLAZING  
DH2000A



DH2000A WITH A/C ORIEL KIT  
AT TOP SASH



① HEAD  
DH2000A

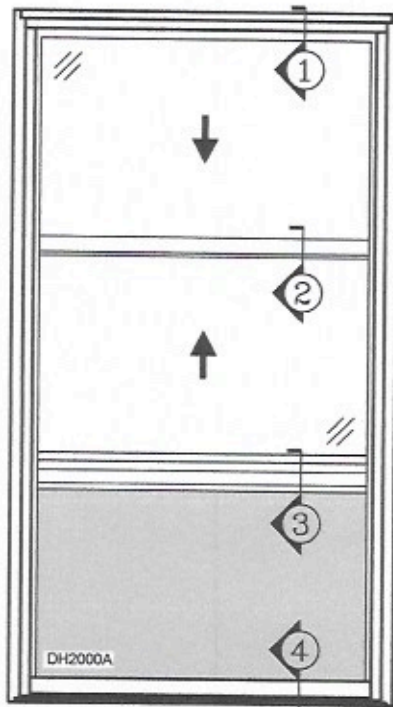
② AC KIT  
DH2000A

③ MEETING RAIL  
DH2000A

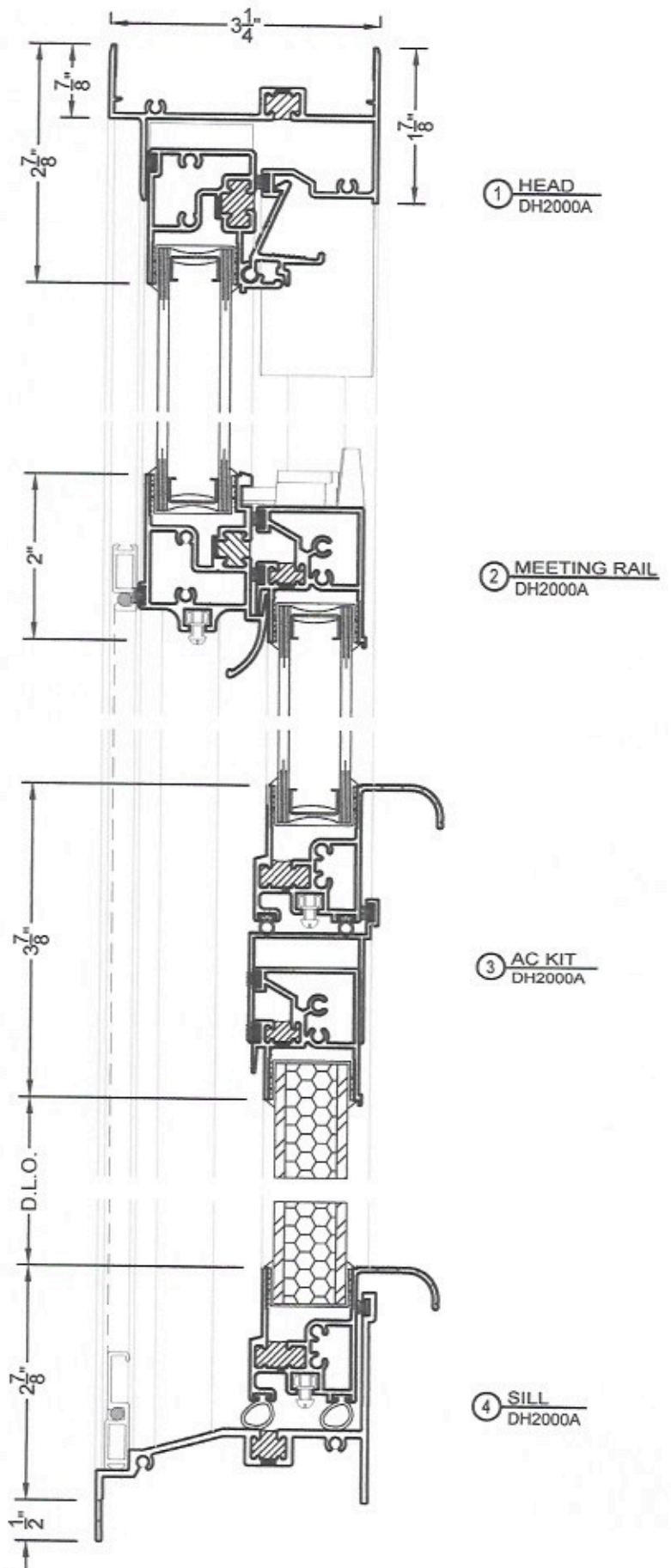
④ SILL  
DH2000A

VER: 2020.03

NO WATER PERFORMANCE  
WARRANTY FOR A/C ORIEL KIT.  
PLEASE CONTACT YOUR SALE REP.  
FOR MORE INFORMATION.



DH2000A WITH A/C ORIEL KIT  
 AT BOTTOM SASH



① HEAD  
 DH2000A

② MEETING RAIL  
 DH2000A

③ AC KIT  
 DH2000A

④ SILL  
 DH2000A

VER: 2020.03

NO WATER PERFORMANCE  
 WARRANTY FOR A/C ORIEL KIT.  
 PLEASE CONTACT YOUR SALE REP.  
 FOR MORE INFORMATION.