



BACK BAY FENS PATHWAYS

Victory Garden Conceptual Design



March 23, 2023
Boston Parks and Recreation



MEETING RECORDING



The Boston Parks and Recreation Department will be recording the meeting and posting to our project webpage for those who are unable to attend the Zoom meeting live.

It is possible that participants may also be recording the meeting with their phones cameras or other devices. If you do not wish to be recorded during this meeting, please keep your microphone muted and camera off.

Please share with your neighbors and friends,

WEB LINK:

boston.gov/fens-pathways

AGENDA

1

PROJECT TEAM

2

PROJECT STATUS/RECAP

3

PRESENTATION OF CONCEPTUAL DESIGN

4

LISTENING AND DISCUSSION

5

CLOSING REMARKS & NEXT STEPS

Improvements to
Back Bay Fens Pathways
Victory Garden Conceptual Design

PROJECT TEAM

Lauren Bryant

Project Manager

lauren.bryant@boston.gov or 617-961-3019

Margaret Van Scoy

Office of Neighborhood Services:

margaret.vanscoy@boston.gov or 617-635-2679

Kyle Zick

Principal, Kyle Zick Landscape Architecture, Inc.

Rob Barella

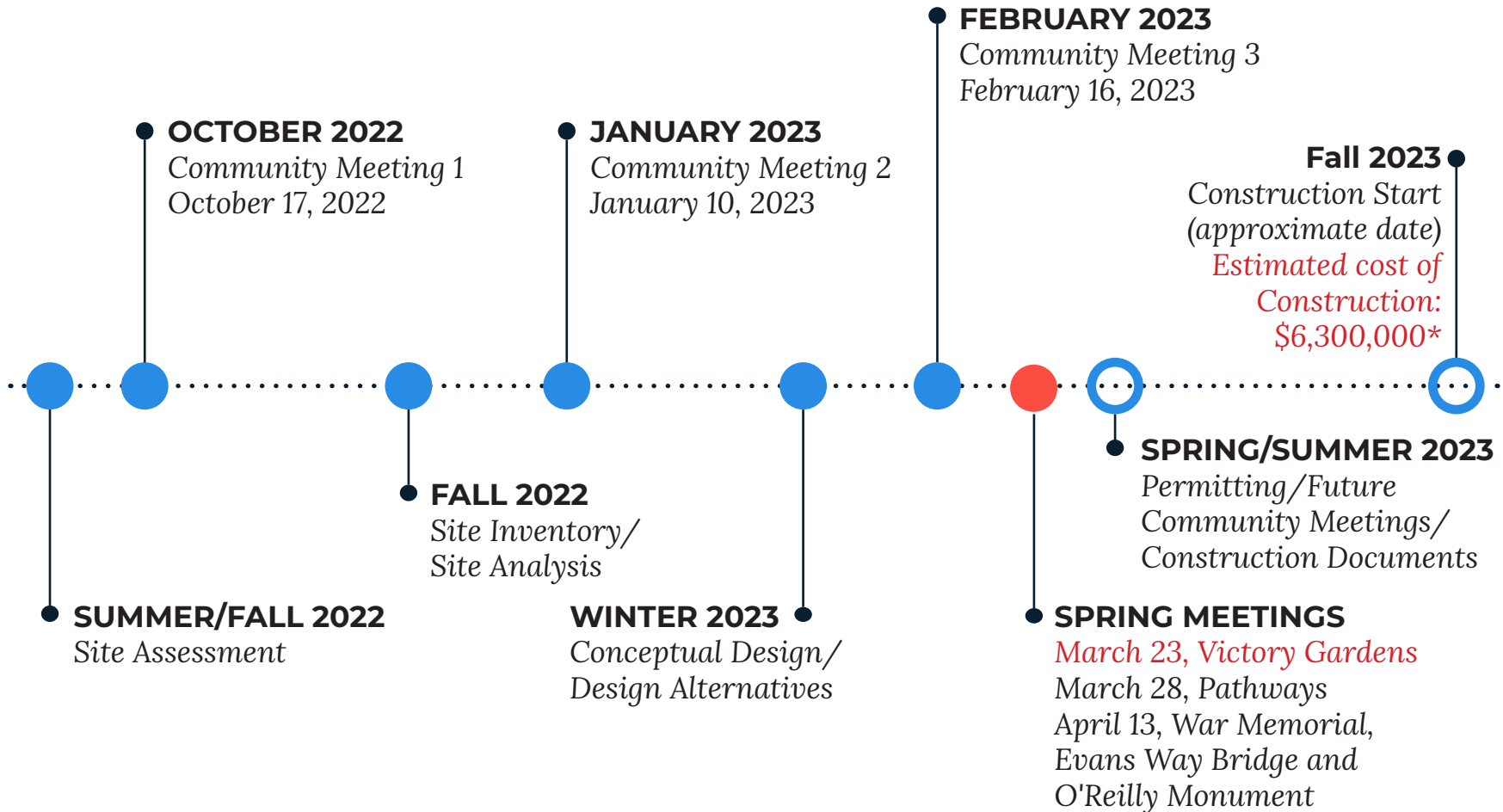
Associate, Kyle Zick Landscape Architecture, Inc.



Improvements to
Back Bay Fens Pathways
Victory Garden Conceptual Design



PROJECT SCHEDULE & FUNDING



*Budget to increase for addition of WWII Memorial, O'Reilly Memorial and Evans Way Bridge Scopes

Improvements to
Back Bay Fens Pathways
Victory Garden Conceptual Design

STAKEHOLDER OUTREACH

- **Emerald Necklace Conservancy**
- **Fenway Garden Society**
- **Fenway Civic Association**
- **Department of Conservation and Recreation**
- **Boston Transportation Department**
- **Boston Community Preservation**
- **Boston Arts Commission**
- **Boston Landmarks**
- **Boston Trust Office**
- **Army Corps of Engineers**

Meetings to Schedule:

- **Veterans group**
- **Boston Disabilities Commission**
- **Boston Conservation Commission**

CITY OF BOSTON PRIORITIES

- **Expanding walkable access to parks**
- **Addressing equity**
- **Climate resilience**
- **Health**
- **Housing and community building**



PARK & RECREATION GOALS

- **Accessible and available to all**
- **Diverse, balanced, and efficient mix of uses**
- **Meaningful and inclusive community engagement**
- **Adaptive and resilient landscapes**
- **Promote connections**



BACK BAY FENS PATHWAYS DESIGN SCOPE OF WORK

Review and amend pathways to improve:

- **Accessibility**
- **Desirability and uses**
- **Stormwater and runoff**
- **Materials**
- **Pathway longevity**



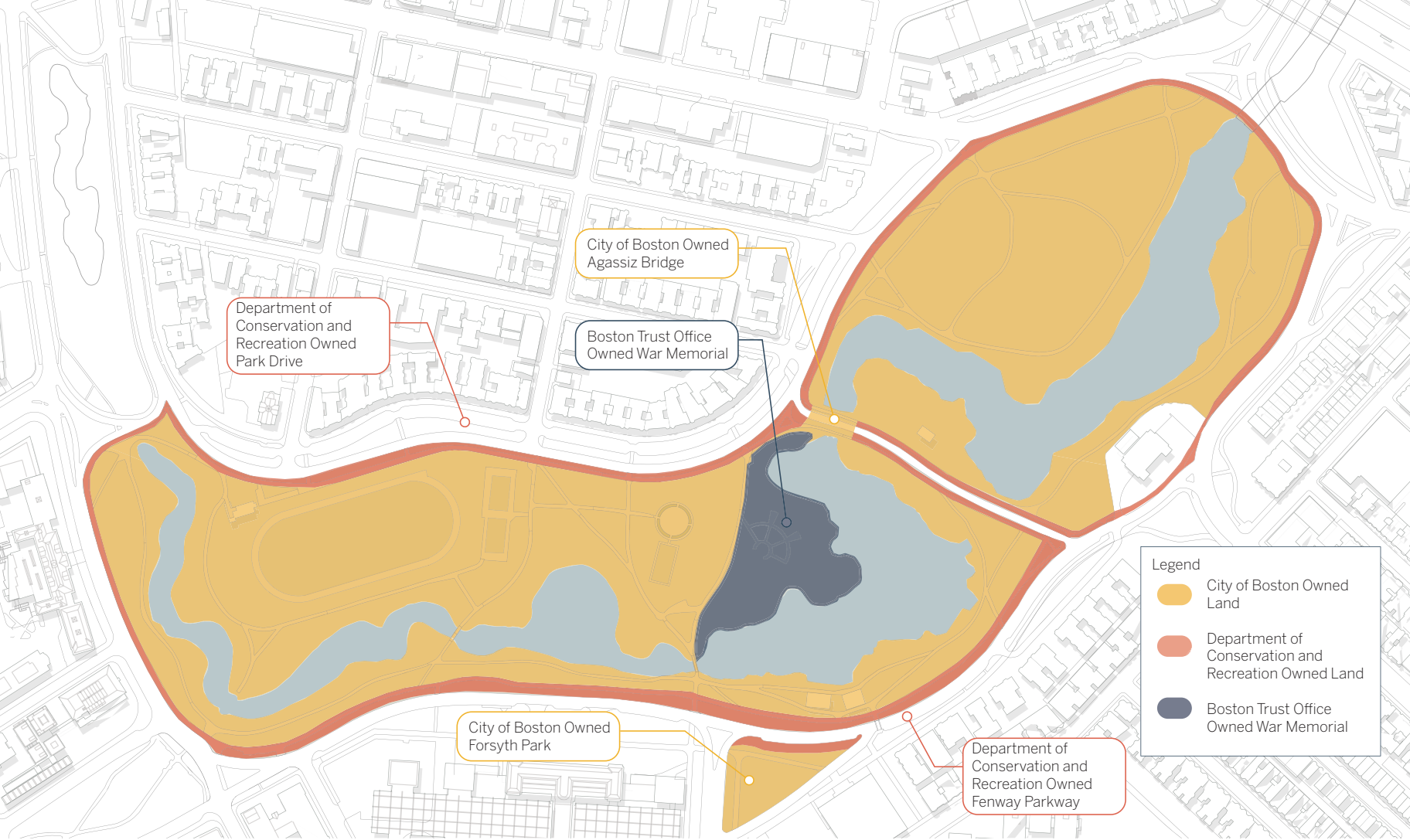
Legend

- | | | | |
|---|-------------------------|----|------------------------------|
| 1 | Clemente Field | 10 | Fire Communication Building |
| 2 | Kelleher Rose Garden | 11 | Mothers Rest |
| 3 | Temple Bell | 12 | John Boyle O'Reilly Memorial |
| 4 | War Memorial | 13 | Park Drive |
| 5 | ENC Visitor Center | 14 | Fenway |
| 6 | Agassiz Road Duck House | 15 | Footbridge 1 |
| 7 | Agassiz Bridge | 16 | Footbridge 2 |
| 8 | Victory Gardens | 17 | Evans Way Bridge (Removed) |
| 9 | Robert Burns Statue | | |



BACK BAY FENS - LANDMARKS PLAN

Improvements to
Back Bay Fens Pathways
Victory Garden Conceptual Design



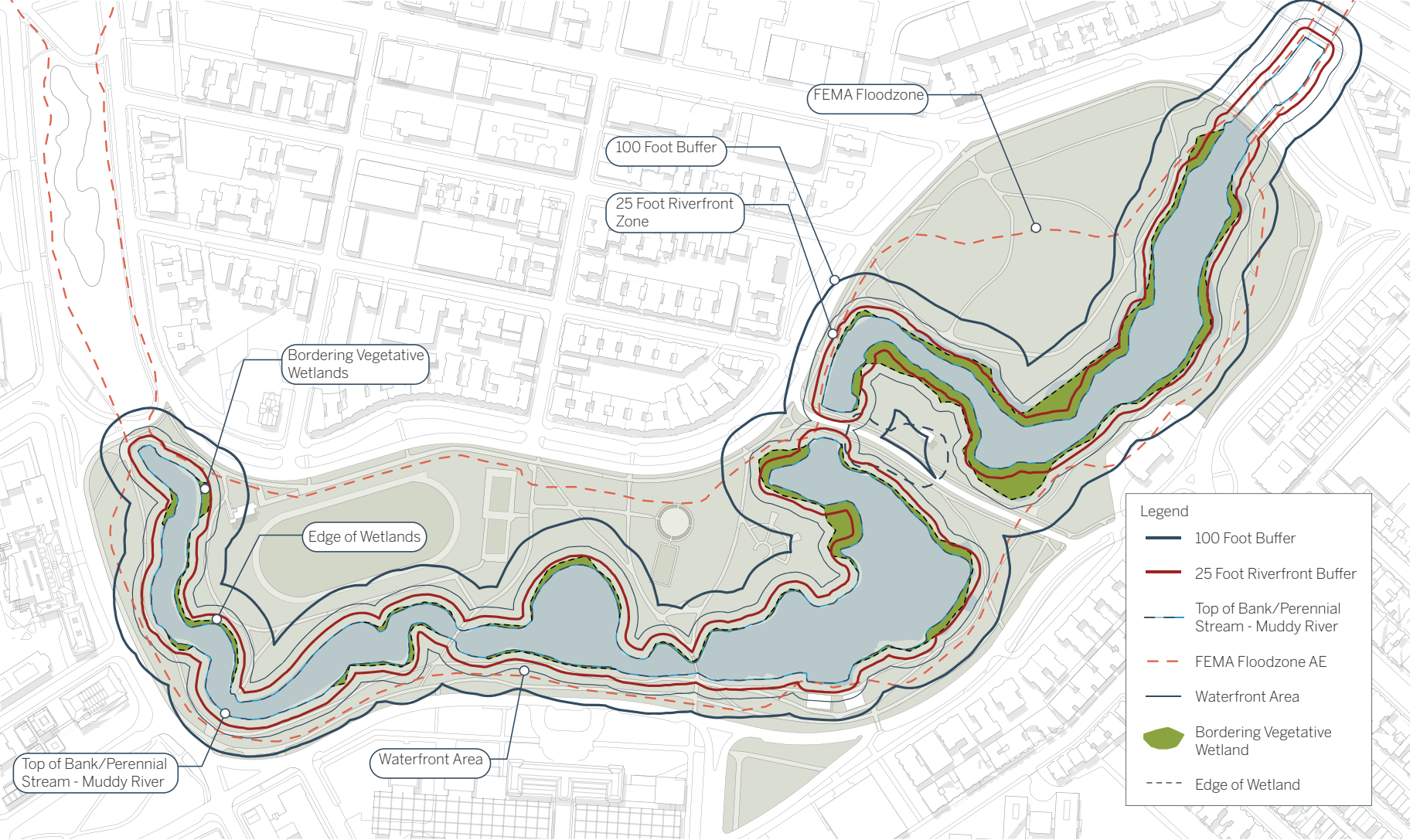
BACK BAY FENS - LAND OWNERSHIP

Improvements to
Back Bay Fens Pathways
Victory Garden Conceptual Design



BACK BAY FENS - PATHWAY OWNERSHIP

Improvements to
Back Bay Fens Pathways
Victory Garden Conceptual Design



BACK BAY FENS - WETLAND RESOURCES

Improvements to
Back Bay Fens Pathways
Victory Garden Conceptual Design



STUDY PLANS - PATHS ALIGNMENT OPTIONS

Improvements to
Back Bay Fens Pathways
Victory Garden Conceptual Design



VICTORY GARDEN EXISTING CONDITIONS PLAN

Improvements to
Back Bay Fens Pathways
Victory Garden Conceptual Design



VICTORY GARDEN EXISTING CONDITIONS PHOTOS

Improvements to
Back Bay Fens Pathways
Victory Garden Conceptual Design



VICTORY GARDEN POTENTIAL IMPROVEMENTS

Improvements to
Back Bay Fens Pathways
Victory Garden Conceptual Design



VICTORY GARDEN SITE FURNISHINGS

Improvements to
Back Bay Fens Pathways
Victory Garden Conceptual Design

A Victory Garden for a Family of Five

On a Plot 25 x 50 ft.

Mix a small quantity of sandy peat soil with all horset, corral, garbage and brush from before they fall. Use summer rubbishs only for fuel. Use early varieties except in Fall.

ONIONS, followed by LEAF LETTUCE	12 in.
HEAD LETTUCE, followed by SPINACH	24 in.
BEETS, followed by CABBAGES	24 in.
SPINACH, followed by BEETS	24 in.
YELLOW GLAZED ONIONS for pickling	12 in.
1/2 row PARSNIPS—1/2 row CARROT SEEDS	18 in.
ENJOYE, followed by LEAF LETTUCE	24 in.
MUSCOLO interplanted with EARLY CABBAGE	24 in.
LATE CABBAGE interplanted with EARLY ENJOYE	24 in.
PARSNIPS	24 in.
LEAF LETTUCE, followed by POTATOGAS	24 in.
NEW ZEALAND SPINACH	24 in.
EARLY ONION SETS	18 in.
TOMATOES interplanted with HEAD LETTUCE	18 in.
HEAD LETTUCE	18 in.
TOMATOES interplanted with EARLY CABBAGE	18 in.
ONION SETS	18 in.
TOMATOES interplanted with EARLY ONION SETS	18 in.
CARROTS, followed by LATE SPINACH	18 in.
BUSH BEANS, followed by TURNIPS	24 in.
SWISS CHARD	18 in.
BEETS, followed by 1/2 row HEAD LETTUCE—1/2 row RADISHES	18 in.
ONION SETS, followed by 1/2 row LEAF LETTUCE—1/2 row RADISHES	18 in.
EARLY CABBAGE, followed by BUSH LIMAS	18 in.
SPINACH, followed by CARROTS	24 in.
PARSNIPS	18 in.
1/2 row LEAF LETTUCE—1/2 row RADISHES, followed by BUSH BEANS	18 in.
LATE CARROTS for dining	18 in.
BUSH LIMAS	18 in.

ISSUED BY ILLINOIS STATE COUNCIL OF DEFENSE,
GOVERNOR DWIGHT H. GREEN, Chairman

Come into the Garden Dad!

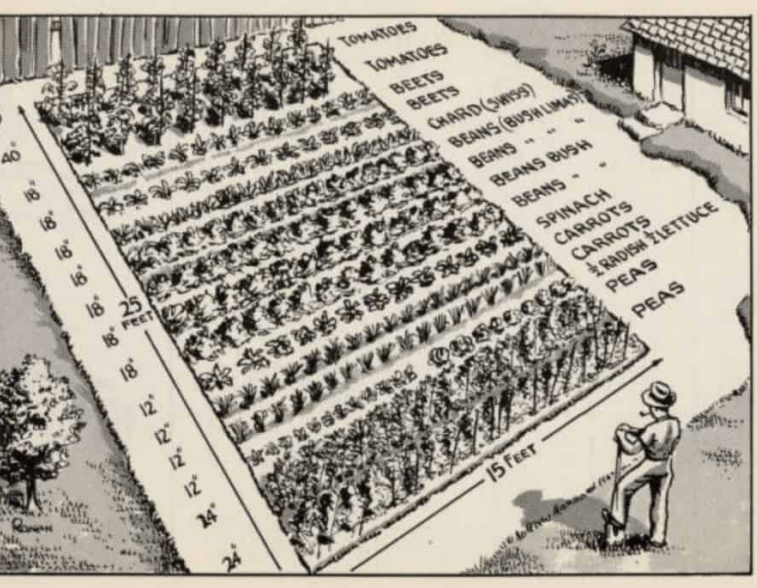
MAKE THIS SUMMER'S GARDEN PROVIDE NEXT WINTER'S VEGETABLES

GROW POTATOES BEANS PEAS ONIONS

WAR GARDENS FOR VICTORY

GROW VITAMINS AT YOUR KITCHEN DOOR

VICTORY GARDENS



Uncle Sam says-

GARDEN

To Cut Food Costs

Ask the—
U.S. Department of Agriculture Washington, D.C.
For a FREE Bulletin on Gardening—It's food for thought

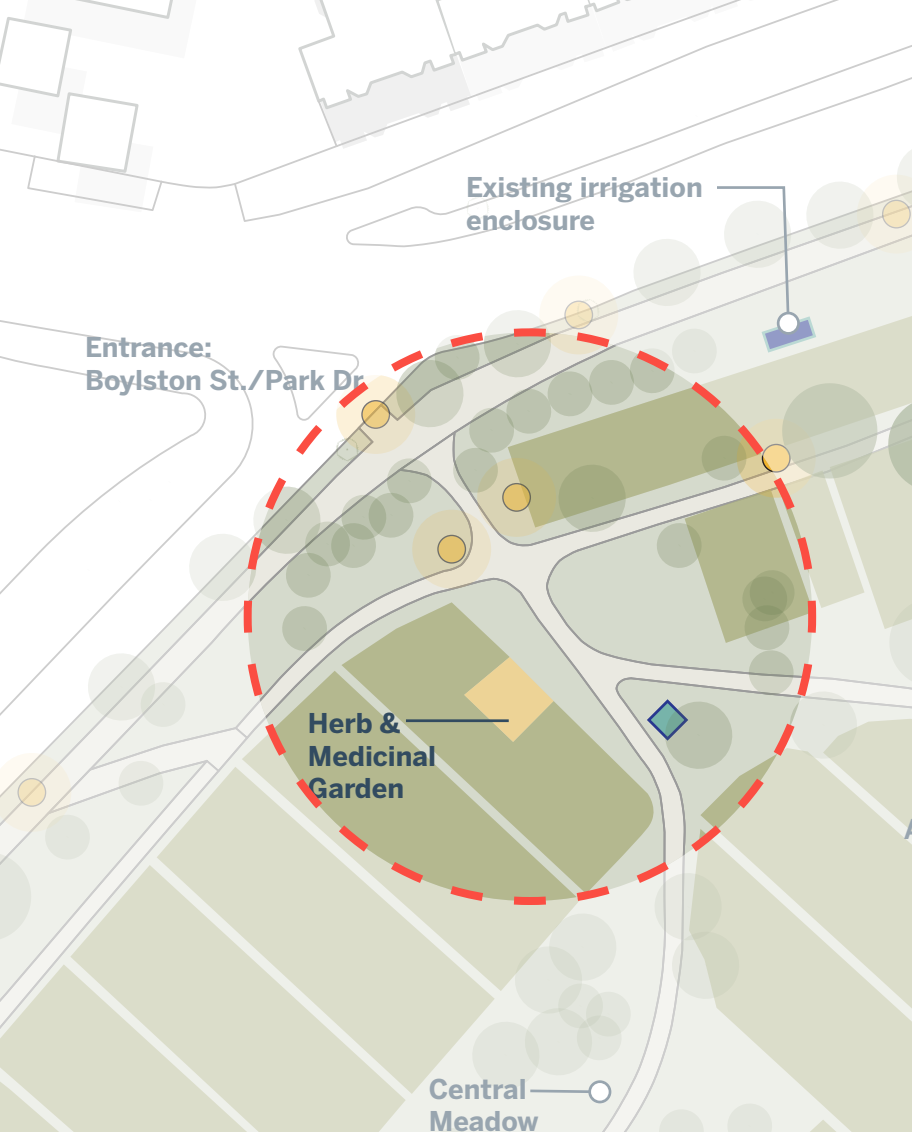
GARDEN for VICTORY

6 30, 717
2 1/2, 2 1/2
NO. 232

BULLETIN 232 OF THE AGRICULTURAL EXTENSION SERVICE, OHIO STATE UNIVERSITY
OHIO HISTORICAL SOCIETY

VICTORY GARDEN HISTORY & INSPIRATION

Improvements to
Back Bay Fens Pathways
Victory Garden Conceptual Design



Boylston St. & Park Dr. Entrance:

- Enhance arrival
- Add signage and placemaking
- Improve accessibility
- Provide pedestrian amenities
- Connections to public plots
- Pathway resurfacing



VICTORY GARDEN CONCEPT DESIGNS

Improvements to
Back Bay Fens Pathways
Victory Garden Conceptual Design

DESIGN CONCEPTS



CONCEPT A



CONCEPT B



CONCEPT C



CONCEPT D



CONCEPT E



CONCEPT F

VICTORY GARDEN CONCEPT DESIGNS

Improvements to
Back Bay Fens Pathways
Victory Garden Conceptual Design

SCALE OF IMPROVEMENTS



Minimal Improvements:

- Address immediate concerns
- Repave pathways
- Add accessible routes
- Possible seating & signage

OR



Larger Expression:

- Redesign garden entrance
- Enhance first impression
- Build space for programming and events

VICTORY GARDEN CONCEPT DESIGNS

Improvements to
Back Bay Fens Pathways
Victory Garden Conceptual Design

OPTION A



VICTORY GARDEN CONCEPT DESIGNS

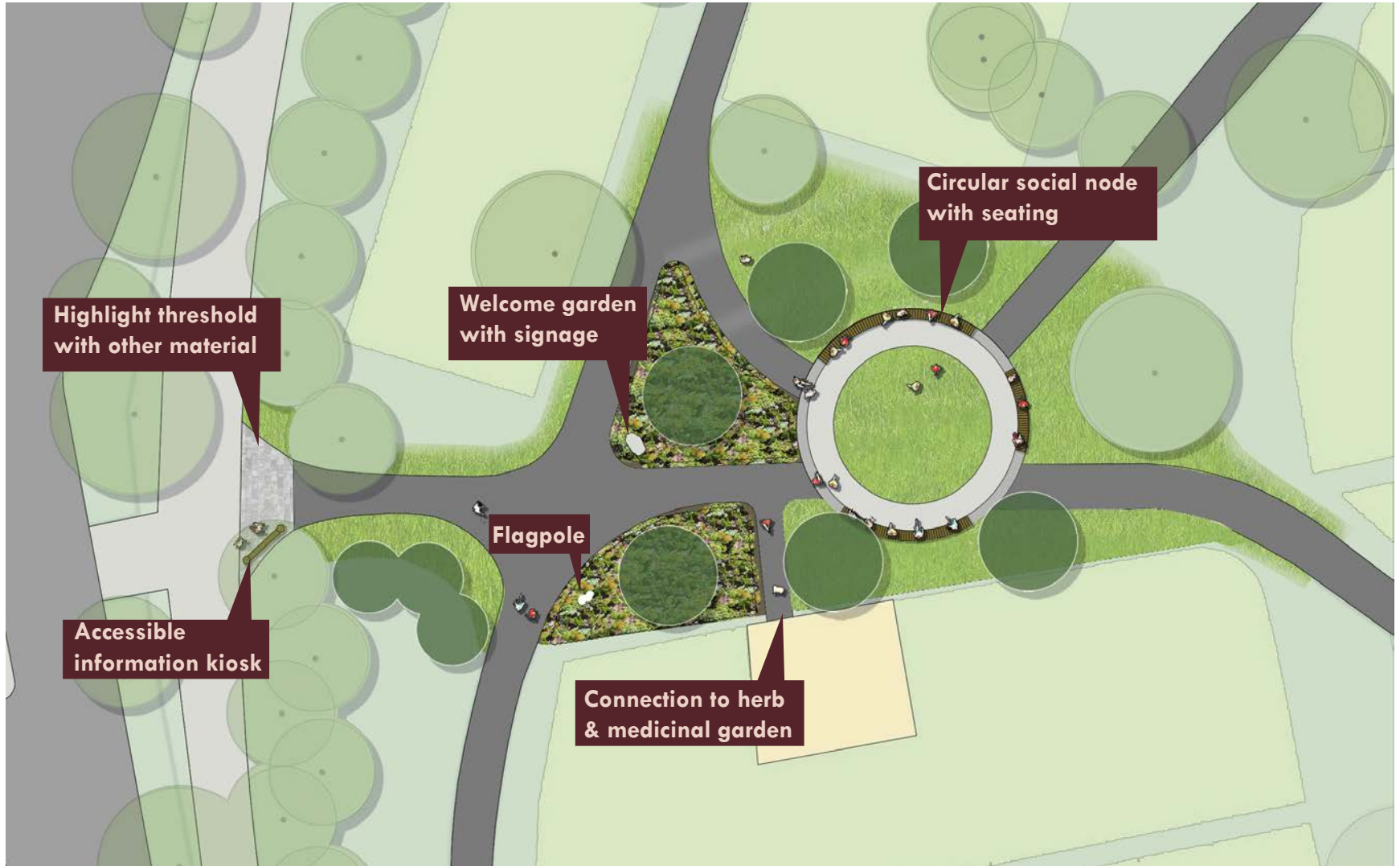
Improvements to
Back Bay Fens Pathways
Victory Garden Conceptual Design

OPTION B



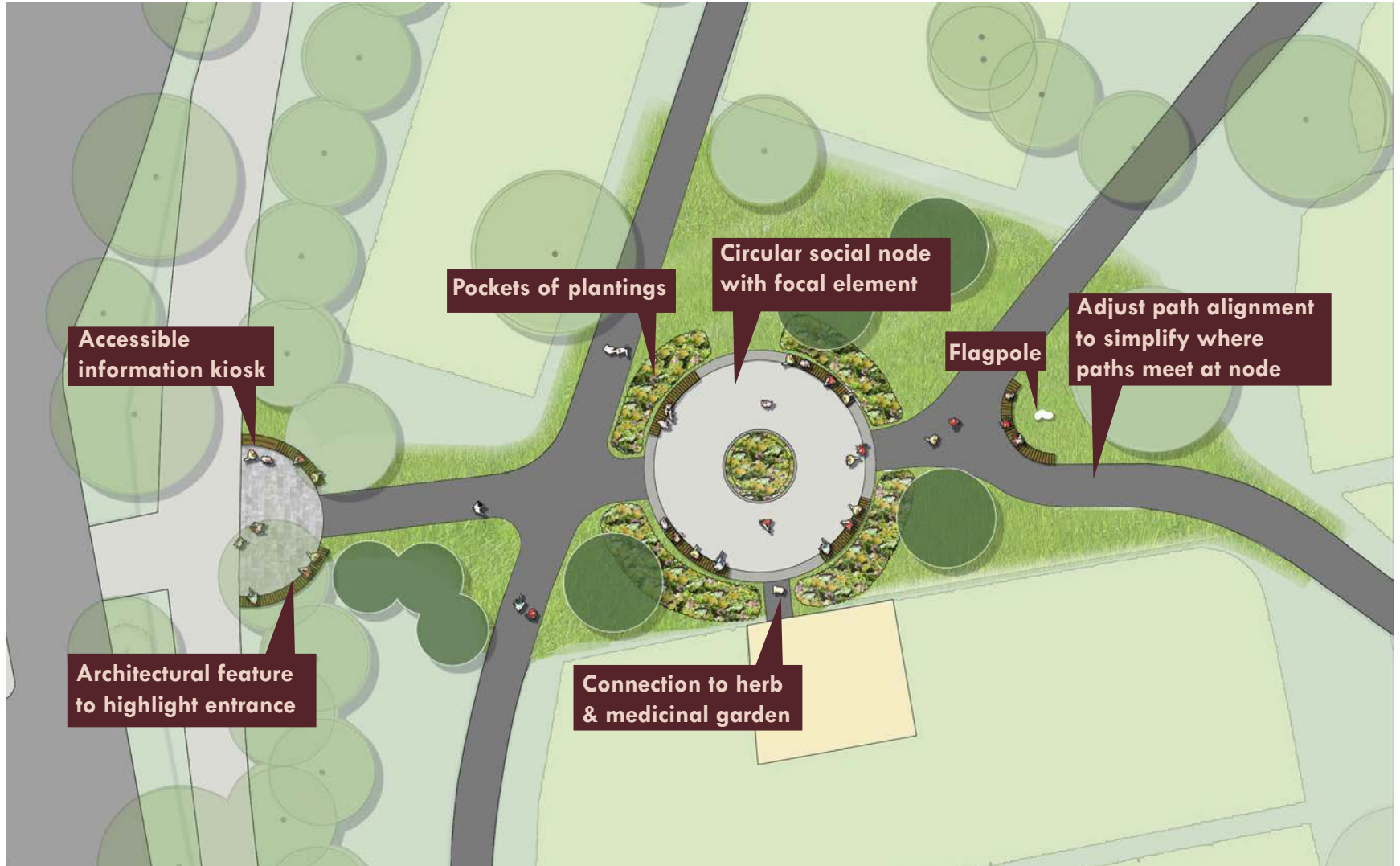
Improvements to
Back Bay Fens Pathways
Victory Garden Conceptual Design

OPTION C



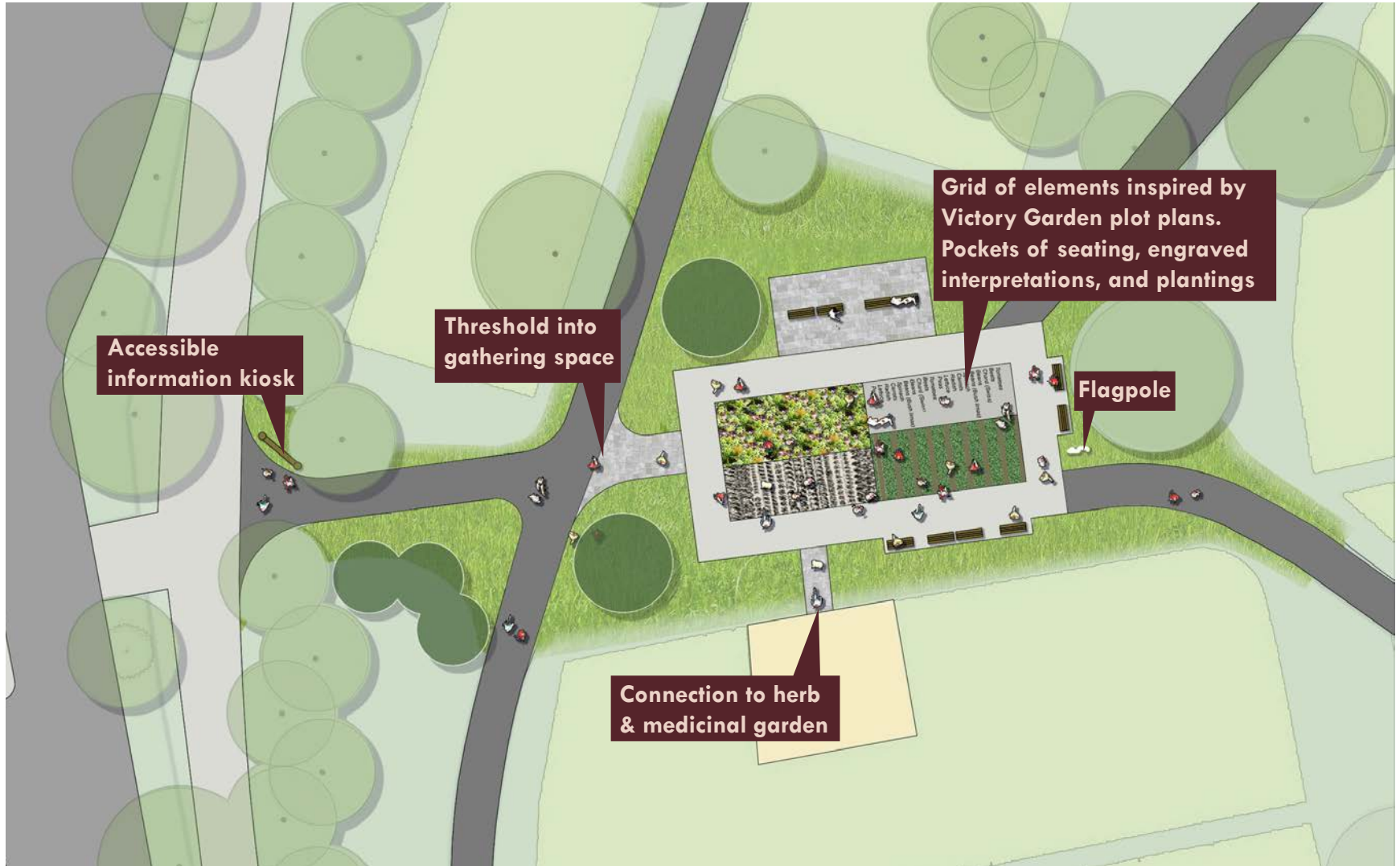
Improvements to
Back Bay Fens Pathways
Victory Garden Conceptual Design

OPTION D



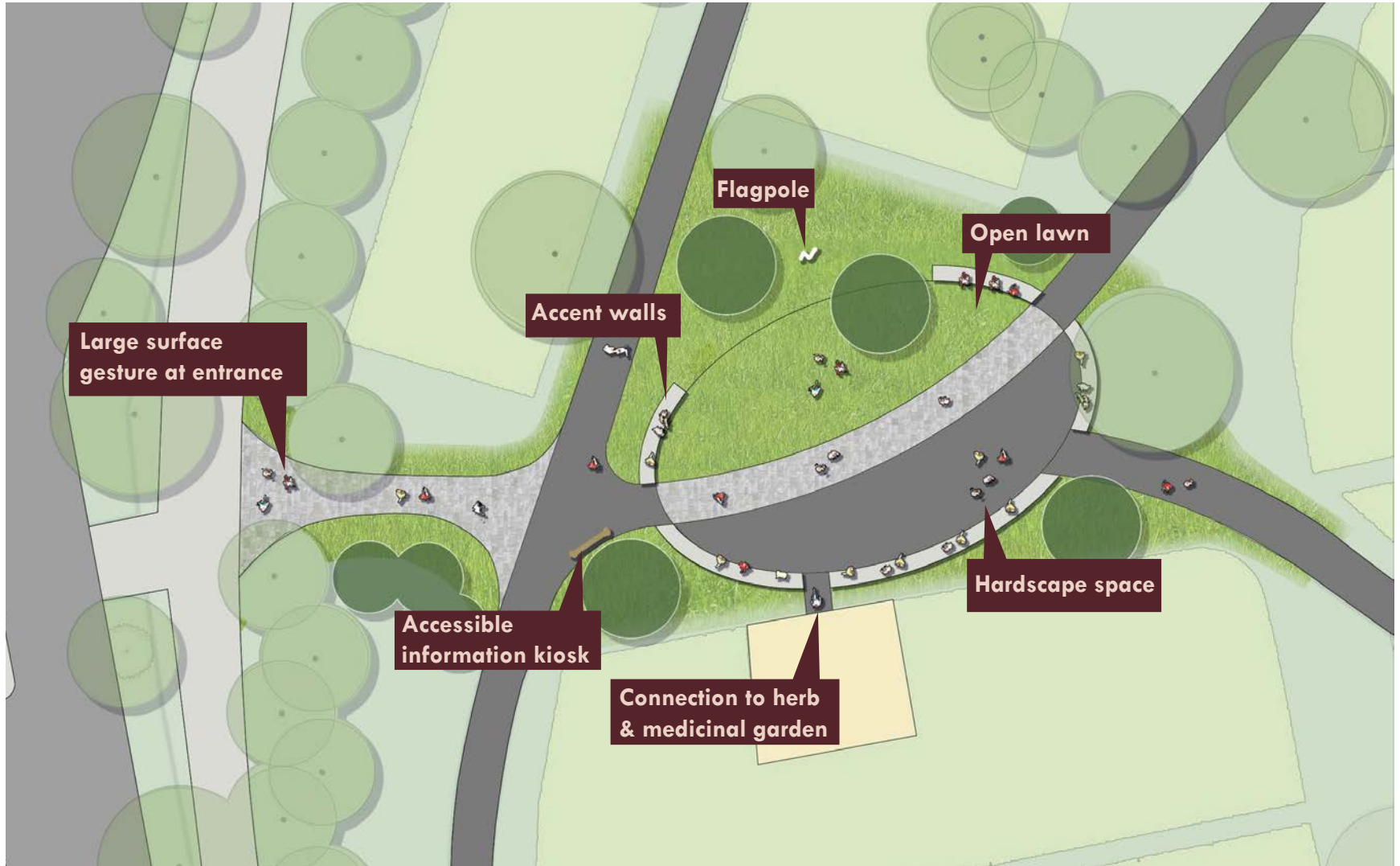
Improvements to
Back Bay Fens Pathways
Victory Garden Conceptual Design

OPTION E



Improvements to
Back Bay Fens Pathways
Victory Garden Conceptual Design

OPTION F



Improvements to
Back Bay Fens Pathways
Victory Garden Conceptual Design

DESIGN CONCEPTS



CONCEPT A



CONCEPT B



CONCEPT C



CONCEPT D



CONCEPT E



CONCEPT F

VICTORY GARDEN CONCEPT DESIGNS

Improvements to
Back Bay Fens Pathways
Victory Garden Conceptual Design



LISTENING & DISCUSSION

Help us build great parks.
Let us know what matters to you.

NEXT STEPS

NEXT PUBLIC MEETING(S)

March 28, 2023 Pathways

April 13, 2023 War Memorial, Evans Way Bridge and
O'Reilly Memorial

VISIT PROJECT WEBSITE

WEB LINK:

boston.gov/fens-pathways

Scan me with your
phone's camera!



Improvements to
Back Bay Fens Pathways
Victory Garden Conceptual Design



THANK YOU!

See the project website for future updates.

Next Meeting(s):

March 28, 2023 Pathways

April 13, 2023 War Memorial, Evans Way Bridge and O'Reilly Memorial



For questions, maintenance requests or concerns regarding any of our parks contact 311



March 23, 2023
Boston Parks and Recreation

