

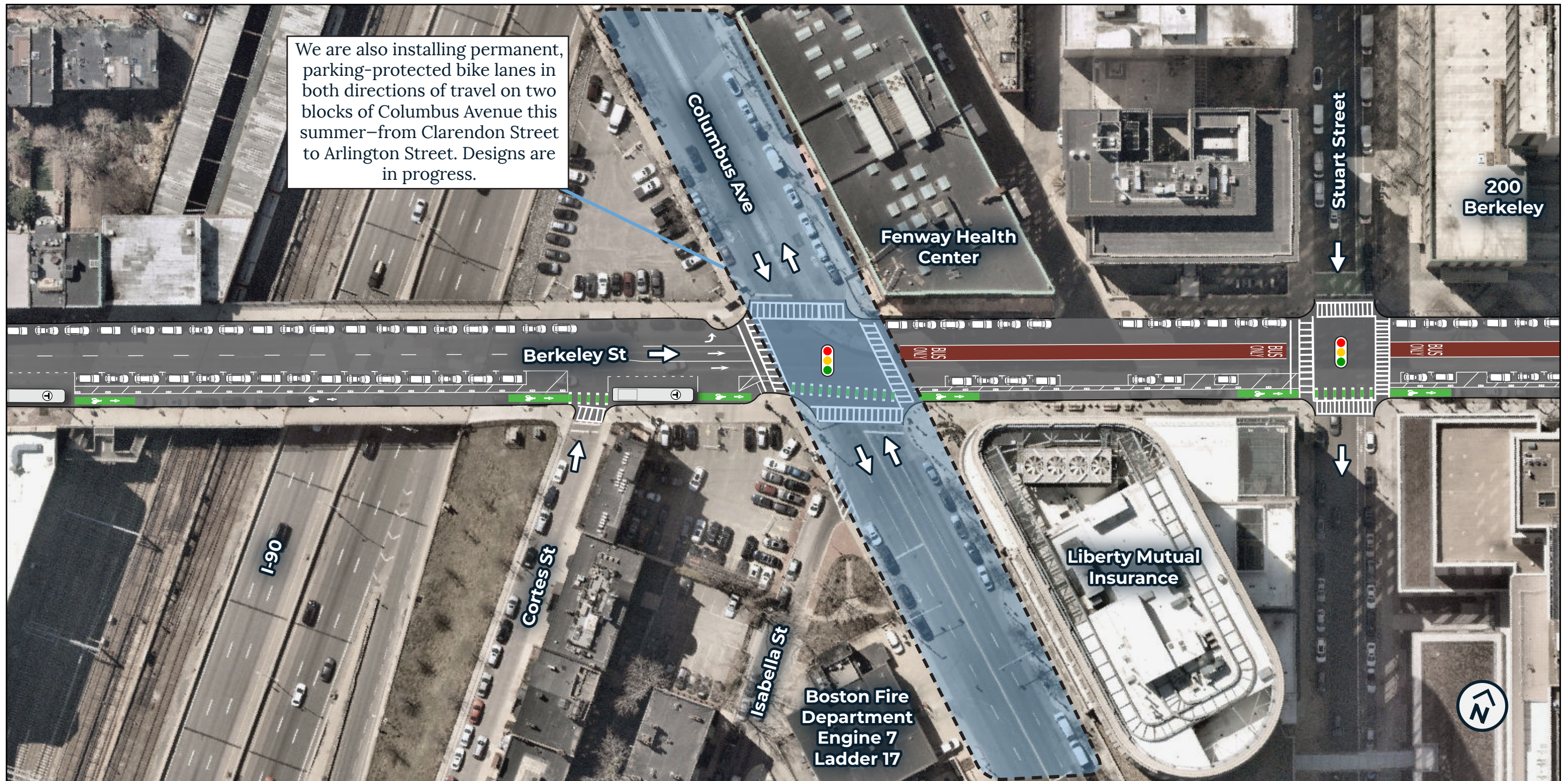


ABOUT THIS ILLUSTRATION

This is a representation of our design plans for Berkeley Street between Tremont Street and Beacon Street. It is for informational purposes only: it is not drawn to scale and is not meant for construction. Details are still subject to change. For more information, visit boston.gov/berkeley-street.

PARKING & CURB REGULATIONS

Vehicle parking is illustrated at approximately one parking space per 20' of curb length. We are working with abutters to set curb regulations.

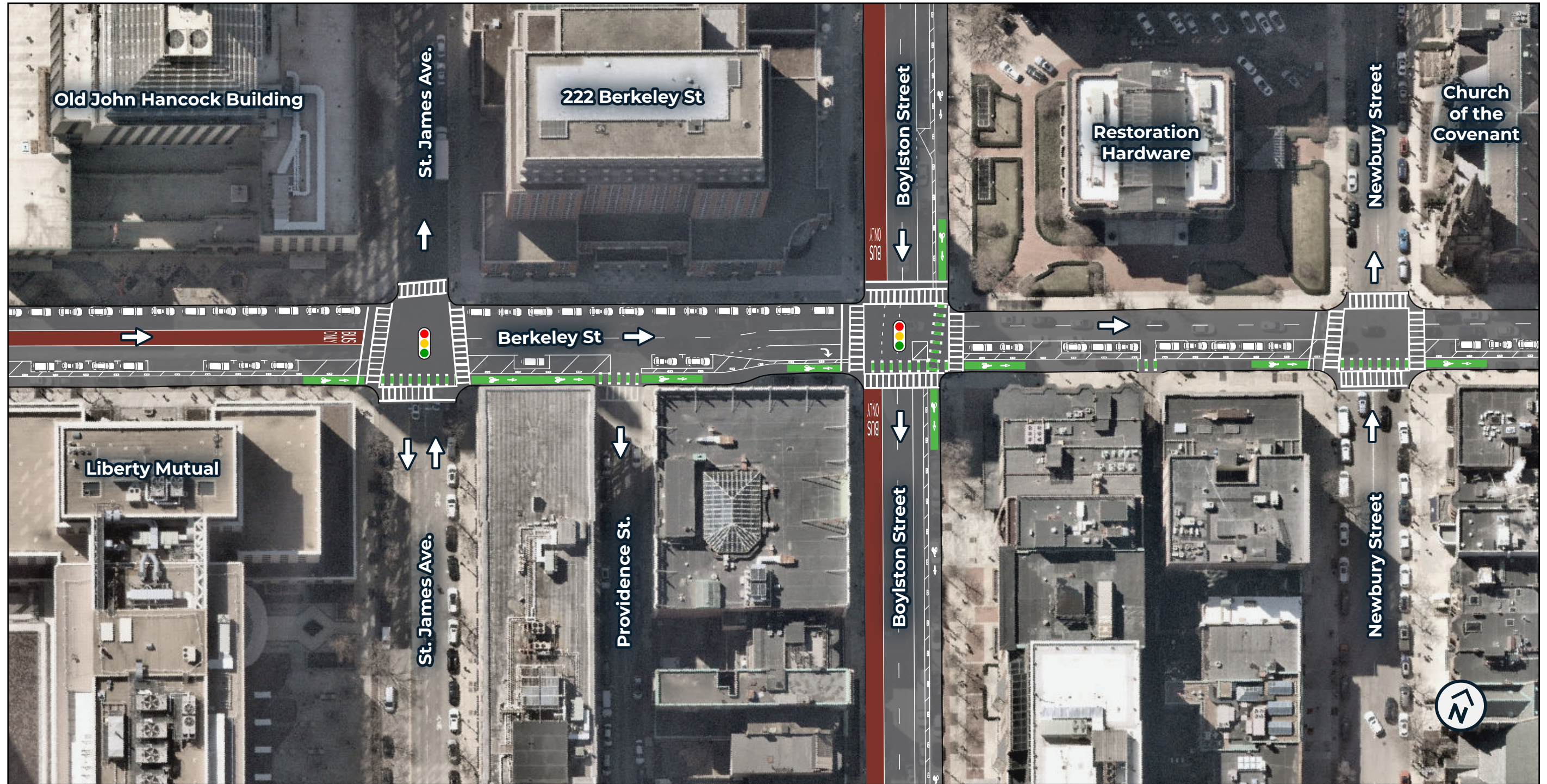


ABOUT THIS ILLUSTRATION

This is a representation of our design plans for Berkeley Street between Tremont Street and Beacon Street. It is for informational purposes only: it is not drawn to scale and is not meant for construction. Details are still subject to change. For more information, visit boston.gov/berkeley-street.

PARKING & CURB REGULATIONS

Vehicle parking is illustrated at approximately one parking space per 20' of curb length. We are working with abutters to set curb regulations.



ABOUT THIS ILLUSTRATION

This is a representation of our design plans for Berkeley Street between Tremont Street and Beacon Street. It is for informational purposes only: it is not drawn to scale and is not meant for construction. Details are still subject to change. For more information, visit boston.gov/berkeley-street.

PARKING & CURB REGULATIONS

Vehicle parking is illustrated at approximately one parking space per 20' of curb length. We are working with abutters to set curb regulations.

Published May 23, 2023.

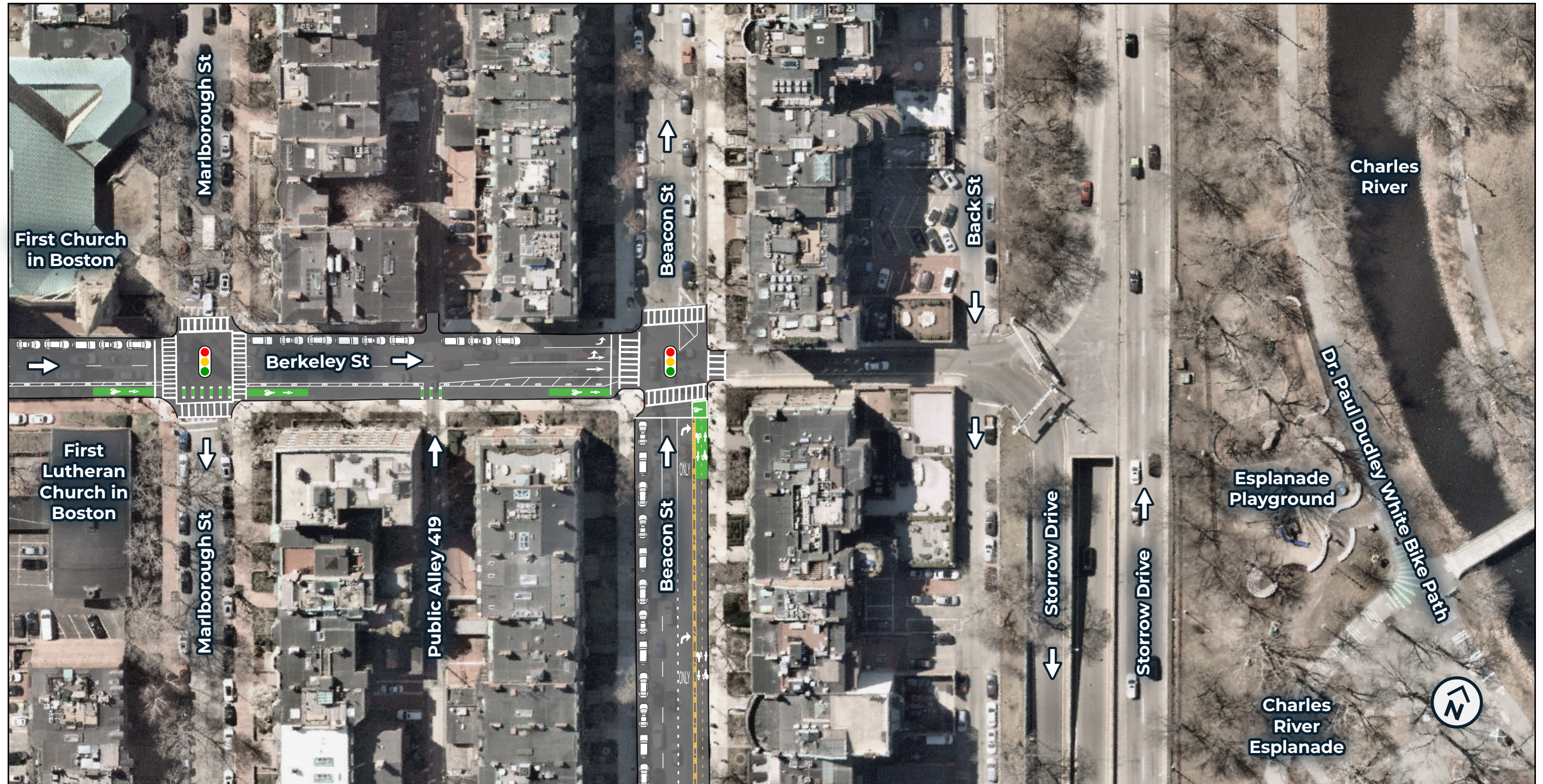


ABOUT THIS ILLUSTRATION

This is a representation of our design plans for Berkeley Street between Tremont Street and Beacon Street. It is for informational purposes only: it is not drawn to scale and is not meant for construction. Details are still subject to change. For more information, visit boston.gov/berkeley-street.

PARKING & CURB REGULATIONS

Vehicle parking is illustrated at approximately one parking space per 20' of curb length. We are working with abutters to set curb regulations.

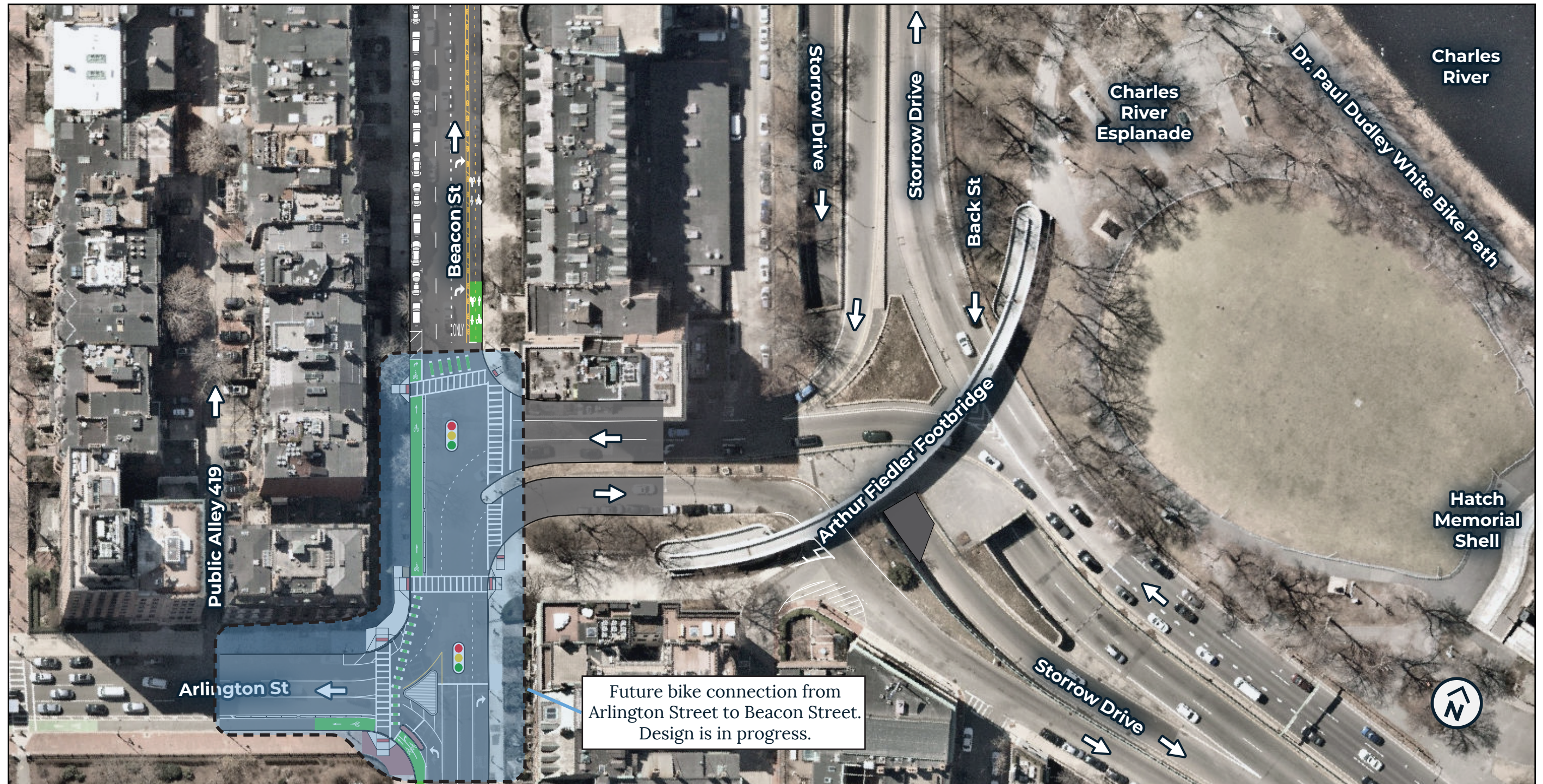


ABOUT THIS ILLUSTRATION

This is a representation of our design plans for Berkeley Street between Tremont Street and Beacon Street between Berkeley Street and Arlington Street. It is for informational purposes only: it is not drawn to scale and is not meant for construction. Details are still subject to change. For more information, visit boston.gov/berkeley-street.

PARKING & CURB REGULATIONS

Vehicle parking is illustrated at approximately one parking space per 20' of curb length. We are working with abutters to set curb regulations.



ABOUT THIS ILLUSTRATION

This is a representation of our design plans for Beacon Street between Arlington Street and Berkeley Street. It is for informational purposes only: it is not drawn to scale and is not meant for construction. Details are still subject to change. For more information, visit boston.gov/berkeley-street and boston.gov/connect-downtown.

PARKING & CURB REGULATIONS

Vehicle parking is illustrated at approximately one parking space per 20' of curb length. We are working with abutters to set curb regulations.