



Edwards School Renovation for the Horace Mann School

Design Update

May 16, 2023

Michelle Wu, Mayor
Mary Skipper, Superintendent, Boston Public Schools
Chief Dion Irish, Chief of Operations
Kerrie Griffin, Director, Public Facilities Department
Delavern Stanislaus, BPS Chief of Capital Planning

CITY of BOSTON
PUBLIC FACILITIES



WELCOME

CITY of BOSTON
PUBLIC FACILITIES



AGENDA

- Welcome & Introductions
- The Edwards - Project Overview
- Outdoor Areas
- Schedule Overview and Developments
- Q&A

CITY of BOSTON
PUBLIC FACILITIES



INTRODUCTION

- For today's conversation we are going to focus on some of the renovations to the Edwards School, and share some new updates on this project.
- The City of Boston Public Facilities Department (PFD) in partnership with BPS and the architectural firm Machado Silvetti is performing a renovation of The Edwards School. The renovation includes a number of accessibility and code upgrades, new mechanical, fire protection, lighting, visual public address system and finishes as well as four new exterior play areas. The building will house the Horace Mann School on levels two and three and the first level will be shared by the Horace Mann School and the Charlestown Warren Prescott Pre-K program.

CITY of BOSTON
PUBLIC FACILITIES



TEAM INTRODUCTIONS

- **Boston Public Schools**

Mary Skipper, Superintendent Boston Public Schools

Sam DePina, BPS Deputy of Operations

Delavern Stanislaus, BPS Chief of Capital Planning

Christine Landry, BPS Region 4 School Superintendent

Carolyn Meadows Márquez, BPS Capital Planning Project Manager

- **Horace Mann School**

Dr. Michelle Eisan-Smith, Head of School

Jennifer Greenfield, Assistant Head of School

Mary Simmons, ASL teacher

Melissa Brown, Elementary Director

Kate Angoff, Secondary Program Director

Mr. Charlie Kim, HMS Parent

- **Boston Public Facilities Department**

Dion Irish, Chief of Operations

Kerrie Griffin, Director

Evan Brinkman, Assistant Director for Design

Stephen Sarraco, Assistant Director for Construction

Michael Soucy, Senior Review Architect

Susan Phillipson, Project Manager

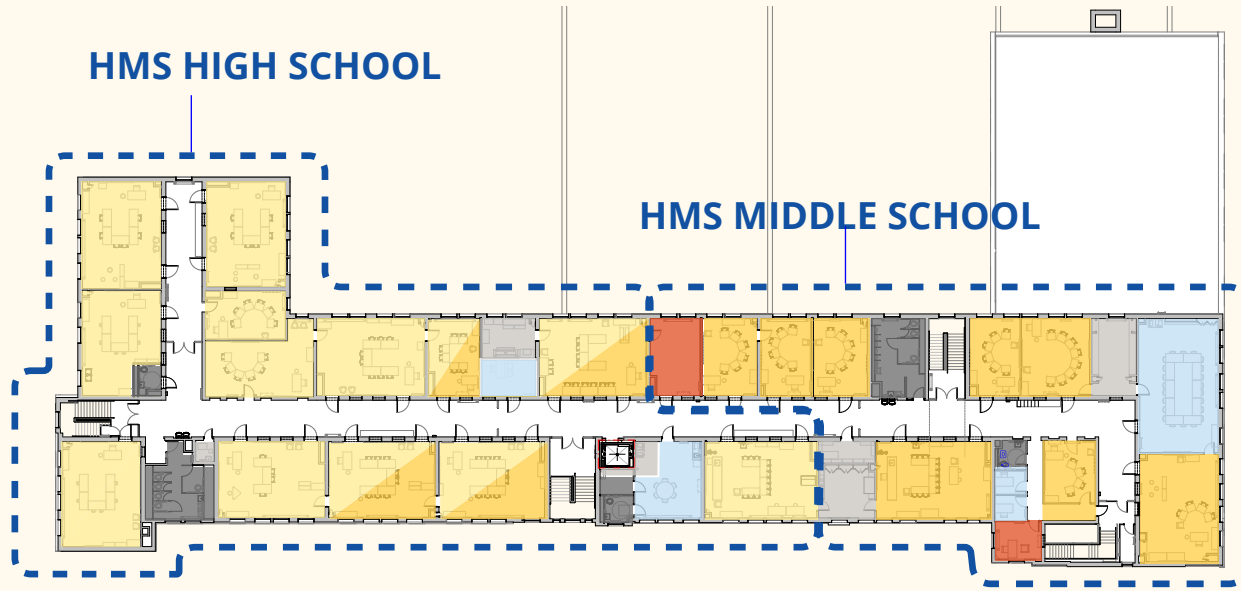
- **Design Team**

Stephanie Randazzo Dwyer, Principal, Machado Silveti

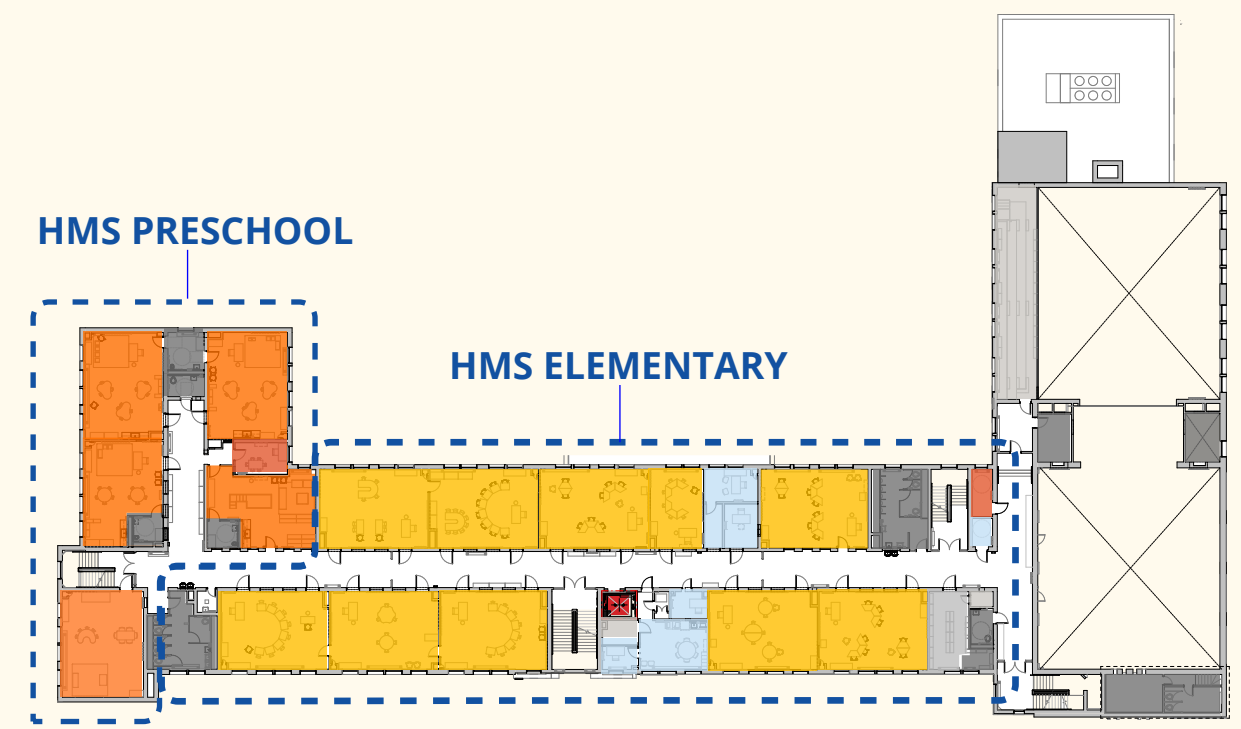
Emily Ashby, Associate, Machado Silveti

Sharon Komarow, Associate, KMDG

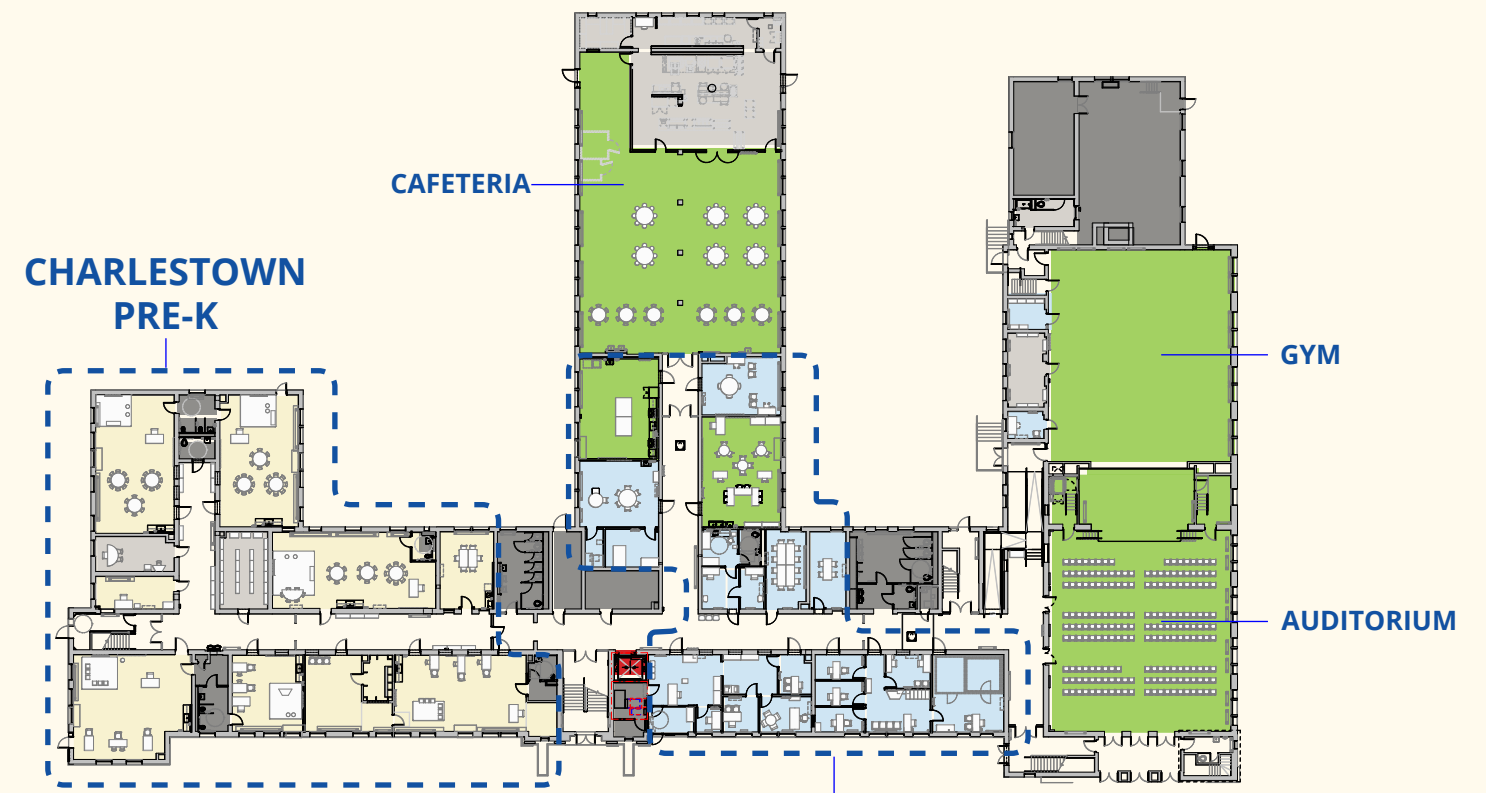
Jeffrey Mansfield, Deaf Specialist



LEVEL 3

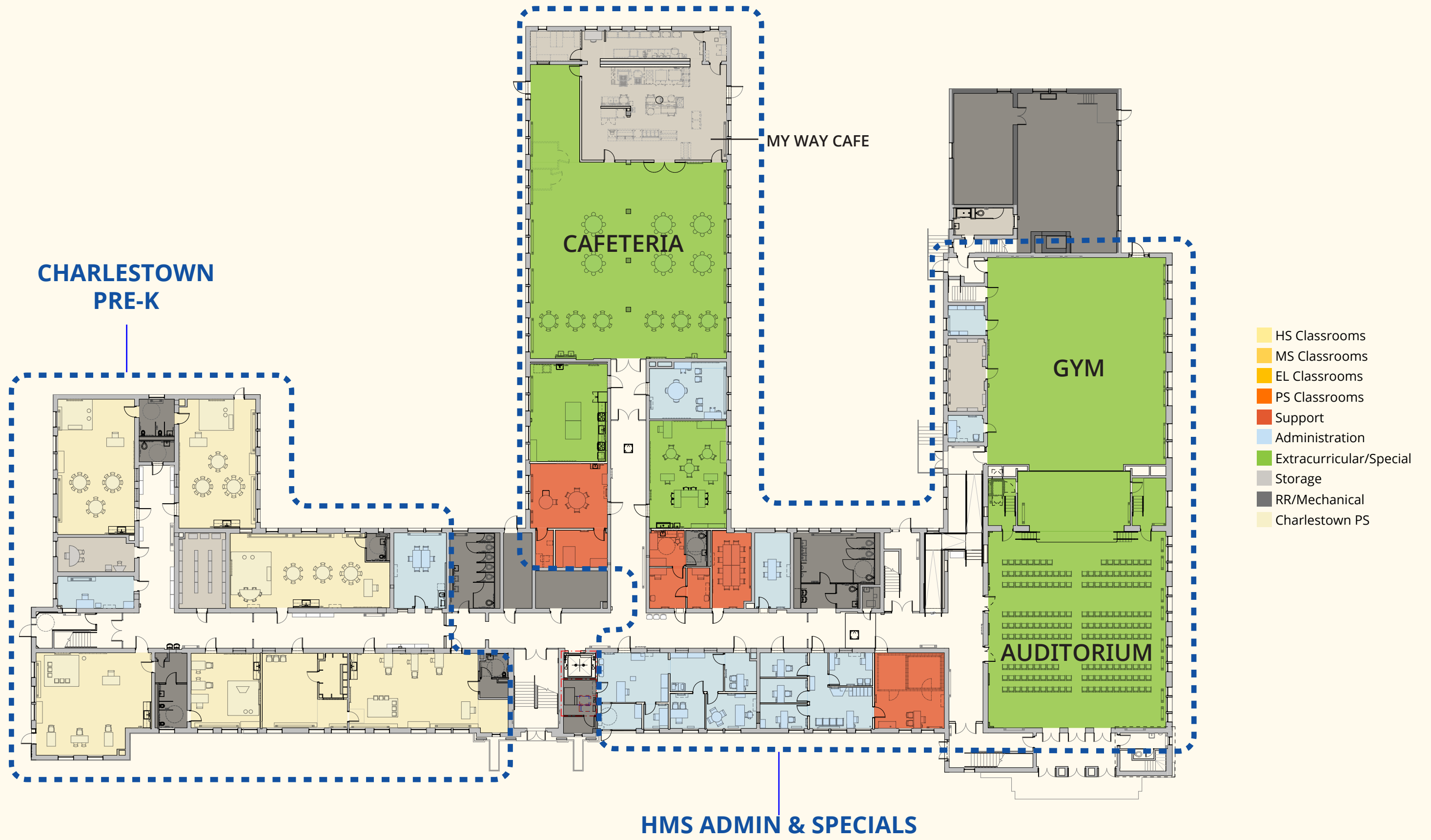


LEVEL 2



LEVEL 1

EDWARDS FLOOR PLANS



LEVEL 1



CAFETERIA



GYMNASIUM

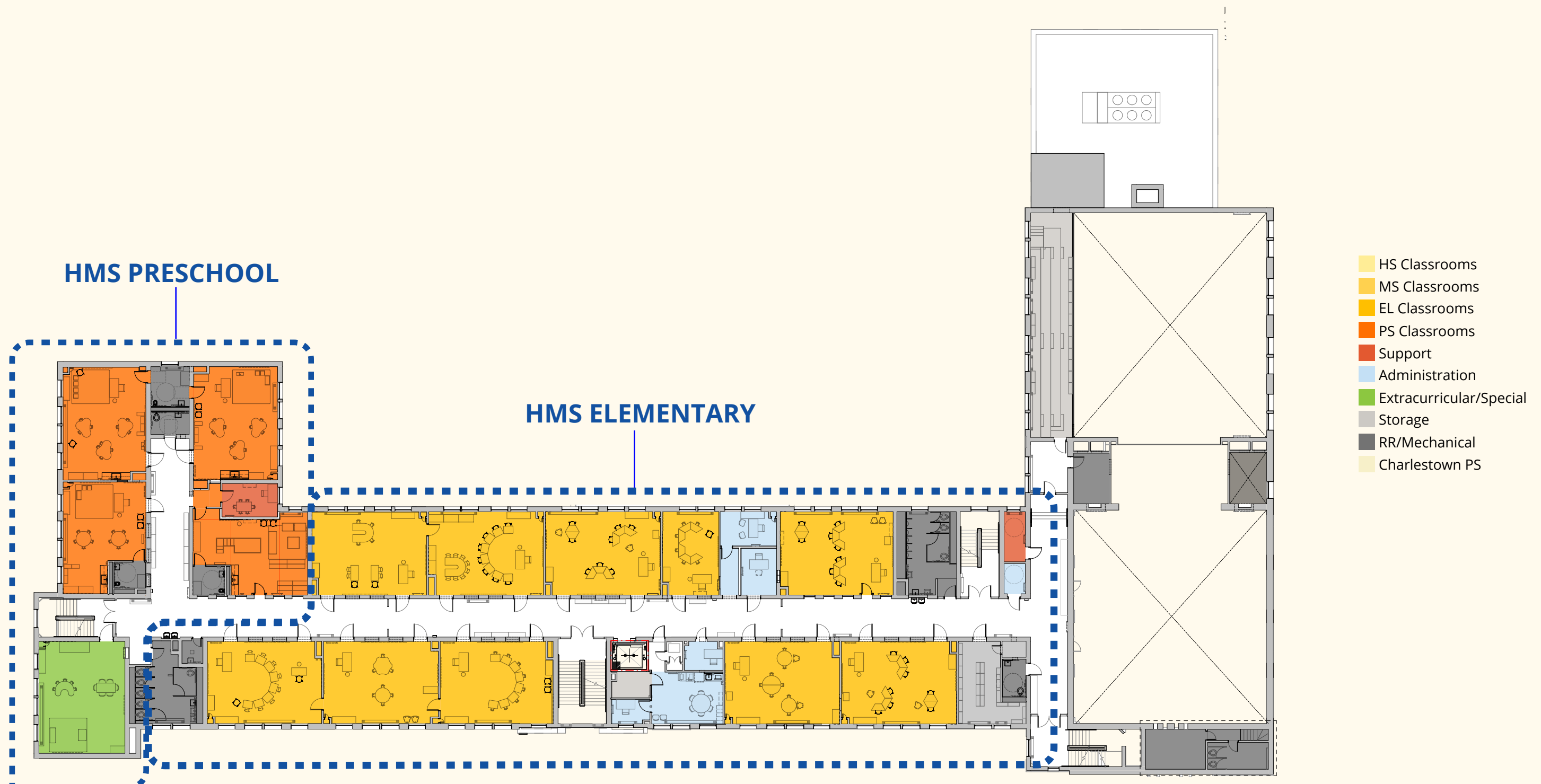


AUDITORIUM



CLASSROOMS

UPGRADES

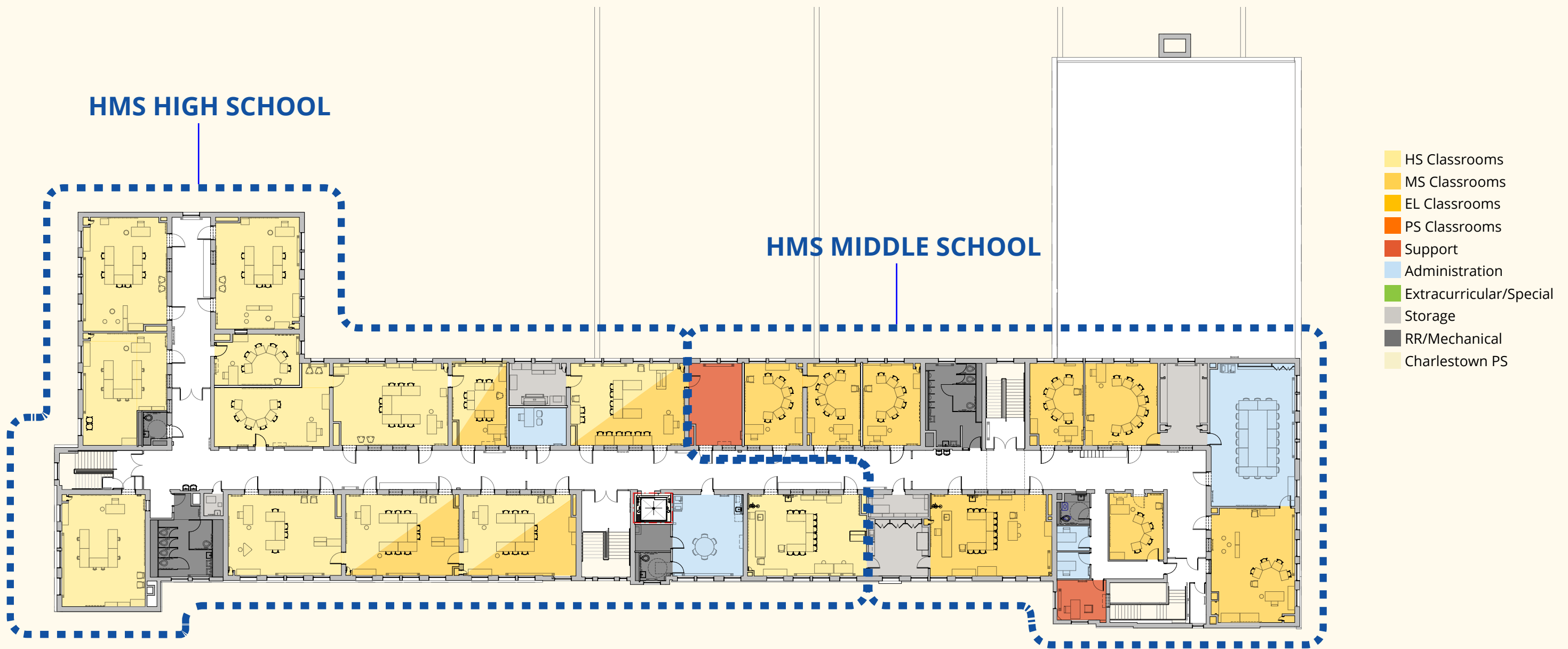


HMS PRESCHOOL

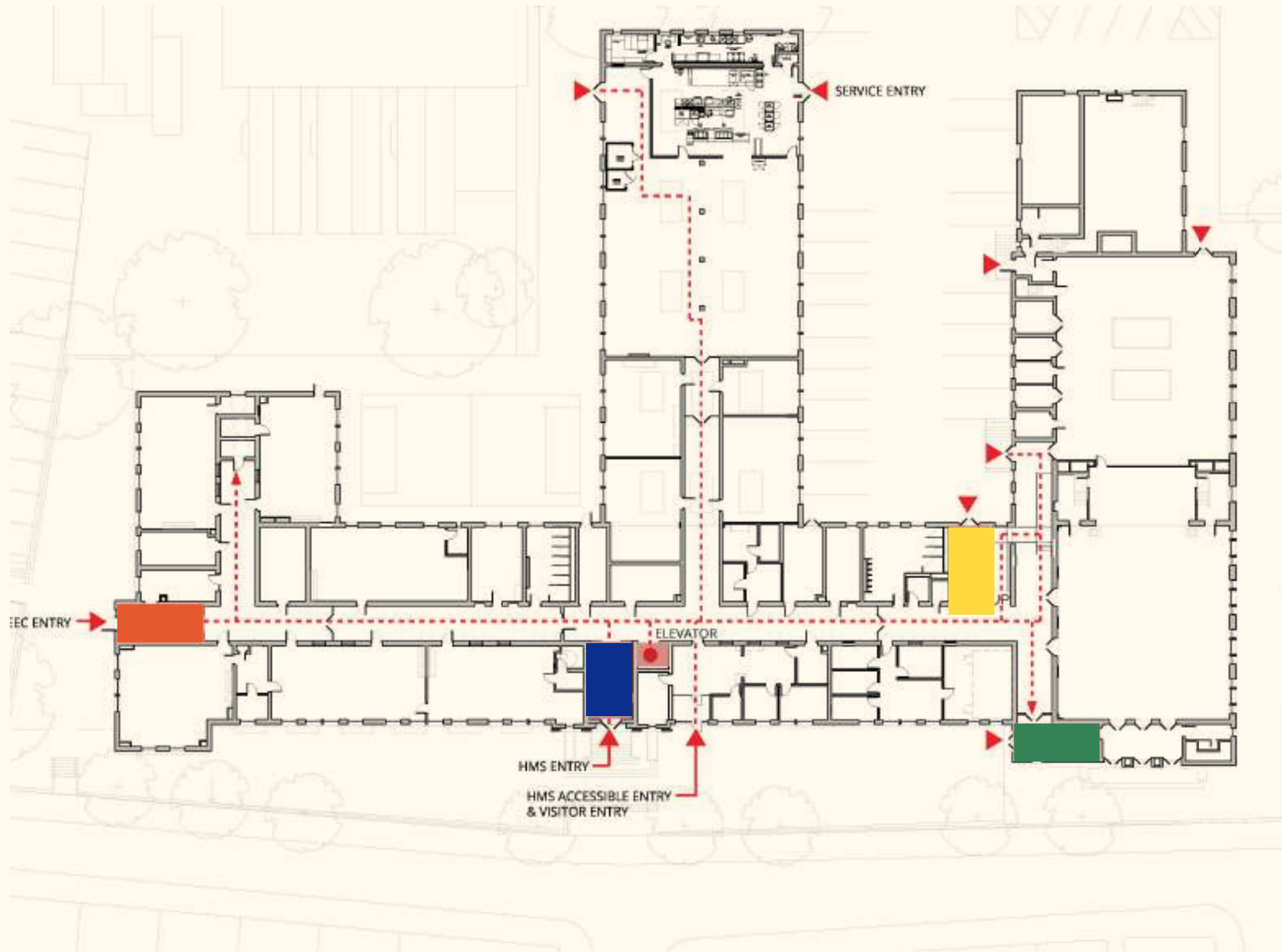
HMS ELEMENTARY

- HS Classrooms
- MS Classrooms
- EL Classrooms
- PS Classrooms
- Support
- Administration
- Extracurricular/Special
- Storage
- RR/Mechanical
- Charlestown PS

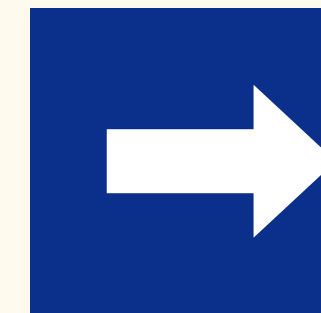
LEVEL 2



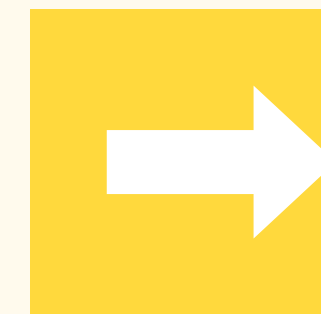
LEVEL 3



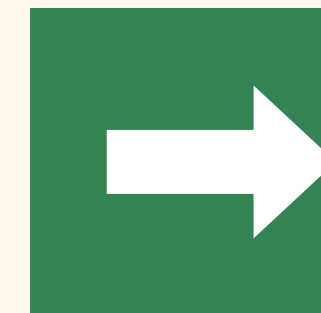
**STAIR A
CHARLESTOWN
PRE-K ENTRY**



**STAIR B
HMS MAIN**



STAIR C - PARKING



**STAIR D - GYM/
AUDITORIUM**

WAYFINDING GRAPHICS

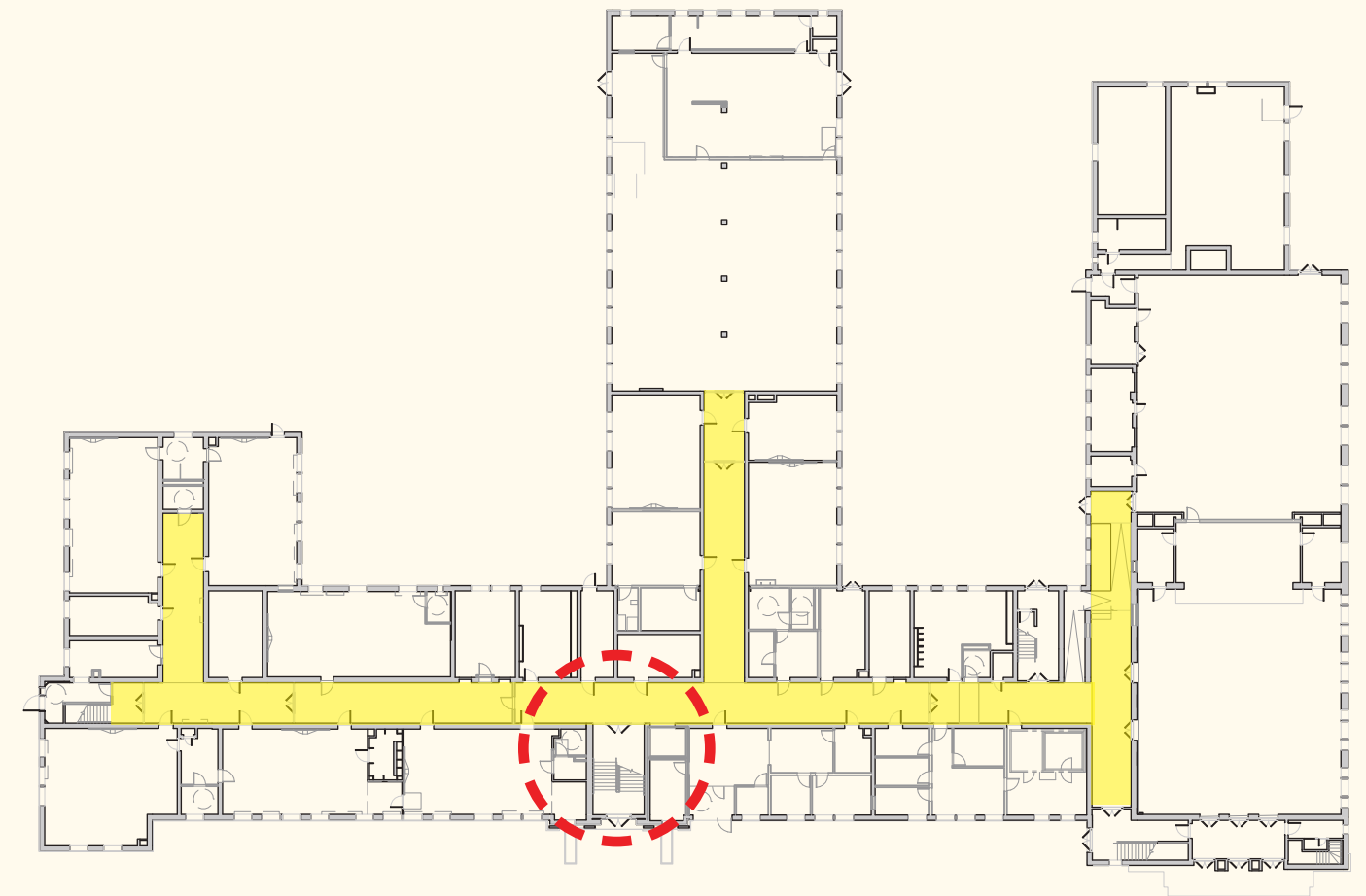


Existing

WAYFINDING GRAPHICS

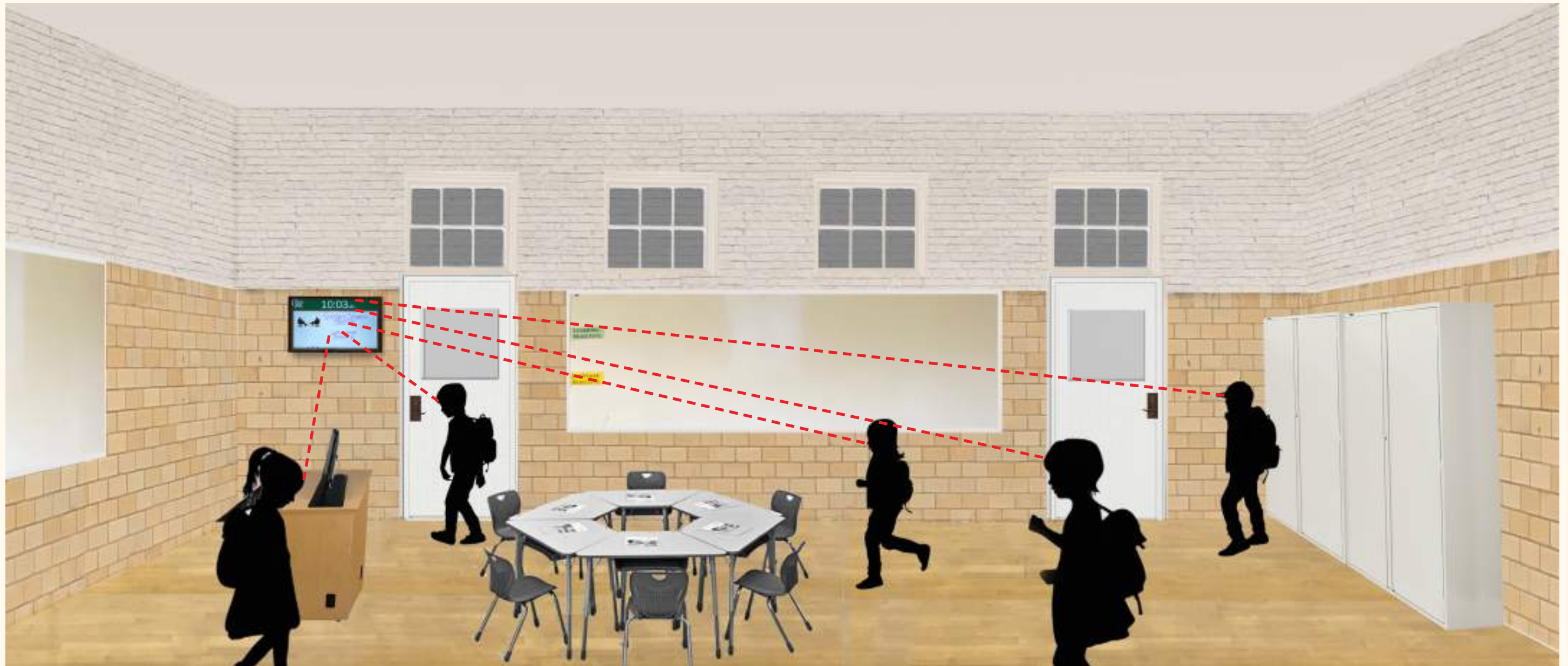


Proposed



CORRIDORS

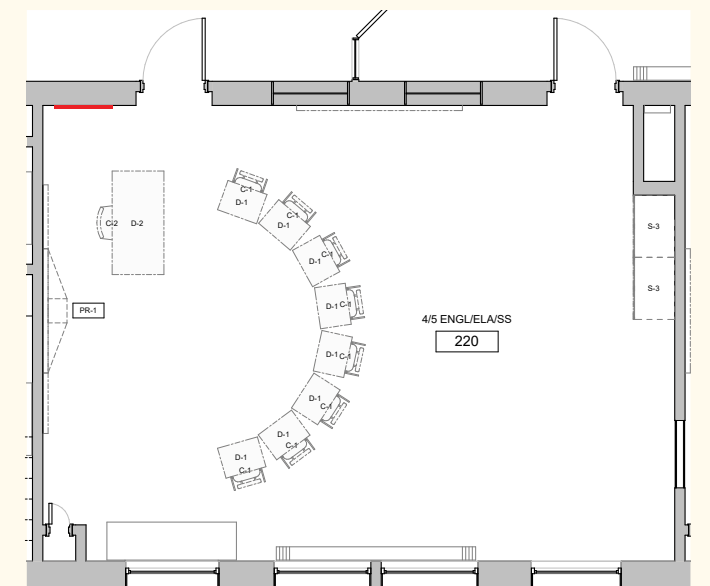
Visual PA + Wayfinding Colors



- Safety
- Security
- Information
- Communication
- Announcements

CLASSROOMS

Visual PA





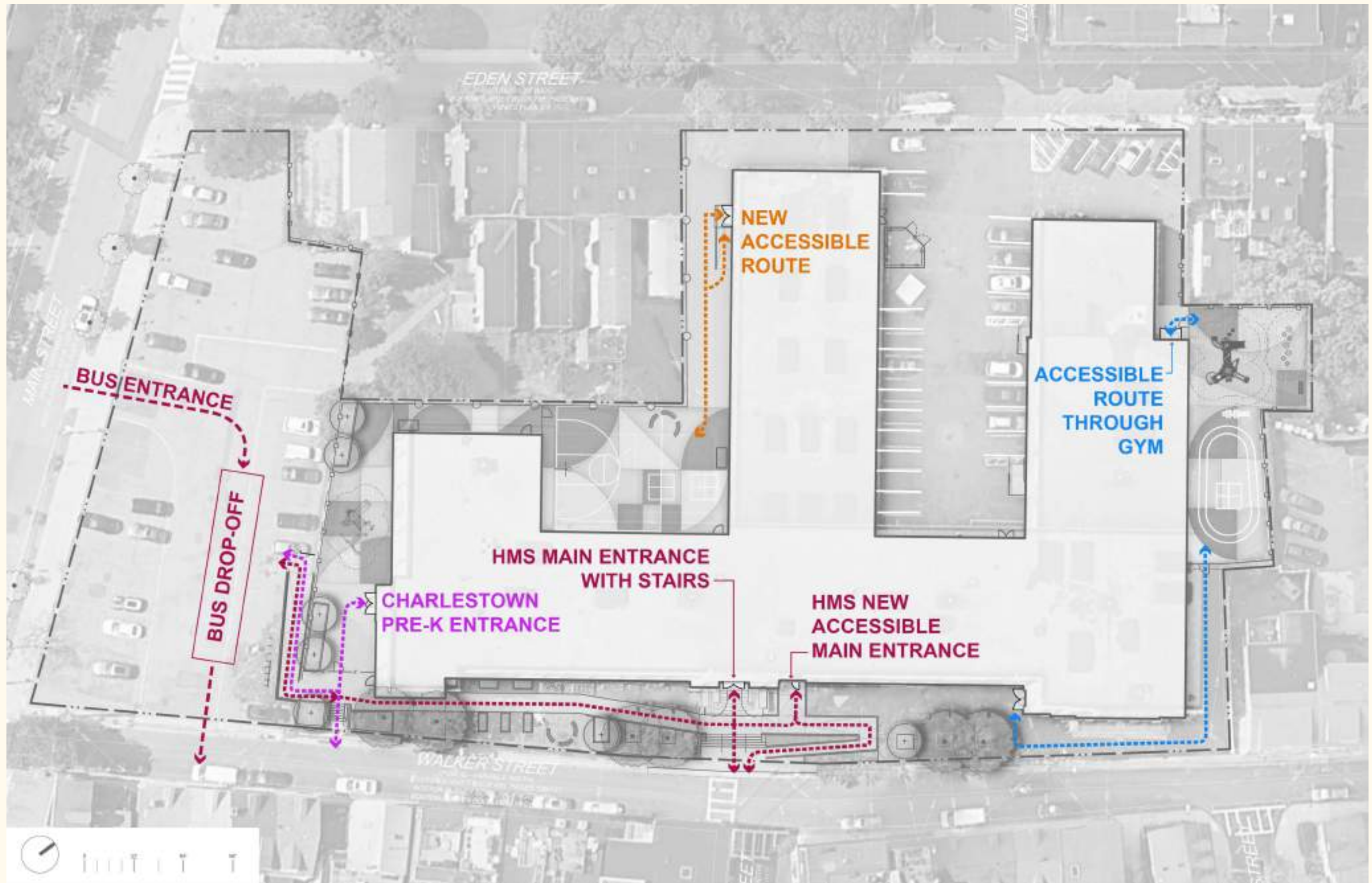
EDWARDS SITE PLAN



SITE PLAN



LANDSCAPE ZONES

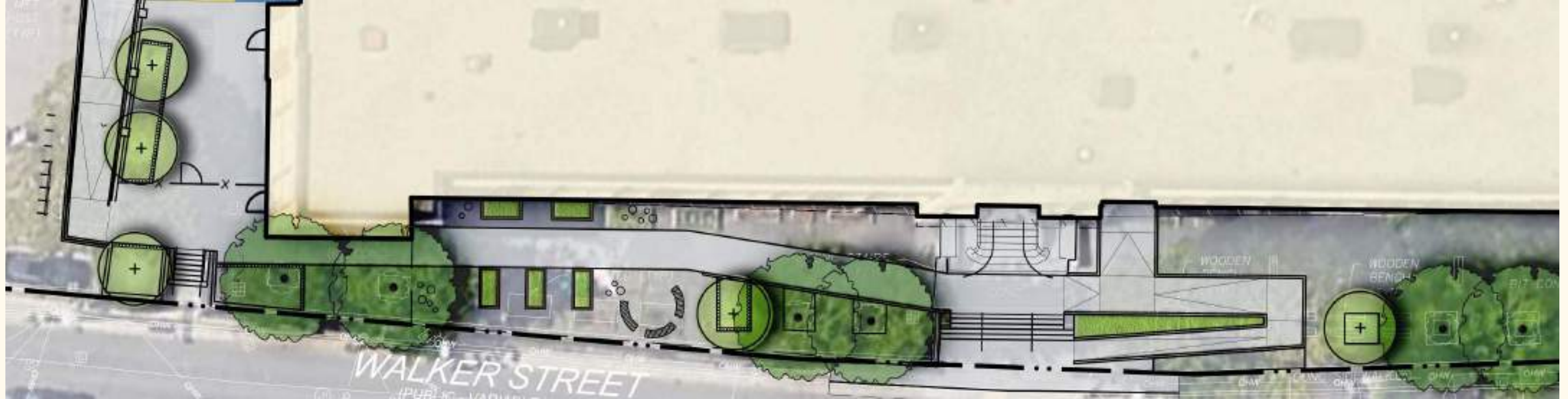


EXTERIOR CIRCULATION



EXISTING CONDITIONS

WELCOME MAT/OUTDOOR CLASSROOM



- Raised planting beds for student use and additional planted areas for greener entrance
- Sloped walks (less than 5% slope) to reach new accessible entrance
- Steel fixed benches arranged for social interaction and movable "stump" seats
- Stabilized crush stone surfacing in raised planter and seating zones

WELCOME MAT/OUTDOOR CLASSROOM



EXISTING CONDITIONS

HMS PRE-K PLAY AREA



- Play equipment is suitable for both all ages (2-5 & 5-12 years old)
- Balls and half-balls offer flexible play & socializing opportunity
- Colors to be selected by design team (images above do not represent final color choices)
- Poured-in-place rubber surfacing at equipment
- Asphalt with painted play graphics in flexible gross motor play area

HMS PRE-K PLAY AREA



EXISTING CONDITIONS

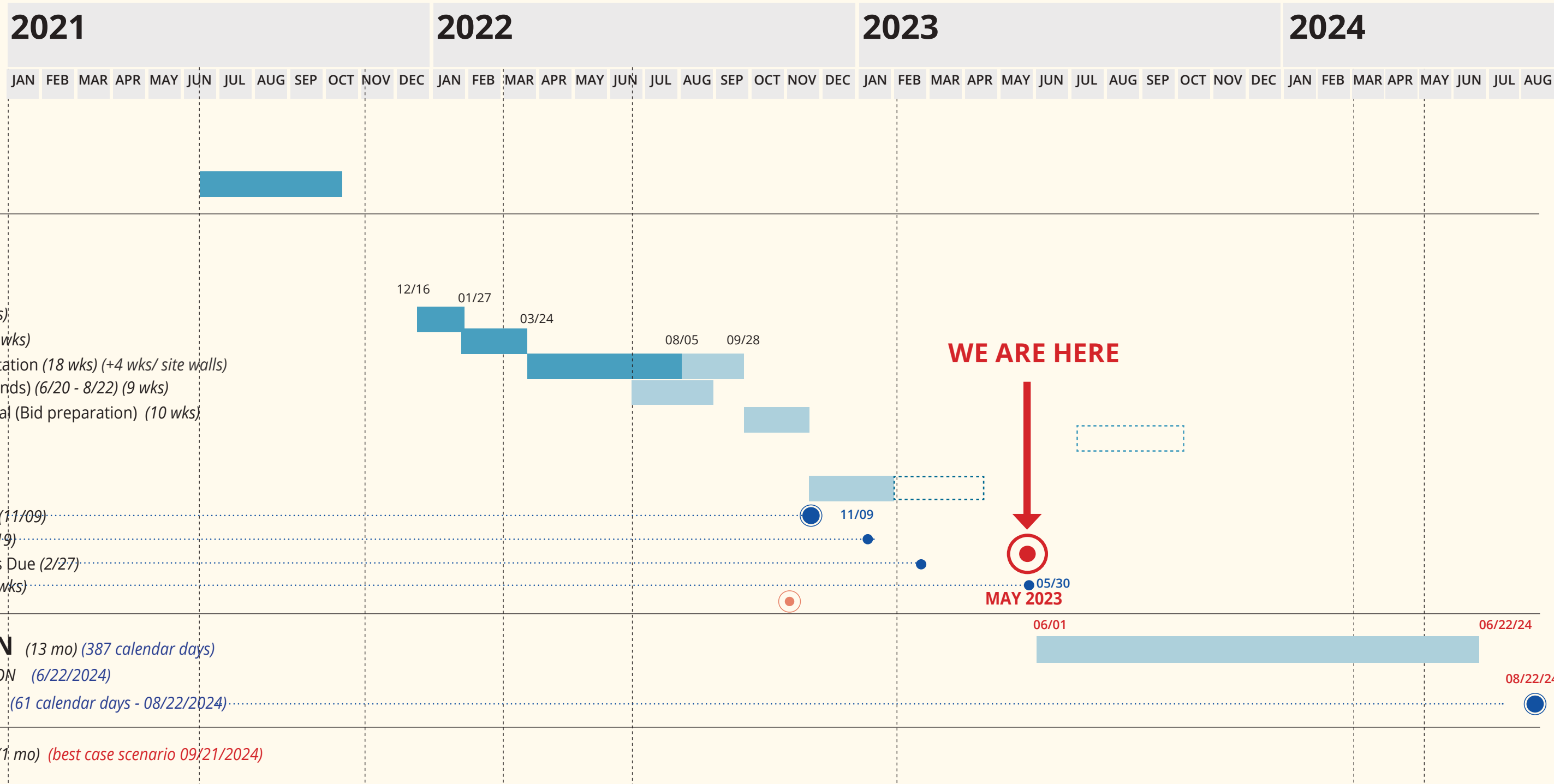
HMS MS/HS PLAY AREA



- Basketball court - resurfaced asphalt with painted graphics
- Painted graphics will also incorporate four square
- Lockable storage shed
- Steel benches arranged for social intersection

HMS MS/HS PLAY AREA

SCHEDULE



Construction Trailers

Primary Site Egress

No Parking in Main St. lot during construction

No Parking in Eden St. lot during construction

No Parking in alley during construction

Primary Site Egress

Construction Fence: surrounds all work zones when work begins and construction starts



CONSTRUCTION LOGISTICS PLAN

QUESTIONS & COMMENTS

CITY of BOSTON

