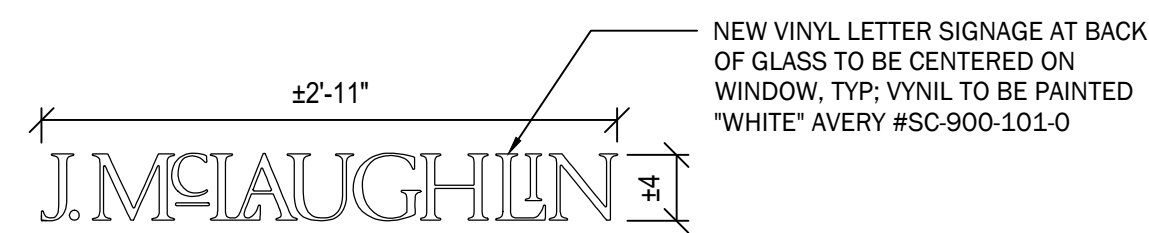


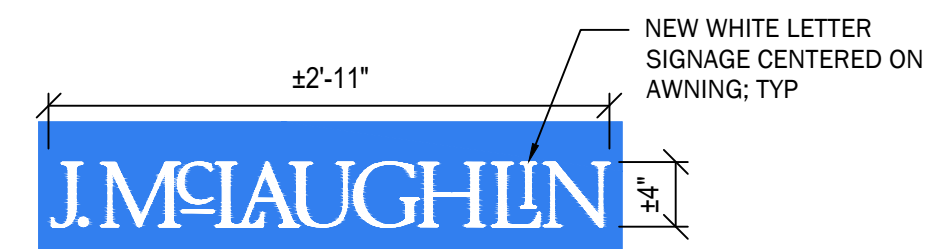
PROJECT NOTES:

MATERIAL SELECTIONS

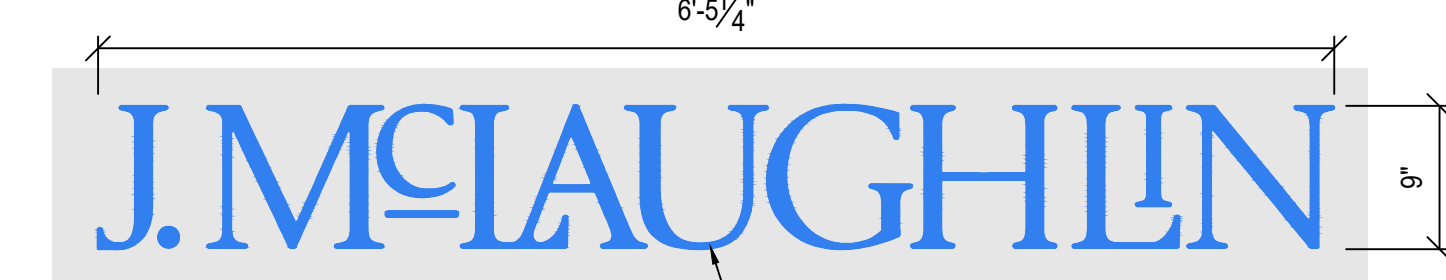
- COLOR FOR PIN LETTERS:  
CUSTOMRAL TO MATCH PMS 2727C
- BLADE SIGN PAINT COLORS:  
FINE PAINTS OF EUROPE:  
BACKGROUND: H03610  
LETTERS - WHITE
- AWNING SPECIFICATION:  
SUNBRELLA: COLOR: CAPRI  
REUSE EXISTING FRAME.
- PLANTER BOX:  
FINE PAINTS OF EUROPE: H03610
- COCOMAT SELECTION:  
SUPER NOP 52 - PRECISION INLAY  
LOGO - "NATURAL" BACKGROUND  
MONOGRAM: ROYAL BLUE
- VINYL FILM WINDOW SIGNS:  
TYPEFACE: HOEFLER - CUSTOM  
MOUNTING: GLASS-2ND SURFACE  
COLOR: AVERY #SC-900-101-0



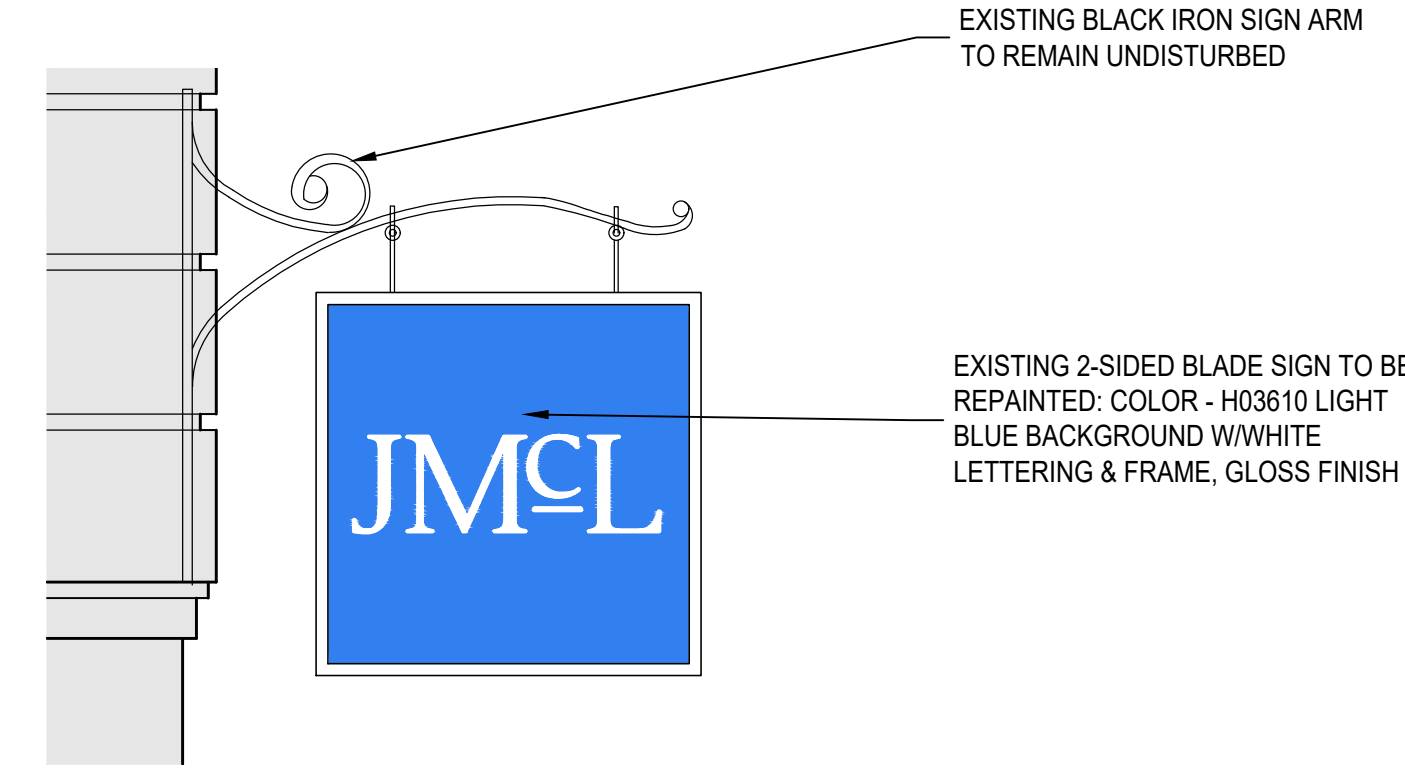
**S-3** WHITE J.McLAUGHLIN VINYL SIGNAGE  
SCALE: 1"=1'-0" QUANTITY: 5



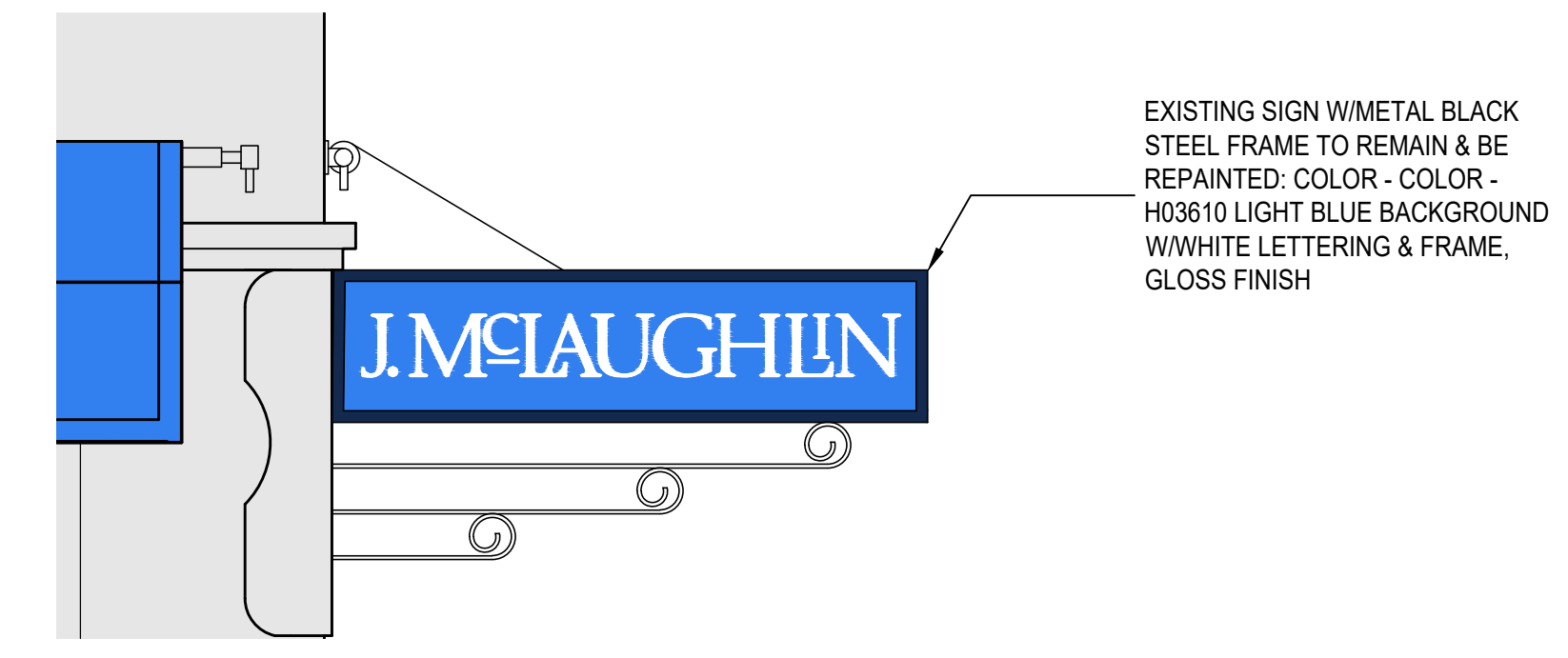
**S-2** AWNING SIGNAGE  
SCALE: 1"=1'-0" QUANTITY: 4



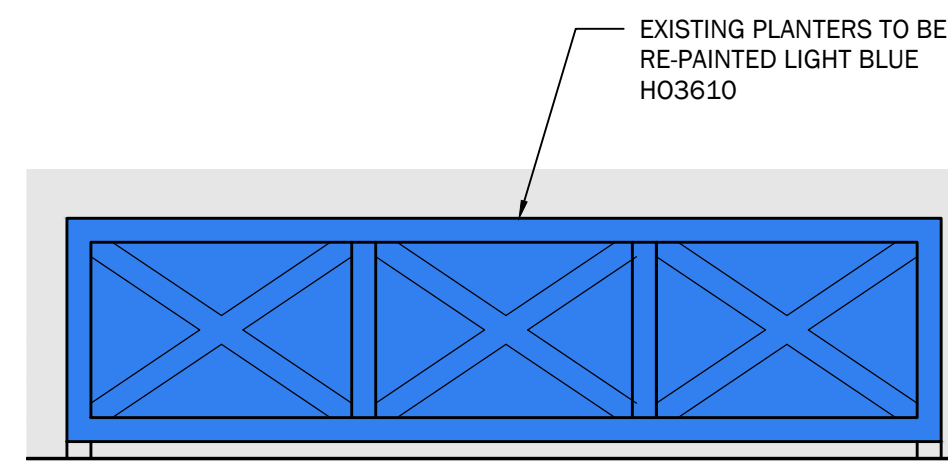
**S-1** PIN LETTER SIGNAGE  
SCALE: 1"=1'-0"



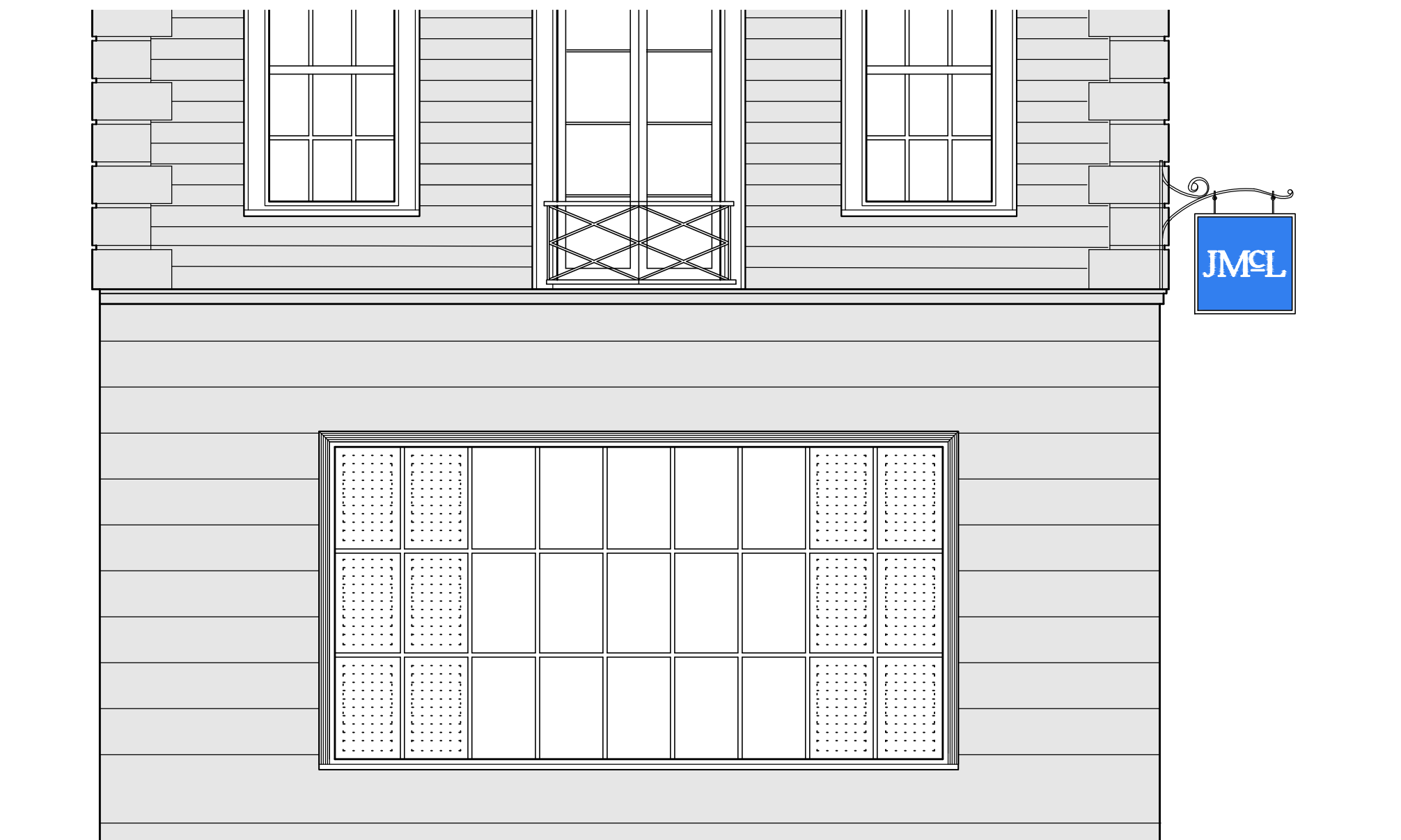
**5** EXISTING BLADE SIGN 2  
SCALE: 1"=1'-0"



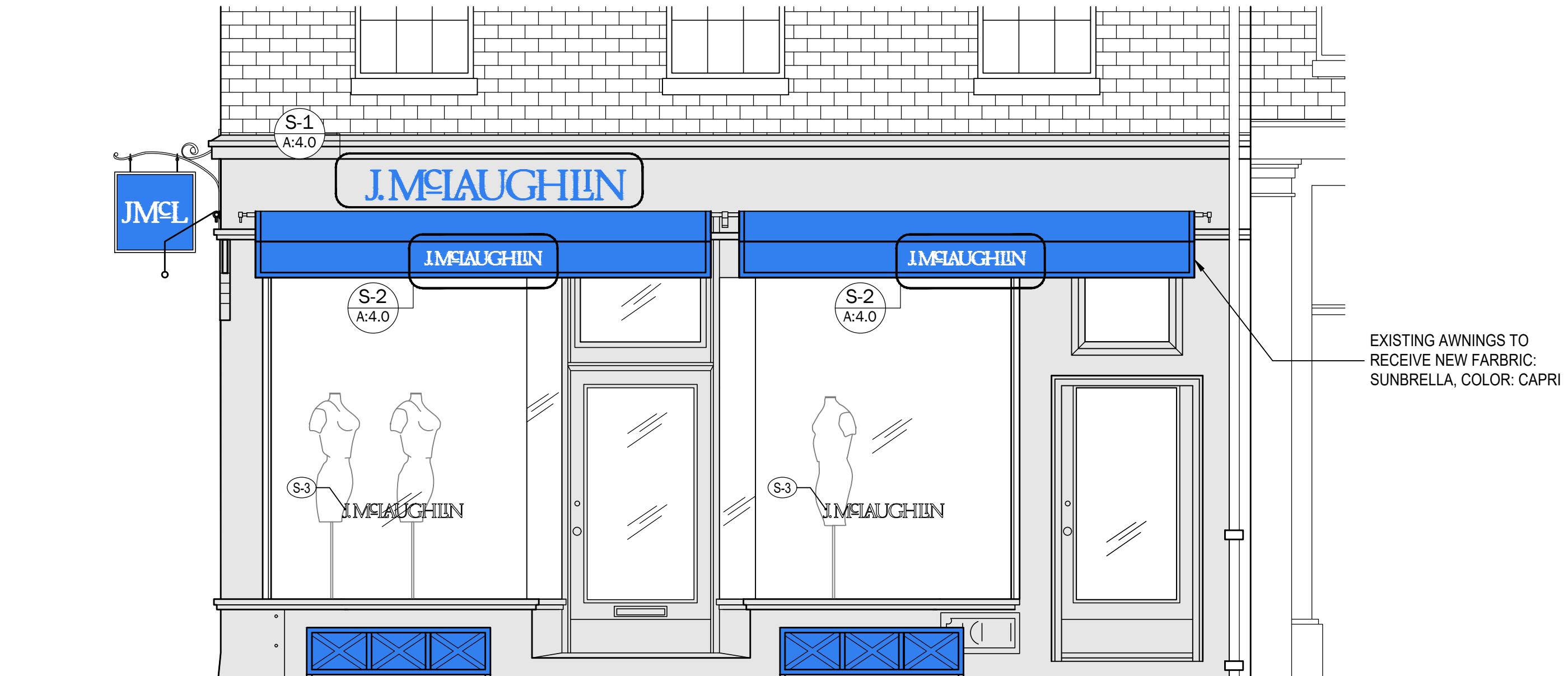
**4** EXISTING BLADE SIGN 1  
SCALE: 1"=1'-0"



**6** EXISTING PLANTERS PAINTED  
SCALE: 1"=1'-0"



**3** ELEVATION RIVER STREET  
SCALE: 3/8"=1'-0"



**2** ELEVATION CHARLES STREET  
SCALE: 3/8"=1'-0"



**1** ELEVATION CHESTNUT STREET  
SCALE: 3/8"=1'-0"



ISSUED FOR:

1	PROGRESS PLANS	07.10.2023
2	DRB REVIEW	08.10.2023

J. McLaughlin -  
BOSTON

34 CHARLES STREET  
BOSTON, MA 02108

JOB NUMBER: LRS-23

ISSUE DATE: 08.10.2023

SCALE: AS NOTED

DRAWN BY: CD

STAMP:

CD

SHEET TITLE:

EXTERIOR ELEVATION  
& SIGNAGE UPDATE

DRAWING #: **PROGRESS SET**

**A-4.0**