

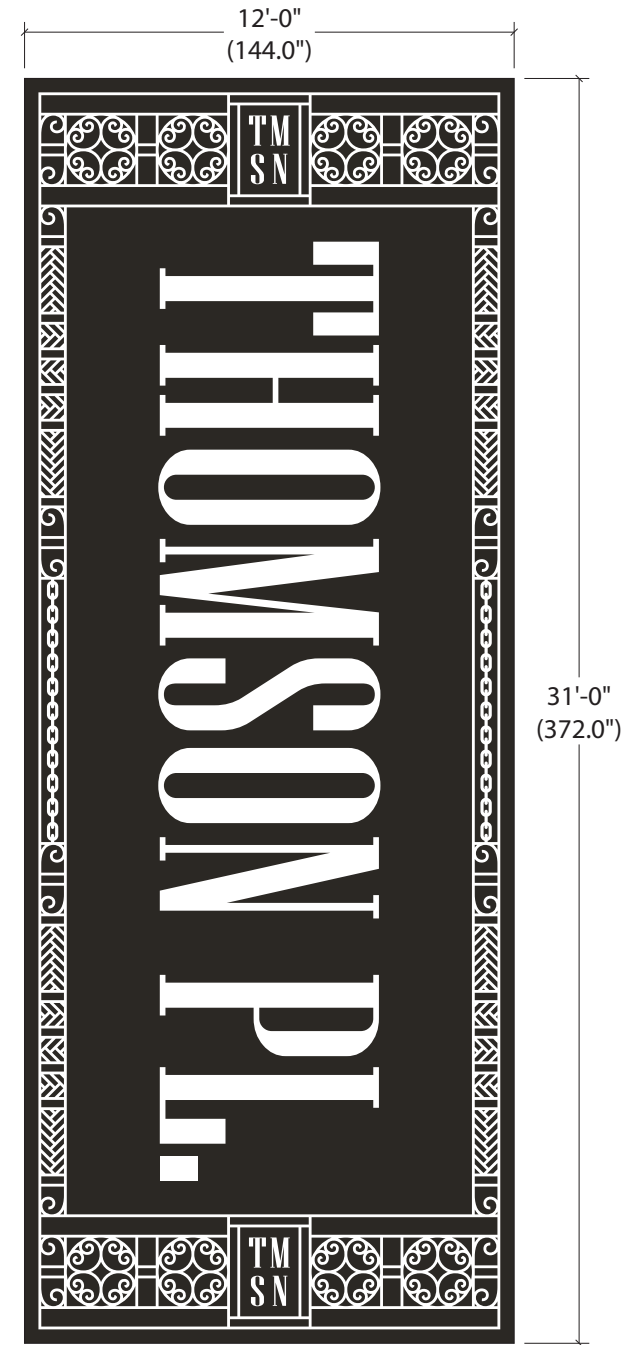
THOMSON PL.

FORT POINT

PRODUCTION DRAWINGS

Project: 0522_73 Bergmeyer - Thompson Place Seaport Signage

**BOSTON
BUILDING
WRAPS^{INC}**



General Notes

STREET E. SOUTH:
Brick Wrap w/Matte Lam

Client:

Hannah Friskey
hfriskey@bergmeyer.com

Senior Brand and
Environmental Designer

Bergmeyer
Boston | Los Angeles
51 Sleeper Street
Boston, MA 02210

617.542.1025 office
617.695.7799 direct
781.789.7637 mobile

www.bergmeyer.com

Project Location:

Thomson Place

Artist:

Derek B.

Revision #

① ② ③ ④ ⑤ ⑥ ⑦ ⑧ ⑨ ⑩

Date: 08/17/2023

Drawing No.

Scale:

E1

INSTALLATION IMAGES

Boston Building Wraps Inc Right to Authorship Credit. Client and/or Commissioner, hereafter referred to as User, and Boston Building Wraps Inc. hereafter referred to as BBWInc. agree that when asked, User must properly identify BBWInc. as the creator of artwork for future reproduction. Both parties agree that authorization to proceed with project whether per written estimate or verbal authorization will act as User's naming of BBWInc.; as vendor for said services. User does not have a proactive duty to display BBWInc.'s name together with Work, but User may not seek to mislead others that Work was created by anyone other than BBWInc. User request of BBWInc. to create project relevant drawings, sketches and/or artwork includes only the final, deliverable art, and not any preliminary Work or sketches. In the event of Termination. Either party may terminate the contract at any time through written request. The User shall upon termination pay BBWInc. all unpaid amounts due for Services completed prior to notice of termination.

Project: 0522_73 Bergmeyer - Thompson Place Seaport Signage

**BOSTON
BUILDING
WRAPS**_{INC.}

General Notes

BAR TACO WALL:
Brick Wrap w/Matte Lam

Client:

Hannah Friskey
hfriskey@bergmeyer.com

Senior Brand and
Environmental Designer

Bergmeyer
Boston | Los Angeles
51 Sleeper Street
Boston, MA 02210

617.542.1025 office
617.695.7799 direct
781.789.7637 mobile

www.bergmeyer.com

Project Location:

Thomson Place

Artist:

Derek B.

Revision #

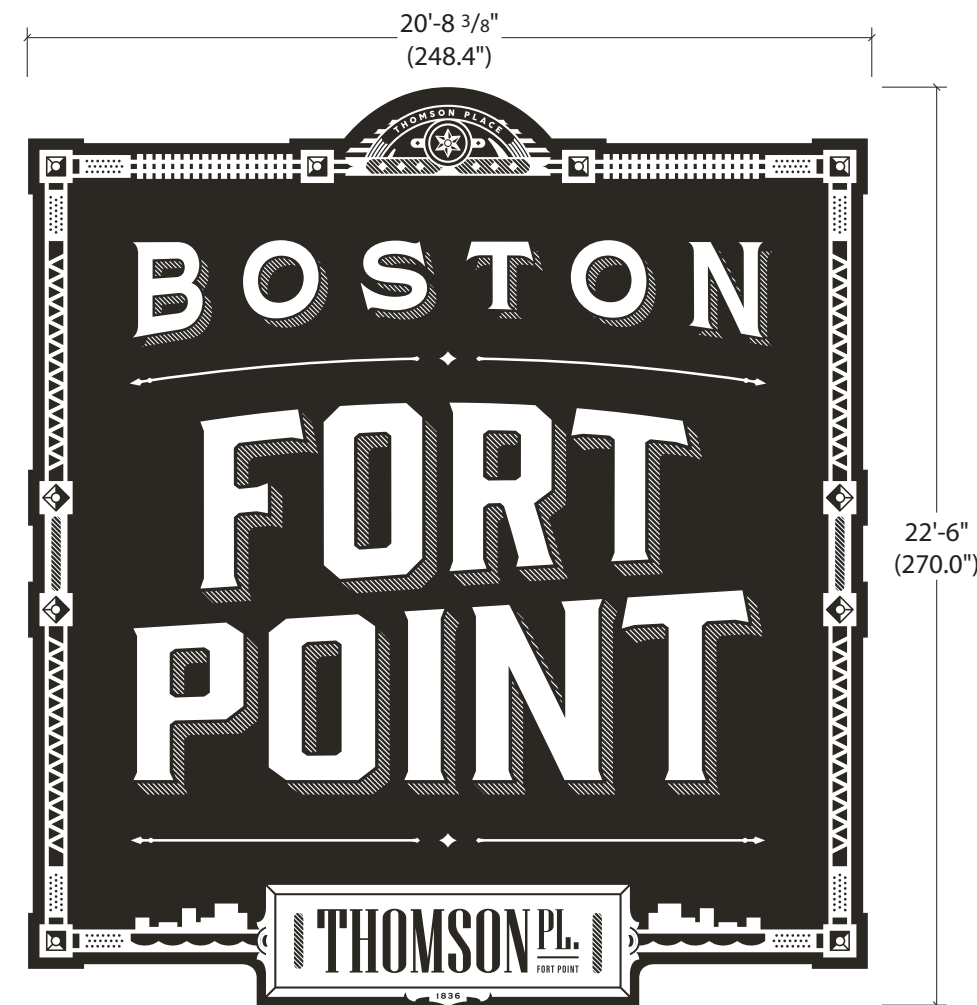
① ② ③ ④ ⑤ ⑥ ⑦ ⑧ ⑨ ⑩

Date: 08/17/2023

Drawing No.

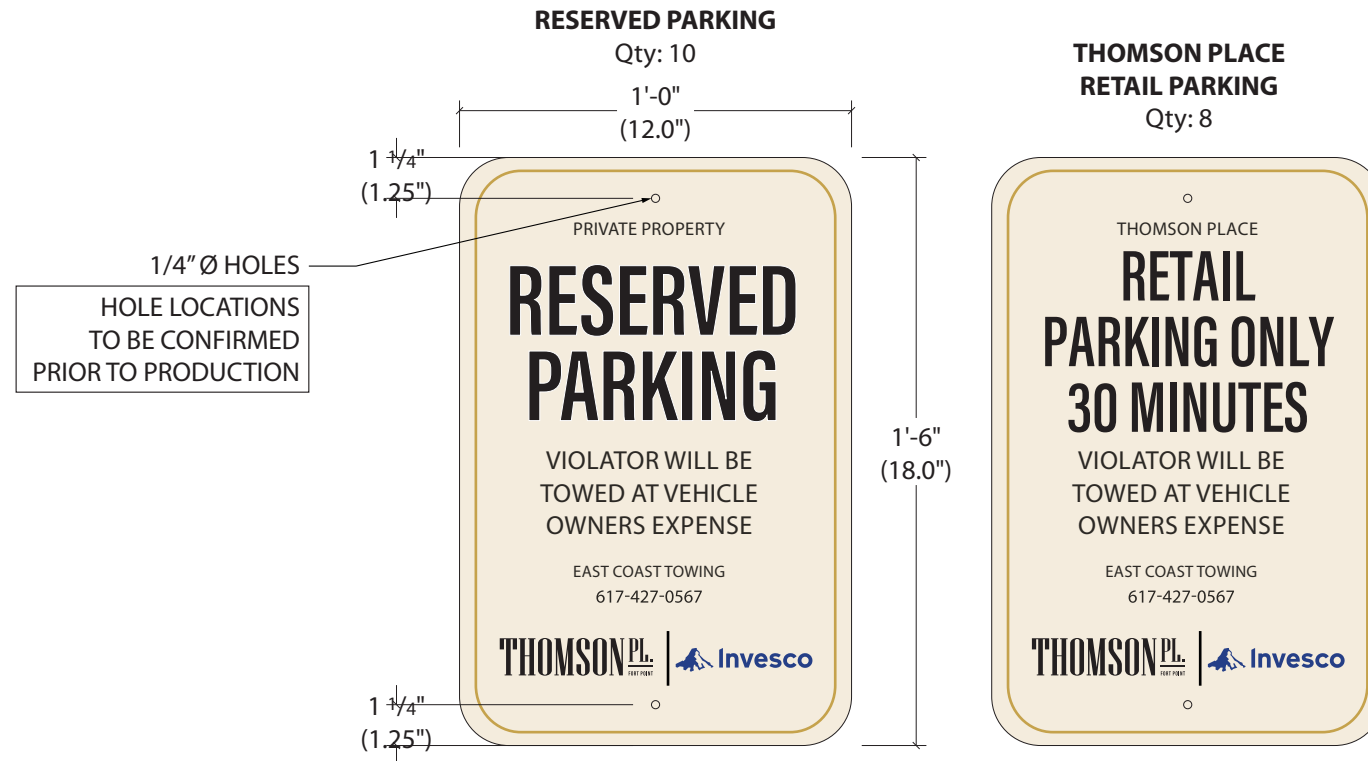
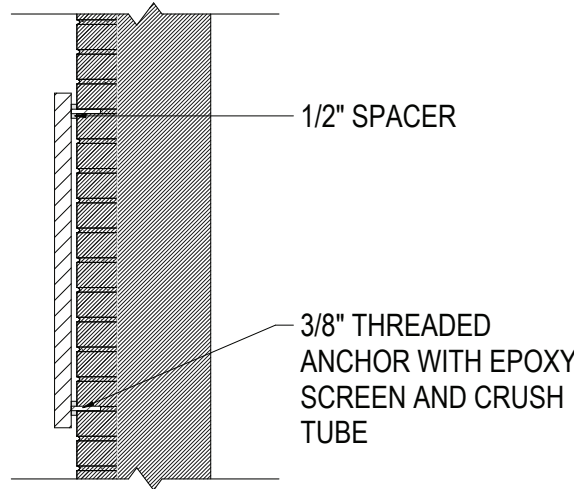
Scale:

B1

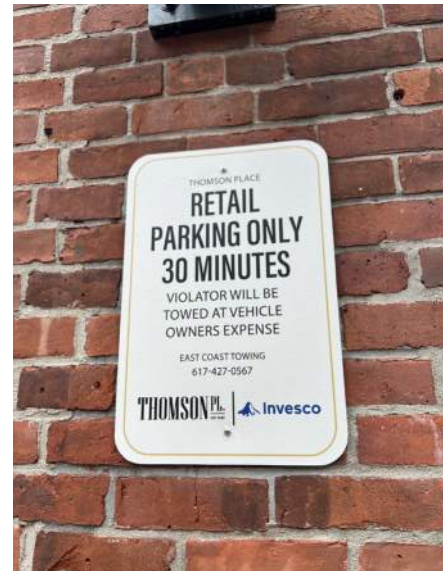


INSTALLATION IMAGES

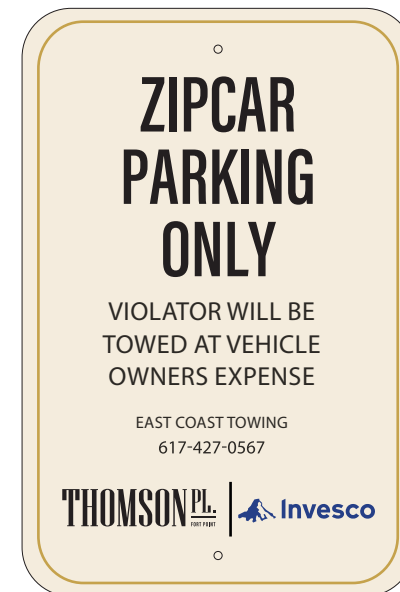
Project: 0522_73 Bergmeyer - Thompson Place Seaport Signage



Existing



Installation Image



General Notes

PARKING SIGNS:

SAV w/Matte Lam
Applied to DiBond

Qty: 21

Client:

Hannah Friskey
hfriskey@bergmeyer.com

Senior Brand and
Environmental Designer

Bergmeyer
Boston | Los Angeles
51 Sleeper Street
Boston, MA 02210

617.542.1025 office
617.695.7799 direct
781.789.7637 mobile

www.bergmeyer.com

Project Location:

Thomson Place

Artist:

Derek B.

Revision

① ② ③ ④ ⑤ ⑥ ⑦ ⑧ ⑨ ⑩

Date: 08/17/2023

Drawing No.

Scale:

P1

Project: 0522_73 Bergmeyer - Thompson Place Seaport Signage



General Notes

OUTRIGGERS

13oz Matte Vinyl Banner Webbing On Sides

4" Pole Pockets Top & Bottom

DOUBLE-SIDED

Client:

Hannah Friskey
hfriskey@bergmeyer.com

Senior Brand and
Environmental Designer

Bergmeyer
Boston | Los Angeles
51 Sleeper Street
Boston, MA 02210

617.542.1025 office
617.695.7799 direct
781.789.7637 mobile

www.bergmeyer.com

Project Location:

Thomson Place

Artist:

Derek B.

Revision

① ② ③ ④ ⑤ ⑥ ⑦ ⑧ ⑨ ⑩

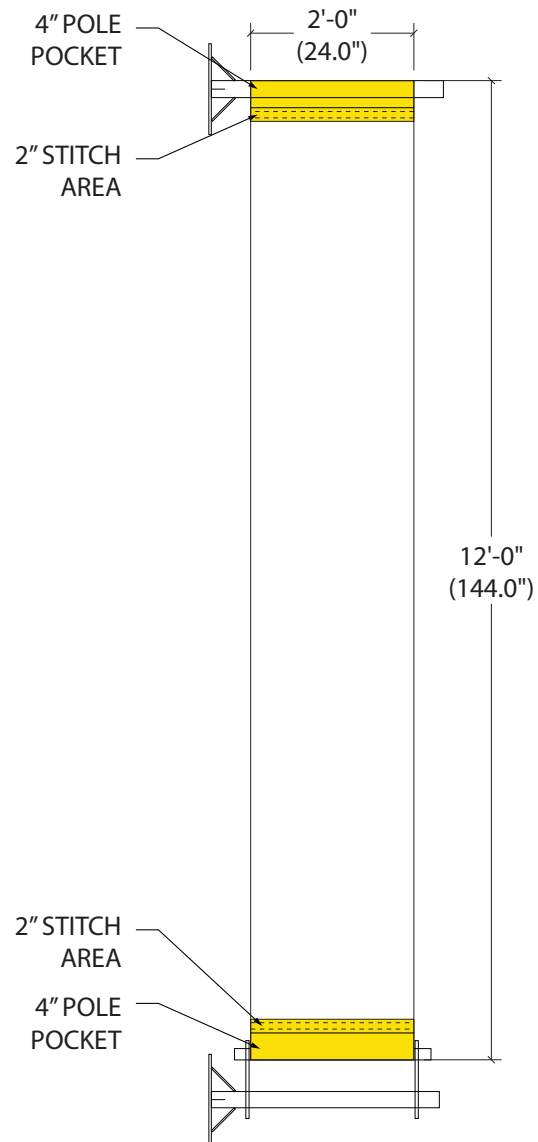
Date: 08/17/2023

Drawing No.

Scale:

OR1

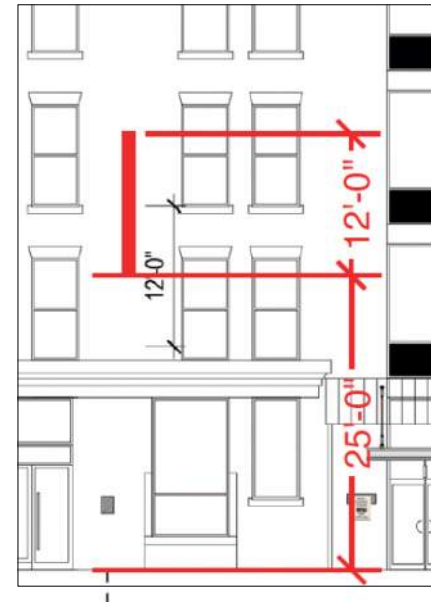
DOUBLE-SIDED



Qty: 1 each of 5

Side 1

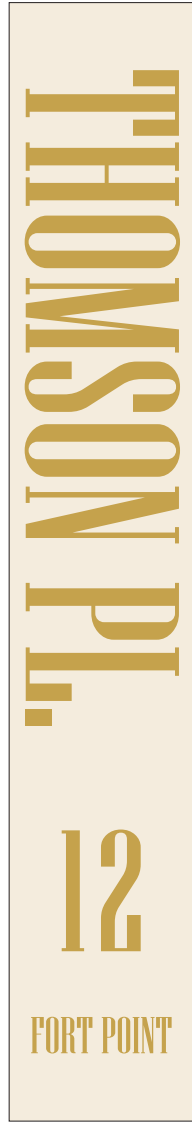

Side 2



Mock-up Installation Images

LOCATION
12

Side 1 Side 2

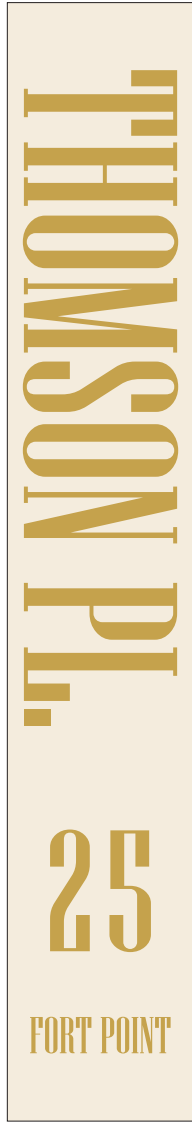



THOMSON PL.
12
FORT POINT

THOMSON PL.
12
FORT POINT

LOCATION
25

Side 1 Side 2





THOMSON PL.
25
FORT POINT

THOMSON PL.
25
FORT POINT

LOCATION
26

Side 1 Side 2

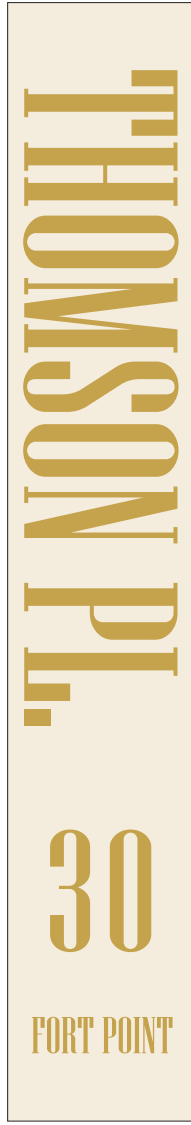



THOMSON PL.
26
FORT POINT

THOMSON PL.
26
FORT POINT

LOCATION
30

Side 1 Side 2



THOMSON PL.
30
FORT POINT

THOMSON PL.
30
FORT POINT

LOCATION
35

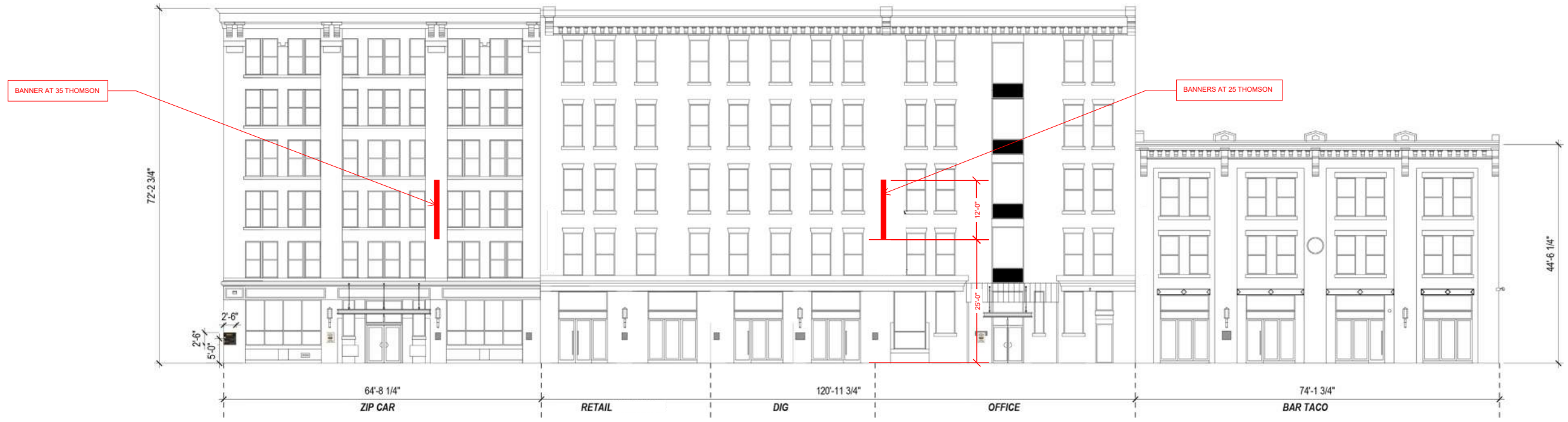
Side 1 Side 2



THOMSON PL.
35
FORT POINT

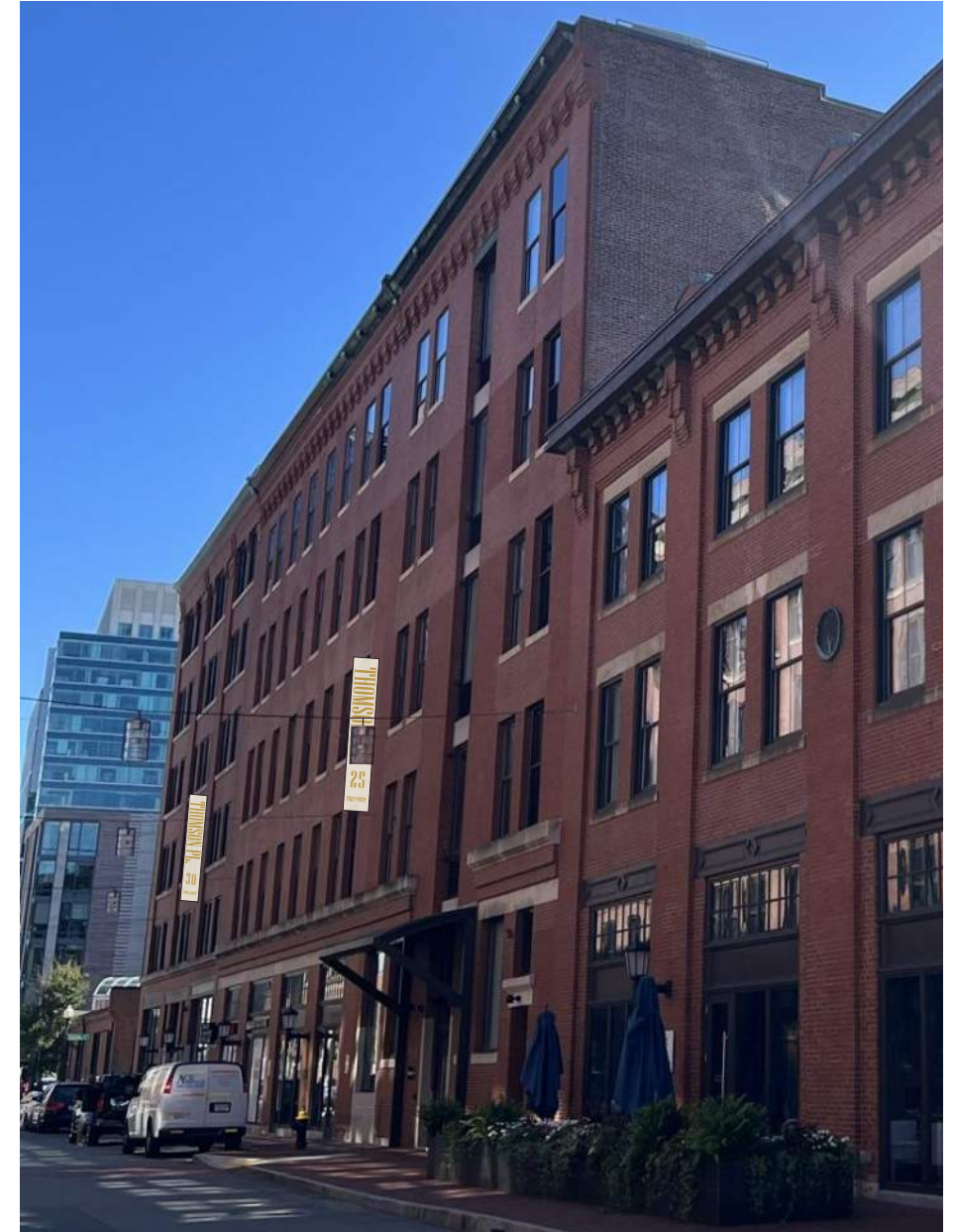
THOMSON PL.
35
FORT POINT

BANNER PROPOSED LOCATIONS



BANNER PROPOSED LOCATIONS

5 TOTAL



LIGHTING

SPOT LIGHTING

Small scale, inconspicuous lighting proposed on the Thomson Place branded murals to enhance the experience at night. Mockup proved that a limited amount of lighting can be installed and will be installed on a plinth and aimed to remove hot spots. Lighting mounted below the sign to eliminate the possibility to look up into the light.



SIGNAGE LIGHTING MOCKUP

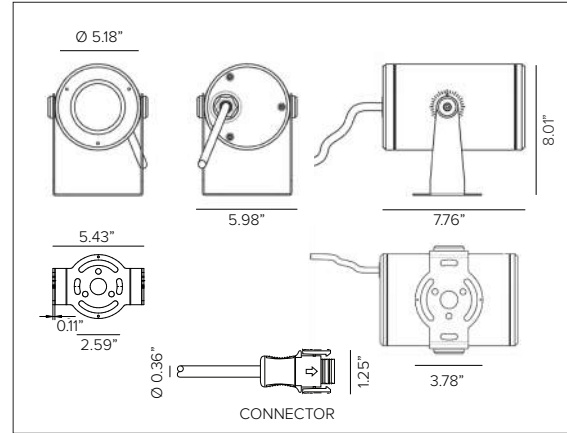
Proposed: Uplighting brick wrap murals.

DART ROUND MEDIUM

Professional Adjustable Projector Floodlight



DART MEDIUM ROUND shown in Ferrite Dark Grey finish.



CONCEPT

Small footprint fully adjustable LED flood light projector.

MECHANICAL CHARACTERISTICS

Housing	8.01"H x 5.98"W x 7.76"D
Materials	Die-cast aluminum powder coated body and joints for maximum heat dissipation.
Finish	Textured finish. ● Ferrite Dark Grey ● Heritage Brown ● Bronze ● Black ● White ● Sandstone Grey
Power Connection	Cabled with 10ft SJ00W 16-6 cable and DSMT anti-wicking quick disconnect.
Functionality	Adjustable up to ±60° on the horizontal plane with slotted mounting base and +90°/-45° on the vertical plane with aim locking set screw.
Mounting	Fixture can be installed directly to mounting surface or used with optional mounting installation accessories.
Weight	7lbs
Protection	IP66
Impact	IK10

CERTIFICATIONS

cULus Wet Location Listed.
Tested in accordance with LM-79-08.
Compliant for California installations.
IEC 62471
RoHS3 EU 215/863

WARRANTY

5 year limited warranty

SUSTAINABILITY

Luminaire designed for disposal/recycling at end-of-life. Replaceable LED light source and control gear by a Targetti technician.

ELECTRICAL CHARACTERISTICS

Power Supply	Integrated 4/1 smart driver (Non-Dimmable / 0-10V / Reverse Phase / Forward Phase).
Wattage	8W (NSP) / 33W nominal (SP / FL / MWFL / WFL)
Voltage	Universal Voltage 120-277V AC 50/60Hz

SOURCE

NSP optic uses high efficiency LED Emitter. SP / FL / MWFL / WFL optics use high efficiency LED Chip on Board.

TM30	CCT (Nominal)	CRI	Rf	Rg	MR	SDCM
	2700K	81	80	97	2	2
	3000K	82	82	97	2	2
	3500K	82	81	97	2	2
	4000K	82	81	97	2	2
	5000K	82	81	97	2	2

Ra90 available upon request

OPTIC

Optical system is dependent on beam angle. NSP version comprised of methacrylate lenses. SP and FL versions comprised with a hybrid optic system. MWFL and WFL versions comprised of precision optics with convex reflective anodized aluminum facets.

Beam	NSP 5°	SP 14°	FL 36°	MWFL 46°	WFL 56°
Delivered Lumens	3000K 518Lm	2325Lm	2042Lm	4108Lm	4148Lm
	4000K 558Lm	2344Lm	2059Lm	4206Lm	4247Lm

For 2700K lumen values use multiplier of 0.96 from 3000K. For 3500K lumen values use multiplier of 1.02 from 3000K. For 5000K lumen values use multiplier of 1.02 from 4000K.

Efficacy	118Lm/W max. Refer to photometric graphs for specific values.
Lifetime	NSP: L96/B10 30,000hrs / L95/B10 50,000hrs at max TA +25°C SP / FL: L89/B10 30,000hrs / L85/B10 50,000hrs / L78/B10 80,000hrs / L74/B10 100,000hrs at max TA +25°C MWFL / WFL: L91/B10 30,000hrs / L88/B10 50,000hrs / L84/B10 80,000hrs / L81/B10 100,000hrs at max TA +25°C
Photobiological Classification	Low risk safety RG1

DART ROUND MEDIUM

SPECIFICATION INFORMATION



1 - PRODUCT CODE	2 - DRIVER	3 - FINISH	4 - WATTAGE	5 - OPTIC	6 - KELVIN
DRM — DART ROUND MEDIUM	41 — 4/1 Smart Dimming (Non-Dimming / 0-10V / Reverse Phase / Forward Phase)	FE — Ferrite Dark Grey HB — Heritage Brown BZ — Bronze WT — White BT — Black SG — Sandstone Grey RAL — Custom RAL	L1^a — 8W L2^c — 33W	NS — NSP 5° SP — SP 14° FL — FL 36° MW — MWFL 46° WF — WFL 56°	27 — 2700K 30 — 3000K 35 — 3500K 40 — 4000K 50 — 5000K

7 - OPTIONAL	8 - EXTERNAL OPTICAL ACCESSORIES	9 - INSTALLATION ACCESSORIES
MG^a — Marine Grade	Blade of Light Linear Spread Lens <i>See section for details</i> Anti-glare Louver <i>See section for details</i> Asymmetric Snoot <i>See section for details</i> Symmetric Snoot <i>See section for details</i> Symmetric Super Snoot <i>See section for details</i>	Rotational Bracket <i>See section for details</i> Earth spike <i>See section for details</i> Back Plate <i>See section for details</i>

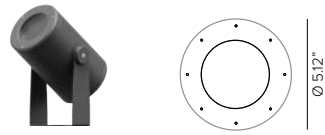
^a Marine Grade is recommended for use in environments with occasional exposure to salt air, reclaimed water, fertilizers, chemical cleaners, or frequent pressure washing (steam) cleaning. Fixture housing complete with marine grade cathaphoresis suitable for use in marine grade environments. Not to be in direct contact with salt or corrosive agents for extended periods of time.

^b 8W available with NSP only.

^c 33W available with SP, FL, MWFL and WFL only.

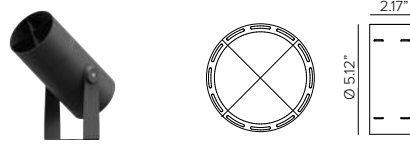
DART ROUND MEDIUM

8 - EXTERNAL OPTICAL ACCESSORIES (OPTIONAL)



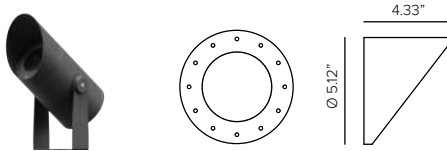
Blade Light Linear Spread Lens. PMMA holographic filter.

Part No. **1E4006 (*)**



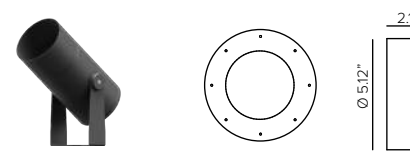
Anti glare louver with removable baffles for different levels of glare control. Powder coat stainless steel. Cutoff 114°. **Not compatible with 1E4007, 1E4008 or 1E4058.**

Part No. **1E4009 (*)**



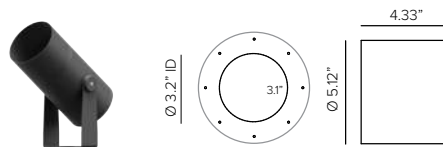
Asymmetric snoot. Powder coated stainless steel. Cutoff 52°. **Not compatible with 1E4009, 1E4008 or 1E4058.**

Part No. **1E4007 (*)**



Symmetric snoot. Powder coated stainless steel. Cutoff 102°. **Not compatible with 1E4007, 1E4009 or 1E4058.**

Part No. **1E4008 (*)**



Symmetric super snoot. Powder coated stainless steel. Cutoff 44°. **Not compatible with 1E4007, 1E4008 or 1E4009.**

Part No. **1E4058 (*)**

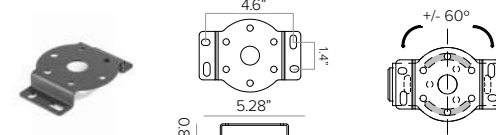
- Ferrite Dark Grey (Default)
- Heritage Brown (HB)*
- Bronze (BZ)*
- White (WT)*
- Black (BT)*
- Sandstone Grey (SG)*

*Add suffix to end of number to identify finish (EX. 1E4006HB)

DART ROUND MEDIUM

9 - INSTALLATION ACCESSORIES (OPTIONAL)

MAXIMUM OF ONE ACCESSORY PER FIXTURE



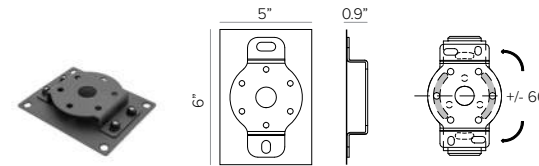
Rotational bracket for surface installation. Powder coated stainless steel.

Part No. **1E3026 (*)**



Earth spike. Powder coated stainless steel.

Part No. **1E3028 (*)**



Back plate with rotational bracket for wall mount installation. Powder coated stainless steel with Neoprene black foam. Included with 1E3026 and factory attached Stainless Steel black oxide bolts and locking nuts.

Part No. **1US3026 (*)**

- Ferrite Dark Grey (Default)
- Heritage Brown (HB)*
- Bronze (BZ)*
- White (WT)*
- Black (BT)*
- Sandstone Grey (SG)*

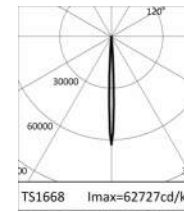
*Add suffix to end of number to identify finish (EX. 1E3026HB)

DART ROUND MEDIUM

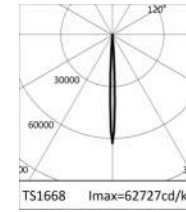
PHOTOMETRY

NARROW SPOT

3000K		H(m)	D(m)	Emax(lx)
Ra80			5°	
Fixture Power	8W	1	0.09	43282
Source Flux	690lm	2	0.17	10820
Fixture Flux	518lm	3	0.26	4809
Efficacy	65lm/W	4	0.34	2705
TS1668	Imax=62727cd/klm	Imax	43282cd	5 0.43 1731



4000K		H(m)	D(m)	Emax(lx)
Ra80			5°	
Fixture Power	8W	1	0.09	46669
Source Flux	744lm	2	0.17	11667
Fixture Flux	558lm	3	0.26	5185
Efficacy	70lm/W	4	0.34	2917
TS1668	Imax=62727cd/klm	Imax	46669cd	5 0.43 1867



SPOT

3000K		H(m)	D(m)	Emax(lx)
Ra80			14°	
Fixture Power	28W	1	0.25	26118
Source Flux	3687lm	2	0.51	6530
Fixture Flux	2325lm	3	0.76	2902
Efficacy	84lm/W	4	1.02	1632
TS1669	Imax=7084cd/klm	Imax	26118cd	5 1.27 1045



4000K		H(m)	D(m)	Emax(lx)
Ra80			14°	
Fixture Power	28W	1	0.25	26331
Source Flux	3717lm	2	0.51	6583
Fixture Flux	2344lm	3	0.76	2926
Efficacy	84lm/W	4	1.02	1646
TS1669	Imax=7084cd/klm	Imax	26331cd	5 1.27 1053

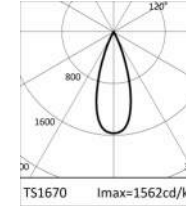


FLOOD

3000K		H(m)	D(m)	Emax(lx)
Ra80			36°	
Fixture Power	28W	1	0.64	5760
Source Flux	3687lm	2	1.28	1440
Fixture Flux	2042lm	3	1.92	640
Efficacy	73lm/W	4	2.56	360
TS1670	Imax=1562cd/klm	Imax	5760cd	5 3.20 230



4000K		H(m)	D(m)	Emax(lx)
Ra80			36°	
Fixture Power	28W	1	0.64	5807
Source Flux	3717lm	2	1.28	1452
Fixture Flux	2059lm	3	1.92	645
Efficacy	74lm/W	4	2.56	363
TS1670	Imax=1562cd/klm	Imax	5807cd	5 3.20 232



MEDIUM WIDE FLOOD

3000K		H(m)	D(m)	Emax(lx)
Ra80			46°	
Fixture Power	33W	1	0.85	7462
Source Flux	5072lm	2	1.71	1866
Fixture Flux	4108lm	3	2.56	829
Efficacy	124lm/W	4	3.41	466
TS1671	Imax=1507cd/klm	Imax	7642cd	5 4.26 298

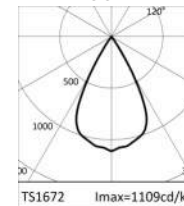


4000K		H(m)	D(m)	Emax(lx)
Ra80			46°	
Fixture Power	33W	1	0.85	7640
Source Flux	5193lm	2	1.71	1910
Fixture Flux	4206lm	3	2.56	849
Efficacy	127lm/W	4	3.41	478
TS1671	Imax=1507cd/klm	Imax	7824cd	5 4.26 306

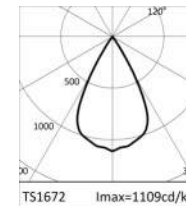


WIDE FLOOD

3000K		H(m)	D(m)	Emax(lx)
Ra80			56°	
Fixture Power	33W	1	1.07	5623
Source Flux	5072lm	2	2.14	1406
Fixture Flux	4148lm	3	3.20	625
Efficacy	125lm/W	4	4.27	351
TS1672	Imax=1109cd/klm	Imax	5623cd	5 5.34 225



4000K		H(m)	D(m)	Emax(lx)
Ra80			56°	
Fixture Power	33W	1	1.07	5757
Source Flux	5193lm	2	2.14	1439
Fixture Flux	4247lm	3	3.20	640
Efficacy	128lm/W	4	4.27	360
TS1672	Imax=1109cd/klm	Imax	5757cd	5 5.34 230



VENDORS



Singage/Wayfinding/Art

Boston Building Wraps

Location: Boston MA

<https://bostonbuildingwraps.com/>

Details:

- Experience: The Hub, Boston
- Exterior Signage/Wayfinding
- Building coverings
- Custom outriggers
- Mural alternatives

Lighting

Illuminate New England

Location: Burlington MA

<https://illuminate.com/eastern/>

THANK YOU