

# IRVING BUILDING RENOVATION/ PHILBRICK-SUMNER MERGER COMMUNITY MEETING


Monday, October 23, 2023 at 6:30 PM &  
Wednesday, October 25, 2023 at 8:00 AM

# Agenda

- Welcome and Introductions
- Recap
- Irving Renovation Update - PFD
- Addition-Renovation Visual Presentation - Mount Vernon Group
- Design Team Next Steps

# GREEN NEW DEAL for BPS

 **Academics:** High quality ethnically and culturally responsive curriculum, instruction and career pathways

 **Enrichment:** Access to arts, sports, student government, and safe places to go before and after school

 **Facilities:** Modern buildings with access to science labs, technology, libraries, gymnasiums, and performance, supportive and green spaces

 **Student & Family Supports:** Resources for families so our students, families, and communities can thrive

# COMMUNITY ENGAGEMENT & DECISION-MAKING SPECTRUM

INCREASING IMPACT ON THE DECISION 

	<b>INFORM</b>	<b>CONSULT</b>	<b>INVOLVE</b>	<b>COLLABORATE</b>	<b>EMPOWER</b>
<b>PUBLIC PARTICIPATION GOAL</b>	To provide the public with balanced and objective information to assist them in understanding the problem, alternatives, opportunities and/or solutions.	To obtain public feedback on analysis, alternatives and/or decisions.	To work directly with the public throughout the process to ensure that public concerns and aspirations are consistently understood and considered.	To partner with the public in each aspect of the decision including the development of alternatives and the identification of the preferred solution.	To place final decision making in the hands of the public.
<b>PROMISE TO THE PUBLIC</b>	We will keep you informed.	We will keep you informed, listen to and acknowledge concerns and aspirations, and provide feedback on how public input influenced the decision.	We will work with you to ensure that your concerns and aspirations are directly reflected in the alternatives developed and provide feedback on how public input influenced the decision.	We will look to you for advice and innovation in formulating solutions and incorporate your advice and recommendations into the decisions to the maximum extent possible.	We will implement what you decide.

# PHILBRICK - SUMNER: *Where we've been*

Philbrick-Sumner begins planning for a Design Team

**SUMMER 2022**

Philbrick-Sumner Design Team revived to plan details of proposal

**FEB 2023**

**Central Office staff continue to operationalize proposal for SY 24/25 community engagement, and school supports**

Philbrick-Sumner opens for SY25-26 as combined school

**SEPTEMBER 2025**



**MAY 2022**

Proposal shared with Philbrick-Sumner communities

**NOVEMBER 2022**

Overview of Project shared with Philbrick-Sumner Communities

**SPRING 2023**

**School Committee**

- April 26: proposal introduced  
- May 10: SC vote

# GROUNDING IN THE RACIAL EQUITY PLANNING TOOL

The **BPS Racial Equity Planning Tool (REPT)** lays out a clear six-step process to operationalize this commitment to ensure each decision we make is aimed at closing opportunity gaps and advancing racial equity.

## BPS RACIAL EQUITY PLANNING TOOL COMPONENTS



# PFD Journey

- Irving Middle School Feasibility Study - July 2022
- Irving Draft Schematic Design - October 2022
- Expected Construction Start - Summer of 2023
  - Including a temporary space construction on the first floor for SY23-24
- Projected Project Completion Date - Fall SY25-26



# WHERE WE ARE NOW

## UPDATED TIMELINE FROM PFD



# IRVING SCHOOL RECONFIGURATION

Boston Public Facilities Department Project Team

Dion Irish, Chief of Operations

Kerrie Griffin, Director

Patrick Mulvey-Welsh, Assistant Director of Construction

Bill Evers, Project Manager

# IRVING SCHOOL RECONFIGURATION

## PHASE 1 – SWING SPACE PROJECT SCHEDULE

### BIDDING AND CONTRACT

- Bids have been received
- Delay in awarding the project due to bid irregularity that required legal clarification
- Delay in executing the contract due to paperwork issues with contractor
- Contract executed

### CONSTRUCTION

- Anticipated start of construction is mid-November
- Anticipated Substantial Completion – April 12, 2023
- Anticipated classroom relocation to Swing Space – April 15 through April 19, 2024

# IRVING SCHOOL RECONFIGURATION

## PHASE 2 – RENOVATION & ADDITION PROJECT SCHEDULE

### BIDDING AND CONTRACT

- Contractor Prequalification Process complete
- Invitation to Bids issues first week of November
- Filed Sub Bids due 3rd week of November
- General Contractor Bids due 1st week of December
- Anticipated Contract Execution mid February

# IRVING SCHOOL RECONFIGURATION

## PHASE 2 – RENOVATION & ADDITION PROJECT SCHEDULE

### CONSTRUCTION

- Estimated construction duration 16 months
- Contractor Pre Construction & Mobilization
  - Initial submittal packages including long lead items procurement February & March 2024
  - GC mobilize on site - April 2024
- Anticipated Substantial Completion of Addition and Upper Floors – February 14, 2025
- Anticipate relocation from Swing Space to Upper Floors during February Vacation 2025 – February 17 through February 21, 2025
- Anticipated start of renovations of Swing Space to final configuration - February 24, 2025
- Anticipated Substantial Completion – end of June 2025
- Anticipate start of BPS operations in completed Washington Irving School – July 2025
- Reconfigured Washington Irving School open to students – September 2025

# Washington Irving Addition-Reno Visual Presentation

Mount Vernon Group Architects Project Team

Frank Tedesco, Principal

Dennis Daly, Design Principal

David Turcott, Associate

# WASHINGTON IRVING

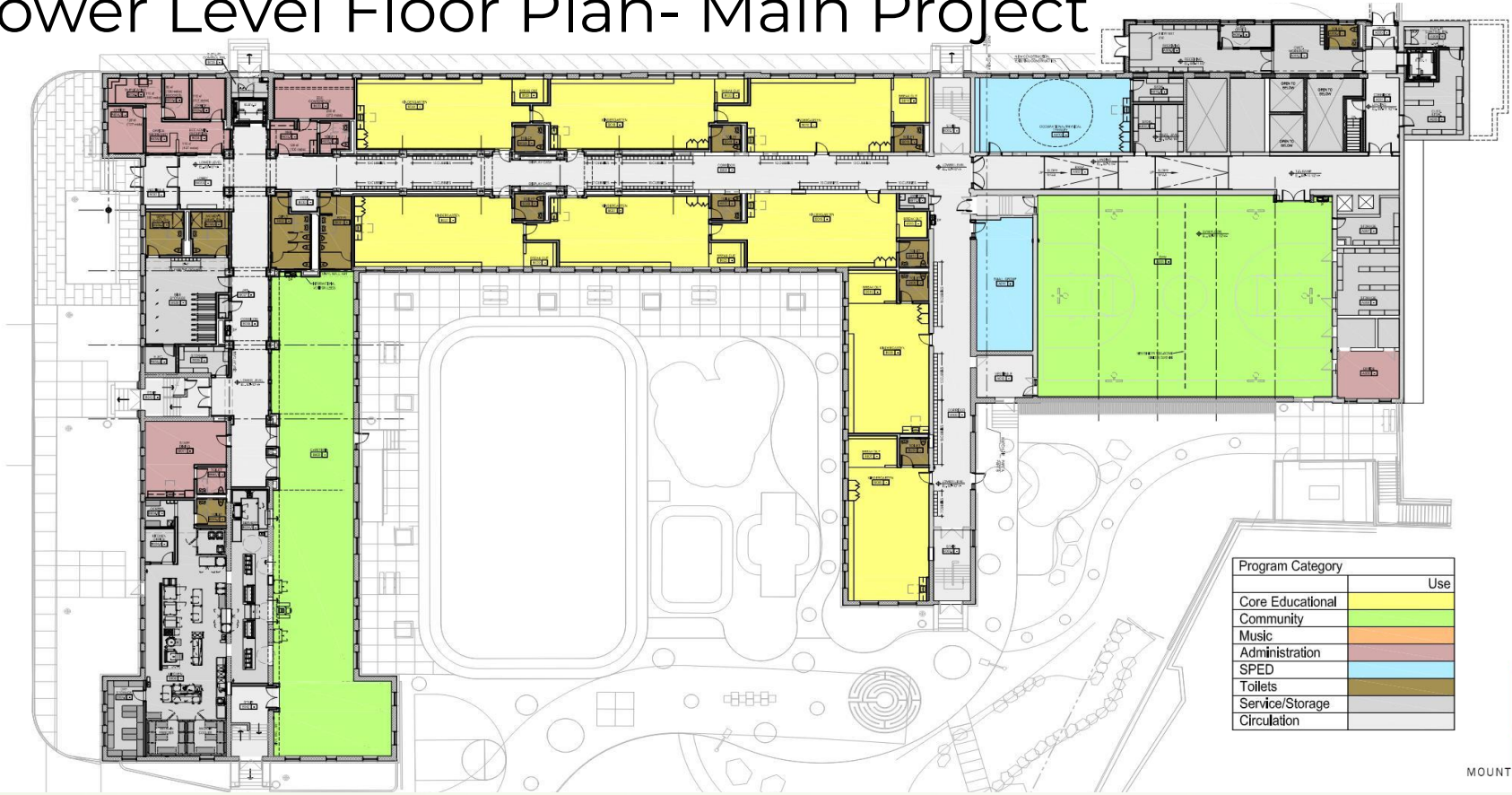
## ADDITION-RENOVATION PRESENTATION



# Lower Level Floor Plan- 8 Classroom Swing Space

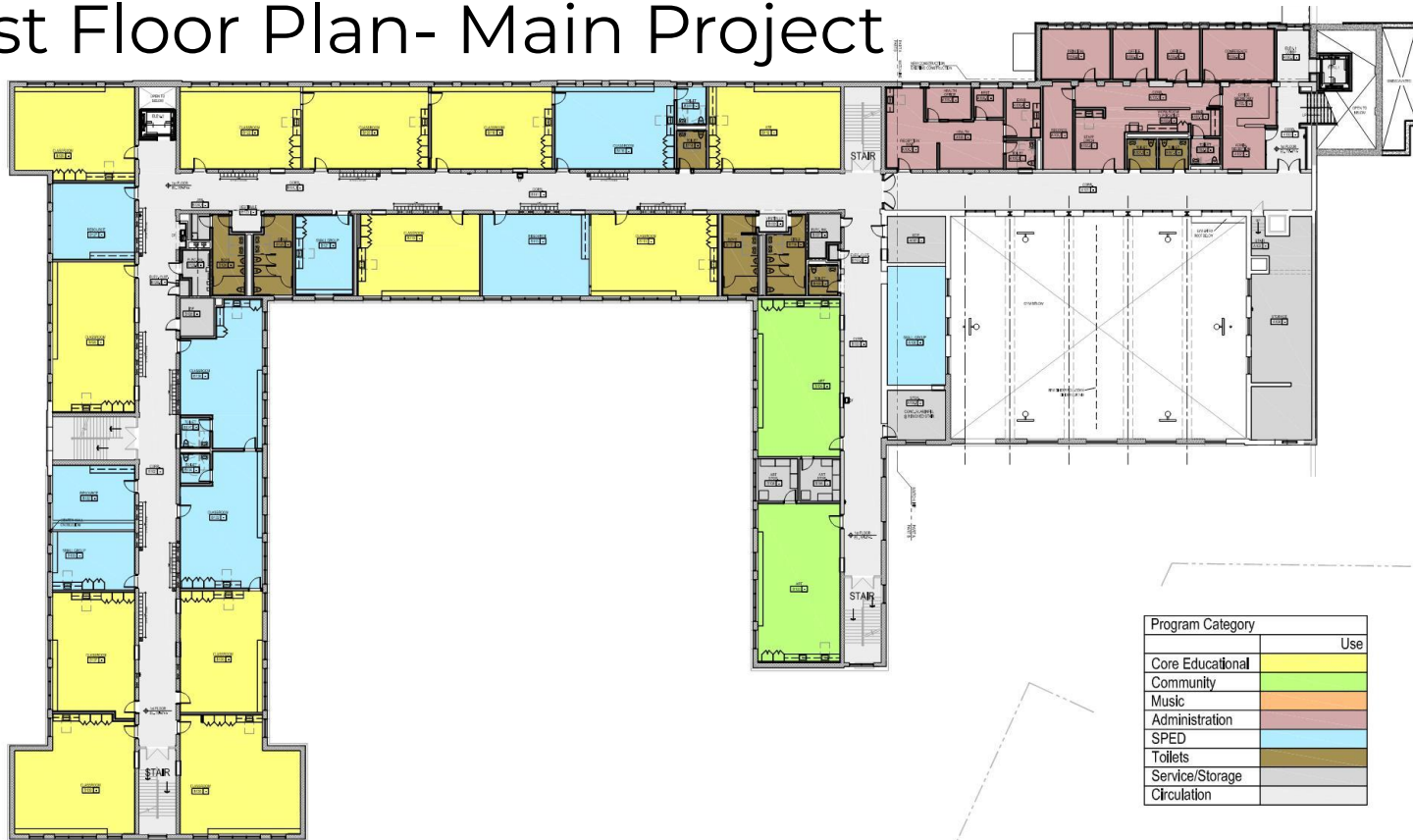


# Lower Level Floor Plan- Main Project





# First Floor Plan- Main Project



# Second Floor Plan- Main Project



Program Category	Use
Core Educational	Yellow
Community	Light Green
Music	Light Blue
Administration	Orange
SPED	Light Blue
Toilets	Brown
Service/Storage	Light Green
Circulation	Grey

# Site Plan - Main Project



# New Addition Entry View - Main Project



# New Entry Lobby View - Main Project



# New North Addition View - Main Project



# New Hawthorne St. Entry View - Main Project



# New Entry Lobby – Interior View

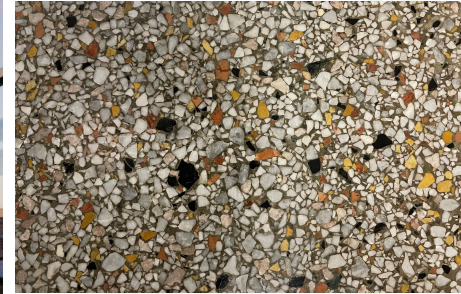
## Design Features:

- Art Wall
- Wood paneling at elevator shaft and at the coffered ceiling
- Grand light fixture with cove lighting



## Flooring

1. New Terrazzo to match existing

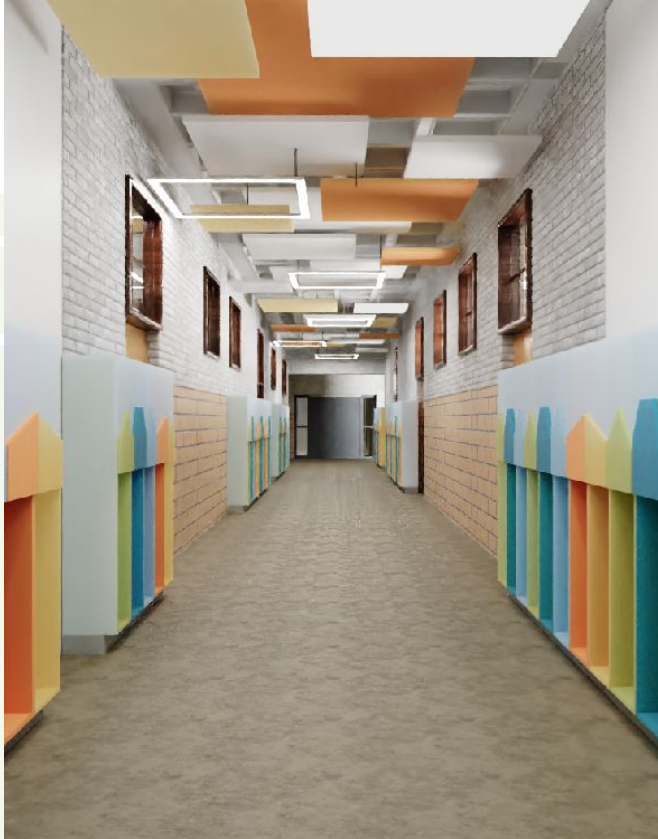




# Typical Kindergarten Classroom, Lower Level – Interior Views



# Typical Kindergarten Corridor, Lower Level – Interior View



Flooring  
Existing Terrazzo



Design Features:

- Armstrong Tectum Acoustical Clouds
- Square halo lights, hollow and solid
- City skyline cubby concept



# Typical Classroom, First Floor – Interior Views



# Media Center, Second Floor – Interior Views



# Administration, First Floor – Interior Views



# Cafeteria, Lower Level - Interior Views



# Next Steps

- **BPS Design Team Reconfiguration**

- Two Working Groups
  - Community Engagement
  - Academic and Programming Team

- **Launch Schedule for SY23-24**

- By End of November 2023
  - Working Group Meetings
  - Community Events

## Community Engagement Focus

Bring Communities Together - Engagement Plan  
Racial Equity Work  
Renaming School

## Academic and Programming Focus

Instruction and Inclusion  
Budget and Staffing  
Resource Allocation



# Questions?



# QUESTIONS?

Contact: [capitalplanning@bostonpublicschools.org](mailto:capitalplanning@bostonpublicschools.org)

**THANK YOU!**