



Capital Planning: JQUS SSC/Parent Meeting

November 14, 2023
5:00 PM

GREEN NEW DEAL for BPS



Academics: High quality ethnically and culturally responsive curriculum, instruction and career pathways



Enrichment: Access to arts, sports, student government, and safe places to go before and after school



Facilities: Modern buildings with access to science labs, technology, libraries, gymnasiums, and performance, supportive and green spaces

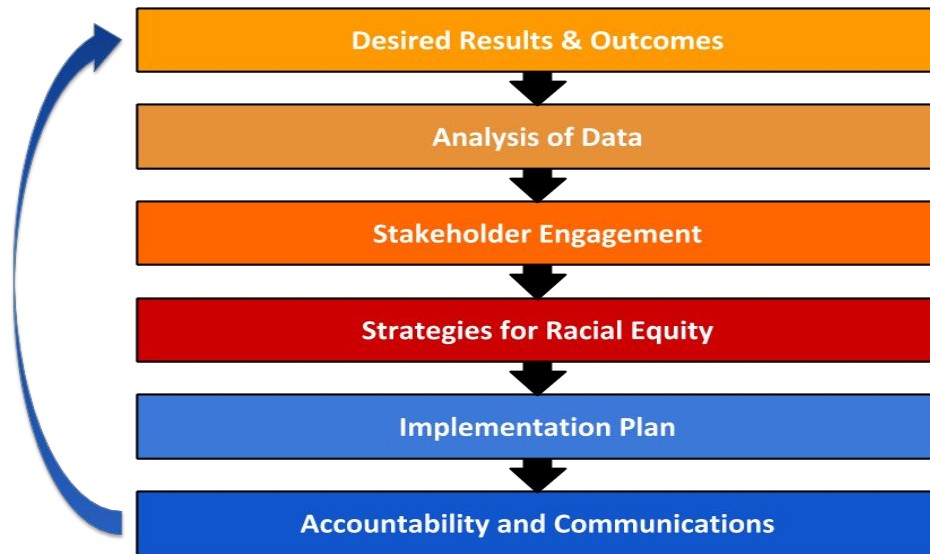


Student & Family Supports: Resources for families so our students, families, and communities can thrive

GROUNDING IN THE RACIAL EQUITY PLANNING TOOL

The BPS Racial Equity Planning Tool (REPT) lays out a clear six-step process to operationalize this commitment to ensure each decision we make is aimed at closing opportunity gaps and advancing racial equity.

BPS RACIAL EQUITY PLANNING TOOL COMPONENTS

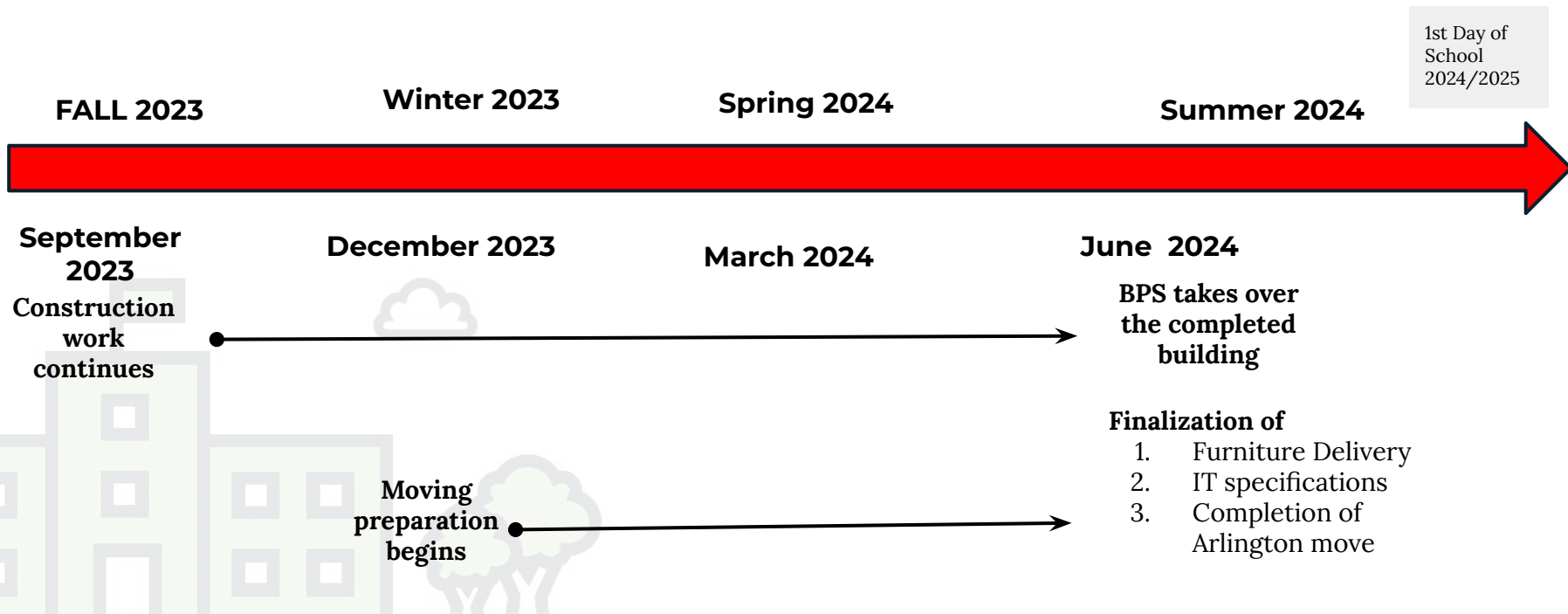


Key Updates for SY 23/24

BPS in partnership with City of Boston Public Facilities continue to keep the project moving forward with work remaining on schedule for a September 2024 opening.

New Sr Project and Operations Managers have been assigned by Capital Planning to support school leadership in ensuring a timely completion of this work and to support the moving logistics from Arlington St to the new JQUS building.

Where are we in the project?



Opportunity to give feedback on school graphics

As we work to ensure the building embodies the spirit of the school and community, we are sharing some of the proposed visuals that school leaders have vetted for your review and feedback.

As pictures are shown

1. Use the chat option or
2. Raise your hand if you have a comment or question

Feedback can be in the forms of:

I like...

I wonder...

I noticed...

Have you thought about...?

Interior

LARGE GRAPHIC LOCATIONS
ENTRY/MEDIA/GYMNASIUM IDEAS

Josiah Quincy Upper School Presentation/Discussion

11.14.23

HMFH ARCHITECTS



Entryway Option 1: Map of Old Boston



Entryway Option 2: JQUS IB Vision



Entryway Option 2: JQUS IB Vision

EXPLORE CONCEPTS, IDEAS AND ISSUES THAT HAVE LOCAL AND GLOBAL
IMPACT. IN THE PROCESS, THEY ACQUIRE IN-DEPTH KNOWLEDGE AND DEVELOP UNDERSTANDING
ACROSS A BALANCED RANGE OF DISCIPLINES.

THE INITIATIVE IN APPLYING THINKING SKILLS
EFFECTIVELY TO RECOGNIZE AND APPROACH COMPLEX
PROBLEMS, REASONED, ETHICAL DECISIONS..

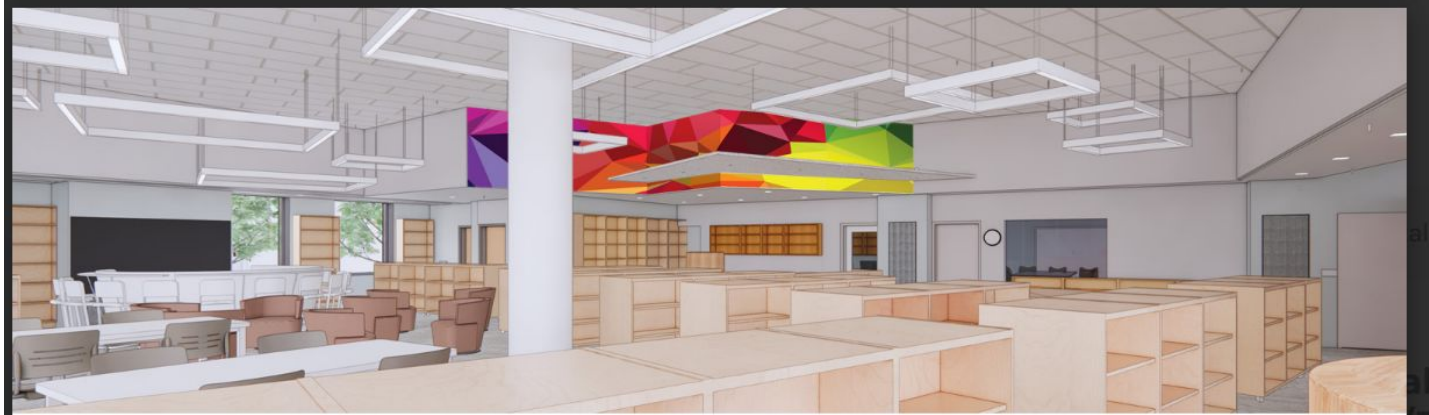
UNDERSTAND THE IMPORTANCE OF INTELLECTUAL,
EMOTIONAL BALANCE TO ACHIEVE PERSONAL
GROWTH AND WELL-BEING FOR THEMSELVES AND OTHERS.

ACT WITH INTEGRITY AND HONESTY, WITH A STRONG SENSE OF FAIRNESS, JUSTICE
AND RESPECT FOR THE DIGNITY OF THE INDIVIDUAL, GROUPS AND COMMUNITIES. THEY TAKE
RESPONSIBILITY FOR THEIR OWN ACTIONS AND THE CONSEQUENCES THAT ACCOMPANY THEM.

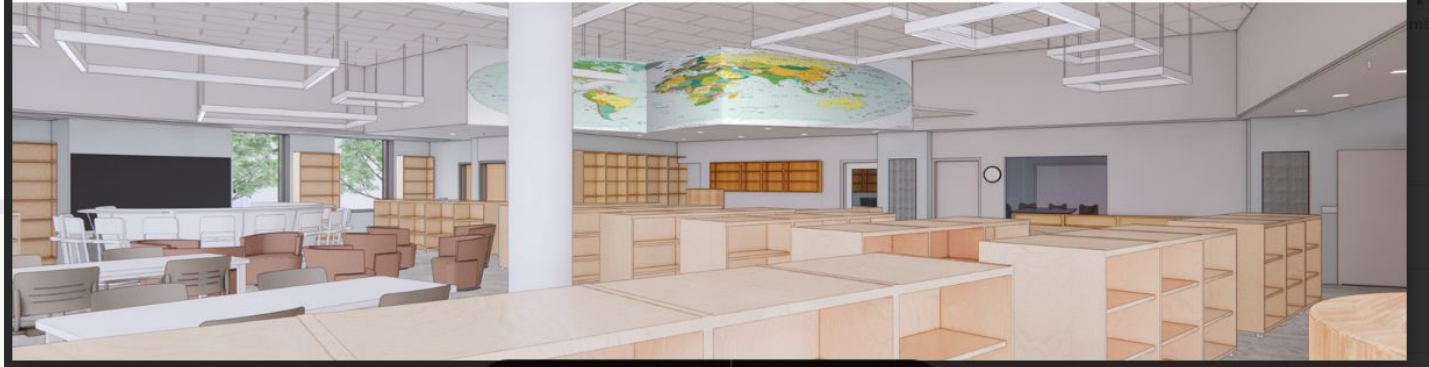
UNDERSTAND AND EXPRESS IDEAS AND INFORMATION CONFIDENTLY
IN MORE THAN ONE LANGUAGE AND IN A VARIETY OF MODES OF
COMMUNICATION. WORK EFFECTIVELY AND WILLINGLY IN COLLABORATION WITH OTHERS.



Media Option 1: Color Blocks



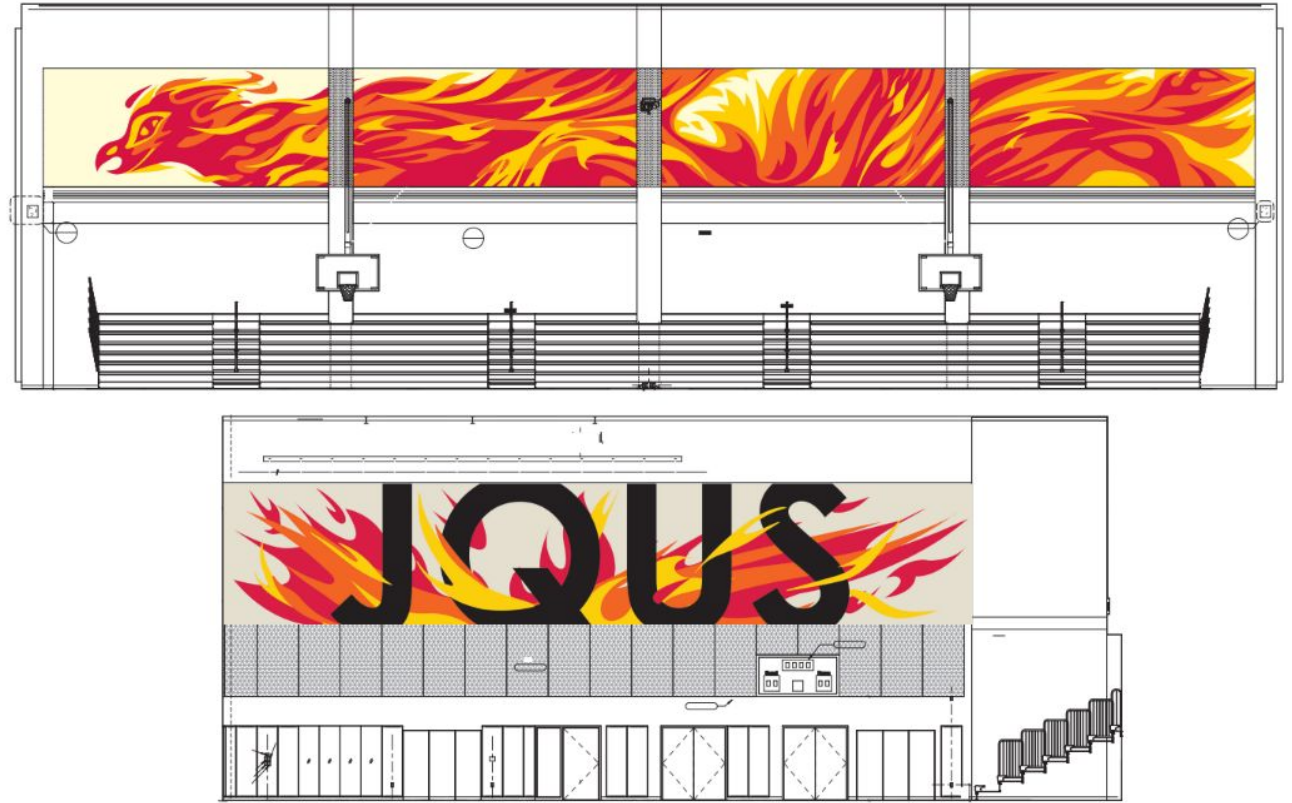
Media Option 2: World Map



Media Option 3: World map with script



Gym Option 1: Flaming Phoenix with fire sign





Gym Option 2: Flaming Phoenix with red sign



Gym Option 3: Flaming Phoenix with full name



Community Forum

- ★ Listen to understand
- ★ Ask for clarifications
- ★ Watch airtime
- ★ Be kind
- ★ Be respectful
- ★ Raise your hand

