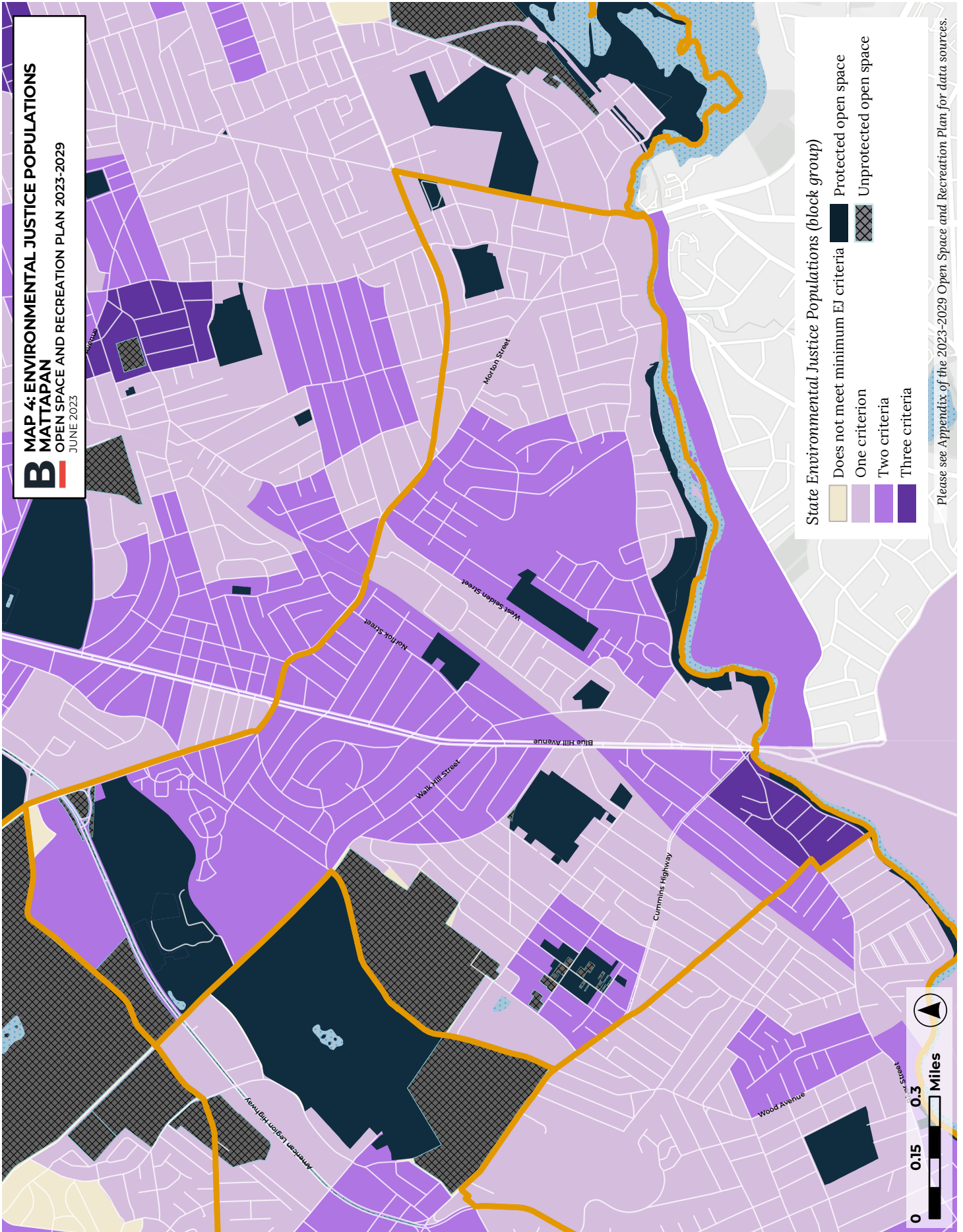
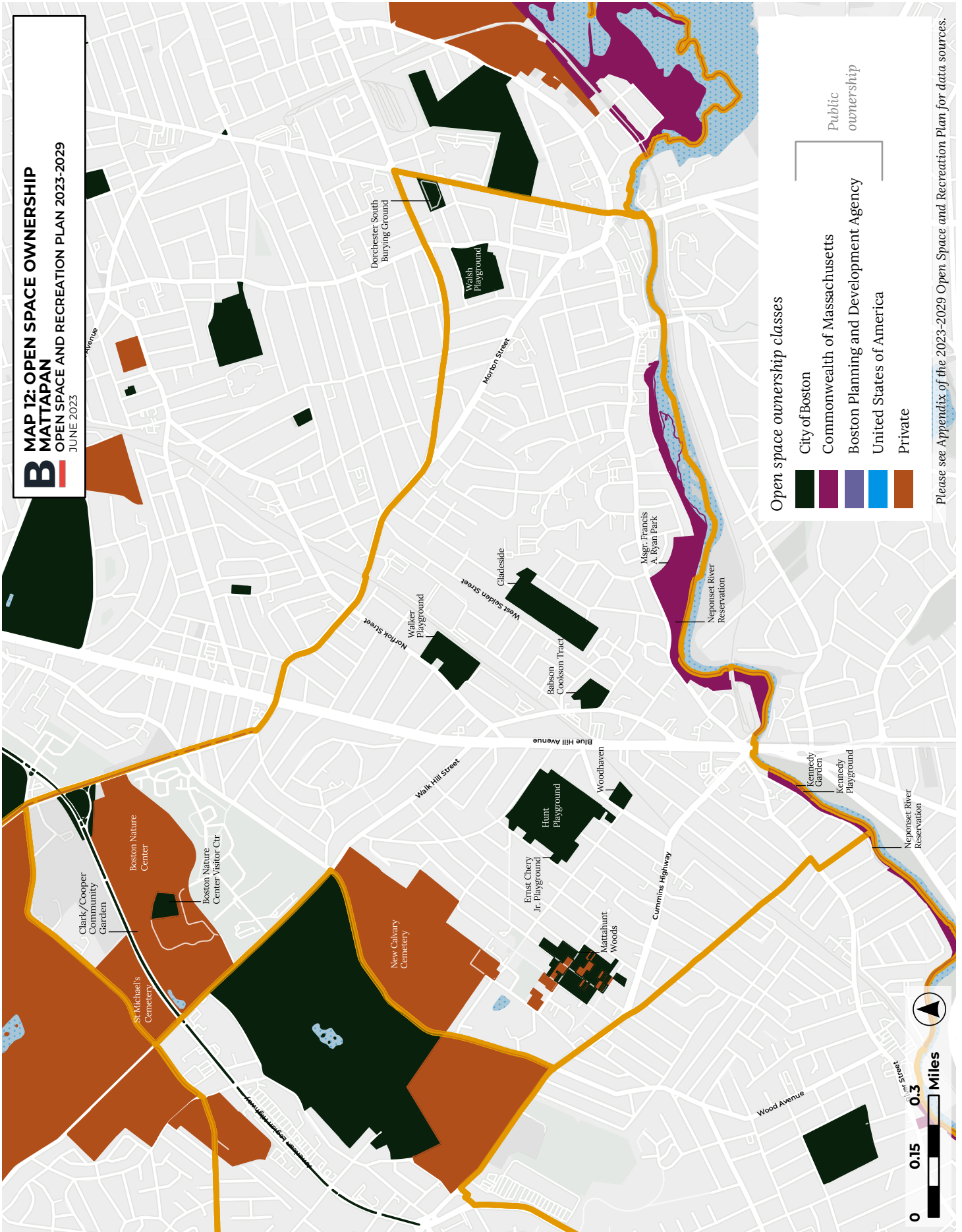


2023-2029 OPEN SPACE AND RECREATION PLAN

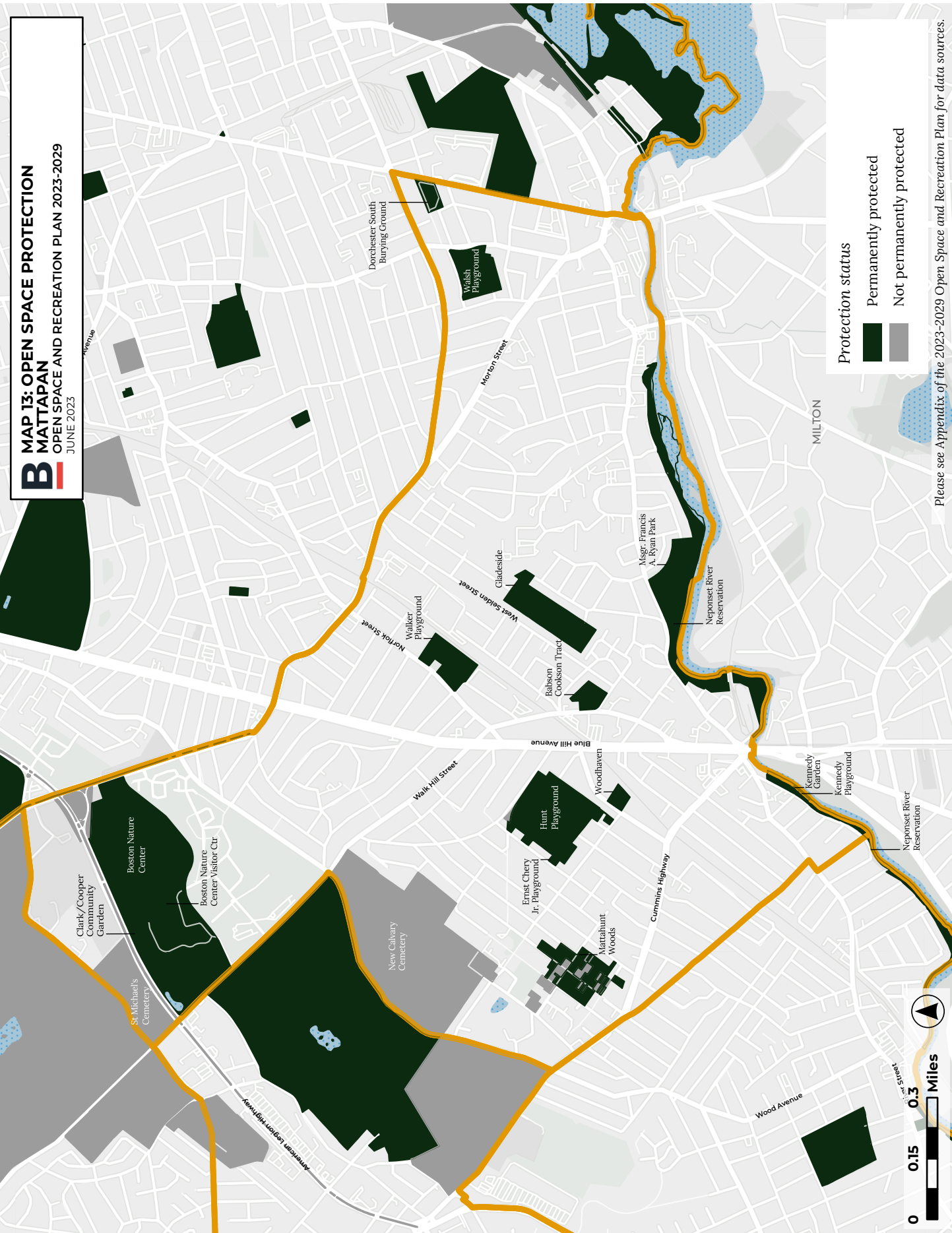
MATTAPAN

NEIGHBORHOOD MAPS





B MAP 13: OPEN SPACE PROTECTION
 MATTAPAN
 OPEN SPACE AND RECREATION PLAN 2023-2029
 JUNE 2023

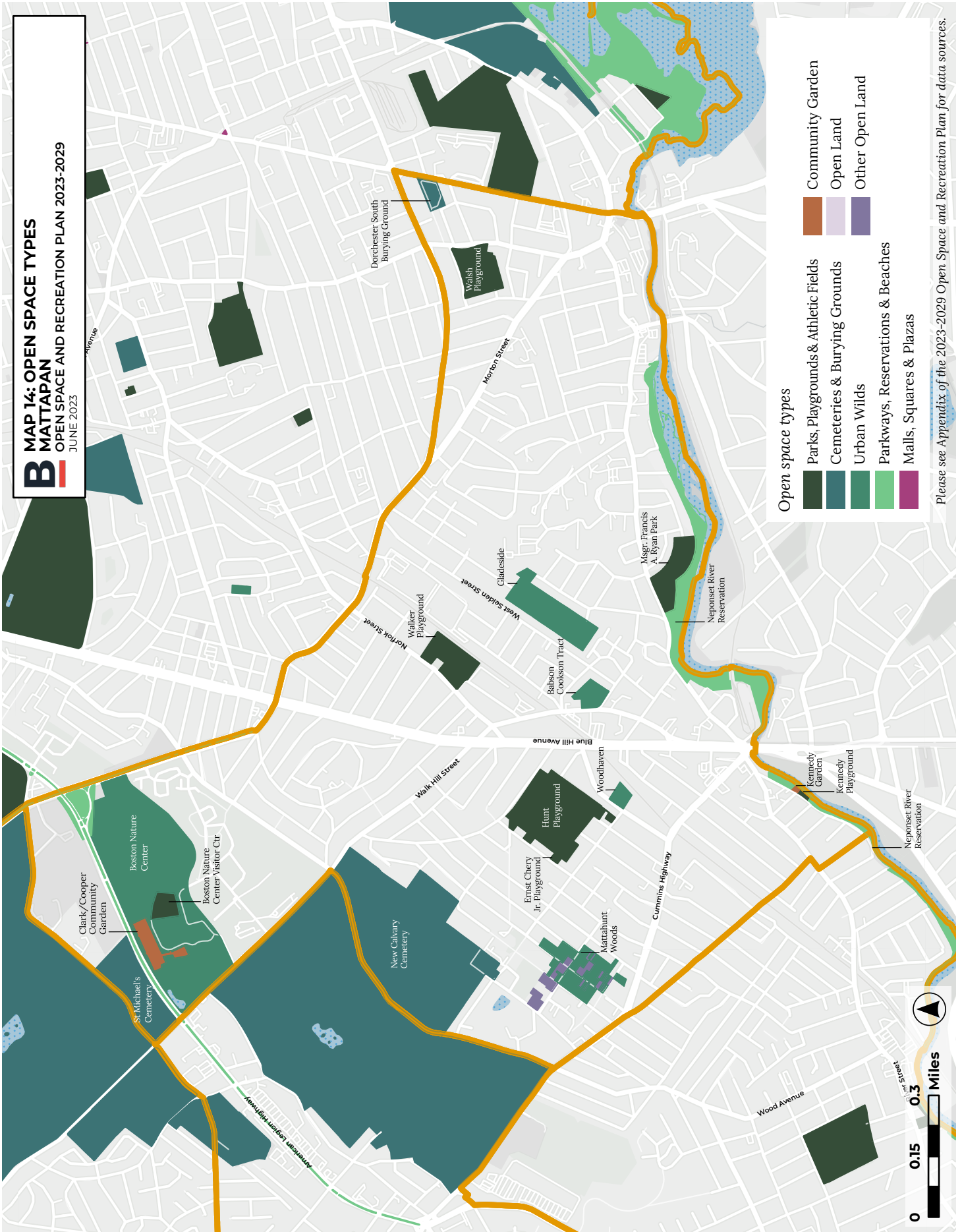


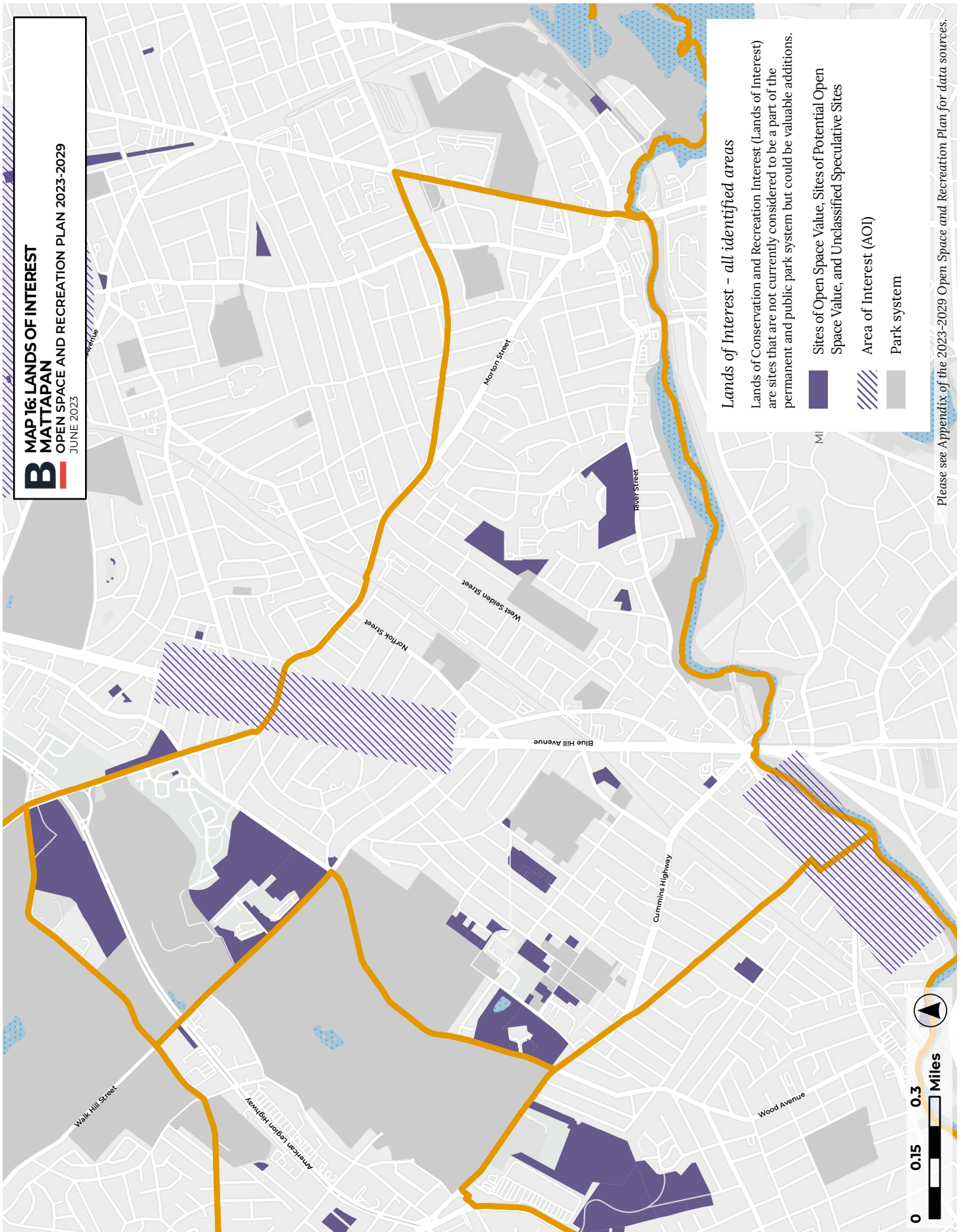
Protection status

- Permanently protected
- Not permanently protected

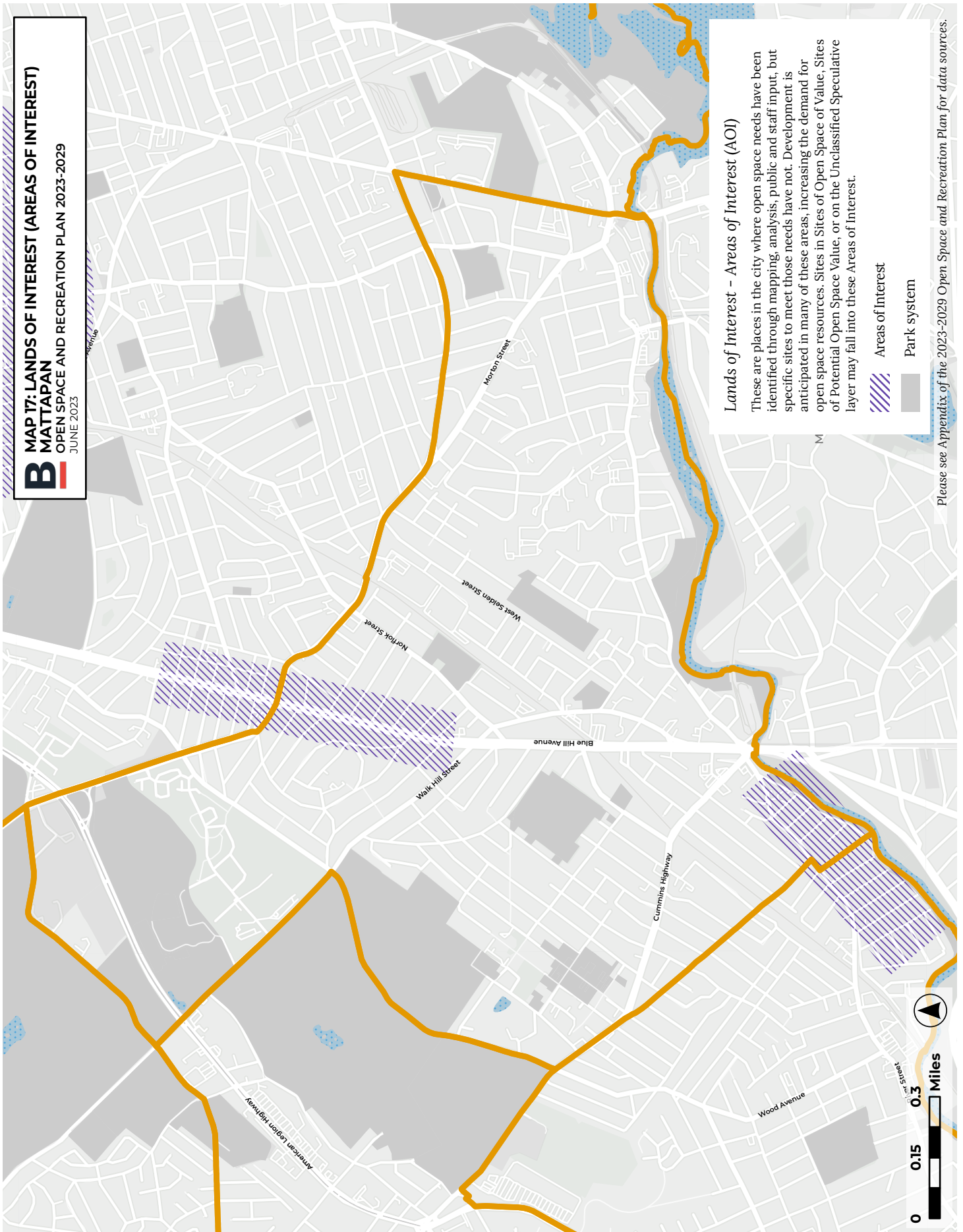


Please see Appendix of the 2023-2029 Open Space and Recreation Plan for data sources.





B MAP 17: LANDS OF INTEREST (AREAS OF INTEREST)
MATTAPAN
OPEN SPACE AND RECREATION PLAN 2023-2029
JUNE 2023



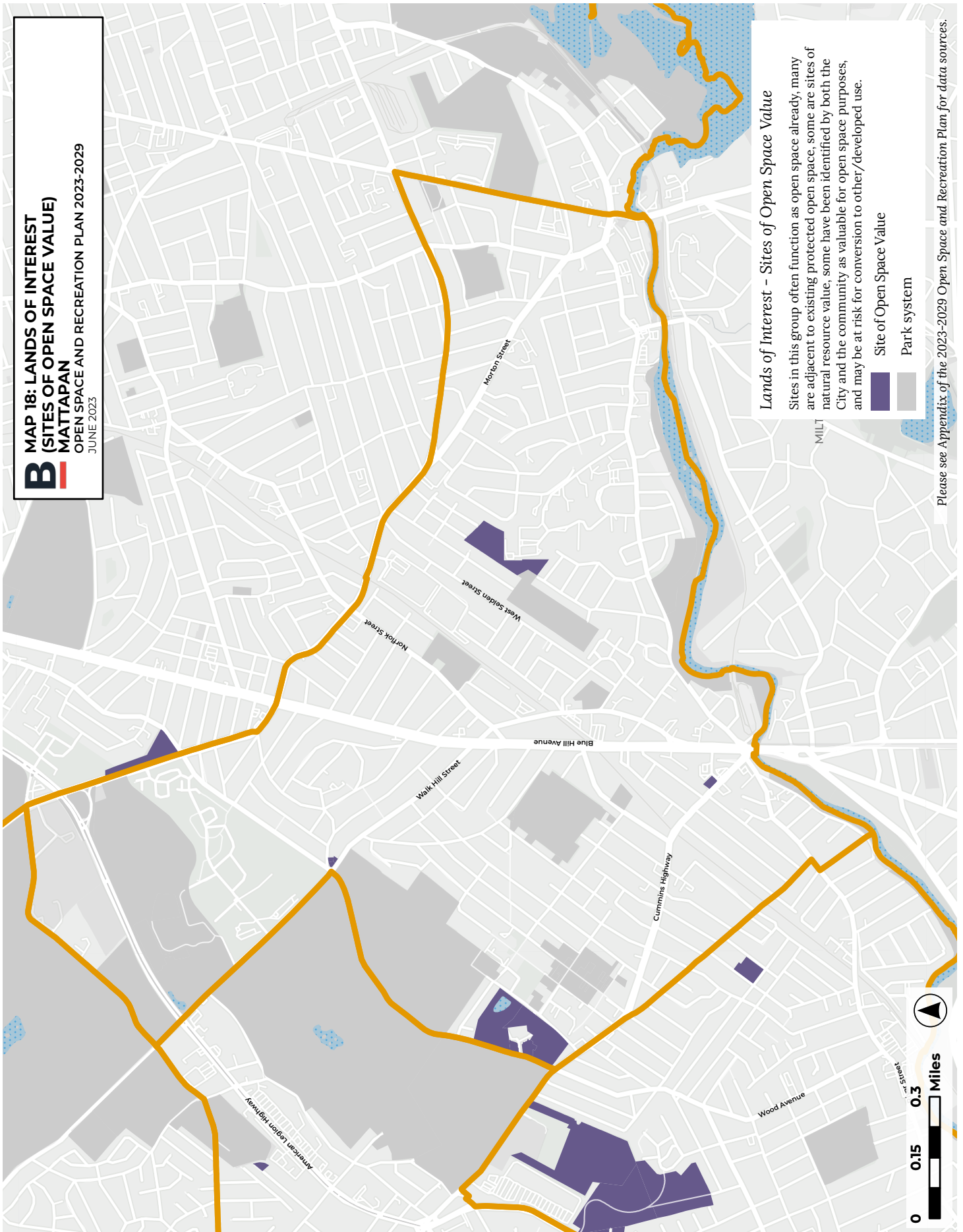
Lands of Interest - Areas of Interest (AOI)

These are places in the city where open space needs have been identified through mapping, analysis, public and staff input, but specific sites to meet those needs have not. Development is anticipated in many of these areas, increasing the demand for open space resources. Sites in Sites of Open Space of Value, Sites of Potential Open Space Value, or on the Unclassified Speculative layer may fall into these Areas of Interest.

- Areas of Interest
- Park system

Please see Appendix of the 2023-2029 Open Space and Recreation Plan for data sources.

B MAP 18: LANDS OF INTEREST
(SITES OF OPEN SPACE VALUE)
MATTAPAN
OPEN SPACE AND RECREATION PLAN 2023-2029
JUNE 2023



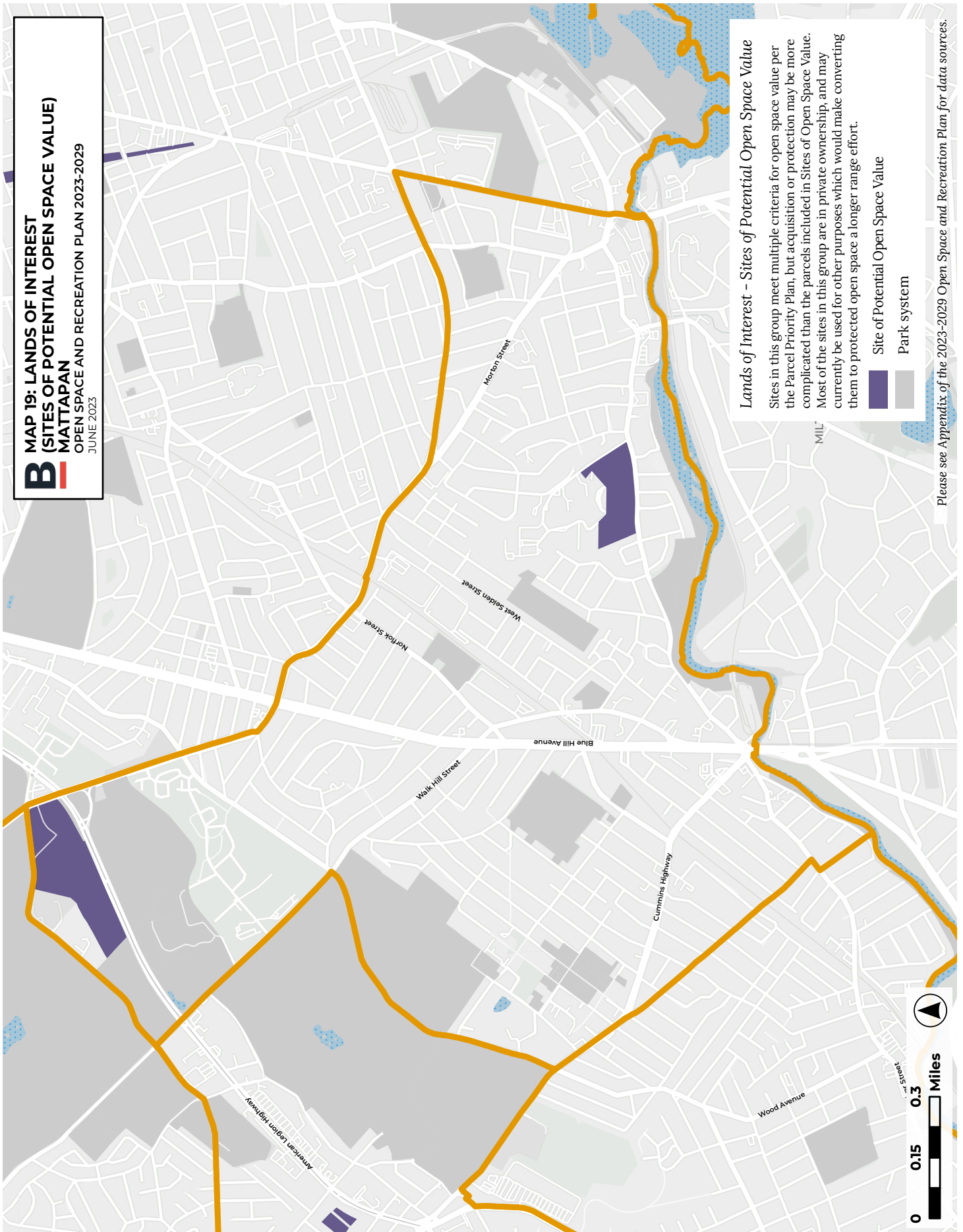
Lands of Interest - Sites of Open Space Value

Sites in this group often function as open space already, many are adjacent to existing protected open space, some are sites of natural resource value, some have been identified by both the City and the community as valuable for open space purposes, and may be at risk for conversion to other/developed use.

- Site of Open Space Value
- Park system

Please see Appendix of the 2023-2029 Open Space and Recreation Plan for data sources.

B MAP 19: LANDS OF INTEREST
(SITES OF POTENTIAL OPEN SPACE VALUE)
MATTAPAN
OPEN SPACE AND RECREATION PLAN 2023-2029
JUNE 2023



Lands of Interest - Sites of Potential Open Space Value

Sites in this group meet multiple criteria for open space value per the Parcel Priority Plan, but acquisition or protection may be more complicated than the parcels included in Sites of Open Space Value. Most of the sites in this group are in private ownership, and may currently be used for other purposes which would make converting them to protected open space a longer range effort.

- Site of Potential Open Space Value
- Park system

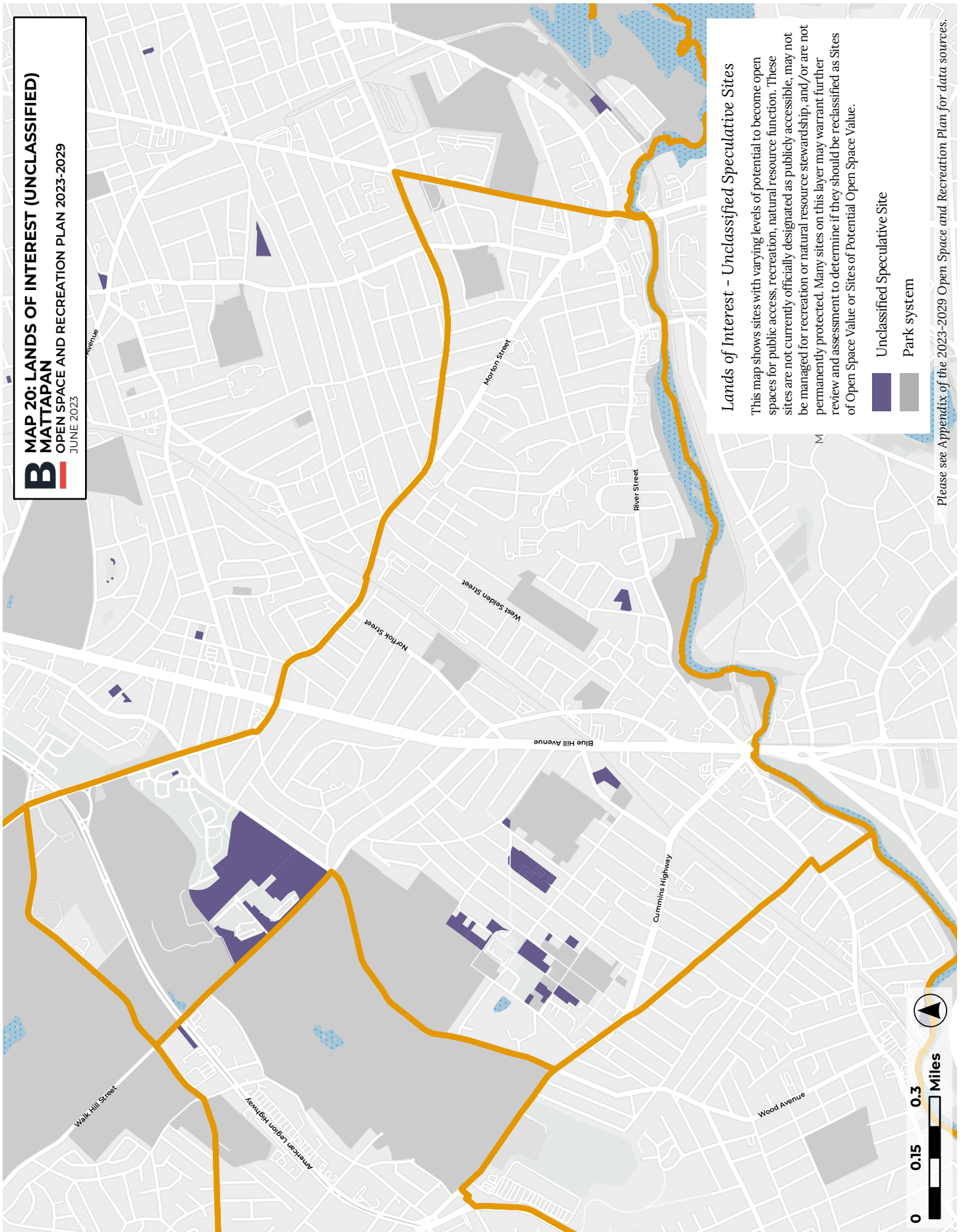
Please see Appendix of the 2023-2029 Open Space and Recreation Plan for data sources.

B MAP 20: LANDS OF INTEREST (UNCLASSIFIED)
MATTAPAN
OPEN SPACE AND RECREATION PLAN 2023-2029
JUNE 2023

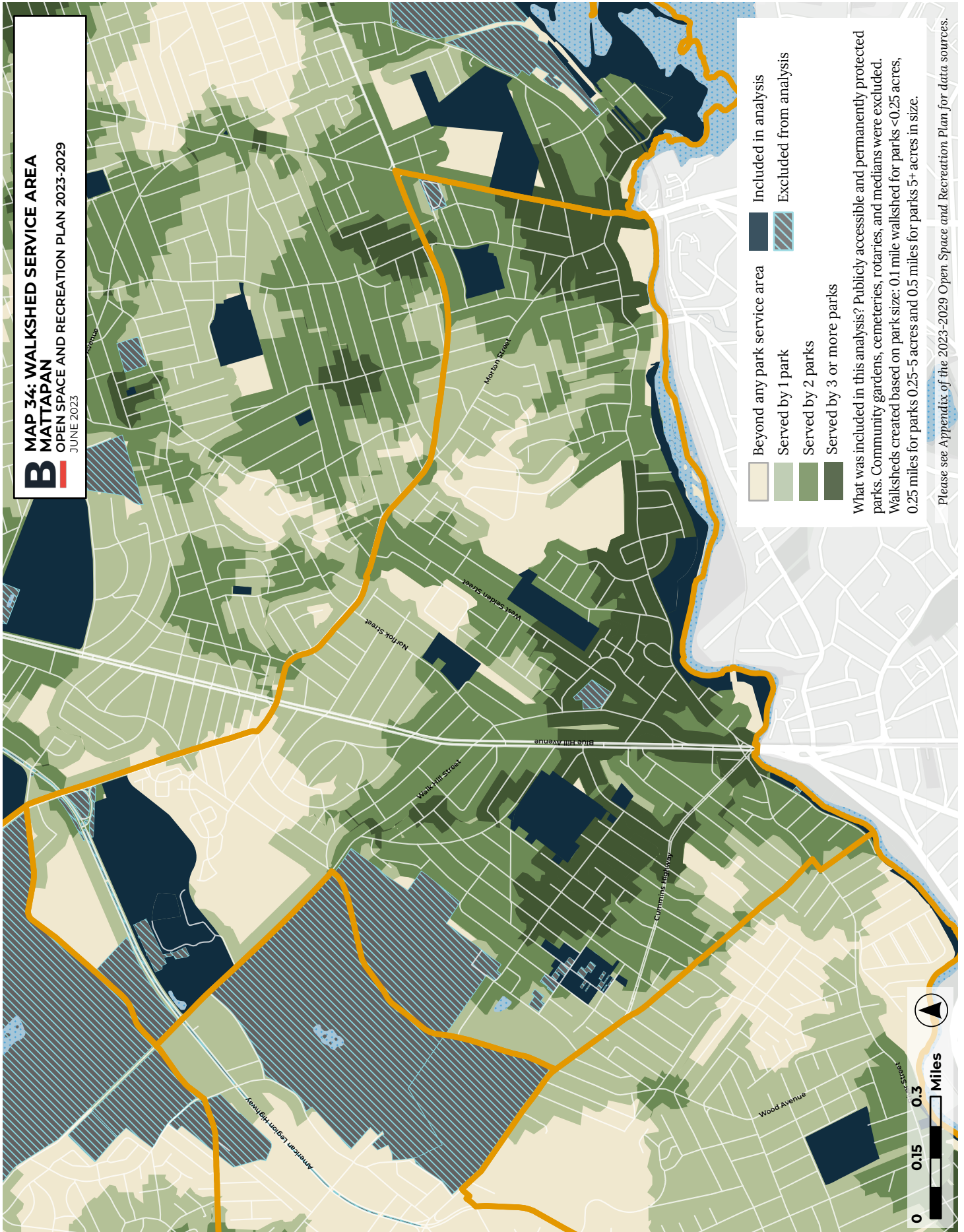
Lands of Interest - Unclassified Speculative Sites

This map shows sites with varying levels of potential to become open spaces for public access, recreation, natural resource function. These sites are not currently officially designated as publicly accessible, may not be managed for recreation or natural resource stewardship, and/or are not permanently protected. Many sites on this layer may warrant further review and assessment to determine if they should be reclassified as Sites of Open Space Value or Sites of Potential Open Space Value.

- Unclassified Speculative Site
- Park system



Please see Appendix of the 2023-2029 Open Space and Recreation Plan for data sources.



Please see Appendix of the 2023-2029 Open Space and Recreation Plan for data sources.

