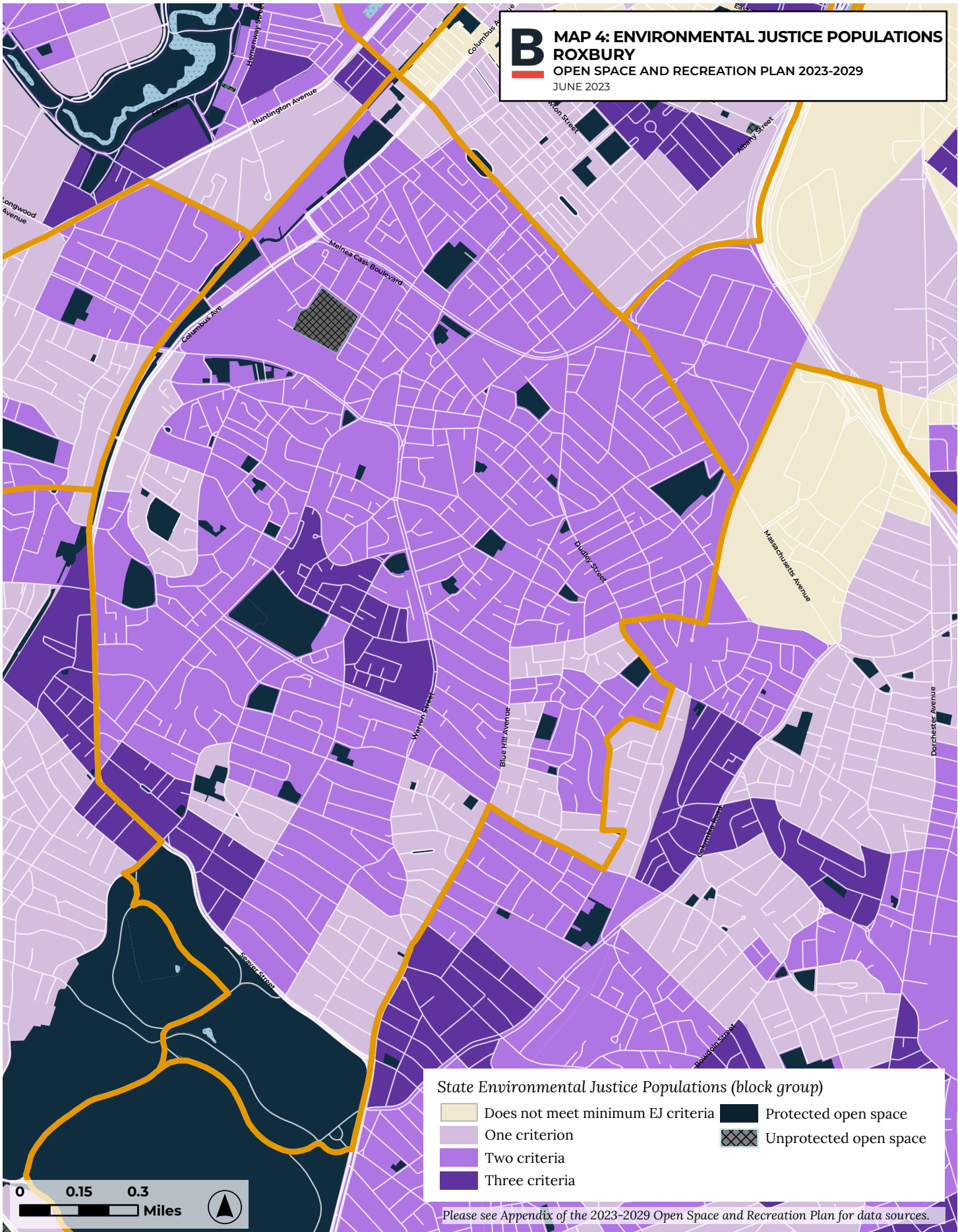


2023-2029 OPEN SPACE AND RECREATION PLAN

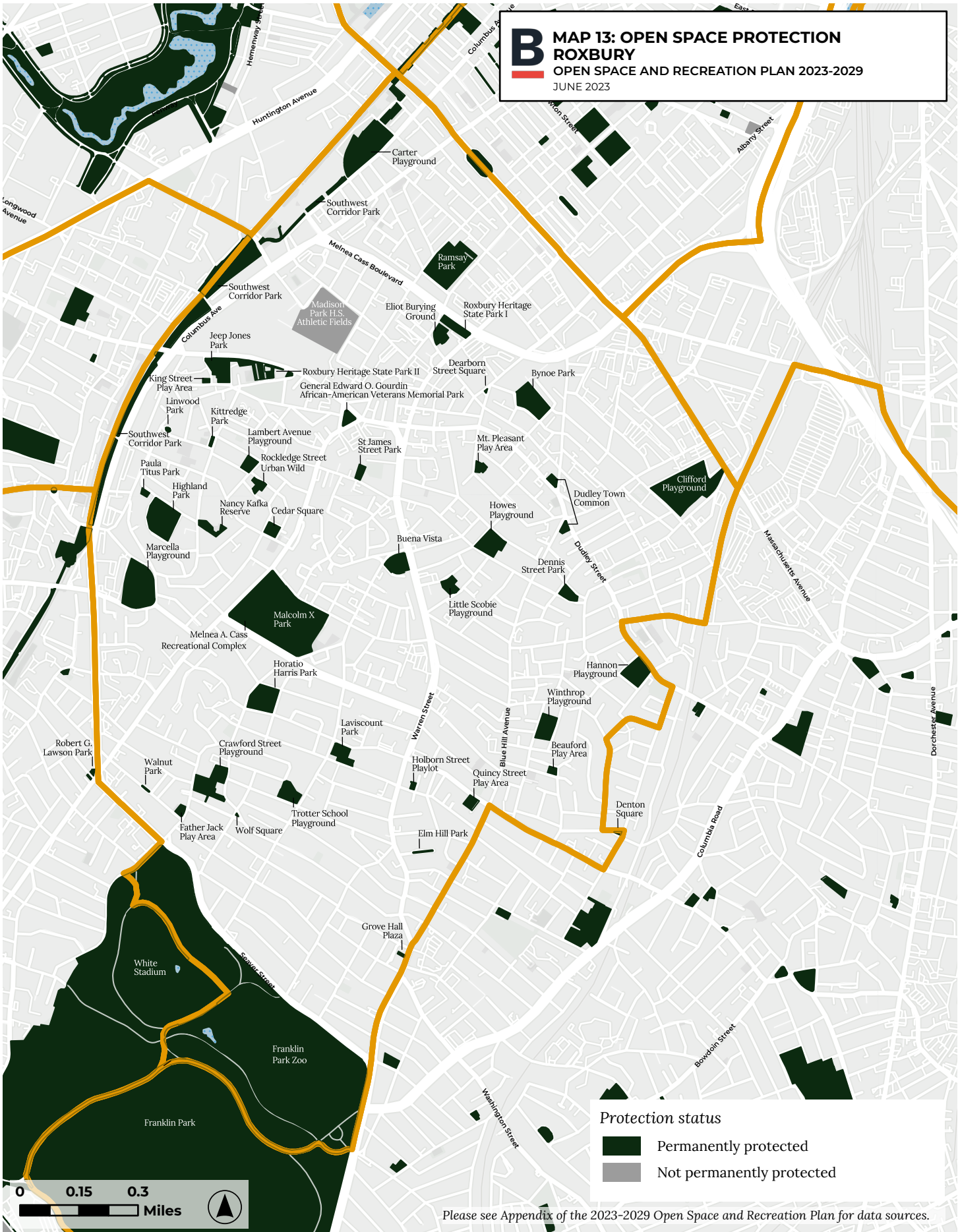
ROXBURY

NEIGHBORHOOD MAPS

B MAP 4: ENVIRONMENTAL JUSTICE POPULATIONS
ROXBURY
OPEN SPACE AND RECREATION PLAN 2023-2029
JUNE 2023

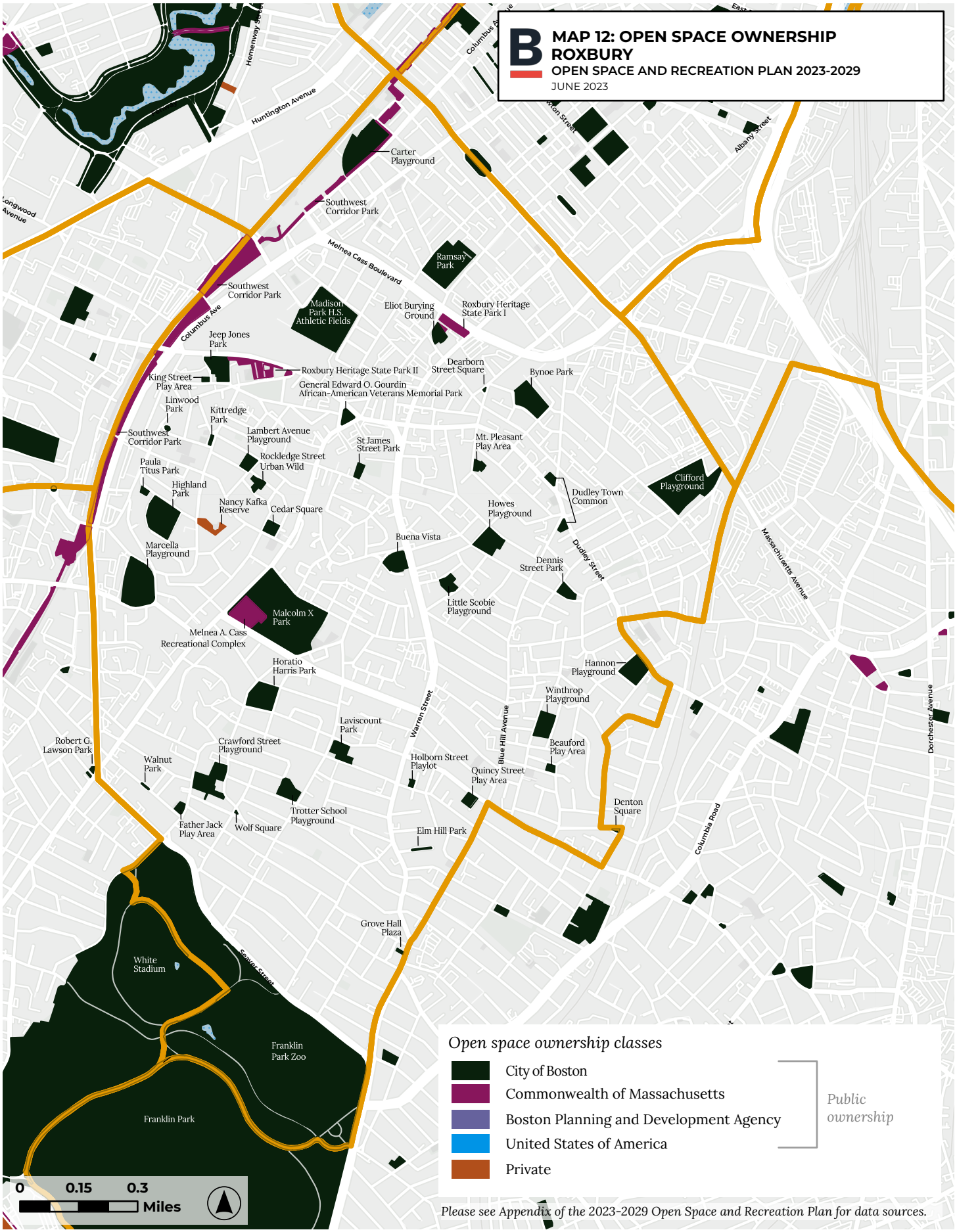


B MAP 13: OPEN SPACE PROTECTION
ROXBURY
OPEN SPACE AND RECREATION PLAN 2023-2029
JUNE 2023



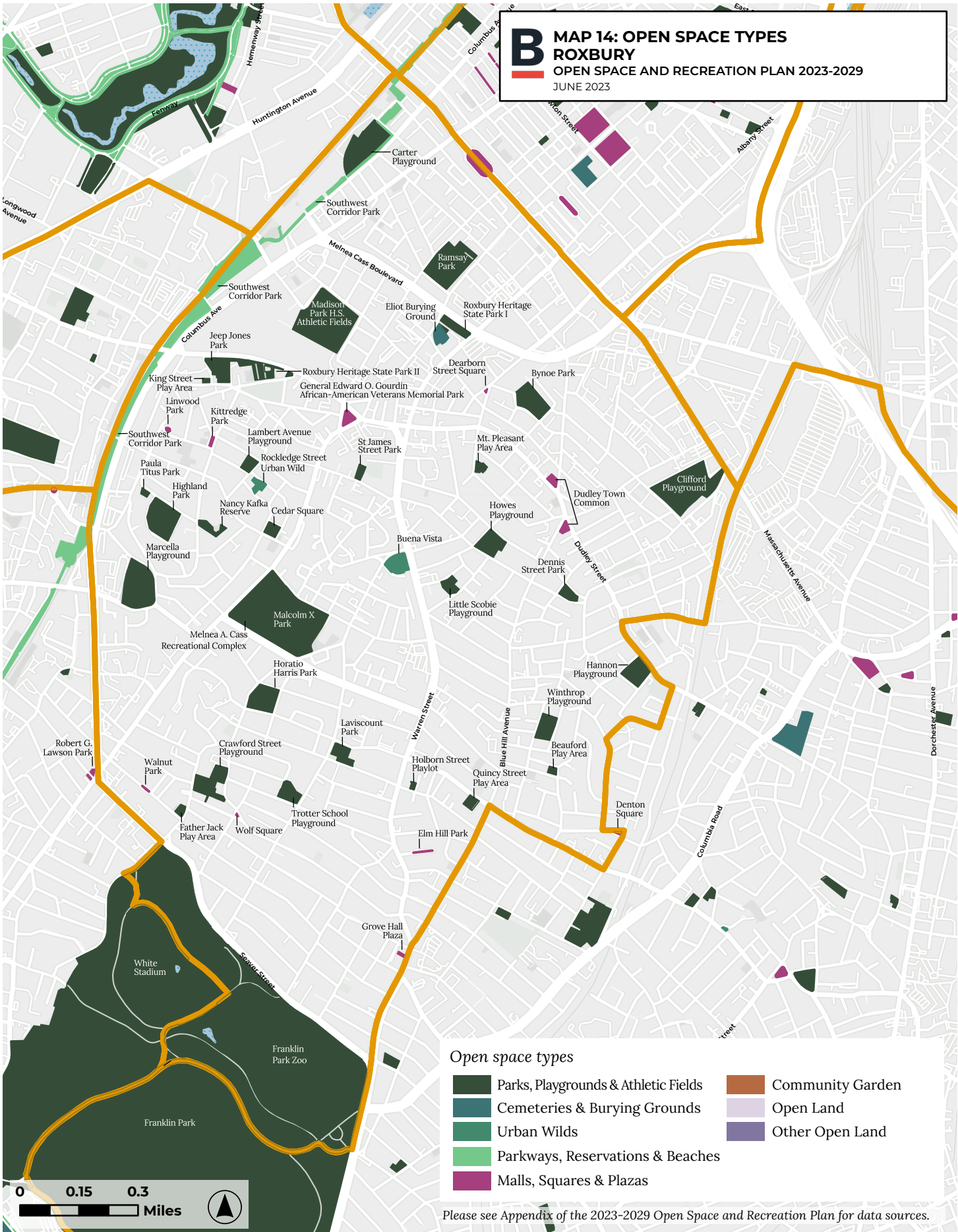
Please see Appendix of the 2023-2029 Open Space and Recreation Plan for data sources.

B MAP 12: OPEN SPACE OWNERSHIP
ROXBURY
 OPEN SPACE AND RECREATION PLAN 2023-2029
 JUNE 2023



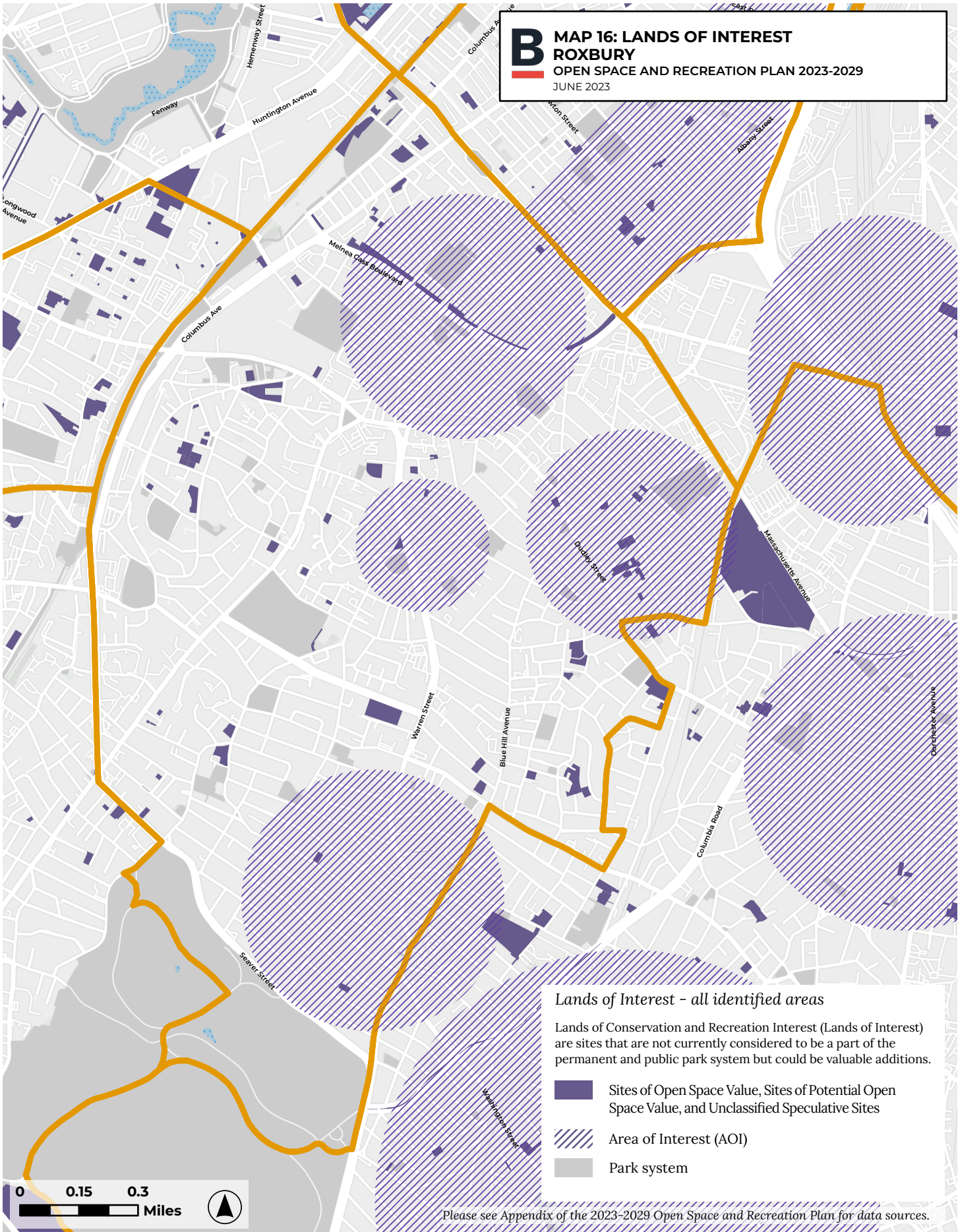
Please see Appendix of the 2023-2029 Open Space and Recreation Plan for data sources.

B MAP 14: OPEN SPACE TYPES
ROXBURY
 OPEN SPACE AND RECREATION PLAN 2023-2029
 JUNE 2023

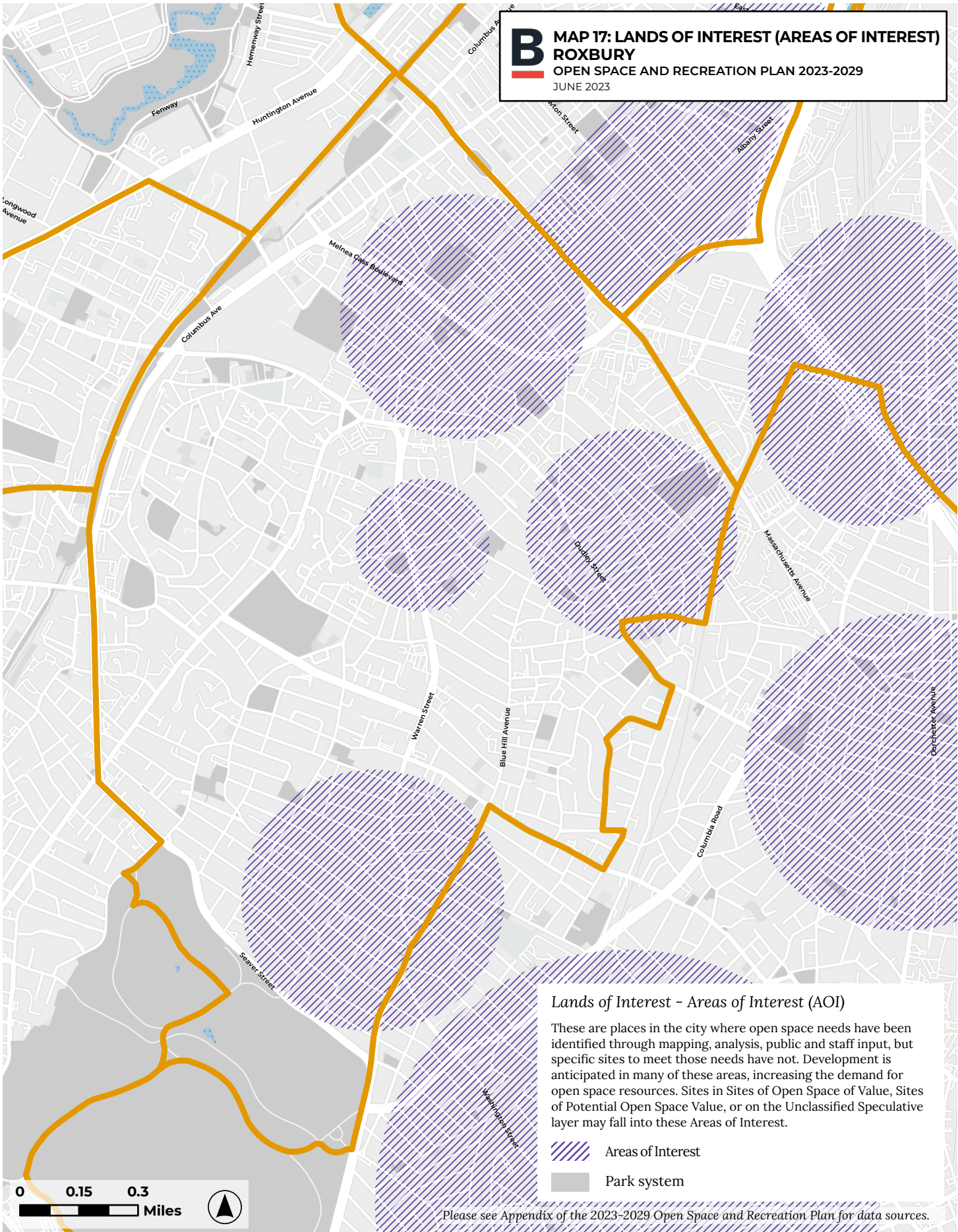


Please see Appendix of the 2023-2029 Open Space and Recreation Plan for data sources.

B MAP 16: LANDS OF INTEREST
ROXBURY
 OPEN SPACE AND RECREATION PLAN 2023-2029
 JUNE 2023





B MAP 17: LANDS OF INTEREST (AREAS OF INTEREST)
ROXBURY
OPEN SPACE AND RECREATION PLAN 2023-2029
JUNE 2023



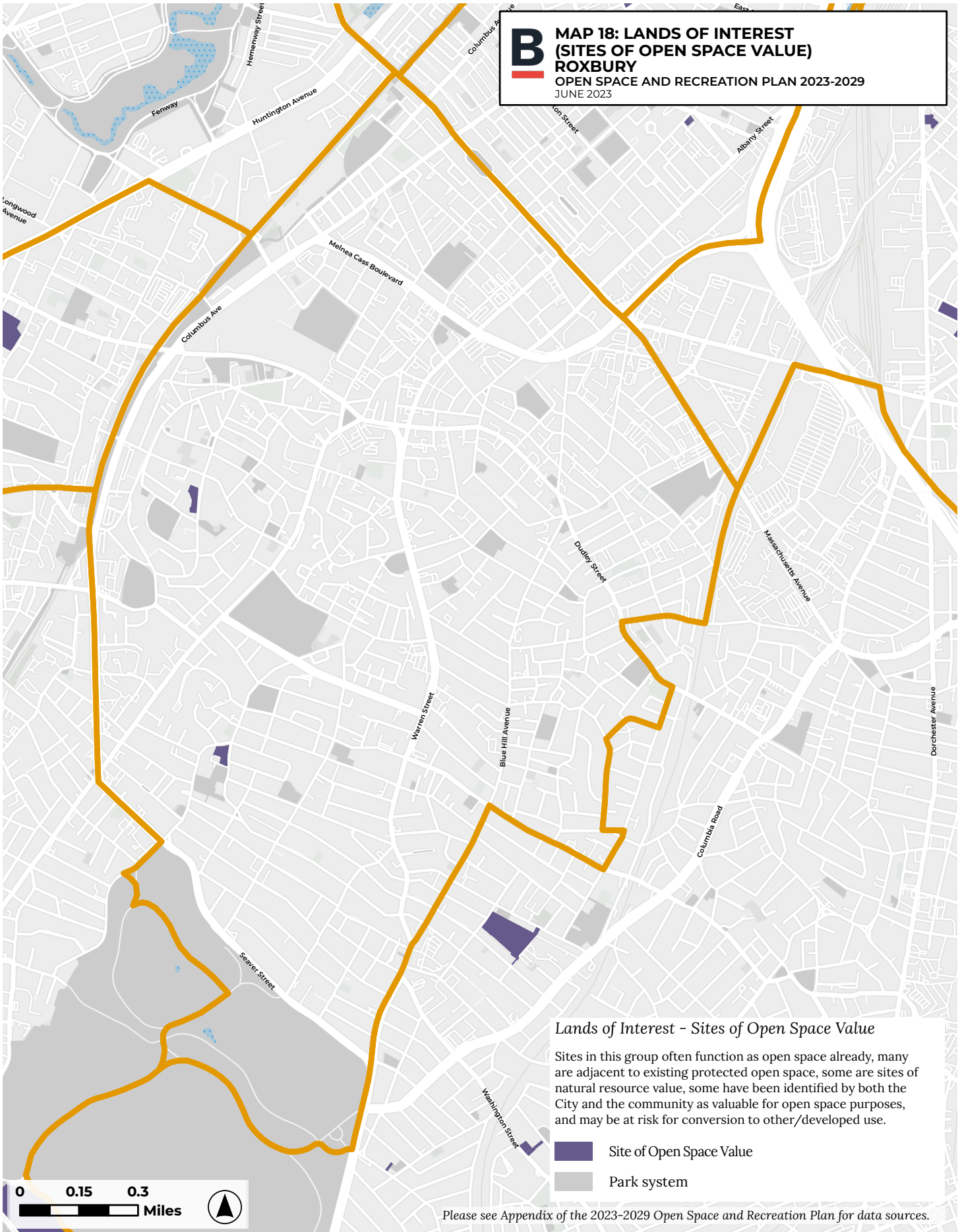
Lands of Interest - Areas of Interest (AOI)

These are places in the city where open space needs have been identified through mapping, analysis, public and staff input, but specific sites to meet those needs have not. Development is anticipated in many of these areas, increasing the demand for open space resources. Sites in Sites of Open Space of Value, Sites of Potential Open Space Value, or on the Unclassified Speculative layer may fall into these Areas of Interest.

-  Areas of Interest
-  Park system

Please see Appendix of the 2023-2029 Open Space and Recreation Plan for data sources.

B MAP 18: LANDS OF INTEREST
 (SITES OF OPEN SPACE VALUE)
 ROXBURY
 OPEN SPACE AND RECREATION PLAN 2023-2029
 JUNE 2023



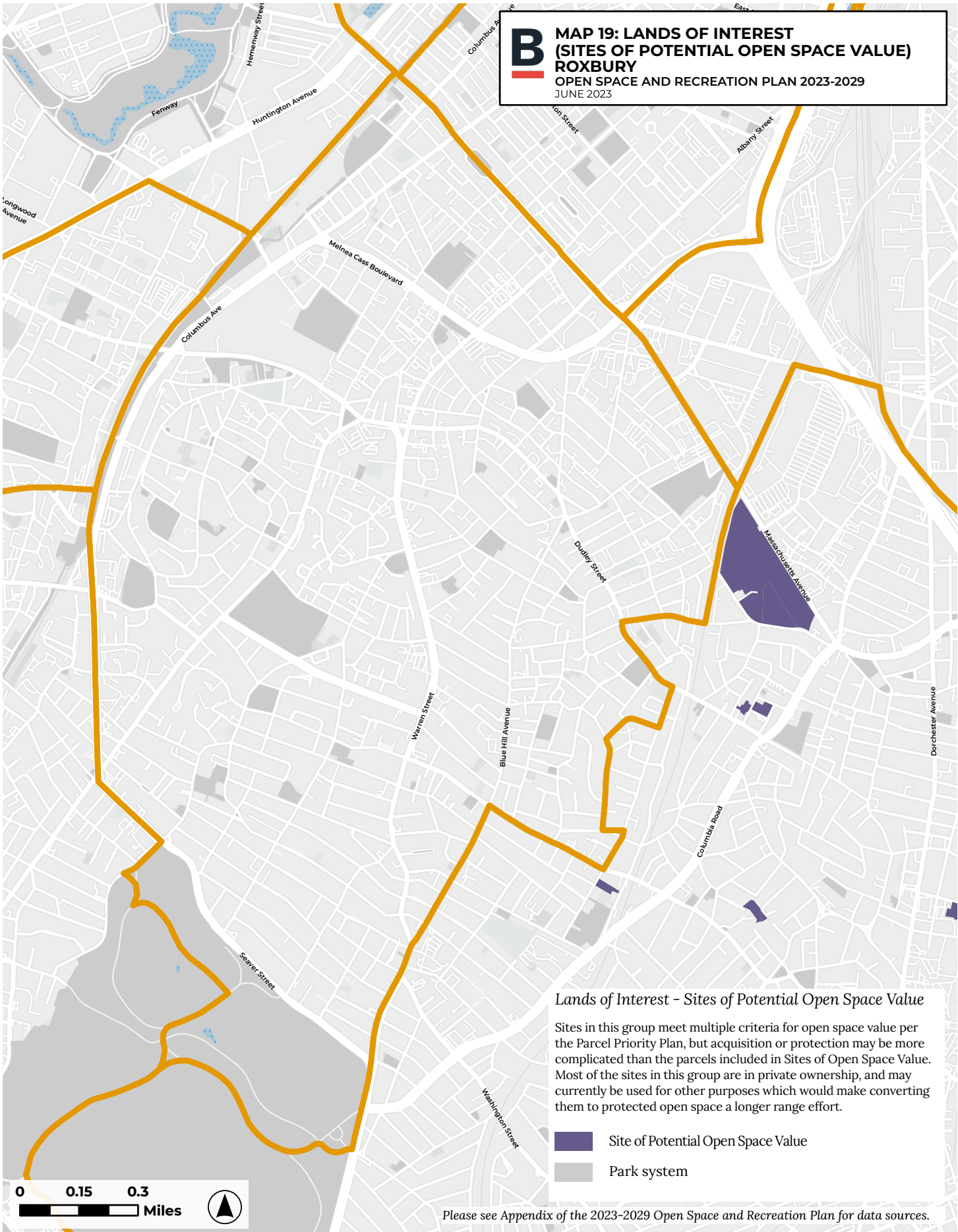
Lands of Interest - Sites of Open Space Value

Sites in this group often function as open space already, many are adjacent to existing protected open space, some are sites of natural resource value, some have been identified by both the City and the community as valuable for open space purposes, and may be at risk for conversion to other/developed use.

- Site of Open Space Value
- Park system

Please see Appendix of the 2023-2029 Open Space and Recreation Plan for data sources.

B MAP 19: LANDS OF INTEREST
 (SITES OF POTENTIAL OPEN SPACE VALUE)
 ROXBURY
 OPEN SPACE AND RECREATION PLAN 2023-2029
 JUNE 2023



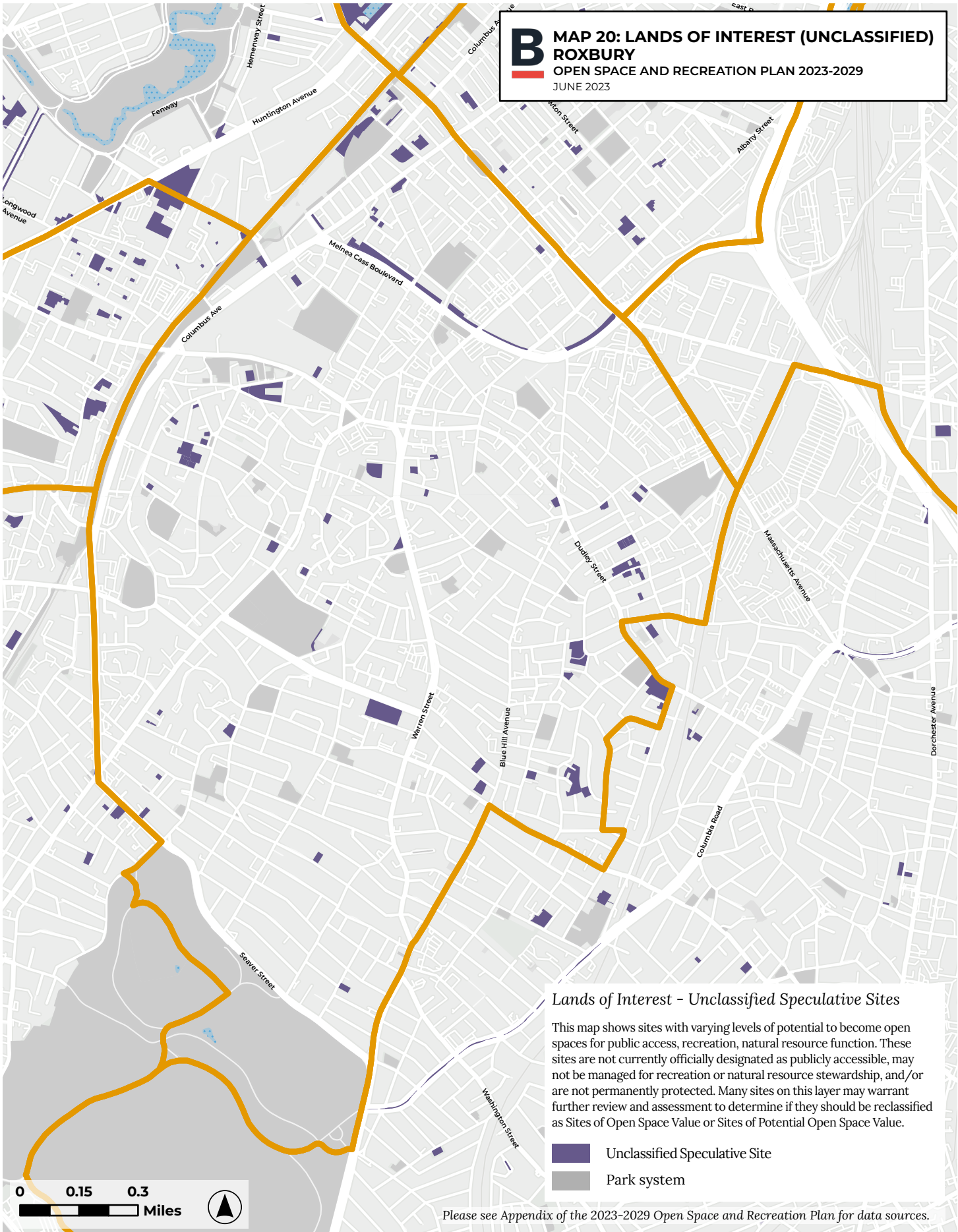
Lands of Interest - Sites of Potential Open Space Value

Sites in this group meet multiple criteria for open space value per the Parcel Priority Plan, but acquisition or protection may be more complicated than the parcels included in Sites of Open Space Value. Most of the sites in this group are in private ownership, and may currently be used for other purposes which would make converting them to protected open space a longer range effort.

- Site of Potential Open Space Value
- Park system

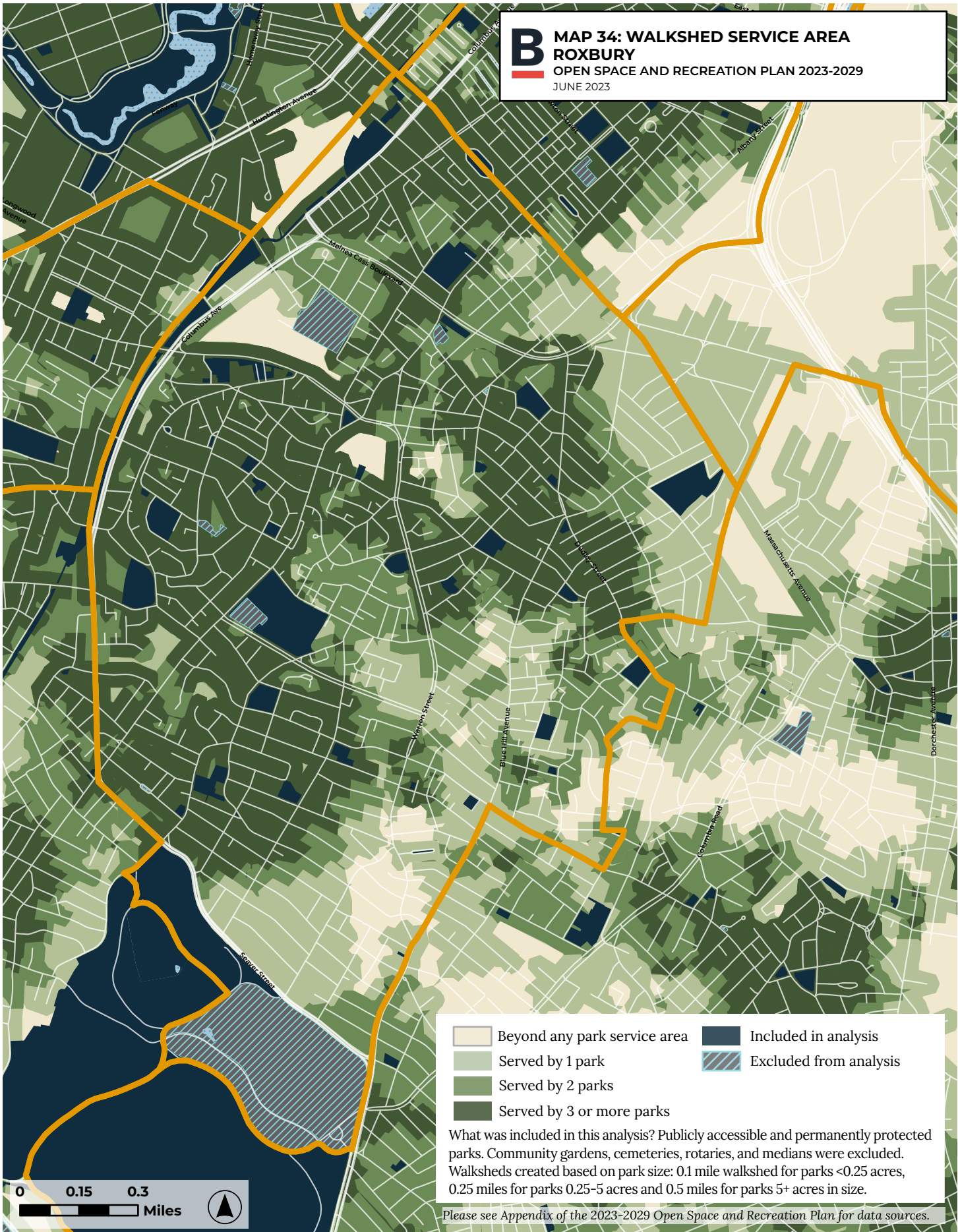
Please see Appendix of the 2023-2029 Open Space and Recreation Plan for data sources.

B MAP 20: LANDS OF INTEREST (UNCLASSIFIED)
ROXBURY
 OPEN SPACE AND RECREATION PLAN 2023-2029
 JUNE 2023



Please see Appendix of the 2023-2029 Open Space and Recreation Plan for data sources.

B MAP 34: WALKSHED SERVICE AREA
ROXBURY
 OPEN SPACE AND RECREATION PLAN 2023-2029
 JUNE 2023

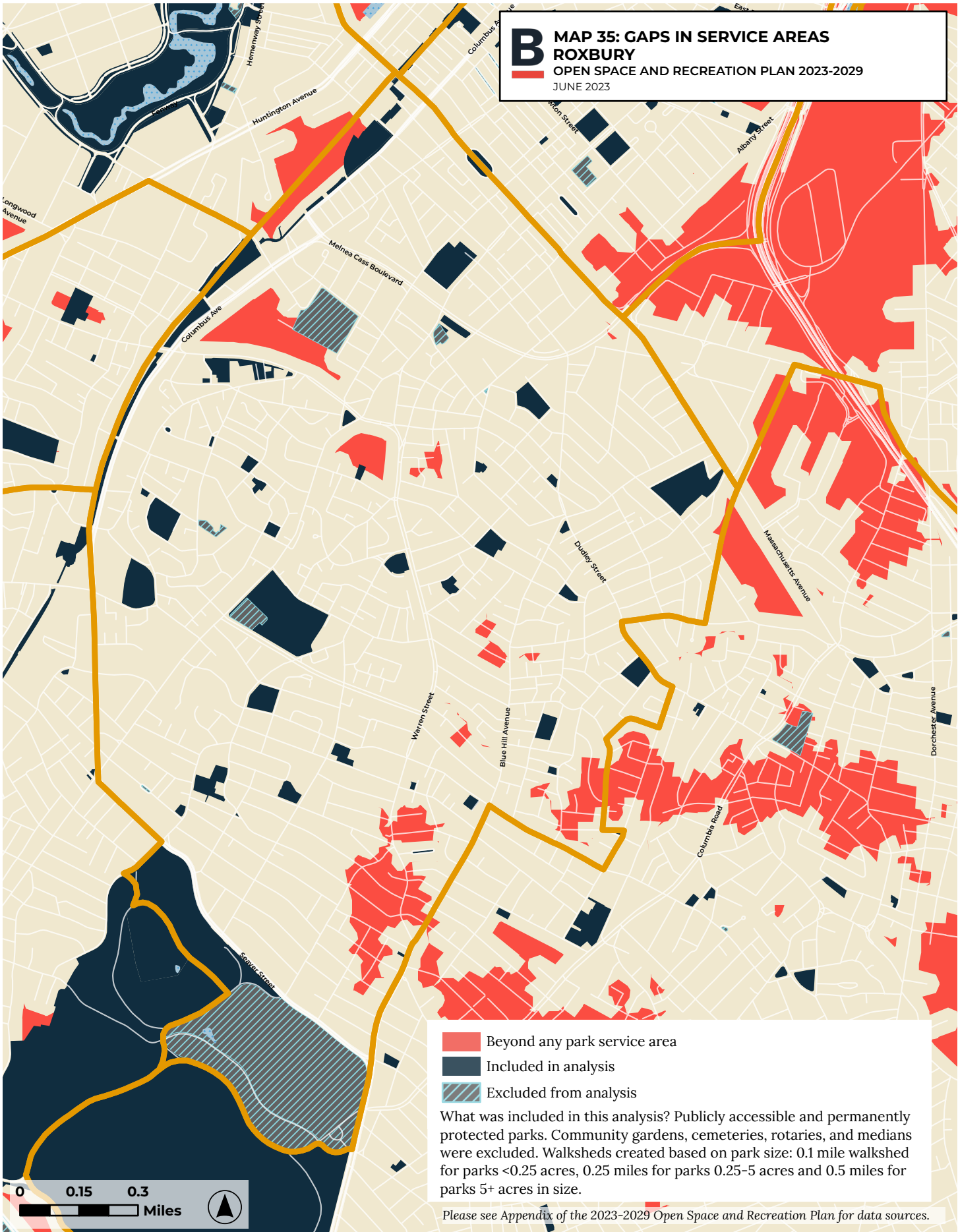


- Beyond any park service area
- Served by 1 park
- Served by 2 parks
- Served by 3 or more parks
- Included in analysis
- Excluded from analysis

What was included in this analysis? Publicly accessible and permanently protected parks. Community gardens, cemeteries, rotaries, and medians were excluded. Walksheds created based on park size: 0.1 mile walkshed for parks <0.25 acres, 0.25 miles for parks 0.25-5 acres and 0.5 miles for parks 5+ acres in size.

Please see Appendix of the 2023-2029 Open Space and Recreation Plan for data sources.

B MAP 35: GAPS IN SERVICE AREAS
ROXBURY
 OPEN SPACE AND RECREATION PLAN 2023-2029
 JUNE 2023

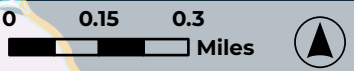
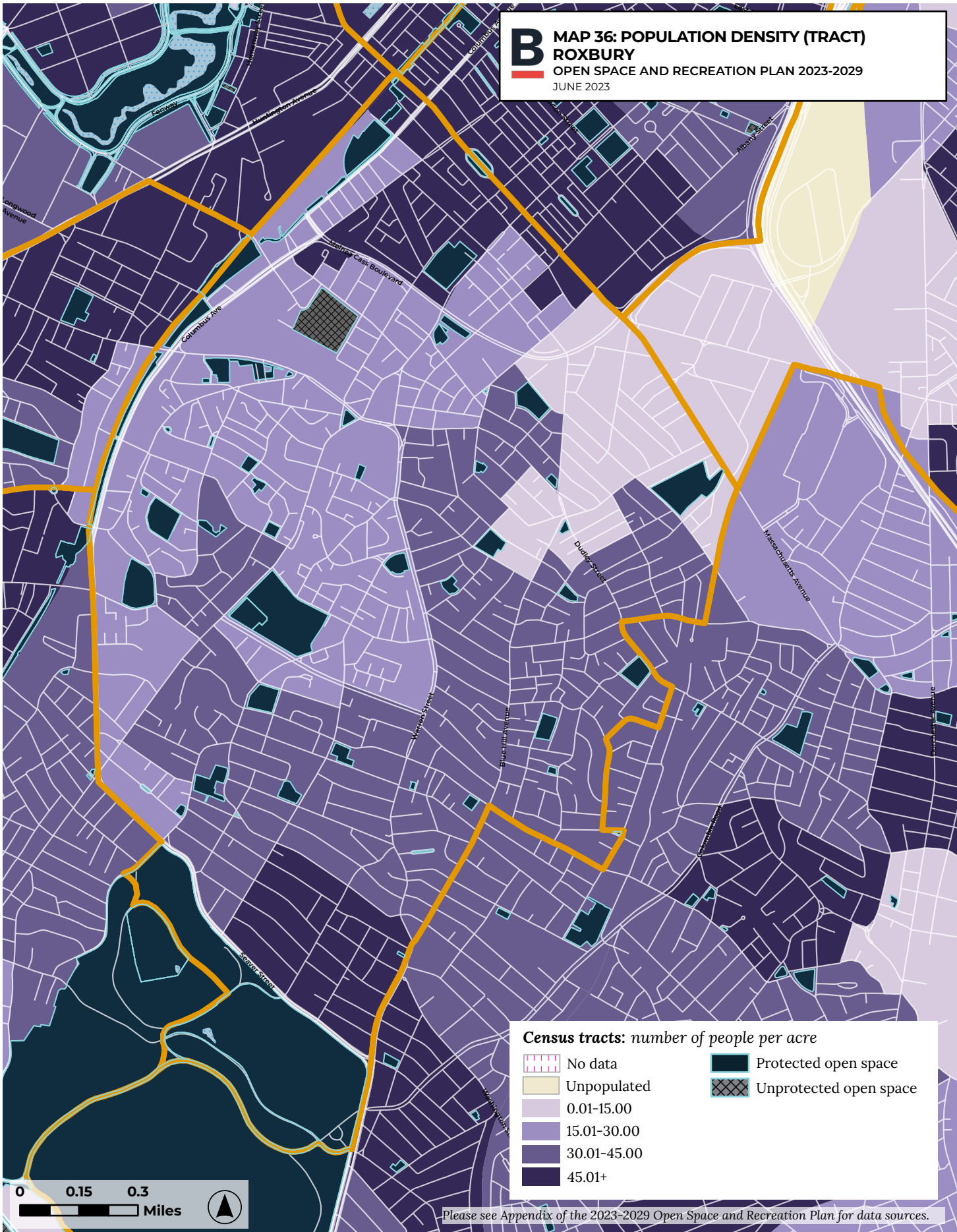


Beyond any park service area
 Included in analysis
 Excluded from analysis

What was included in this analysis? Publicly accessible and permanently protected parks. Community gardens, cemeteries, rotaries, and medians were excluded. Walksheds created based on park size: 0.1 mile walkshed for parks <0.25 acres, 0.25 miles for parks 0.25-5 acres and 0.5 miles for parks 5+ acres in size.

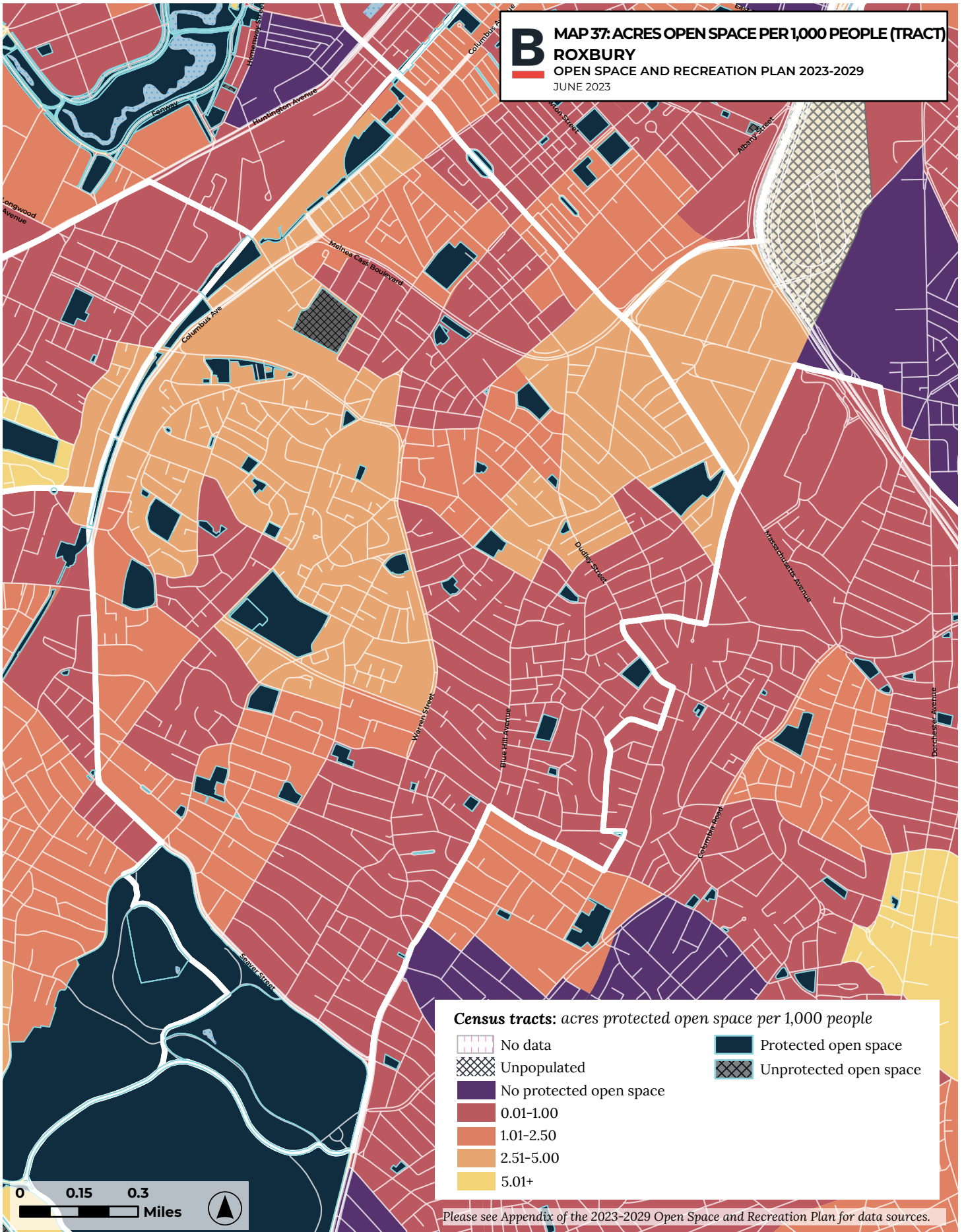
Please see Appendix of the 2023-2029 Open Space and Recreation Plan for data sources.

B MAP 36: POPULATION DENSITY (TRACT)
ROXBURY
OPEN SPACE AND RECREATION PLAN 2023-2029
JUNE 2023

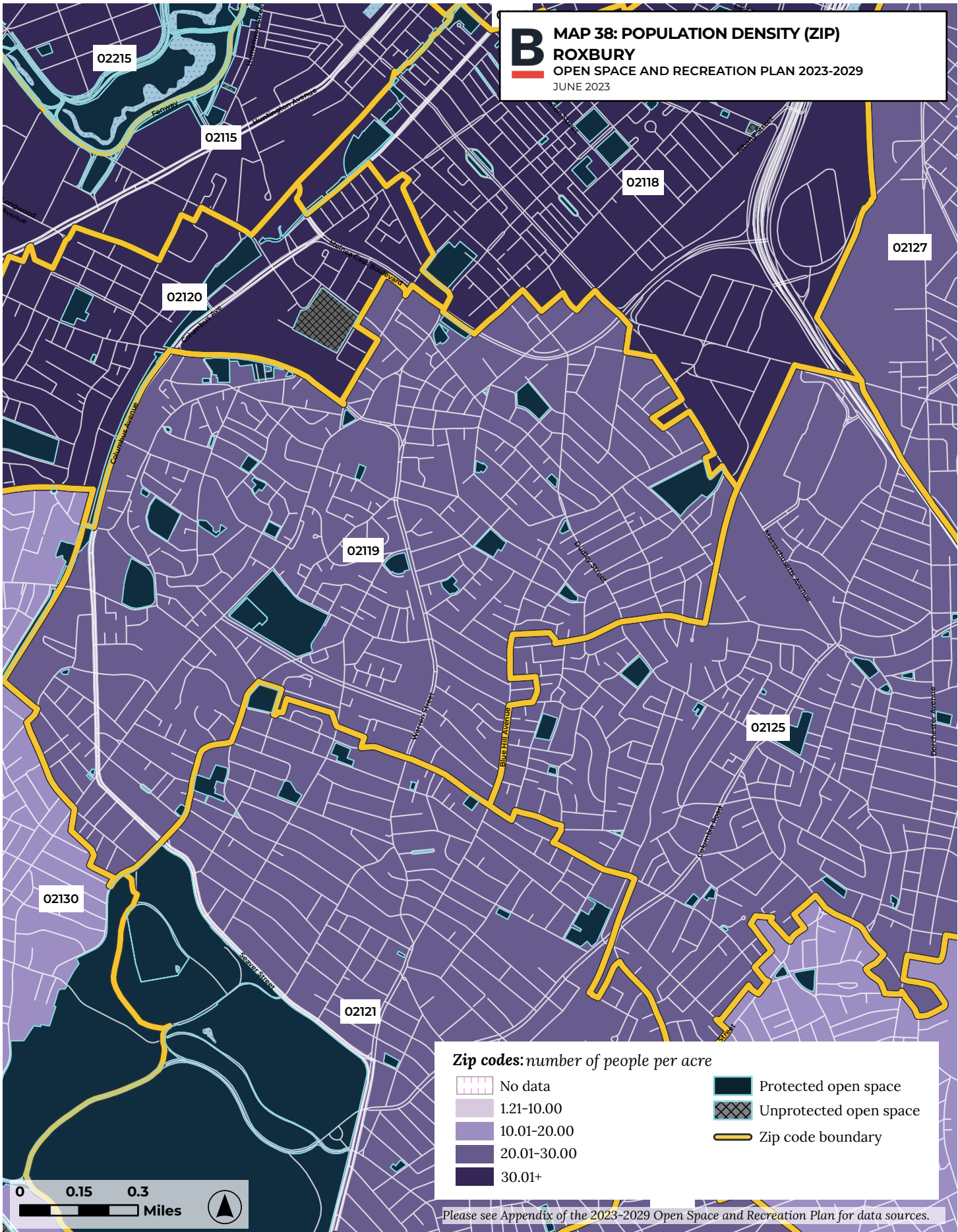


Please see Appendix of the 2023-2029 Open Space and Recreation Plan for data sources.

B MAP 37: ACRES OPEN SPACE PER 1,000 PEOPLE (TRACT)
ROXBURY
 OPEN SPACE AND RECREATION PLAN 2023-2029
 JUNE 2023



B MAP 38: POPULATION DENSITY (ZIP)
ROXBURY
 OPEN SPACE AND RECREATION PLAN 2023-2029
 JUNE 2023



Please see Appendix of the 2023-2029 Open Space and Recreation Plan for data sources.

B MAP 39: ACRES OPEN SPACE PER 1,000 PEOPLE (ZIP)
ROXBURY
 OPEN SPACE AND RECREATION PLAN 2023-2029
 JUNE 2023

