

White Stadium



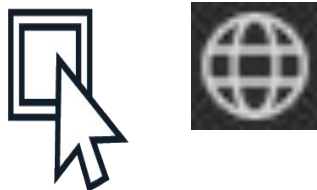
Community Engagement Meeting 2:
***Economic Development, Community
Benefits, and Supplier Diversity***

- Spanish:** Para traducción en **Español**,
1. Vaya a la parte baja de la pantalla, en la barra horizontal, y presione la tecla “*Interpretation*”.
 2. Luego seleccione el idioma que desea escuchar.
 3. Después de seleccionar, usted entrará a la reunión en el idioma “*Español*”.

- Haitian Creole:** Pou entèpretasyon **Kreyòl ayisyen**,
1. Ale nan kontwòl ba nan pati anba ekran an epi Klike sou “*Interpretation*.”
 2. Apre sa, klike sou lang ke ou ta renmen tande a.
 3. Kounye a ou gen aksè a reyinyon an *Kreyòl ayisyen*.

- Cabo Verdean Creole:** Gossim bu ta entra na reuniao na **kriolu**,
1. Bai na barra de controlo horizontal na parte inferior di computador bu kalka na “*Interpretation*”.
 2. Depos kalka na idioma qui bu kre ovi.
 3. Agora djabu sta ta entra na reuniaun em *creole*.

1.



2.



3.



Meeting Purpose

Share the City and Boston Unity's draft plans for the interconnected topics of Economic Development, Supplier Diversity, and the Community Benefits fund, and hear feedback.

Agenda

1. Project background and timeline
2. City of Boston supplier diversity and workforce development
3. Boston Unity economic development and supplier diversity plan
4. Community Benefits Fund

An aerial view of Boston, Massachusetts, rendered in a white line-art style on a dark blue background. The map shows the city's layout, including major roads, parks, and the harbor. The text "1. Project Background" is overlaid in the center in a large, white, sans-serif font.

1. Project Background

BACKGROUND: White Stadium

Location: Playstead section of Franklin Park in Roxbury

Overview

- Stadium in disrepair due outdated infrastructure and a fire
- Built in 1945
- Stadium has and will continue to be a place for the community to enjoy

Existing Space

- Seats 10,000
- Run by Boston Public Schools
- Numerous uses including community events and BPS athletics



THE VISION: Restore White Stadium as a treasure of BPS Athletics.



As part of the Green New Deal for BPS, Mayor Wu announced a commitment to transformative investment in White Stadium.

We envision the renovation of White Stadium as an opportunity to revitalize and reimagine this space as a hub for BPS Athletics and local community groups.

- Access to state-of-the-art athletic facilities
- Space to build leadership skills on and off the fields
- Space to improve community health and wellness
- Opportunities to build partnerships to benefit students and community members for long-term career readiness

THE VISION: Restore White Stadium as a treasure of BPS Athletics.



East Grandstand

30,000 sf

In place of the existing east grandstand a new grandstand would be constructed to include 5,000 seats and concessions and restrooms to support stadium events. Locker rooms would be located under the grandstand on each end for BPS field sports.



Community Space

2,000 sf

At the central portion of the grandstand would be a Community Space w/ a terrace overlooking the field and could be used for team banquets, award ceremonies, or community gatherings. During soccer games the space could be used as a suite with ticketed admission.

Boston Public Schools Department of Athletics

10,000 sf

The building on the north side of the grandstand would house locker rooms and Boston Public School athletic equipment distribution program on the first level. BPS Athletics offices would be on the upper level overlooking the field to the west.

400 Meter Track & Playing Field

The existing track would be replaced with an 8 lane 400 meter track to host MIAA track and field events. The new playing field would be large enough to host professional or collegiate level soccer and would also remain home for BPS field sports.

Throwing sports (discus, shotput) would be located in the southeast corner of the site, accessible from locker rooms in the east grandstand and spectator seating would be placed near the south fence line.



Strength & Conditioning Sports Medicine Suite

10,000 sf

The lower level would be focused around a collegiate level strength training area for students to train in and out of season. Adjacent to the training floor would be a sports medicine program with training and treatment areas along with office space for athletic training staff on the upper level.

Student Resource Space

3,500 sf

Space would be provided for student to use in-between practices, games, or after school space to study, gather, or meet with coaches. This area of the building would include a 50 person classroom and flexible seating overlooking the field that could support a variety of uses.

West Grandstand

45,000 sf

The renovated West Grandstand would provide seating, concessions, restrooms, and professional teams' locker rooms. The interior would also have space for the NWSL teams' staff.

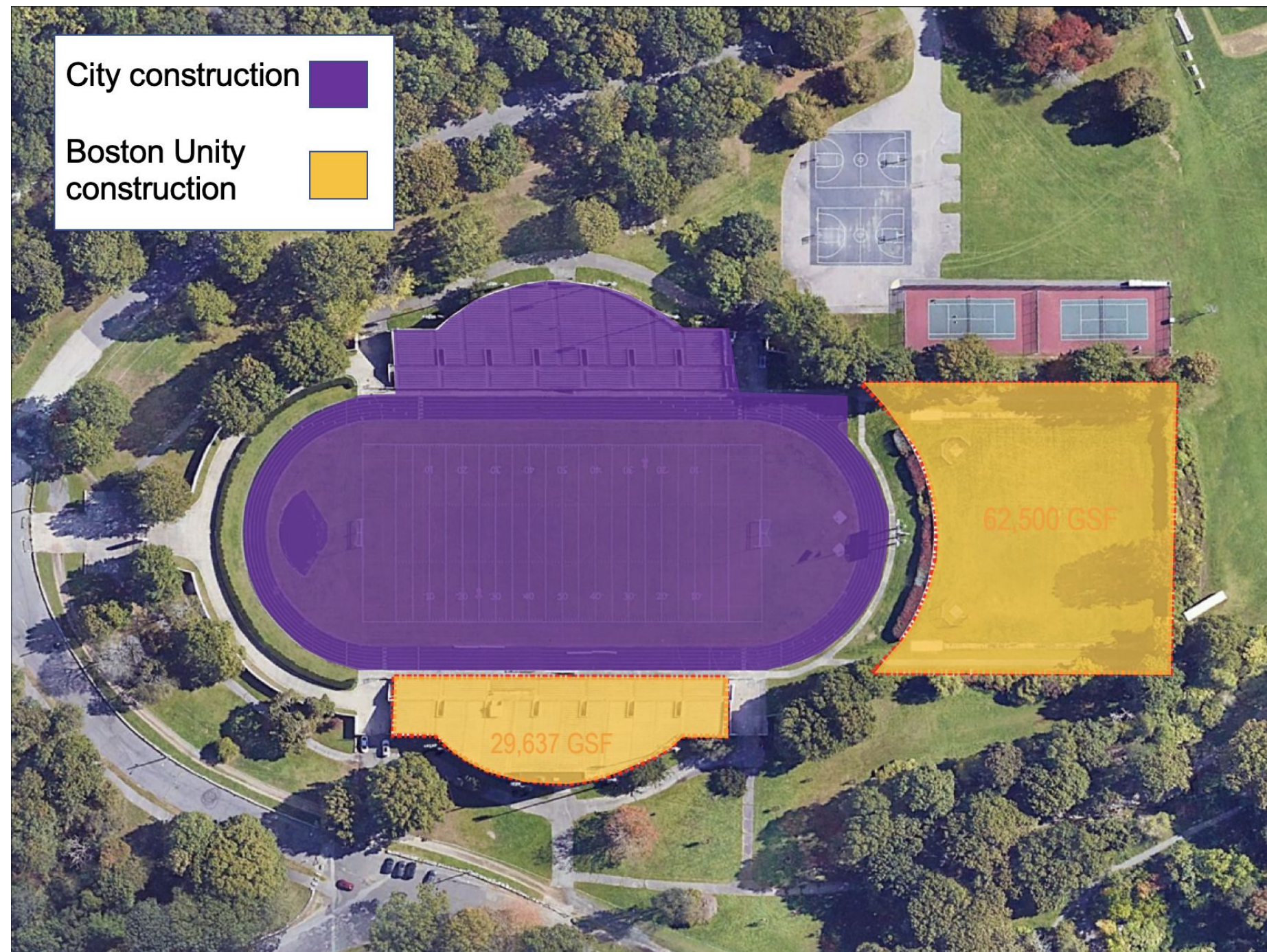
Public Private Partnership

A unique public-private partnership between the City of Boston and Boston Unity Soccer Partners LLC will deliver an exciting future for White Stadium:

- A world class stadium for BPS athletes and community groups
- A new professional women's soccer team - 20 games per year
- Activated event space in the fenced-in area south of the track
- Two simultaneous construction projects with unified design



Public Private Partnership



Project Timeline

- *Winter-Spring 2023*: Programming Study to identify BPS Athletics needs and wishlist
- *April 2023*: Issued Request for Proposals (RFP) to lease a portion of the stadium (14%) for a program that will complement and uplift BPS athletics and provide funding for renovations
- *June 2023*: Received one proposal from Boston Unity Soccer Partners (BUSP)
- *July 2023*:
 - Hosted community meeting on July 13
 - Released FAQ to address feedback and comments raised in first community session
 - Evaluation committee designated BUSP as the preferred proponent for the lease
- *Fall/Winter 2023*: Host community engagement series by theme to update design plans

Community Engagement

We are hosting a series of community meetings based on the themes we've heard from community feedback:

1. Transportation management (September 27 and October 4)
2. Supplier diversity and community benefits (November 29)
3. BPS athletics and community uses
4. Alignment with the Franklin Park Action Plan
5. Stadium Design - multiple meetings

All information available on boston.gov/white-stadium

Send questions to whitestadium@boston.gov



2. City of Boston: supplier diversity and workforce development

Equity in City Contracting

- The City is committed to building generational wealth and opportunities for MBEs, WBEs, veteran-owned businesses, and LGBTQ owned businesses through various initiatives to foster economic growth.
- **2021 Executive Order:** Established equitable procurement goals in support of minority and women-owned businesses
- Since 2021, the City has raised the percentage of contracts awarded to minority owned businesses by 13%



boston.gov/supplier-diversity

Critical Commitments

- **Supplier Diversity Compact:** Collaborative commitment among key stakeholders to share and uphold supplier diversity goals
- **Sheltered Market Program:** Reserves selected City of Boston contracts for minority- and women-owned businesses



Key Supplier Diversity Programs

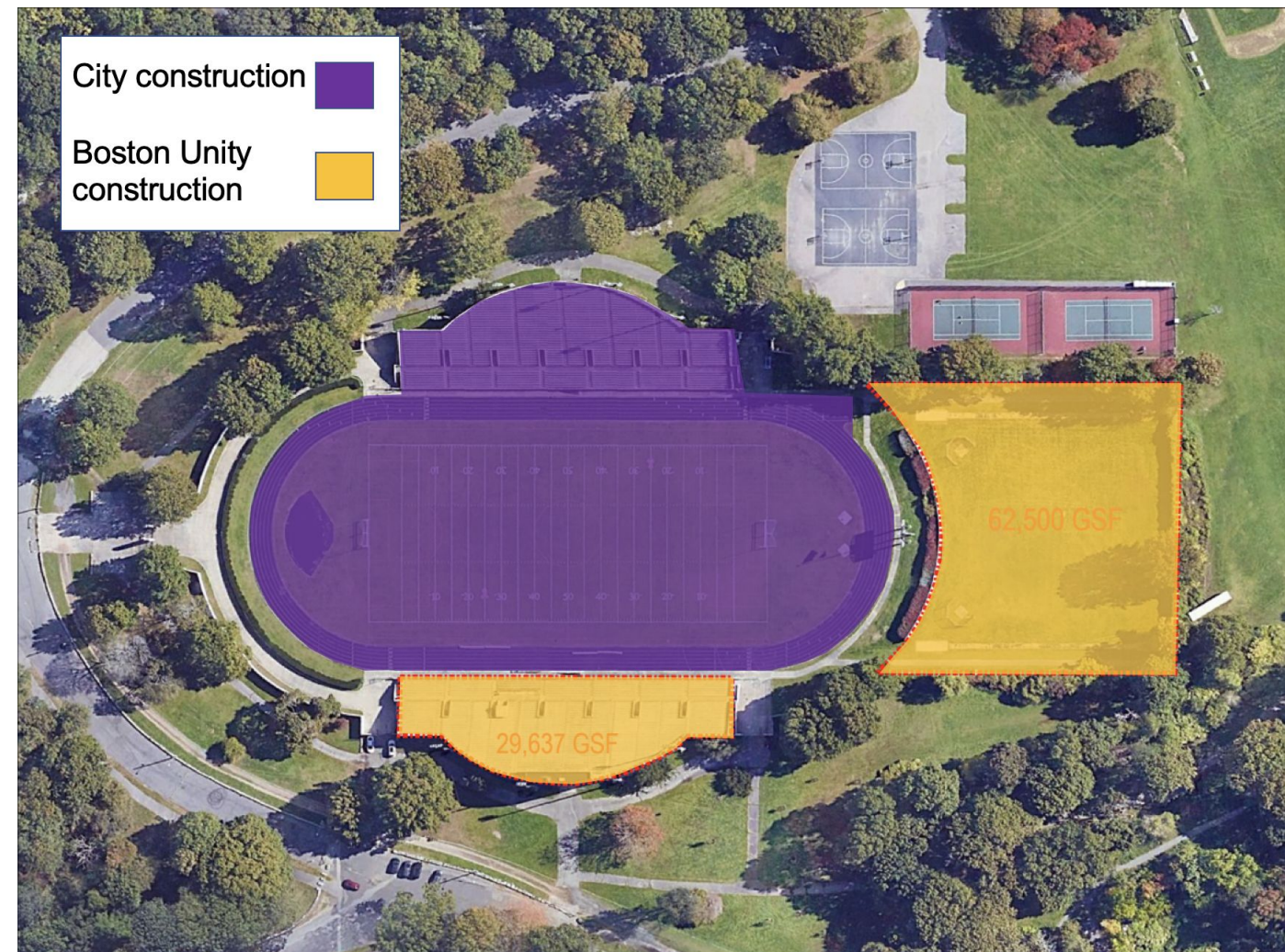
Leveling the playing field for historically disadvantaged businesses pursuing City contracts:

- **Business Certification Program:** Certification of businesses as MBEs, WBEs, SLBEs, and Veteran-owned.
- **Contracting Opportunity Fund:** Provides grants, up to \$15,000, to increase capacity for small, local businesses in construction, design, professional services, and goods.
- **Pathways to City Contracting Fairs:** Empower businesses to submit successful bids and navigate City procurement processes effectively.
- **SCALE Accelerator:** Supports local businesses with grant funding, technical assistance, and educational support



Supplier diversity in City construction

- The City will set targets for MWBE participation in the City's portion of the White Stadium construction project
- To do so, there are specific processes and rules the City must follow
- We are early in the process and will be able to set specific goals when we are further along in design.



Examples - Malcolm X Park and 26 Court Street

Project Name	Malcolm X Park Improvements	26 Court Street Renovations*
MBE Goal (%)	2.5%	13.3%
MBE Actual (%)	2.5%	-
MBE Actual (\$)	\$221,275.00	-
WBE Goal (%)	4.8%	8.5%
WBE Actual (%)	10.8%	-
WBE Actual (\$)	\$955,908.00	-
Total Actual (%)	13.3%	-
Total Actual (\$)	\$1,177,183.00	-

**26 Court Street: While final pricing is pending, the CM is on track to meet or exceed both MBE and WBE targets.*

Workforce Development

The **Office of Workforce Development (OWD)** works toward the full participation of all Boston residents in the city's economic vitality and future. It connects low-income residents with job training and employment opportunities.



Workforce Development

Boston Resident Jobs Policy on Construction Projects

Private development projects over 50,000 square feet and any public development project must meet the following employment standards:

- \geq 51 percent of the total work hours of journey people to Boston residents
- \geq 40 percent of the total work hours of journey people go to people of color, and
- \geq 12 percent of the total work hours of journey people go to women.
- Apprentice goals - 51% Boston residents, 40% People of Color, 12% Female

ORDINANCE AMENDING THE BOSTON RESIDENTS JOBS POLICY AND BOSTON EMPLOYMENT COMMISSION

WHEREAS, the City of Boston expends substantial funds on construction projects to develop, repair, and maintain municipal facilities and infrastructure; and

WHEREAS, public funds spent by the City of Boston on construction projects are derived from taxes paid by Boston residents; and

WHEREAS, the City of Boston advances the public interest by ensuring all construction projects under its purview are constructed and administered in accordance with plans, specifications, and contract provisions furthering the economic inclusion policies of the City and promoting economic opportunities for Boston residents, people of color, and women; and



3. Boston Unity economic development and supplier diversity plan

White Stadium

Supplier Diversity & Community Benefits

PROJECT UPDATE | November 29, 2023



Able
company

Stantec

MOODY•NOLAN

CITY OF BOSTON

BOSTON PUBLIC SCHOOLS

White Stadium

BUSP Community Meeting

AGENDA

- Community Engagement
- Supplier Diversity/Economic Benefits
- Diversity & Inclusion Planning
- Community Benefits



BUSP COMMUNITY ENGAGEMENT

December 2022 – July 2023

Elected Officials

- US Congresswoman Ayanna Pressley’s Office, Chief of Staff Sarah Groh
- City Councilor Tania Fernandez-Anderson (1/26, 3/13, 6/12 with District 7 Council)
- City Councilor at Large Ruthzee Louijeune
- City Council President Ed Flynn
- City Councilor at Large Mike Flaherty
- State Representative Russell Holmes
- Former State Senator Linda Dorcena Forry

Economic Development Organizations

- Roxbury Main Streets Board, Robert George Exec. Director
- Ed Gaskin, JacQuie Cairo-Williams, Karen Bunch, Greater Grove Hall Main Streets
- Denise Delgado, Egleston Square Main Streets
- Nicole Obi, BECMA
- Jen Faigel, Commonwealth Kitchen

Youth Soccer Organizations

- Bridget Colvin + Board of Directors, Jamaica Plain Youth Soccer
- Caroline Foscatto, South End Soccer and Soccer Unity Project
- Harold Miller, Coach and Girls’ Director, Dorchester Youth Soccer
- Ivelisse Mendoza & Andy Crossley, Boston Scores

Community Organizations and Neighborhood Associations

- The Franklin Park Coalition (12/6, 12/12, 6/21)
- The District 7 Strategic Advisory Council
- Egleston Square Neighborhood Association (scheduled for 8/7)
- Dr Charles Anderson, The Dimock Center
- Frederica Williams, Whittier Street Health Center
- Charley Murphy & Jessica DeRosa, Harvard Street Health Center

Citizens and General Community Leaders

- Imari Paris Jeffries, Embrace Boston
- Orlando Watkins, The Boston Foundation
- John Tobin, Northeastern University
- John Linehan, Zoo New England (Board Meeting planned for August)
- Jean McGuire

Youth Development Organizations

- Beth Chandler, YWCA
- David Shapiro & Kathryn Saunders, YMCA
- Robert Lewis, Boys and Girls Clubs of Boston
- Sara Kilroy, Boston Partners in Education
- Alexandra Oliver, Sociedad Latina
- Annissa Essaibi George, Big Sister

Community Engagement Since July: Ongoing Neighborhood Discussions to Advance Our Plan

Neighborhood Associations:

Parkside/Franklin Park Coalition
Garrison Trotter Neighborhood
Association
Jamaica Plain Neighborhood Council
(upcoming)
Greater Mattapan Neighborhood Council
Egleston Square Neighborhood
Association

City of Boston Collaboration and Planning:

Boston Transportation Department
Tourism, Sports, & Entertainment City
Advisor
Worker Empowerment Cabinet
Office of Youth Empowerment &
Opportunity

Key Stakeholders:

Black Economic Council of
Massachusetts-Ally member
Mass Black Expo - Sponsor and Panel
Participant
Amplify LatinX
Boston Main Streets Foundation
BAMS Fest
Zoo New England
Boston Scores 25th Anniversary Celebration
- Changemaker Award Recipient
Meet Boston

Public Meetings:

Parking and Transportation - 9/27/23
Parking and Transportation - 10/4/23

ASPIRATIONAL VISION FOR THE FUTURE OF WHITE STADIUM

The programmatic vision for the Boston Public Schools and Boston Unity partnership is holistic, taking into account both the stadium renovation as well as landscape activation of Franklin Park.

WALK
OVERLOOK
CANOPY

THE
GROVE

LANDFORM

PLAYSTEAD



share what the club means t you. LET'S HEAR YOU! Tag #NWSLBOSTON and share what the club means t you. LET'S HEAR YOU! Tag #NWSLBOSTON and share what the club means t you. LET'S HEAR YOU! Tag #NWSLBOSTON and share what the club means t you. LET'S HEAR YOU! Tag #NWSLBOSTON and share what the club means t you. LET'S HEAR YOU! Tag #NWSLBOSTON and share what the club means t you. LET'S HEAR YOU!

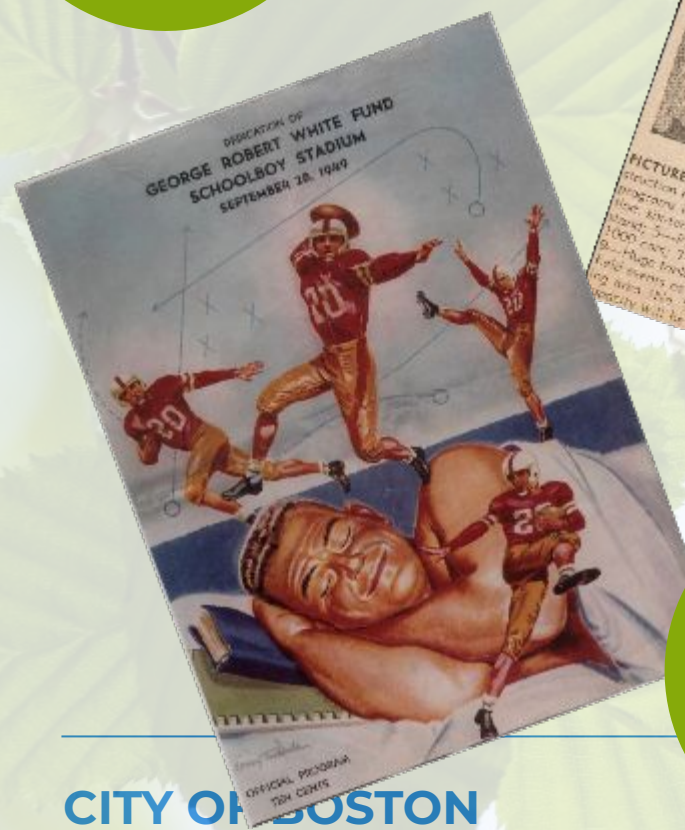
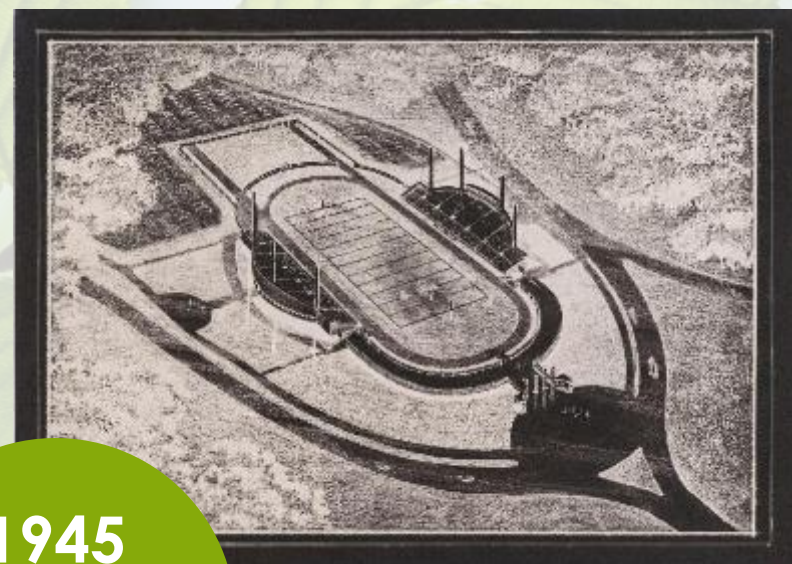
WEAR #NWSLBOSTON visit the ProShop at The Grove to get the latest merch! YOUR CLUB YOUR CITY WEAR #NWSLBOSTON visit the ProShop at

THE HISTORY OF WHITE STADIUM

When considering future programs on the site, we need to understand the history and importance of this place to the surrounding communities and City of Boston.

1945

Artist's architectural rendering of the prospective stadium



1949

Cover of the dedication ceremony pamphlet at the stadium's opening day

CITY OF BOSTON

1947

Newspaper clipping of an aerial photo of the stadium mid-construction



1969



1974

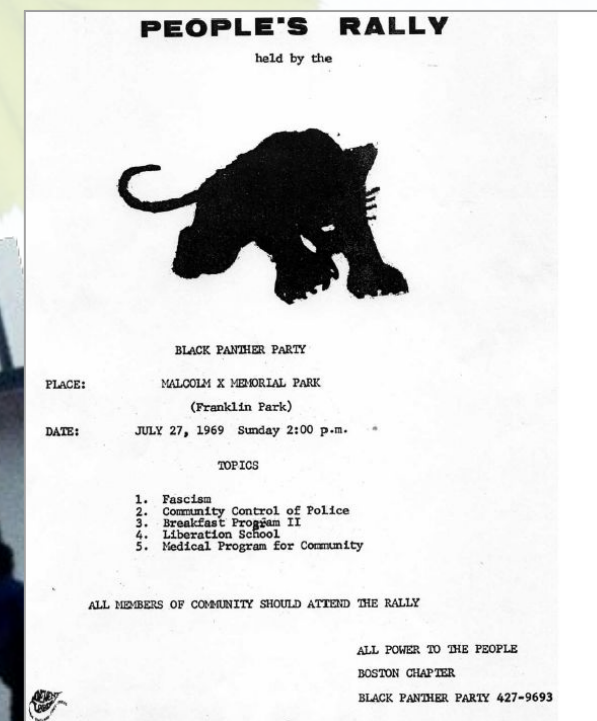
Concert series for the community ft. Tower of Power, The Isley Brothers & more (\$5.50 tickets)



2022



BOSTON PUBLIC SCHOOLS



THE HISTORIES OF WHITE STADIUM

BUSP is looking at ways to chronicle years of great moments that might be less well known but equally meaningful - THROUGH ART, DESIGN, AND DIGITAL MEDIA

SCHOOL EVENTS

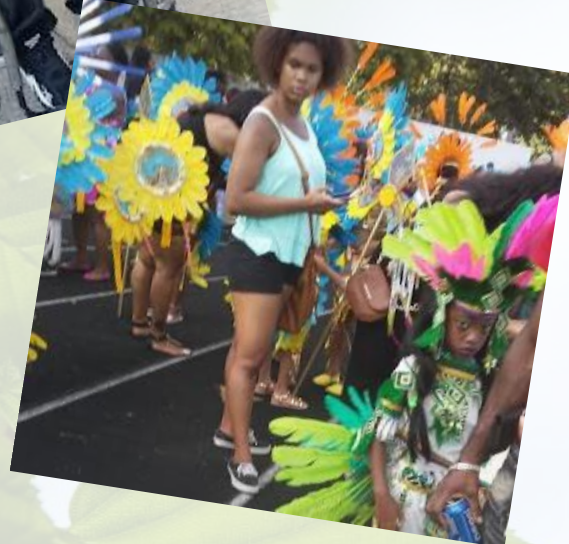
Go Team!



HARD WON

Champions & participants

BIG DAYS



HAVING FUN

With the family



PARADE

All decked out!



WHITE STADIUM HISTORIC FACADE & ROOF STRUCTURE

Careful attention has been paid to make the new 'leaf' rooftop shade structure respond to the plan geometry and curved façade of the existing White Stadium. The canopy sits behind - and appears to float above - the original concrete wall. It's light, soft forms are intended to be complementary to the heavier form of the stadium frontispiece, creating a dialogue between old and new rather than copying the Art Deco style original.



DIVERSITY STARTS AT THE TOP

BOSTON UNITY
SOCCER PARTNERS
LEAD OWNERSHIP

We are a diverse-female managed ownership group where 40% of the invested capital was invested by investors of color and 95% by women.



JENNIFER
EPSTEIN



STEPHANIE
CONNAUGHTON



AMI KUAN
DANOFF



ANNA
PALMER



JASMINE
ROBINSON



LINDA
WHITLOCK

We are committed to bringing a professional women’s soccer team to Boston, upgrading White Stadium, and substantially investing in Franklin Park and the neighborhoods surrounding it.

DIVERSITY AND INCLUSION PLAN

The BUSP’s overall mission is to create and grow a championship, professional women’s soccer team owned, managed, and operated by women.

We believe that women’s sports can be a force for good on and off the field and, through intentional partnership with members of the communities where we hope to live, work, and play, intend for BUSP to be a driver of wide-ranging and long-lasting benefits for all Bostonians and beyond.

A key goal of Boston Unity is to create community wealth. Local businesses in the communities surrounding Franklin Park also means minority business enterprises.

Achieving this means engaging Minority-Owned Businesses (“MBEs”) and Women-Owned Business Enterprises (“WBEs”) (collectively referred to as “WMBEs”) as key partners for the Project.

BUSP will center the Project through an equity lens and move forward ready to listen, learn, and partner in ways that are authentic, intentional, and considerate of the rich history and future aspirations of the community surrounding White Stadium.

BUSP has already begun to take steps to engage the community through outreach to local organizations and elected officials to gain a solid understanding of key concerns.

BUSP is also actively seeking opportunities for collaboration with members of the diverse communities of Dorchester, Jamaica Plain, Roxbury, Mattapan, the City of Boston and Boston Public Schools.

SUPPLIER DIVERSITY/ECONOMIC BENEFITS – PARTNERING LOCALLY FOR BUSINESS

Local Community Wealth Benefits

- Commit to hiring, contracting, and supporting women and the black and brown population around Franklin Park
- Comply and attempt to exceed BPDA's Diversity, Equity, and Inclusion in Development Policy
- Contract using the "Massport Procurement Model" inclusionary standards, striving for a 50% MBE/WBE and local businesses threshold
- Marquee Professional Stadium for BPS
- Create a community-oriented, accessible fan experience
- Dedicated neighborhood fan section for community members
- Community Amplification Program to spotlight and amplify the community's people, work, and small businesses
- Boston Unity Annual Fund
- Implement a "Game Day Giving" program highlighting one impact partner per game (40+ organizations a season)
- Concession strategy focused on local food relationships
 - sourcing ingredients from local purveyors and featuring local food concepts.

Workforce Development and Training

- Create 500+ jobs during renovation and construction, and 300+ new permanent jobs
- Preference given to local contractors, vendors, and employees
- Marketing support and subsidized advertising for minority businesses
- Cross-promotional opportunities for local businesses and collaborations with local artists and designers
- Internship programs
- Fund scholarships earmarked for local youth
- World class female athletes as role models in the Franklin Park neighborhood

DIVERSITY AND INCLUSION GOAL:

Achieve 50% Inclusion of Women and Minority-Owned Businesses.

CONCEPT

- Develop a process and network to identify, attract, contract with, and support WMBE & local companies needed for the development and operation at White Stadium for the NWSL team.

PROCESS

1. Needs Assessment
 - Identify the contracting needs through the 3 phases (Design, Development, and Operations) of the project.
 - Assess all open opportunities to fill as many with qualified WMBEs and local businesses.

BUSP - White Stadium
Design Team MBE/WBE Participation Analysis
2023.11.09

Stantec

Discipline	Consultant Firm	M/WBE		Local	Estimated % of Total Design Fee
Building					
Design Architect	Stantec	No		Yes	14%
Architect of Record and Stadium Design Consultant	Moody Nolan	Yes	MBE	Yes	32%
Interior Design	Stantec	No		Yes	8%
Sustainable Design	Stantec	No		Yes	1%
Landscape Architect	Stantec	No		Yes	5%
Permitting	VHB	No		Yes	2%
Code Consultant	Beverley Johnson, Bevco Assoc.	YES	WBE	Yes	1%
	Jennifer Sappochetti, MWBE	Yes	WBE	Yes	1%
Civil	VHB	No		Yes	3%
Structural	Lim	Yes	MBE	Yes	6%
	Odeh (canopy only)	No		Yes	2%
MP/FP	VAV	Yes	MBE	Yes	3%
Electrical	OWL	Yes	WBE	Yes	2%
Energy	ENVI Energy	Yes	WBE	Yes	1%
Geotech	Haley & Aldrich	No		Yes	1%
Specifications	Kalin	No		Yes	1%
Lighting	HLB	Yes	WBE	Yes	4%
IT/AV	Anthony James Partners	No		No	4%
Elevator	VDA	No		Yes	1%
Envelope Consultant	RDH	No		Yes	1%
Acoustics	Acentec	No		Yes	1%
Traffic Engineer	HSH	No		Yes	
Environmental/Hazmat	Axiom	No		Yes	1%
Hardware	(tbd)			(tbd)	1%
Solar Design	Solar Design Associates	No		Yes	2%
Signage	(tbd)			(tbd)	
Cost Estimator	Dharam Consulting	Yes	MBE	No	2%

Estimated Total MBE/WBE Participation: 52%

50% MWBE DESIGN & CONSULTANT TEAM



TAMARA ROY, PRINCIPAL, STANTEC
DESIGN ARCHITECT



MOODY NOLAN, STADIUM ARCHITECT OF RECORD



JENNIFER SAPOCHETTI, JWS, CODE



CARRIE HAWLEY, HLB LIGHTING



LIM ASSOC. STRUCTURAL

DIVERSITY AND INCLUSION GOAL:

Achieve 50% Inclusion of Women and Minority-Owned Businesses

PROCESS

2. Sourcing and Recruitment

- Will endeavor to partner with local business organizations for hiring and contracting. (BECMA, Amplify LatinX, Boston Main Streets, and others)
- Hold local job fairs and contractor hiring events to attract and partner with residents and businesses from the community.
- Develop and implement an online resource listing all open contracts and job descriptions through all project phases, with a portal to bid/apply.



DIVERSITY AND INCLUSION GOAL:

Achieve 50% Inclusion of Women and Minority-Owned Businesses



PROCESS

3. Selection and Interview Process

- Establish diverse interview panels with the goal of prioritizing qualified WMBEs and local business owners first.
- Create a structured interview process and questions focusing on skills and qualifications, ensuring the right fit for all roles.
- Define key performance indicators (KPIs) to measure progress towards diversity and inclusion goals.



DIVERSITY AND INCLUSION GOAL:

Achieve 50% Inclusion of Women and Minority-Owned Businesses

PROCESS

4. Reporting and Transparency

- Publish regular reports on progress towards diversity and inclusion goals.
- Communicate progress, achievements, and misses to all stakeholders via the project webpage.
- Engage stakeholders and employees via webpage and in-person meetings for input and feedback to continuously refine DEI process and strategy.



DIVERSITY AND INCLUSION GOAL:

Achieve 50% Inclusion of Women and Minority-Owned Businesses



PROCESS

5. Support and Training

- Establish mentorship and leadership development programs focused on client relations, business management, and reporting actions.
- Provide marketing expertise and subsidy to local & WMBE partners to develop sound plans and content to be deployed within the stadium.
- Create an Advisory Council to ensure best practices, leverage industry trends and drive accountability.



COMMUNITY BENEFITS

Sports brings communities together. A renovated West Grandstand and the Grove offer benefits to BPS, Boston youth, Local Businesses and the Community.

New Pathways for BPS

- Internship program focused on exposing students to careers in;
 - Sports medicine
 - Broadcasting
 - Communication
 - Marketing
 - Community Relations
 - Facilities
 - MGMT/Maintenance
 - Event MGMT
 - Hospitality
 - Leadership development
- Mentorship program offering one-on-one support for student development.
- Annual Soccer Academy Scholarships
- Coaching Youth on Potential Professional and Collegiate Pathways

Enhanced Community Spaces

- New event spaces available for the community
- New programming possibilities

Promoting the Neighborhood on Game Day & Beyond

- Subsidized marketing and advertising for MBE/WBE
- Sponsor connections for new neighborhood programming and business ideas
- Game Day spotlights for 40+ businesses and organizations
- Increased public safety with new lighting and security

NEW VISION FOR WHITE STADIUM: BPS TO PLAY IN A PROFESSIONAL-GRADE SOCCER STADIUM



Boston Public Schools And Community Use

- Better access to restrooms, water fountains, and accessible accommodations.
- A well-lit, better-maintained running track and sports field.
- More comfortable seating.
- A new scoreboard

The Grove, a gathering space behind the scoreboard, could be used for ancillary events that support Boston Public Schools programs, such as team fundraisers, camps, fairs, or other uses in support of BPS.

Boston Unity Use

For approximately 20 days between March and November, primarily on weekends, retractable and mobile seating will be used to transform the running track loop into additional seating areas. The Grove will take on a festival atmosphere with tents, food and beverage, hangout and play zones.

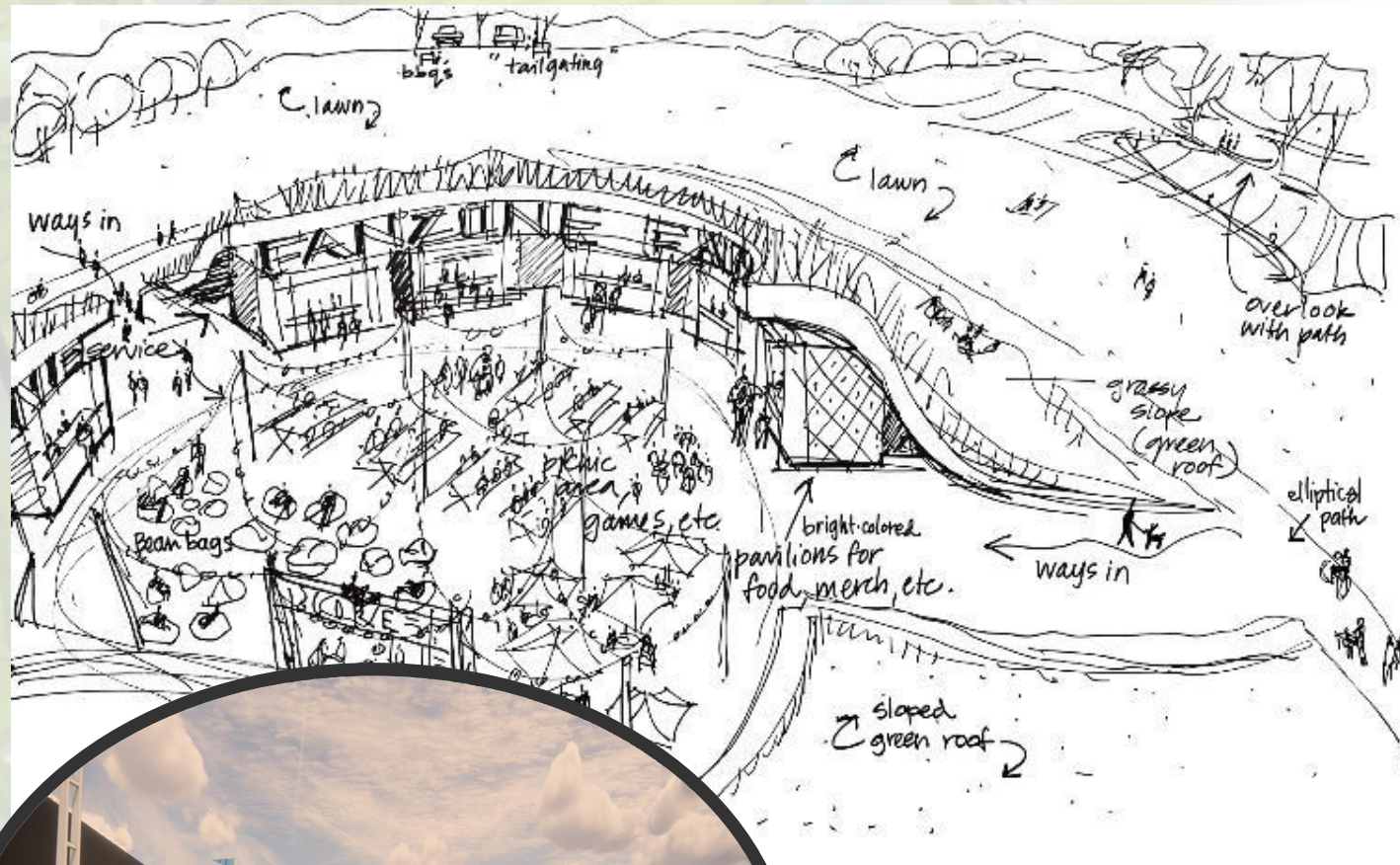
- A variety of concessions will be available within the stadium grounds.
- Shuttles from various MBTA stations nearby and remote parking lots will drop off and pick up near the stadium entrance.
- Temporary banners and fan paraphernalia will be strung between the light poles at north end zones.

THE GROVE

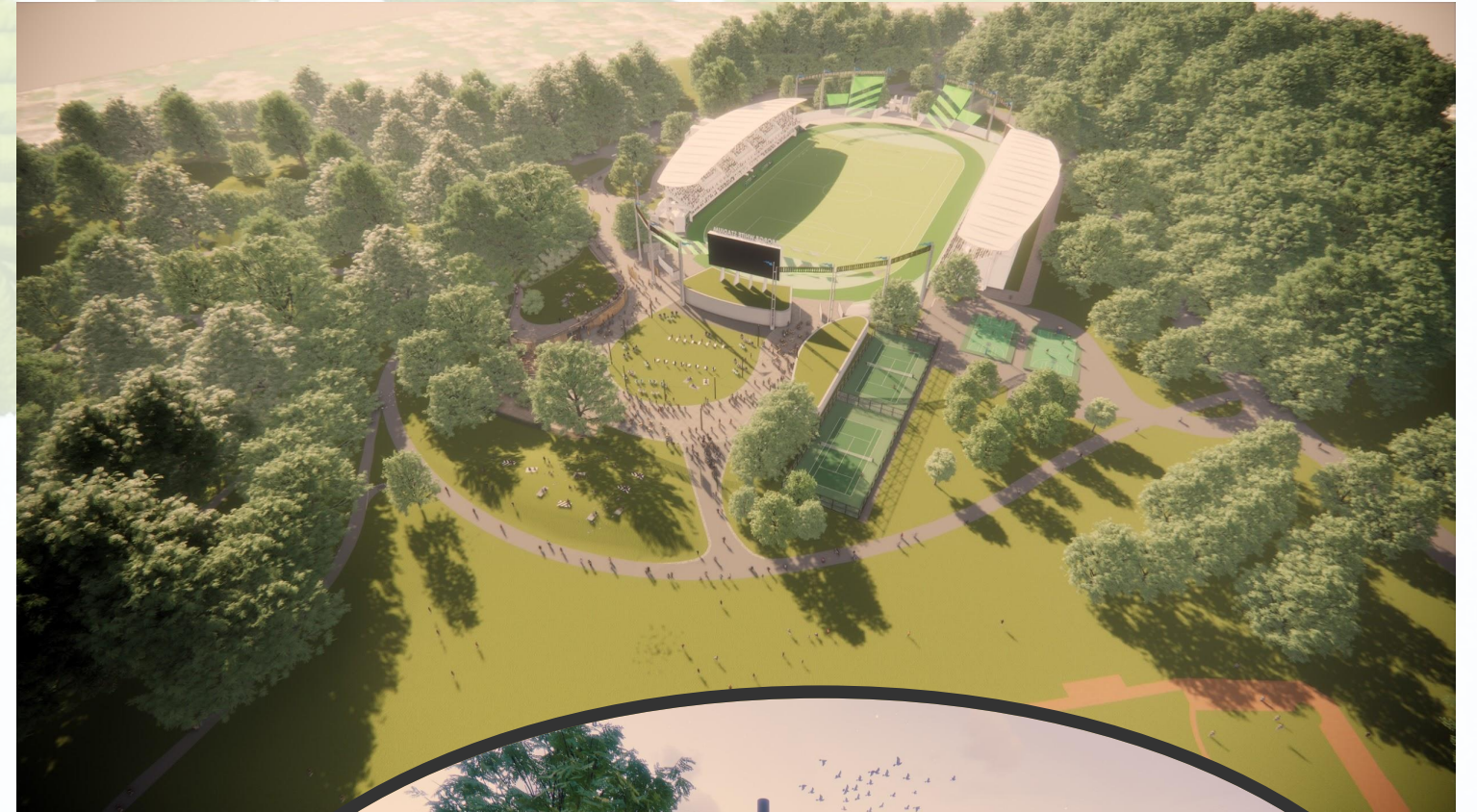
A PUBLIC BENEFIT

The Grove

The 62,500 square-foot lease area to the south of the stadium is envisioned as a programmable complement to the stadium itself. It provides a location for fan events before, during, and after games, as well as a possible site for many community events and activities, including an open-air restaurant, movie nights, ice skating, and Friday night jazz performances as examples.



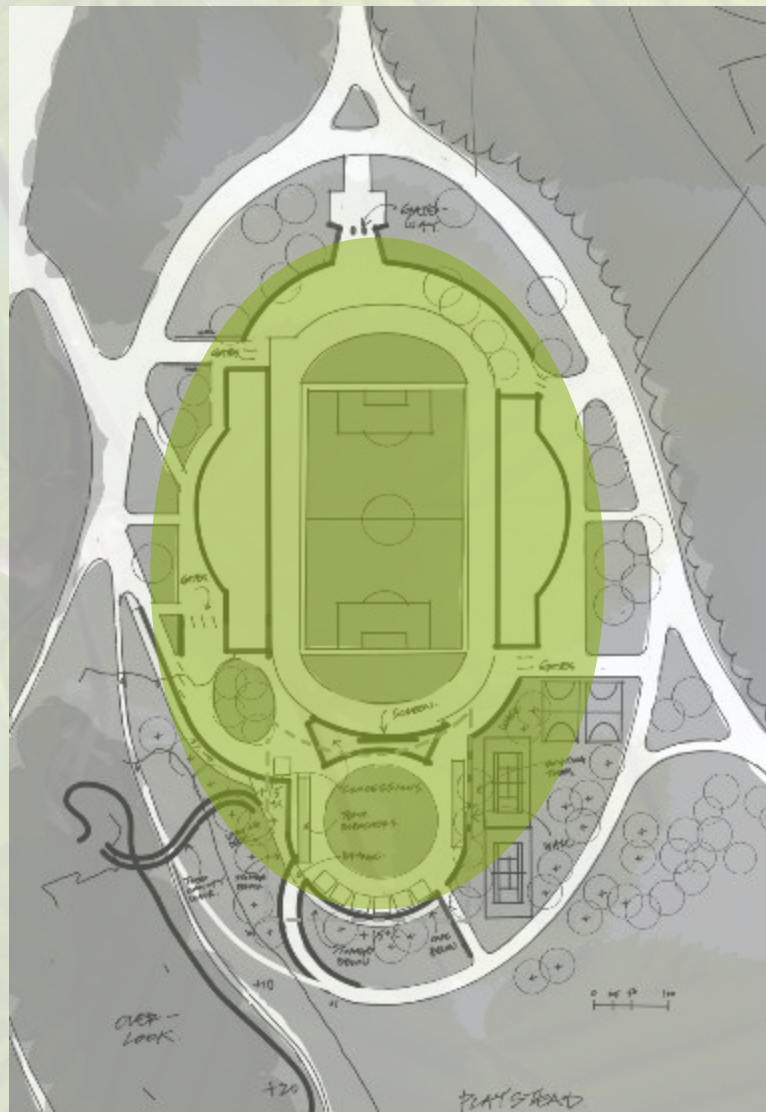
The goal of the Grove is to create a gathering place that is flexible enough to be reconfigured in any number of ways based on the activities desired. Boston Public Schools could use this space for fundraisers, summer camps, and many other programs.



PUBLIC USE CELEBRATION EVENTS

Cultural & Music Festivals, Food Festivals,
Weddings & Ceremonies, etc.

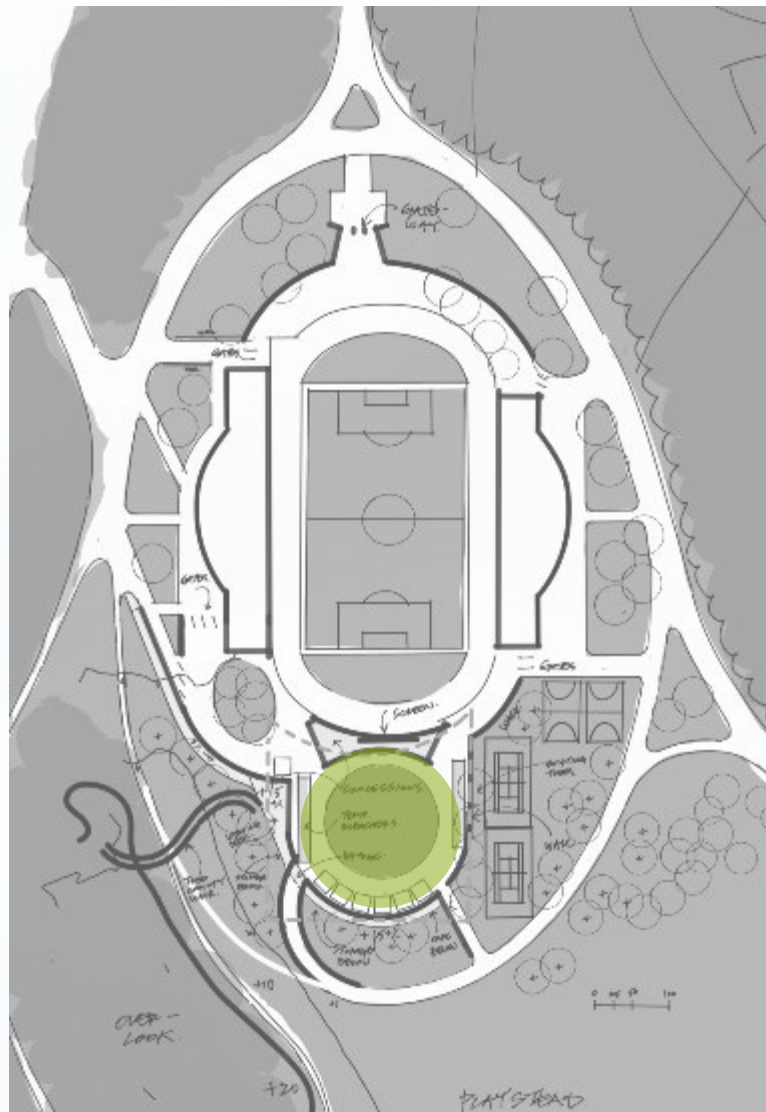
SPRING, SUMMER, FALL



RECREATIONAL EVENTS

Movie Nights, Seasonal Activities, Wine & Beer
Garden, etc.

YEAR ROUND



Boston Unity Annual Community Fund

Boston Unity Annual Community Fund

- A \$500k annual fund to be distributed to organizations and initiatives
- Dedicated to four pillars:
 - *Investments in Franklin Park and the Franklin Park Action Plan*
 - *Youth Sports and Development*
 - *Health and Wellness of Black and Brown Communities*
 - *Local Business Development*

There will be an Advisory Committee, including neighborhood representatives from Franklin Park neighborhoods to make recommendations to support organizations and initiatives.





Submitted By

**Boston Unity Soccer
Partners LLC**

Prepared By

Able  **Stantec**
company

With

  
HOWARD STEIN HUDSON

Next Steps

- Visit **boston.gov/white-stadium**
- Send questions to **whitestadium@boston.gov**