

# Welcome!

The meeting will start soon.

**To start, use the chat feature to tell us your name and how you heard about this workshop.**

The screenshot shows a Zoom meeting interface. On the left, a presentation slide with a green background displays the text: "Improvements to Town Field", "Virtual Public Meeting 2", and "12 December, 2023". A small video thumbnail of a person is visible in the top right corner of the slide area. On the right, a chat window is open, titled "Chat", with the instruction "Add comments and your answers to our questions here!". Below the instruction are three input fields, each preceded by a person icon. At the bottom of the chat window, it says "We're recording!". At the bottom of the Zoom interface, a toolbar contains icons for "Audio Settings", "Chat" (circled in yellow), "Raise Hand", "Q&A", and "Leave".

# Improvements to Town Field

Virtual Public Meeting 2  
12 December, 2023

## Chat

Add comments and your answers to our questions here!

Three input fields for chat messages, each preceded by a person icon.

**We're recording!**

Audio Settings ^

Chat

Raise Hand

Q&A

Leave

# Improvements to Town Field

Fields Corner, Dorchester  
Boston Parks and Recreation

**Virtual Public Meeting 2**  
12 December, 2023



City of Boston  
*Parks and Recreation*

Agency  
Landscape + Planning

# MEETING RECORDING

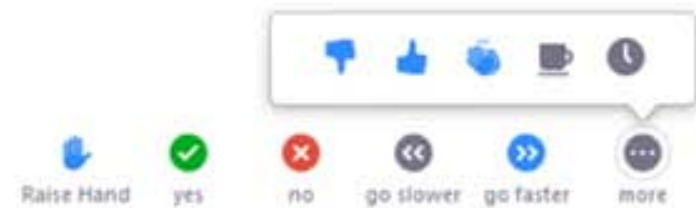
**This meeting is being  
recorded!**

- The Boston Parks and Recreation Department will be recording the meeting and posting to our project webpage for those who are unable to attend the Zoom meeting live.
- It is possible that participants may also be recording the meeting with their phones cameras or other devices. If you do not wish to be recorded during this meeting, please keep your microphone muted and camera off.
- Please share with your neighbors and friends, **[boston.gov/town-field](https://boston.gov/town-field)**

# ZOOM TIPS

## During the presentation:

  **Via web:**  
Turn video on/off



To use these non-verbal options click on participants (bottom of screen); these options will pop up in side bar

## During the Q&A:



### Joining via phone?

Use \*9 to raise hand to ask for audio / video permission to ask questions or provide comments



### Via web:

Chat to ask questions / comments or provide responses to poll questions



Raise hand to ask for audio / video permission to ask questions or provide comments

# TONIGHT'S **AGENDA**

## Project Overview (5 mins)

Introductions + Team

Project Schedule + Process

## Project Guiding Principles + Alternatives (35 mins)

What We've Heard

Project Guiding Principles

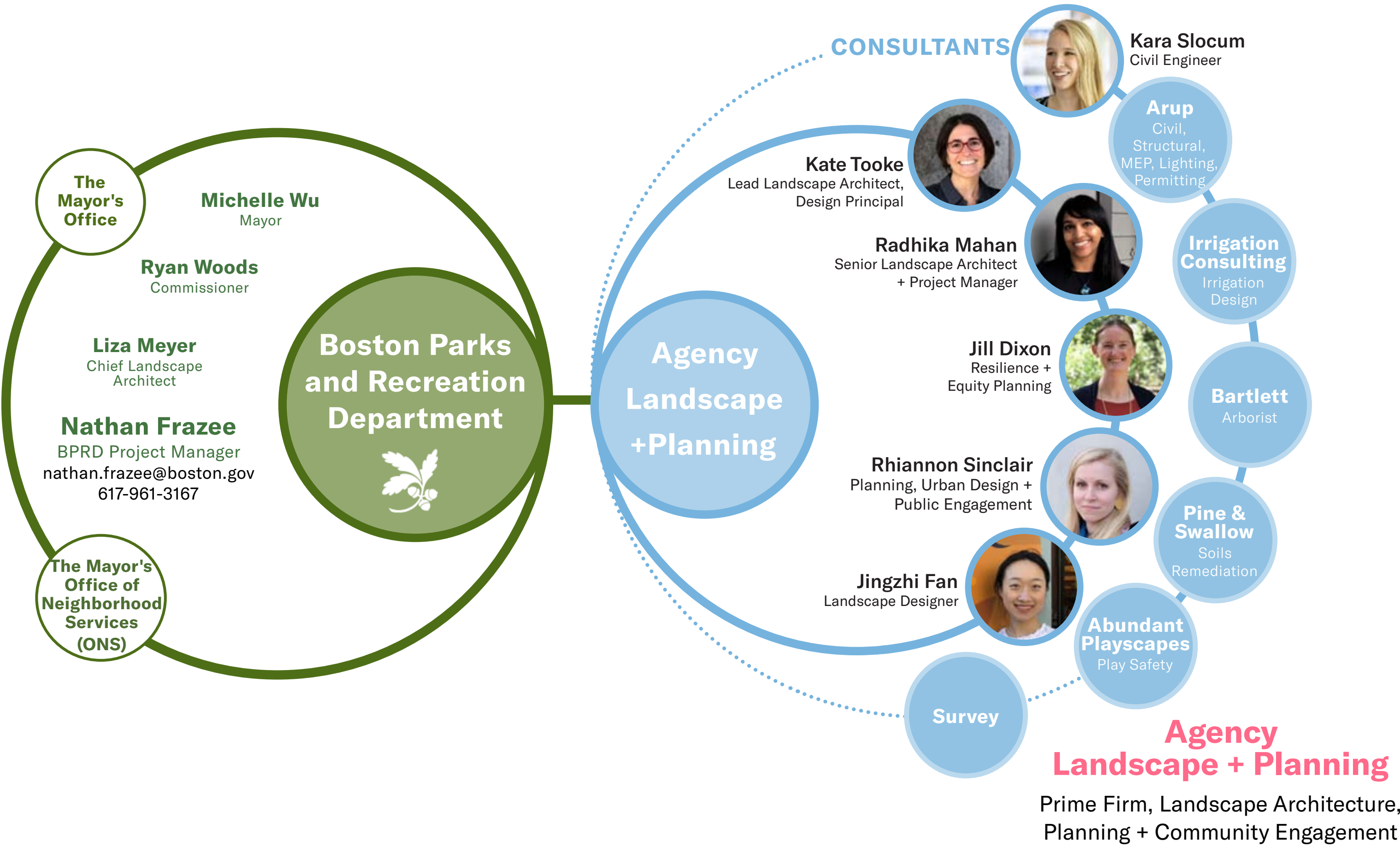
Conceptual Alternatives + Feedback

## Discussion (50 mins)

An aerial photograph of a university campus, overlaid with a semi-transparent green filter. The image shows a dense cluster of buildings, including several large, multi-story structures. In the center, there is a prominent baseball field with a diamond and bases visible. To the left of the baseball field, there are several basketball courts. The campus is surrounded by trees and greenery. The text "Project Overview" is centered in the lower half of the image in a bold, white, sans-serif font.

# Project Overview

# INTRODUCTIONS + TEAM



**Boston Parks and Recreation Department**

**The Mayor's Office**

**Michelle Wu**  
Mayor

**Ryan Woods**  
Commissioner

**Liza Meyer**  
Chief Landscape Architect

**Nathan Frazee**  
BPRD Project Manager  
nathan.frazee@boston.gov  
617-961-3167

**The Mayor's Office of Neighborhood Services (ONS)**

**Agency Landscape + Planning**

**CONSULTANTS**

**Kate Tooke**  
Lead Landscape Architect,  
Design Principal

**Radhika Mahan**  
Senior Landscape Architect  
+ Project Manager

**Jill Dixon**  
Resilience +  
Equity Planning

**Rhiannon Sinclair**  
Planning, Urban Design +  
Public Engagement

**Jingzhi Fan**  
Landscape Designer

**Kara Slocum**  
Civil Engineer

**Arup**  
Civil,  
Structural,  
MEP, Lighting,  
Permitting

**Irrigation Consulting**  
Irrigation  
Design

**Bartlett**  
Arborist

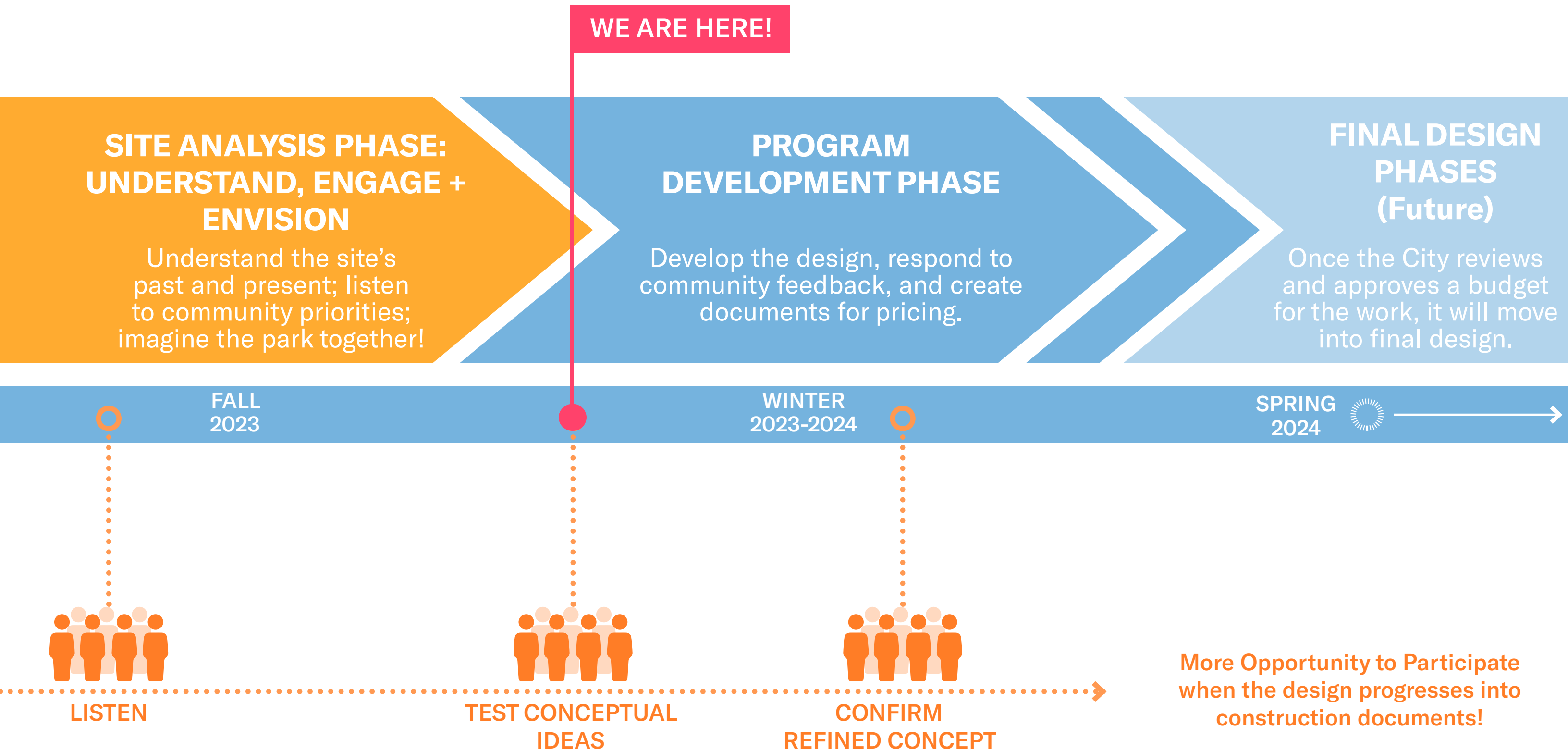
**Pine & Swallow**  
Soils  
Remediation

**Abundant Playscapes**  
Play Safety

**Survey**

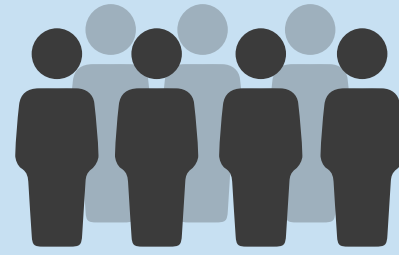
**Agency Landscape + Planning**  
Prime Firm, Landscape Architecture,  
Planning + Community Engagement

# PROJECT SCHEDULE + OVERVIEW





# Community Input



# City of Boston Priorities

- Expanding Walkable Access to Parks
- Addressing Equity
- Climate Resilience
- Health
- Community Building

# Parks & Recreation Goals

- Accessible and Available to All
- Diverse, Balanced, and Efficient Mix of Uses
- Meaningful and Inclusive Community Engagement
- Adaptive and Resilient Landscapes Promote Connections

# Safety & Regulatory Guidelines



INNOVATIVE DESIGN + QUALITY CONSTRUCTION

# Great Boston Parks



# TONIGHT'S **GOALS!**

**The City and the design team are here to listen.**

**We'll share some information, ask a lot of questions, and look forward to your input.**

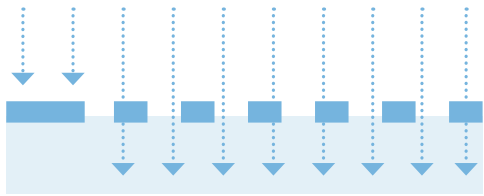
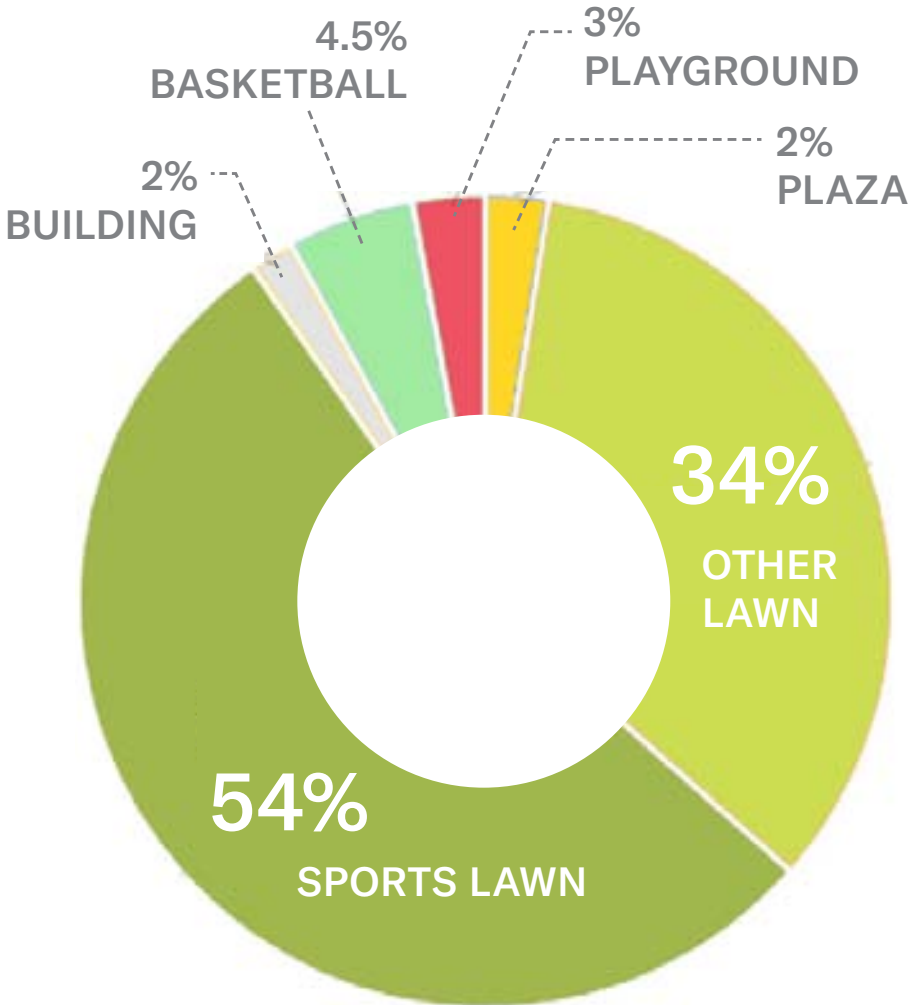
**We hope that you:**

- Learn more about what the community values about Town Field.
- Express your thoughts on what works in each design concept, and what needs improvement.
- Share your excitement about the future of Town Field with others who might want to express their opinions.

An aerial photograph of a university campus, overlaid with a semi-transparent green filter. The image shows a large baseball field in the center, surrounded by several basketball courts and other sports facilities. The campus is densely packed with buildings, trees, and parking lots. The text "Project Guiding Principles" is prominently displayed in the lower-middle section of the image.

# Project Guiding Principles

# TOWN FIELD TODAY - AN ACTIVE AND BELOVED PARK



**82% PERVIOUS**



**16%  
CANOPY  
COVERAGE**

**Thank you to the voices that  
have already introduced us  
to Town Field!**



# WHAT WE'VE HEARD

Entrances to the park need definition

Edge along homes to be considered

Infrastructure concerns: drainage and fencing

Space for community group activities (fitness + games)

Softball field and basketball courts are well used; baseball less so

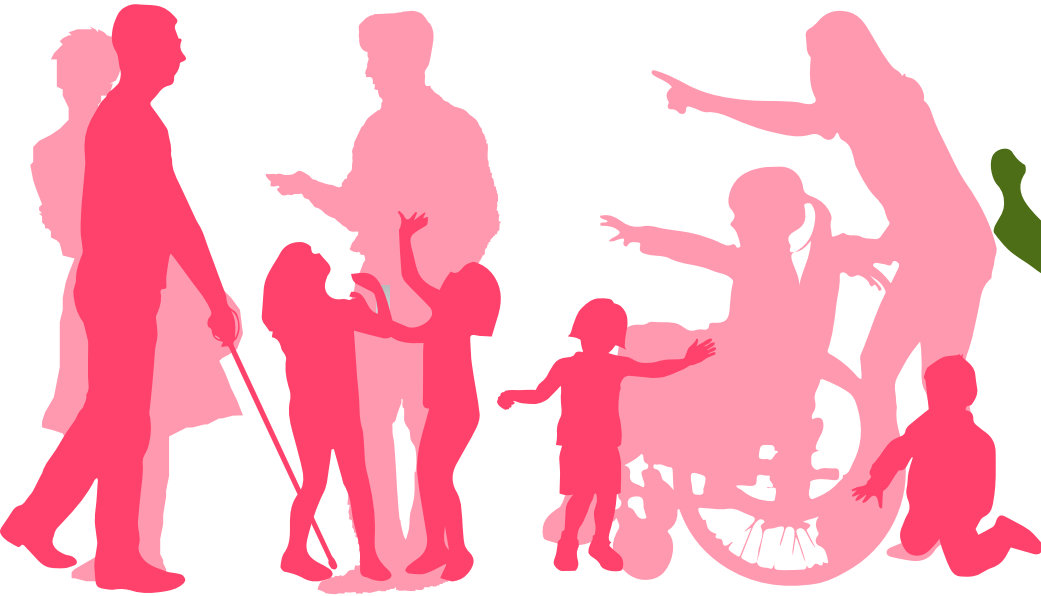
Bleachers are not required, but some seating to watch sports is desirable

Multi-purpose field use is desirable

A small stage as a gathering area

Plan for large events

Community garden needs storage and access to water



**Park Edges, Arrival and Circulation**

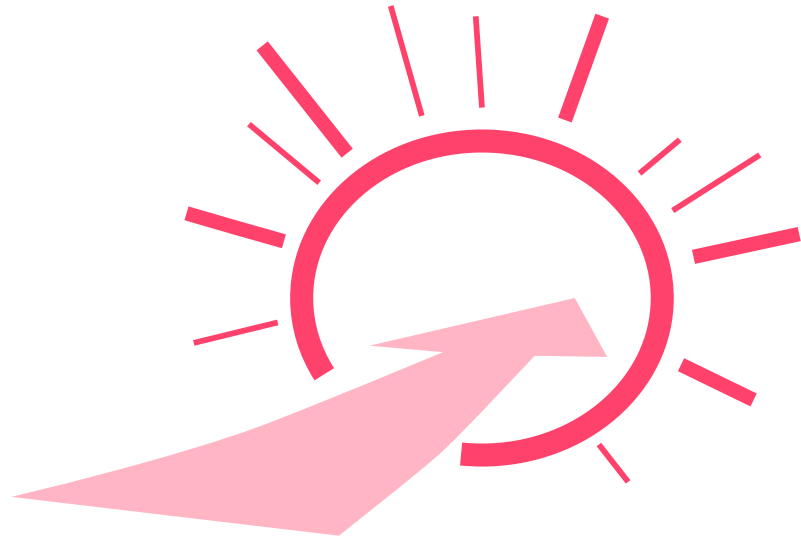


**Playing and Watching Sports**



**Social Activities and Events**

# PROJECT **GUIDING PRINCIPLES**



## **A Welcoming and Connected Park Experience**

Great parks have great edges and entries.

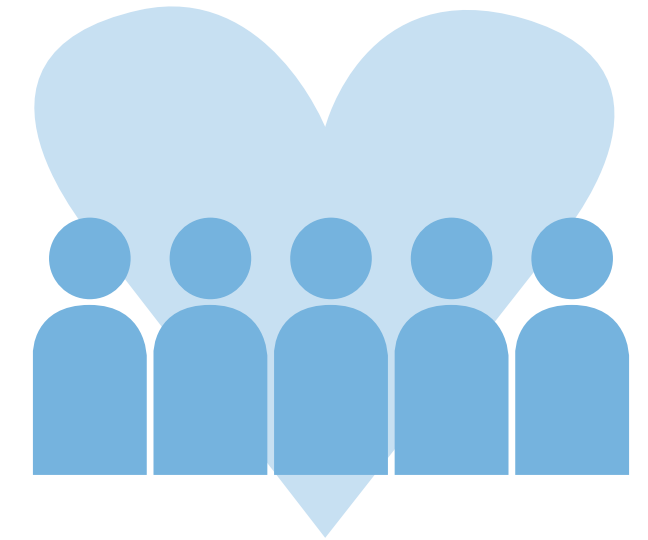
How do we make sure it feels comfortable to arrive at and navigate through Town Field?



## **A Diversity of Active Field Recreation Opportunities**

This is a recreational destination for all of Dorchester.

What sports fields and courts best support the needs of this community?



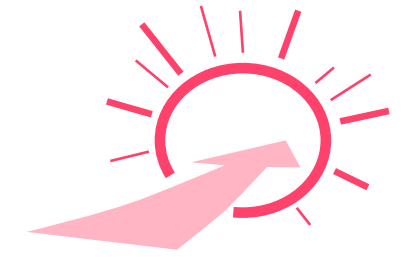
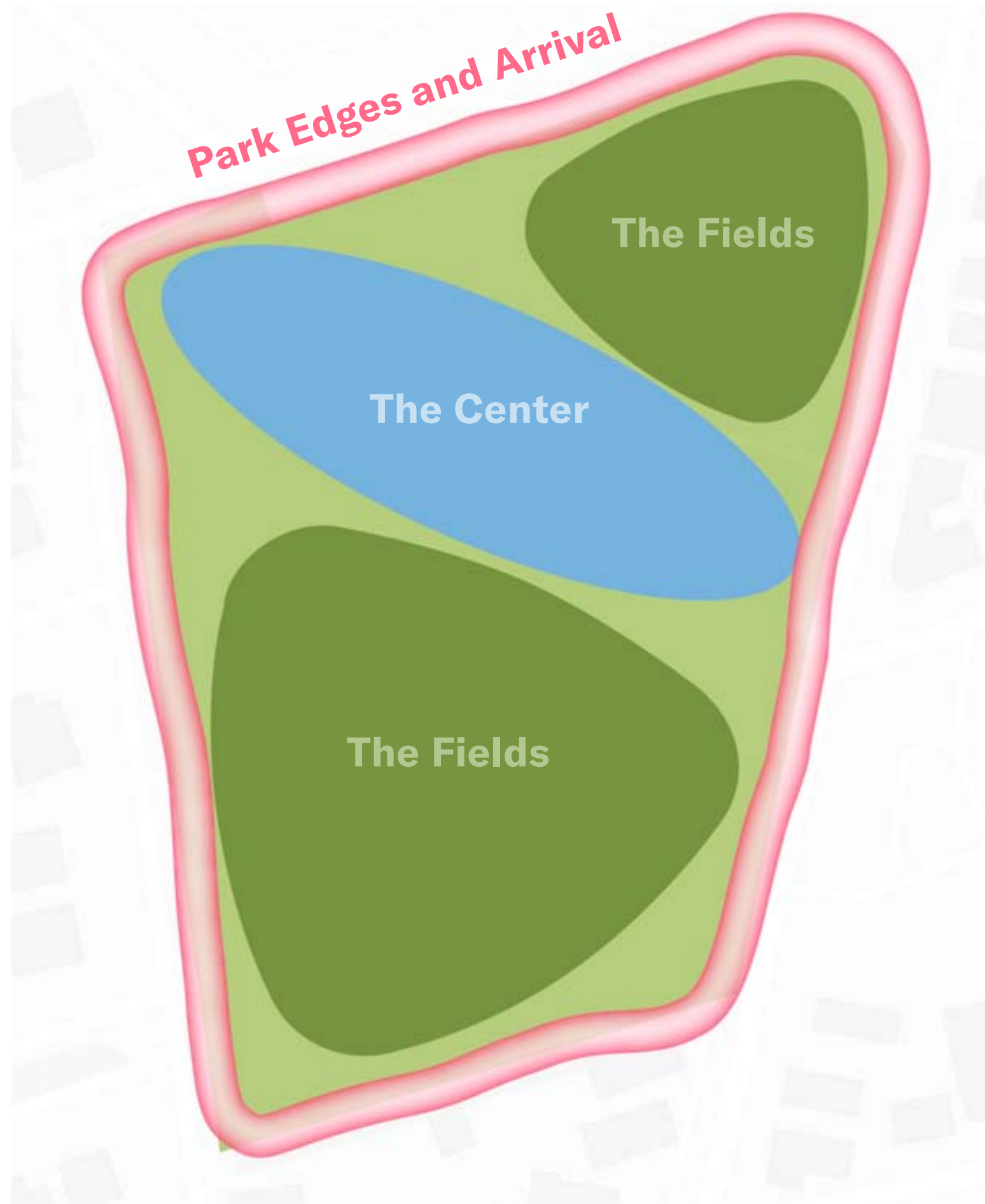
## **The Heart of the Fields Corner Community**

The neighborhood already celebrates, protests and socializes in Town Field.

How can the park better support event and everyday use?

Tonight we'll look at two options for each of three park areas.

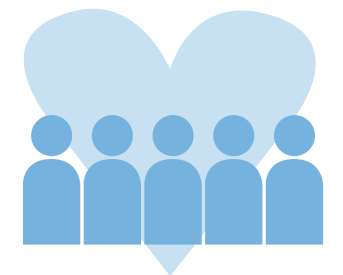
We'll ask you what you prefer and then consider together how the preferred ideas could mix and match!



**A Welcoming  
+ Connected  
Experience**



**A Diversity of  
Active Field  
Recreation  
Opportunities**



**The Heart of the  
Fields Corner  
Community**



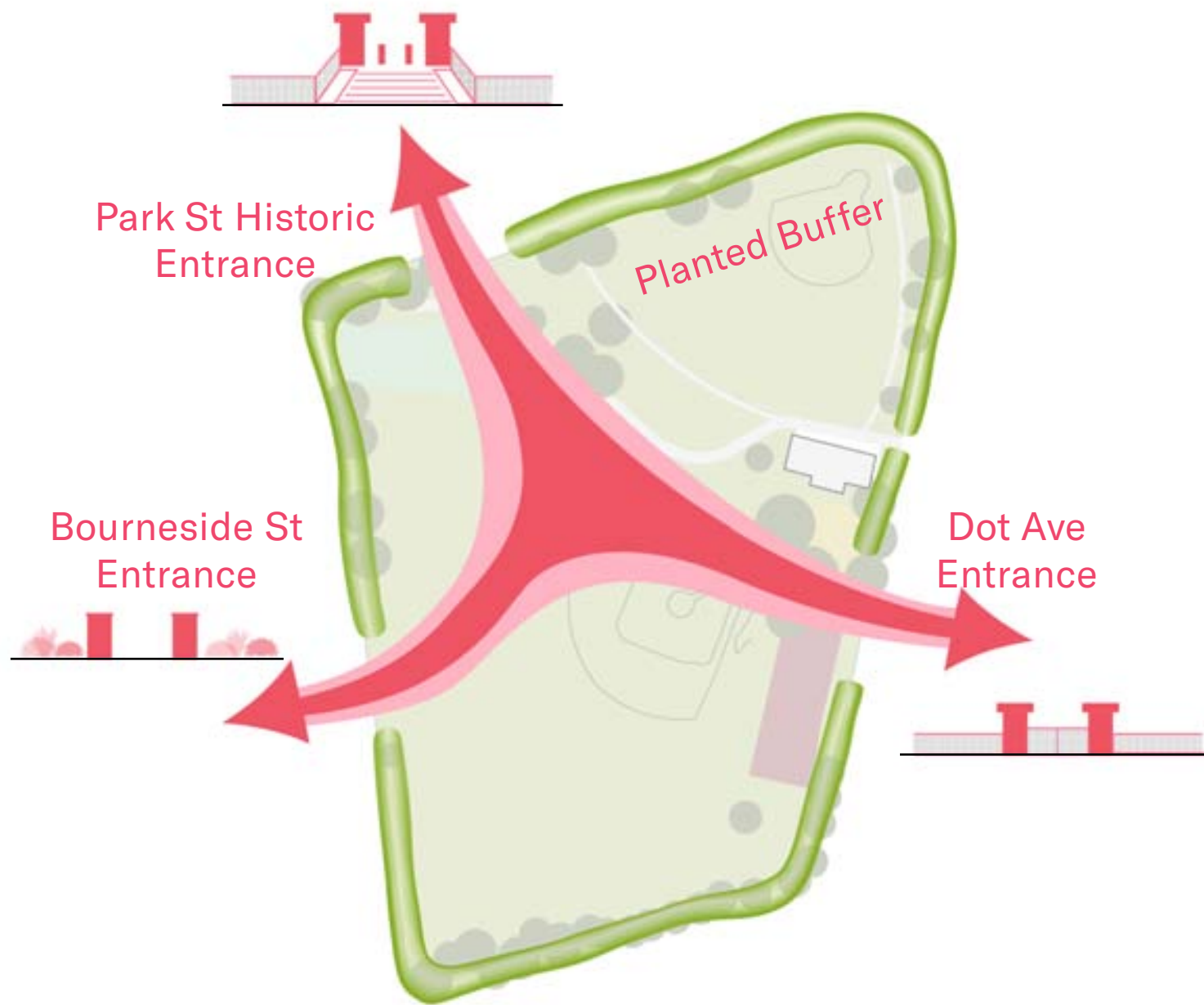
# A Welcoming and Connected Experience

Great parks have great edges and entries. How do we make sure it feels comfortable to arrive at and navigate through Town Field?



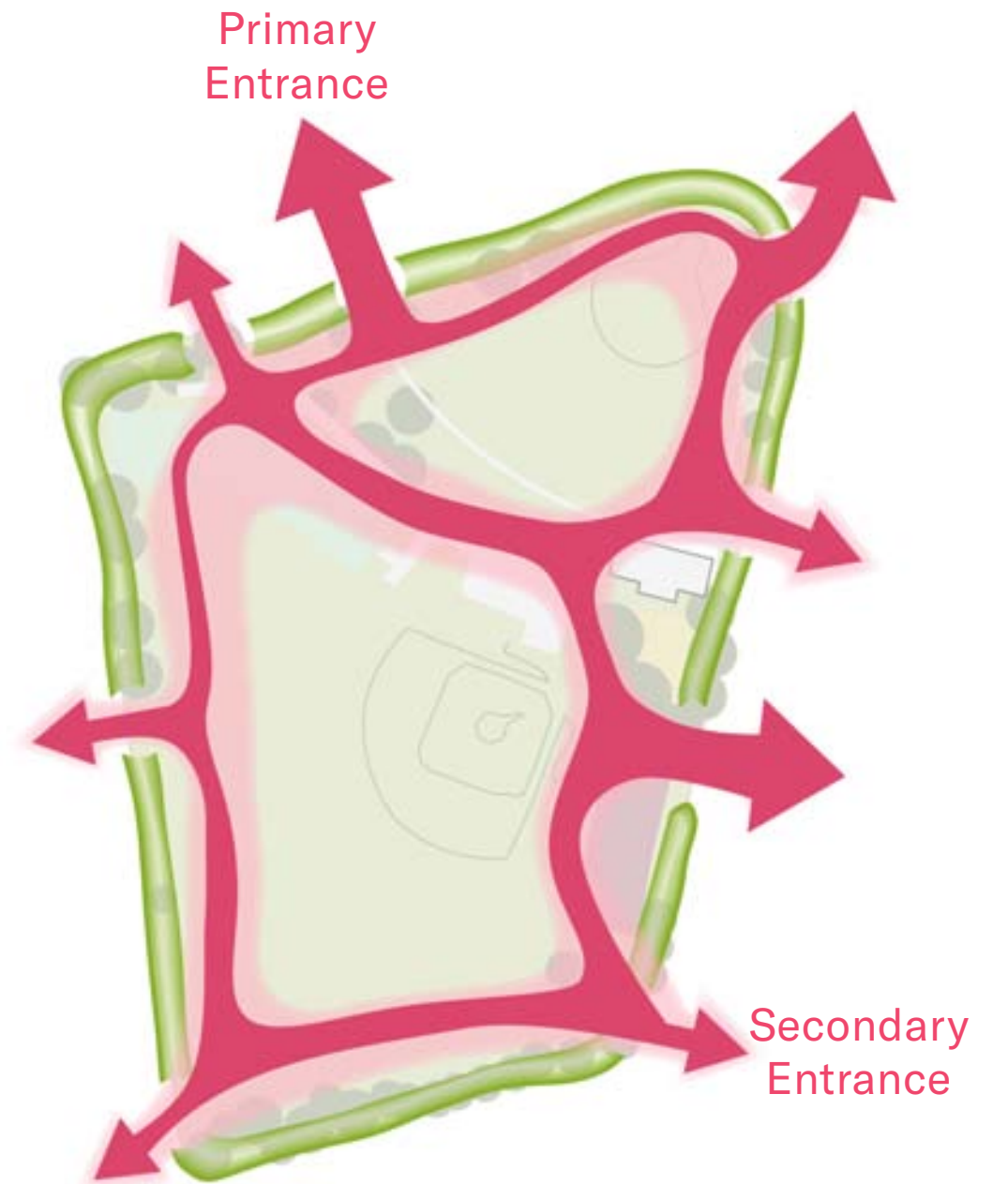
OPTION A:

## Celebrate the Historic Gateways



OPTION B:

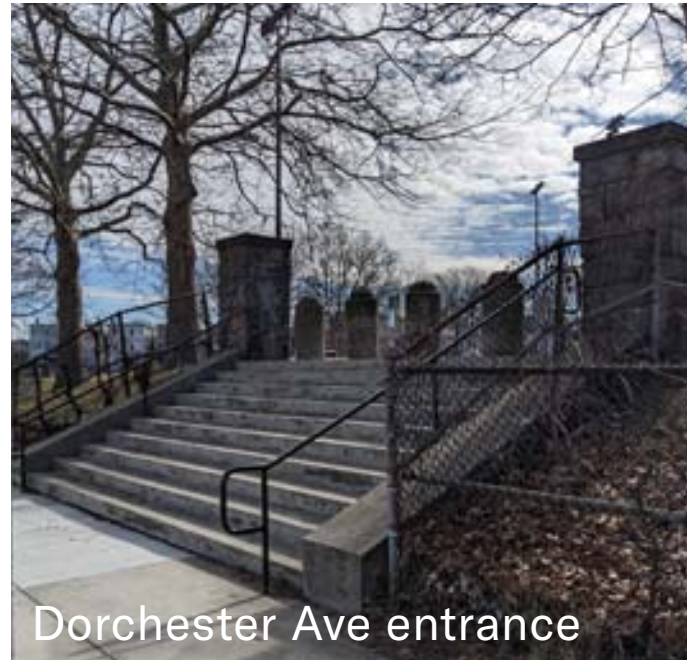
## Increase Entries and Loops



**OPTION A:**  
**Celebrate the Historic Gateways**



Bourneside St entrance



Dorchester Ave entrance



Town Field: Park St entrance

**OPTION B:**  
**Increase Entries and Loops**



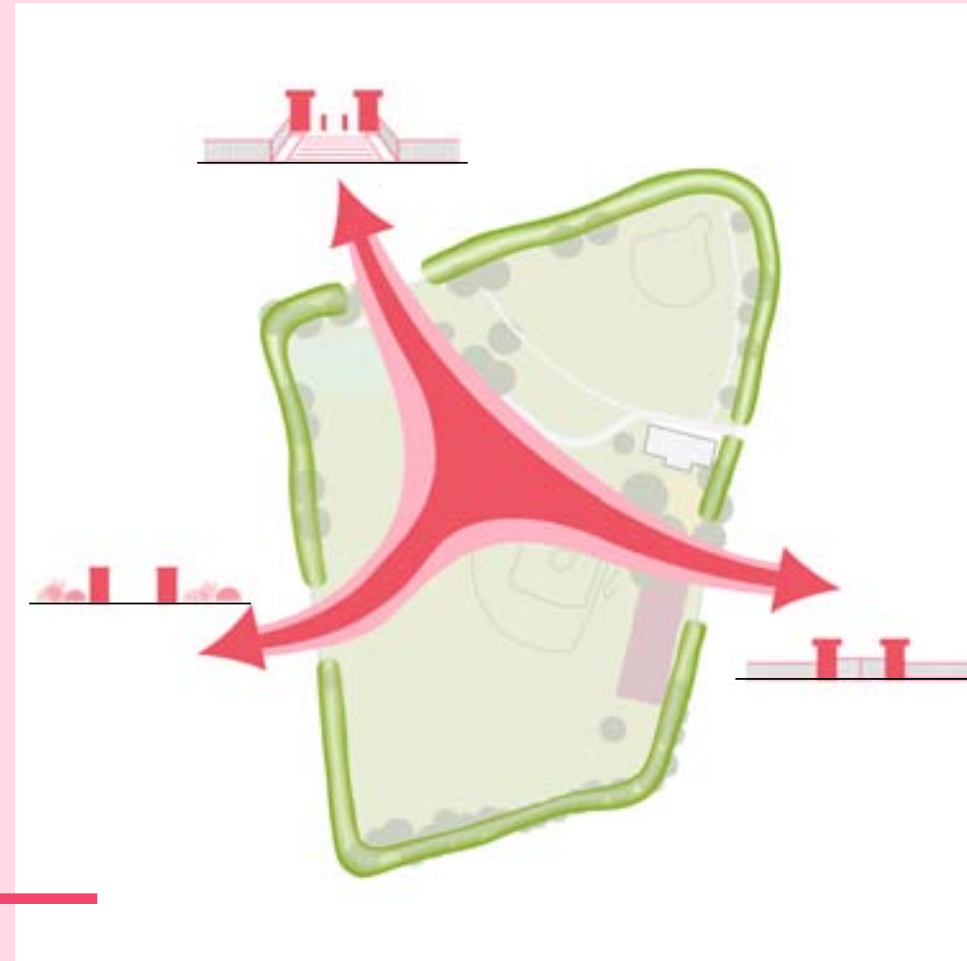
Mary Hannon Park, Roxbury



Garvey Playground, Dorchester

# POLL QUESTION 1

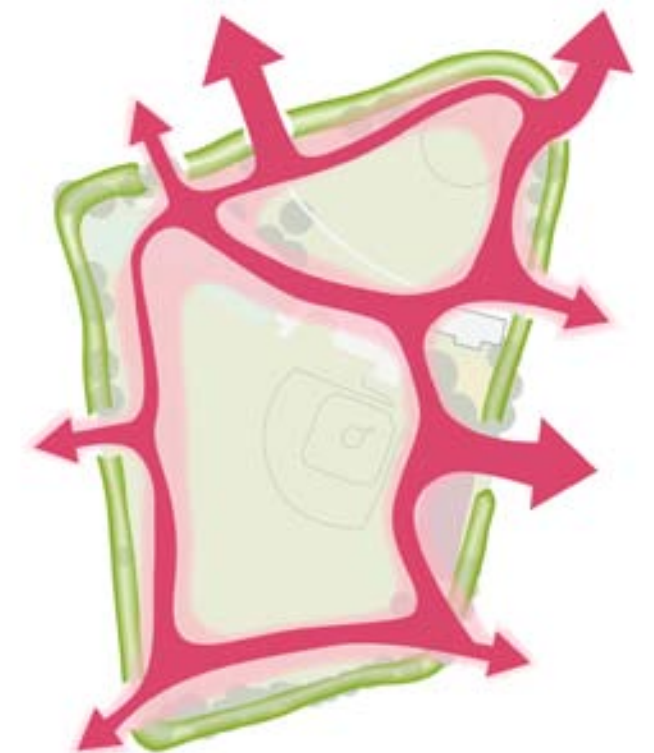
Tell us how you think  
Town Field should  
welcome the community!  
By...



**A. Celebrating the  
Historic Gateways**

**B. Increase entries and  
loops**

**C. Other - tell us in the  
chat!**



# A Diversity of Active Field Recreation Opportunities

This is a recreational destination for all of Dorchester. What sports fields and courts best support the needs of this community?



OPTION A:

## Diversify Baseball Field with Striping



OPTION B:

## Relocate Softball Field and Diversify Northeast Corner



OPTION A:

# Diversify Baseball Field with Striping



McConnell Park, Boston



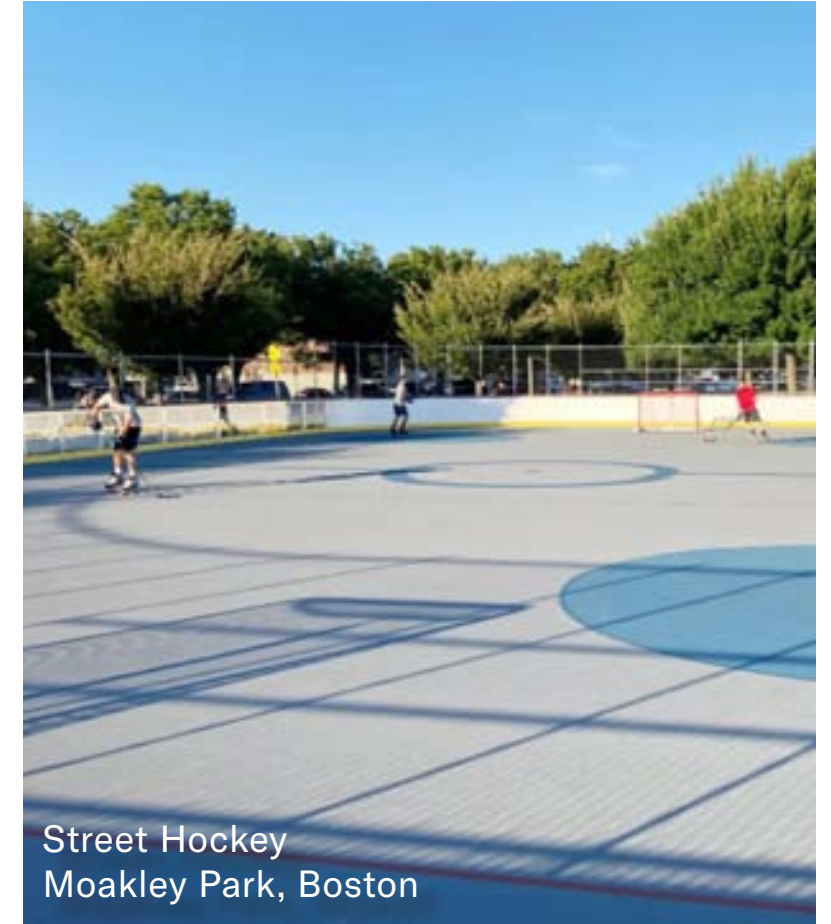
Garvey Playground, Dorchester

OPTION B:

# Relocate Softball Field and Diversify Northeast Corner



Parkour  
Town Field, Belmont



Street Hockey  
Moakley Park, Boston



Skate Park  
Smith Field, Allston

## POLL QUESTION 2

Tell us which active recreation fields and courts best support the needs of this community?

**A. Diversify Baseball Field with Striping**

**B. Relocate Softball, Diversify northern corner**

**C. Other - tell us in the chat!**





# POLL QUESTION 3

Which additional recreational activities most appeal to you?

**A. Pump Track**

**B. Futsal**

**C. Skate Park**

**D. Parkours**

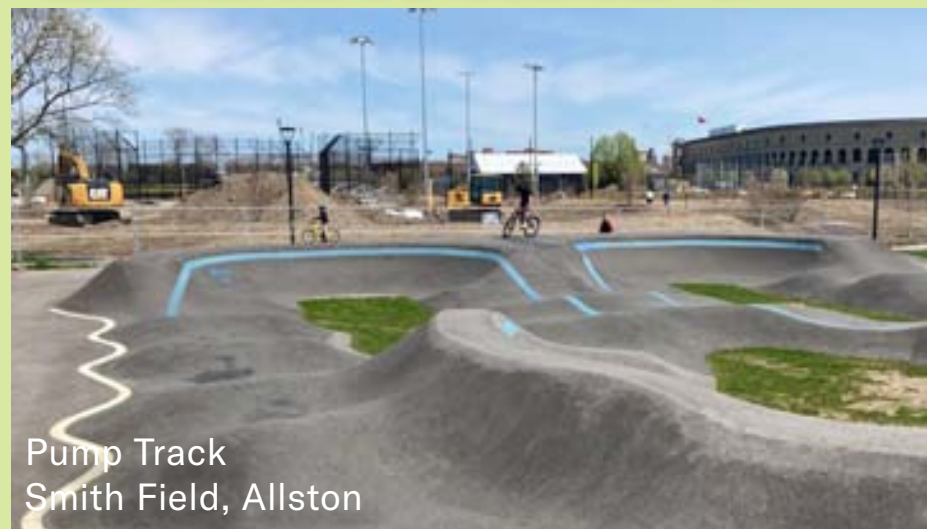
**E. Pickleball**

**F. Street Hockey**

**G. Lawn Games (bocce, cornhole)**

**H. Lawn Tennis**

**I. Other - tell us in the chat!**



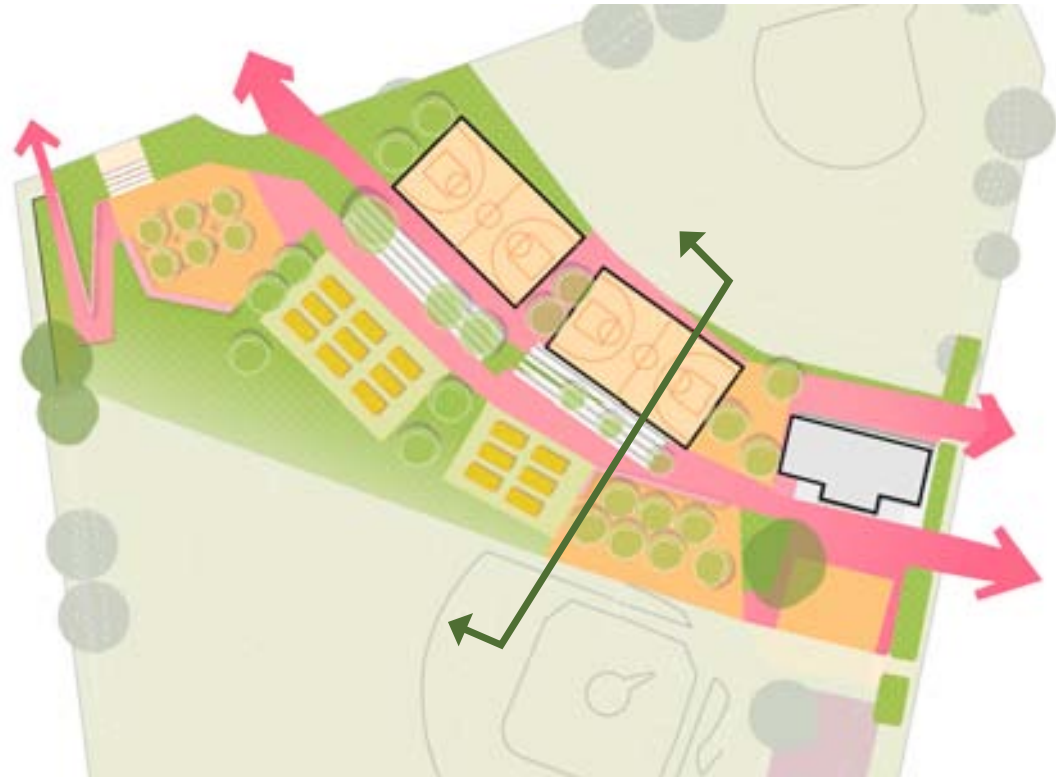
# A Green Heart of the Fields Corner Community

The neighborhood already celebrates, protests and socializes in this space. How can the park better support event and everyday use?



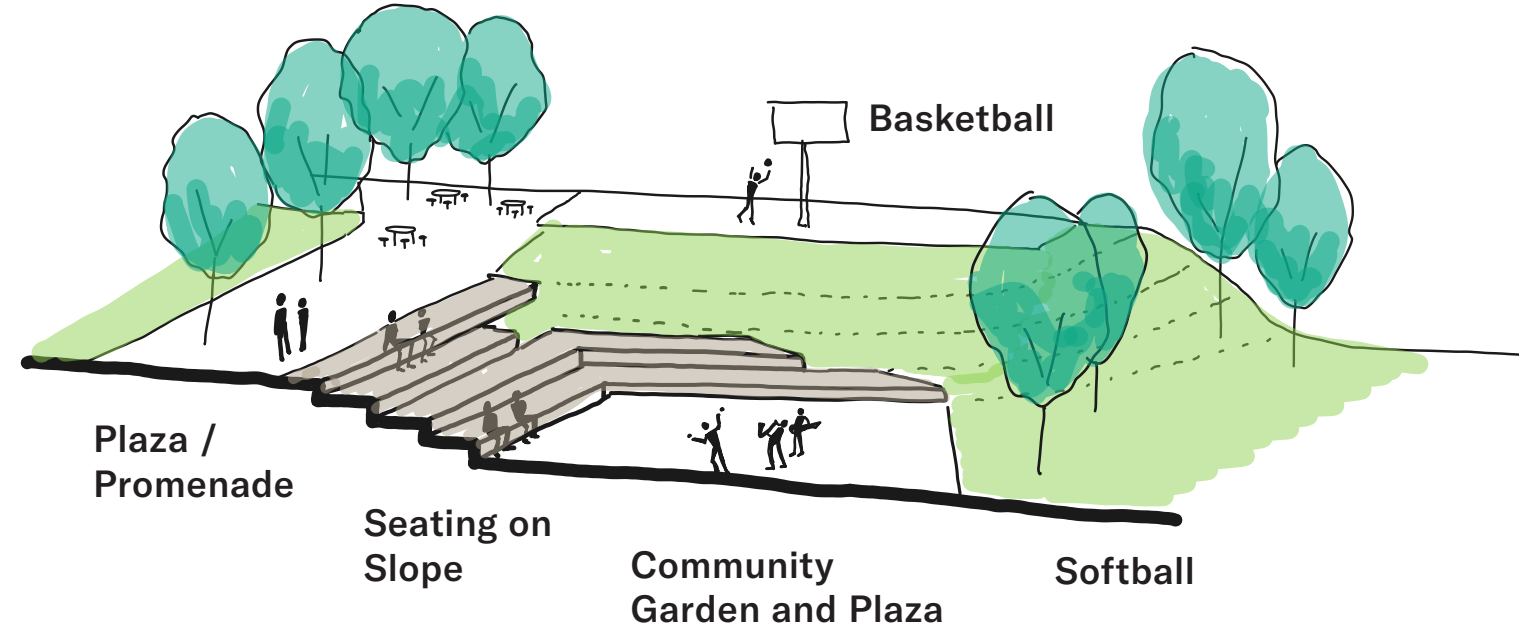
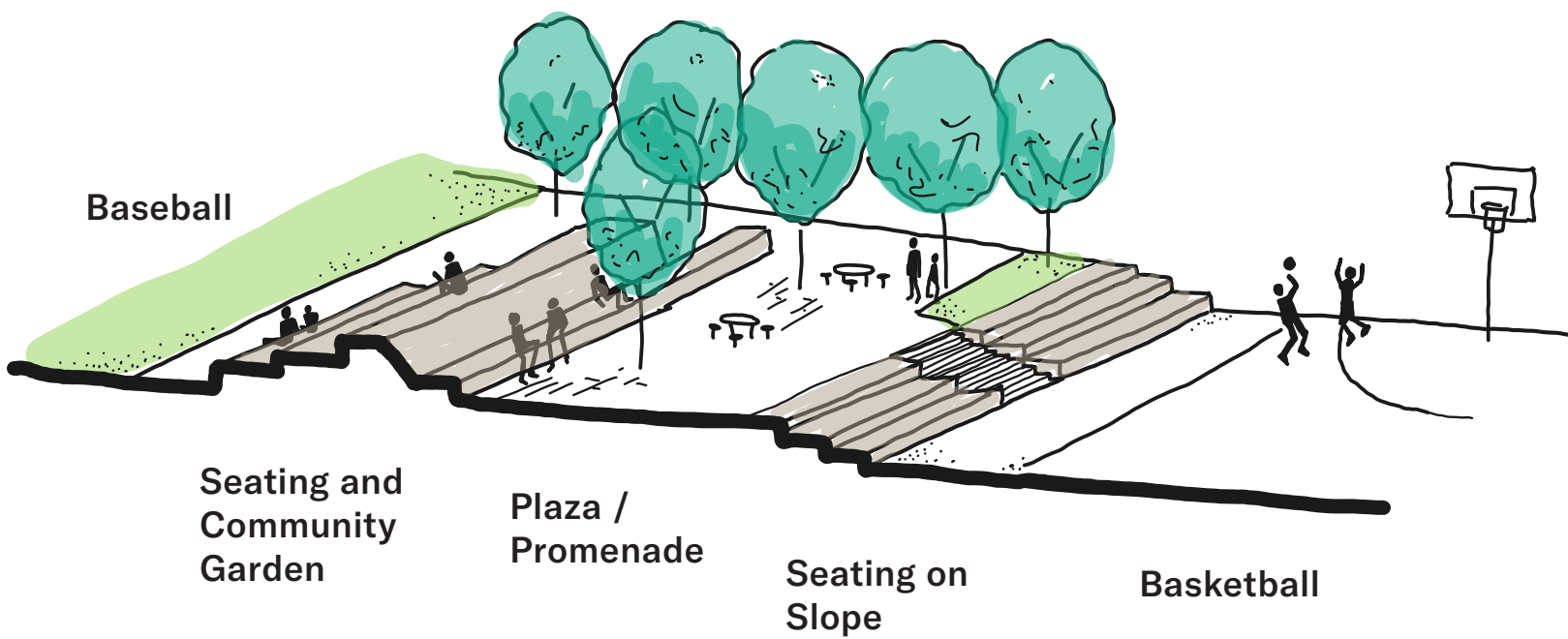
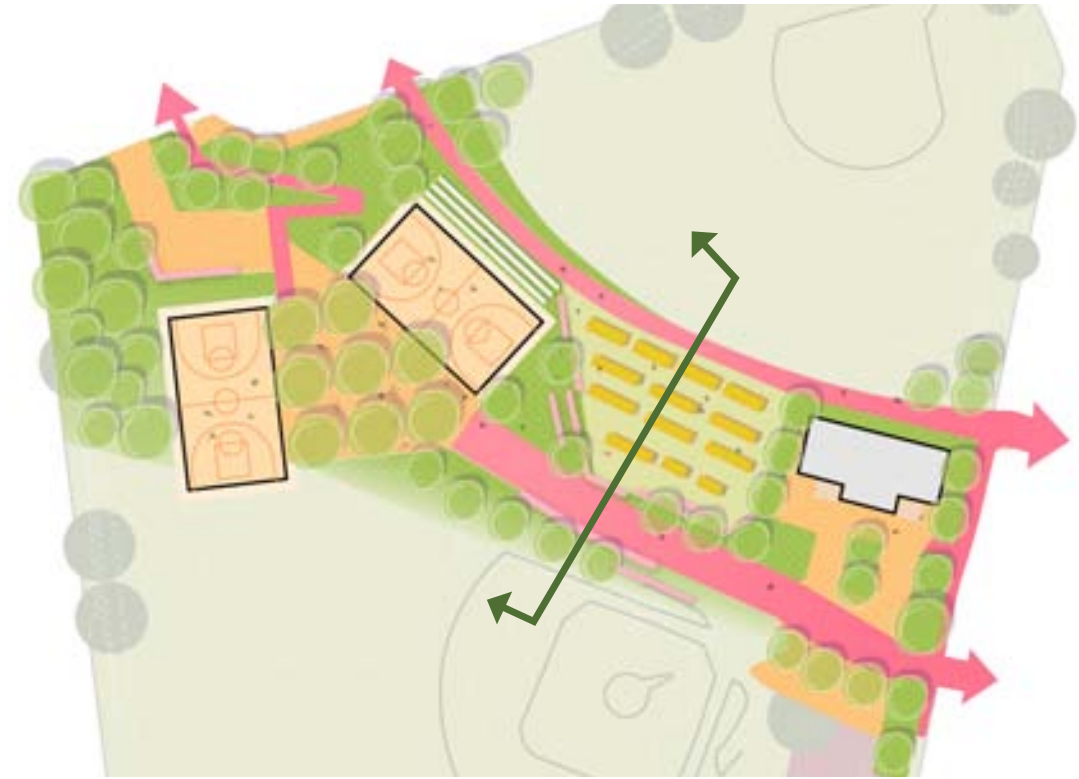
OPTION A:

# Parallel Spines with Hillside Amphitheater Seating



OPTION B:

# Zones of Sports and Community Gathering



OPTION A:  
**Parallel Spines with  
Hillside Amphitheater Seating**



OPTION B:  
**Zones of Sports and  
Community Gathering**



Garvey Playground, Boston



Garvey Playground, Dorchester

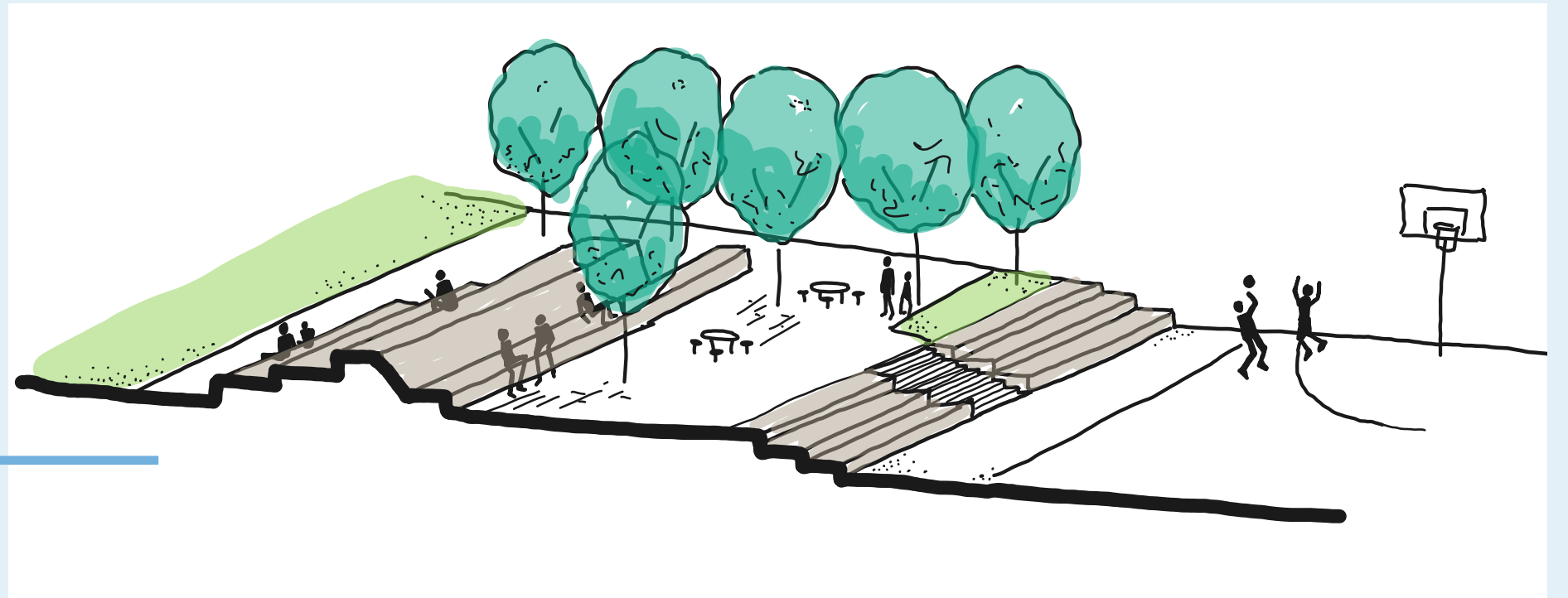


Langone & Puopolo Park, Boston

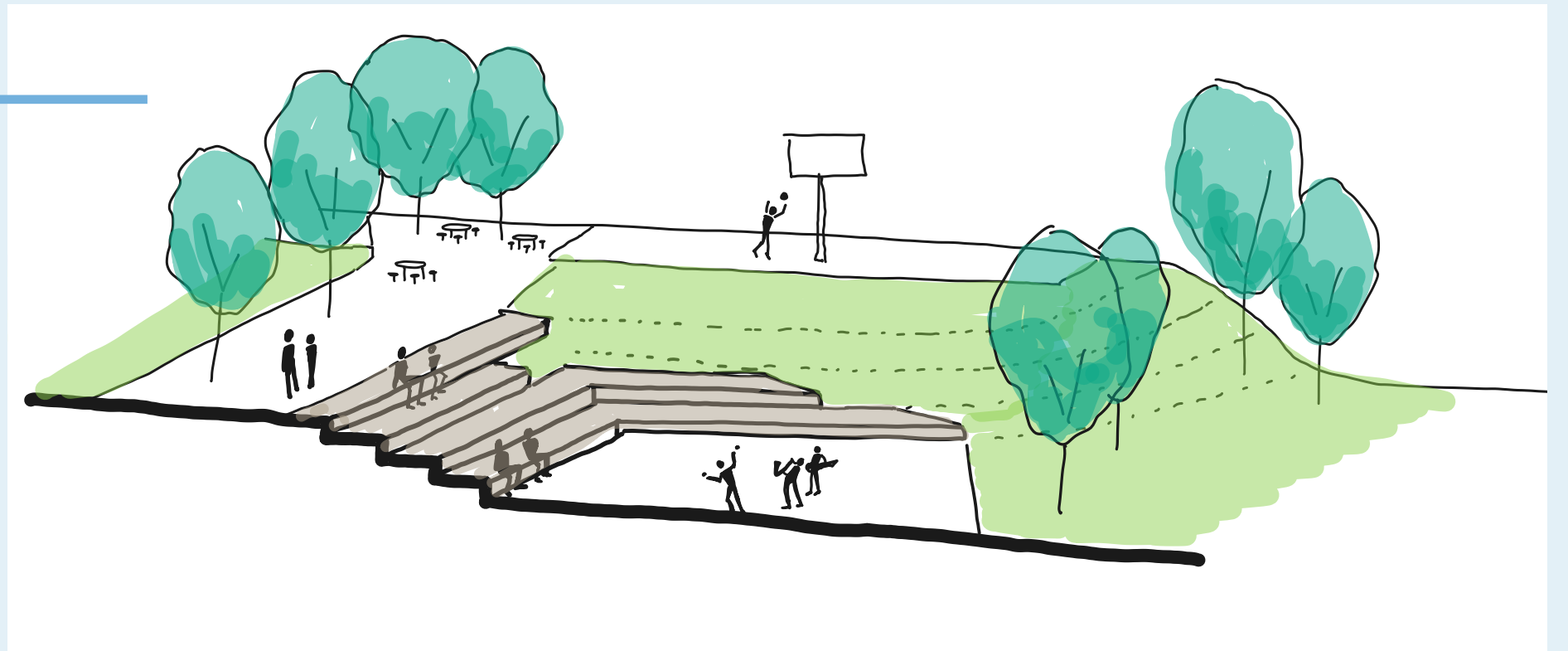
## POLL QUESTION 4

Tell us how the park can better support event and everyday use?

**A. Parallel spines with hillside bleachers**

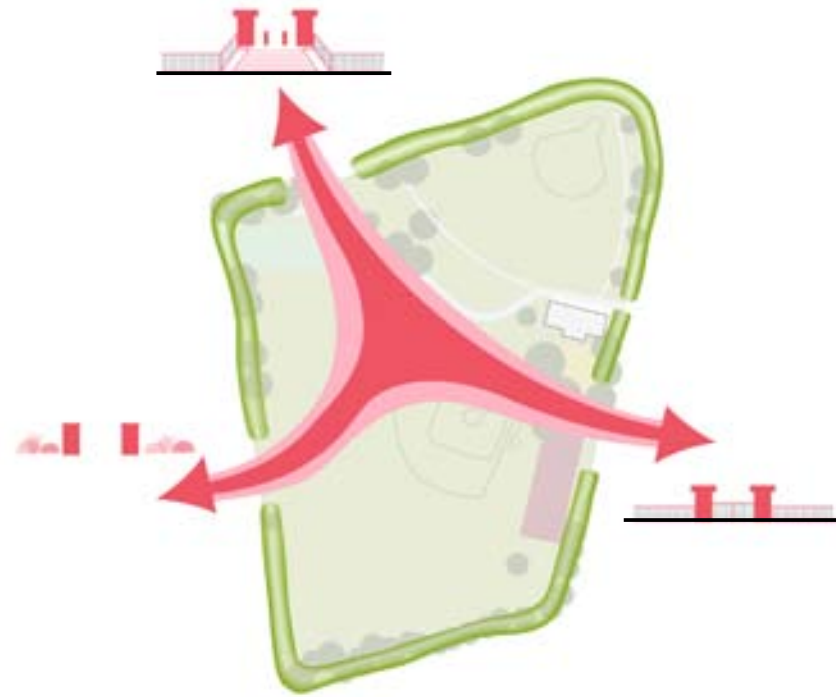


**B. Zones of sports and community gathering**



**C. Other - tell us in the chat!**

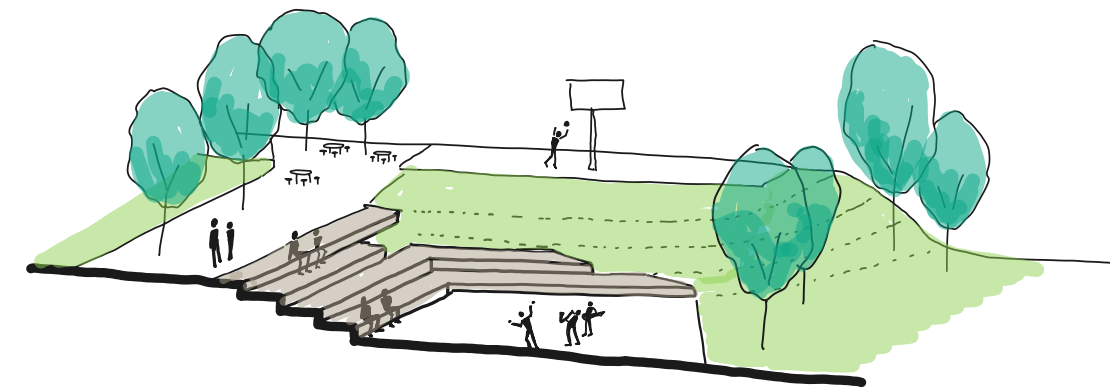
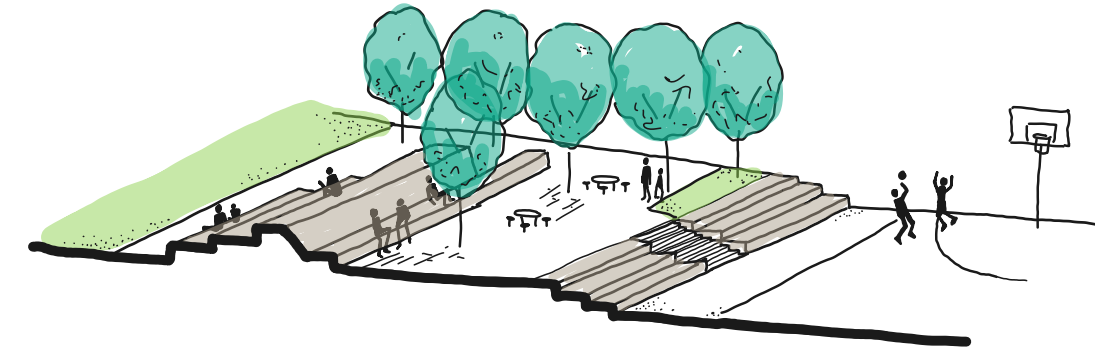
## A Welcoming and Connected Park Experience



## A Diversity of Active Recreation Opportunities



## The Heart of the Fields Corner Community



# THANK YOU!

Please join us for a discussion on the project!



City of Boston  
Parks and Recreation

Agency  
Landscape + Planning

# DISCUSSION GUIDELINES

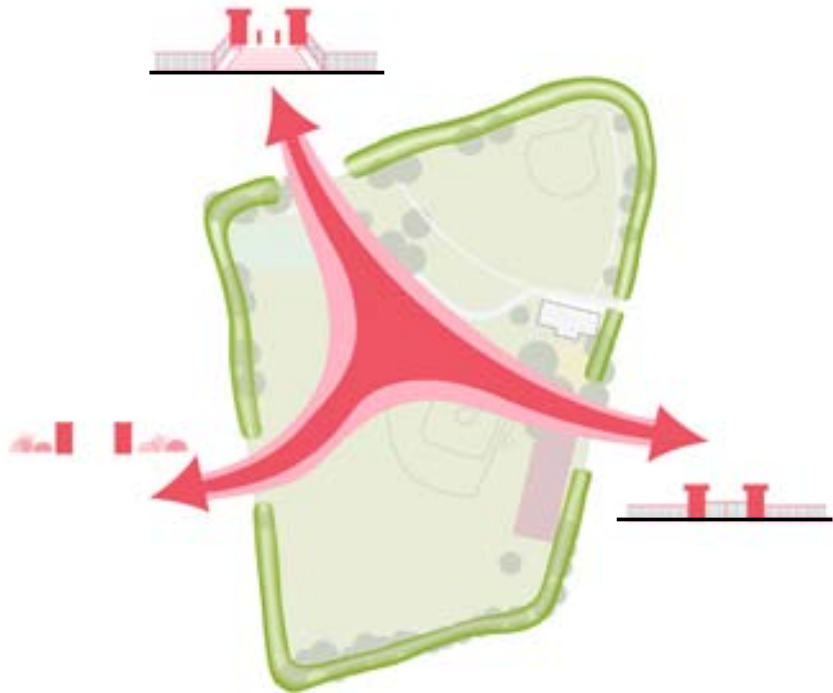
**Let's ensure the conversation is respectful and leaves room for all voices!**

- Please be respectful and mindful of each other's time when asking questions / providing comments, so that all attendees are able to participate in the meeting.
- Please wait until all attendees have had the opportunity to ask a question / provide a comment before providing additional questions / comments.
- You can always set up a conversation with Nathan Frazee, [Nathan.Frazee@boston.gov](mailto:Nathan.Frazee@boston.gov), to further discuss the project or process.



# DISCUSSION!

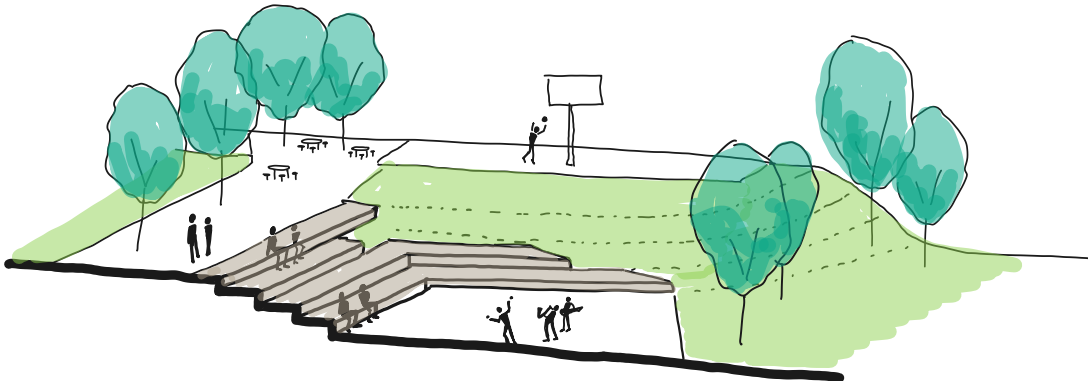
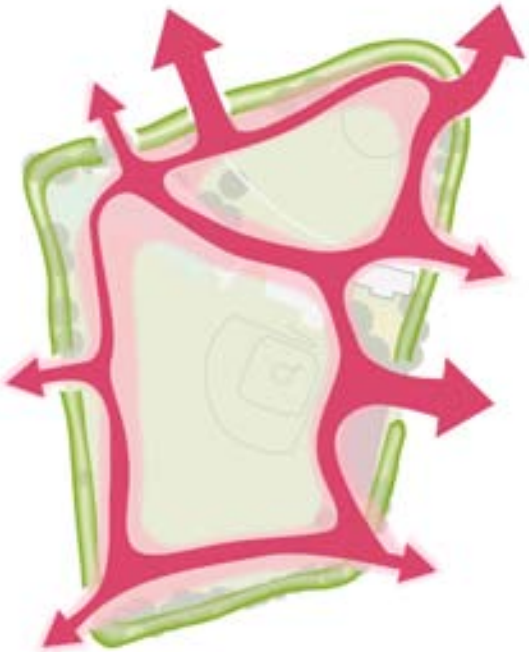
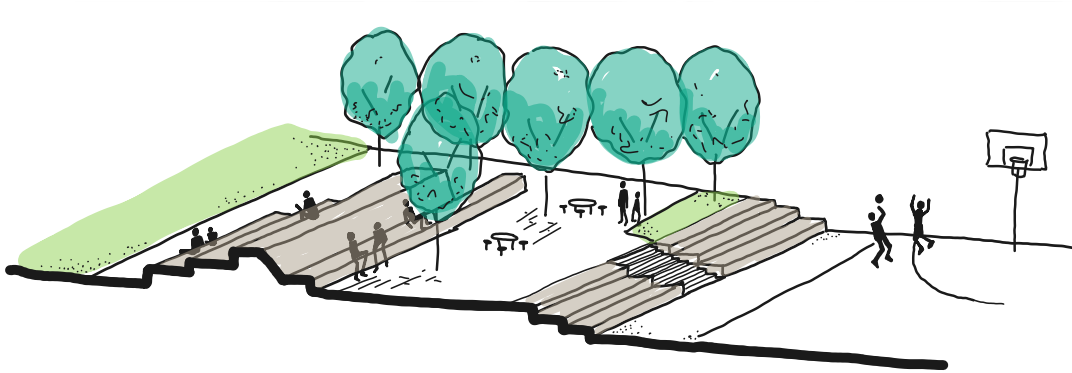
## A Welcoming and Connected Park Experience



## A Diversity of Active Recreation Opportunities



## The Heart of the Fields Corner Community



# THANK YOU!

Please visit the project webpage: [boston.gov/town-field](https://boston.gov/town-field)

The next community meeting will be in **winter 2023**

For questions, maintenance requests or concerns regarding any of our parks contact 311



# IMAGE REFERENCES

## Slide 19

Mary Hannon Park, Roxbury - City of Boston

Garvey Playground, Dorchester - <<https://urbnparks.com/boston/garvey-playground/>>

## Slide 23

McConnell Park, Boston - City of Boston

Garvey Playground, Dorchester - <<https://urbnparks.com/boston/garvey-playground/>>

Parkour Town Field, Belmont - <<https://www.instagram.com/p/CxMEp9wMwOI/>>

Moakley Park, Boston - <<https://urbnparks.com/boston/moakley-park/>>

Smith Field, Allston - <<https://urbnparks.com/boston/smith-playground/>>

## Slide 25

Langone & Puopolo Park, Boston - <<https://urbnparks.com/boston/lawn-games-boston/>>

Smith Field, Allston - <<https://urbnparks.com/boston/smith-playground/>>

Parkour Town Field, Belmont - <<https://www.instagram.com/p/CxMEp9wMwOI/>>

Colt Park, Hartford CT - <<https://www.ctinsider.com/capitalregion/article/hartford-opened-first-futsal-court-what-futsal-18283284.php>>

South Street Courts & Mall, Jamaica Plain - < <https://www.pickleheads.com/courts/us/massachusetts/boston/south-street-courts> >

## Slide 28

Garvey Playground, Dorchester - <<https://urbnparks.com/wp-content/uploads/2021/06/Garvey-Playground-12.jpg>>

Langone & Puopolo Park, Boston - <<https://urbnparks.com/boston/lawn-games-boston/>>

# Improvements to Town Field

Fields Corner, Dorchester  
Boston Parks and Recreation

**Virtual Public Meeting 2**  
12 December, 2023



City of Boston  
Parks and Recreation

Agency  
Landscape + Planning

