



Wastewater Flu & RSV Report

Updated: 26-Jan-2024 | Data Complete Through: 22-Jan-2024



wastewater@bphc.org

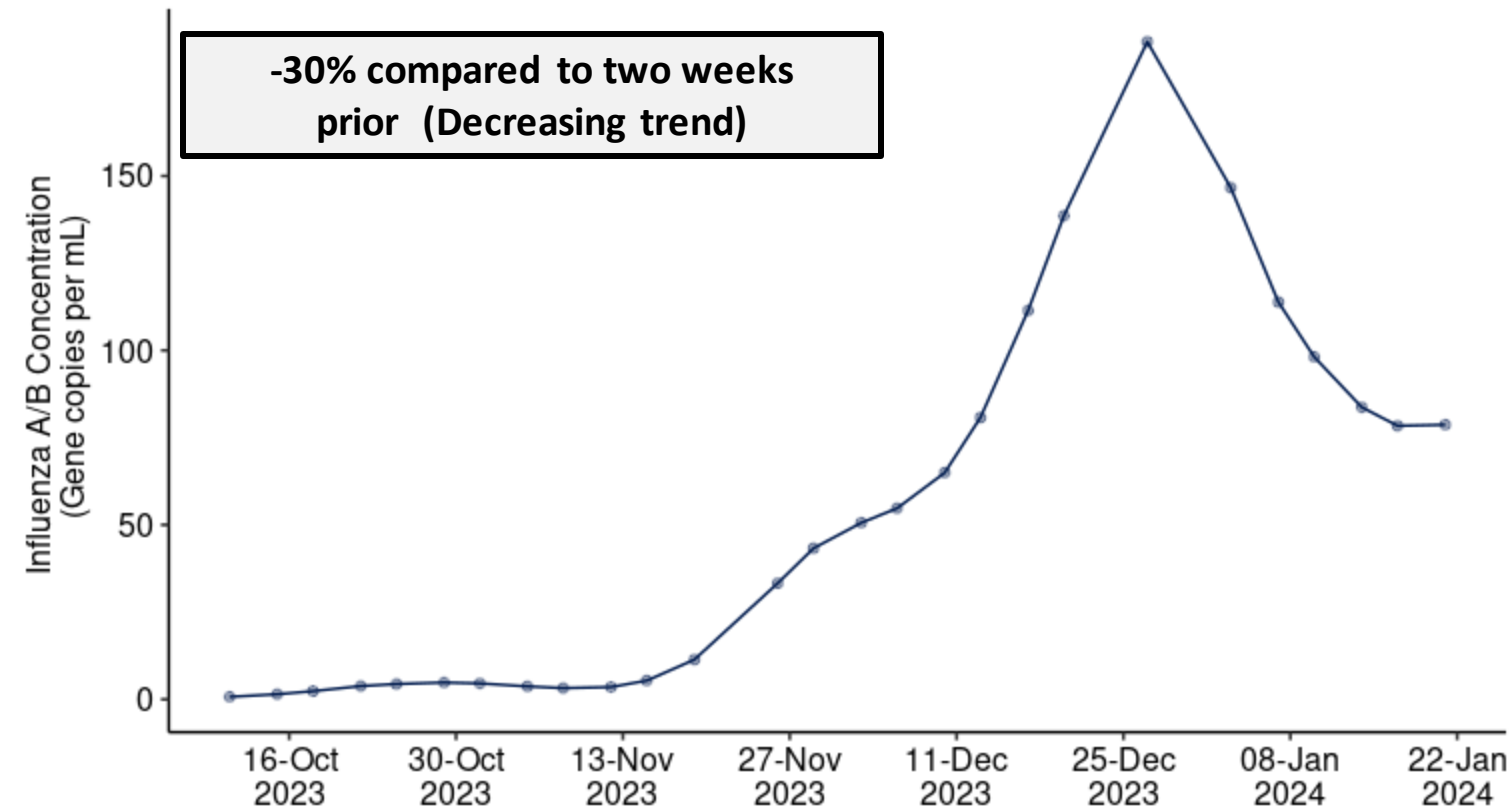


Boston Public
Health Commission

Flu Overview



Boston Citywide Wastewater Flu Signal



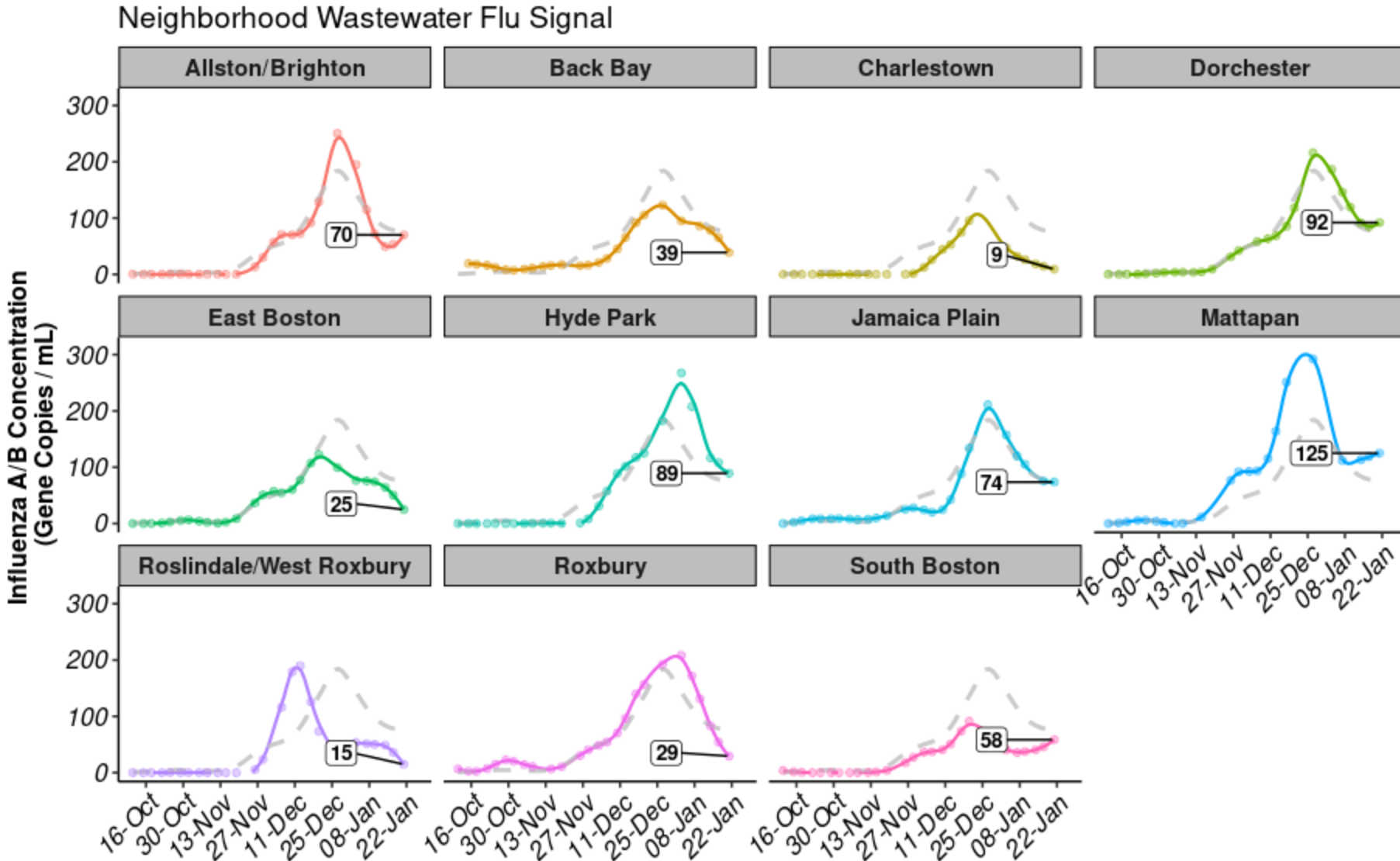
The amount of influenza A & B viruses in Boston wastewater is **decreasing**, suggesting a falling risk of flu compared to two weeks prior.

BPHC is working on methods to calculate risk levels and trends using wastewater data to assist with interpreting these results. Data collection for Influenza A & B, and RSV in Boston wastewater began in October 2022.

For more information, please visit the [Boston Wastewater Monitoring website](#).



Flu Neighborhood Trends

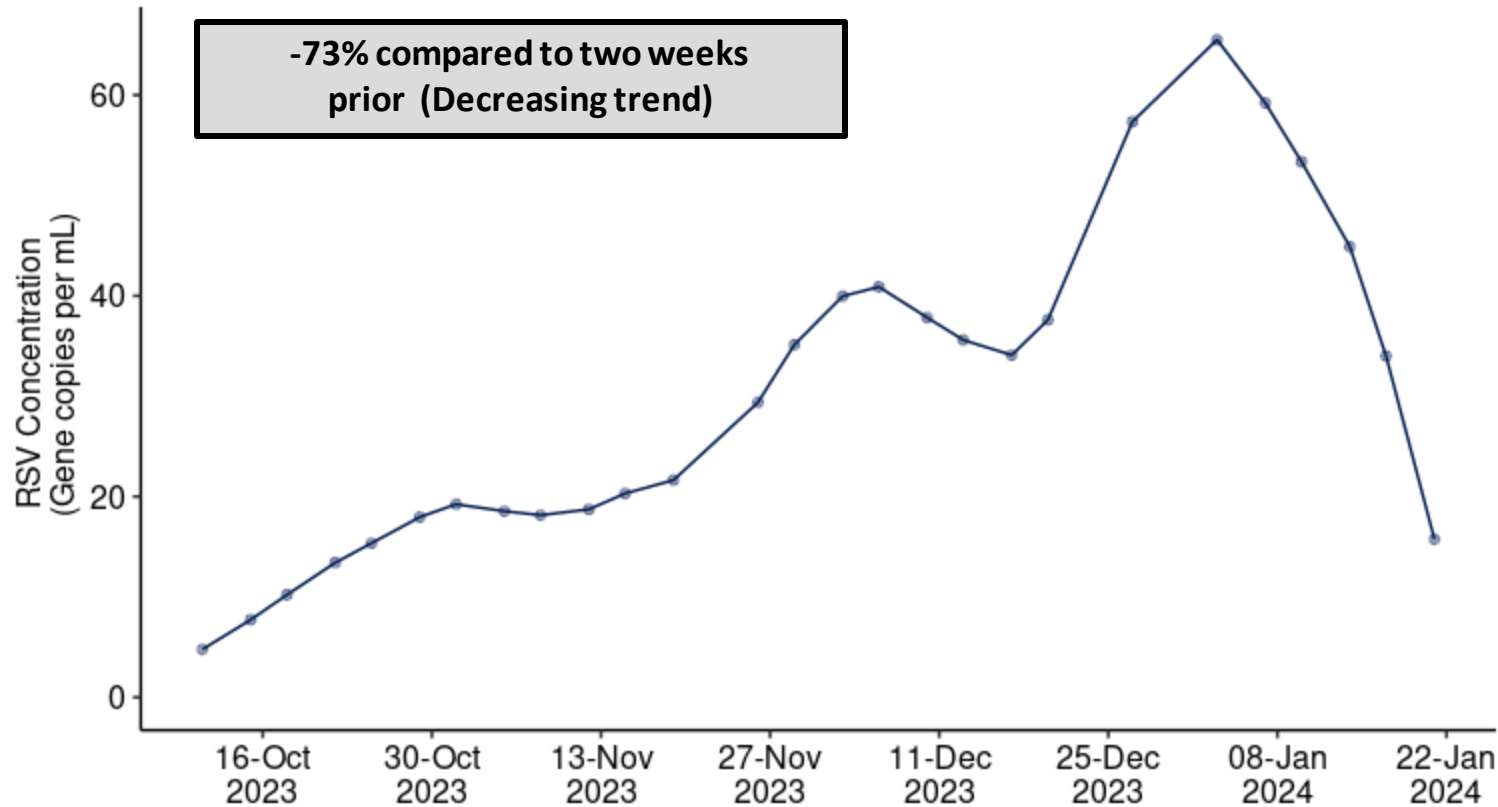


The dashed line
- - - -
Represents the Boston citywide average value



RSV Overview

Boston Citywide Wastewater RSV Signal

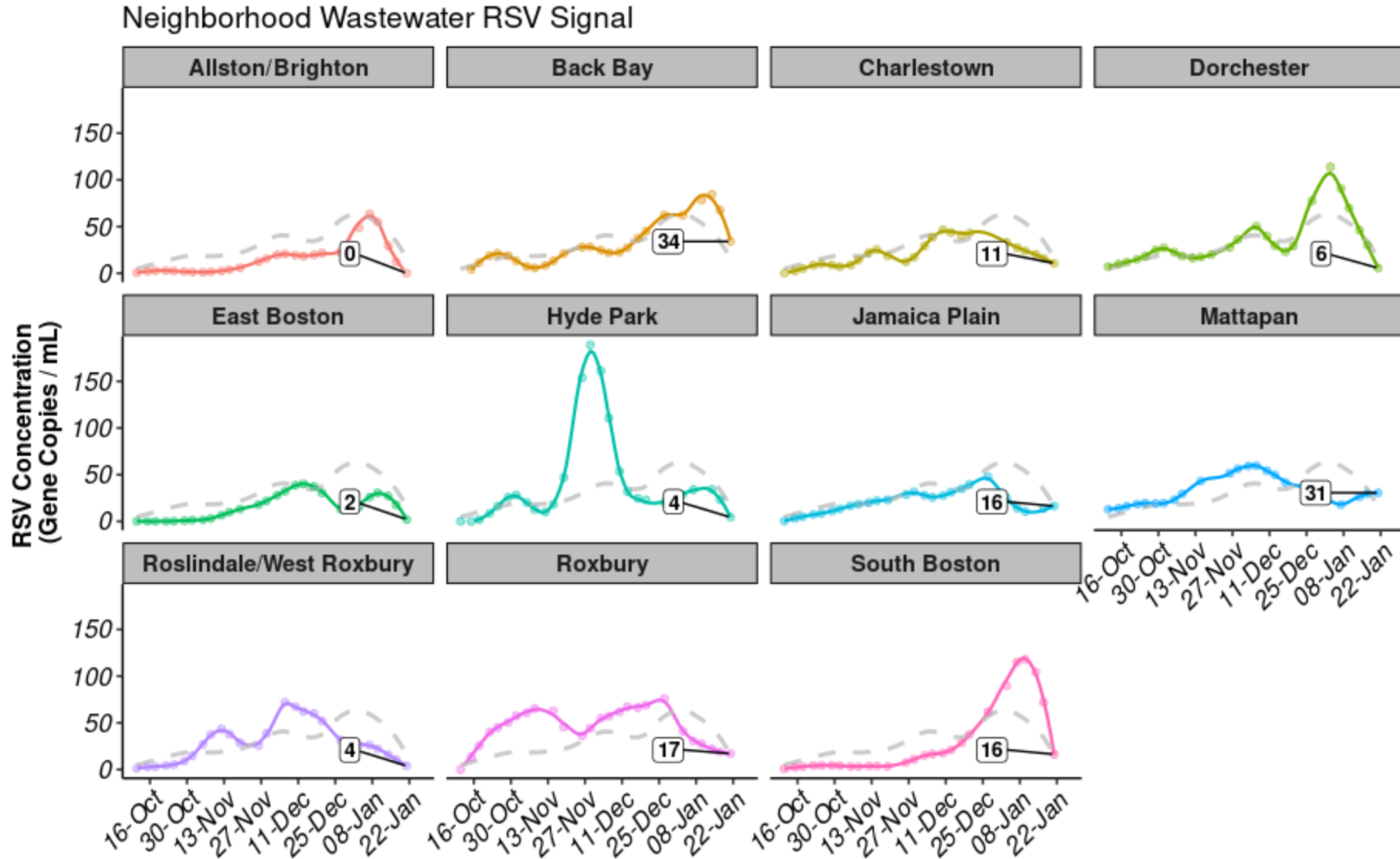


The amount of RSV in Boston wastewater is **decreasing**, suggesting a growing risk of RSV compared to two weeks prior.

BPHC is working on methods to calculate risk levels and trends using wastewater data to assist with interpreting these results. Data collection for Influenza A & B, and RSV in Boston wastewater began in October 2022.

For more information, please visit the [Boston Wastewater Monitoring website](#).

RSV Neighborhood Trends



The dashed line
 — — — — —
 Represents the Boston
 citywide average value