

A photograph of a park area with a paved path, a bench, and trees. The scene is captured in a blue-tinted style. In the background, there are residential houses and a fence.

Design Meeting #2

BYRNE PLAYGROUND



MEETING RECORDING



The Boston Parks and Recreation Department will be recording the meeting and posting to our project webpage for those who are unable to attend the Zoom meeting live.

It is possible that participants may also be recording the meeting with their phones cameras or other devices. If you do not wish to be recorded during this meeting, please keep your microphone muted and camera off.

*Please share with your neighbors and friends,
<https://www.boston.gov/departments/parks-and-recreation/improvements-byrne-playground>.*

VIRTUAL MEETING ETIQUETTE

We want to ensure this conversation is a pleasant experience for all and that all community members/stakeholders are comfortable sharing their comments, questions and feedback.

Please be respectful and mindful of each other's time when asking questions/ providing comments, so that all attendees are able to participate in the meeting.

Keep questions/ comments project-specific and not personal to yield solution-driven discussion.

Please wait until all attendees have had the opportunity to ask a question/ provide a comment before providing additional questions/ comments.

*You can always set up a conversation with **NELLE WARD, NELLE.WARD@BOSTON.GOV**, to further discuss the project or process.*

ZOOM TIPS

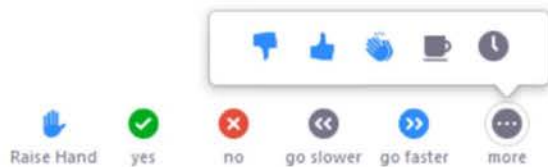
Here is how you can participate during the question and answer part of the presentation.

DURING THE PRESENTATION:



VIA WEB:

Turn video on / off.



To use these non-verbal options click on participants (bottom of screen); these options will pop up in side bar.

DURING THE Q&A:



JOINING VIA PHONE?

Use *9 to raise hand to ask for audio / video permission to ask questions or provide comments.



VIA WEB:

Chat to ask questions / comments or provide responses to poll questions



Raise hand to ask for audio / video permission to ask questions or provide comments.

PROJECT OVERVIEW

A photograph of a park area with a paved path, benches, and trees, overlaid with a blue tint and the text 'PROJECT OVERVIEW'. The scene shows a paved path leading through a park with several large trees, a chain-link fence, and residential houses in the background. A red stop sign is visible in the distance. The text 'PROJECT OVERVIEW' is written in white, bold, sans-serif font across the upper portion of the image.

AGENDA

1

PROJECT TEAM INTRODUCTION

2

PROJECT OVERVIEW

3

PRESENTATION

4

LISTENING & DISCUSSION

5

CLOSING REMARKS & NEXT STEPS

PROJECT TEAM

NELLIE WARD

Project Manager

nelle.ward@boston.gov or 617-961-3035

NAOMI COTTRELL

Principal, Crowley Cottrell

MARK WARFEL JR

Associate, Crowley Cottrell

ANA STOLLE

Designer, Crowley Cottrell

THAMMY PIERRE-LOUIS

Community Outreach Coordinator

thamara.pierrelouis@boston.gov

ROSS COCHRAN

Office Of Neighborhood Services

ross.cochran@boston.gov



PROJECT SCHEDULE & FUNDING





City of Boston
Priorities

Safety Guidelines+
Regulatory
Guidelines

**PARK
DESIGN**

Parks + Recreation
Goals

Community
Input

CITY OF BOSTON PRIORITIES

- **Family Friendly**
- **Green and Growing**
- **Healthy and Safe**
- **Delivering Exceptional City Services**
- **Closing the Racial Wealth Gap**



PARK & RECREATION GOALS

- **Accessible and available to all**
- **Diverse, balanced, and efficient mix of uses**
- **Meaningful and inclusive community engagement**
- **Adaptive and resilient landscapes**
- **Promote connections**



SURVEY RESULTS

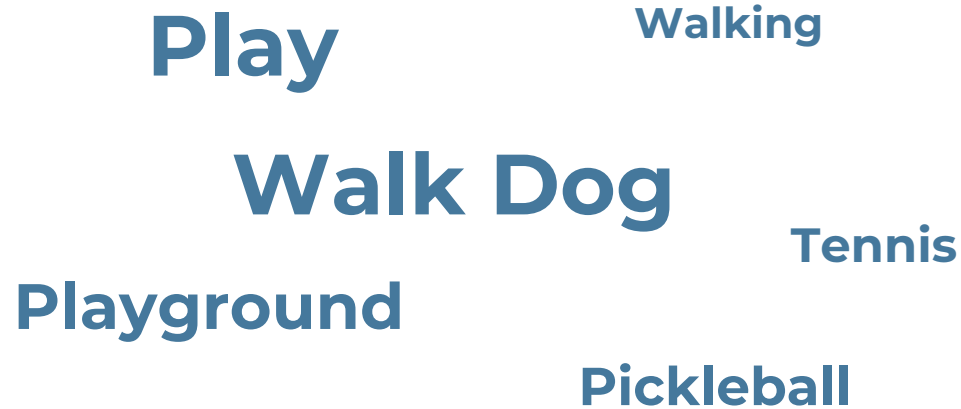


SURVEY RESPONDENTS' LOCATIONS



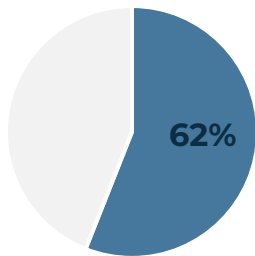
SURVEY RESULTS

What do you do in the park?

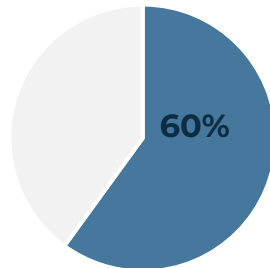


Who do you go with?

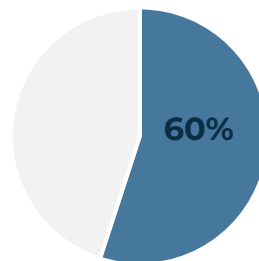
With friends / neighbors



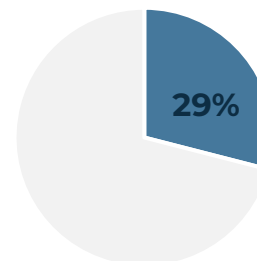
With dog



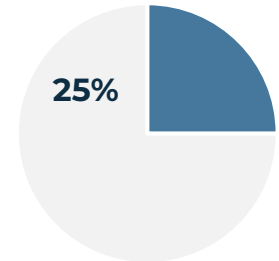
With child / grandchild



With teammate

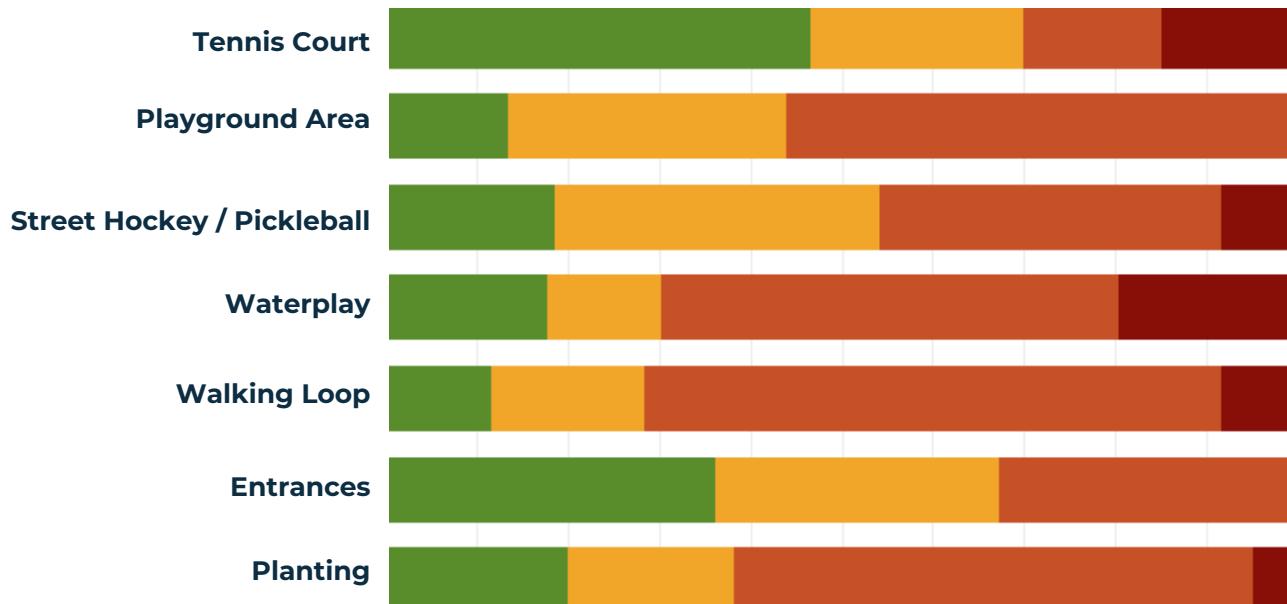


Alone



SURVEY RESULTS

Tell us about the existing amenities



Like As Is



Replace In Kind



Redesign

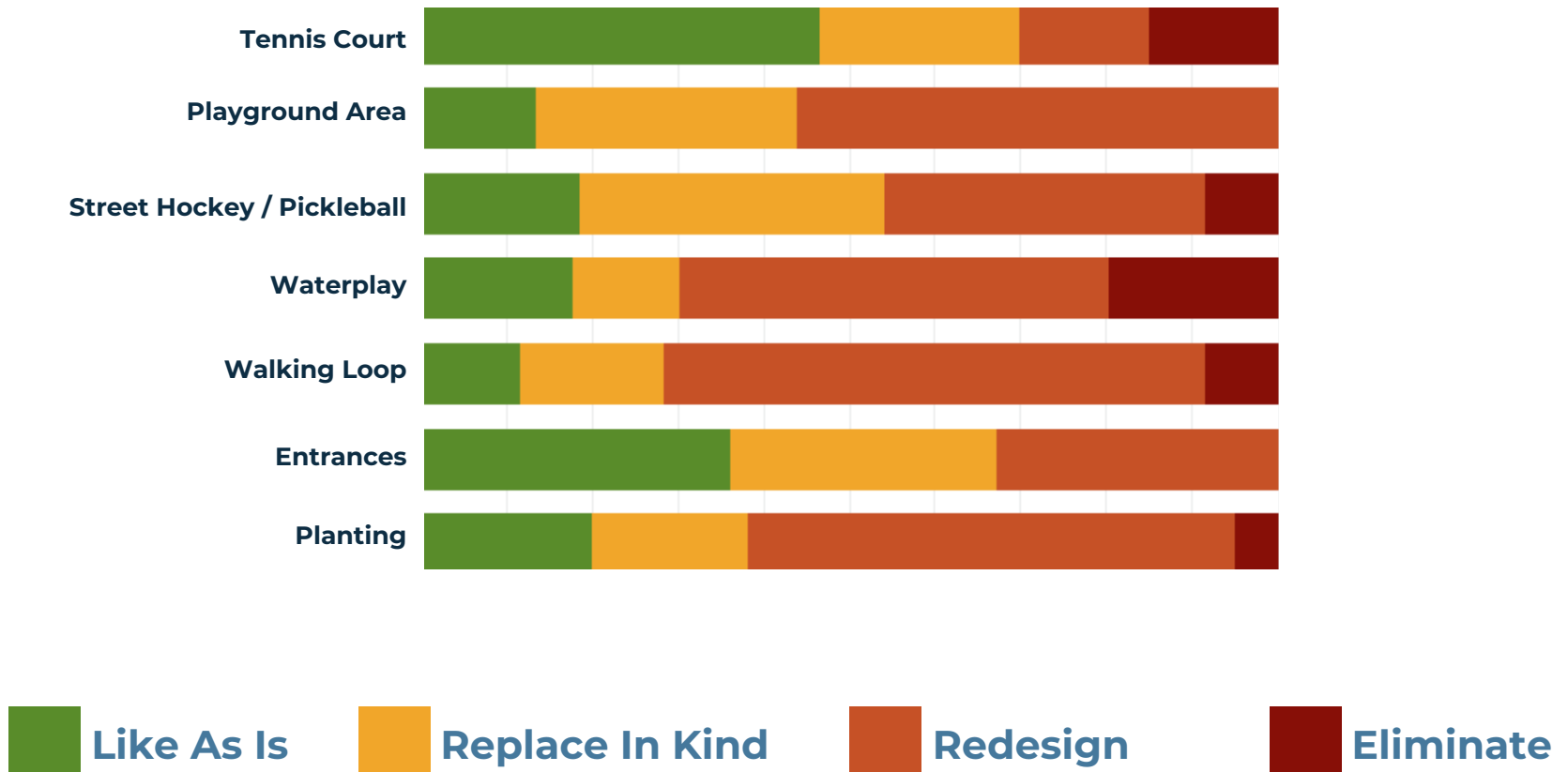


Eliminate

SURVEY RESULTS

Tell us about the existing amenities

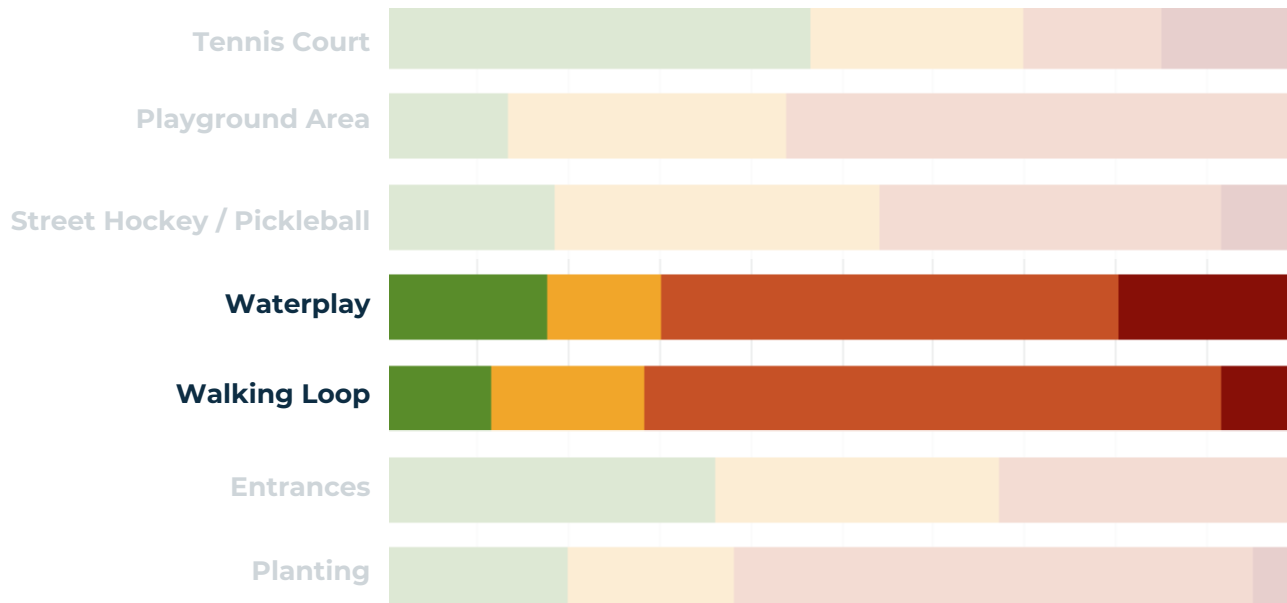
Big Take Away: People **like the amenity types** that are there, but exact locations/things are **up for improvements/redesigns**



SURVEY RESULTS

Tell us about the existing amenities

Big Take Away: Waterplay & Walking Loop are amenities needing most **improvements**



Like As Is



Replace In Kind



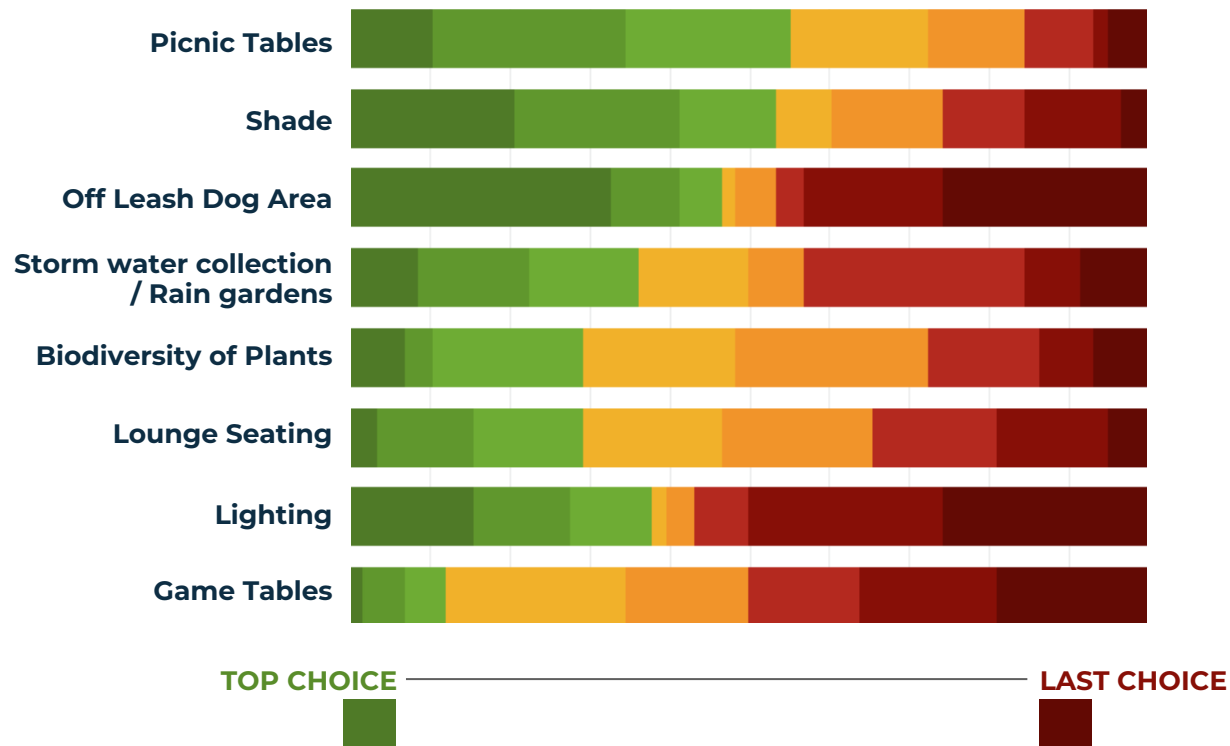
Redesign



Eliminate

SURVEY RESULTS

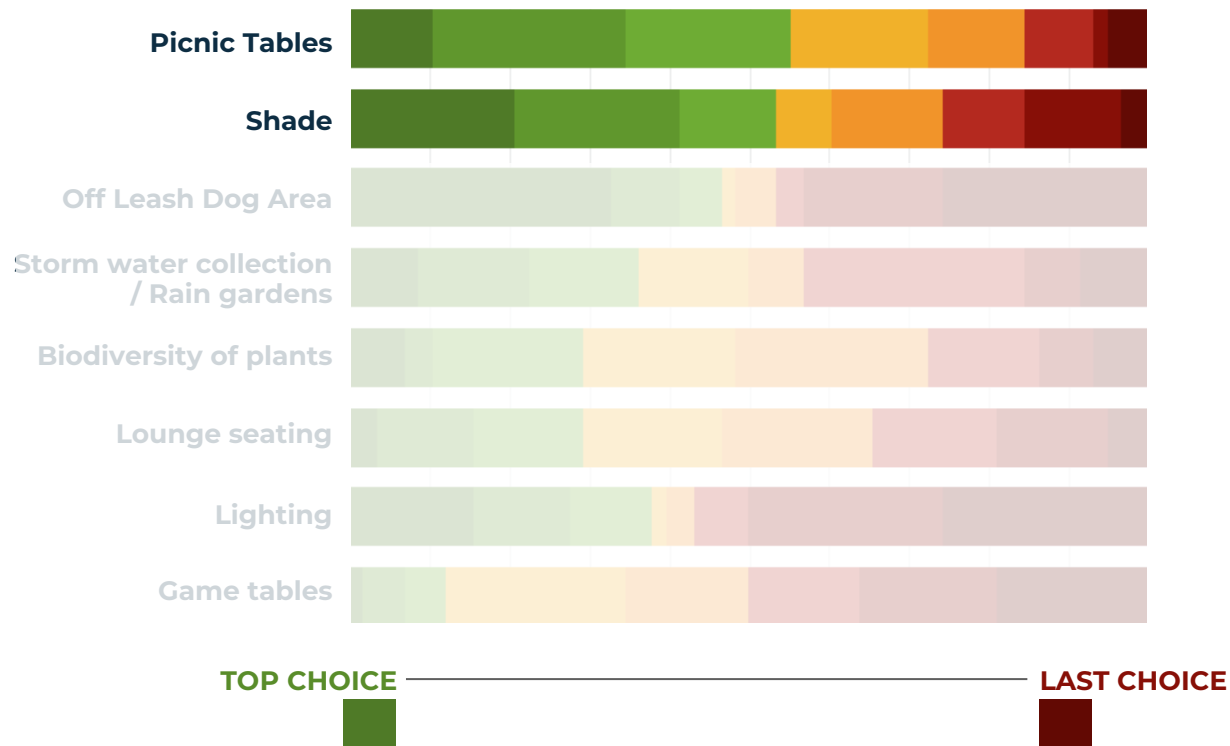
Along with recreational amenities, which passive recreation and park amenities do you think Byrne should have? Please rank



SURVEY RESULTS

Along with recreational amenities, which passive recreation and park amenities do you think Byrne should have? Please rank

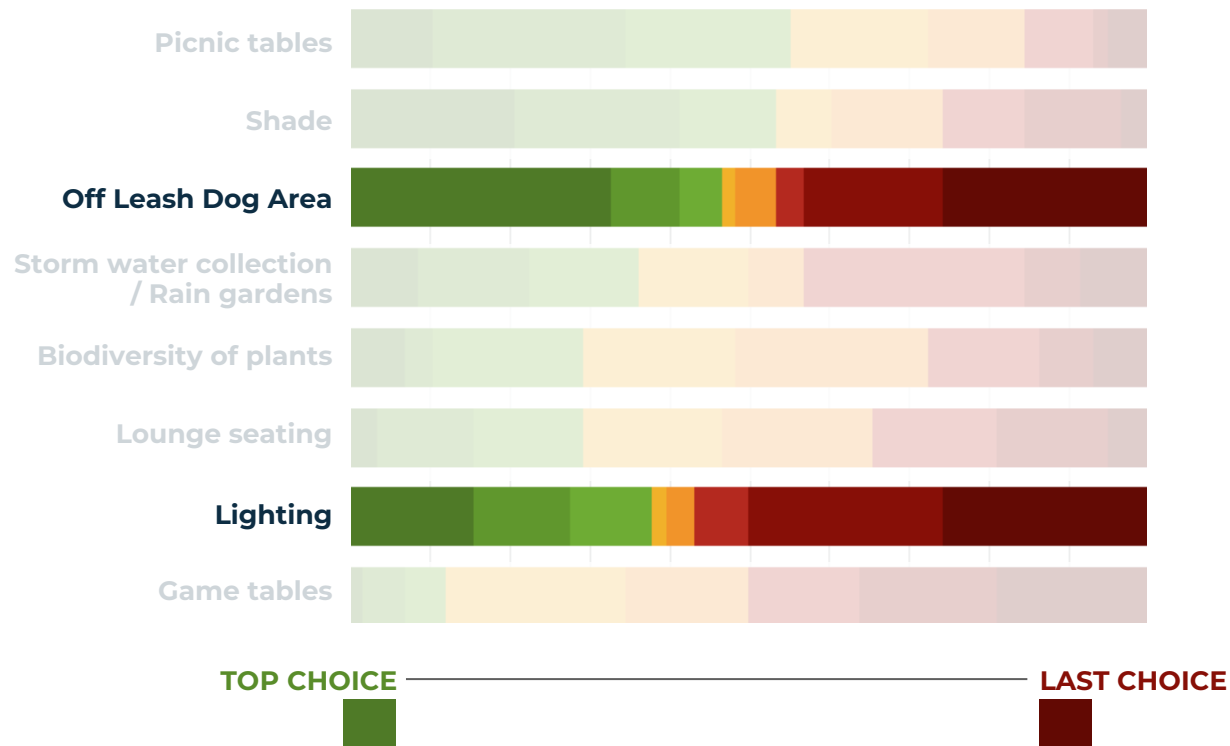
Most Wanted



SURVEY RESULTS

Along with recreational amenities, which passive recreation and park amenities do you think Byrne should have? Please rank

Greatest Difference Of Opinion



SURVEY RESULTS

What is one word to describe the park now?

Dated

Community

Worn

Neighborhood

Lacking

Typical

Adequate

Mediocre

Tired

SURVEY RESULTS

What is one word you would like to describe the park after the renovation?



SURVEY RESULTS

What is one thing you would like to see more of?

Basketball

Lighting

Vegetation

Kids Playing

Dog Area

Pickleball

Green Space

**Updated
Playground**

SURVEY RESULTS

What is one thing you would like to see less of?

Dog poop

Pickleball

Pavement

Dogs

Shrubbery

SURVEY RESULTS

Is there anything else we should know?

**Fast Cars
on Street**

Vegetation needs
maintenance or removal

Dog Waste

**Tight-Knit
Community**

Pavement cracking

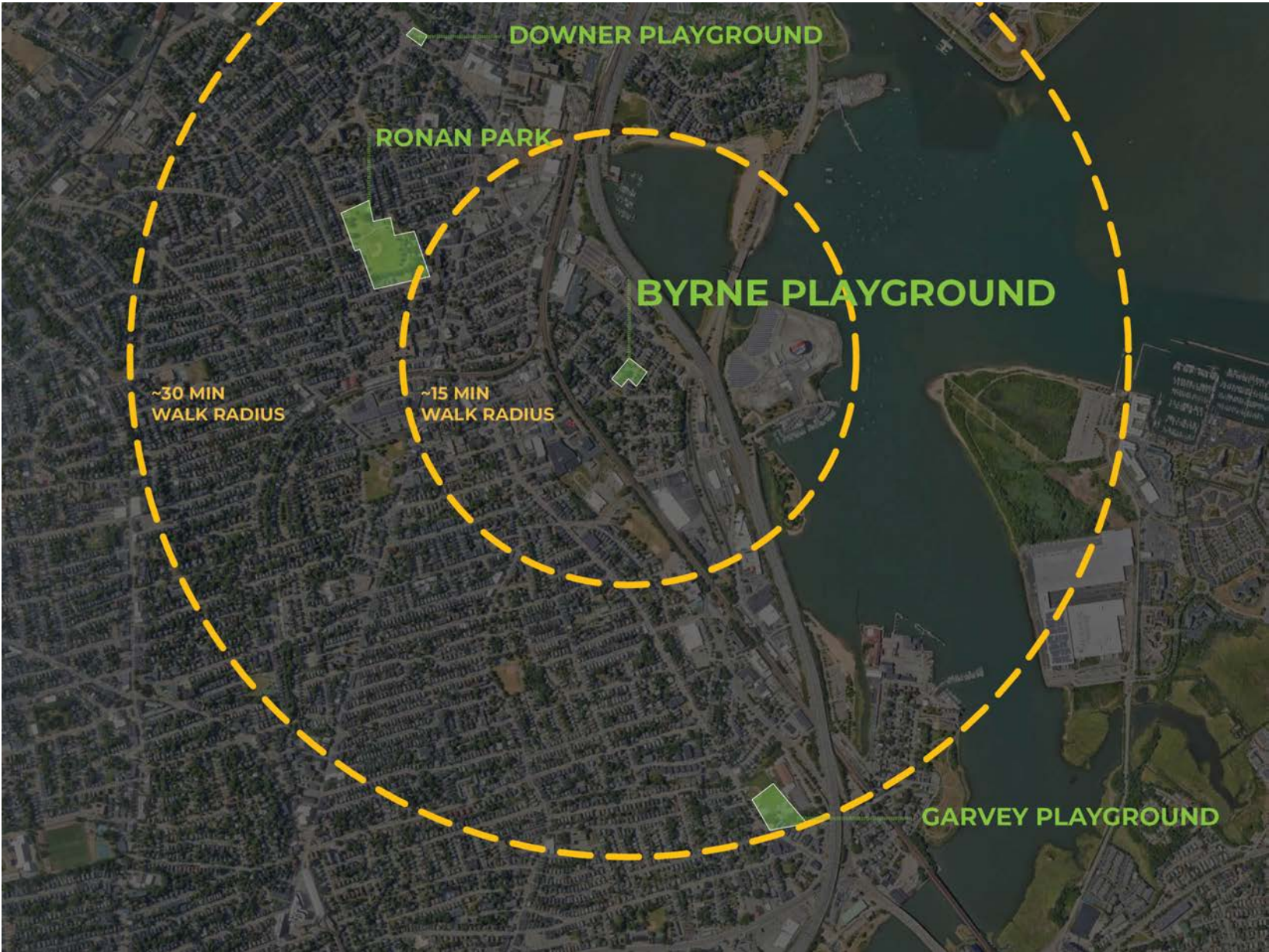
A lot of kids

**Update
Playground**

Big Take-Aways

1. This is a **tight-knit community** and the park is a **central hub**
2. Most people **like the existing amenity types**, but the park **needs a serious renovation**
3. People have **differing opinions** on **dogs, lighting & basketball**
4. People generally agree on **upgrading playground, vegetation, waterplay**, and **walking loop** area as a priority

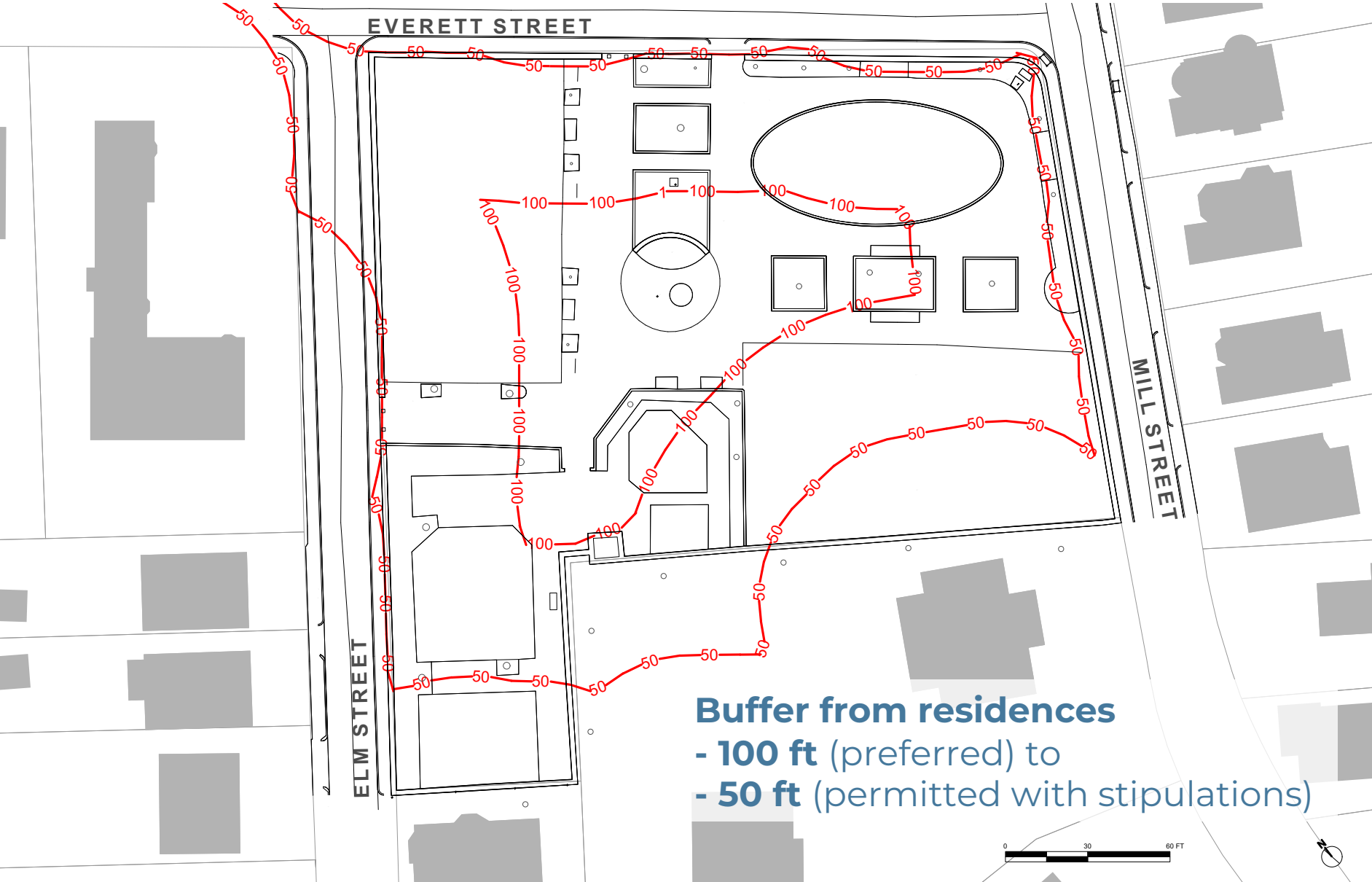
Dog Parks Nearby



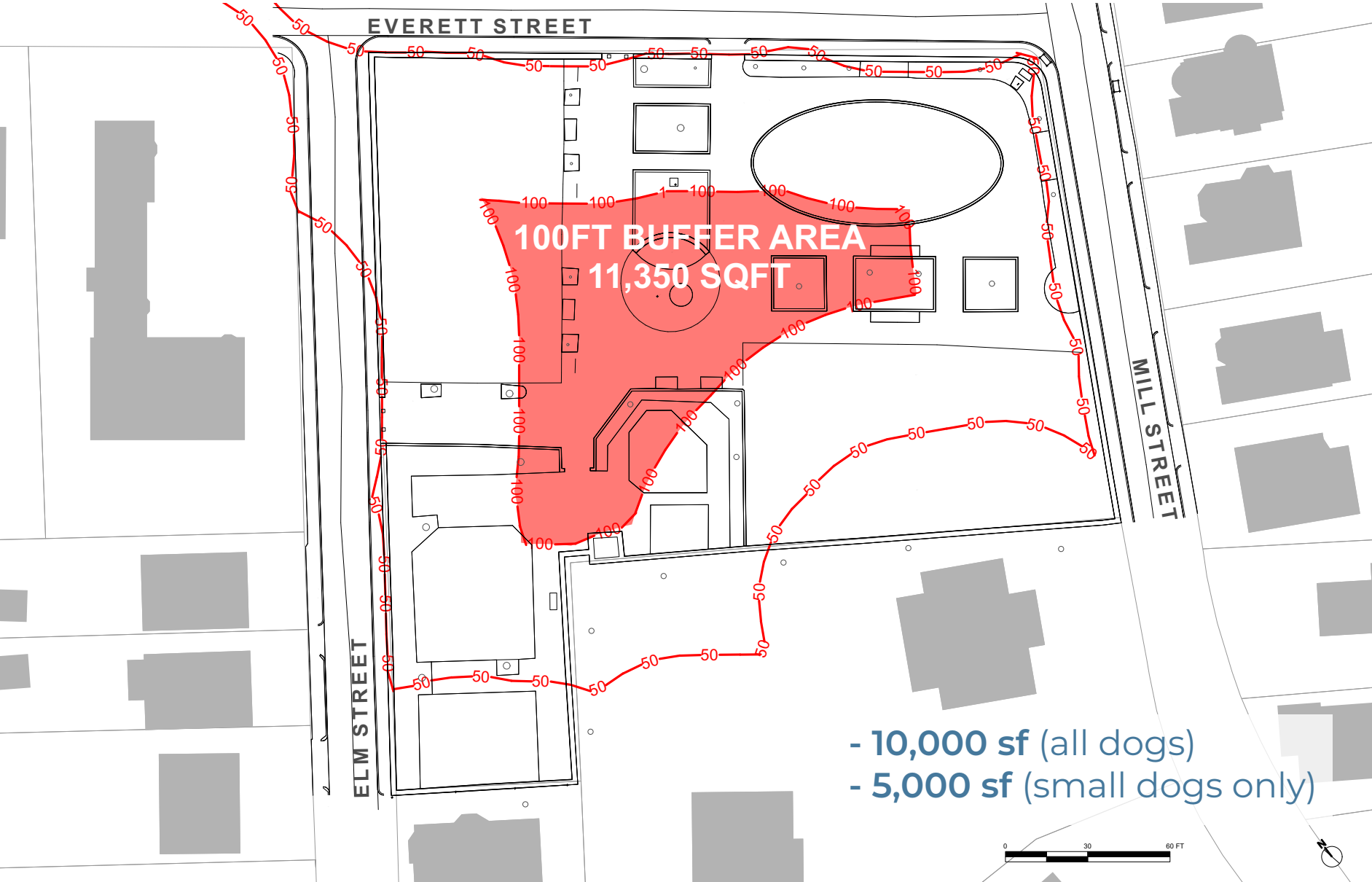
Existing Conditions



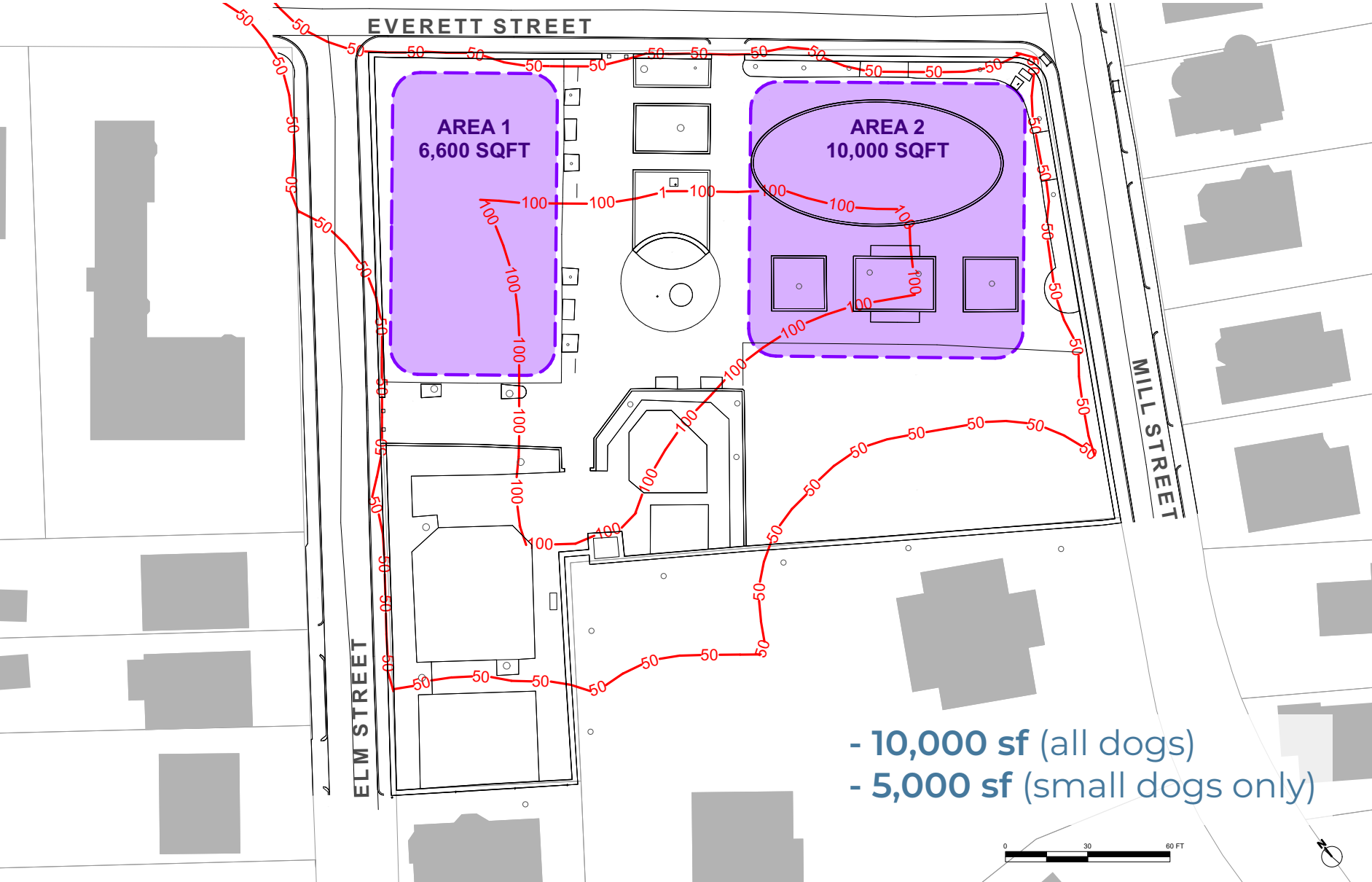
Dog Park Regulations



Dog Park Regulations



Dog Park Size Requirements



- 10,000 sf (all dogs)
- 5,000 sf (small dogs only)

Walking Loop Analysis

37%



- TREES AND BENCHES AROUND WALKING LOOP



-COMMUNITY BULLETIN BOARD & COMMUNITY PLANTER



- UTILITIES BOX IN PROMINENT AREA



- HOLES IN LAWN



- AMPLE SEATING ON PERIMETER



-CENTRAL RAISED OVAL LAWN

OPPORTUNITIES:

- SEATING WITH SHADE
- WALKING CURCUIT

CHALLENGES:

- CURBS LIMIT LAWN ACCESS
- LARGE INTERRUPTED PAVED AREAS
- LAWN LACKS SHADE
- LACKS IMAGINATION

Fencing Analysis



Existing Conditions



Existing Conditions



Existing Conditions & Proposed



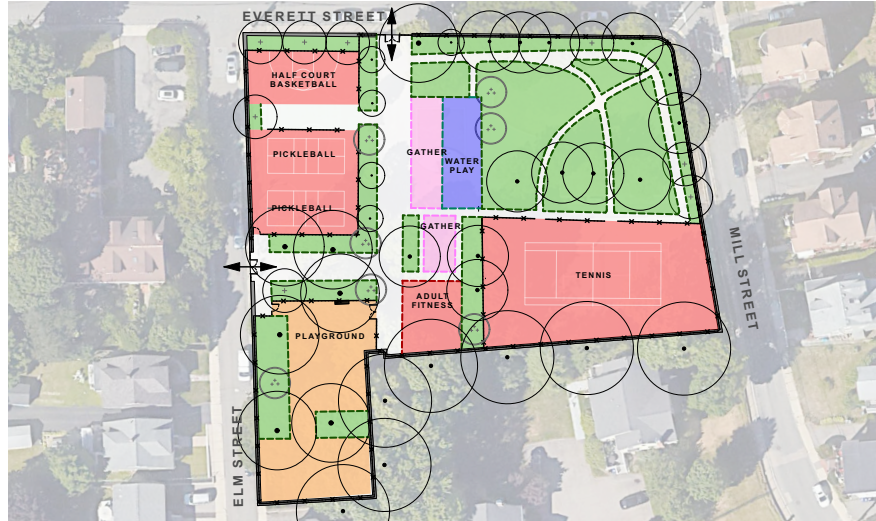
Existing



Opt 1 – Renovate and Celebrate



Opt 2 – Line of Gathering



Opt 3 – Get Active

Option 1 Renovate and Celebrate



Option 1 Renovate and Celebrate



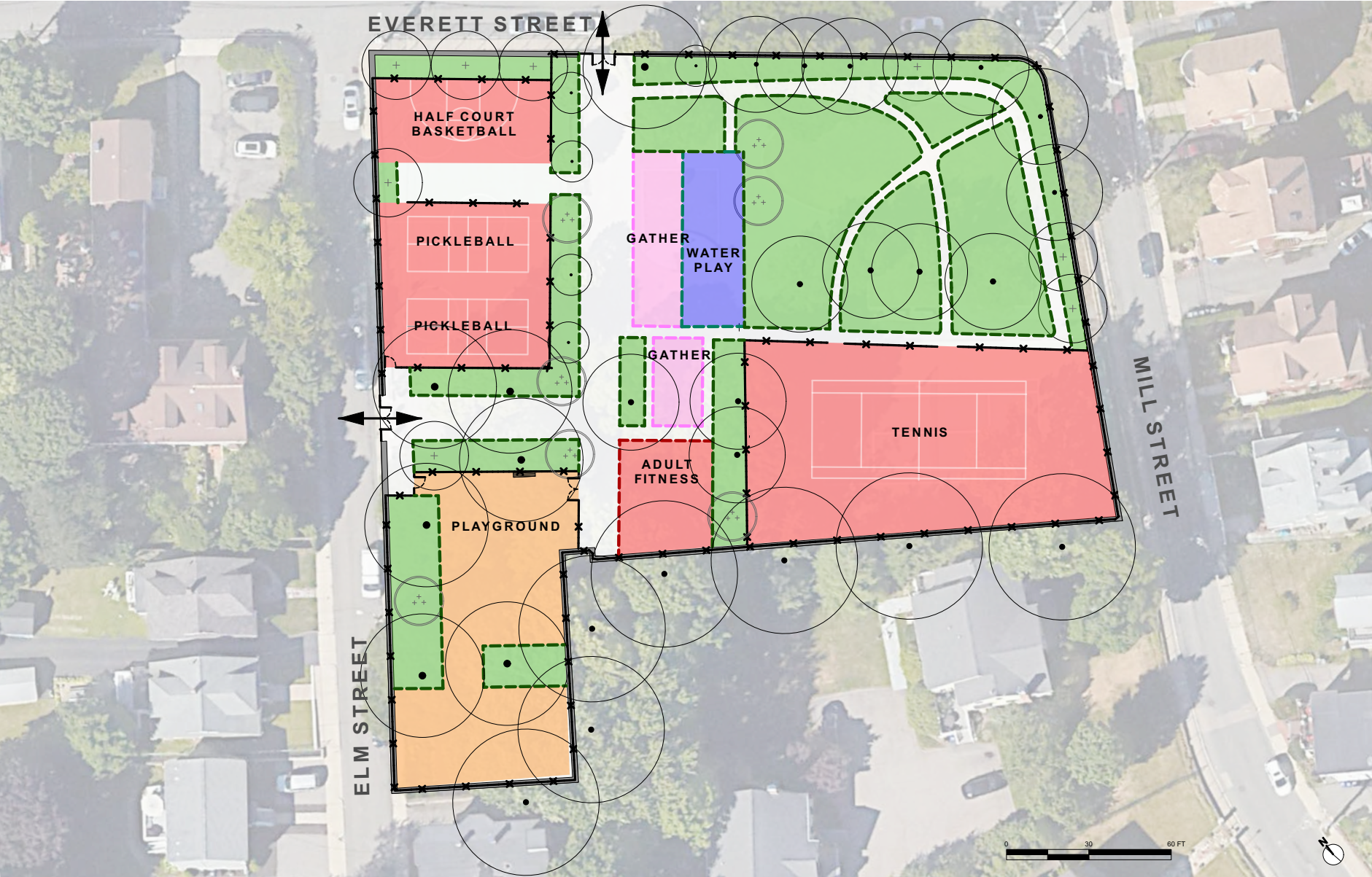
Option 2 Line of Gathering



Option 2 Line of Gathering



Option 3 Get Active



Option 3 Get Active



Existing Conditions & Proposed



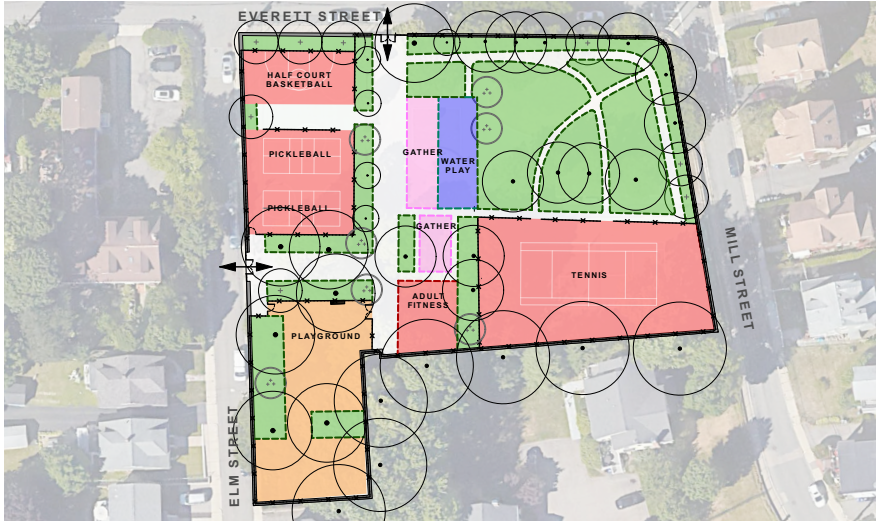
Existing



Opt 1 – Renovate and Celebrate



Opt 2 – Line of Gathering



Opt 3 – Get Active

A blurred photograph of a public meeting or community discussion. The scene is set in a room with a projector screen at the front. A person is standing near the screen, possibly presenting. The audience is seated in rows of chairs, facing the front of the room. The overall image has a blue tint.

LISTENING & DISCUSSION

Help us build great parks.
Let us know what matters to you.

General Discussion

- **Pickleball** – Do you need a third court? Or could a third court be a half-court basketball?
- **Tennis** – do you mind sharing with a half-court basketball? Or should basketball be its own area?
- **Adult Fitness** – is there interest in equipment for working out?
- **Lawn** – How continuous of a space do you like? Just paths around the edge or paths through it for strolling? Is there any interest in a tricycle track?
- **Waterplay** – We have had success with linking waterplay to other programs. Do you like this idea or should we place it near the playground?
- **Dog Park** – Is a dog park valuable enough to give up tennis? Or the lawn? Or something else?

Key Questions

- Is there something we missed?
- Are you concerned about the direction of any of these improvements?
- After seeing the results of the neighborhood option survey, are there things you disagree with or want to discuss further?



THANK YOU!

Next Meeting: March/April

For questions, maintenance requests or concerns regarding any of our parks contact 311



NELLE WARD
Nelle.ward@boston.gov



February 2024
Boston Parks and Recreation

