

# FIELD IMPROVEMENTS AT MURPHY PLAYGROUND



# MEETING RECORDING



The Boston Parks and Recreation Department will be recording the meeting and posting to our project webpage for those who are unable to attend the Zoom meeting live.

It is possible that participants may also be recording the meeting with their phones cameras or other devices. If you do not wish to be recorded during this meeting, please keep your microphone and camera off.

# VIRTUAL MEETING ETIQUETTE

*We want to ensure this conversation is a pleasant experience for all and that all community members/stakeholders are comfortable sharing their comments, questions and feedback.*

*Please be respectful and mindful of each other's time when asking questions/ providing comments, so that all attendees are able to participate in the meeting.*

*Keep questions/ comments project-specific and not personal to yield solution-driven discussion.*

*Please wait until all attendees have had the opportunity to ask a question/ provide a comment before providing additional questions/ comments.*

*You can always set up a conversation with NELLE WARD, [nelle.ward@boston.gov](mailto:nelle.ward@boston.gov), to further discuss the project or process.*

# ZOOM TIPS

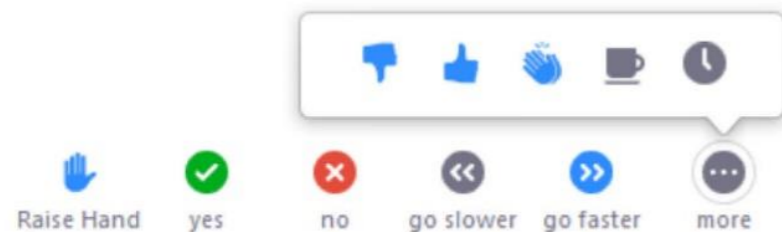
Here is how you can participate during the question and answer part of the presentation.

## DURING THE PRESENTATION:



### VIA WEB:

Turn video on / off.



To use these non-verbal options click on participants (bottom of screen); these options will pop up in side bar.

## DURING THE Q&A:



### JOINING VIA PHONE?

Use \*9 to raise hand to ask for audio / video permission to ask questions or provide comments.



### VIA WEB:

Chat to ask questions / comments or provide responses to poll questions



Raise hand to ask for audio / video permission to ask questions or provide comments.

# AGENDA

---

1

**PROJECT TEAM INTRODUCTION**

---

2

**PROJECT OVERVIEW**

---

3

**SITE ANALYSIS & DESIGN CONCEPTS**

---

4

**LISTENING & DISCUSSION**

---

5

**CLOSING REMARKS & NEXT STEPS**

---

# PROJECT TEAM

---

## **NELLE WARD**

PROJECT MANAGER

[Nelle.Ward@boston.gov](mailto:Nelle.Ward@boston.gov) or 617-961-3035

## **DENIS (D.J.) CHAGNON**

Principal, CBA Landscape Architects LLC

## **PRESTON HOLLEMAN**

Senior Landscape Architect, CBA Landscape Architects LLC

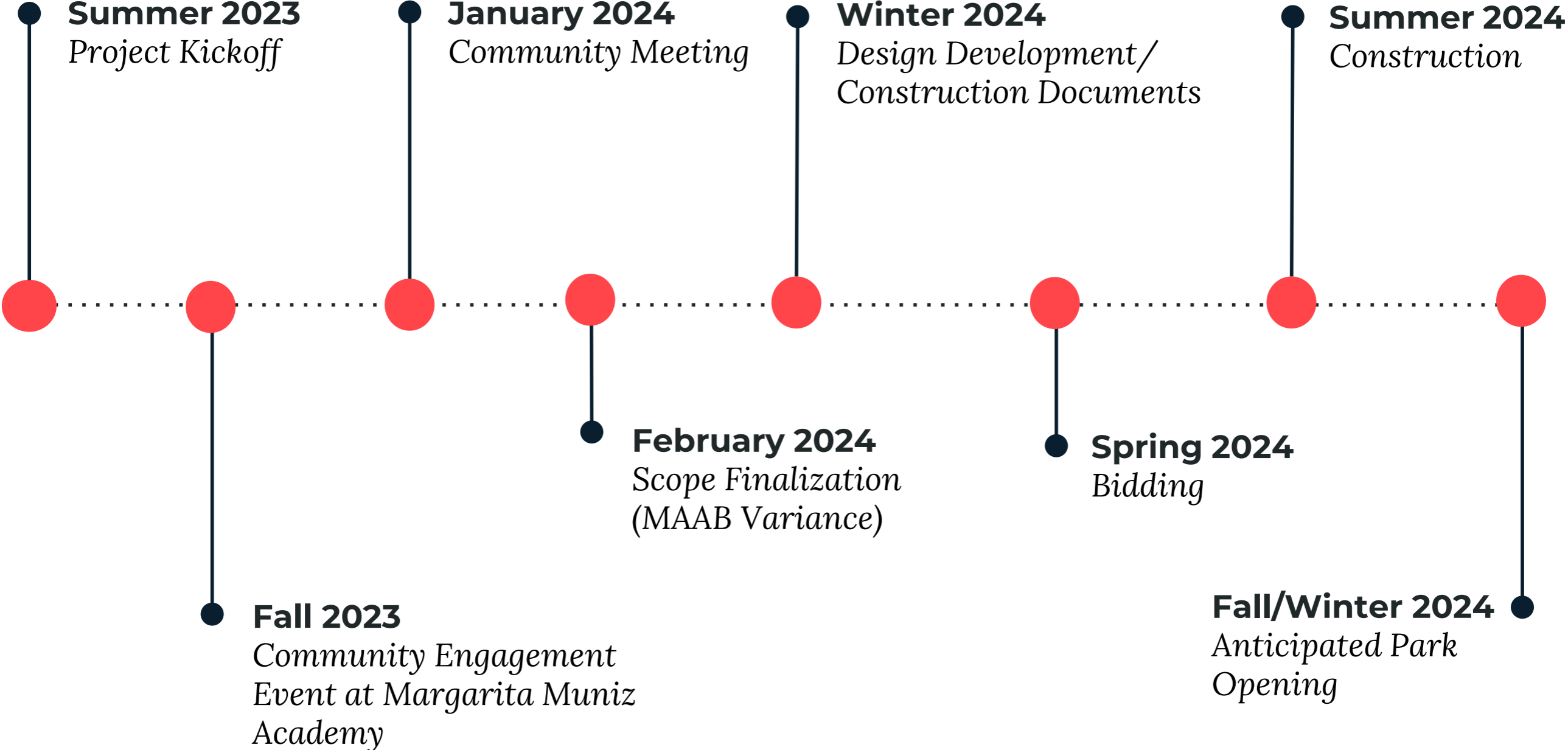


# PROJECT OVERVIEW



# PROJECT SCHEDULE

---







City of Boston  
Priorities

Safety Guidelines+  
Regulatory  
Guidelines

**PARK  
DESIGN**

Parks + Recreation  
Goals

Community  
Input

# CITY OF BOSTON PRIORITIES

---

- **Expanding walkable access to parks**
- **Addressing equity**
- **Climate resilience**
- **Health**
- **Housing and community building**



# PARK & RECREATION GOALS

---

- **Accessible and available to all**
- **Diverse, balanced, and efficient mix of uses**
- **Meaningful and inclusive community engagement**
- **Adaptive and resilient landscapes**
- **Promote connections**









An aerial photograph of a residential neighborhood, overlaid with a semi-transparent blue filter. The image shows a dense cluster of houses with various rooflines and colors, interspersed with green trees. In the center of the neighborhood, there is a large, open, light-colored area that appears to be a field or a large lawn. To the left of this field, there are several buildings, including what looks like a school or community center, and a tennis court. The overall scene is a typical suburban residential area.

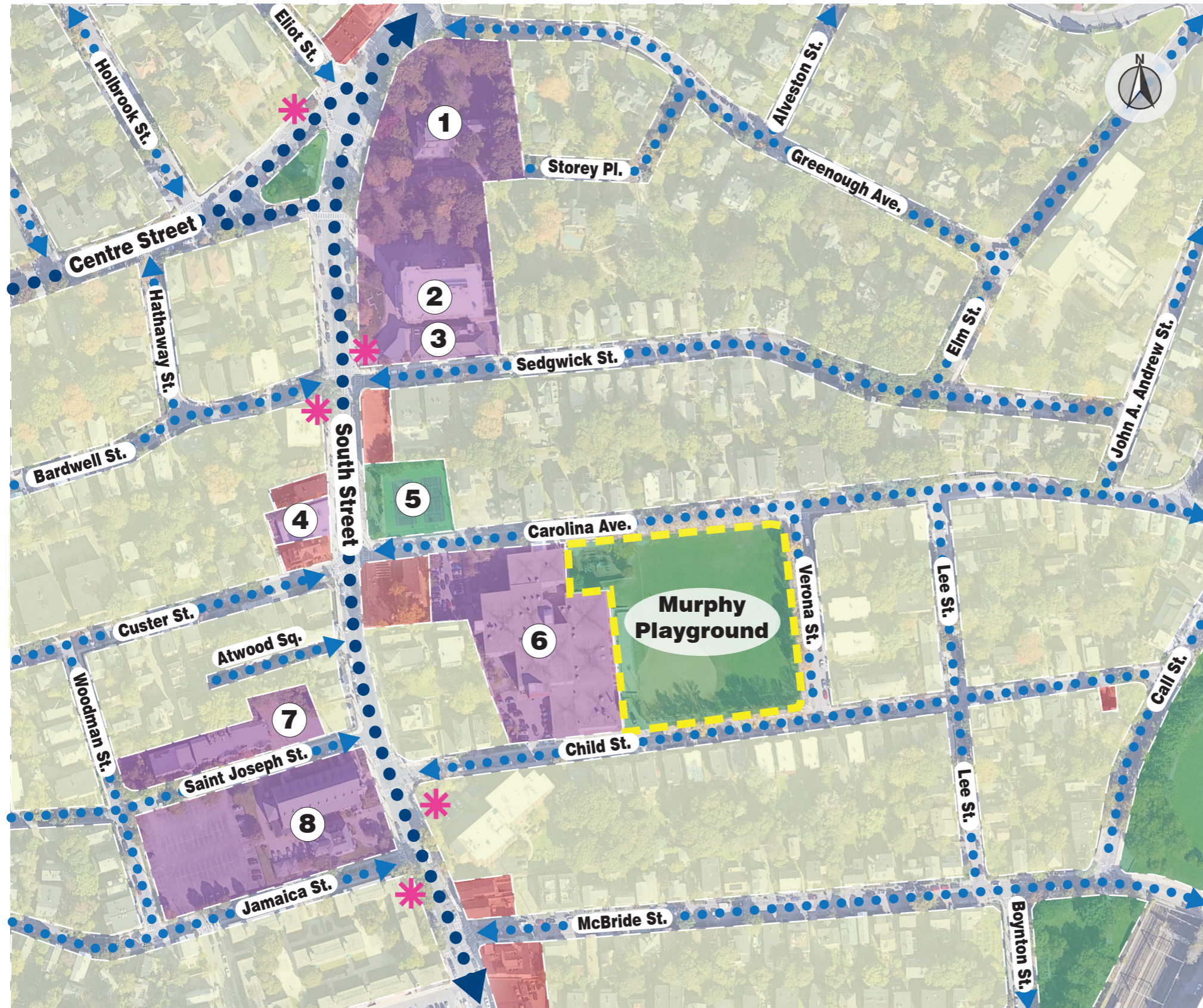
# SITE ANALYSIS

# NEIGHBORHOOD CONTEXT



-  Green Space
-  Train/Subway Station
-  Subway/Train
-  Major Vehicular Corridors
-  Primary Neighborhood Roads
-  Neighborhood Side Streets

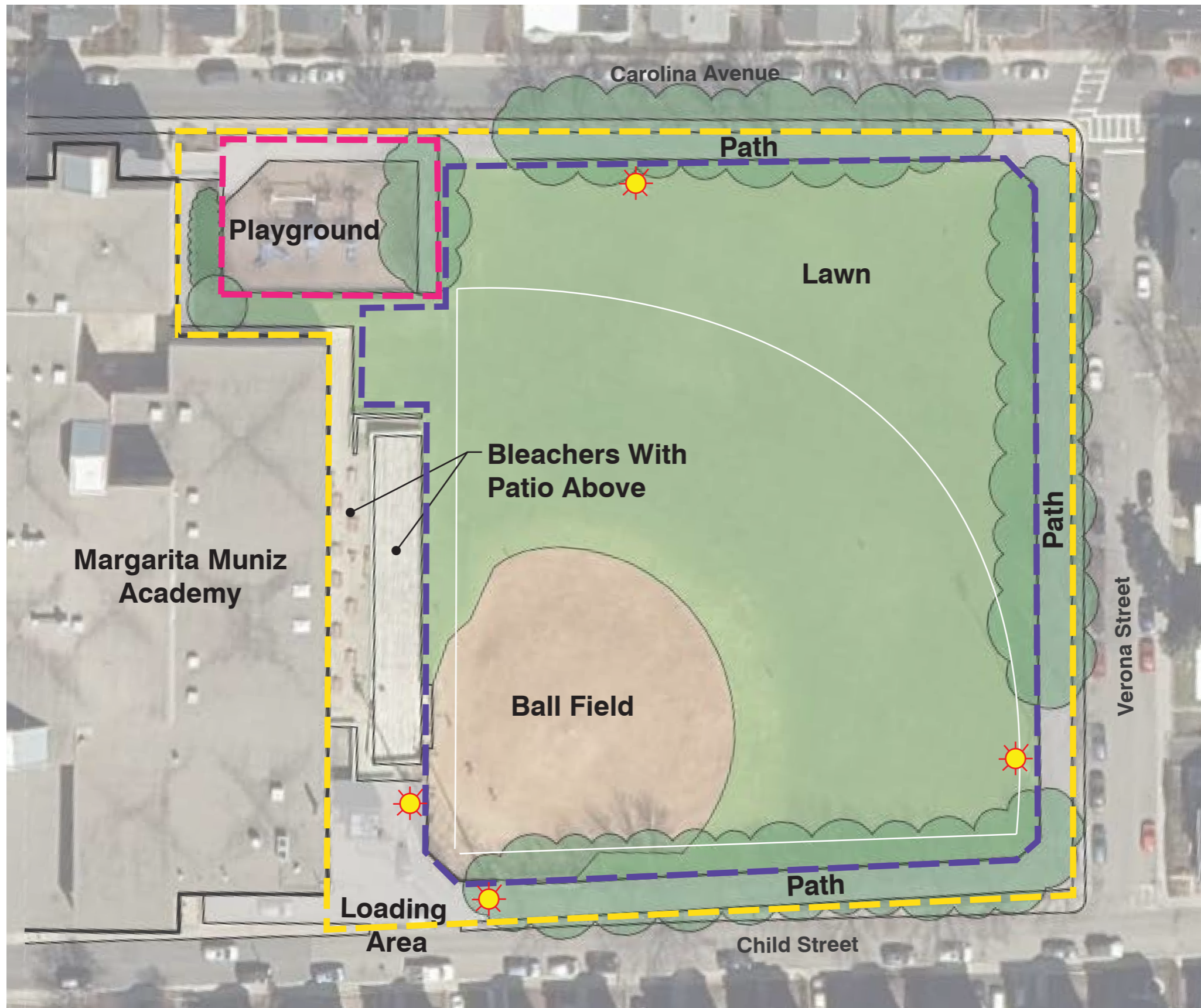
# IMMEDIATE SURROUNDINGS



- Green Space
- Residential
- Commercial
- Institutional
- ✱ Bus Stop
- Primary Road
- Side Street
- # Key Sites & Buildings, See List Below

- Key Sites & Buildings**
1. Loring Greenough House
  2. Curtis Hall Community Center
  3. J.P Boston Public Library
  4. Pine Village Preschool
  5. South St. Mall & Courts
  6. Margarita Muniz Academy
  7. Catholic Charities Friendly
  8. St. Thomas Aquinas Parish

# EXISTING CONDITIONS



## Murphy Playground

Total Park Area =  
111,500+/-

Sports/Lawn Area =  
81,700+/-

Playground Area =  
6,200+/-

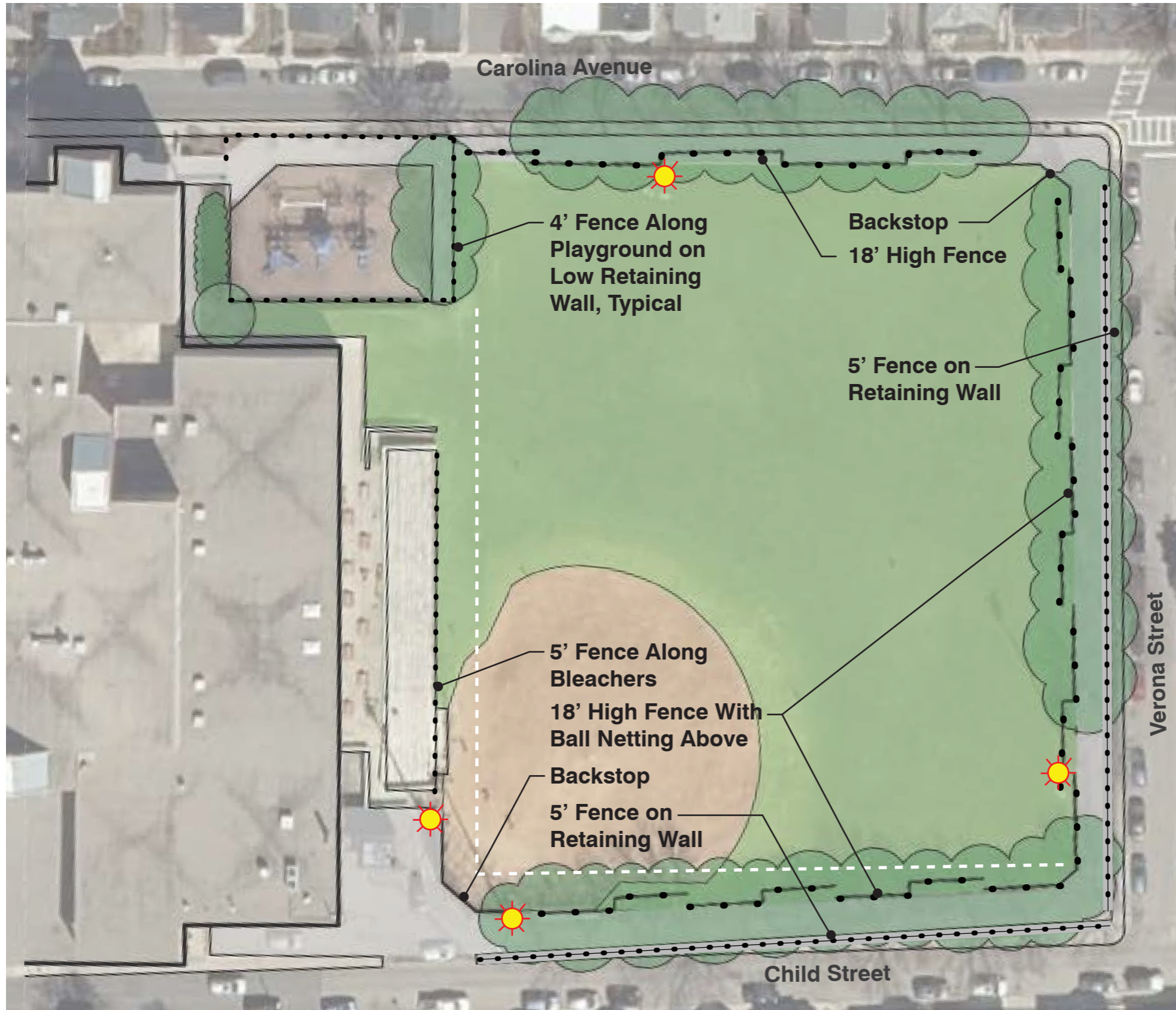
---  
Project Scope

---  
Approximate Edge  
of Sports/Lawn Area

---  
Approximate Edge  
of Playground Area

☀️ Light Pole  
Locations

# SPORTS FIELDS & BLEACHERS



## Park Permit Holders

- EHS Softball & Baseball:  
April-June, 50 days
- Regan Spring Baseball:  
April-July, 70 days
- Regan Summer Baseball:  
July-August, 10 days
- Muddy River Baseball:  
July-August, 21 days
- Boston Korean Baseball League:  
1 day
- AAM Softball:  
October, 3 days
- Softball Practice:  
April, 1 day
- HUB Sports Boston:  
May-August, 21 days
- Soccer Shots:  
April-June, 10 days
- JP Youth Soccer:  
August-November, 64 days
- BUDA Youth Ultimate Frisbee:  
April-June & Sept-Oct, 127 days
- Tournaments:  
2 days



# SPORTS FIELD



View From Bleachers to Field With Players Bench in Foreground



View of Child Street Backstop From Infield



Player's Bench Opposite of Bleachers



View of Bleachers From Home Plate



View of Bleachers From Carolina Ave Backstop



Sports Light Pole

# BLEACHERS & PLAZA



View of Plaza Above Bleachers

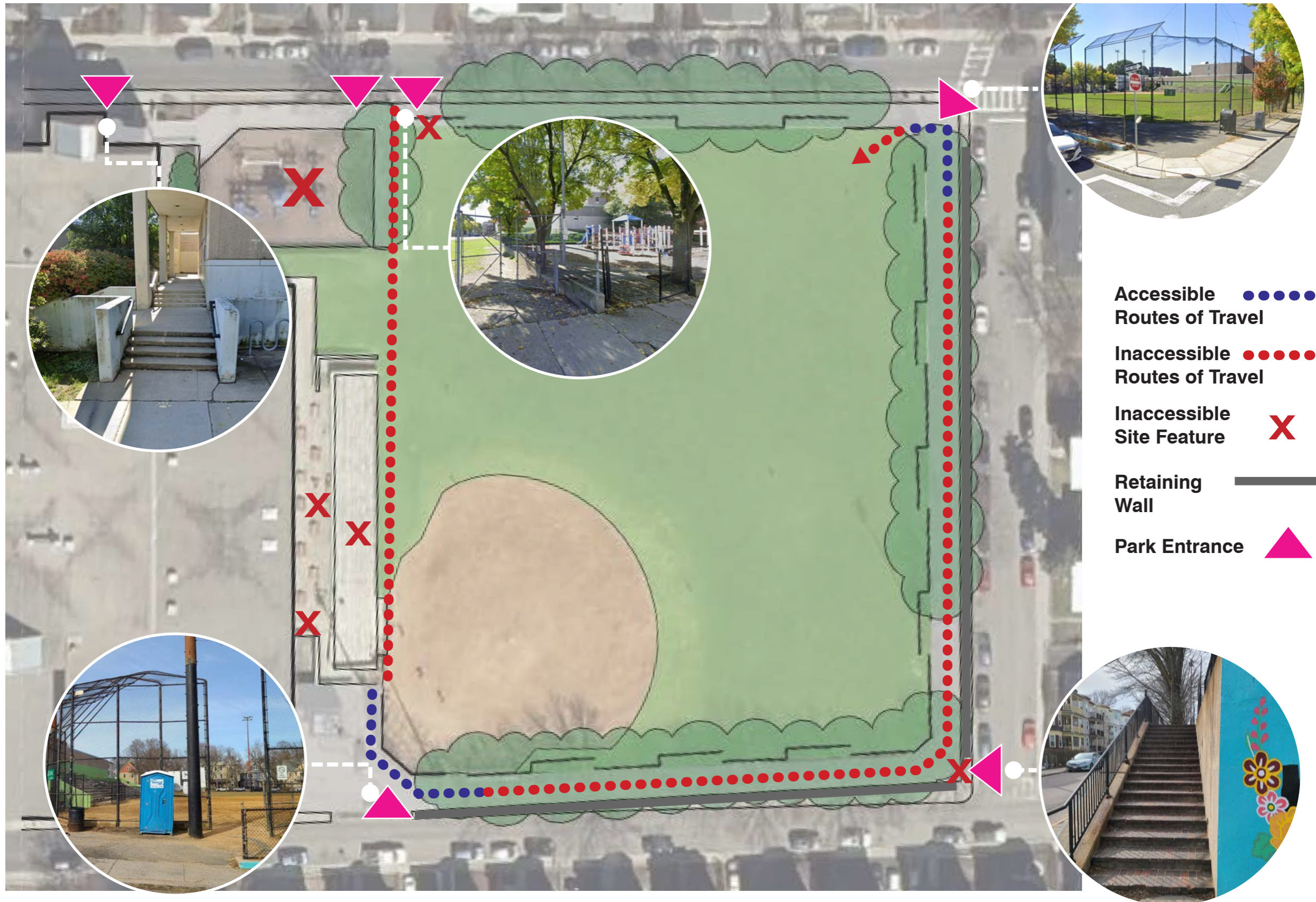


View of Bleachers From Within



View of Bleachers From Field

# SITE ANALYSIS - ENTRIES & CIRCULATION



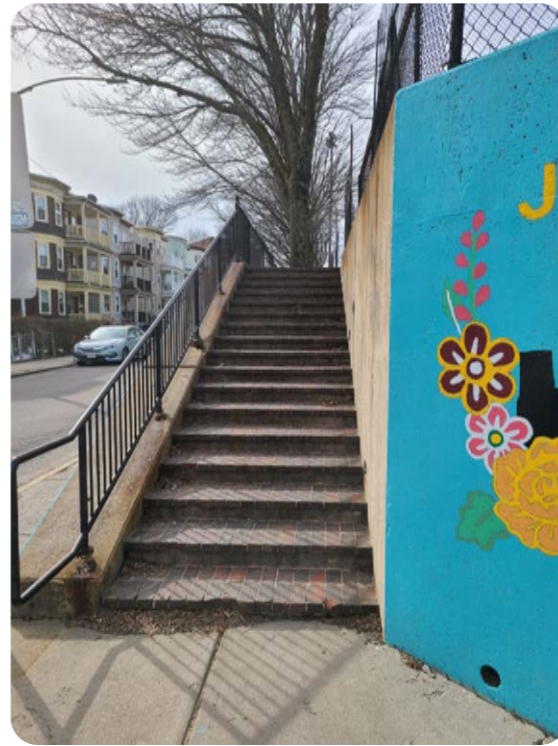
# CIRCULATION & ACCESSIBILITY



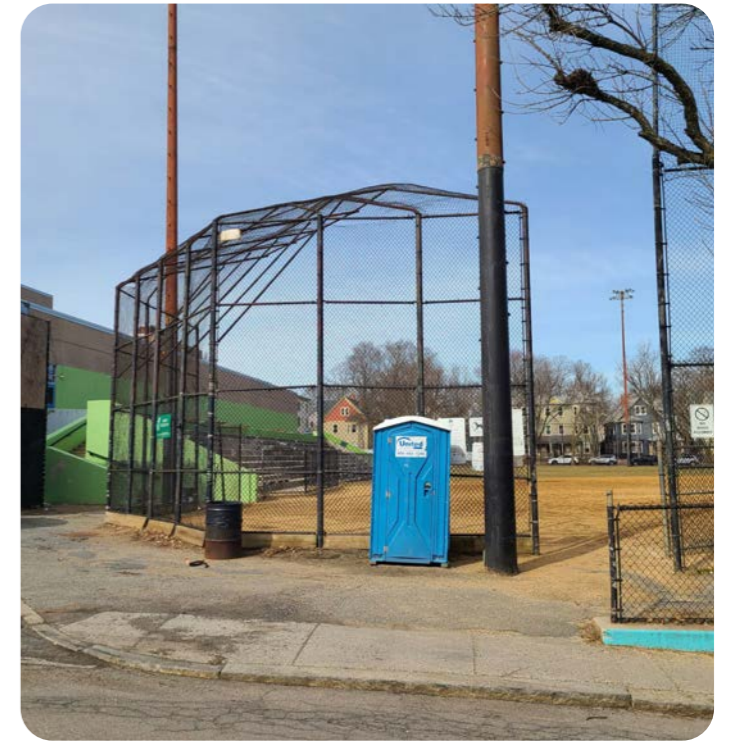
Access to Field From Corner of Verona St. & Carolina Ave.



Access to Field From Carolina Ave.



Access to Perimeter Path From Corner of Verona St. & Child St.



Access to Field, Bleachers & Perimeter Path From Child St.



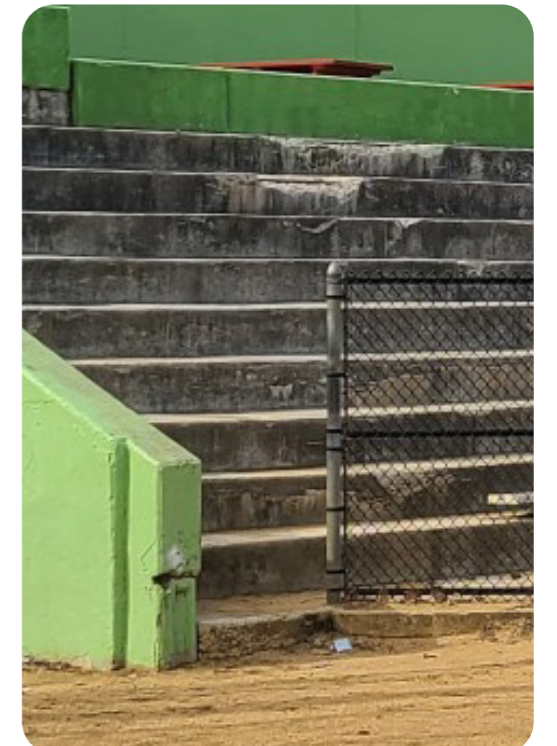
Furniture Blocking Sections of Perimeter Path



Path Heaved by Tree Roots Creating an Uneven Walking Surface



Edges of Tree Wells Have Been Heaved by Tree Roots



Step at Bleacher Entrance Near Child Street

# SITE ANALYSIS - VEGETATION



## Legend

- Trees in Poor Health & Potential Removal **X**
- Invasive Vines 

## Major Tree Species



*Acer rubrum* - Red Maple  
Image Source: Bower & Branch



*Cladrastis lutea* - Yellow-Wood  
Image Source: tree-guide.com



*Fraxinus pennsylvanica* - Green Ash  
Image Source: Missouri Dept. of Conservation

# VEGETATION



Trees Along Child St. Growing Into Fence And Ball Netting



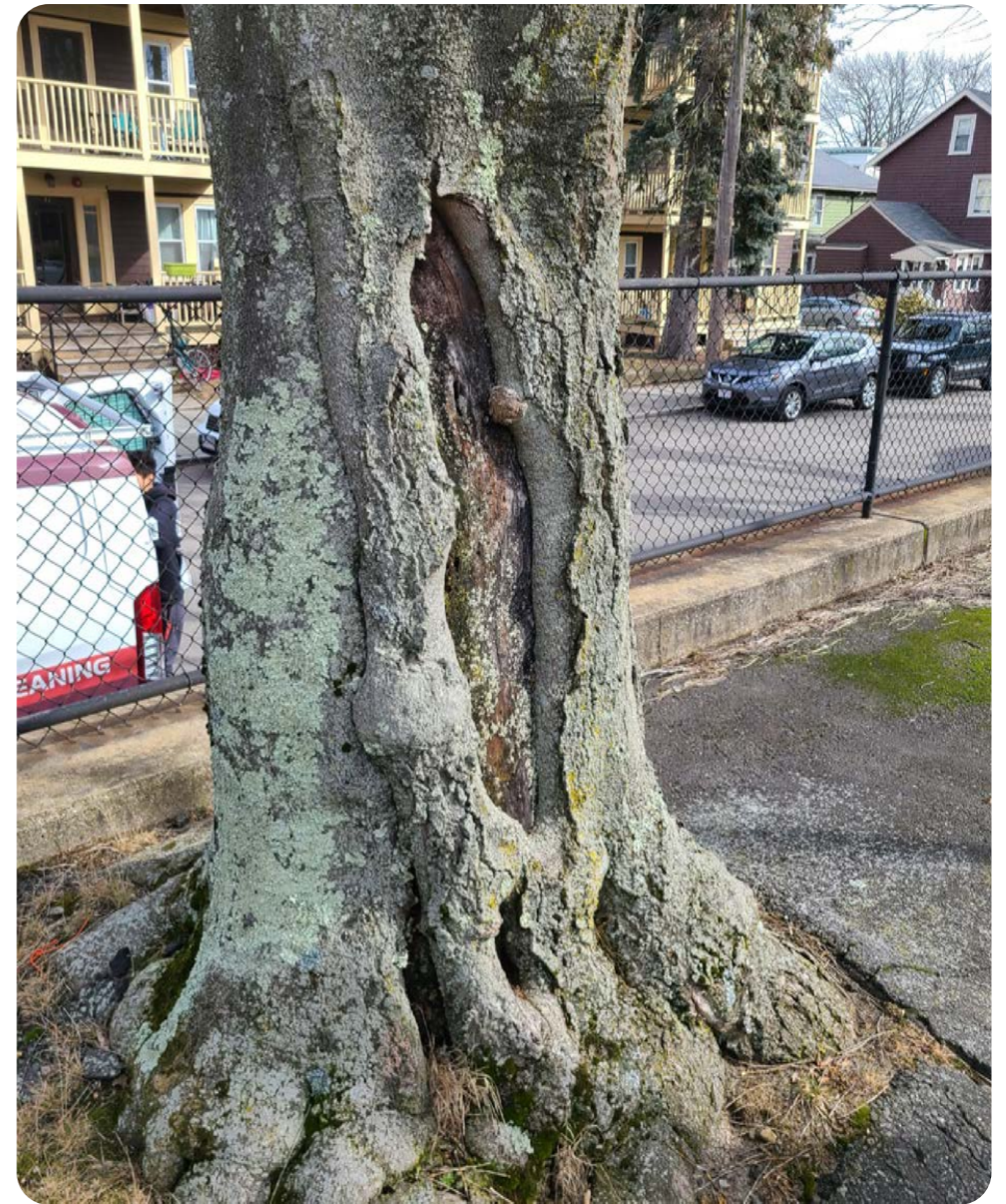
Trees Along Carolina Ave. Growing Into Fence, Ball Netting is Missing



Trees Along Verona St. Growing Into Fence And Ball Netting



Pruning Scar on Tree in Foreground, All Trees to be Inspected by Certified Arborist



Trunk Scar on Tree, All Trees to be Inspected by Certified Arborist

# ADD ALT. - PLAYGROUND & PLAY STRUCTURE



View of Play Structure Looking South West



View of Playground Looking West



View of Playground Seating and Walkway Looking South

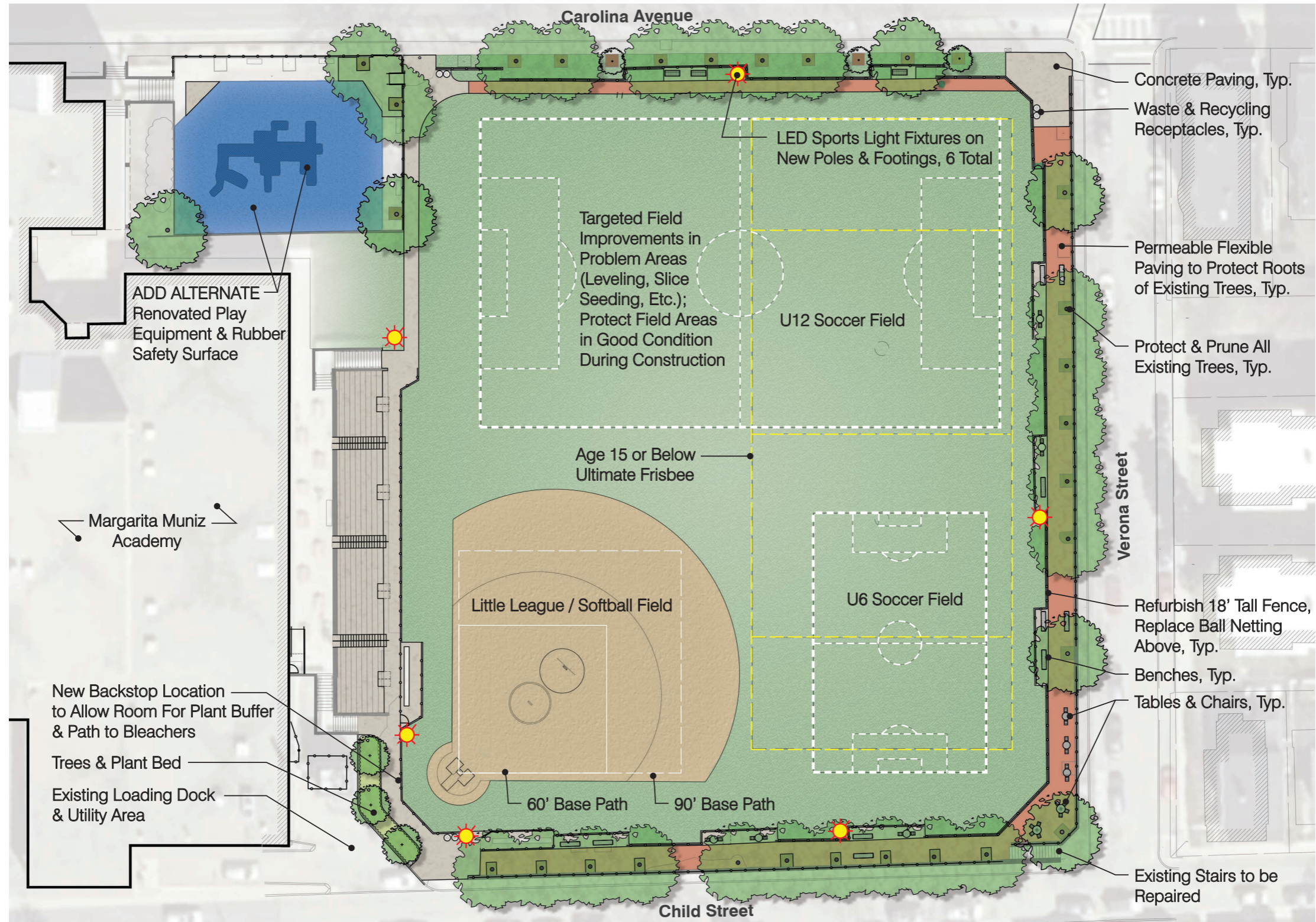


View of Play Structure Seating and Walkway Looking West



View of Playground Entrance From Field Area, Looking East

# SCHEMATIC DESIGN



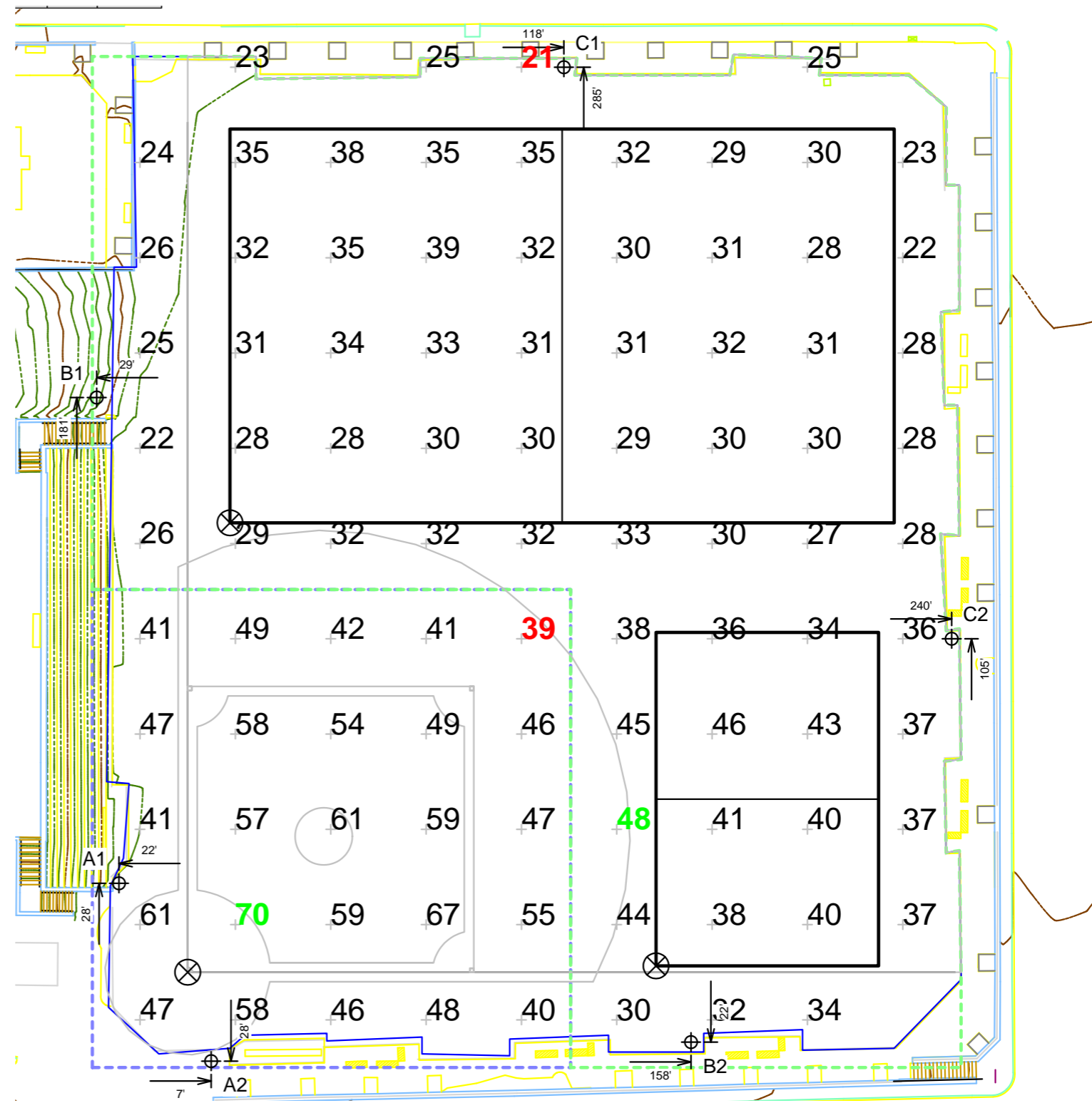


# SPORTS FIELD LIGHTS

| Equipment List For Areas Shown |             |      |                 |                   |                |          |           |             |
|--------------------------------|-------------|------|-----------------|-------------------|----------------|----------|-----------|-------------|
| Pole                           |             |      |                 | Luminaires        |                |          |           |             |
| QTY                            | LOCATION    | SIZE | GRADE ELEVATION | ABOVE GRADE LEVEL | LUMINAIRE TYPE | QTY/POLE | THIS GRID | OTHER GRIDS |
| 2                              | A1-A2       | 70'  | -               | 70.1'             | TLC-LED-1200   | 2        | 2         | 0           |
|                                |             |      |                 | 70.1'             | TLC-LED-900    | 2        | 2         | 0           |
|                                |             |      |                 | 15.5'             | TLC-BT-575     | 1        | 1         | 0           |
| 1                              | B1          | 70'  | 6'              | 76.1'             | TLC-LED-1200   | 3        | 3         | 0           |
|                                |             |      |                 | 76.1'             | TLC-LED-900    | 2        | 2         | 0           |
|                                |             |      |                 | 21.5'             | TLC-BT-575     | 2        | 2         | 0           |
| 3                              | B2<br>C1-C2 | 70'  | -               | 70.1'             | TLC-LED-1200   | 3        | 3         | 0           |
|                                |             |      |                 | 70.1'             | TLC-LED-900    | 2        | 2         | 0           |
|                                |             |      |                 | 15.5'             | TLC-BT-575     | 2        | 2         | 0           |
| 6                              | Totals      |      |                 |                   |                | 38       | 38        | 0           |

| Grid Summary |                          |
|--------------|--------------------------|
| Name         | Baseball                 |
| Size         | Irregular 288'/343'/243' |
| Spacing      | 30.0' x 30.0'            |
| Height       | 3.0' above grade         |

| Illumination Summary  |                                   |          |
|-----------------------|-----------------------------------|----------|
|                       | MAINTAINED HORIZONTAL FOOTCANDLES |          |
|                       | Infield                           | Outfield |
| Guaranteed Average    | 50                                | 30       |
| Scan Average          | 51.15                             | 32.15    |
| Maximum               | 70                                | 48       |
| Minimum               | 39                                | 21       |
| Avg/Min               | 1.32                              | 1.50     |
| Guaranteed Max/Min    | 2                                 | 2.5      |
| Max/Min               | 1.80                              | 2.24     |
| UG (adjacent pts)     | 1.49                              | 1.63     |
| CU                    | 0.76                              |          |
| No. of Points         | 25                                | 68       |
| LUMINAIRE INFORMATION |                                   |          |
| Applied Circuits      | A                                 |          |
| No. of Luminaires     | 38                                |          |
| Total Load            | 35.03 kW                          |          |



Field Light Levels

# SPORTS FIELD LIGHTS

## What Matters in Lighting Technology

## Light Control

| 1977<br>SportsCluster | 1989<br>SportsCluster-2 | 1989<br>SportsCluster-2<br>Level 8" | 1989<br>SportsCluster-2<br>Total Light Control™ | 2005<br>Light-Structure<br>System™<br>Green Generation™ | Today<br>Light-Structure<br>System™<br>TLC for LED™ |
|-----------------------|-------------------------|-------------------------------------|---|---|---|
|                       |                         |                                     |   |   |   |

Photographed at 100 ft (30 m) from field edge

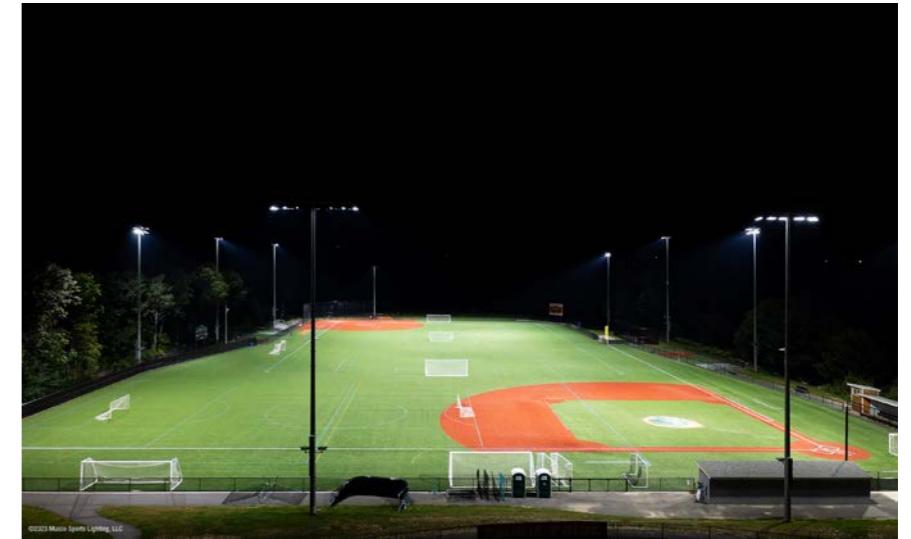
Used equal parameters for:

- On-field light level per pole
- Wattage per luminaire
- Mounting height
- Luminaire aiming angles
- Pole distance from aiming point

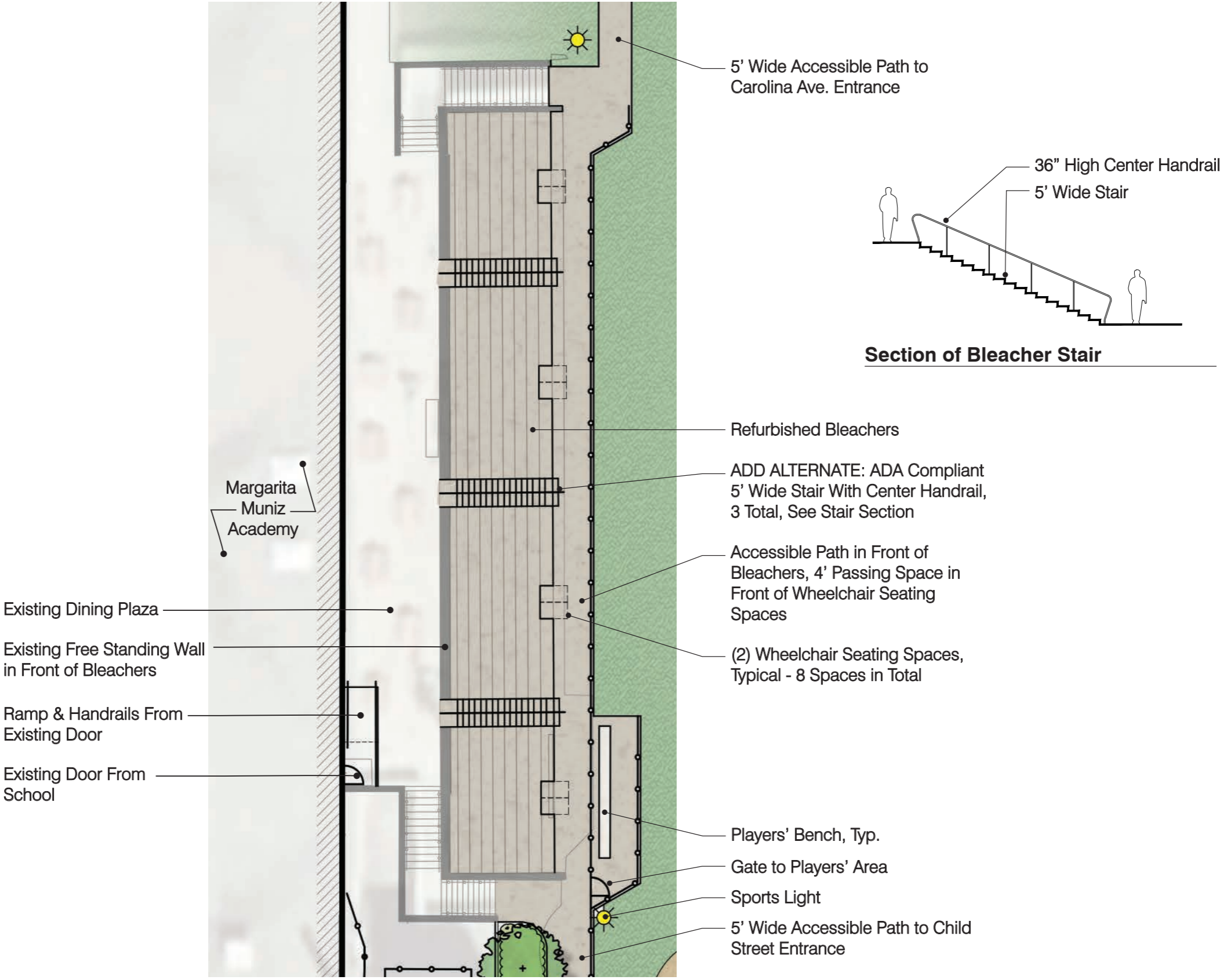
©2015, 2017 Musco Sports Lighting, LLC - M-1905-en04-4



Solutions for Lighting



# BLEACHER ENLARGEMENT



Margarita  
Muniz  
Academy

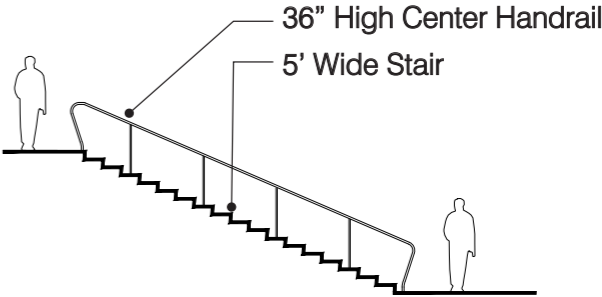
Existing Dining Plaza

Existing Free Standing Wall  
in Front of Bleachers

Ramp & Handrails From  
Existing Door

Existing Door From  
School

5' Wide Accessible Path to  
Carolina Ave. Entrance



**Section of Bleacher Stair**

Refurbished Bleachers

ADD ALTERNATE: ADA Compliant  
5' Wide Stair With Center Handrail,  
3 Total, See Stair Section

Accessible Path in Front of  
Bleachers, 4' Passing Space in  
Front of Wheelchair Seating  
Spaces

(2) Wheelchair Seating Spaces,  
Typical - 8 Spaces in Total

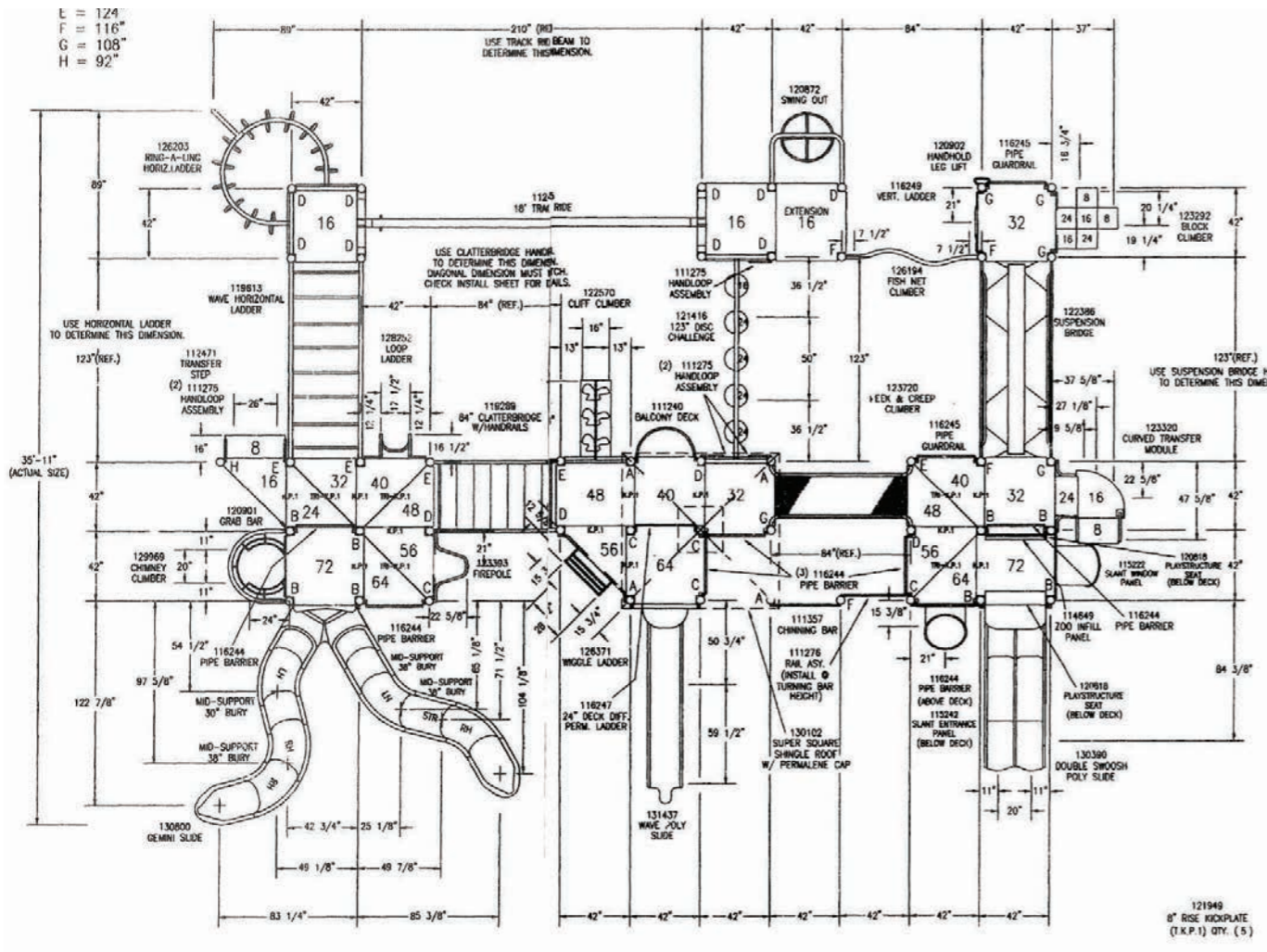
Players' Bench, Typ.

Gate to Players' Area

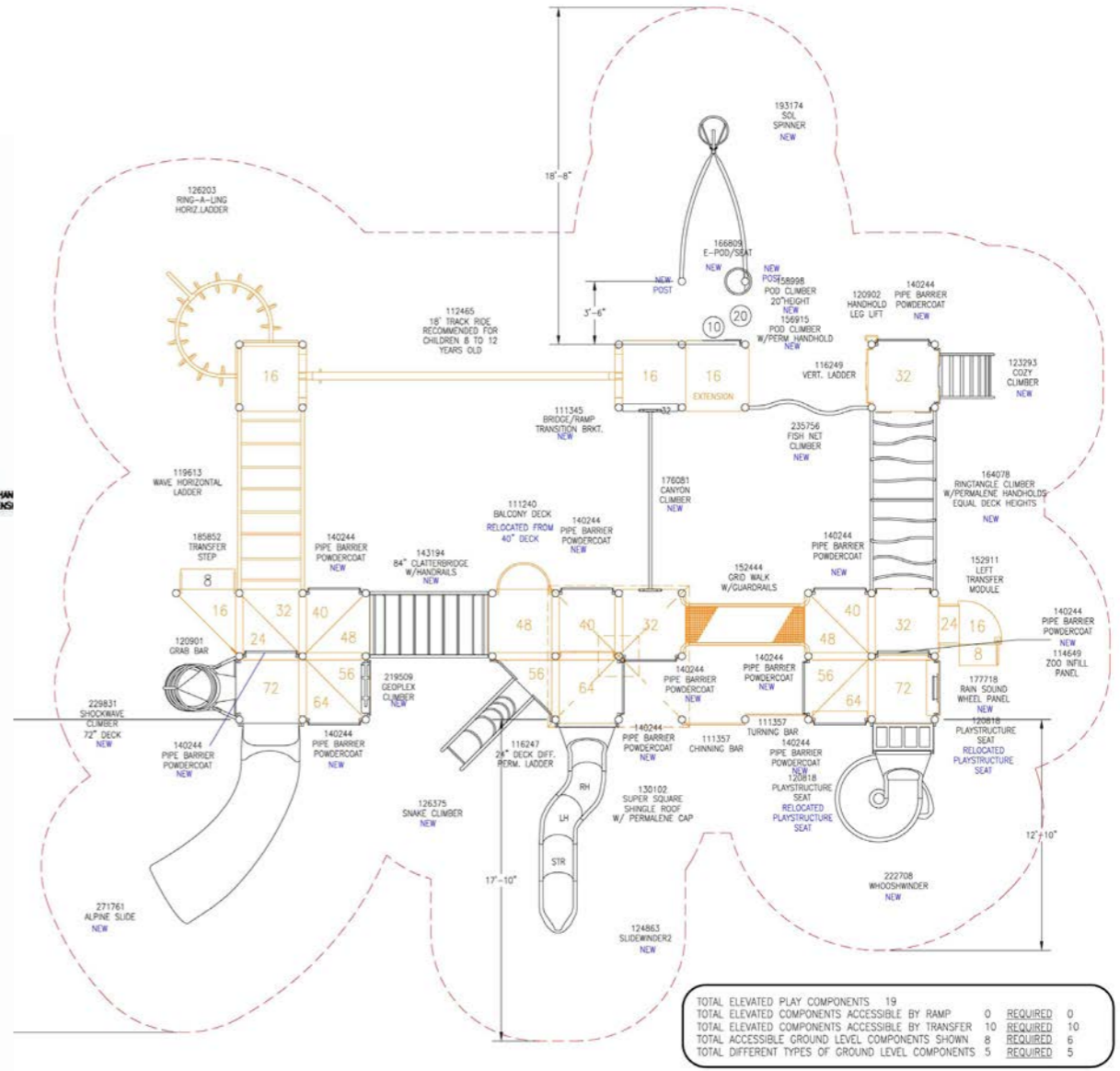
Sports Light

5' Wide Accessible Path to Child  
Street Entrance

# ADD ALT. - PLAY STRUCTURE IMPROVEMENTS



Layout & Components of Existing Play Structure



Renovated Structure - Existing Components in Orange, New Components in Black

# ADD ALT. - PLAY STRUCTURE IMPROVEMENTS



Renovated Structure - View Looking West



Renovated Structure - View Looking South

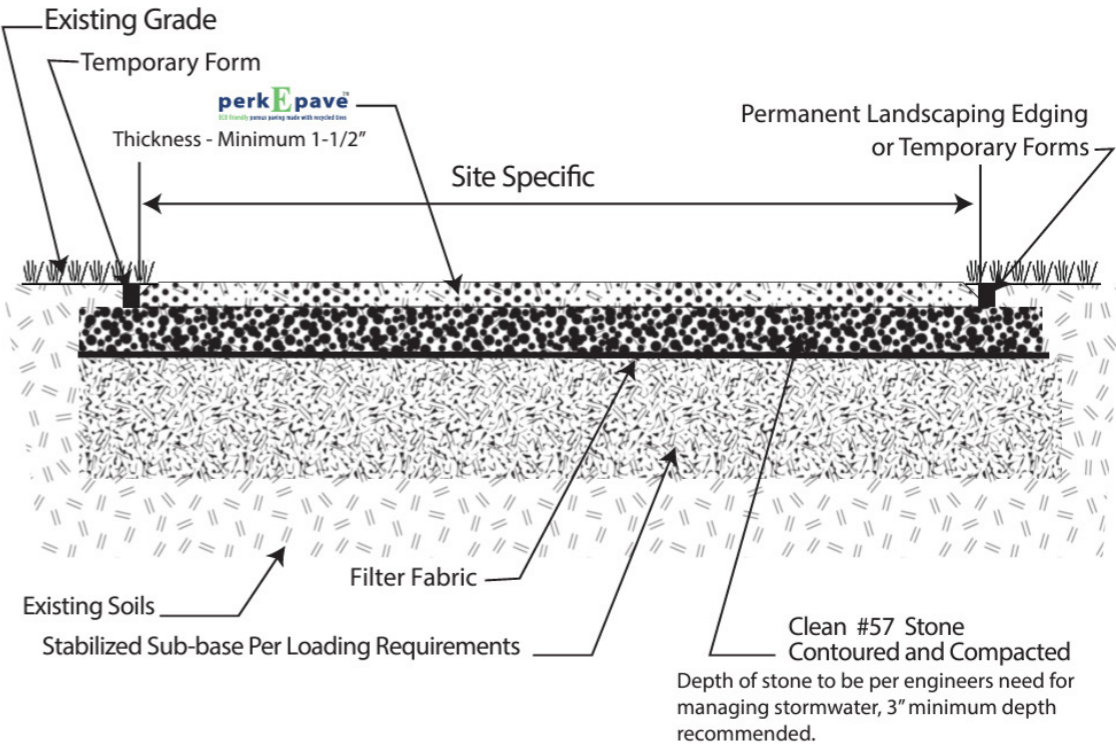


Existing Structure - View Looking West



Existing Structure - View Looking South

# MATERIALS



# SITE FURNITURE



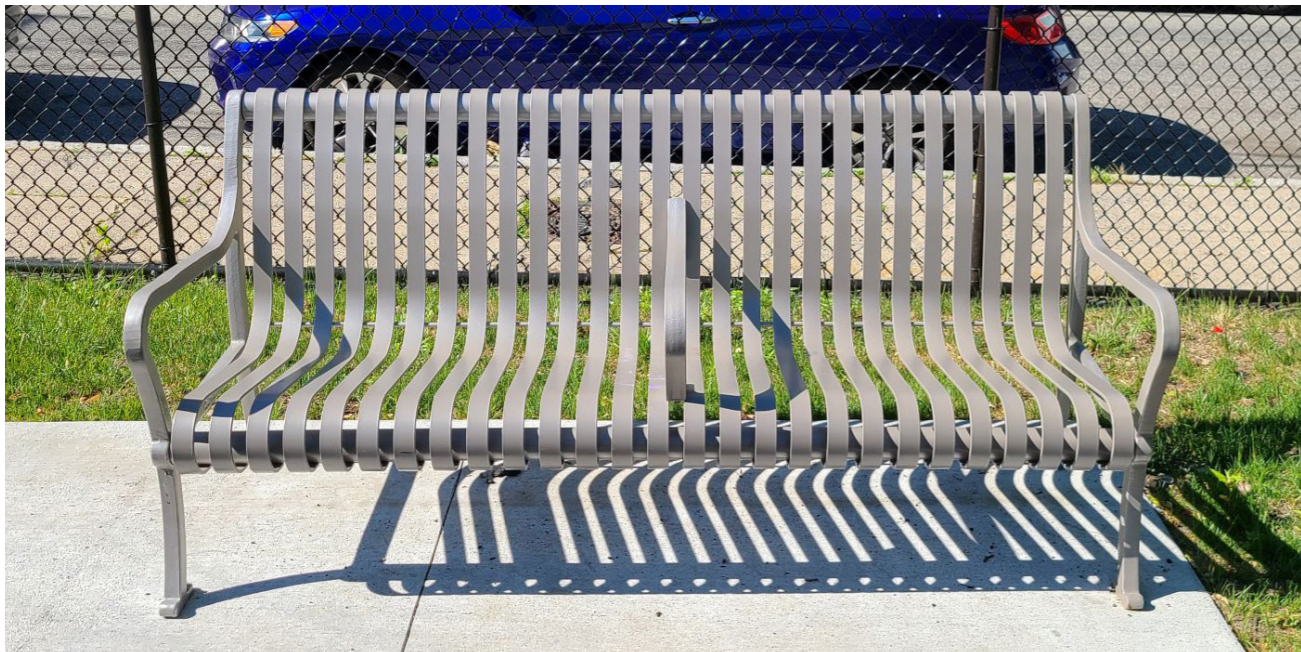
Large Table



Small Table



Waste Receptacles



Bench With Back



Backless Bench

# FIELD IMPROVEMENTS & PLANTING



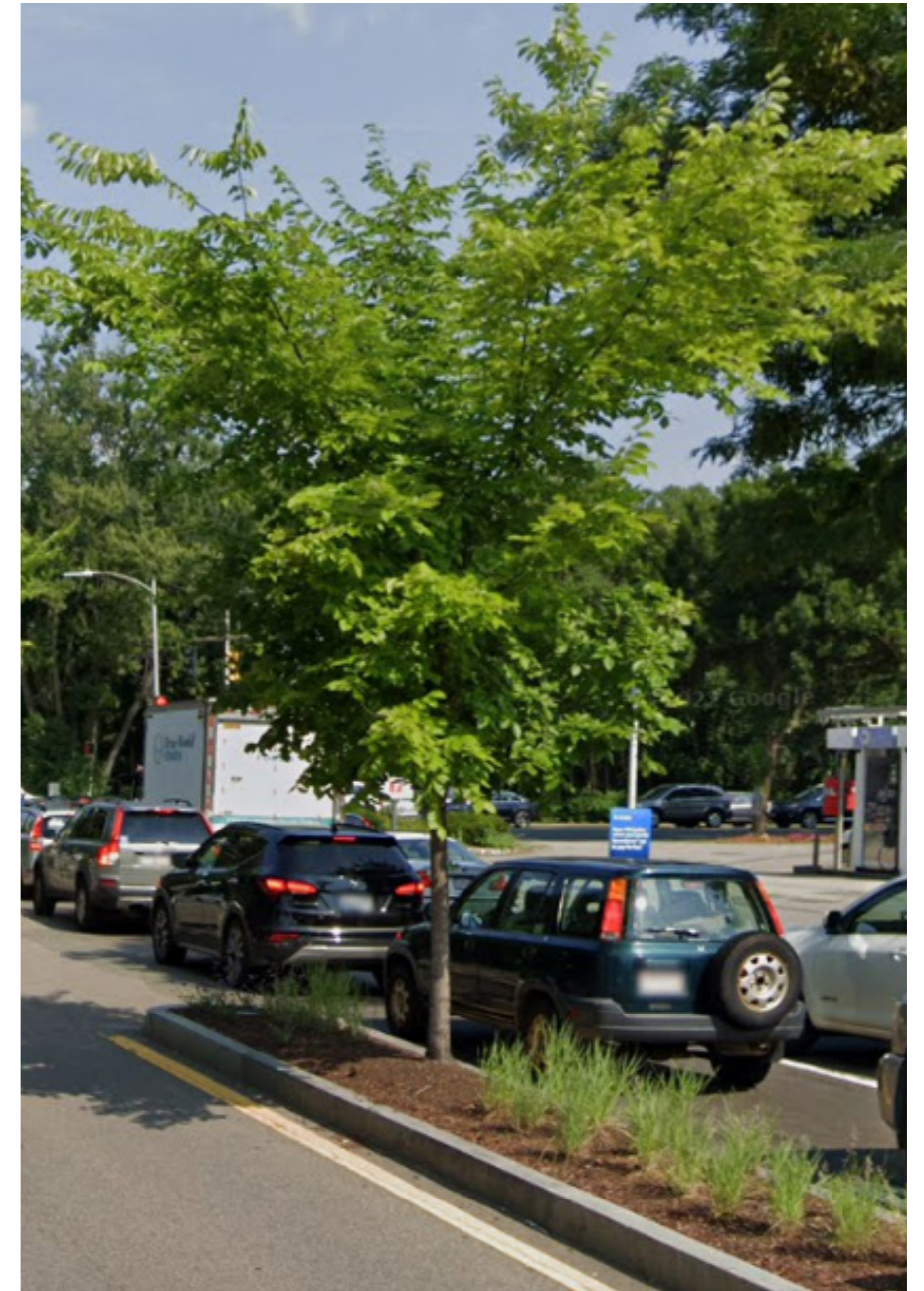
Portable Pitching Mound



Backstop



Players Bench



American Elm





# LISTENING & DISCUSSION

Help us build great parks.  
Let us know what matters to you.

# THANK YOU!

For questions, maintenance requests or concerns regarding any of our parks contact 311

